

D-Link Quick Installation Guide

This product can be used with:
Windows XP, Me, 2000, 98se & 98
Macintosh OS X v10.1.4



DBT-120
D-Link PersonalAir™
Bluetooth USB Adapter

Before You Begin

You must have at least the following:

- Windows XP/Me/2000/98se/98 or Macintosh OS X v10.1.4
- One Available USB Port
- CD-ROM Drive

Check Your Package Contents

These are the items included with your purchase:

If any of the below items are missing, please contact your reseller.



- DBT-120 Wireless USB Bluetooth Adapter



- CD-ROM (containing Drivers, PDF Installation Guide, PDF Manual and Warranty)



- USB Extension Cable

Contents:

- Microsoft Windows Instructions.....Next Page
- Macintosh OS X Instructions.....Last Page

1

Insert the D-Link CD-ROM Into Your Computer

Turn on the computer and **Insert** the **D-link PersonalAir DBT-120 Driver CD** in the CD-ROM drive.



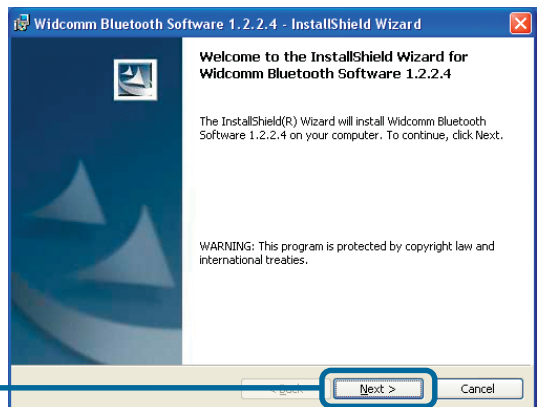
Do **NOT** install the DBT-120 USB Adapter into your PC before installing the driver software on the D-Link CD!

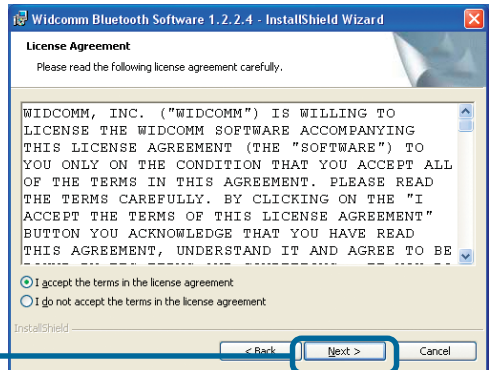
Click **Install Bluetooth Software**



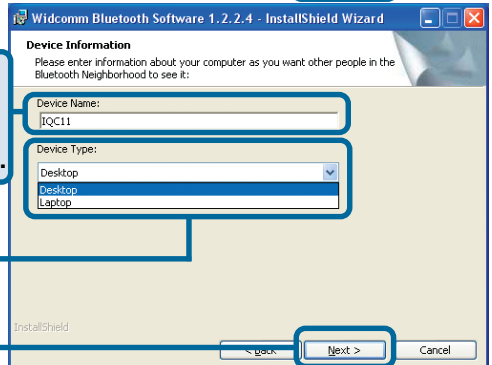
If the Autorun screen does not automatically start, click on **Start > Run**, enter "**D:\Autorun.exe**" and click **OK**. "**D**" represents the letter of your CD-ROM drive. Replace it if your CD-ROM drive is a different letter.

Click **Next**





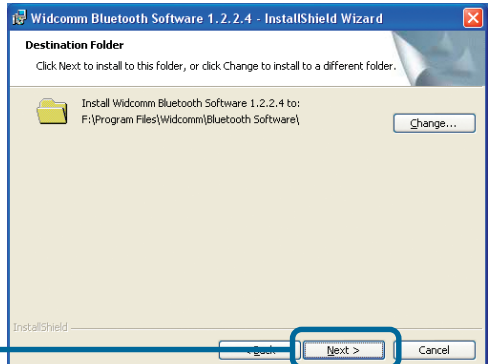
Click **Next**



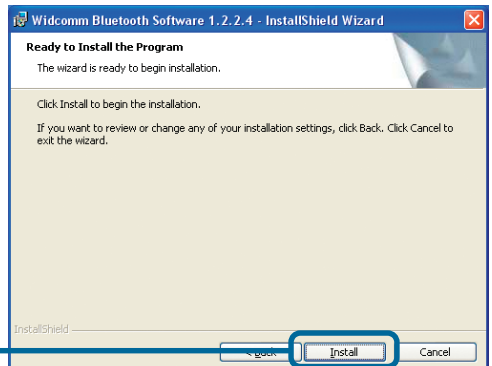
Type a name for this device. Multiple installs must use different names.

Select **Desktop** or **Laptop**

Click **Next**



Click **Next**

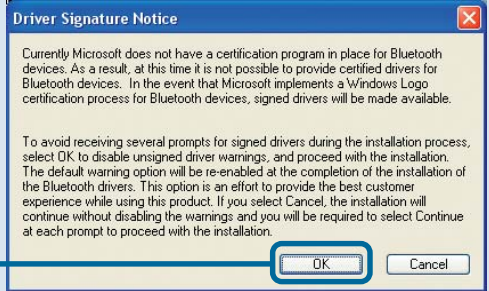


Click **Install**

Windows XP & Windows 2000 Users

Only **Windows XP** and **Windows 2000** users will see this screen.
Click **OK** to continue.

Click **OK**

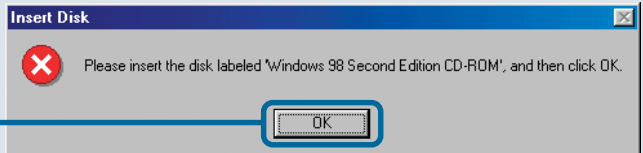


Windows 98se/98 Users

Only **Windows 98se/98** users will see these screens.

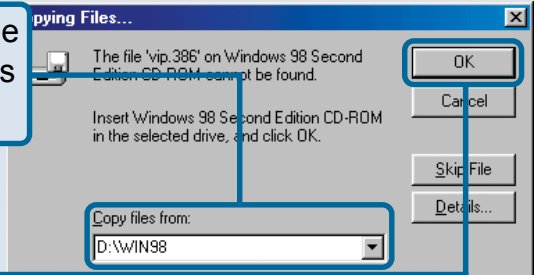
Insert your Windows 98 Installation disk into your CD-ROM drive

Click **OK**

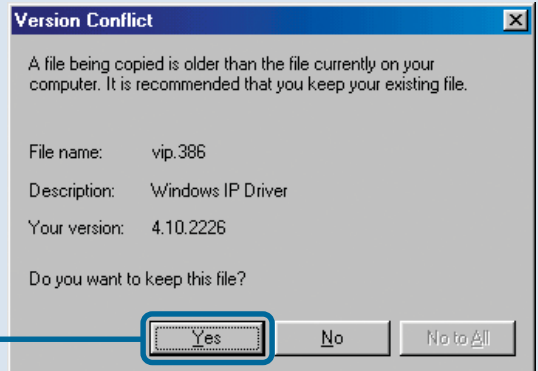


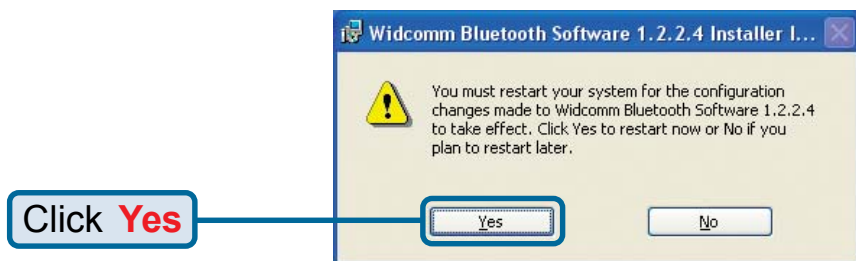
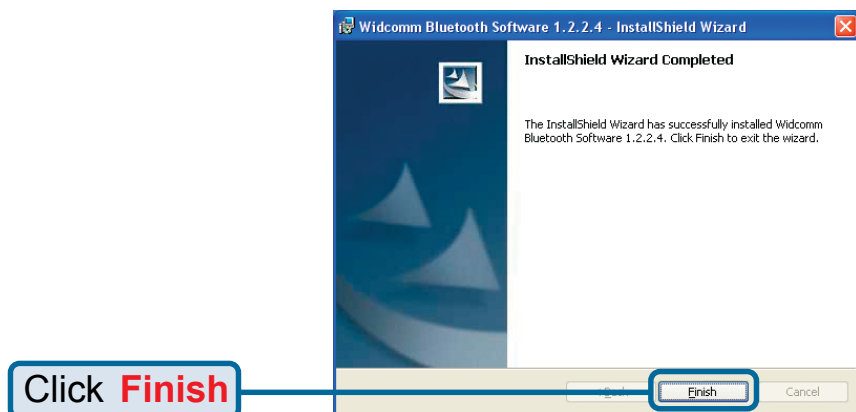
Enter the location of the Windows 98 setup files (e.g. "D:/Win98")

Click **OK**



Click **Yes**





Wait for your computer to **Restart**

2 Installing The DBT-120 Wireless USB Bluetooth Adapter Into Your Computer

With your computer on...

Connect the DBT-120 to an available USB port on your USB host adapter or USB hub.

(You may also use the USB extension cable for easy access.)



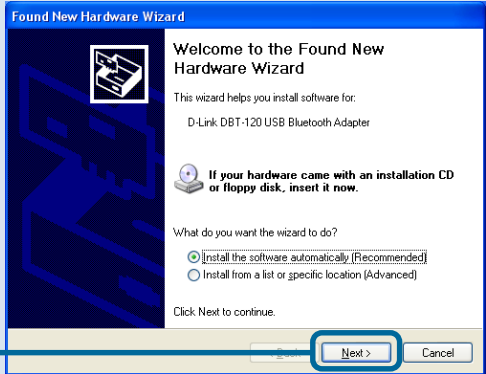
3

Completing The Driver Installation

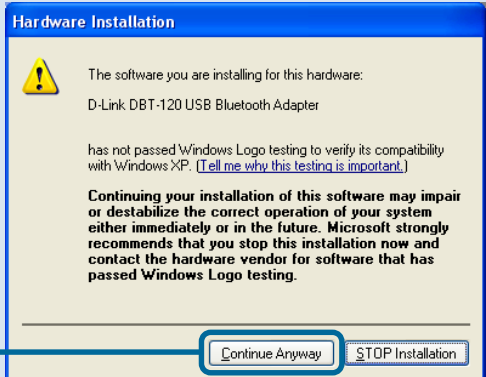
Windows XP Users

Follow these steps to complete installation under Windows XP for each device that Windows prompts you to install. **You will see each of these screens twice.**

Click **Next**



Click **Continue Anyway**



Click **Finish**

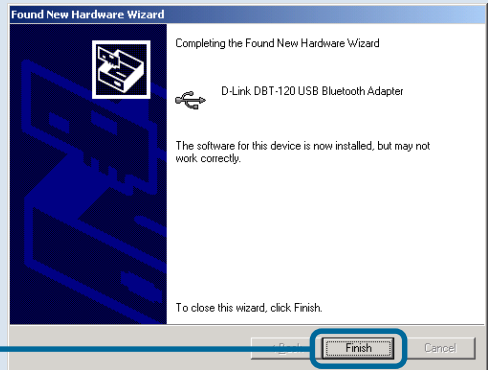


Windows 2000 Users

Under Windows 2000, you may see the screen below. Click “Finish” to complete the installation. If you do not see this screen, then the installation has completed automatically.

You may now continue to the next section.

Click **Finish**

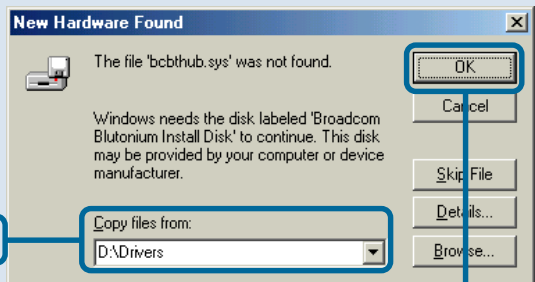


Windows Me & 98SE/98 Users

Under Windows Me & 98SE/98, you may see the screen below. Select “Browse” and locate the “Drivers” folder on the DBT-120 Driver CD and select “OK”. If you do not see this screen, then the installation has completed automatically. You may now continue to the next section.

Locate **Driver Folder**

Select **OK**



4

The Installation is Complete!

After you've completed the installation, the Bluetooth **Configuration Utility** will automatically start and the utility icon will appear in the bottom right hand corner of the desktop screen (systray).

Double-click the **Bluetooth** icon to use the configuration utility.



Once properly installed, the **DBT-120 Wireless Bluetooth USB Adapter** will be able to connect to other Bluetooth wireless adapters,

When you have completed the steps in this *Quick Installation Guide*, your connected network should look similar to this:

For detailed explanations regarding the Bluetooth software for Windows, please refer to the DBT-120 Manual on the CD included with this product.



Technical Support

You can find the most recent software and user documentation on the **D-Link** website.

D-Link provides free technical support for customers within the United States for the duration of the warranty period on this product.

U.S. customers can contact **D-Link** technical support through our web site or by phone.

D-Link Technical Support over the Telephone:

(877) 45D-LINK

(877) 453-5465

24 hours a day, seven days a week

D-Link Technical Support over the Internet:

<http://support.dlink.com>

email: support@dlink.com



5

Macintosh OS X v 10.1.4 Installation

1. Download and install the Bluetooth™ software from www.apple.com
2. Insert the D-Link DBT-120 Bluetooth™ USB Adapter into an available USB port

Keyboard



Notebook

