

DCS-1000



- Web Based Remote Access Using Any Java Enabled Web Browser
- Integrated Web Server
- 10/100Mbps Fast Ethernet Connection
- Bundled Software for Multi-Camera Monitoring and Management
- Archive Streaming Video to your Hard Drive

# D-Link®

## *Express* EtherNetwork™

# Internet Camera



The D-Link DCS-1000 is a versatile 10/100Mbps Fast Ethernet Internet camera with VGA quality resolution.

An ideal solution for remote security monitoring or broadcasting of live events over the Internet, the D-Link DCS-1000 combines the functionality of a video surveillance camera with the reliability and scalability of Fast Ethernet.

The DCS-1000's built-in web server provides easy to use remote access from anywhere in

the world via the Internet using a standard Java-enabled web browser, such as Microsoft Internet Explorer or Netscape Navigator.

The bundled Windows based software further enhances the DCS-1000's security features, allowing you to archive streaming video straight to your hard drive, monitor as many as 16 cameras on a single screen, and set up motion detection to trigger automatic recording.

# DCS-1000 Express EtherNetwork Internet Camera

## SPECIFICATIONS

### General

- Built-in Web Server
- 10/100Mbps Fast Ethernet Network Access

### Web Access Requirements

Any Java-Enabled or ActiveX compatible Web Browser, i.e. current versions of Microsoft Internet Explorer or Netscape Navigator.

### IPView Management Software Requirements

Microsoft Windows XP, 2000, Me, 98SE or 98

### Video

- 1/3" CMOS Digital VGA Sensor
- 24-bit RGB color
- Resolution: 640x480, 320x240 or 160x120
- 5 Level User Selectable JPEG Compression Rate
- Frame Rate: 1, 5, 7, 15, 20 or Auto (actual performance depends on resolution, compression rate and network performance)
- File size and network bandwidth depend on actual image content, lightness/darkness of content, frame rate, compression level, resolution. Higher compression and low frame rate result in lower bandwidth requirements, while low compression and high frame rates result in higher network bandwidth and higher image quality.

### Exposure

- Gain Control: Automatic or Manual
- White Balance: Automatic or Manual
- Brightness Control: Slide bar or display 1-128
- Exposure: Automatic or Manual
- Contrast Control: Slide bar
- Hue Control: Slide bar
- Shutter: 1/60 ~ 1/15000 sec
- Minimum Illumination: 2.5lux@f1.4, 3000K color
- Warning: Never aim the camera directly at the sun or at extreme light sources. Doing so may cause unrecoverable damage to the CMOS sensor.

### Warranty

Limited 1-Year Warranty

### Lens

- Replaceable standard C/CS mount
- Focus: 20cm ~ infinity
- Manual Focus
- Aperture: F 1.8
- Focal Length: 6.0 mm

### System Settings

#### Main

- Camera Name & Location
- IP Address: Static or Dynamic
- Default Gateway Address
- DNS Address
- Manager ID (username)
- Manager Password
- Recover Default Values
- Open Second Port

#### Date/Time

- Synchronize with time server
- Set Manually

#### Trigger

- On/Off
- Send e-mail with image attachment
- SMTP server address
- Sender e-mail address
- Receiver e-mail address
- Sending Interval (time between each send)
- Sending Time (number of times an e-mail will be sent)

### Protocol Support

HTTP, TCP/IP, UDP, RARP, PING, ARP, DHCP, BOOTP, PPPoE

### Network Interface

802.3/802.3u NWay Autosensing 10/100Mbps (RJ-45 Jack)

### Firmware Updates

Via Web Interface or IPView Management Software

### IPView Management Software

- Remotely manage and control an unlimited number of DCS-1000 Internet Cameras
- Microsoft Windows XP, 2000, Me, 98SE and 98 compatible

- View 16, 9, 4 or 1 Camera on one screen
- Supports all management functions provided in web interface
- Record streaming video to hard drive in AVI format
- Motion detection to trigger automatic recording

### Hardware

- Power Supply: DC 5V/2.4A
- Power Requirements: 4.5Watt (900mA x 5V)
- Indoor Use Only. Outdoor Use Requires Protective Housing.
- Operating Temperature: 5° ~ 50°C
- Storage Temperature: -25° ~ 50°C
- Humidity: 5% ~ 95% non-condensing
- Size: 6.5" (L) x 3.5" (W) x 2.25" (H)

### I/O Connector

- Used to connect external triggers (i.e. motion detection)
- Four I/O Ports, 2 x Input, 2 x Output
- I/O Status: Normally On
- 8-Pins Total
- Maximum Current: 100mA
- Output Voltage: DC 5V

### LED Indicator

- Power & Link
- Selectable LED Control: Normal, Off, Dummy

### EMI & Safety

- FCC Class A, CE, VCCI
- For Industrial Use Only

### Accessories Included

- CAT5 Fast Ethernet Cable
- AC Power Adapter
- Stand with multi-angle connectors
- CD with Remote Management and ActiveX Software



D-Link Systems, Inc. 53 Discovery Drive Irvine CA 92618 www.dlink.com

©Copyright D-Link Systems, Inc. 2002. All rights reserved. D-Link® is a registered trademark of D-Link Systems, Inc. Other trademarks or registered trademarks are the property of their respective manufacturers or owners. Price and specifications are subject to changes without notice. See inside package for warranty details.

\* 24/7 Tech Support is available only in USA.

**D-Link®**  
Building Networks for People

# DCS-1000 Express EtherNetwork Internet Camera

## POSSIBLE APPLICATIONS

**Office Security:** Add surveillance capabilities to your office or business and allows 24/7 access to all cameras.

**Day-care Center:** Allows parents to view day-care activities and check-in on their child/children.

**Stores:** Managers or owners can view store traffic during store hours and/or secure the store during off hours.

**Event Promotion:** Promote events or attractions with a live video feed of activities, letting customers or fans see what's going on.

**Tourist Attractions:** Allow potential tourists and/or customers to view key tourist attractions or locations.

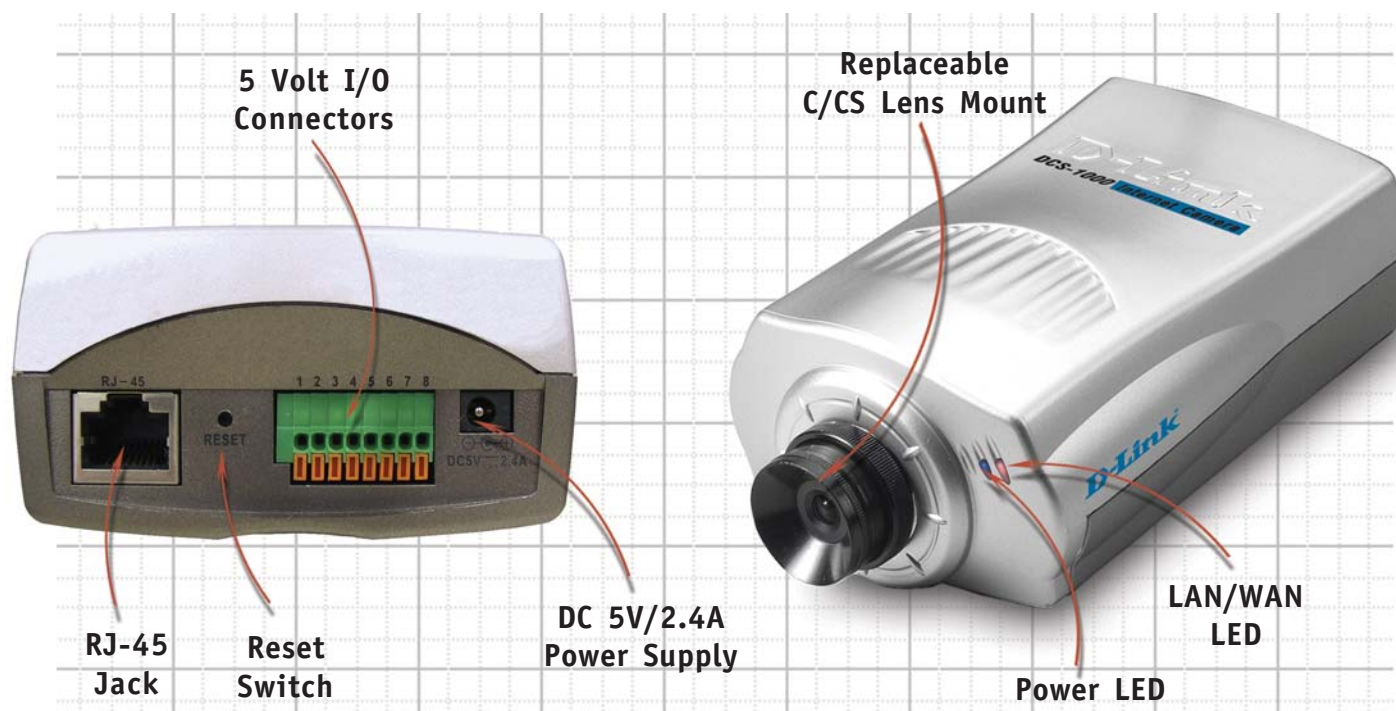
**Hospital/Medical:** 24/7 remote monitoring of patients in hospital or home care environments.

**Construction Site:** Customers have 24/7 access to their construction site to monitor progress.

**Personal or Corporate Web Site:** Spruce up any web page with live streaming video. View the D-Link live streaming demo at <http://www.dlink.com/LiveDemo/>

## FEATURES

- Web-Based Remote Access
- Integrated Web Server
- View Live Streaming Video From Anywhere In The World
- 10/100Mbps Fast Ethernet Interface
- Event Triggered E-Mail Notification
- VGA Quality Resolution
- 5-Level JPEG Compression
- Complete Accessories Kit Included
- IPView Software Enhances Multi-Camera Monitoring and Management
- Record Streaming Video To Hard Drive
- Motion Detection To Trigger Recording
- Username/Password Management
- Secure Password Enabled Interface
- Dummy LED Option
- Works Great In Low Light Conditions
- Replaceable C/CS Lens



D-Link Systems, Inc. 53 Discovery Drive Irvine CA 92618 [www.dlink.com](http://www.dlink.com)

©Copyright D-Link Systems, Inc. 2002. All rights reserved. D-Link® is a registered trademark of D-Link Systems, Inc. Other trademarks or registered trademarks are the property of their respective manufacturers or owners. Price and specifications are subject to changes without notice. See inside package for warranty details.

\* 24/7 Tech Support is available only in USA.

**D-Link®**  
Building Networks for People

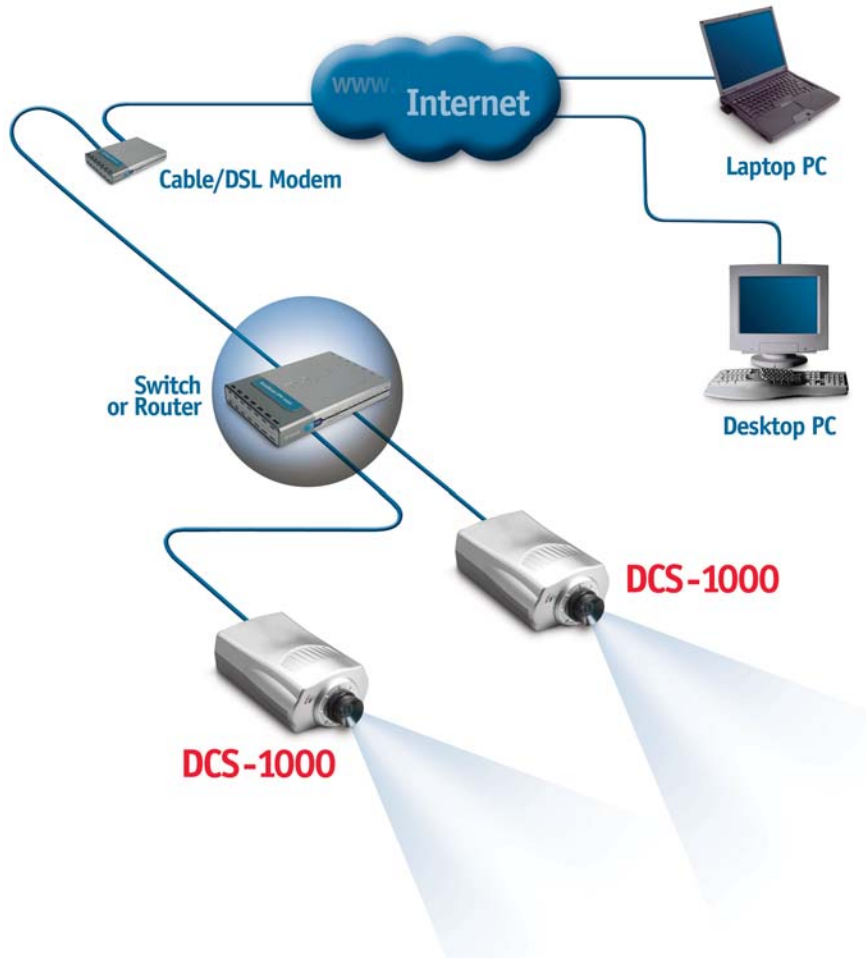


# D-Link®

## Express EtherNetwork™

### Internet Camera

## Typical DCS-1000 Installation



### Product Information

Part No: DCS-1000  
 Description: Express EtherNetwork Internet Camera  
 UPC: 790069-241420  
 D-Link Systems, Inc.  
 TEL: (877) 45D-LINK  
 www.dlink.com

### Package Contents

- DCS-1000
  - Software & Documentation on CD-ROM\*
  - Stand & Mounting Brackets
  - AC Power Adapter
  - Installation Guide
  - Manual
  - CAT5 Cable
- 1: Latest Software and Documentation are Available at <http://support.dlink.com>



D-Link Systems, Inc. 53 Discovery Drive Irvine CA 92618 www.dlink.com

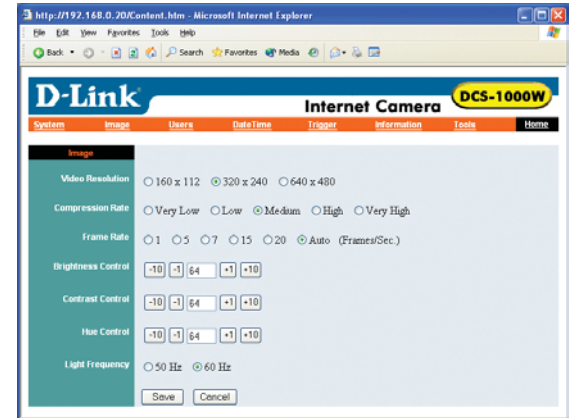
©Copyright D-Link Systems, Inc. 2002. All rights reserved. D-Link® is a registered trademark of D-Link Systems, Inc. Other trademarks or registered trademarks are the property of their respective manufacturers or owners. Price and specifications are subject to changes without notice. See inside package for warranty details.

\* 24/7 Tech Support is available only in USA.

### Typical File Sizes

Resolution	Compression Level*		
WxH	Low	Medium	High
120x160	81 kb	76 kb	54 kb
320x240	72 kb	64 kb	44 kb
640x480	66 kb	54 kb	38 kb

\* Numbers shown represent typical file sizes only. Actual file sizes may vary.



*Access the Web Interface using any Java-Enabled Web Browser*



*View up to 16 Cameras Using the Included IPView Management Software*

# D-Link®

Building Networks for People