

D-Link Quick Installation Guide

This product can be set up using Internet Explorer 6.x or above



DCS-2100G
SECURICAM Network
802.11g Wireless
Internet Camera

Before You Begin

You must have at least the following:

- Windows 98/Me/2000/XP
- A CD-ROM drive
- An available Ethernet connection

Check Your Package Contents

These are the items included with your purchase:

If any of the below items are missing, please contact your reseller.



DCS-2100G Internet Camera with Stand



CD-ROM with Manual and Installation Wizard



Antenna



CAT5 Ethernet Cable



5V AC Power Adapter



Using a power supply with a different voltage rating will damage this product and void the warranty.

System Requirements

- Internet Explorer 6.x or above
- CPU: 800MHz or above
- Memory Size: 128MB (256MB recommended)
- VGA card resolution: 800x600 or above

Note: *If using multiple cameras for viewing/recording, the minimum requirements are a 2GHz or above CPU with 512MB memory and a 32MB video card.*

1

Hardware Installation

Connect the Ethernet Cable

Connect an Ethernet cable to the Ethernet connector located on the Internet Camera's bottom panel and attach it to the network.



If you connect this camera directly to a PC, you will need a cross-over Ethernet cable. If you connect the camera into a hub or router, you will be able to use the cable included with your camera.



Attach the External Power Supply

Attach the external power supply to the DC power input connector located on the Internet Camera's bottom panel (labeled DC 5V 2A) and connect it to an AC power outlet.



Power source is confirmed when the LED Power Indicator on the Internet Camera is illuminated.



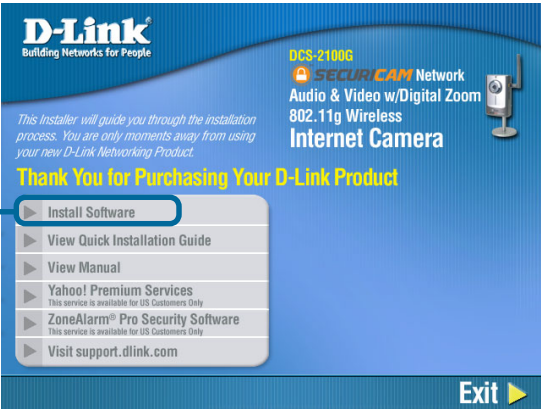
The LED will flash red when you first power on the unit. The LED will not turn green until the camera is configured.

2

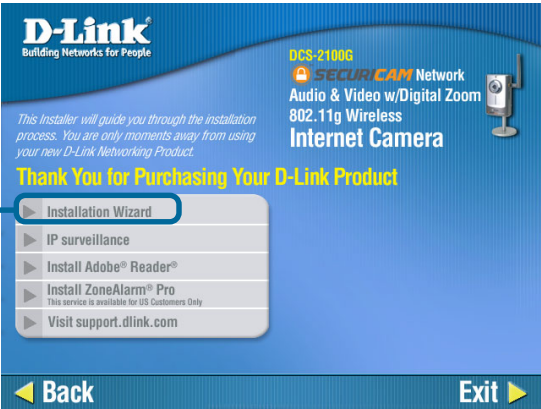
Installing the Installation Wizard

Insert the **DCS-2100G** CD into the CD-ROM drive.

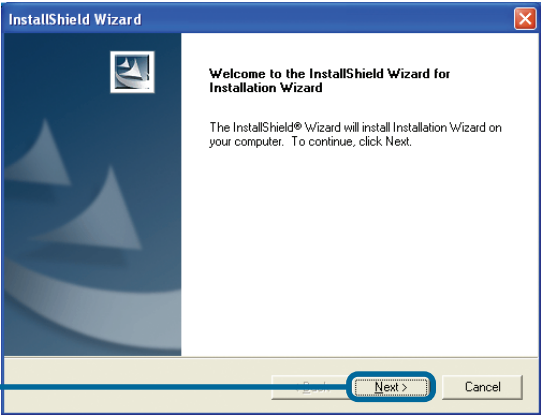
Click on **Install Software**



Click on **Installation Wizard**



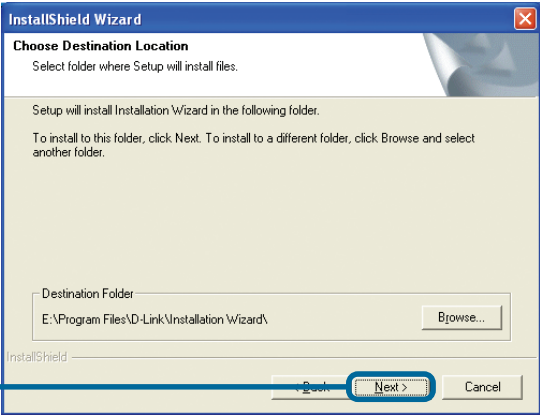
Click **Next**



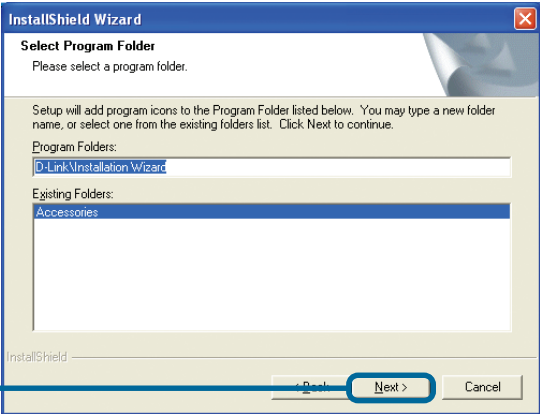
2

Installing the Installation Wizard (continued)

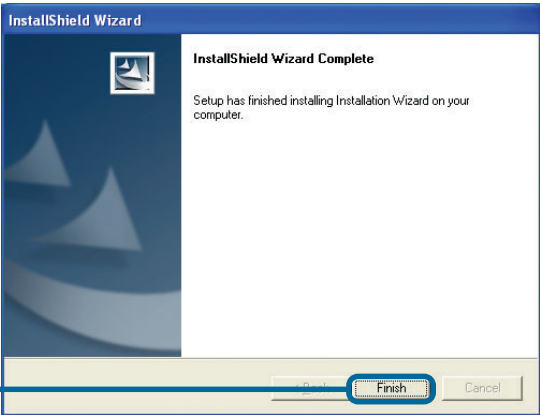
Click **Next**



Click **Next**



Click **Finish**



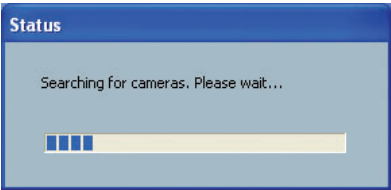
3

Configuring Your Camera with the Installation Wizard

Double click on the **Installation Wizard** that was created on your desktop.

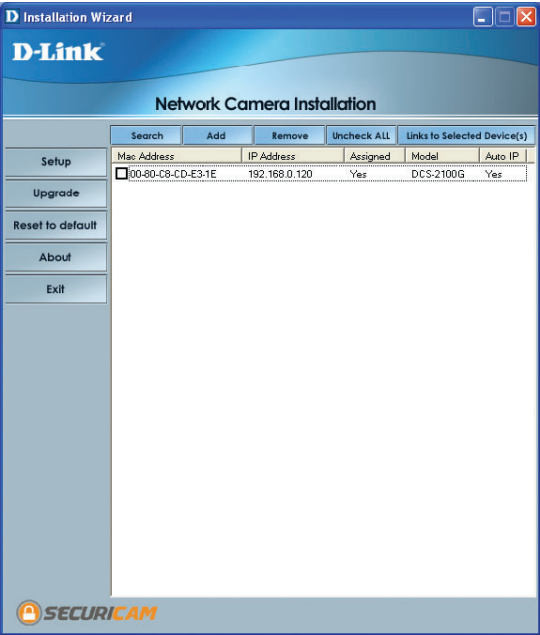


The software will search for cameras.



The Installation Wizard will appear and show the MAC address of the **DCS-2100G** and an IP Address. If you have a DHCP* server on your network, there will be a valid IP Address displayed here, indicated by a “Yes” under the assigned column.

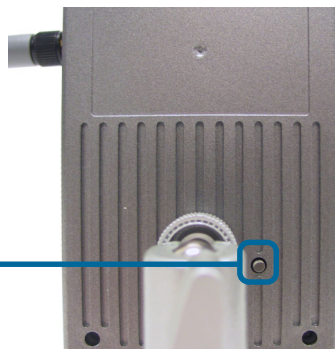
*A DHCP server is a device that supplies IP Addresses to its clients that are on the same network.



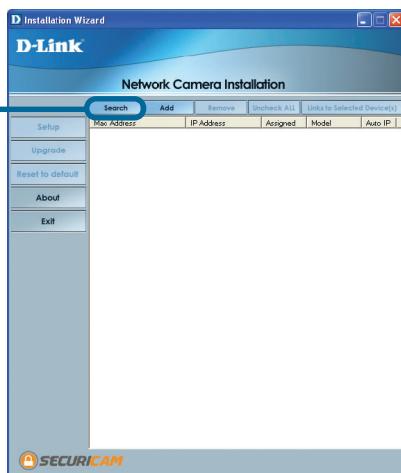
3

Configuring Your Camera with the Installation Wizard (continued)

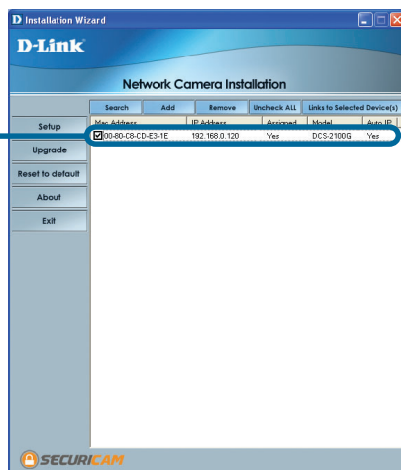
If the **Installation Wizard** does not detect any devices, you will need to reset the camera. Press down on the reset button on the back panel of the camera for 2 cycles (the LED will flash green continuously and stop twice). Let go when the LED starts to flash the second time.



Click **Search** to refresh the list of cameras if needed.



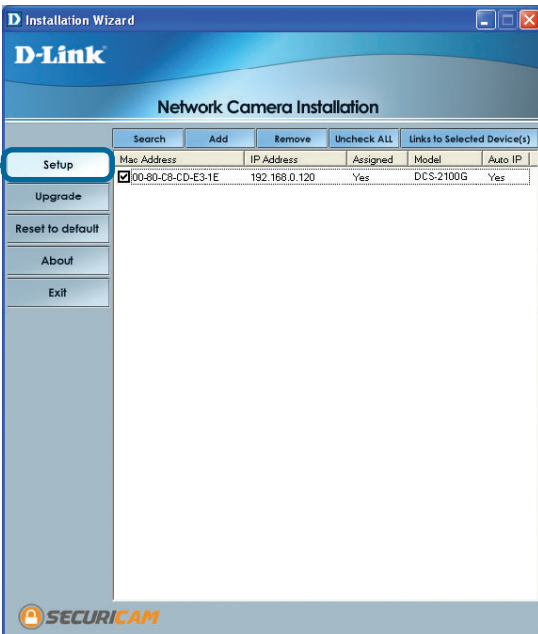
Once the camera appears, select the camera by placing a check mark in the box.



3

Configuring Your Camera with the Installation Wizard (continued)

Click the **Setup** button

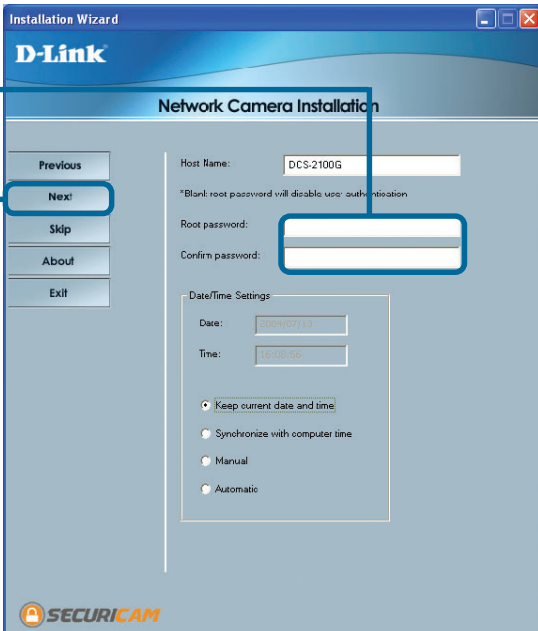


The screenshot shows the 'D-Link Installation Wizard' window for 'Network Camera Installation'. On the left sidebar, the 'Setup' button is highlighted with a blue callout box. The main area contains a table with columns: Search, Add, Remove, Uncheck ALL, Links to Selected Device(s), Mac Address, IP Address, Assigned, Model, and Auto IP. A single device is listed with Mac Address 00-80-C8-CD-E3-1E, IP Address 192.168.0.120, Assigned Yes, Model DCS-2100G, and Auto IP Yes. Below the table are buttons for Upgrade, Reset to default, About, and Exit. The Securicam logo is at the bottom.

Search	Add	Remove	Uncheck ALL	Links to Selected Device(s)	Mac Address	IP Address	Assigned	Model	Auto IP
<input checked="" type="checkbox"/>					00-80-C8-CD-E3-1E	192.168.0.120	Yes	DCS-2100G	Yes

Enter an administrative password in the Root password and Confirm password fields.

Click the **Next** button



The screenshot shows the 'D-Link Installation Wizard' window for 'Network Camera Installation'. The 'Next' button in the left sidebar is highlighted with a blue callout box. The main area shows the 'Host Name' field with 'DCS-2100G'. Below it is a note: '*Blank root password will disable user authentication'. The 'Root password:' and 'Confirm password:' fields are highlighted with a blue callout box. The 'Date/Time Settings' section shows 'Date: 2009/07/13' and 'Time: 16:08:55'. There are four radio button options: 'Keep current date and time' (selected), 'Synchronize with computer time', 'Manual', and 'Automatic'. The Securicam logo is at the bottom.

For details on the Date/Time Settings, please refer to the User Manual on the CD-ROM.

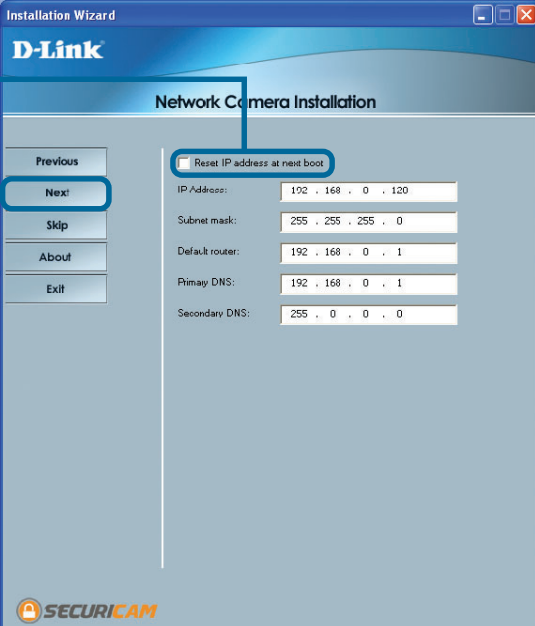
3

Configuring Your Camera with the Installation Wizard (continued)

Uncheck the box labeled
Reset IP address at next boot

Click the **Next** button

If you need to modify the IP settings, please refer to the user manual on the CD-ROM.



Installation Wizard

D-Link

Network Camera Installation

☐ Reset IP address at next boot

IP Address: 192 . 168 . 0 . 120

Subnet mask: 255 . 255 . 255 . 0

Default router: 192 . 168 . 0 . 1

Primary DNS: 192 . 168 . 0 . 1

Secondary DNS: 255 . 0 . 0 . 0


Previous

Next

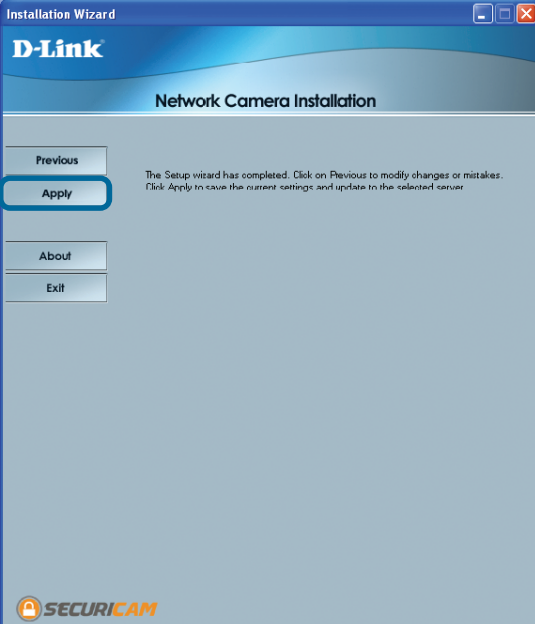
Skip

About

Exit



Click the **Apply** button



Installation Wizard

D-Link

Network Camera Installation


Previous

Apply

About

Exit

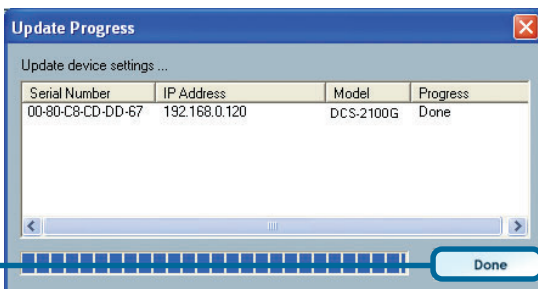
The Setup wizard has completed. Click on Previous to modify changes or mistakes.
Click Apply to save the current settings and update to the selected server.



3

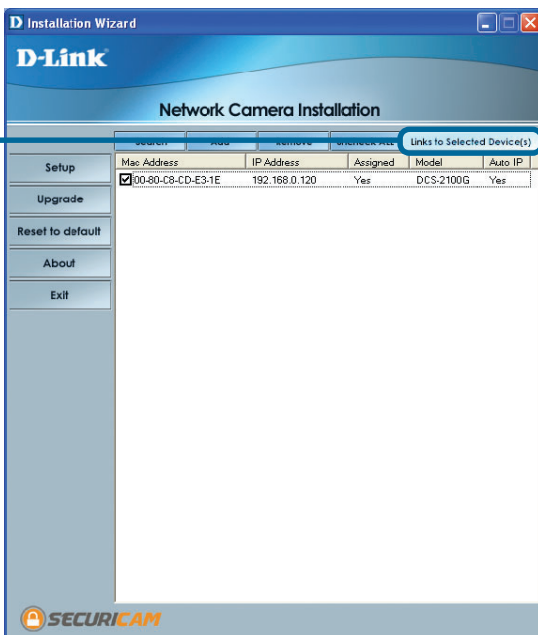
Configuring Your Camera with the Installation Wizard (continued)

After the settings have been saved, the Done button will appear.



Click the **Done** button

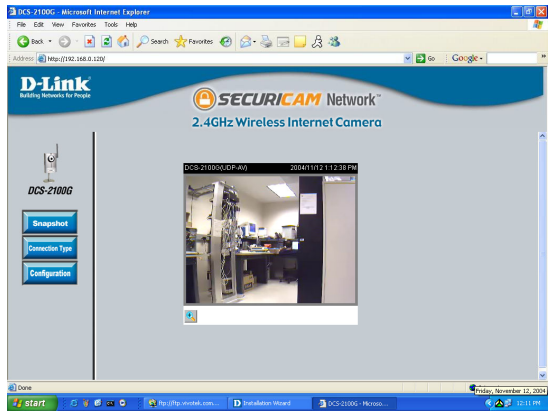
Click the button labeled **Link to Selected Device(s)**



4

Viewing Your Internet Camera

After you click the button labeled **Link to Device(s)**, the **Installation Wizard** will automatically open your Web browser to the IP address of the **DCS-2100G**, in this example it is: **http://192.168.0.120**. Your **DCS-2100G** may have a different IP Address.



The installation and configuration of the **DCS-2100G** Internet Camera is now complete.

Notes

Technical Support

You can find software updates and user documentation on the D-Link website.

D-Link provides free technical support for customers within the United States and within Canada for the duration of the warranty period on this product.

U.S. and Canadian customers can contact D-Link Technical Support through our website, or by phone.

Tech Support for customers within the United States:

D-Link Technical Support over the Telephone:

(877) 453-5465

24 hours a day, seven days a week.

D-Link Technical Support over the Internet:

<http://support.dlink.com>

[email:support@dlink.com](mailto:support@dlink.com)

Tech Support for customers within Canada:

D-Link Technical Support over the Telephone:

(800) 361-5265

Monday to Friday 7:30am to 12:00am EST

D-Link Technical Support over the Internet:

<http://support.dlink.ca>

[email:support@dlink.ca](mailto:support@dlink.ca)

