

DCS-3110

Version 2.0

**Megapixel PoE Network Camera**

 **Quick Install Guide**

Business Class Networking

# Minimum System Requirements

- Windows® XP or Windows Vista®
- At least 256MB of memory (512MB recommended)
- Internet Explorer 6.x or higher
- VGA card resolution: 800 x 600 or above
- CPU: 1.7GHz or above
- An available Ethernet connection

## Package Contents



DCS-3110  
Megapixel PoE Network  
Camera



Camera Stand



CD-ROM with Manual  
and Setup Wizard



Power Adapter



CAT5 Ethernet Cable

**Note:** Using a power supply with a different voltage than the one included with your product will cause damage and void the warranty for this product.

**If any of the above items are missing, please contact your reseller.**

# Hardware Overview

## Connections

### Rear View

**Microphone Connector:** The camera has an internal built-in microphone. To use an external microphone, plug it into the microphone connector.

**Audio Out Connector:** Use the Audio Out connector for 2-way audio connection. Speakers (not included) may be connected to the camera for 2-way audio communication.

**Reset Button**  
Reset is initiated when the reset button is pressed once and held 30 seconds until the power LED flashes through its cycle twice.

#### Status LED

**Blinking Red:** indicates power is being supplied to the camera.

**Solid Green:** indicates that a connection has been established via Ethernet port.

**Blinking Green:** indicates traffic movement in the camera.

If the Ethernet connection is not established the Status LED will not glow.

**Mic On/Off Switch:**  
Select to turn the microphone On or Off.

**Power Receptor**  
Receptor for the supplied power adapter.

#### Ethernet Port (PoE)

Connect the Network Camera to your network using a CAT5 Ethernet cable. This port supports the NWay protocol, allowing the network camera to automatically detect and negotiate the transmission speed of the network.

The Ethernet port can also be used to power the camera by using a PoE switch.

#### DI/DO:

The DCS-3110 provides a general I/O terminal block. The I/O connectors provide the physical interface to send and receive digital signals to and from a variety of external devices.

#### DC12V output :

Support for external device (like IR light)

#### RS485:

Port is designed for external pan/tilt/zoom devices.



## Interfaces Front View

### ICR and Built-in Microphone

#### IR-Cut Removable (ICR) Sensor

The IR-Cut removable sensor will judge the light conditions and then switches from color to B/W accordingly.



Built-in Microphone

### Compact Flash Card Slot



#### CF card slot

CompactFlash (CF) is a mass storage device format used in portable electronic devices. The CF card slot can be seen at the side of the network camera.

**Note:** Ensure to remove the rubber strip before using it.

# Hardware Installation

## Connect the Ethernet Cable

Connect an Ethernet cable to the network cable connector located on the Network Camera's back panel and attach it to the network.



## Connect Using Power-Over-Ethernet

Once you connect an Ethernet cable to your PoE switch or adapter, the Power LED on the DCS-3110 will turn green to indicate a proper connection.

## Attach the External Power Supply

Attach the external power supply to the DC power input connector located on the Network Camera's back panel (labeled DC 12V) and connect the other end to an AC power outlet.



**Note:** The LED on the network camera will turn green, when you have a proper connection. The light might go on and off and your computer may show an intermittent loss of connectivity, this is normal until you have configured your Network Camera.

The package comes with a camera stand with a swivel ball screw head that can be attached to the Network Camera bottom socket cavity. Attach the camera stand to the Network Camera and station it for your application. There are holes located in the base of the camera stand allowing the camera to be mounted to the ceiling, or any wall securely.



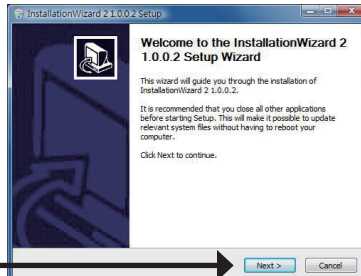
# Software Installation

Turn on the computer and insert the D-Link DCS-3110 CD into the CD-ROM drive. The following step-by-step instructions displayed are shown when using Windows Vista® operating system. The steps and screens are similar when using other Windows® operating systems.

Click **Installation Wizard**

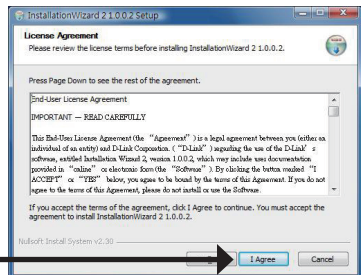


Click **Next** to continue.



Click **Next**

Click **I Agree** to accept the License Agreement.

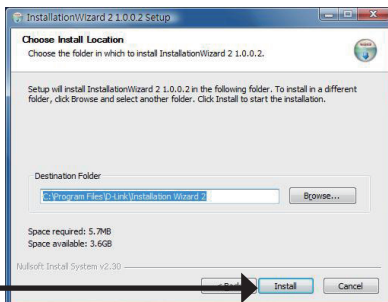


Click **I Agree**

To start the installation click **Install**.

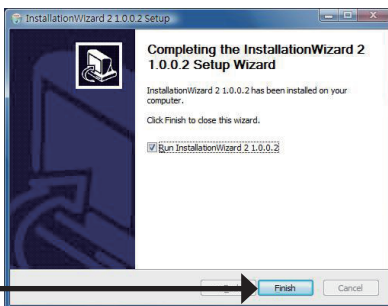
**Note:** The installation may take several minutes to complete.

Click **Install**



Click **Finish** to complete the installation.

Click **Finish**





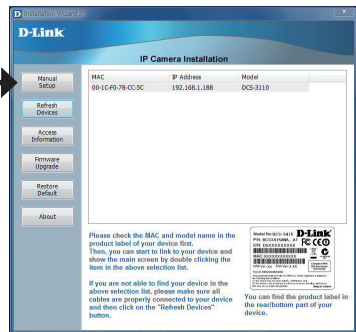
# Configuring Your Camera with the Installation Wizard

Click on the **D-Link Installation Wizard** icon that was created in your Windows Start menu.

The Installation Wizard will appear and show the MAC address of your DCS-3110 and an IP Address (which may or may not be correct depending on what you have your DCS-3110 connected to). If you have a DHCP server on your network, there will be a valid IP Address displayed here.

**Note:** A DHCP server is a device that supplies the same IP address.

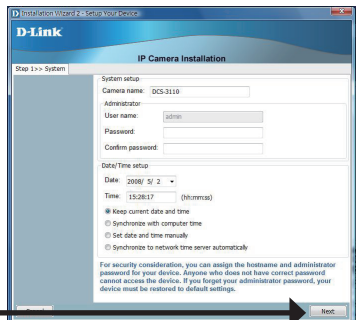
Click **Manual Setup**



Enter the admin ID and password.

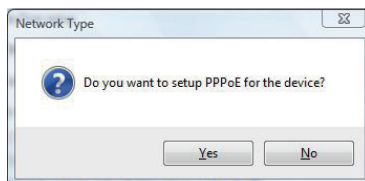
**Note:** The default Admin ID is *admin* with the password left blank.

Click **Next**

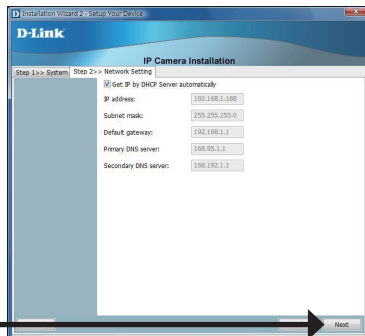


## Configuration

A new window will pop up to ask if you want to setup a PPPoE for the device. Click **No** for quick setup. For further information refer to the user manual for details.

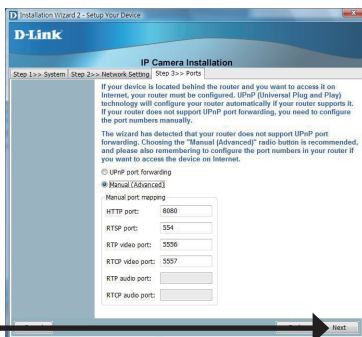


Check the **Get IP by DHCP Server automatically** box to obtain a new IP address every time the camera starts up. Click **Next** to continue.



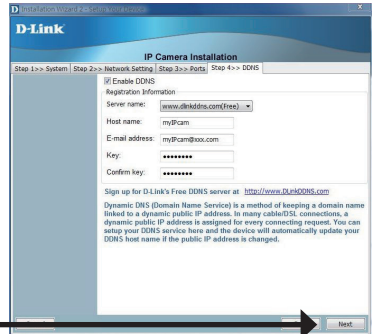
Click **Next**

Select **UPnP Port Forwarding** if your router supports this function. If not, choose **Manual** to manually enter your port numbers. Click **Next** to continue.



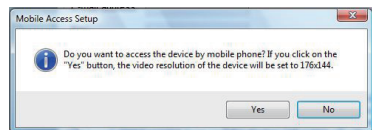
Click **Next**

Click **Next** to continue.

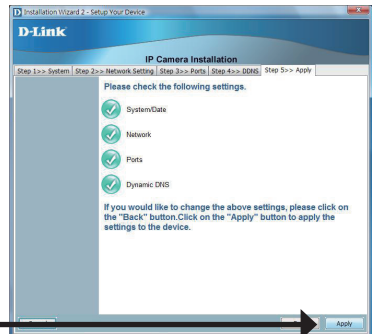


Click **Next**

A window will pop up asking you if you want to access the DCS-3110 via mobile phone. Clicking **Yes** will set the video resolution to 176x144.



Click **Apply** to apply the settings listed in the window to the device. Application may take a few minutes to process.



Click **Apply**

A window will pop up to confirm that the application was successfully configured. Click **OK** to continue.

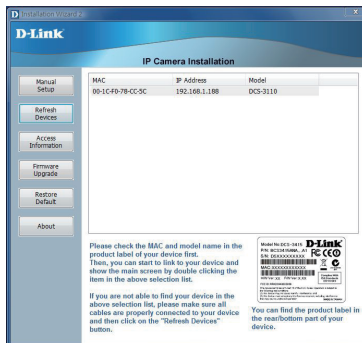
A new window will pop up displaying the links/addresses to access your device. Click **Add to my favorite** to save the address and then click **Exit** to complete the installation.

Click **Exit**

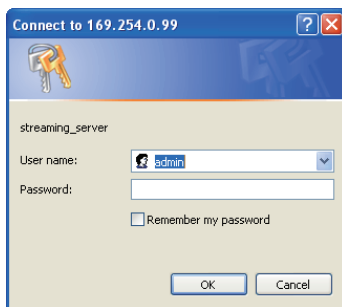


Double-click the DCS-3110 to launch the camera's web configuration page.

**Note:** Please refer to the user manual for more information.



Enter **admin** as the default username and leave the password blank. Click **OK** to continue.



This section shows your camera's live video. You can control your settings using the buttons at the bottom. For more information on using the web configuration, please refer to the user manual.



# Notes

# Notes

---

# Technical Support

D-Link's website contains the latest user documentation and software updates for D-Link products.

U.S. and Canadian customers can contact D-Link Technical Support through our website or by phone.

## United States

### Telephone

(877) 354-6555

### World Wide Web

<http://support.dlink.com>

## Canada

### Telephone

(877) 354-6560

### World Wide Web

<http://support.dlink.ca>



Version 2.0  
January 5, 2010  
625006002G

Copyright ©2008-2010 D-Link Corporation/D-Link Systems, Inc. All rights reserved. D-Link and the D-Link logo are registered trademarks of D-Link Corporation or its subsidiaries in the United States and other countries. Other trademarks are the property of their respective owners. Actual data throughput will vary. Network conditions and environmental factors, including volume of network traffic, building materials and construction, and network overhead lower actual data throughput rate. Product specifications, size and shape are subject to change without notice, and actual product appearance may differ from that depicted on the packaging. Visit [www.dlink.com](http://www.dlink.com) for more details.