



***DCS-5029L***



**HD Pan & Tilt Day/Night Network Camera**  
**Cloud Camera**

**Quick Install Guide**

**D-Link®**

---

# Package Contents



DCS-5029L HD Pan & Tilt Day/Night Network Camera



Ethernet Cable



Audio In/Out Cable



Power Adapter



Mounting Kit



Quick Install Guide

If any of the above items are missing, please contact your reseller.

## Minimum Requirements

- Wired 10/100 Fast Ethernet or Wireless 802.11g/n network (Wireless N network recommended for optimum performance)

### Computer with:

- 1.3GHz processor or above and at least 128MB RAM
- Windows® 8, 7, Vista®, or Mac OS® X 10.6 or higher

### Web Browser

- Internet Explorer® 7, Firefox, Safari 4, or Chrome
- Installed and enabled Java and ActiveX® controls

### Network Device and Service

- A router (D-Link Cloud Router is recommended)
- An Internet connection
- An e-mail account (required to create a mydlink account)

---

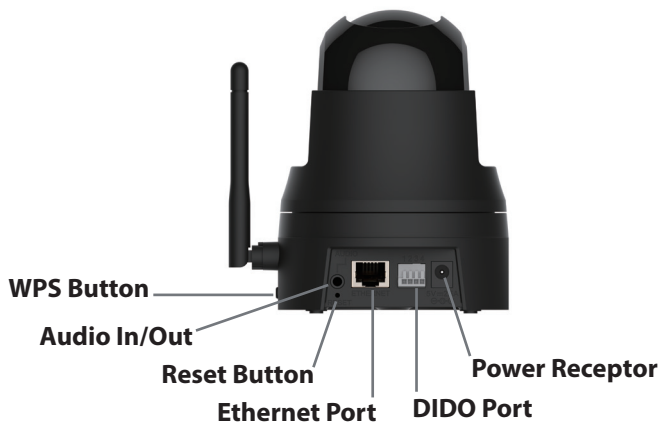
# Product Overview

## Front



**\*Note:** If you see a white haze when viewing in night vision mode, the IR lights on the camera may be reflecting off a nearby surface. Try repositioning the camera in order to avoid glare from the IR LEDs.

## Back

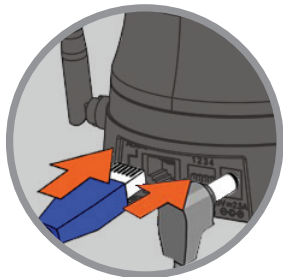


# Zero Configuration Setup

The Zero Configuration Setup will only work with a registered Cloud Router and an active mydlink account. Your Cloud Router will automatically assign your network settings (both wired and wireless) to your camera, and add it to your mydlink account. If you do not have a D-Link Cloud Router, skip to the **Easy Setup** section on the next page.

1

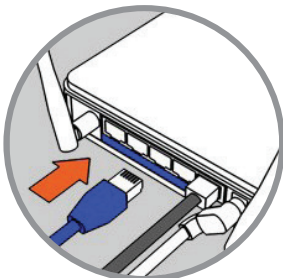
Attach the power supply to the power receptor located on the back of the DCS-5029L and connect it to a wall outlet or power strip. Power is confirmed when the Power LED is lit.



2

**If using an Ethernet connection:** Connect the included Ethernet cable to the Ethernet port located on the back of the DCS-5029L and connect it to your router.

**If using a wireless connection:** Press and hold the **WPS** button on the side of the camera for five seconds. The blue WPS status LED will start to blink. Then, press the **WPS** button on your Cloud Router within two minutes.



3

From any PC, open a web browser, go to **<http://www.mydlink.com>** and log into your account. Once mydlink detects your camera, a notice will appear that there is a new device detected. Click on your camera from the **New Devices** list and then click **Yes** to add your camera.



**Your setup is complete!**

## Easy Setup (All Other Routers)

If you do not have a D-Link Cloud Router, you can use any Windows or Mac computer to go through the Setup Wizard, which will guide you through the installation process, from connecting your hardware to configuring your camera.



Download the Setup Wizard from <http://www.mydlink.com/support>.

**Windows Users** - Extract ("unzip") the files to a folder on your computer and then double-click the **autorun.exe** file.

**Mac Users** - Download the Mac OS Setup Wizard. Open the **SetupWizard** file and launch the application.

After about 20-30 seconds, the Setup Wizard will open, which will guide you step-by-step through the installation process from connecting your hardware to configuring your camera and registering it with your mydlink account.



# Start mydlink

- 1 Open a web browser on any computer connected to the Internet.
- 2 Enter **<http://www.mydlink.com>** in the address bar and press **Enter**.
- 3 Sign in with your mydlink account registered in the Setup Wizard.



- Windows does not have Java installed by default. Download it from **<http://www.java.com>**.
- In Mac OS X 10.7.x, Java applets are disabled by default. Click the **Finder > Applications > Utilities > Java Preferences** and check the **Enable applet plug-in and Web Start applications** option.
- The ActiveX® controls in IE will install automatically if needed. We suggest that you make sure that you have enabled the related options in **Tools > Internet Options > Security > Custom Level**.

## mydlink Lite App (Free)

Search for “mydlink lite” to download and install the app on your smartphone or tablet when connected to the Internet. You can also find the app by scanning the QR code below with a QR code scan app.



mydlink Requirements: for mydlink and mydlink app requirements refer to: [www.mydlink.com](http://www.mydlink.com)

## mydlink+ App (Paid - Tablet Only)

Search for the word “mydlink+” to download and install the app on your tablet when connected to the Internet. You can also find the app by scanning the QR code below with a QR code scan app.



mydlink Requirements: for mydlink and mydlink app requirements refer to: [www.mydlink.com](http://www.mydlink.com)

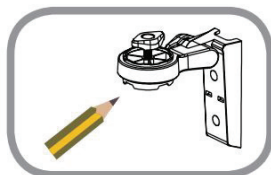
# Mount the Camera

Please refer to the steps below to assist you with mounting the camera.

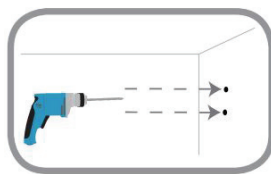


We suggest that you configure the camera before mounting.

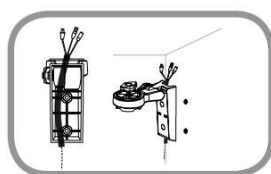
1. Place the arm mount where you want to position the camera and use a pencil to mark the holes. Make sure you allow adequate space for the necessary cables to be routed. The camera can be mounted to either side of the camera shoe.



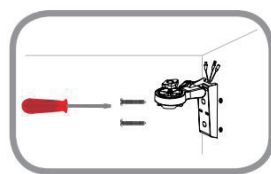
2. Depending on the material of the wall or ceiling, use a 6mm drill bit to drill two holes where you marked. If the wall is made out of concrete, after drilling the holes, insert the plastic anchors, and then insert the screws.



3. The power and Ethernet cables can be concealed behind the mounting bracket. When you run the cables through the channel, secure them with the built-in guides. Leave enough cable length protruding from the top to connect the cables to the camera.

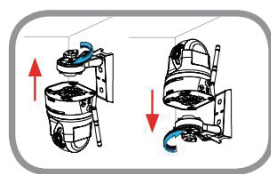


4. Fasten the arm mount to the wall using the screws provided. Lightly pull on the arm mount to make sure it is fastened securely.



Do not overtighten the screws as this may crack the bracket.

5. Align the camera base mounting guides with the camera shoe and thumbscrew on the arm mount. Tighten the thumbscrew to lock the camera in place.



---

# Technical Support

This guide is only for the first time configuration. Please refer to the user manual to learn more or visit **<http://www.mydlink.com>** for more information. Also feel free to contact us. U.S. customers can contact D-Link Technical Support through our website.

## USA



<http://support.dlink.com>

# D-Link®

Version 1.0\_130x183

June 4, 2014

RMN0101382

©2014 D-Link. All Rights Reserved. D-Link and the D-Link logo are trademarks or registered trademarks of D-Link Corporation or its subsidiaries. All other third party marks mentioned herein may be trademarks of their respective owners. Maximum wireless signal rate derived from IEEE Standard 802.11g and 802.11n specifications. Actual data throughput will vary. Network conditions and environmental factors, including volume of network traffic, building materials and construction, and network overhead, lower actual data throughput rate. Environmental conditions will adversely affect wireless signal range. Product specifications, size and shape are subject to change without notice, and actual product appearance may differ from that depicted on the packaging. This publication may not be reproduced, in whole or in part, without prior express written permission from D-Link Systems, Inc.