



***DCS-6004L/DCS-6005L***



**HD Mini Dome Network Camera**  
**Cloud Camera**

**Quick Install Guide**

**D-Link®**

---

# Package Contents



DCS-6004L HD PoE Mini Dome Network Camera or  
DCS-6005L HD Wireless Mini Dome Network Camera



Ethernet Cable



Power Adapter



Ethernet Extension (RJ-45 Coupler)



Audio Out Cable



Mounting Plate



Collar\*



Quick Install Guide

If any of the above items are missing, please contact your reseller.

**\*Note:** The DCS-6004L comes with the black collar attached. The DCS-6005L comes with the white collar attached.

---

# Minimum Requirements

## Computer with:

- PC with 1.3GHz processor or above and at least 128MB RAM
- Windows® 8, 7, Vista® or XP SP3
- Mac OS® X, 10.6 or higher
- Existing 10/100 Ethernet-based network (DCS-6004L/6005L) or 802.11g/n wireless network (DCS-6005L)

## Web Browser

- Internet Explorer® 7, Firefox®, Safari® 6, or Chrome™

## Network Device and Service

- A router (D-Link Cloud Router is recommended)
- A broadband Internet connection
- An e-mail account (required to create a mydlink account)

## mydlink Requirements

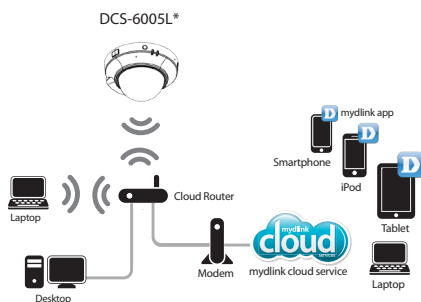
- For mydlink and mydlink app requirements refer to:  
**<http://www.mydlink.com>**

## Hardware Overview



1	<b>Status LED</b>	Indicates the camera's current status
2	<b>WPS Button</b>	Push to initialize WPS on the camera (only on DCS-6005L)
3	<b>WPS LED</b>	Indicates the current status of WPS (only on DCS-6005L)
4	<b>Reset Button</b>	Press and hold the reset button for six seconds to reset
5	<b>microSD Card Slot</b>	Used to add storage for recording
6	<b>IR LED</b>	Used to illuminate the camera's field of view at night
7	<b>Camera Sensor</b>	HD-capable CMOS sensor

# What is mydlink™?



**\*Note:** DCS-6005L is shown above. DCS-6004L requires an Ethernet cable.

With a mydlink-enabled camera, you can stay connected to everything you love from anywhere, anytime. The mydlink service can be accessed by a web browser and also provides an optional downloadable mydlink app that allows you to have a better experience on your mobile devices. With the mydlink app, you can quickly and easily view your camera feed from anywhere using a Wi-Fi, 3G, or 4G connection.

## mydlink Lite App (Free)

Search for “mydlink lite” to download and install the app on your smartphone or tablet when connected to the Internet. You can also find the app by scanning the QR code below with a QR code reader.



System Requirements: Refer to <http://www.mydlink.com>

## mydlink+ App (Paid - Tablet Only)

Search for the word “mydlink+” to download and install the app on your tablet when connected to the Internet. You can also find the app by scanning the QR code below with a QR code reader.



System Requirements: Refer to <http://www.mydlink.com>

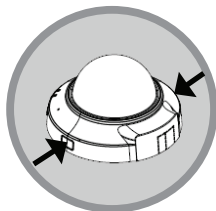
---

# Zero Configuration Setup

**If you have a D-Link Cloud Router**, you can take advantage of Zero Configuration Setup. This feature automatically configures your camera's settings for you and adds it to your mydlink account. If you do not have a D-Link Cloud router, you can use the Setup Wizard to install and configure your camera. (Refer to instructions on the next page.)

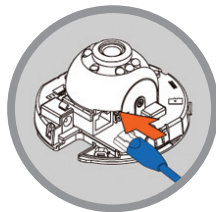
1

Remove the camera housing by squeezing housing release buttons on both sides of the camera.



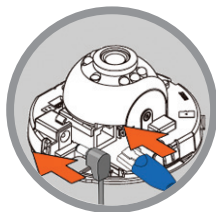
2

Connect the included Ethernet cable to the network cable connector located on the camera, and attach it to the network.



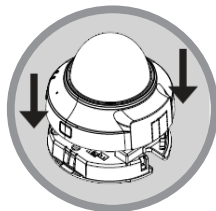
3

If you have the DCS-6004L and you will be using Power over Ethernet, you can skip this step. Otherwise, attach the external power supply to the power input connector located on the inside of the camera, and connect it to a wall outlet or power strip.



4

Reattach the camera housing by lining up the access port on the housing with the access port on the camera base. Firmly push down until the camera housing snaps back onto the camera base.



5

From any computer, open a web browser, go to <http://www.mydlink.com> and log into your account.

Click on the device name when the notice appears to add the camera to your account.

i

If you have the DCS-6005L and you wish to connect your camera to your router wirelessly, you can simply disconnect the Ethernet cable and move the camera to its intended location after you have added the camera to your mydlink account.



New Devices!

DCS-6004L

## Setup Wizard

**If you do not have a D-Link Cloud Router**, use any Windows or Mac computer to run the Setup Wizard, which will help you install and configure your camera.

i

Please download the Setup Wizard from <http://www.mydlink.com/support>.

**Windows Users** - Extract ("unzip") the files to a folder on your computer and then double-click the **autorun.exe** file.

**Mac Users** - Download the Mac OS Setup Wizard. Open the **SetupWizard** file and launch the application.

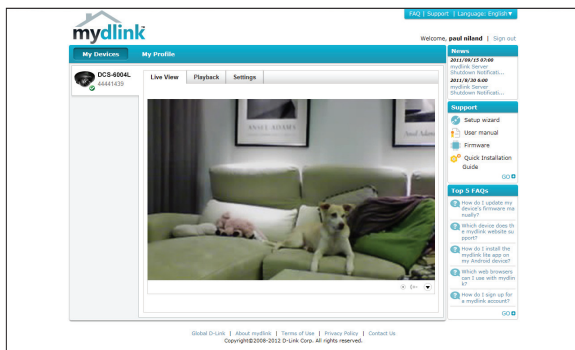
When the Setup Wizard appears, it will guide you step-by-step through the installation process from connecting your hardware to configuring your camera and registering it with your mydlink account.



# Start mydlink

Follow the instructions below to access your mydlink account:

- 1 Open a web browser on any computer connected to the Internet.
- 2 Enter **<http://www.mydlink.com>** in the address bar and press **Enter**.
- 3 Sign in with your mydlink account registered in the Setup Wizard.



Browser Requirements:  
Java  
Active X



- Windows does not have Java installed by default. Please download it from **<http://www.java.com>**.
- In Mac OS X 10.7.x, Java applets are disabled by default. Click the **Finder > Applications > Utilities > Java Preferences** and check the **Enable applet plug-in and Web Start applications** option.
- The ActiveX® controls in IE will install automatically if needed. We suggest that you make sure that you have enabled the related options in **Tools > Internet Options > Security > Custom Level**.

---

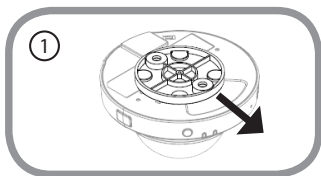
# Mount the Camera

Refer to the steps below to assist you with mounting the camera.

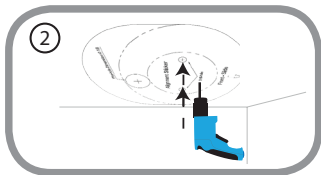


We suggest that you configure the camera before mounting. If you plan on passing the cables for the camera through the wall or ceiling, make sure you determine the position and angle of the camera you want **before** drilling a hole for the cables in Step 6.

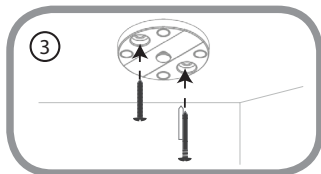
1. The camera must be separated from the mounting base to expose the holes in the mounting base. Remove the camera head from the mounting base by firmly holding the camera with the D-Link logo facing you and then sliding the mounting base towards you.



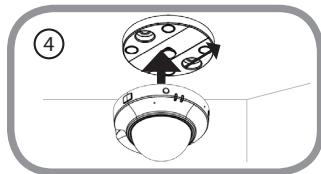
2. Place the mounting base alignment sticker where you want to position the camera. Depending on the material of the wall or ceiling, use proper tools to drill two holes where you placed the alignment sticker. If the wall is made out of concrete, drill the holes first, then insert the plastic anchors to support the screws.



3. Align the mounting base holes with the holes in the wall when you position the mounting base. Use the supplied screws to attach the mounting base to the surface of the wall or ceiling.

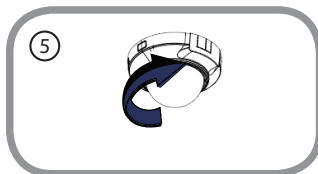


4. With the D-Link logo facing you, reattach the camera to the mounting plate by sliding the camera towards you until it locks into position, and replace the cover.



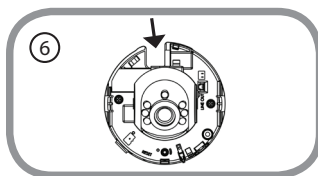


- 
5. Adjust the angle of the camera as desired by rotating it.



**Note:** If you are going to pass the cables for the camera through the wall or ceiling, remove the cover and proceed to step 6.

6. **Optional Step** - With the camera in the desired position, use a pencil to mark the hole for the cables. **Before drilling, make sure the hole for the cables will be hidden by the camera.** Drill the hole and pass the cables through.



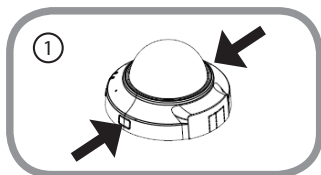
**Note:** After you pass the cables for the camera through the wall or ceiling, lock the camera into position as described in step 4 and replace the cover.

---

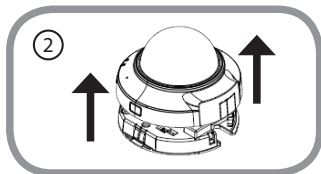
## Adjusting the Viewing Angle

Refer to the steps below for adjusting the viewing angle of the camera.

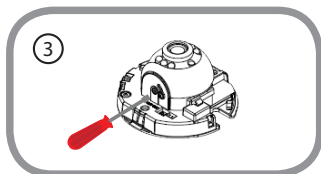
1. The camera housing needs to be separated from the camera base to expose the screw used to adjust the viewing angle. Remove the camera housing from the camera base by squeezing the housing release buttons on either side of the camera.



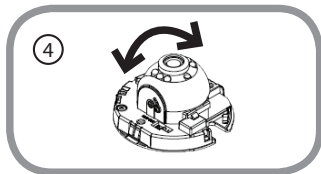
2. Lift the camera housing up off the camera base once the housing has been released.



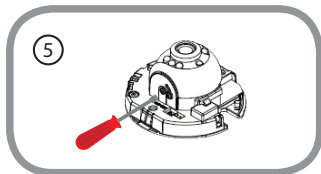
3. Use a Phillips screwdriver to loosen the retaining screw used to secure the viewing angle of the camera lens.



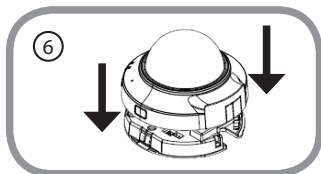
4. Manually adjust the viewing angle back and forth to your desired location.



5. Use a Phillips screwdriver to tighten the retaining screw used to secure the viewing angle of the camera lens.



6. Reattach the camera housing by lining up the access port on the housing with the access port on the camera base. Firmly push down until the camera housing snaps back onto the camera base.



---

## Troubleshooting

### 1. HOW DO I CONNECT MY CAMERA USING WPS? (DCS-6005L ONLY)

We recommend that you use either the Zero Configuration or Setup Wizard method described earlier in this guide as they will automatically configure your camera for your wireless network.

If you wish to use WPS to connect your camera, follow these steps:

- Press and hold the WPS button on the back of the camera for five seconds. The blue WPS status LED will blink.
- Press the WPS button on your wireless router or access point within 60 seconds. On some routers, you may need to log into the web interface and then click an onscreen button to activate the WPS feature. If you are not sure where the WPS button is on your router or access point, please refer to your router's user manual.

### 2. WHAT SHOULD I DO IF I FORGET MY PASSWORD?

You must reset your camera. Unfortunately, this will change your settings back to the factory default settings. To reset your camera, use an unfolded paperclip to press and hold the **RESET** button for a minimum of six seconds while your camera is plugged in.



### 3. HOW DO I CONNECT A SPEAKER TO MY CAMERA?

To connect a speaker to the camera, first remove the camera cover. Then plug the included Audio Out Cable into the white connector on the face of the camera labelled "LINE OUT".

### 3. HOW DO I FIT THE COVER OVER MY CAMERA WHEN THE CABLES ARE CONNECTED?

If you do not choose to pass the cables for the camera through the wall or ceiling, in order to fit the cover over the camera when cables are connected, you must remove the perforated tabs from the camera cover. Just locate the tabs along the rim of the cover and press until they break loose.

---

# Technical Support

This guide is only for the first time configuration. Please refer to the user manual to learn more or visit **<http://www.mydlink.com>** for more information. Also feel free to contact us. U.S. and Canadian customers can contact D-Link Technical Support through our website.

## USA



<http://support.dlink.com>

## Canada



<http://support.dlink.ca>

# D-Link®

Version 1.0\_90x130

March 28, 2014

all633L1UD03

©2014 All rights reserved. D-Link and the D-Link logo are registered trademarks of D-Link Corporation or its subsidiaries. Other trademarks are the property of their respective owners. Maximum wireless signal rate derived from IEEE Standard 802.11g and 802.11n specifications. Actual data throughput will vary. Network conditions and environmental factors, including volume of network traffic, building materials and construction, and network overhead, lower actual data throughput rate. Environmental factors will adversely affect wireless signal range. Product specifications, size and shape are subject to change without notice, and actual product appearance may differ from that depicted on the packaging. Visit [dlink.com](http://dlink.com) (US) or [dlink.ca](http://dlink.ca) (Canada) for more details.

---