

# QUICK INSTALL GUIDE

DCS-6620G

VERSION 1.1



**D-Link<sup>®</sup>**

**INTERNET CAMERA**

# System Requirements

Minimum System Requirements:

- Internet Explorer Version 6.0 or above
- CPU Pentium 4, 2.0GHz plus processor
- Memory Size: 128MB or above
- 32MB AGP Video Card

## Package Contents



**DCS-6620G**  
**Internet Camera & Remote Control**



**CD-ROM**  
**with**  
**Manual & Installation Wizard**



**2 Antennas**



**CAT5 Ethernet Cable**



**Camera Stand**



**A/V Cables**



**12V AC Power Adapter**



Using a power supply with a different voltage rating will damage this product and void the warranty.

*If any of the above items are missing, please contact your reseller.*

# Hardware Overview

## Front

Motorized Zoom Lens

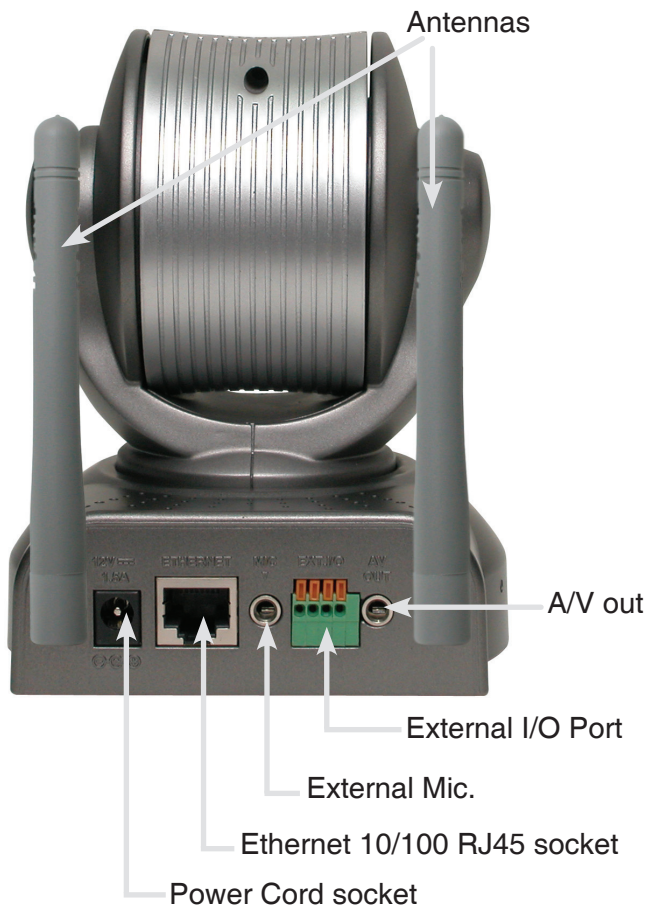


Built-In  
Microphone

Link LED

Power LED

## Rear



Connect the power adapter jack to the Network Camera before plugging in to the power socket. This will reduce the risk of accidental electric shock.

# Hardware Installation

## Connect the Ethernet Cable

Connect one end of the Ethernet cable to the network cable connector located on the back panel of the DCS-6620G, and attach the other end to a router, switch, or gateway on the network.



If you connect this camera directly to a PC, you will need a cross-over Ethernet cable. If you plug the camera into a hub or router, you will be able to use the cable included with your camera.



It is required that an Ethernet cable is used during initial setup. Once your wireless configuration is set, you may disconnect the Ethernet cable and reboot your camera to connect to your wireless network.



## Attach the External Power Supply

Attach the external power supply to the DC power input connector located on the back panel of the DCS-6620G (labeled DC 12V), and connect it to an AC power outlet.

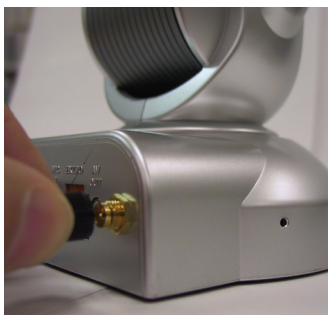


Power source is confirmed when the LED Power Indicator on the Network Camera is illuminated.

Both the red and green LEDs will flash alternately and only the red LED will remain lit. The green LED will not come on until you have configured your camera.

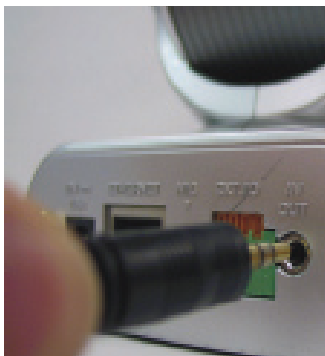
## Attach the Antennas

Attach the two antennas to the connectors located on the back panel of the DCS-6620G.



Attach the A/V cable to the A/V out connector if you wish to connect the **DCS-6620G** to your TV set.

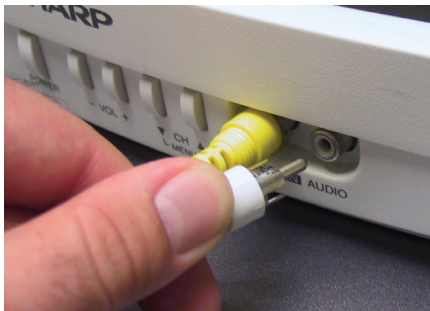
**Note:** Audio Out from the A/V port is for connecting a speaker to the camera so that a person in front of the camera can hear the person on the other end of the communication. Video out from the A/V port is for connecting to a TV for viewing the camera's video feed or VCR for recording purposes.



Attach the yellow RCA connector to the "video" connector on your TV.



Attach the white RCA cable to the "audio" connector on your TV set.



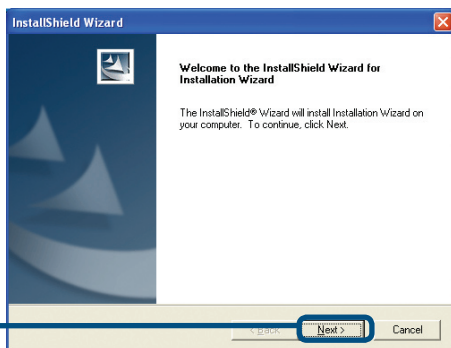
# Installation Wizard

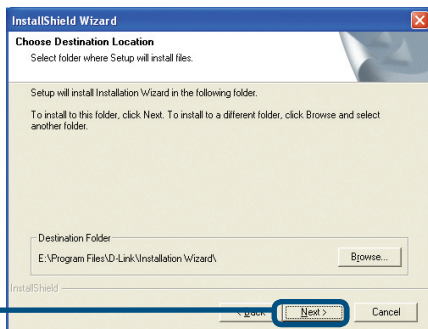
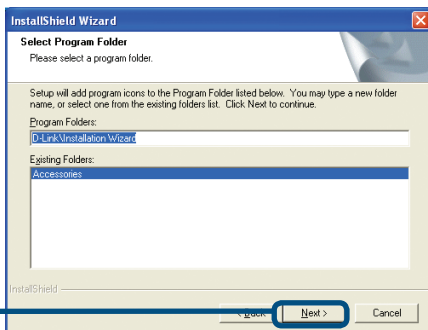
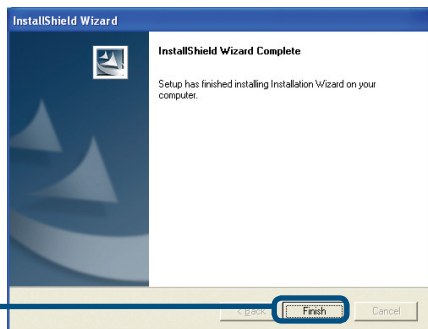
Insert the DCS-6620G CD into the CD-ROM drive. If the CD Autorun function does not automatically start on your computer, click Windows® Start > Run. In the Run command box type "**D:\DCS6620G.exe**", where D: represents the drive letter of your CD-ROM. If it does start, proceed to the next screen.

Click **Installation Wizard**



Click **Next**



Click **Next**Click **Next**Click **Finish**

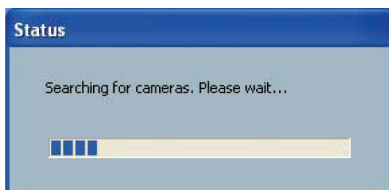


# Camera Configuration

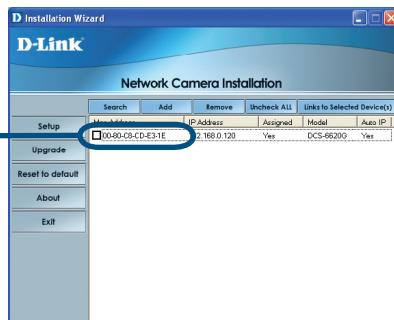
Double-click on the **Installation Wizard** icon, which should have been created on your desktop.



The software will search for cameras.



The **Installation Wizard** will now show a MAC address of the **DCS-6620G** and an IP Address (which may or may not be correct depending on what you have your **DCS-6620G** connected to). If you have a DHCP\* server on your network, there will be a valid IP Address displayed here. After a few seconds, the “assigned” column will display **yes**, indicating that the displayed IP Address is now assigned to the camera.



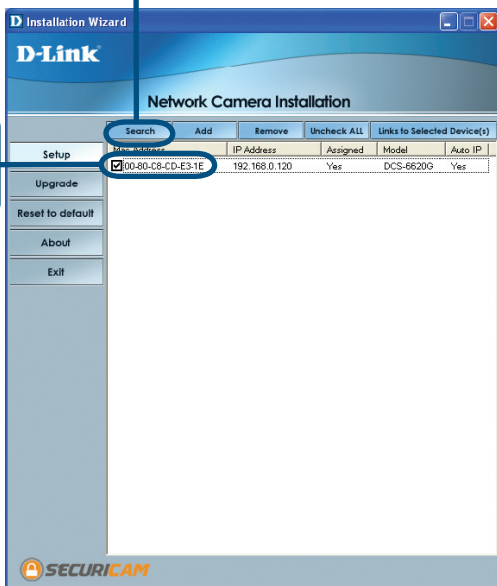
\*A DHCP server is a device that supplies IP Addresses to its clients that are on the same network.

If the **Installation Wizard** does not display any devices, you will need to find a tool small enough to fit into the reset hole and softly press down a switch for 2 cycles (about 5-7 seconds). The red and green LEDs will blink continuously and stop twice. Let go when the red LED starts to flash the second time.

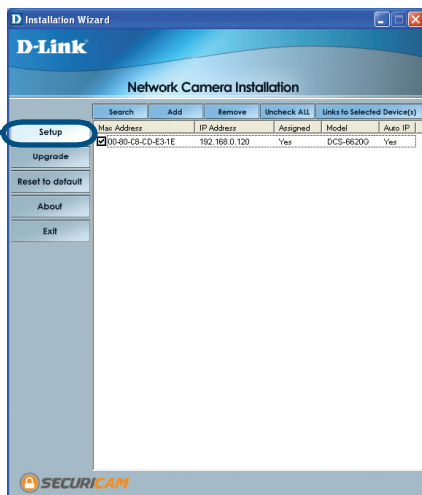


Click **Search** to refresh the list of cameras if needed.

Once the camera appears, select the camera by placing a **Checkmark** in the box.

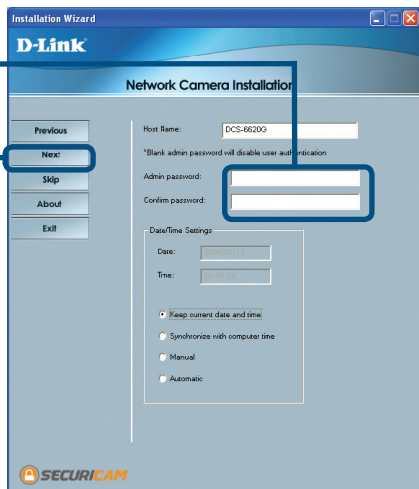


Click the **Setup** button.



Enter an administrative password in the Admin password and Confirm password fields.

Click the **Next** button.

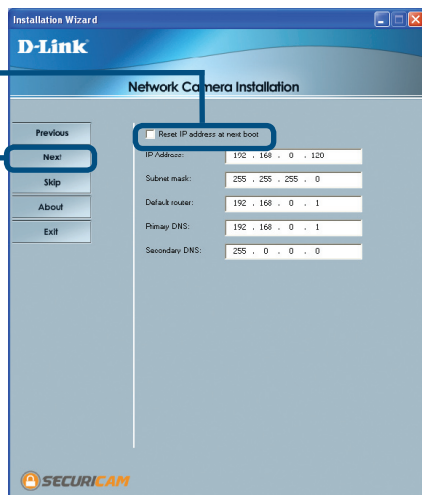


For details on the Date/Time Settings, please refer to the User Manual on the CD-ROM.

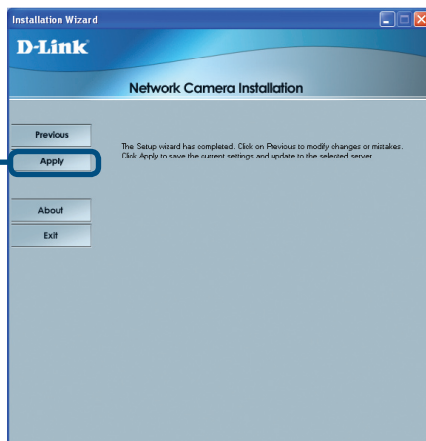
Uncheck the box labeled Reset IP address at the next boot.

Click the **Next** button.

If you need to modify the IP settings, please refer to the user manual on the CD-ROM.

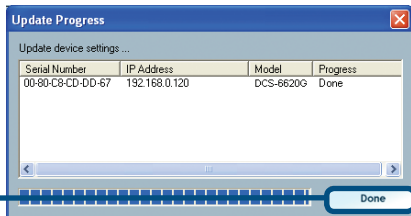


Click the **Apply** button.

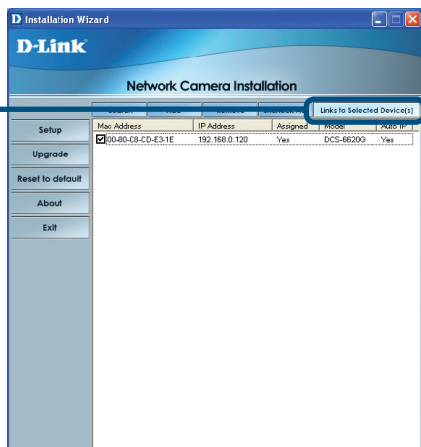


After the settings have been saved, the Done button will appear.

Click the **Done** button.



Click the button labeled **Link to Selected Device(s)**.



After you click the button labeled **Link to Devices(s)**, the **Installation Wizard** will automatically open your Internet browser to the IP Address of the **DCS-6620G**, in this example it is: <http://192.168.0.146>. Your **DCS-6620G** may have a different IP Address.

Click on **Configuration** to set up your wireless settings for the **DCS-6620G** to be consistent with your network.

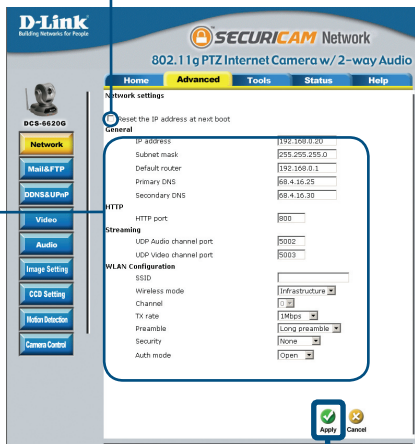


Leave the box titled **This camera can be found by installer whenever it starts up**, unchecked to avoid running this install application each time you boot up the **DCS-6620G**. Check this box if you need to change the IP Address next time the **DCS-6620G** boots up.

If you have a DHCP server on your network, you will already have a valid IP Address in these fields.

If you will be using the **DCS-6620G** in a wireless network, the following page explains the importance of each field and what is required for you to be able to connect to your wireless network.

If you do not have a DHCP server on your network, fill out your **IP Address**, **Subnet mask**, **Gateway** and at least one **DNS IP Address** respectively on this page. If you do not know what to put in these fields, please contact your System Administrator or your Internet Service Provider.



Click **Apply**

At this point, we highly recommend that you click on **Configuration --> Tools --> Admin**, from the Home page to set up a password for security purposes.

Enter the administrative password. Click **Save** then "**X**" at the top right-hand corner of your browser to close the page.

D-Link Building Networks for People

SECURICAM Network

802.11g PTZ Internet Camera w/ 2-way Audio

Home Advanced Tools Status Help

Administrator settings

Administrator's password

New password [text input]  
Confirm password [text input] Save

User name [text input]  
User password [text input]

☐ I/O access ☐ Camera Control  
☐ Talk ☐ Listen Add

Manage user

User name -- no user -- delete edit

Guest account

☐ Allow 'demo' account to view

**The installation of the configuration of the DCS-6620G Network Camera is now complete.**

# Technical Support

D-Link's website contains the latest user documentation and software updates for D-Link products.

U.S. and Canadian customers can contact D-Link Technical Support through our website or by phone.

## United States

### Telephone

(877) 453-5465

### World Wide Web

<http://support.dlink.com>

## Canada

### Telephone

(800) 361-5265

### World Wide Web

<http://support.dlink.com>



Version 1.10(B)

2007/12/03

620021001G

©2005 D-Link Corporation/D-Link Systems, Inc. All rights reserved. D-Link, the D-Link logo, and Securicam are trademarks or registered trademarks of D-Link Corporation or its subsidiaries in the United States and other countries. Other trademarks are the property of their respective owners. All references to speed are for comparison purposes only. Product specifications, size, and shape are subject to change without notice, and actual product appearance may differ from that depicted herein. Visit [www.dlink.com](http://www.dlink.com) for more details.

DCS-6620G 04052005