

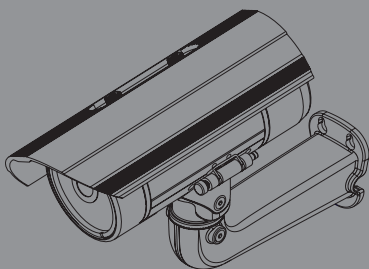


## Quick Install Guide

### Full HD Day & Night Outdoor Network Camera

This document will guide you through the basic installation process for your new D-Link Network Camera.

**DCS-7413**



---

# Installation

This installation guide provides basic instructions for installing the DCS-7413 Network Camera on your network. For additional information about how to use the camera, please see the User Manual which is available on the CD included in this package or from the D-Link website.

## Package Contents

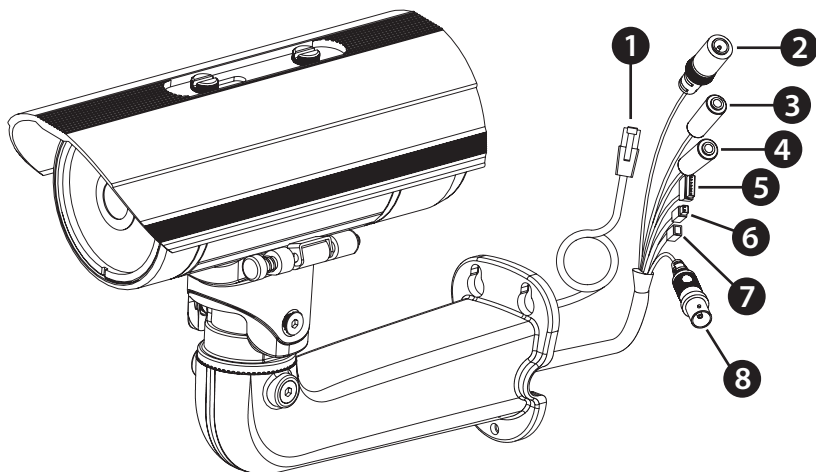
- DCS-7413 Network Camera
- Mounting Bracket and Screws
- CAT5 Ethernet Cable
- Power Adapter
- AV and Power Cables
- Extension Adapter
- Quick Install Guide
- User Manual and Software on CD-ROM

If any of the above items are missing, please contact your reseller.

### **Safety Notice:**

Installation and servicing should be done by certified technicians so as to conform to all local codes and prevent voiding your warranty.

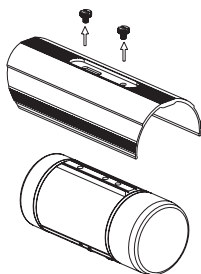
## Hardware Overview



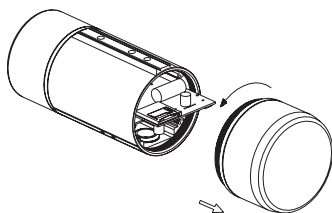
1	Ethernet Jack	Connect to a router or switch. Also used to power the camera using Power over Ethernet (PoE).
2	Power Connector	Connects to a 12V DC power adapter.
3	Audio Out	Connect to external speakers.
4	Audio In	Connect to a microphone.
5	DI/DO Connector	DI/DO connector provide a physical interface to send and receive digital signals to and from a variety of external devices.
6	24V Power Connector	Connect to a 24V AC power source.
7	Reset Button	Press and hold to reset the camera to the factory default settings.
8	BNC Connector (video out)	Connect to an analog video input.

## SD Card Installation

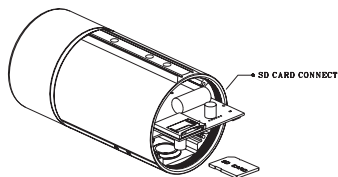
- 1** Loosen the two screws and lift off the adjustable sun shield.



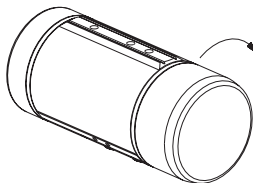
- 2** Remove the base of the camera by holding the camera firmly and rotating the base in a counter-clockwise direction.



- 3** Insert your SD card into the camera with the gold contacts oriented towards the base of the camera. To eject the SD card, push the SD card into the slot.



- 4** Replace the base of the camera by holding the camera firmly and rotating the base in a clockwise direction ensuring a tight fit.



**Note:** Ensure that the weatherproof seals are secured firmly in place. Attach the sun shield and tighten the two screws.

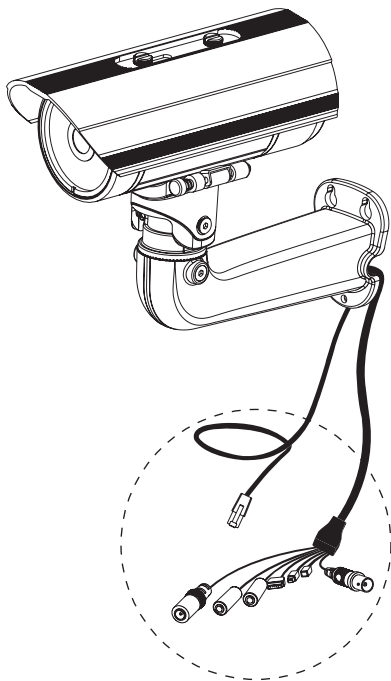
**Note:** If you fully extend the top shield, it may be visible in the camera view in the top left and right corners of your video. It is recommended that you always check your camera's video whenever you reposition the camera or adjust the weather shield to ensure that your camera has the best possible view.

## Mounting the Camera

Please refer to the User Manual (Section 2 - Assembly and Installation) for detailed instructions regarding mounting of the camera using a mounting bracket.

**Note:** To prevent the camera's wire connectors from being damaged by water or other elements:

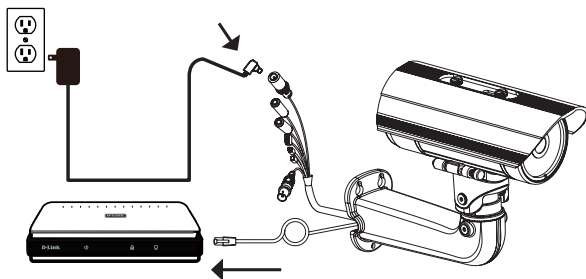
1. When connecting the camera, the unsheathed part of the wire connectors must either be sealed or enclosed in a junction box.
2. The unsheathed part of the wire connectors should be positioned at a downward-facing angle when they extend out of the rear of the camera, not upward.



The unsheathed part of the wire connectors must either be sealed or enclosed in a junction box.

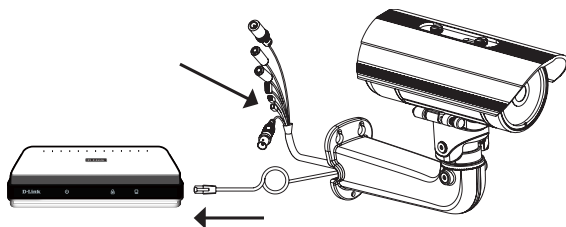
### General Connection Using 12V DC Power Adapter

1. Connect the network camera to a switch via an Ethernet cable.
2. Connect the supplied power cable from the camera to a power outlet.



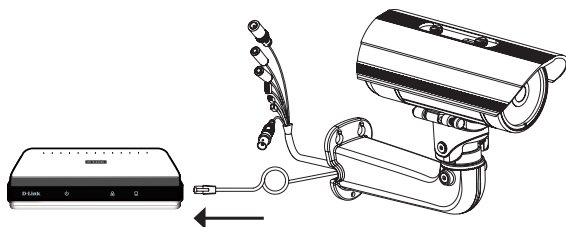
### General Connection Using 24V AC Power Wiring

1. Connect the network camera to a switch via an Ethernet cable.
2. Connect the supplied power cable from the camera to a power source such as your building's emergency power.



### Connection with a PoE Switch

If you are using a PoE switch, connect the IP camera to the switch via an Ethernet cable, which will provide transmission of both power and data over a single cable.



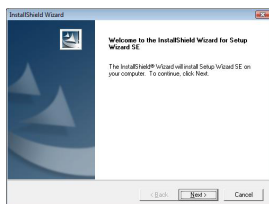
# Configuration with Wizard

Insert the DCS-7413 CD into your computer's CD-ROM drive to begin the installation. If the Autorun function on your computer is disabled, or if the D-Link Launcher fails to start automatically, click **Start > Run**. Type **D:\autorun.exe**, where D: represents the drive letter of your CD-ROM drive.

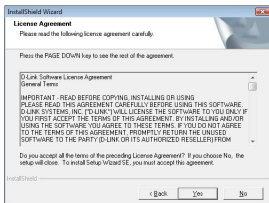
Click **Setup Wizard** to begin the installation.



After clicking Setup Wizard, the following window will open. Click **Next** to continue.

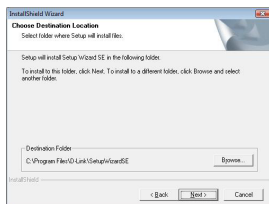


Click **Yes** to accept the License Agreement.

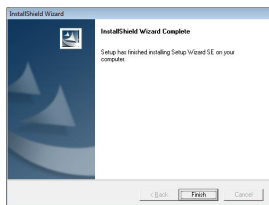


To start the installation process, click **Next**.

**Note:** The installation may take several minutes to finish.

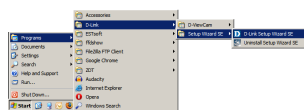


Click **Finish** to complete the installation.



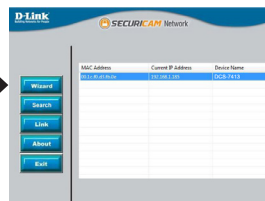
Click on the **D-Link Setup Wizard SE** icon that was created in your Windows Start menu.

**Start > D-Link > Setup Wizard SE**



The Setup Wizard will appear and display the MAC address and IP address of your camera(s). If you have a DHCP server on your network, a valid IP Address will be displayed. If your network does not use a DHCP server, the network camera's default static IP **192.168.0.20** will be displayed.

Click the **Wizard** button to continue.



Enter the Admin ID and password. When logging in for the first time, the default Admin ID is **admin** with the password left blank.

Click **Next** to continue.

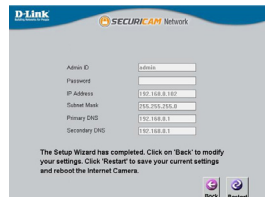


Select **DHCP** if your camera obtains an IP address automatically when it boots up. Select **Static IP** if the camera will use the same IP address each time it is started.

Click **Next** to continue.



Take a moment to confirm your settings and click **Restart**.

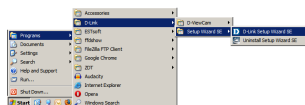




# Viewing Camera via Web Browser

Click on the **D-Link Setup Wizard SE** icon that was created in your Windows Start menu.

**Start > D-Link > Setup Wizard SE**



Select the camera and click the button labeled **"Link"** to access the web configuration.

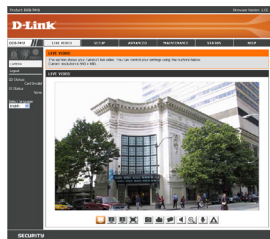
The Setup Wizard will automatically open your web browser to the IP address of the camera.



Enter **admin** as the default username and leave the password blank. Click **OK** to continue.



This section shows your camera's live video. You can select your video profile and view or operate the camera. For additional information about web configuration, please refer to the user manual included on the CD-ROM or the D-Link website.



---

## Notes

---

## Notes

---

# Technical Support

D-Link's website contains the latest user documentation and software updates for D-Link products.

U.S. and Canadian customers can contact D-Link Technical Support through our website or by phone.

## United States

### Telephone

(877) 354-6555

### World Wide Web

<http://support.dlink.com>

## Canada

### Telephone

(877) 354-6560

### World Wide Web

<http://support.dlink.ca>



Version 2.0  
October 18, 2013

©2013 D-Link Corporation/D-Link Systems, Inc. All rights reserved. D-Link and the D-Link logo are registered trademarks of D-Link Corporation or its subsidiaries in the United States and/or other countries. Other trademarks or registered trademarks are the property of their respective owners. Product specifications, size and shape are subject to change without notice, and actual product appearance may differ from that depicted on the package. Visit [dlink.com](http://dlink.com) (US) or [dlink.ca](http://dlink.ca) (Canada) for more details.