



Wi-Fi Baby Camera

Pan & Tilt HD Cloud Camera



DCS-855L

Quick Install Guide

D-Link®

Before you Begin

- Please save this guide for future reference.
- Read these instructions before using your camera.
- Do not manually adjust the angle of the camera.
- Do not cover the ventilation holes.
- Do not cover this product with a blanket.
- Do not allow children to play with this product.
- Do not place this product near water or other liquids, such as near a sink, shower, or bathtub.
- Do not attempt to open or disassemble this product.
- **Cleaning:** You should only clean this camera with a dry cloth. Do not allow the camera to get wet.
- This product is not a replacement for responsible adult supervision.



WARNING - STRANGULATION HAZARD

Children have STRANGLED in cords. Keep adapter cord out of reach of children (minimum of 3 ft or 1 m away). NEVER place the camera or adapter cord inside the crib or child sleeping area. Do not use extension cords. This product is NOT intended to replace proper supervision of children.

Package Contents



DCS-855L Wi-Fi Baby Camera



Additional Accent Rings



Focus Ring Adjustment Tool



Wall Mount Kit



Mounting Bracket



Power Adapter



Quick Install Guide

If any of the above items are missing, please contact your reseller.

Minimum Requirements

Mobile Requirements:

- Refer to the mydlink Baby app page on the App Store and Google Play

Computer Requirements:

- Computer with 1.3GHz processor or above and at least 128 MB RAM
- Microsoft Windows® 8, 7, Vista®, or Mac OS® X (10.6 or higher)
- Internet Explorer® 7, Firefox® 12, Safari® 6, or Chrome™ 20 or higher with Java installed and enabled

Network Requirements:

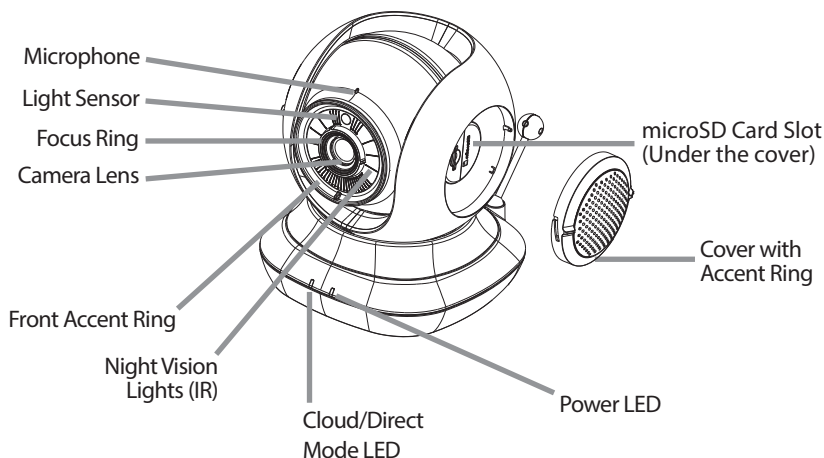
- 802.11g/n Wi-Fi network
(Wireless N network recommended for optimal performance)

Remote Viewing:

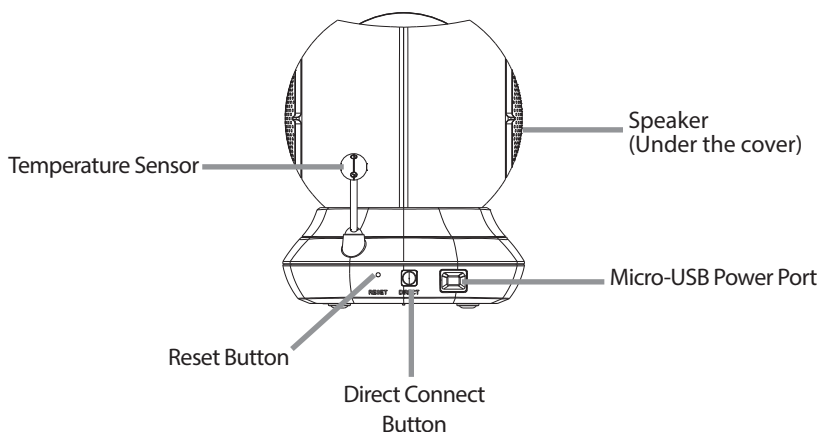
- Internet access required for remote viewing
(Direct Connection requires no Internet connection and no router)

Hardware Overview

Front View



Back View



Camera Setup Options

1. At Home...




Connect to your DCS-855L through your home wireless network.



2. Remotely...



Connect to your DCS-855L using the Internet.

Note: You can also connect directly to your DCS-855L wirelessly, so there is no need for an Internet connection or a router. See the **Advanced Features** section of the User Manual for details. Go to mydlink.com/support to download the DCS-855L User Manual.




Sign in  


Home Product Mobile App Support

FAQ Download Contact Us


Camera Router Storage




DCS-855L



DCS-2136L



DCS-5010L



DCS-5020L

A BABY MONITOR FOR THE MODERN PARENT

Installation



WARNING - STRANGULATION HAZARD

Children have **STRANGLED** in cords. Keep adapter cord out of reach of children (minimum of 3 ft or 1 m away). **NEVER** place the camera or adapter cord inside the crib or child sleeping area. Do not use extension cords. This product is **NOT** intended to replace proper supervision of children.

- 1 Download the free **mydlink Baby Camera Monitor** app on your smartphone or tablet.



mydlink™ Baby

- 2 Once the *mydlink Baby* app is installed, simply tap on the icon to open the app. The first screen you will see is the *Setup Wizard*.



- 3 Tap **Setup** to launch the *Setup Wizard*. The wizard will guide you step-by-step through the configuration process.



Mount the Camera

Please refer to the steps below to assist you with mounting the camera.

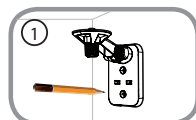


We suggest that you configure the camera before mounting.

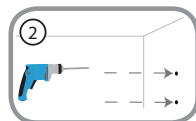


Warning: Indoor use only. Do not mount in a location where it may be in contact with water as it may damage the product and/or cause injury.

- Place the mounting bracket where you want to position the camera and use a pencil to mark the points where you will drill the holes.

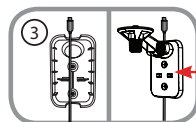


- Use a 6mm drill bit to drill the holes where you marked. The holes should be 25mm deep (about 1 in deep). Insert the screws into the holes.

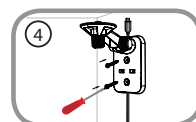


Note: If the wall is made out of concrete, before inserting the screws, insert the provided plastic anchors to support the screws.

- If you prefer, you can conceal the cable behind the mounting bracket. Run the cable through the back of the mounting bracket, securing it with the built-in guides. Make sure you leave enough cable protruding to allow you to connect it to the camera.

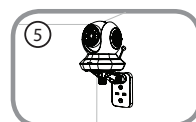


- Fasten the mounting bracket to the wall using the screws provided.

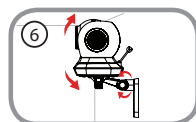


Do not overtighten the screws as this may damage the bracket.

- Using the supplied thumbscrew, fasten the camera to the mounting bracket. Connect the power cable to the camera.



- Adjust the angle of the arm on the mounting bracket as desired. Tighten the thumbscrew to lock the arm into place.



FAQs

1. How do I adjust the focus?

Place the focus ring adjustment tool over the focus ring and rotate until the image is clear.

2. How do I change the accent rings?

Rotate the access ring counterclockwise, then lift it off. Put the new ring on and rotate it clockwise until it clicks into place.

3. How do I select a different lullaby?

Use the mydlink Baby app to change the lullaby. Click on the music icon on the camera's live view screen. Choose a lullaby from the list, or you can select **Play All**.

4. How do I customize the lullabies on my camera?

Visit the support page for your camera on the mydlink.com website for instructions on how to add your own music files to your camera.

5. I started the mydlink Baby Camera Monitor app, but I can't find my camera.

- Make sure your camera is turned on and receiving power.
- If you are setting up a new camera, make sure your smartphone or tablet is connected to the camera's Wi-Fi network (not to your wireless router). This also applies when you enable Direct Connect to use the camera away from home. (See the "Advanced Features" section of the User Manual for details.)
- The Wi-Fi network name should be [myBabyCam-XXXX], where XXXX is a 4-digit code (the last 4 digits of your camera's MAC address).
- The Wi-Fi password is printed on a label on the bottom of your camera.
- You can also find your camera's Wi-Fi network details on a label attached to the back of this Quick Install Guide.
- If you still can't find your camera, reset your camera by pressing its reset button for 10 seconds while your camera is plugged in (see question 7 below).

6. What does it mean when the Power LED is red?

When you power on the camera, the Power LED will be solid red. When you reset the camera, the Power LED will be flashing red.

7. What can I do if I forget my password?

If you forget your password, you must reset the camera. Unfortunately, this process will change all your settings back to factory default. To reset the camera, locate the reset button on the back of the camera. With the camera powered on, use an unfolded paper clip to hold the button down for 10 seconds.

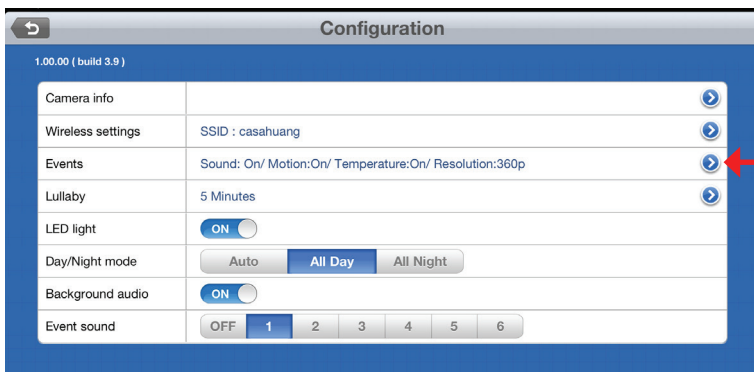


8. Should the app be running constantly on my device?

The app can run in the background, allowing you to hear your baby continuously, even when the phone is locked. The smartphone or tablet can still be used normally while the app is running. If you do not want to hear audio from the camera when the app is open, you can turn off the **Background audio** on the *Configuration* menu. If you close the app, the camera audio will be turned off.

9. How do I adjust the sensitivity of motion and audio detection?

From the *Live View* page, tap on the screen to reveal the icons, and tap the **Configuration** icon (⚙️) to go to *Configuration* menu. Tap the **Events** arrow to access the motion and audio detection settings.



10. How do I activate push notifications?

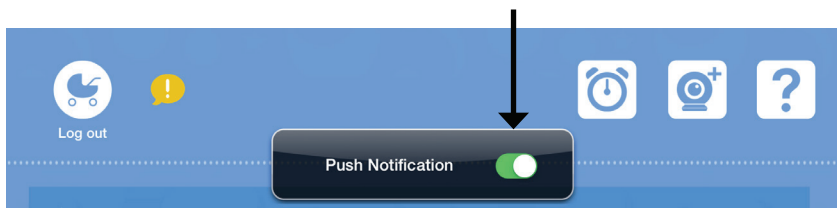
A. Go to the Home page and log in.



B. After logging in, you will notice that the refresh icon on the top right has changed to an alarm clock icon.



C. Tap on the alarm clock icon, and you will see the *Push Notification* setting. Tap on the switch icon to activate push notifications. The switch icon will turn green, and you should begin to receive alerts as specified.



Note: If you do not receive alerts, go to the Configuration menu and adjust the sensitivity level of sound and motion detection as described on the previous page, question 9.

11. Why do I see a white haze when viewing Live Video in night vision mode?

The night vision light on the camera may be reflecting off a nearby surface. Try repositioning and aiming the camera.

Notes

Notes

Notes

Notes

Notes

Technical Support

This guide is only for the first time configuration. Refer to the user manual to learn more, or visit <http://support.dlink.com> (USA) or <http://support.dlink.ca> (Canada). Also feel free to contact us through our website.

USA



<http://support.dlink.com>

Canada



<http://support.dlink.ca>

Camera Wi-Fi Network Details:

**Your Camera
Password:**

D-Link[®]

Version 1.10(US)_90x130

December 18, 2014

6DCS855LQN02G

©2014 All rights reserved. D-Link and the D-Link logo are trademarks or registered trademarks of D-Link. All other third-party marks mentioned herein may be trademarks of their respective owners. Maximum wireless signal rate derived from IEEE Standard 802.11g and 802.11n specifications. Actual data throughput will vary. Network conditions and environmental factors, including volume of network traffic, building materials and construction, and network overhead, lower actual data throughput rate. Environmental conditions will adversely affect wireless signal range. Product specifications, size and shape are subject to change without notice, and actual product appearance may differ from that depicted on the packaging. Visit dlink.com (USA) or dlink.ca (Canada) for more details.
