



DCS-931L



Cloud Camera 1050
Wireless N Network Camera

Quick Install Guide

D-Link®

Package Contents



DCS-931L Cloud Camera 1050



Power Adapter



CAT5 Ethernet Cable



Quick Install Guide

If any of the above items are missing, please contact your reseller.

Minimum Requirements

Computer with:

- PC with 1.3GHz or above and at least 128MB RAM
- Windows® 8, Windows® 7, Vista® or XP (32-bit or 64-bit)
- Mac OS® X 10.6 or higher

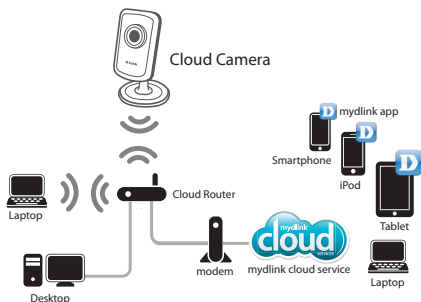
Web Browser

- Internet Explorer® 7, Firefox, Safari 4, or Chrome
- Installed and enabled Java and ActiveX® controls

Network Device and Service

- A router (D-Link Cloud Router is recommended)
- An Internet connection
- An e-mail account (Required to register mydlink service)

What is the mydlink™ Service?



With a mydlink service enabled camera, you can stay connected to everything you love from anywhere, anytime. The mydlink service can be accessed by a web browser and also provides an optional downloadable mydlink app that allows users to have a better experience on their mobile devices. With the mydlink app, you can quickly and easily view your camera feed from anywhere using a Wi-Fi, 3G or 4G connection.

via Smartphone - mydlink Lite App (Free)

Search for the words “mydlink lite” to download and install the app on your smartphone or tablet when connected to the Internet. You can also find the app by scanning the QR code below with a QR code scan app.



Available on the
App Store



ANDROID APP ON
Google play



System Requirements: iOS version 4.3 or above. Android version 2.1 or above.

via Tablet - mydlink+ App (Paid)

Search for the word “mydlink+” to download and install the app on your tablet when connected to the Internet. You can also find the app by scanning the QR code below with a QR code scan app.



Available on the
App Store



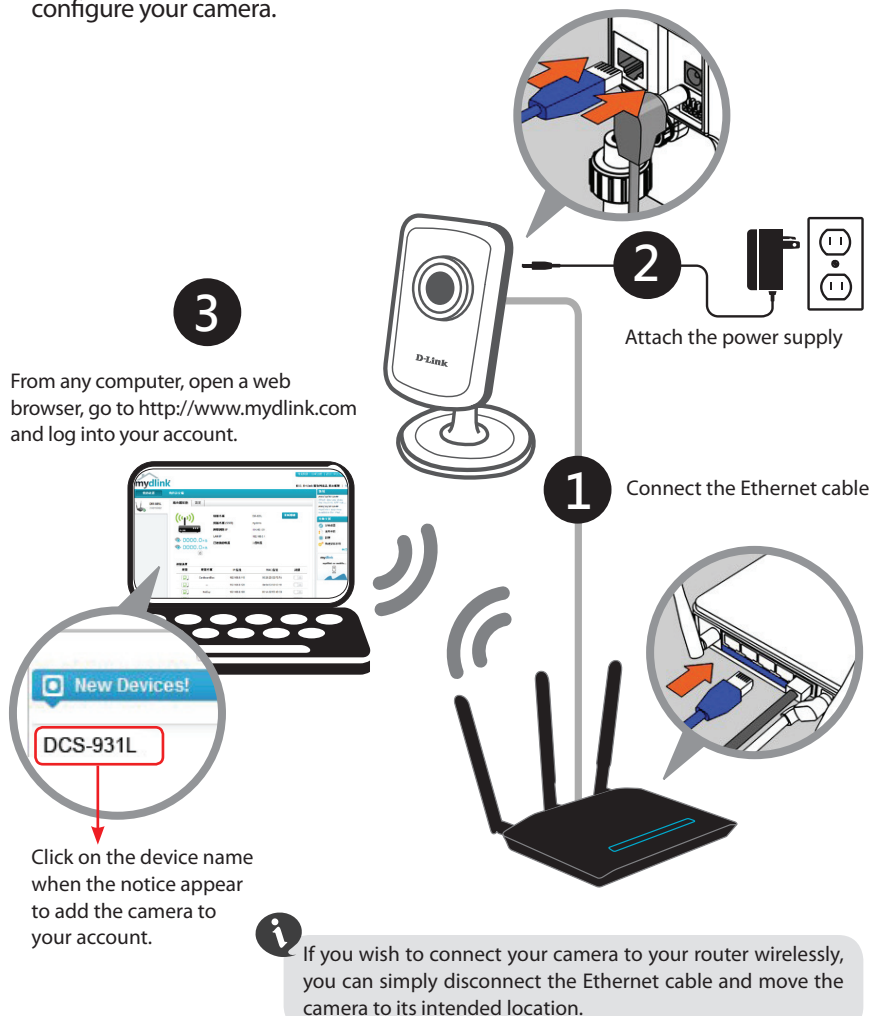
ANDROID APP ON
Google play



System Requirements: iOS version 4.3 or above. Android version 2.1 or above.

Zero Configuration Setup

If you have a D-Link Cloud Router with an Internet connection, you can take advantage of Zero Configuration. This feature automatically configures your camera's settings for you and adds it to your mydlink account automatically. If you do not have a D-Link Cloud router, refer to the next page to install and configure your camera.



Setup Wizard

If you do not have a D-Link Cloud Router, you can use any Windows or Mac computer to go through the Setup Wizard, which will guide you through the installation process from connecting your hardware to configuring your camera.

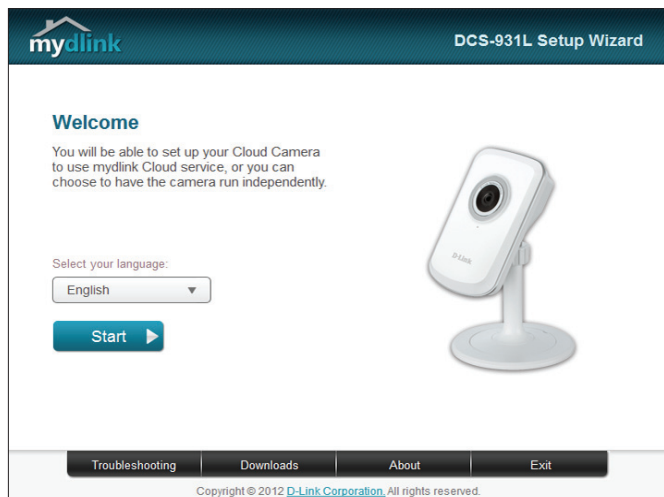


Please download the Setup Wizard from <http://www.mydlink.com/support>.

Windows Users - Extract ("unzip") the files to a folder on your computer and then double-click the **SETUP_WIZARD.exe** file in the **Advanced** folder.

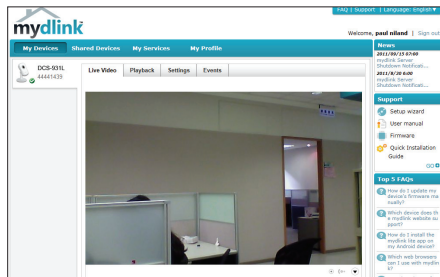
Mac Users - Download the Mac OS Setup Utility. Open the **SetupWizard** file and launch the application.

After about 20-30 seconds, the Setup Wizard will open, which will guide you step-by-step through the installation process from connecting your hardware to configuring your camera and registering it with your mydlink account.



Start mydlink

- 1 Open a web browser on any computer connected to the Internet.
- 2 Enter <http://www.mylink.com> in the address bar and press **Enter**.
- 3 Sign in with your mydlink account registered in the Setup Wizard.



Browser Requirements:

Java

Active X



- Windows does not have Java installed by default. Please download it from <http://www.java.com>.
- In Mac OS X 10.7.x, Java applets are disabled by default. Click the **Finder > Applications > Utilities > Java Preferences** and check the **Enable applet plug-in and Web Start applications** option.
- The ActiveX® controls in IE will install automatically if needed. We suggest that you make sure that you have enabled the related options in **Tools > Internet Options > Security > Custom Level**.

Mount the Camera

Please refer to the steps below to assist you with mounting the camera.



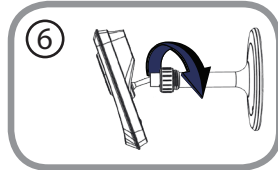
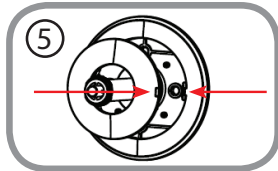
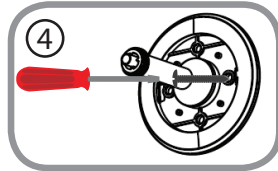
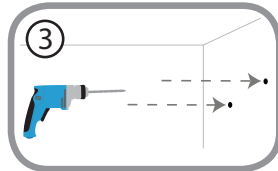
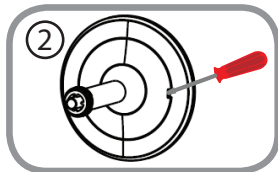
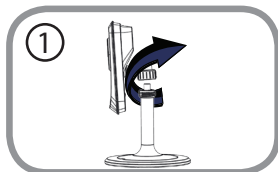
We suggest that you configure the camera before mounting.

1. The camera needs to be removed to expose the holes in the mounting base. Unscrew the camera head from the mounting base by turning counterclockwise.
2. Use a flathead screwdriver to remove the base cover from the mounting base. Place the mounting base where you want to position the camera and use a pencil to mark the holes.
3. Depending on the material of the wall or ceiling, use proper tools to drill two holes or screws where you marked. If the wall is made out of concrete, drill the holes first, then insert the plastic anchors to support the screws.



Do not overtighten the screws as this may crack the mount.

4. Place the mounting base over the holes that are in the wall or ceiling. Make sure to align the mounting base holes with the holes in the wall or ceiling. Use the supplied screws to attach the mounting base to the surface of the wall.
5. Place the base cover on the base. Make sure to align the base cover notch, with the mounting base for future removal. Afterwards, reattach the camera head onto the mounting base.
6. Adjust the angle of the camera as desired, then tighten the collar on the camera stem to lock it in place.

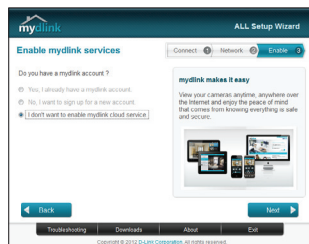


Camera Use Without mydlink Service

You might have some limitations without using the mydlink service:

- Not be able to manage many devices with a single account.
- Need a static IP address or DDNS account to access the camera remotely.
- Need several steps to manually setup remote access to the camera behind a router.
- Not be able to view the image and modify the settings at the same time on mobile devices.

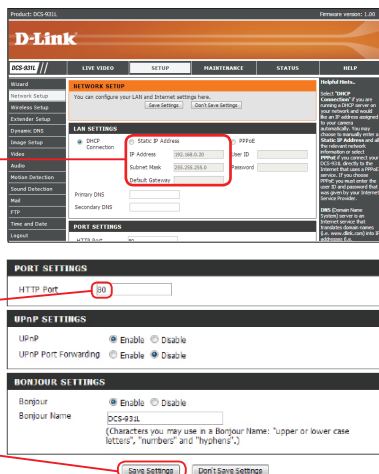
If you do not want to use the mydlink service now, run the Setup Wizard and choose the option "I don't want to enable...". You can run the Setup Wizard again when you want to enable the mydlink service in the future. Check below if your camera behind a router or firewall.



Configuring the camera behind a Router

To log in the camera's setup page, go to **SETUP > Network Setup**, select **"Static IP Address"** and assign an IP address to the camera. The IP address must be in the same subnet mask of the router's LAN IP.

The camera's default IP address is 192.168.0.20.



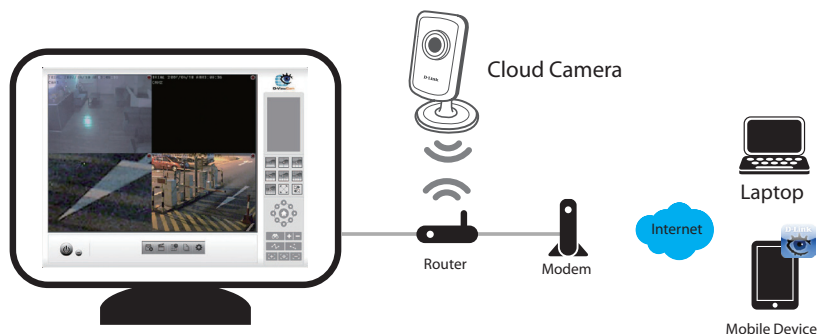
Enter the HTTP (80 by default) service port on this page. Leave the other settings to the default and click "Save Settings" to finish.

Log in the router's setup page and add rules in the Virtual Server or Port Forwarding sections by entering camera's IP address and service ports. Then you can use the router's Internet (WAN) IP address and camera's HTTP port to access the camera remotely.

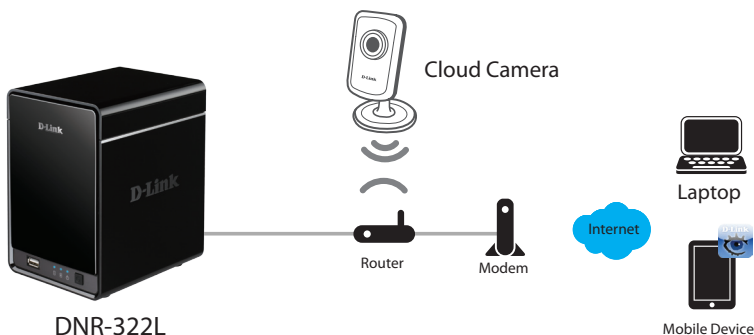
D-ViewCam™ and Network Video Recorders

D-Link provides a software (D-ViewCam) or a hardware (NVRs) solution for advanced users to choose from to manage their cameras and record videos. Depending on the users needs, one or the other solution can be used to supplement their camera system.

D-ViewCam enables centralized management of multiple network cameras, supporting up to 32 network cameras and up to 64 users. With a dedicated computer it offers digital monitoring and recording with a wide array of features, including scheduled, motion and manual recording options for individual needs. Download D-ViewCam at <http://mydlink.com/support>. Select your camera and select “D-ViewCam” under **Wizard**.



Network Video Recorders (NVRs) are standalone storage devices with a powerful embedded system that can record video from up to 9 network cameras located on local or remote sites into a dedicated HDD storage without turning on a PC. Video and camera management can be done as needed using any computer attached to the network.



Notes

Notes

Notes

Notes

Notes

Notes

Technical Support

This guide is only for the first time configuration. Please refer to the user manual to learn more or visit <http://www.mydlink.com> for more information. Also feel free to contact us. U.S. and Canadian customers can contact D-Link Technical Support through our website or by phone.

USA



877-453-5465



<http://support.dlink.com>

Canada



800-361-5265



<http://support.dlink.ca>

D-Link®

Version 1.0
January 17, 2013
6DCS931LQ.01G

Copyright ©2013 All rights reserved. D-Link and the D-Link logo are registered trademarks of D-Link Corporation or its subsidiaries. Other trademarks are the property of their respective owners. Maximum wireless signal rate derived from IEEE Standard 802.11g and 802.11n specifications. Actual data throughput will vary. Network conditions and environmental factors, including volume of network traffic, building materials and construction, and network overhead, lower actual data throughput rate. Environmental factors will adversely affect wireless signal range. Product specifications, size and shape are subject to change without notice, and actual product appearance may differ from that depicted on the packaging. Visit dlink.com (US) or dlink.ca (Canada) for more details.
