



DCS-936L



HD Wi-Fi Camera

Quick Install Guide

D-Link®

Package Contents



DCS-936L HD Wi-Fi Camera



Power Adapter



Mounting Hardware



Quick Install Guide

If any of the above items are missing, please contact your reseller.

Minimum Requirements

Mobile Device (to use mydlink Lite app)

- iPhone, iPad, or Android smartphone or tablet
(Refer to the mobile app's store page to see if your device is compatible)

Network Device and Service

- A wireless router (802.11n/g) with Internet service
- An e-mail account (required to create a mydlink® account)

**For warranty and regulatory information, please visit:
<http://support.dlink.com/warranty.aspx>**

Product Overview

Front



Back



* Supports microSD/SDXC up to 128GB

Setting Up Your Camera

- 1 Download the free mydlink Lite app on your smartphone or tablet by scanning the QR code below, or by searching for **mydlink Lite** in the app store for your device.



System Requirements: Refer to the mydlink Lite app page on Apple App Store, Google Play or Windows Phone Store.

- 2 Before launching the app, make sure your mobile device is connected to the Wi-Fi network (i.e., router) you want to connect the camera to.
- 3 Launch the mydlink Lite app, then create a new account or log in to your existing account. The app will guide you through the rest of the configuration process.

**Need help setting up your camera?
Watch the installation video.**



Visit dlinksetup.com

Note: If you experience issues registering this device with your mydlink account, or if you purchased an open box or resold unit, perform a hard reset by pressing and holding the reset button on the device for 10 seconds while the device is powered on. **If you are returning the device, please perform the hard reset procedure to clear the device of any personal data.**

To ensure your product has the latest security updates and operates at optimal performance, it is recommended you update your product to the latest firmware after installation and to periodically check for new firmware releases. Updates can be found by searching your model name at **<http://support.dlink.com>** or through the mydlink mobile apps for mydlink registered devices.

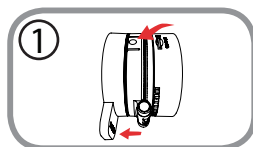
Mount the Camera

Please refer to the steps below to assist you with mounting the camera.

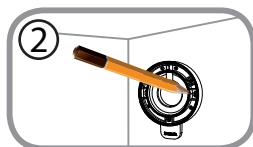


We suggest that you configure the camera before mounting.

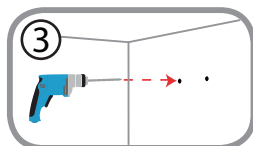
1. Hold the base of the camera with one hand placing your thumb on the tab, then press down on the release buttons with your other hand and pull the camera from the camera base.



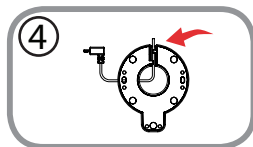
2. Place the camera base where you want to position the camera and use a pencil to mark the holes. Make sure that the cable channel on the camera base is facing in the direction you want.



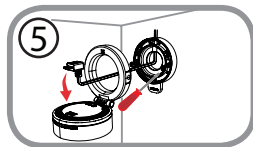
3. Depending on the material of the wall or ceiling, use proper tools to drill two holes 25mm deep with a 6mm drill bit where you marked. If the wall is made out of concrete, drill the holes first, then insert the plastic anchors to support the screws.



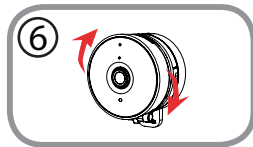
4. Pull the power cable through the middle of the camera base and through the cable channel as shown.



5. Place the camera base over the holes that are in the wall and use the supplied screws to attach the camera base to the surface of the wall. Plug in the microUSB power cable to the camera.



6. Attach the camera to the camera base and pull the power cable to remove the extra cable. Adjust the angle of the camera as desired.



FAQs

1. What is a mydlink No.? What is it used for?

Each camera has a unique eight-digit mydlink No. which will be shown on the label on the back of your camera. This eight-digit number identifies your device, and is required to add your device to your mydlink account.

2. What can I do if my DCS-936L is not working correctly?

- Reset the camera (see next step) and run the setup steps starting on page 4 again.
- To make sure your hardware is installed correctly, make sure that:
 - the power LED is green
 - your Internet connection is working
 - your router's LAN & WAN connections are working
 - your router supports UPnP®
 - your camera is on the same network as your mobile device
 - both your mobile device and camera have a working Internet connection
- If your camera is still not working, check your router and make sure it has the latest firmware.

3. What can I do if I forget my password?

If you forget your password, you must reset the camera. Unfortunately, this process will change your settings back to factory default. To reset the camera, locate the reset button on the back of the camera. With the camera powered on, use an unfolded paper clip to hold the button down for 10 seconds. Run the setup procedure located on page 4 once the camera restarts.



4. Why is there a white haze when viewing in night vision mode?

When viewing in night vision mode, the IR lights on the camera may be reflecting off a nearby surface. Try repositioning the camera in order to avoid glare from IR LEDs.

Notes

Technical Support

This guide is only for initial configuration. Please refer to the user manual and FAQs at <http://support.dlink.com/DCS-936L> for more information. Also feel free to contact us. U.S. and Canadian customers can contact D-Link Technical Support through our website.

USA



<http://support.dlink.com>

Canada



<http://support.dlink.ca>

D-Link®

Version 1.02
March 16, 2017

Copyright ©2017 All rights reserved. D-Link and the D-Link logo are registered trademarks of D-Link Corporation or its subsidiaries. Other trademarks are the property of their respective owners. Maximum wireless signal rate derived from IEEE Standard 802.11n and 802.11g specifications. Actual data throughput will vary. Network conditions and environmental factors, including volume of network traffic, building materials and construction, and network overhead, lower actual data throughput rate. Environmental factors will adversely affect wireless signal range. Product specifications, size and shape are subject to change without notice, and actual product appearance may differ from that depicted on the packaging. Visit dlink.com (US) or dlink.ca (Canada) for more details.
