

## DES-6510



### FEATURES

#### High-performance Switching:

- 2 RJ-21 ports, each support 12 10BASE-T/100BASE-TX ports
- Fully compliant with IEEE802.3 10BASE-T, IEEE802.3u 100BASE-TX
- All 10/100Mbps ports support auto-negotiation
- Back pressure Flow Control support for Half-duplex mode
- IEEE 802.3x compliant Flow Control support for Full-duplex
- All ports support Auto MDI/MDI-X cross over

## Multilayer Switch Module

### 24-Port 10/100Mbps RJ-21 Module

The DES-6510 is a 2 port RJ-21 Telco 50 Module for the D-Link DES-6500 Chassis switch. This module supports up to 24 10BASE-T/100BASE-TX ports and is fully compliant with IEEE 802.3, and 802.3u standards. When combined with the DES-6506 24-port RJ-21 to RJ-45 patch panel, an additional 24 RJ-45 10/100 ports are at your disposal. This space saving module is perfect for those who need additional network support without the overhead of adding multiple blades to your chassis.

The DES-6510 features IEEE 802.3x compliant Flow Control support for Full-duplex, back pressure Flow Control support for Half-Duplex, and full auto-negotiation and auto MDI/MDI-X cross over on all ports. The DES-6510 includes LED light indicators that displays power, port speed, link, and activity.

### Technical Specifications

DES-6510	24-Port 10/100Mbps RJ-21 Module
LEDs	Per unit: Power
	Per Port: Speed, link/activity

### Interface Options

RJ-21	2 RJ-21, each support 12-port 10BASE-T/100BASE-TX ports
-------	---

### Network Protocols and Standards

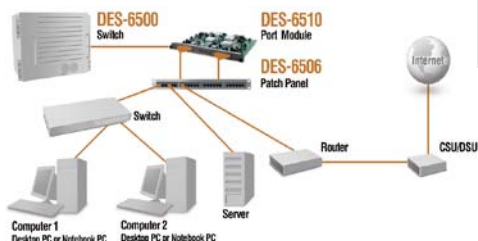
IEEE	IEEE802.3 10BASE-T, IEEE802.3u 100BASE-TX
	IEEE 802.3x compliant Flow Control support for Full-duplex
	Back pressure Flow Control support for Half-duplex mode

### Physical and Environmental

Temperature	Operating 0 to 50°C (32 to 122°F)
	Storage -25 to 55°C (-13 – 131°F)
Humidity	Operating 20% to 80%, non-condensing
	Storage 5% to 95%, non-condensing
Dimensions	330mm x 281mm x 27.5mm
	(12.9in x 11.06in x 1.08in)
A/C Input	90-264vac, 47/63hz
Power Consumption	28watts max
EMI	FCC Class A, CE mark, VCCI, C-Tick

### Order Information

<u>Part Number</u>	<u>Description</u>
DES-6510	24-Port 10/100Mbps RJ-21/Telco 50 Module



D-Link Systems, Inc. 17595 Mt. Herrmann Street Fountain Valley CA 92708 [www.dlink.com](http://www.dlink.com)  
©Copyright D-Link Systems, Inc. 2005. All rights reserved. D-Link® is a registered trademark of D-Link Systems, Inc. Other trademarks or registered trademarks are the property of their respective manufacturers or owners. Visit [www.dlink.com](http://www.dlink.com) for more details.