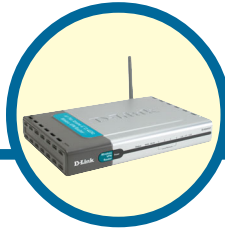


# D-Link Quick Installation Guide

This product can be set up using any current web browser, i.e., Internet Explorer 6 or Netscape Navigator 6.2.3.



**DI-824VUP**  
2.4GHz Wireless VPN  
Broadband Router and  
Print Server

## Before You Begin

1. Thank you for purchasing this router to share your high-speed Internet connection with other computers. For you to share high-speed Internet access, you must have either an Ethernet-based Cable or DSL modem with an established Internet account from an Internet Service Provider (ISP).
2. It's best to use the same computer that is connected to your modem for configuring the DI-824VUP Broadband VPN Router. The DI-824VUP acts as a DHCP server and will assign all the necessary IP address information on your network. **See Appendix at the end of this Quick Installation Guide or the Manual on the CD-ROM for setting each network adapter to automatically obtain an IP address.**

## Check Your Package Contents



**DI-824VUP 2.4GHz Wireless VPN  
Broadband Router and Print Server**



**CD-ROM (containing Manual and Warranty)**



**Ethernet (CAT5 UTP/Straight-Through)  
Cable**



**5V DC Power Adapter**



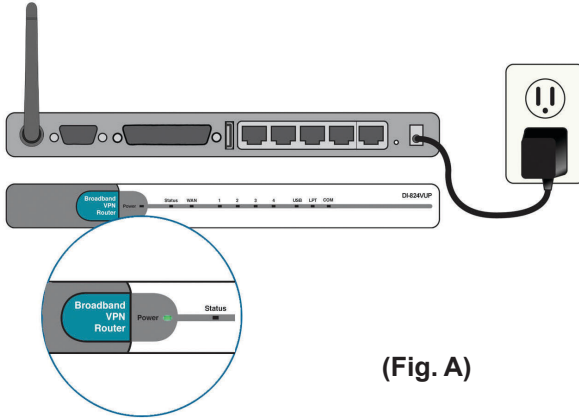
Using a power supply with a different voltage rating will damage and void the warranty of this product.

If any of the above items are missing, please contact your reseller.

# 1

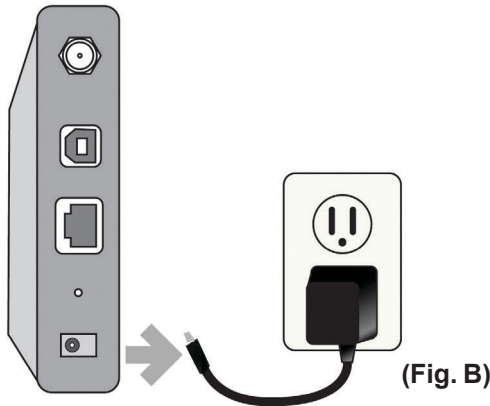
## Connecting The DI-824VUP 2.4GHz Wireless VPN Router To Your Network

- A.** First, connect the power adapter to the **receptor** at the back panel of the DI-824VUP and then plug the other end of the power adapter to a wall outlet or power strip. The Power LED lights up indicating proper operation. (Fig. A)



(Fig. A)

- B.** 1. Power off your Cable or DSL modem; the devices that do not have a on/off switch and will require you to unplug the power adapter. Now, the DI-824VUP should be powered on and the Cable / DSL modem should be turned off. Cable / DSL modem (Power Off) – DI-824VUP (Power On) (Fig.B)



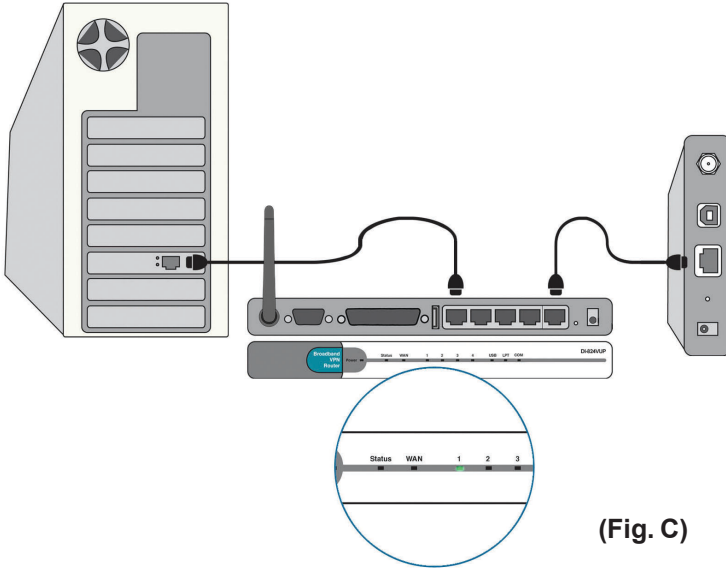
(Fig. B)

2. Connect an Ethernet cable to the Ethernet jack located on the Cable / DSL modem. After the Ethernet cable is securely connected, power on the Cable / DSL modem by turning on the unit or plugging in the power adapter.

Cable / DSL modem (Power On) – DI-824VUP (Power On)

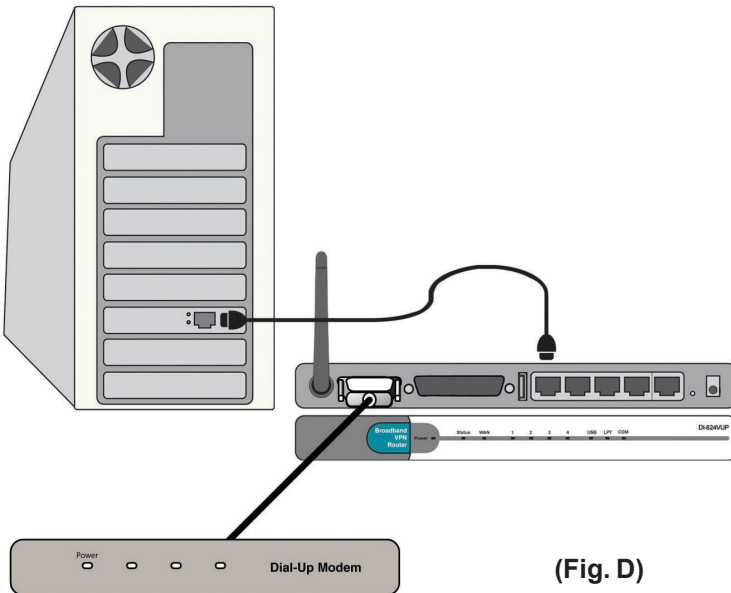
3. Insert the other end of the Ethernet cable to the WAN PORT on the back panel of the DI-824VUP. The WAN LED light will illuminate to indicate proper connection. If the WAN LED is not illuminated, please go back to step B1 and repeat the steps. (Fig.C)

# 1 Continued...



(Fig. C)

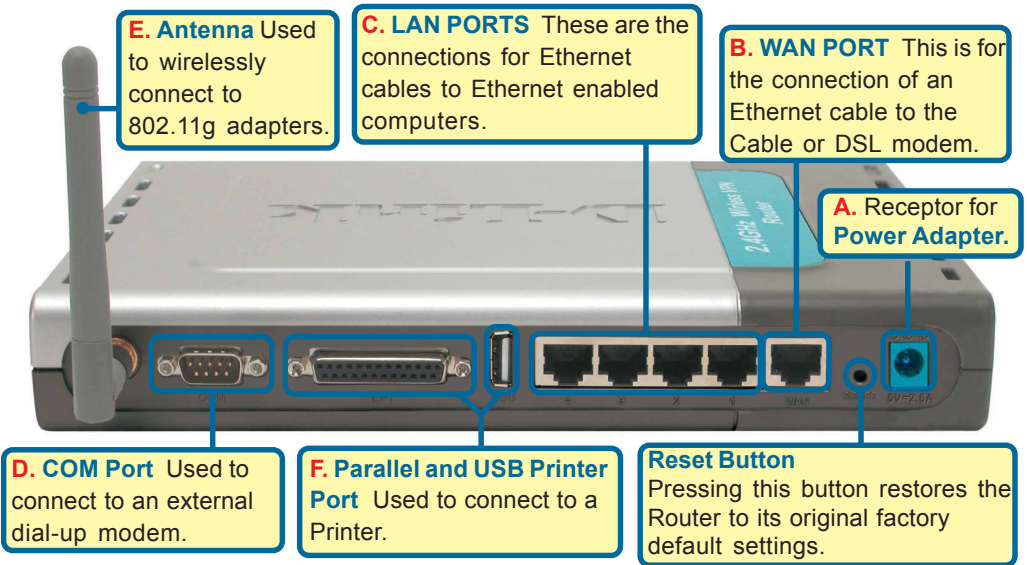
- C. Insert an Ethernet cable to **LAN Port 1** on the back panel of the DI-824VUP and an available Ethernet port on the network adapter in the computer you are using to configure the DI-824VUP. The LED light for LAN Port 1 illuminates to indicate proper connection. (Note: The LAN Ports on the DI-824VUP are Auto-MDI/MDIX. Meaning you can use a straight-through or crossover-Ethernet cable in the LAN Ports.) (Fig.C)
- D. COM Port for dial-up Internet connection (optional). (Fig.D)



(Fig. D)

# 1 Continued...

- E. Computers equipped with 802.11b or 802.11g wireless adapters will be able to connect to the DI-824VUP. The DWL-G650 AirPlus Wireless Cardbus Adapter and the DWL-G520 AirPlus Wireless PCI Adapter will be able to connect out of the box with the router using their default wireless settings.
- F. Connect your Parallel or USB printer here.



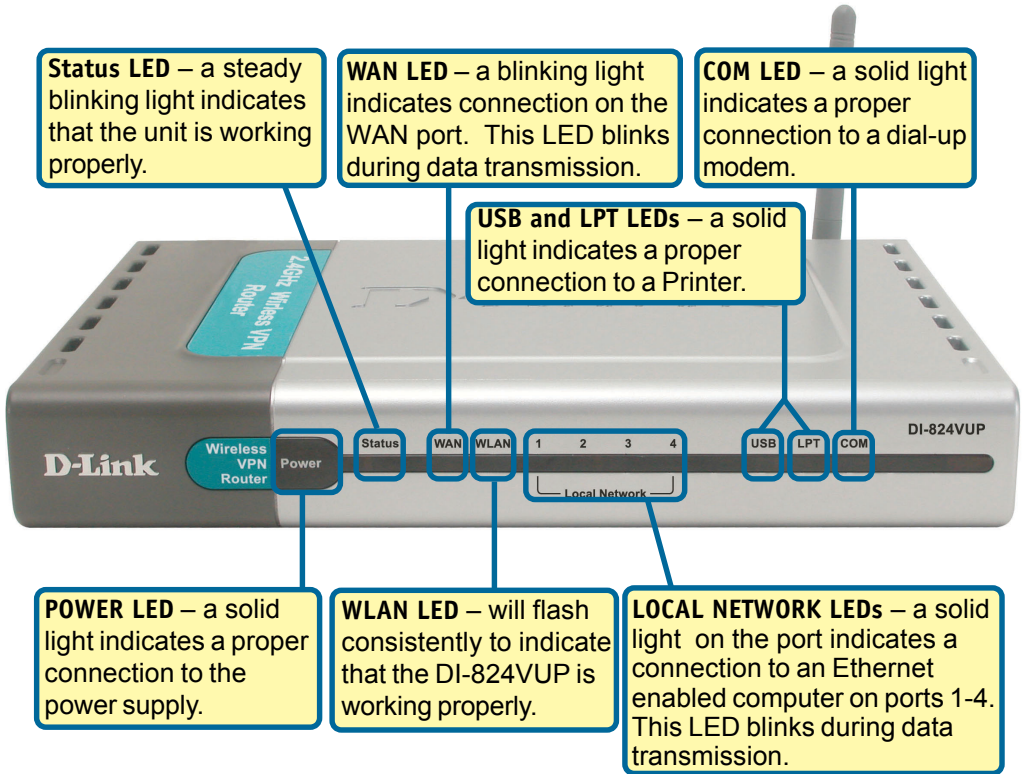
The LAN Ports on the DI-824VUP are Auto MDI/MDIX. Meaning you can use a straight-through or crossover Ethernet cable in the LAN Ports.)

# 2 Restart Your Computer

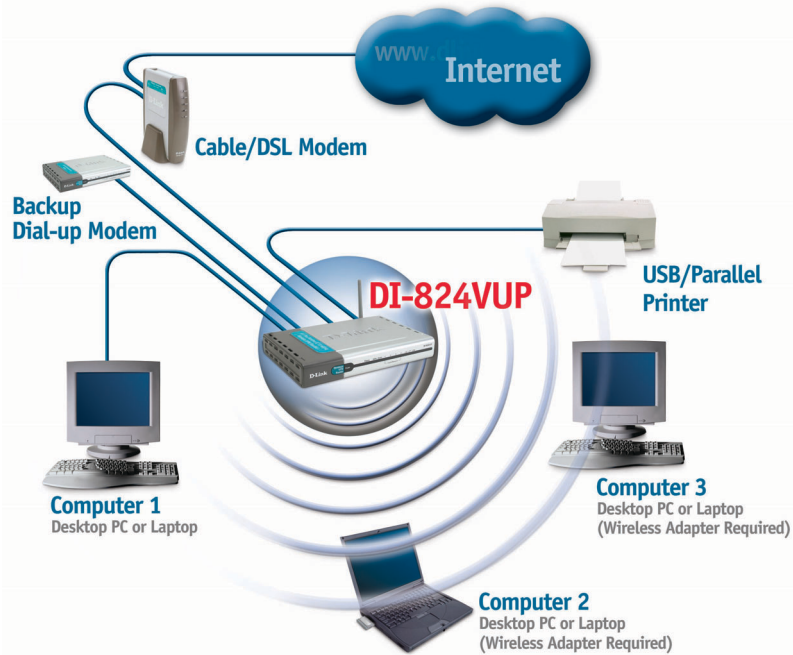
# 3

## Connecting Additional Computers To The DI-824VUP 2.4GHz Wireless VPN Router

Using additional Ethernet (CAT5 UTP) cables, connect your Ethernet-equipped computers to the remaining Ethernet LAN ports on the back panel of the DI-824VUP.

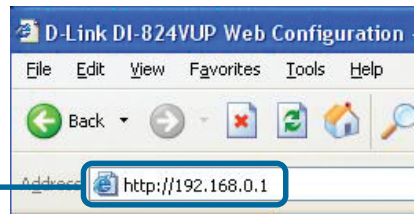


When you have completed the steps in this *Quick Installation Guide*, your connected network should look similar to this:



## 4 Using The Setup Wizard

Open your Web browser and type "**http://192.168.0.1**" into the URL address box. Then press the **Enter** or **Return** key.



The logon pop-up screen will appear.

Type "**admin**" for the username and leave the password field blank.

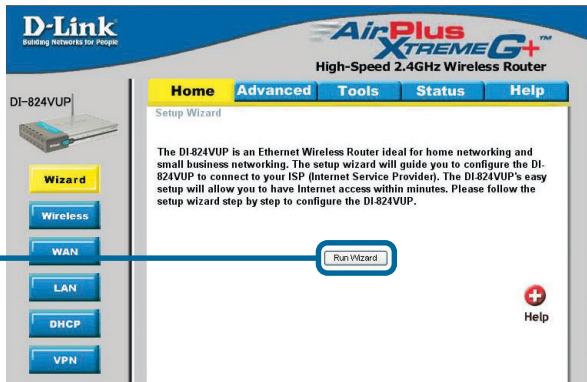


Click **OK**

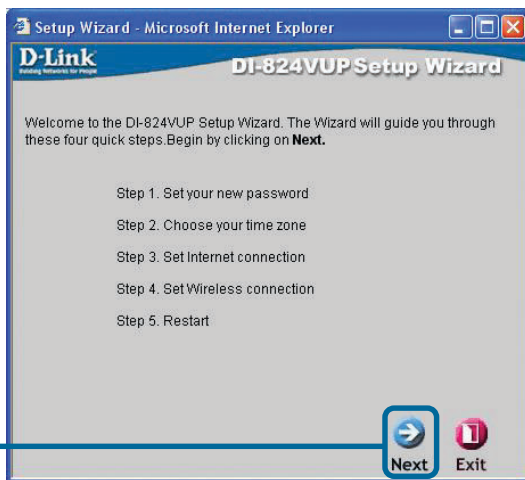
# 4

## The Setup Wizard (continued)

Once you have logged in, the **Home** screen will appear.

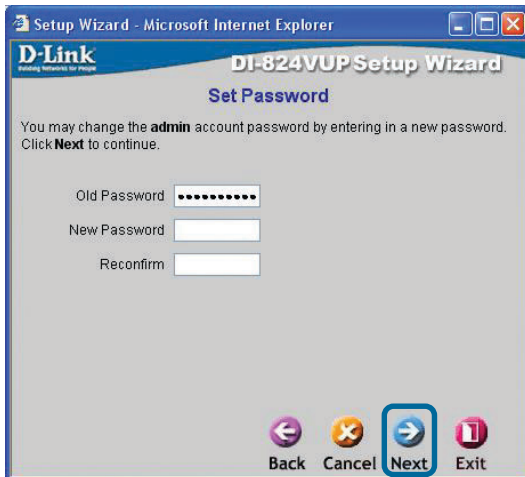


You will see the following screens.



**Set up your new password.**

You have the option to establish a password.

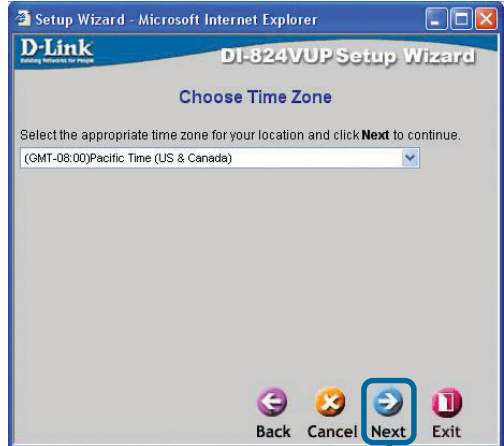




# 4

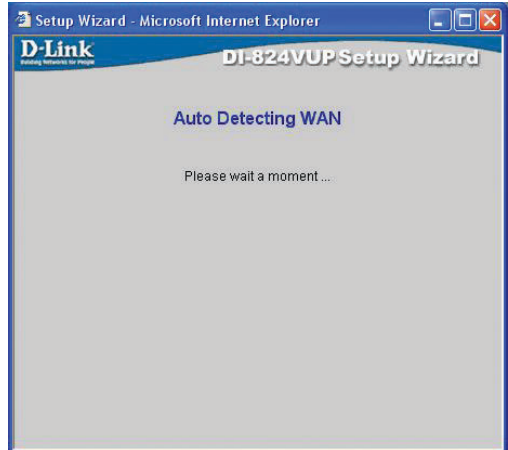
## The Setup Wizard (continued)

Choose your time zone from the drop down list.



Click **Next**

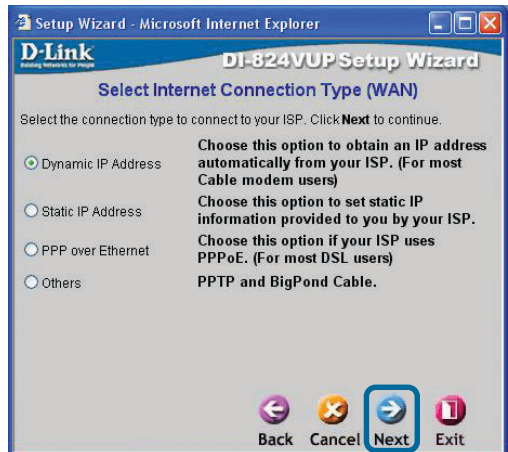
A this point, the setup wizard will try to auto-detect your Internet connection type. If you have a Dynamic or PPPoE connection, you will be brought to the corresponding page.



**Select your Internet Connection.**

You will be prompted to select the type of Internet connection for your router.

**!** If you are unsure of which setting to select, please contact your Internet Service Provider.



Click **Next**




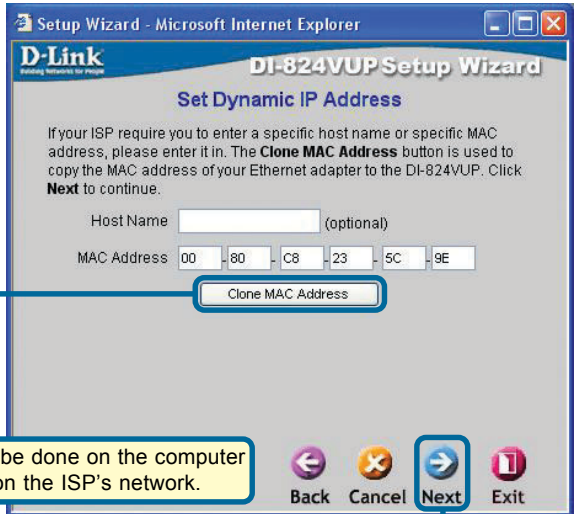
# 4

## The Setup Wizard (continued)

If you selected **Dynamic IP Address**, this screen will appear: (Used mainly for Cable Internet service.)

Click the **“Clone MAC Address”** button to automatically copy the MAC address of the network adapter in your computer. You can also manually type in the MAC address.

 This setup should be done on the computer that is registered on the ISP's network.



Click **Next**

Please continue to **Wireless Setup**.

If your ISP requires a **Static IP Address**, and this option is selected, then this screen will appear:

Enter the IP address information originally provided to you by your ISP. You will need to complete all the required fields.




Click **Next**

Please continue to **Wireless Setup**.

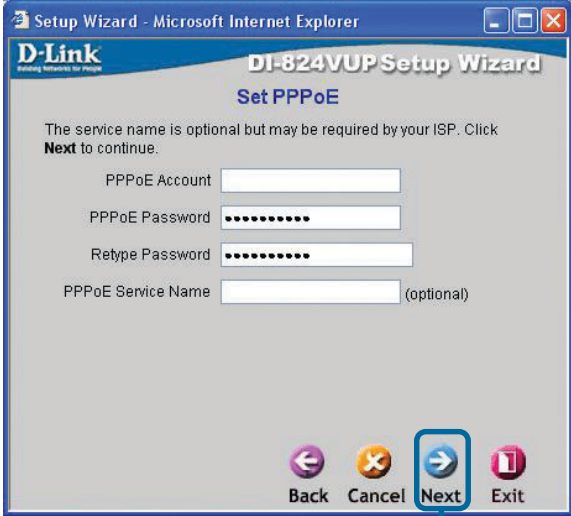
# 4

## The Setup Wizard (continued)

If your ISP uses **PPPoE** (Point-to-Point Protocol over Ethernet), and this option is selected, then this screen will appear: (Used mainly for DSL Internet service.)

 Please be sure to remove any existing PPPoE client software installed on your computers.

Enter in the username and password provided to you by your ISP.



Click **Next**

## Wireless Setup

The default wireless settings for your 802.11g wireless network are:  
SSID = **default**  
Channel = **6**

You can change these settings to match an existing wireless network.

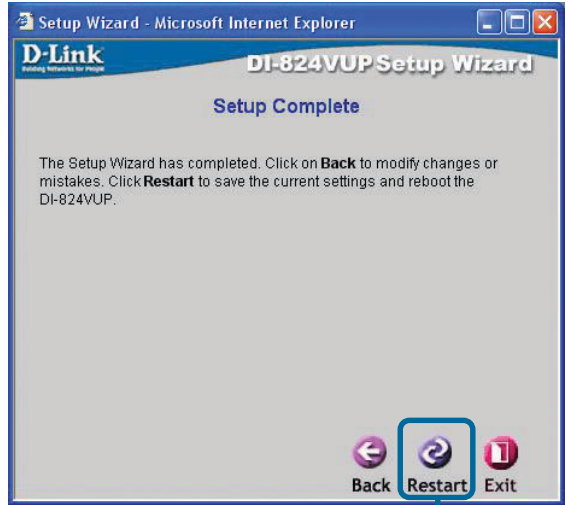
If you wish to use encryption for your 802.11g network, the DI-824VUP is capable of three levels of wireless encryption - 64-bit, 128-bit, and 256-bit. **By default the encryption is disabled.** You can change the encryption settings for more secure wireless communication.



Click **Next**

# 5

## Your Setup is Complete!



Click **Restart**

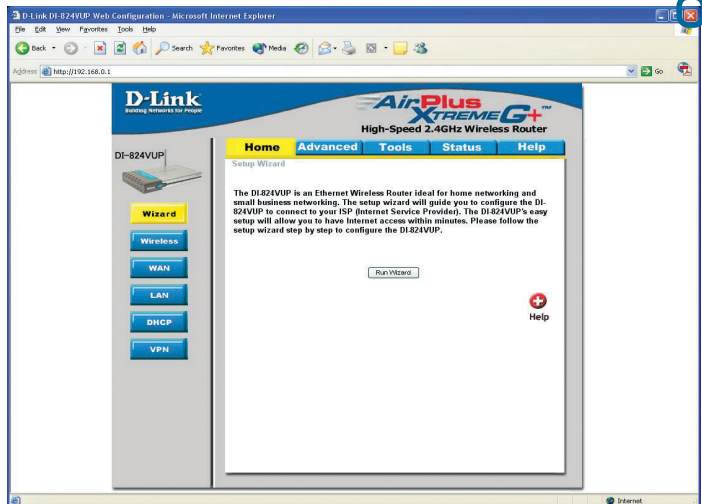
## Test Internet Connection

You will be returned to the **Home** tab.

Click to **Exit**

Then **relaunch** your Web browser (i.e., *Internet Explorer* or *Netscape Navigator*), to link to your favorite Web site to test your Internet connection.

For additional settings or information, refer to the **Advanced**, **Tools**, or **Status** tabs on the web-management interface; or to the Manual located on the CD.



# APPENDIX

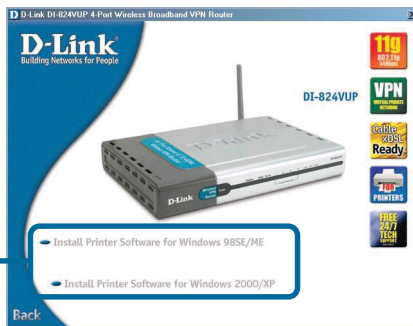
## Installing the Print Server Software

Insert the installation CD-ROM into the CD-ROM drive. The following window will be shown automatically. If it is not, please run "autorun.exe" on the CD-ROM.

Click **Install Print Server Software**

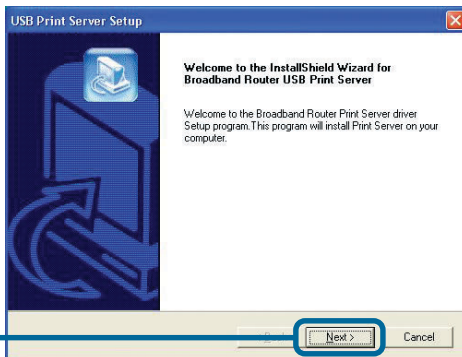


Select your **Windows operating system**



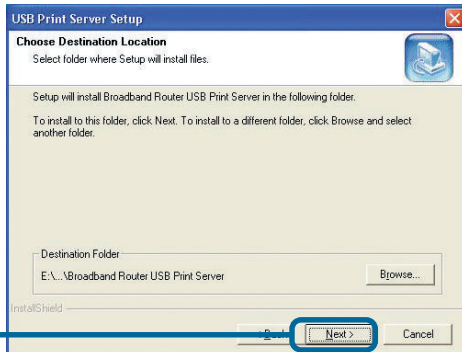
Wait until the following **Welcome** dialog appears.

Click **Next**



Select the destination folder.

Click **Next**

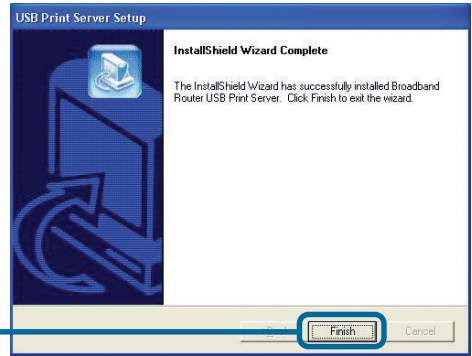


# Installing the Print Server Software (continued)

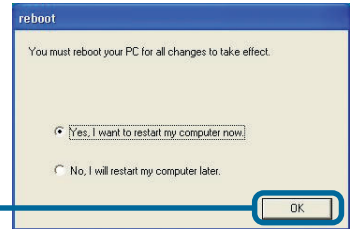
Then, the setup program will begin to install the programs into the destination folder.

When the following window is displayed.

Click **Finish**



Click **OK**



After rebooting your computer, the software installation procedure is finished.

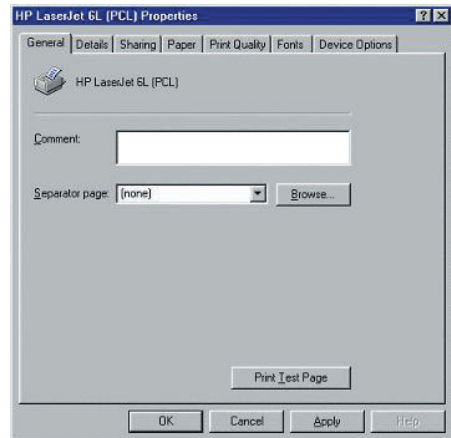
## Configuring on Windows 98se/Me Platforms

After you finish the software installation procedure, your computer will be capable of network printing provided by the DI-824VUP. For convenience, we call the printer connected to the printer port of the DI-824VUP a *printer server*. On a Windows 95/98 platform, open the **Printers** window in the **My Computer** menu.



Now, you can configure the print server of the DI-824VUP:

Find out the corresponding icon of your *printer server*, for example, the **HP LaserJet 6L**. Right click on that icon, and then select **Properties**.

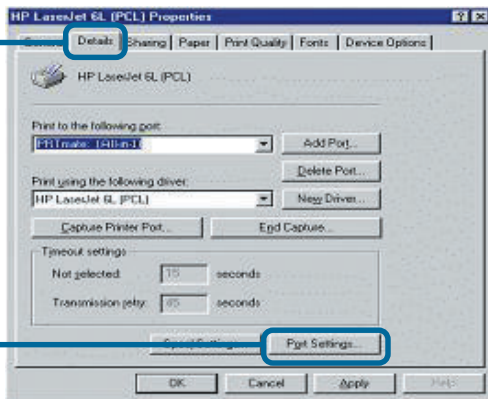


The following screen appears:

# Configuring on Windows 98se/Me Platforms (continued)

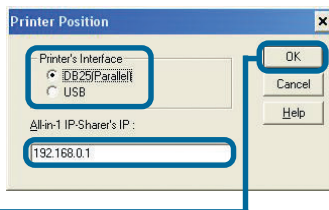
Click on the **Details** tab

Choose the “PRTmate: (All-in-1)” from the list attached at the **Print To** item. Be sure that the **Printer Driver** item is configured to the correct driver of your *printer server*.



Click **Port Settings**

Choose your printer interface.  
Type in the IP address of the DI-824VUP.

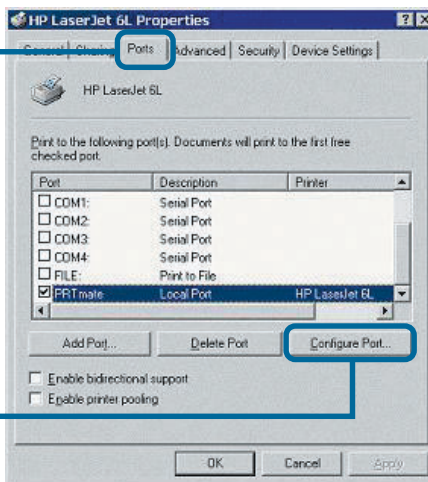


Click **OK**

# Configuring on Windows 2000/XP Platforms

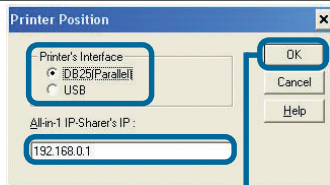
Click **Port**

The configuration procedure for a Windows 2000/XP platform is similar to that of Windows 95/98 except the screen of printer **Properties**:



Click **Configure Port**

Choose your printer interface.  
Type in the IP address of the DI-824VUP.



Click **OK**

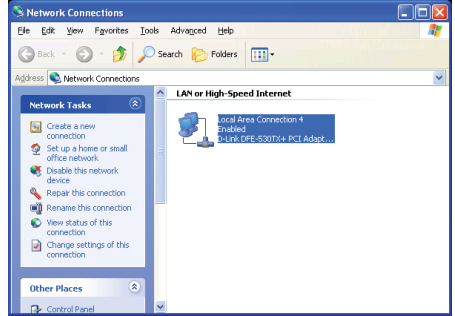
(Note: Screen shots are taken in Windows 2000, similar screens will appear in Windows XP.)



# APPENDIX (continued)

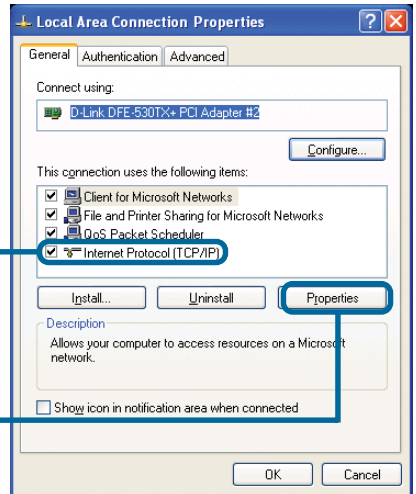
To connect to the network, make sure the network adapter in your computer is configured properly. Here's how to configure the network adapter to obtain an IP address automatically for the DI-824VUP Broadband Router.

For **Microsoft Windows XP**: Go to **Start > right click on My Network Places > select Properties > Right click on the Network Connection** associated with the Ethernet adapter and select **Properties** (i.e., D-Link DFE-530TX+).



Click **Internet Protocol (TCP/IP)**

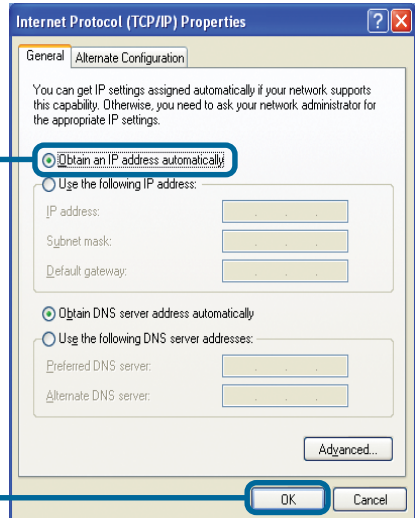
Click **Properties**



Select **Obtain an IP address automatically**

Click **OK**

**Restart** your computer

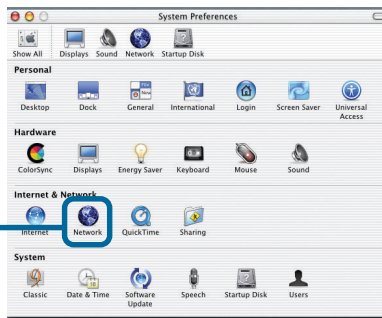




# For Apple Macintosh OS X:

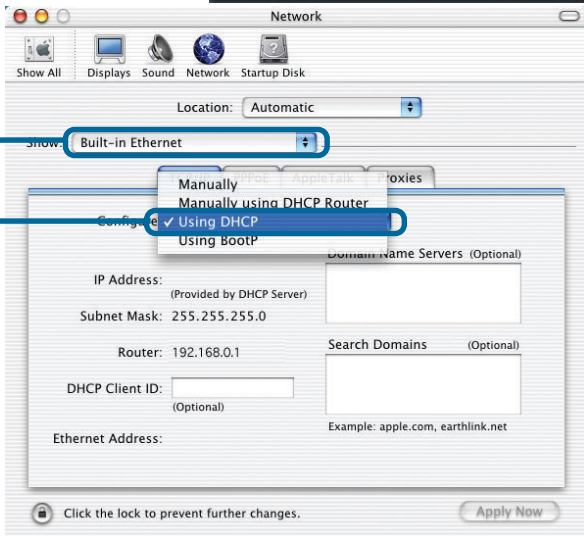
Go to the Apple Menu Click on **System Preferences** and Select **Network**

Click on **Network**



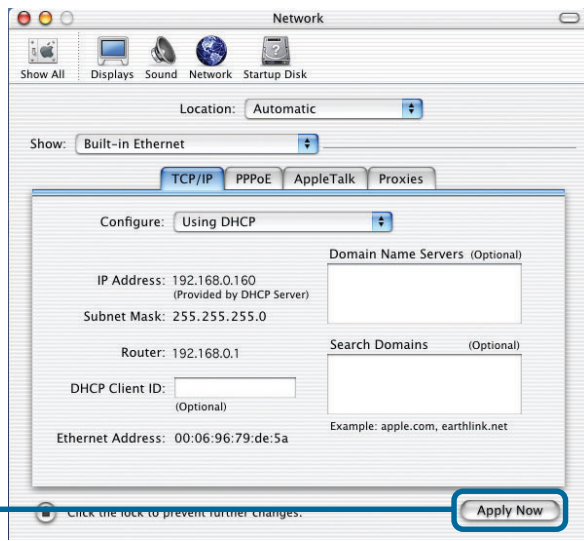
Select **Built-in Ethernet** in the show pull down menu

Select **Using DHCP** in the Configure pull down menu



Click on **Apply Now**

The IP address information, the Subnet Mask, the Router's IP address and the Ethernet adapter address will appear



# Notes

# Technical Support

You can find software updates and user documentation on the D-Link website.

D-Link provides free technical support for customers within the United States and within Canada for the duration of the warranty period on this product.

U.S. and Canadian customers can contact D-Link technical support through our website, or by phone.

## Tech Support for customers within the United States:

### ***D-Link Technical Support over the Telephone:***

(877) 453-5465

24 hours a day, seven days a week.

### ***D-Link Technical Support over the Internet:***

<http://support.dlink.com>

email:[support@dlink.com](mailto:support@dlink.com)

## Tech Support for customers within Canada:

### ***D-Link Technical Support over the Telephone:***

(800) 361-5265

Monday to Friday 8:30am to 9:00pm EST

### ***D-Link Technical Support over the Internet:***

<http://support.dlink.ca>

email:[support@dlink.ca](mailto:support@dlink.ca)

