

## Method One D-Link Wi-Fi Setup

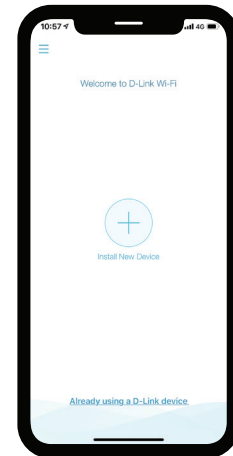
1



Download the **D-Link Wi-Fi** app from the App Store or Google Play.

## D-Link Wi-Fi Setup

2



Open the app and tap **Install New Device**. Scan the Quick Install Card's QR code, or select **DIR-2640** from the router list. Follow the on-screen instructions to complete the set up.

## GPL Code Statement

This D-Link product includes software code developed by third parties, including software code subject to the GNU General Public License ("GPL") or GNU Lesser General Public License ("LGPL"). As applicable, the terms of the GPL and LGPL, and information on obtaining access to the GPL code and LGPL code used in this product, are available to view the full GPL Code Statement at:

<https://tsd.dlink.com.tw/GPL>

The GPL code and LGPL code used in this product is distributed WITHOUT ANY WARRANTY and is subject to the copyrights of one or more authors. For details, see the GPL code and the LGPL code for this product and the terms of the GPL and LGPL.

### Written Offer for GPL and LGPL Source Code

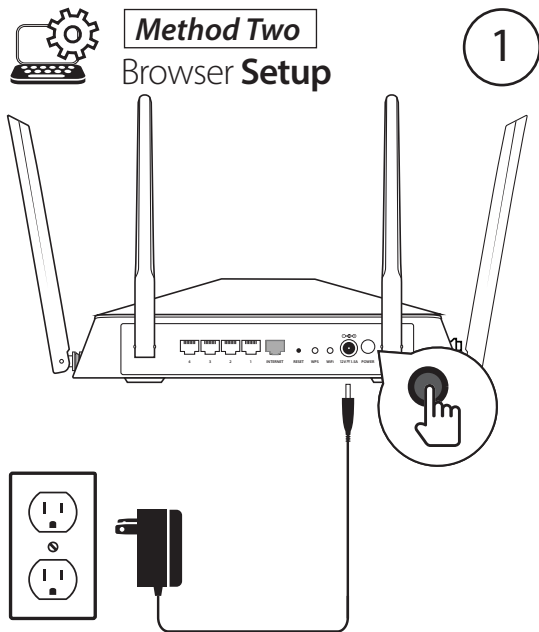
Where such specific license terms entitle you to the source code of such software, D-Link will provide upon written request via email and/or traditional paper mail the applicable GPL and LGPL source code files via CD-ROM for a nominal cost to cover shipping and media charges as allowed under the GPL and LGPL.

Please direct all inquiries to:

**Email:**  
GPLCODE@dlink.com

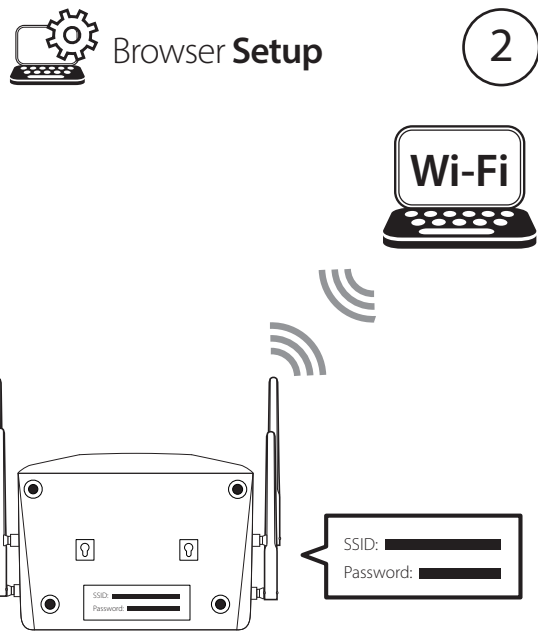
**Snail Mail:**  
Attn: GPLSOURCE REQUEST  
D-Link Systems, Inc.  
14420 Myford Road, Suite 100  
Irvine, CA 92606

# D-Link®

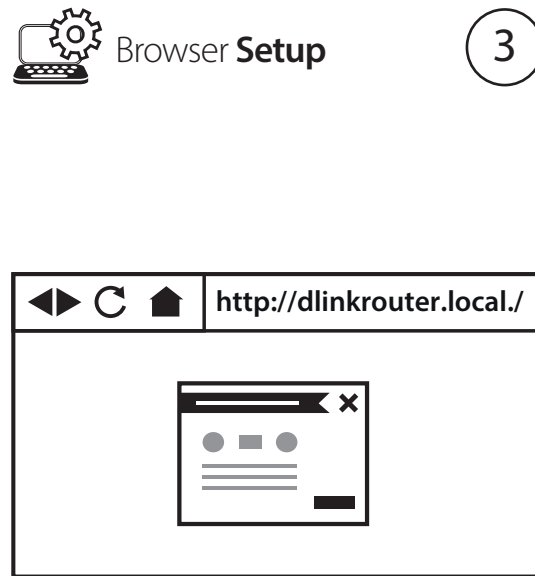


**Note: Browser Setup is only required if you did not install using the D-Link Wi-Fi App.**

Connect the power adapter and plug in the router. If the Power LED does not light up, press the Power Button on the back of the router.



When the Power, 2.4GHz, and 5GHz LEDs are lit solid, connect your computer to the Wi-Fi name (SSID) printed underneath the device, or on the Quick Install Card.



Type **http://dlinkrouter.local./** or **http://192.168.0.1** into a web browser and follow the on-screen instructions to complete the setup.



## Voice Assistants

### Amazon Alexa Setup for D-Link Wi-Fi

<https://www.dlink.com/en/alexa>

### The Google Assistant Setup for D-Link Wi-Fi

<https://www.dlink.com/en/google-assistant>



## Technical Support

Having trouble installing your new product? D-Link's website contains the latest user documentation and software updates for D-Link products. You can also contact D-Link Technical Support through our website, or phone number below.

United States

Internet: <http://support.dlink.com>

Phone: 877-453-5465

**D-Link®**



DIR-2640

Quick Install Guide