

QUICK INSTALL GUIDE

DNS-323

VERSION 1.5



D-Link®

STORAGE

Package Contents

- DNS-323 ShareCenter™ 2-Bay Network Storage
- CD-ROM with Manual and Software
- Quick Installation Guide
- Power Adapter
- Power Cable Clip
- CAT5 Ethernet Cable

Note: *Using a power supply other than the one included with the DNS-323 may cause damage and void the warranty of this product.*

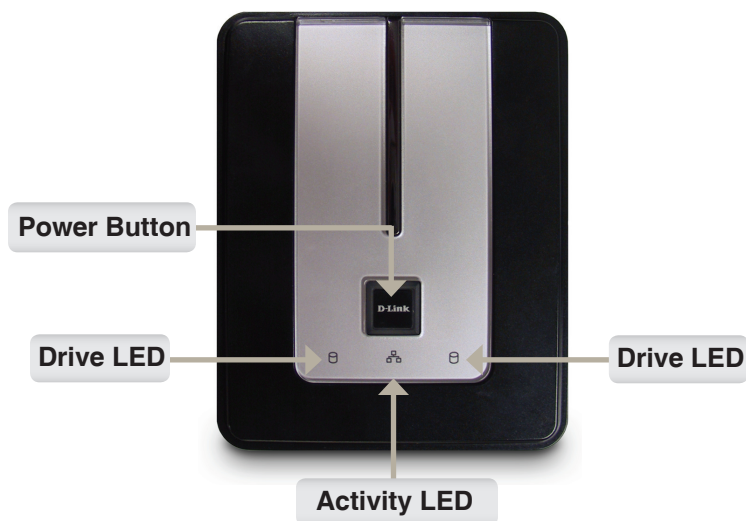
If any of the above items are missing, please contact your reseller.

System Requirements

- 1GHz Processor / 512MB RAM
- 200MB available space
- CD-ROM drive
- Internet Explorer 6.0 or Mozilla Firefox 1.0 and above
- 3.5" Internal SATA Hard Drives
- Windows® 7, Vista®, or XP (Service Pack 2)

Hardware Overview

Front View



Power Button:

Press the button once to power on the DNS-323. Press and hold the button until it begins blinking to power down the device.

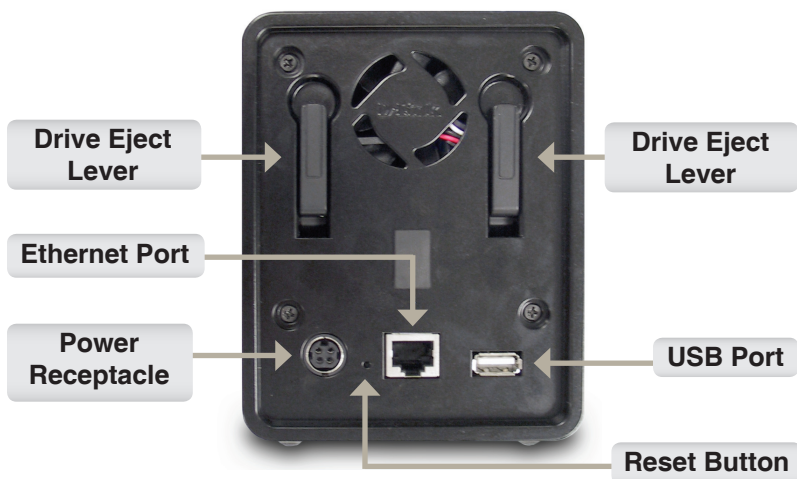
Drive LEDs:

These LEDs will turn a solid BLUE when drives are connected. The LEDs will blink when the drives are being accessed, formatted or synchronized. They will illuminate AMBER if a drive has failed.

Activity LED:

This LED will illuminate solid BLUE when there is an Ethernet connection. It will blink to indicate LAN traffic.

Rear View



Power Receptacle:

The 12V 3A / 5V 3A power supply connects here.

Ethernet Port:

A Gigabit Ethernet port that connects the DNS-323 to the local network.

USB Port:

Connect a printer, or UPS to the port. This USB port also supports D-Link SharePort™ technology. Refer to the SharePort™ manual for more details.

Drive Eject Lever:

Use the levers to eject the SATA hard drives.

Reset Button:

A pinhole button located beside the Ethernet port is used to reset the system to the factory default settings.

Note: After resetting the unit you will still have access to the data on your hard drives.

Hardware Installation

1. Access the drive bays by sliding the faceplate up until it unlatches from the device.



2. Once the faceplate is unlatched, pull it off the device, exposing the drive bays.



3. Insert a 3.5" SATA hard drive into each available drive bay. Make sure to align the drive connectors to the endpoints in the DNS-323. Gently push the drive in until it connects.

Note: If only one 3.5" SATA drive is available place this drive in the LEFT bay with the opening (front) of the DNS-323 facing you.



4. Attach the faceplate to the front of the device.



5. Connect an Ethernet cable into the available Ethernet port. This cable should connect the DNS-323 to your local network or directly to a computer for configuration.



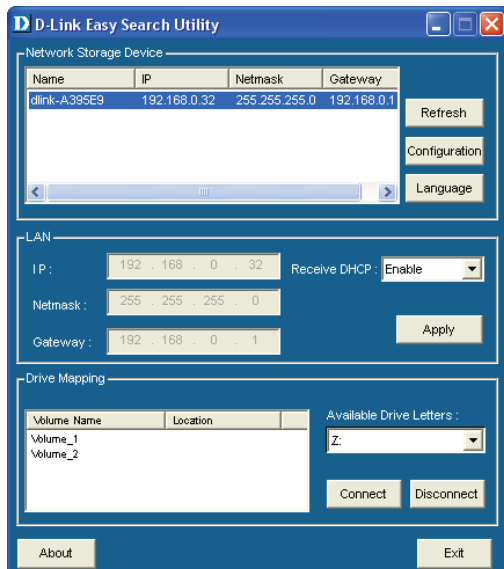
6. Finally, connect the power adapter to the power receptacle.



Easy Search Utility

When first powered on, during the initial boot sequence, the DNS-323 will wait to be assigned an IP address via DHCP. If it does not receive an assigned IP address, by default it will boot up with a self-assigned IP address of 192.168.0.32.

The Easy Search Utility provided on the DNS-323 CD-ROM makes it simple to find any DNS-323 devices in your network. It is recommended to use the Easy Search Utility when accessing and configuring the DNS-323 for the first time. Each DNS-323 will have a unique name of dlink-xxxxxx where 'xxxxxx' is the last six digits of its MAC address.



Note: If you want to use non-English character files, you may need to change the Language setting from the Easy Search Utility to ensure full compatibility with those files. Refer to the user manual for instructions.

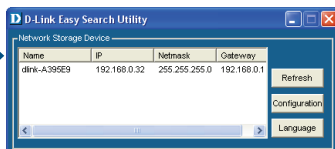
Getting Started

To get started, insert the DNS-323 CD into your CD-ROM drive and click on Easy Search Utility:

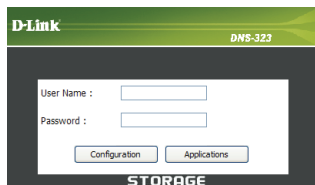
Select **Easy Search Utility**.



Highlight an available DNS-323 and click **Configuration** to access the web-based utility.



At the login screen, type **admin** for the user name and leave the password field blank. Then click **Configuration**.



When logging into the DNS-323 for the first time, you will be asked to choose a drive's configuration type and format the drives. There are four available configuration options, Standard, JBOD, RAID 0 and RAID 1.

Select a configuration type for your hard drive and click **Next**.

D-Link DNS-323

HARD DRIVE CONFIGURATION:

This section allows you to setup a RAID configuration on the selected hard drives. Please note that the data stored on the drives will be erased during the formatting process.

Select a RAID type: ☒ Standard (Individual Disks)
☐ JBOD (Linear - Combines Both Disks)
☐ RAID 0 (Striping - Best Performance)
☐ RAID 1 (Mirroring - Keeps Data Safe)

Vendor	Model	Serial Number	Size
WDC	WD3200AAJS-22VVA	WD-WCARW2381174	320 GB
WDC	WD5000AACS-00ZUB	WD-WCASU1826715	500 GB

Skip Next

A message will appear warning that all data will be erased during formatting. Click **OK** to continue.

Windows Internet Explorer

You are about to re-format the hard drive(s). All data will be erased. Do you wish to continue?

OK Cancel

Select the EXT2 or EXT3 file system on DNS-323. Click **Next** to continue.

D-Link DNS-323

HARD DRIVE CONFIGURATION:

This section allows you to setup a RAID configuration on the selected hard drives. Please note that the data stored on the drives will be erased during the formatting process.

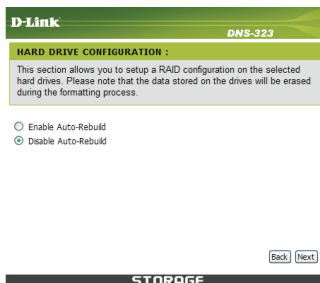
Select file system : EXT 2 (Best Performance) ▼
 EXT 2 (Best Performance)
 EXT 3 (Most Stable)

Back Next

STORAGE

This window appears only when selecting RAID 1 as the configuration type.

Select to enable or disable the auto-rebuild function of RAID 1. Click **Next** to continue.



D-Link DNS-323

HARD DRIVE CONFIGURATION :

This section allows you to setup a RAID configuration on the selected hard drives. Please note that the data stored on the drives will be erased during the formatting process.

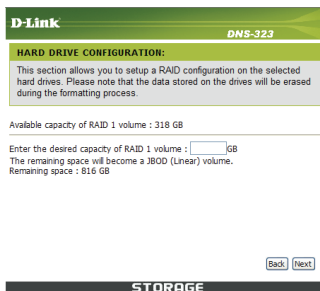
☐ Enable Auto-Rebuild
☒ Disable Auto-Rebuild

Back Next

STORAGE

This window appears when selecting RAID 0 or RAID 1 as the configuration type.

Enter the capacity of the hard drive that you want to reserve for RAID 0 or RAID 1.



D-Link DNS-323

HARD DRIVE CONFIGURATION:

This section allows you to setup a RAID configuration on the selected hard drives. Please note that the data stored on the drives will be erased during the formatting process.

Available capacity of RAID 1 volume : 318 GB

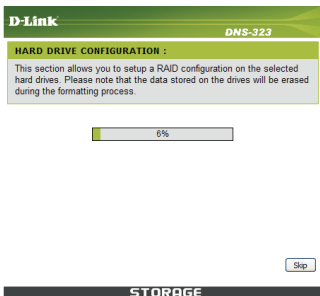
Enter the desired capacity of RAID 1 volume : GB

The remaining space will become a JBOD (Linear) volume.
Remaining space : 816 GB

Back Next

STORAGE

This window will indicate the progress of the disk formatting.



D-Link DNS-323

HARD DRIVE CONFIGURATION :

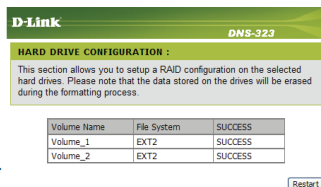
This section allows you to setup a RAID configuration on the selected hard drives. Please note that the data stored on the drives will be erased during the formatting process.

6%

Skip

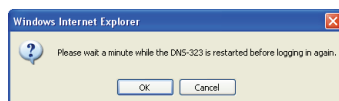
STORAGE

When formatting is complete, the results will display. Click **Restart** to continue.

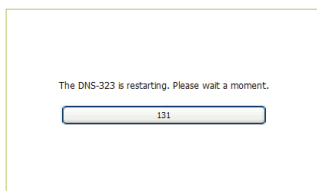


STORAGE

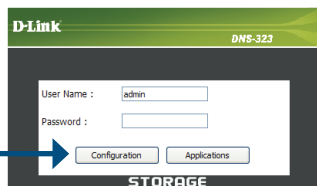
A message informing you that the DNS-323 will restart. Click **OK**.

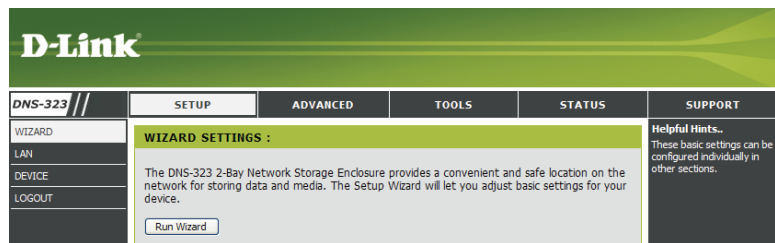


The DNS-323 will restart.



After the DNS-323 restarts, type **admin** for the user name and leave the password field blank. Then click **Configuration**.





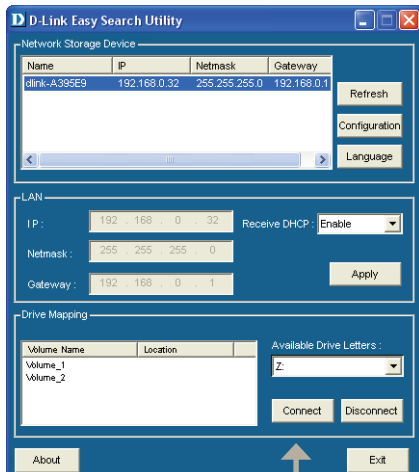
Your DNS-323 setup is now complete.

Mapping a Drive

The Easy Search Utility makes it simple to map drives to your computer. To get started, insert the DNS-323 CD into your CD-ROM and launch the Easy Search Utility.

Select an available DNS-323.

All available volumes will be displayed under **Drive Mapping**. Highlight the drive you want to map to your computer.

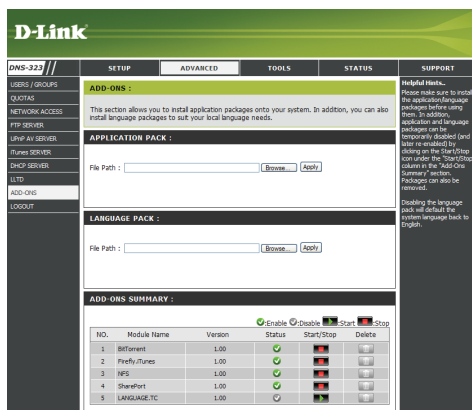


Select an available drive letter from the drop-down menu and click **Connect**.

Once connected, your mapped drive(s) will appear in **My Computer** as network drives.

Add-ons

Install application and language packs to further enhance the functionality of the DNS-323. Users can customize the interface and usability of this unit. Adding features to the unit now only requires an Add-on installation as soon as new features are available.



Application Pack

Click the **Browse** button to search for the specific application pack you want to install. After selecting the application pack, click the **Apply** button to install it.

Language Pack

Click the **Browse** button to search for the specific language pack you want to install. After selecting the language pack, click the **Apply** button to install it.

Add-ons Summary

This section displays the application/language pack(s) you have installed. Under the Status column, you can see if a specific pack is currently (enabled), or (disabled). Under the Start/Stop column, click the to enable the specified pack. Click the to disable the specified pack. Under the Delete column, click the to uninstall the specified pack.

Notes

Technical Support

D-Link's website contains the latest user documentation and software updates for D-Link products.

U.S. and Canadian customers can contact D-Link Technical Support through our website or by phone.

United States

Telephone

(877) 453-5465

World Wide Web

<http://support.dlink.com>

Canada

Telephone

(800) 361-5265

World Wide Web

<http://support.dlink.ca>



Version 1.5
6DNS323Q..06G
December 9, 2009

Copyright © 2008 D-Link Corporation/D-Link Systems, Inc. All rights reserved. D-Link and the D-Link logo are registered trademarks of D-Link Corporation or its subsidiaries in the United States and other countries. Other trademarks are the property of their respective owners. Product specifications, size and shape are subject to change without notice, and actual product appearance may differ from that depicted on the packaging. Visit www.dlink.com for more details.