

QUICK INSTALL GUIDE

DNS-343

VERSION 1.4



D-Link[®]

STORAGE

Package Contents

- D-Link DNS-343 ShareCenter™ 4-Bay Network Storage
- CD-ROM with Manual and Software
- Quick Installation Guide
- Power Adapter (19V / 7.89A)
- Power Cord
- CAT5 Ethernet Cable

Note: *Using a power supply with a different voltage than the one included with the DNS-343 will cause damage and void the warranty for this product.*

If any of the above items are missing, please contact your reseller.

System Requirements

For best results, the following system requirements are recommended:

- Computer with: 1GHz processor/512 MB RAM/200 MB available space/CD-ROM drive
- Internet Explorer version 6.0 or Mozilla Firefox 1.0 and above
- 3.5" SATA Hard Drive(s) Windows® XP (with Service Pack 2) or Vista®

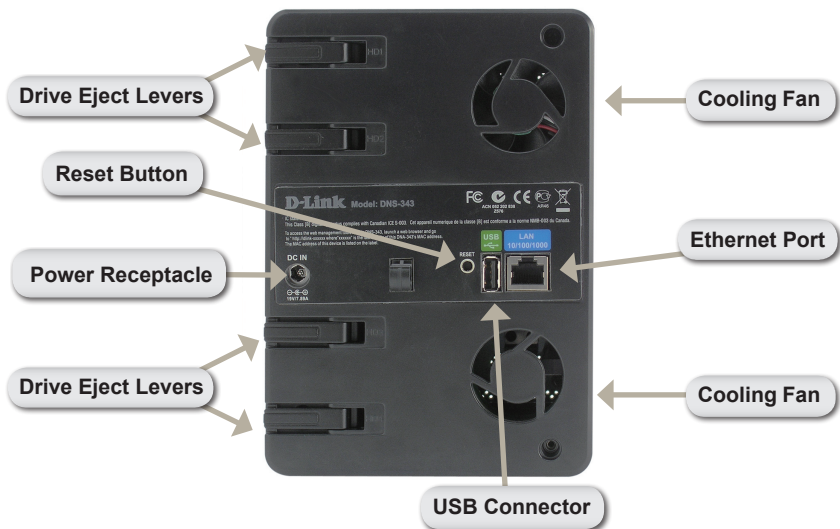
Hardware Overview

Front View



COMPONENT	DESCRIPTION
OLED Screen	This screen displays detailed information about the following: System Information HD Status Server Status RAID Status
Power Button	Use this button to switch the device on or off. To switch on the device press the button once. To switch off the device hold the button down for 5 seconds.
Next Button	Use this button to display the System Information (system state), HD Status (hard drive state), Server Status (server status state) on the OLED, and RAID status. Press the button once to alternate between the different Status screens.

Rear View



COMPONENT	DESCRIPTION
Drive Eject Levers	Use the provided levers to eject the SATA hard drives.
Reset Button	Press this button for over 5 seconds to reset the unit to factory defaults.
Power Receptacle	Connect the 19V / 7.89A power supply to the receptacle.
USB Connector	1x USB 2.0 (Type A) connector. USB Host port for Print Server or USB UPS monitoring.
Gigabit Ethernet Port	Use the Gigabit Ethernet Port to connect the DNS-343 to the local network.
Cooling Fans	The cooling fans are used to cool the hard drives and feature speed control. When the unit is first powered on, the fans rotate at a low speed and they will switch to a high speed when the temperature rises above 49° C.

Using the OLED

The DNS-343 ShareCenter™ 4-Bay Network Storage features an OLED that enables the administrator to easily view information about the DNS-343. The OLED display screen displays information about the network connection status and the number of hard drives installed and the bay ID's they are installed in. The OLED has four different screens:

System Information- This screen shows the following information:

- The hostname of the DNS-343.
- The Firmware version.
- The IP address of the DNS-343.
- The operating temperature.

Hard Drive Status- This screen shows the following information:

- The percentage of space used on the hard drives.

Server Status- This screen shows the following information:

- Whether a printer is connected to the server.
- The status of the UPNP server.
- The status of the iTunes server.
- The status of the FTP Server.

RAID Status- This screen shows the following information:

- The RAID health status.
- The status of the rebuilding progress.

Click the **Next** button once to alternate between the different Status screens.

Hardware Installation

1. Access the drive bays by sliding the faceplate up until it unlatches from the device.



2. Once the faceplate is unlatched, pull it off of the device, exposing the drive bays.



3. Insert a 3.5" SATA hard drive into each available drive bay. Make sure to align the drive connectors to the endpoints in the DNS-343. Gently push the drive in until it connects.



4. Attach the faceplate to the front of the device.



5. Connect an Ethernet cable into the available Ethernet port. This cable should connect the DNS-343 to your local network or directly to a computer for configuration.



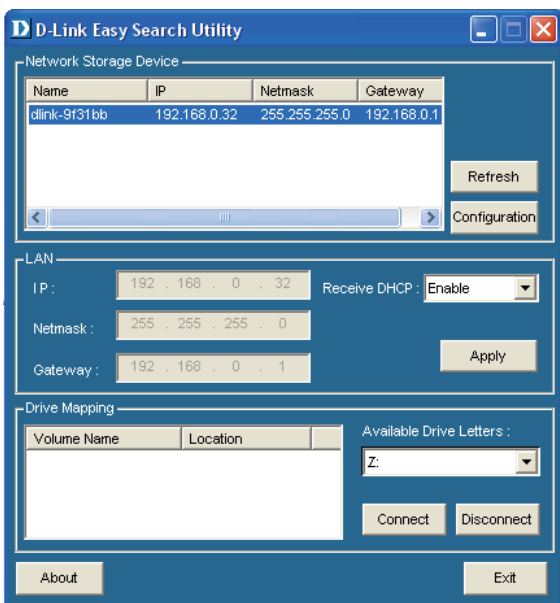
6. Finally, connect the supplied power adapter to the power receptacle on the back of the device.



Easy Search Utility

When first powered on, during the initial boot sequence, the DNS-343 will wait to be assigned an IP address via DHCP. If it does not receive a DHCP assigned IP address, by default it will boot up with a self-assigned IP address of 192.168.0.32.

The Easy Search Utility provided on the DNS-343 CD-ROM makes it simple to find any DNS-343 devices on your network, and it is recommended to use the Easy Search Utility when accessing and configuring the DNS-343 for the first time. Each DNS-343 will have a unique name of dlink-xxxxxx where 'xxxxxx' is the last six digits of its MAC address.



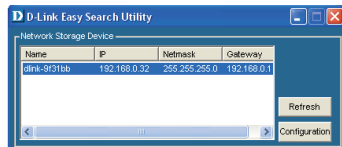
Getting Started

When logging into the DNS-343 for the first time, you will be asked to choose a drive configuration and format the drives. There are four available options, Standard, JBOD, RAID 0, RAID 1, and RAID 5.

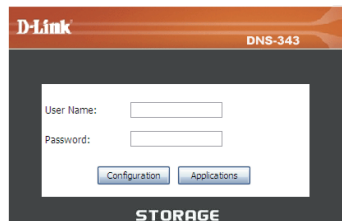
From the DNS-343 CD, select **Easy Search Utility**.



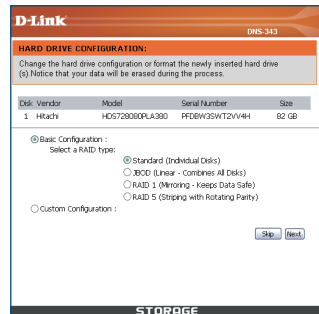
Highlight an available DNS-343 and click to access the web-based utility.



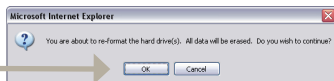
At the login screen, type **admin** for the user name and leave the password field blank. Click **Configuration**.



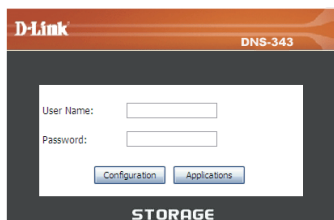
Select a type of hard drive configuration, and click **Next**.



A warning message will appear, stating that all data will be erased when the drives are formatted. Click **OK** to continue.



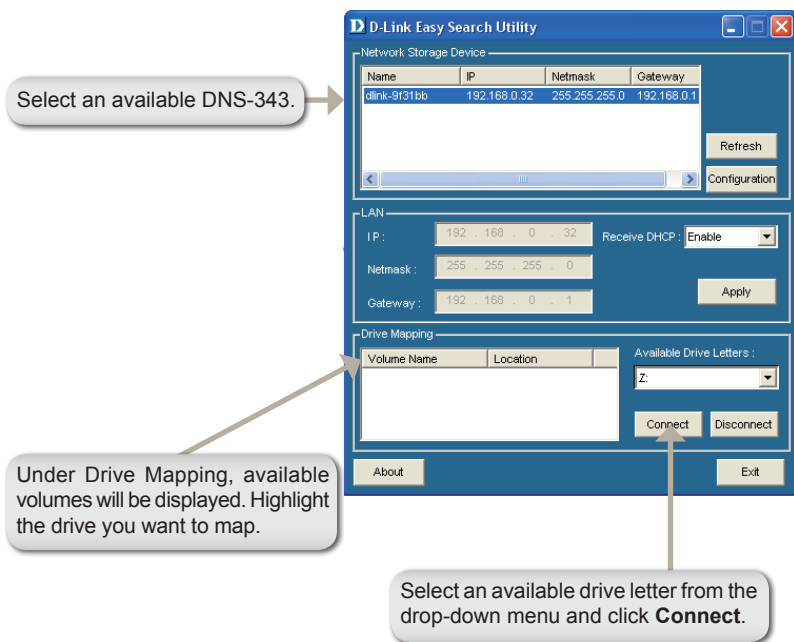
After the DNS-343 restarts, type **admin** for the user name and leave the password field blank. Click **Configuration**.



The Web UI will appear. Your DNS-343 setup is now complete.

Mapping a Drive

The Easy Search Utility makes it simple to map drives to your computer. To get started, insert the DNS-343 CD into your CD-ROM and launch the Easy Search Utility.



Once connected, your mapped drive(s) will appear in My Computer as network drives.

Add-ons

Install application and language packs to further enhance the functionality of your DNS-343. This powerful new feature on the DNS-343 allows users to customize the interface and usability of this unit. Adding features to the unit now only requires an Add-on installation as soon as new features are available.

ADD-ONS :

This section allows you to install application packages onto your system. In addition, you can also install language packages to suit your local language needs.

APPLICATION PACK :

File Path :

LANGUAGE PACK :

File Path :

ADD-ONS SUMMARY :

Enable
 Disable
 Start
 Stop

NO.	Module Name	Version	Status	Start/Stop	Delete
1	ADS	1.00	✓		
2	BitTorrent	1.00	✓		
3	LANGUAGE.ITC	1.00	✓		

Application Pack: Click on **Browse** to search for the specific application pack you want to install. After selecting the application pack, then click **Apply** to install.

Language Pack: Click on **Browse** to search for the specific language pack you want to install. After selecting the language pack, then click **Apply** to install.

Add-Ons Summary: In this section you can see a summary of the application/ language pack(s) you have installed. Under the *Status* column, you can see if a specific pack is currently enabled or disabled. Under the *Start/Stop* column, click the **Start** icon to enable the specified pack.

Click on the **Stop** icon to disable the specified pack. Under the *Delete* column, click the **Trash can** icon to uninstall the specified pack

The two Add-ons listed here are **BitTorrent Client Application** and **ADS**.

Note: *Keep a keen lookout on D-Link's local website for new Add-on releases.*

Notes

Notes

Technical Support

D-Link's website contains the latest user documentation and software updates for D-Link products.

U.S. and Canadian customers can contact D-Link Technical Support through our website or by phone.

United States

Telephone
(877) 453-5465

World Wide Web
<http://support.dlink.com>

Canada

Telephone
(800) 361-5265

World Wide Web
<http://support.dlink.com>



Version 1.4
October 1, 2009
6DNS343Q..03G

Copyright ©2009 D-Link Corporation/D-Link Systems, Inc. All rights reserved. D-Link, and the D-Link logo are registered trademarks of D-Link Corporation or its subsidiaries in the United States and other countries. Other trademarks are the property of their respective owners. Product specifications, size and shape are subject to change without notice, and actual product appearance may differ from that depicted on the packaging. Visit www.dlink.com for more details.