

D-Link Quick Installation Guide

This product can be setup using any current Web browser, i.e., Internet Explorer 6 or Netscape Navigator 7.0

DP-G310

AirPlus™ G 2.4GHz
Wireless USB Print Server



Before You Begin:

You will need an Ethernet-enabled device, such as a laptop or desktop computer and a USB printer that will connect to the DP-G310.

Important: TURN OFF the power to the printer before installing the DP-G310.

Check Your Package Contents



DP-G310 AirPlus™ G Wireless USB Print Server



CD-ROM (Software, Manual and Warranty)



5V DC, 2.5A Power Adapter



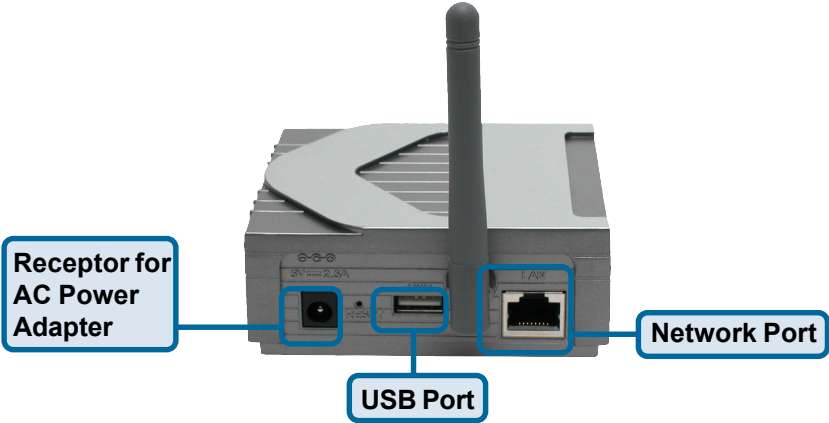
Using a power supply with a different voltage rating will damage this product and void its warranty.

If any of the above items are missing, please contact your reseller.

1

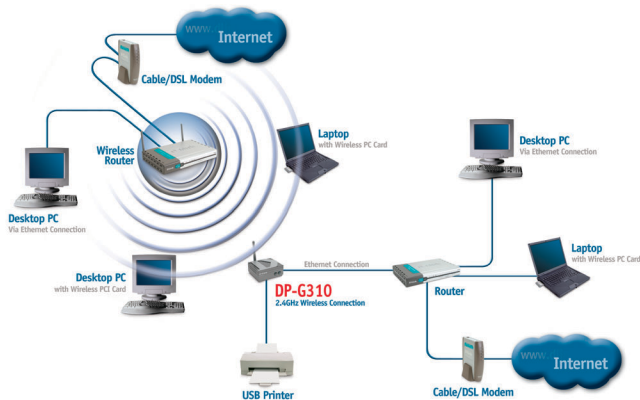
Connecting The DP-G310 To Your Network

First, insert one end of a straight-through CAT5 Ethernet cable into the DP-G310's Network Port (shown below.) Connect the other end of the cable to the LAN port of the gateway or switch. **Note: Do not connect the power cord to the DP-G310 until you are advised to do so.**



Warning!
Only a USB printer may be connected to the USB port of the DP-G310. Do not connect any other USB device to the DP-G310's USB port; doing so may damage the unit, voiding the warranty for this product.

Next, make sure that your Printer is turned **OFF**.
Using your USB cable, connect one end of the cable to the USB port of the DP-G310 and the other end to the USB port of your printer. Turn **ON** the printer.



Then, plug one end of the power adapter into the DP-G310 and the other end into your electric outlet. The DP-G310 will turn on and begin a self-test.

2

Setting up your DP-G310 for network printing in Windows XP

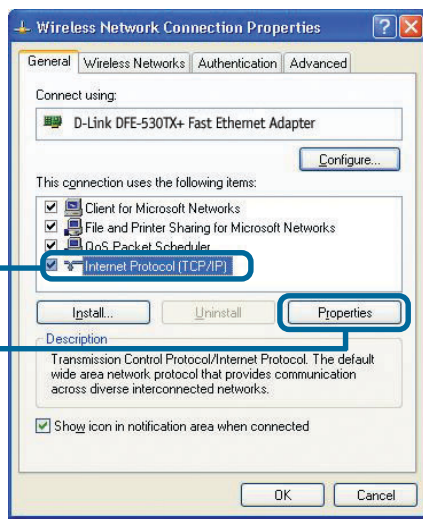
For additional Windows operating system setup or information on the Web-management interface, refer to the manual located on the CD-ROM.

The factory default IP address of the DP-G310 is **192.168.0.10**. In order to network to the printer through the DP-G310, the DP-G310 must have the same IP network settings as your network. To access the Print Server's Web configuration interface, assign an IP address on one of the wired PCs on your network to the same IP scheme as the Print Server.

Go to **Start > Right-click on My Network Places > select Properties > Double-click on the Network Connection** associated with your Network Adapter.

Click **Internet Protocol (TCP/IP)**

Click **Properties**

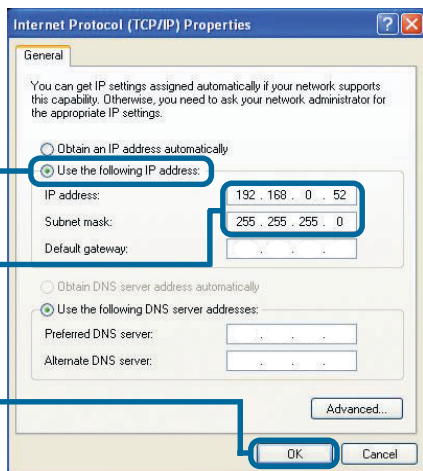


Input a static IP address in the same range as the print server.

Select **Use the following IP address**

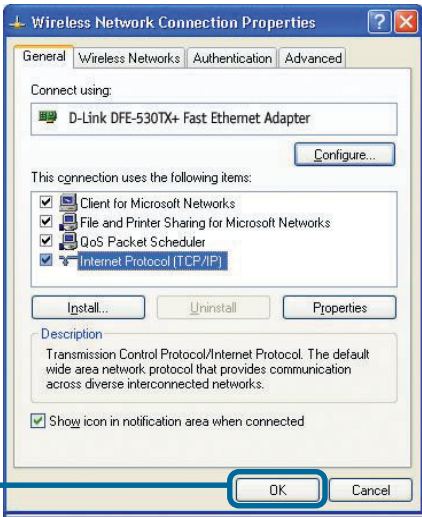
IP address: 192.168.0.52
Subnet mask: 255.255.255.0

Click **OK**



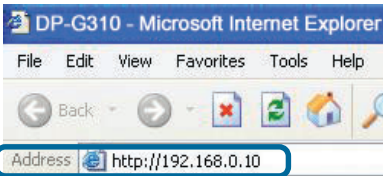
2

Setting up your DP-G310 for network printing in Windows XP (continued)



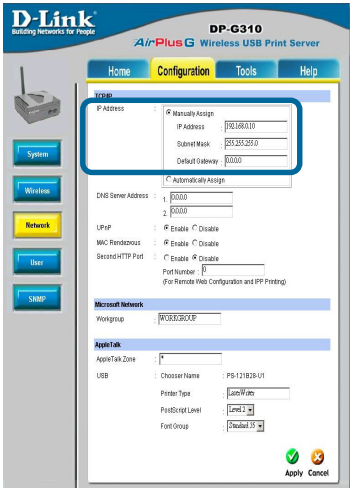
Click **OK** to apply the new settings

Using your Web browser enter the IP address of the DP-G310. By default the IP address is **192.168.0.10**



The IP address of the DP-G310 can be modified on the **Network** tab of the Web configuration menu.

The following instructions use the Print Server's default IP address as an example. Make the appropriate changes if you have modified the DP-G310's IP address.



2

Setting up your DP-G310 for network printing in Windows XP (continued)

Click on the **Configuration** tab to view the current **Wireless Settings**.

1 Select your **Connection Mode**

2 Enter the **SSID** of the remote access point or wireless router you wish to connect to.

3 If you would like to set **WEP Encryption**, select the encryption level and the key here.

Click on **System** to view the current **Port Settings**.

⚠ Write down on a piece of paper the Port Name that you wish to use.

1 What is Infrastructure and Ad-Hoc Mode?

Ad-Hoc: Refers to two or more 802.11 wireless devices that communicate directly with one another without using an access point or any connection to a wired network.

Infrastructure: Refers to an 802.11 network in which wireless devices communicate with each other by first going through an access point or wireless router.

2 What is an SSID?

A workgroup name of your Wireless Network. All wireless devices must all have the same SSID to communicate on the wireless network. All D-Link wireless devices have the default SSID of default, all lower case.

3 How does WEP Work?

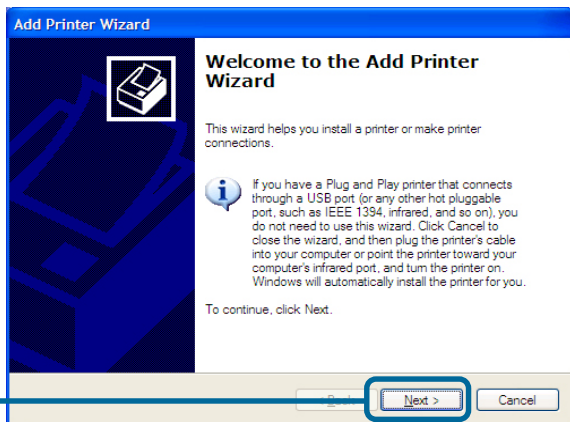
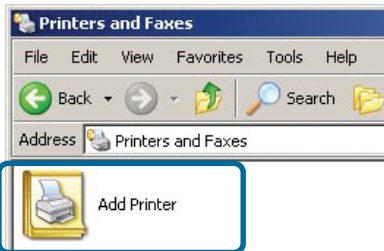
64-bit WEP encryption uses a 10 hexadecimal character key. 128-bit WEP uses a 26 hexadecimal character key. The WEP encryption key must match the WEP settings on your AP or wireless router to connect properly.

2

Setting up your DP-G310 for network printing in Windows XP (continued)

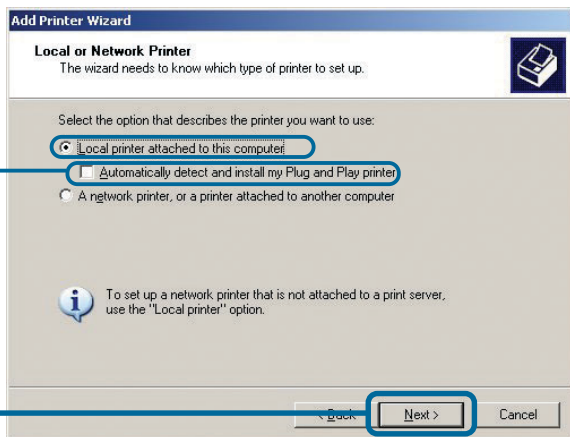
For Windows XP:

Go to **Start>Printers and Faxes>Add a Printer** or **Go to Start>Control Panel> Printers and Faxes**



Select **“Local Printer.”**

Please make sure to **uncheck Automatically detect and install my Plug and Play printer.**



2

Setting up your DP-G310 for network printing in Windows XP (continued)

Select **“Create a new port.”**
At the drop-down menu, choose
“Standard TCP/IP Port.”

Click **Next**

Add Printer Wizard

Select a Printer Port
Computers communicate with printers through ports.

Select the port you want your printer to use. If the port is not listed, you can create a new port.

☐ Use the following port: LPT1: (Recommended Printer Port)

Note: Most computers use the LPT1: port to communicate with a local printer. The connector for this port should look something like this:

☒ **Create a new port:**
type of port: Standard TCP/IP Port

Back Next > Cancel

Click **Next**

Add Standard TCP/IP Printer Port Wizard

Welcome to the Add Standard TCP/IP Printer Port Wizard

You use this wizard to add a port for a network printer.

Before continuing be sure that:

1. The device is turned on.
2. The network is connected and configured.

To continue, click Next.

Back Next > Cancel

Type in the IP address of the
Print Server. (i.e. 192.168.0.10)
The Port Name will automatically
be filled in.

Click **Next**

Add Standard TCP/IP Printer Port Wizard

Add Port
For which device do you want to add a port?

Enter the Printer Name or IP address, and a port name for the desired device.

Printer Name or IP Address: 192.168.0.10

Port Name: IP_192.168.0.10

Back Next > Cancel



This may take a few seconds

Setting up your DP-G310 for network printing in Windows XP (continued)

Select “Custom”

Click **Settings**

Add Standard TCP/IP Printer Port Wizard

Additional Port Information Required
The device could not be identified.

The detected device is of unknown type. Be sure that:
1. The device is properly configured.
2. The address on the previous page is correct.

Either correct the address and perform another search on the network by returning to the previous wizard page or select the device type if you are sure the address is correct.

Device Type
☐ Standard Generic Network Card
☒ Custom **Settings...**

< Back Next > Cancel

Select “**LPR**”

Input the Port Name of the port being used by the printer

Click **OK**

Configure Standard TCP/IP Port Monitor

Port Settings

Port Name: IP_192.168.0.10
Printer Name or IP Address: 192.168.0.10

Protocol
☐ Raw
☒ **LPR**

Raw Settings
Port Number: 515

LPR Settings
Queue Name: **PS-1123D6-P1**

☐ LPR Byte Counting Enabled
☐ SNMP Status Enabled
Community Name: public
SNMP Device Index: 1

OK Cancel

Click **Next**

Add Standard TCP/IP Printer Port Wizard

Additional Port Information Required
The device could not be identified.

The detected device is of unknown type. Be sure that:
1. The device is properly configured.
2. The address on the previous page is correct.

Either correct the address and perform another search on the network by returning to the previous wizard page or select the device type if you are sure the address is correct.

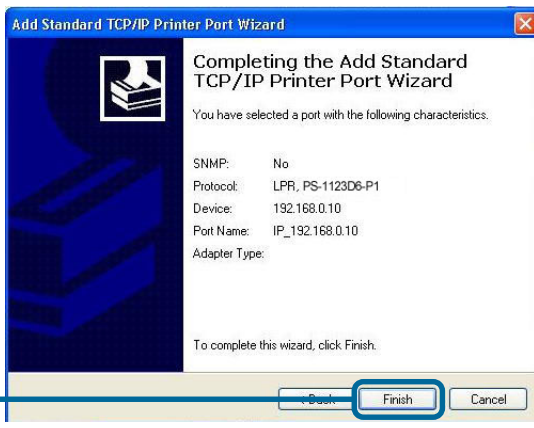
Device Type
☐ Standard Generic Network Card
☒ Custom Settings...

< Back **Next >** Cancel

2

Setting up your DP-G310 for network printing in Windows XP (continued)

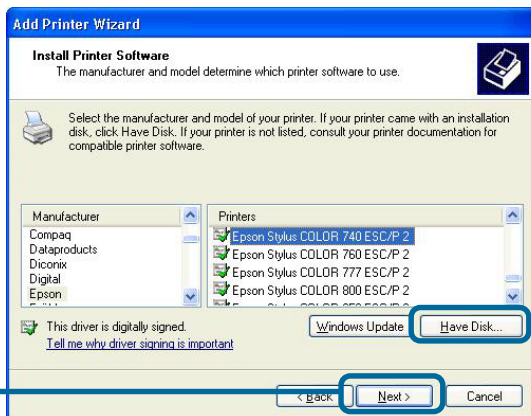
Click **Finish**



In this window, scroll down to find your printer. (If it is not listed, insert the driver CD or diskette that came with your printer.)

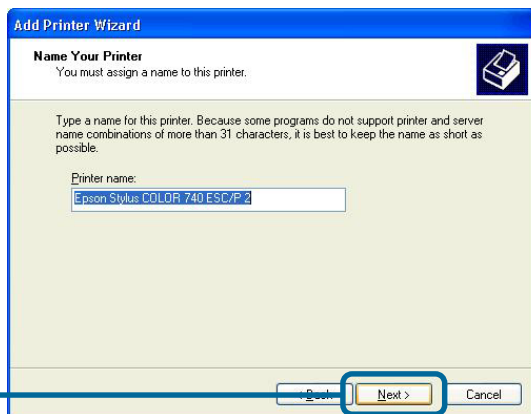
Click on **“Have Disk...”**
Then, scroll down and highlight the printer.

Click **Next**



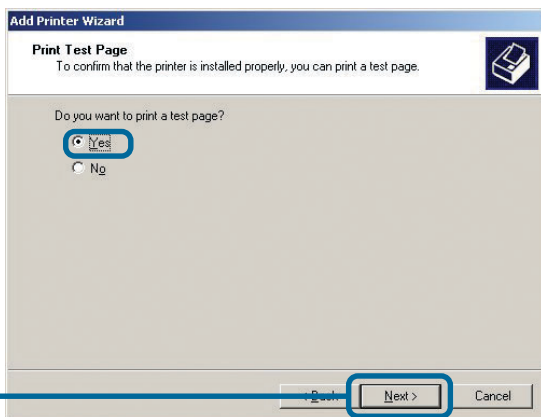
At this screen, you can input a name for this printer.

Click **Next**



2 Setting up your DP-G310 for network printing in Windows XP (continued)

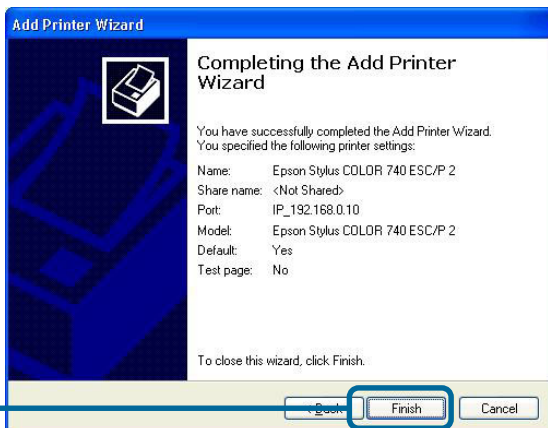
Select “Yes” to print a test page



Click **Next**

3 Your Setup is Complete!

The printer is now ready for printing with Windows XP, on your network.



Click **Finish**

Notes

Technical Support

You can find the most recent software and user documentation on the **D-Link** website.

D-Link provides free technical support for customers within the United States and within Canada for the duration of the warranty period on this product.

U.S. and Canadian customers can contact **D-Link** technical support through our website or by phone.

Tech Support for customers within the United States:

D-Link Technical Support over the Telephone:

(877) 453-5465

24 hours a day, seven days a week

D-Link Technical Support over the Internet:

<http://support.dlink.com>

email: support@dlink.com

Tech Support for customers within Canada:

D-Link Technical Support over the Telephone:

(800) 361-5265

Monday to Friday 8:30am to 9:00pm EST

D-Link Technical Support over the Internet:

<http://support.dlink.ca>

email: support@dlink.ca

