



USER MANUAL

DPH-125MS

VERSION 1.2



Table of Contents

Product Overview	3	Phone Settings.....	35
Package Contents.....	3	Call Tracing Log.....	37
System Requirements	3	Speed Dial.....	38
Introduction.....	4	Virtual Operator Settings.....	39
Features.....	5	Reboot	40
Hardware Overview	6	Restart System.....	40
Front.....	6	Restore Factory Setting.....	41
Rear	7		
Installation.....	8	Troubleshooting.....	42
Setup Using Microsoft Response Point Administrator.....	9	Networking Basics	43
Setting Up the IP Phone Manually.....	14	Check your IP address	43
Operating the IP Phone	20	Statically Assign an IP address	44
Configuration	23	Technical Specifications.....	45
Web-based Configuration Utility	23	Contacting Technical Support.....	47
Network.....	24	Warranty	48
Management	24	Registration.....	53
Network.....	25		
Network Settings	25		
VoIP	28		
SIP Settings	28		
SIP Account Settings	30		
Advanced.....	31		
QoS Settings	31		
NAT Traversal Settings	32		
Voice Settings.....	34		
Phone	35		

Package Contents

- D-Link DPH-125MS IP Phone
- Power Adapter
- CAT5 Ethernet Cable
- CD-ROM with User Manual, and QIG



Note: Using a power supply with a different voltage rating than the one included with the DPH-125MS will cause damage and void the warranty for this product.

System Requirements

- Computers with Windows® XP SP2 or Windows Vista™ operating systems with an installed Ethernet adapter
- Internet Explorer Version 6.0, Mozilla 1.7.12 (5.0), or Firefox 1.5 and above (for configuration)

Introduction

D-Link® VoiceCenter™, a Microsoft® Response Point™ phone system, is designed for small to medium-sized businesses with support for up to 50 users. VoiceCenter is an IP-based phone system that provides numerous advantages over traditional PSTN (analog) phone systems. Unlike previous generations of complicated, hard-to-use IP-based products, VoiceCenter is easy to install, manage, and maintain. VoiceCenter is also portable - businesses that need to relocate offices can take the phone system along. In addition, VoiceCenter provides state-of-the-art features such as Voice-activated Dialing, built-in Automated Attendant for answering and routing calls, Call Logs for managing phone usage, and Automatic Phone and Gateway Discovery allowing for a simplified setup process.

VoiceCenter is a scalable solution that supports up to 50 IP Phones and Users on a network. There are no fees or licenses required for adding more phones to the system. Thus, as your company grows and hires new employees, you only need to purchase more phones.

The DPH-125MS IP Phones include many features not found in analog phones as well as standard features that you are used to having. The One-touch Voice-activated Dialing feature allows users to reach anyone in the company directory and Microsoft Outlook address book by simply saying their name. Users can also transfer, park, and retrieve calls the same way. Voicemail to e-mail forwarding is another convenient feature. With the Administrator program you can easily view incoming and outgoing phone calls made by using the Call History function. In addition, standard features such as Mute, Hold, Transfer, Speakerphone, and 3-Way Conference functions are included.

Because the entire phone system is designed with simplicity in mind, you can set up a phone and user from start to finish in minutes. To minimize time and hassle with hardware setup, the IP Phone provides two Ethernet ports for connecting to a network and another Ethernet device such as a computer. This means instead of having to run an extra Ethernet cable for connecting a phone to a network, you can simply attach the phone with the Ethernet cable that was once connected to a computer and attach the computer to the phone for enabling network connectivity to both devices. Once the hardware connection is made, you can use the Configure Phone Wizard provided by the Microsoft Response Point software to assign extensions and names that only takes a couple of steps.

The D-Link DPH-125MS IP Phones, which is part of VoiceCenter, is ideal for today's productivity and efficiency-minded small to medium-sized business by providing state-of-the-art telephony features that is easy to install and convenient use.

*Requires a third party local phone service plan. D-Link Systems, Inc. is not a Telephone Service Provider or VoIP Phone Service Provider.

Features

- **Easily Add More IP Phones to Microsoft® Response Point™ Phone System - Up to 50.**
- **Designed with Simplicity in Mind - Easy to Install, Use and Manage.**
- **No Fees or Licenses Required for Adding More Phones.**
- **One-touch Voice-activated Dialing and Voicemail Access.**
- **Voicemail to E-mail Forwarding**
- **3-way Call-conferencing**
- **Speakerphone**
- **Mute, Hold, or Transfer calls**
- **View Call History on the LCD Display**
- **Connect a Phone and Computer Using a Single Ethernet Connection From a Network.**
- **Auto Phone Discovery Feature Makes Installing Hardware Quick and Easy.**

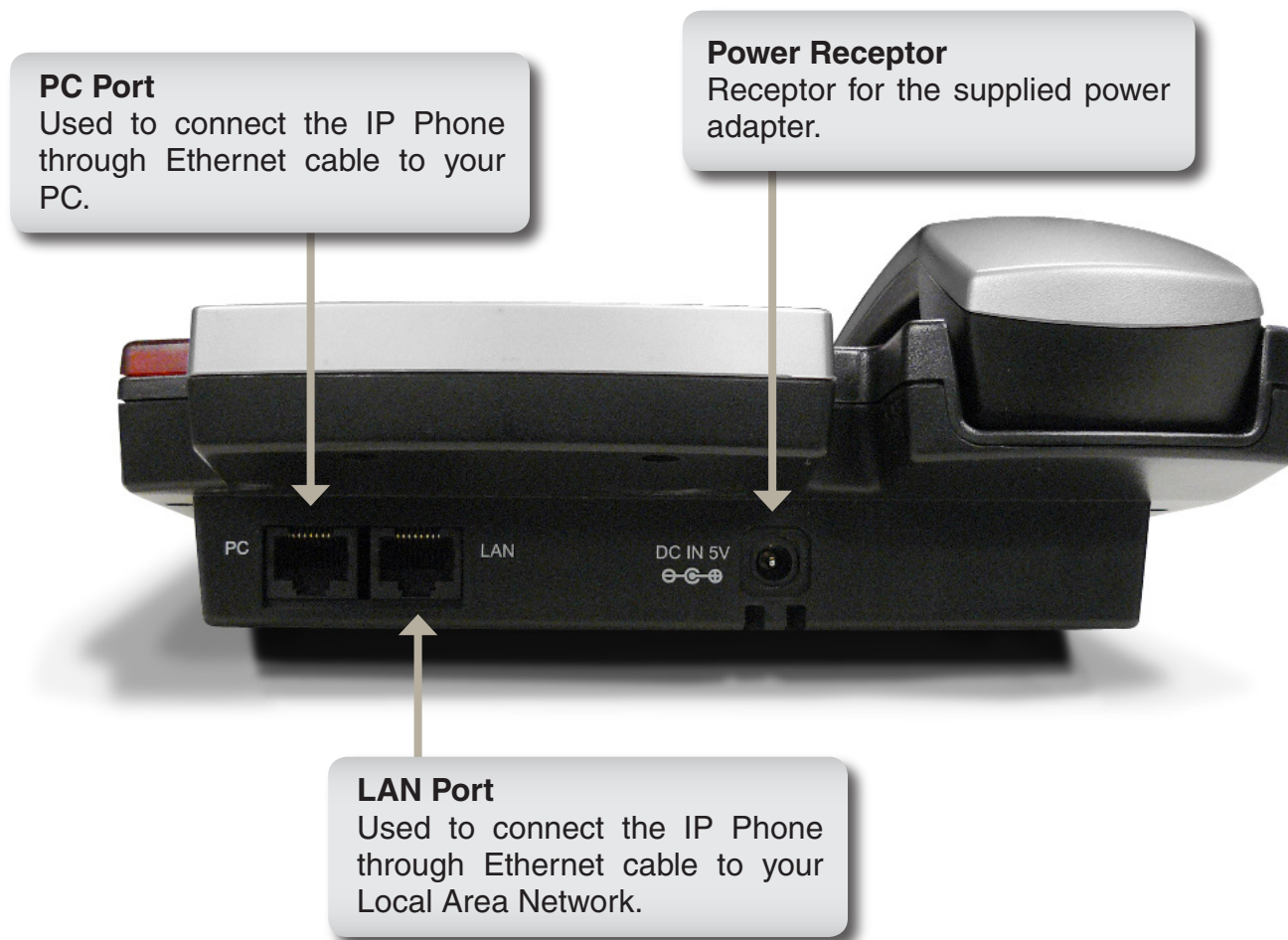
Hardware Overview

Front

(1)	Up / Down	Use this to cycle through the phone menu and adjust volume.
(2)	3-Way Conference	Enable 3-way conference.
(3)	Cancel / Left	Deny changes, cancel phone calls, ignore phone calls and backspace.
(4)	Call History	Access the call history.
(5)	Numeric Keypad	Input alphanumeric characters.
(6)	LCD Display	Displays menu, time, clock, name, phone number and call status.
(7)	LED Indicator	Indicates that phone is currently in use or ringing.
(8)	Voice Message	Check voice messages.
(9)	OK / Right	Save settings, exit menu, and dial.
(10)	Menu	Access the phone menu.
(11)	Response Point Button	Access the Response Point features and functions.
(12)	Transfer	Transfer the person you are currently having a conversation with to another line.
(13)	Hold	Place a person on Hold or answer a call waiting.
(14)	Mute/Function	Disable the phone's microphone so the person on the other line can not hear anything, access the language selection, access the time format.
(15)	Speaker Phone	Enables you to use the phone without using the handset.



Rear

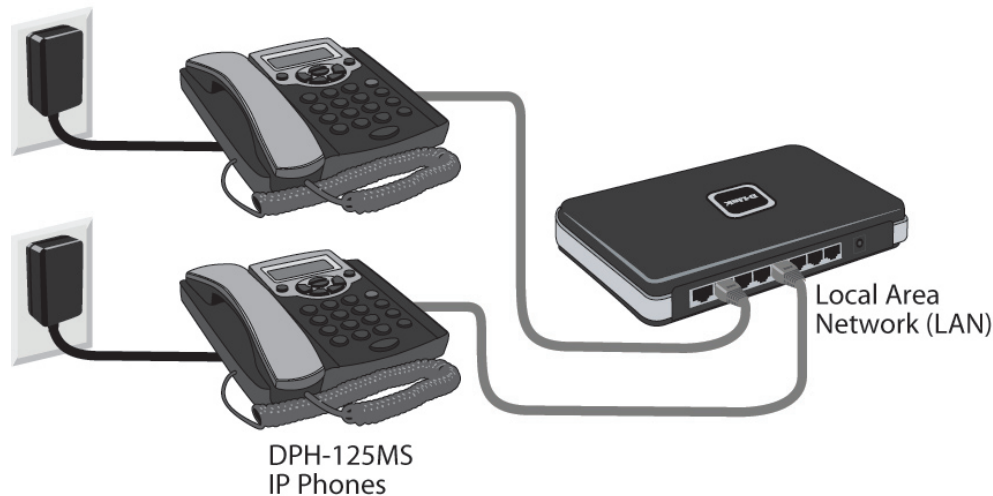


Installation

This section will walk you through the installation process. Use the following steps to connect the DPH-125MS IP Phone to your Local Area Network.

1. Connect one end of the Ethernet cable to the LAN Port on the DPH-125MS IP Phone and connect the other end of the Ethernet cable to your Local Area Network using a hub or switch.
2. Plug the power adapter into an AC outlet or power strip and plug the other in into the phone's AC input. The Power LEDs will light up to indicate proper operation.

Once you have connected the IP Phone to your network, it should look like the diagram below.



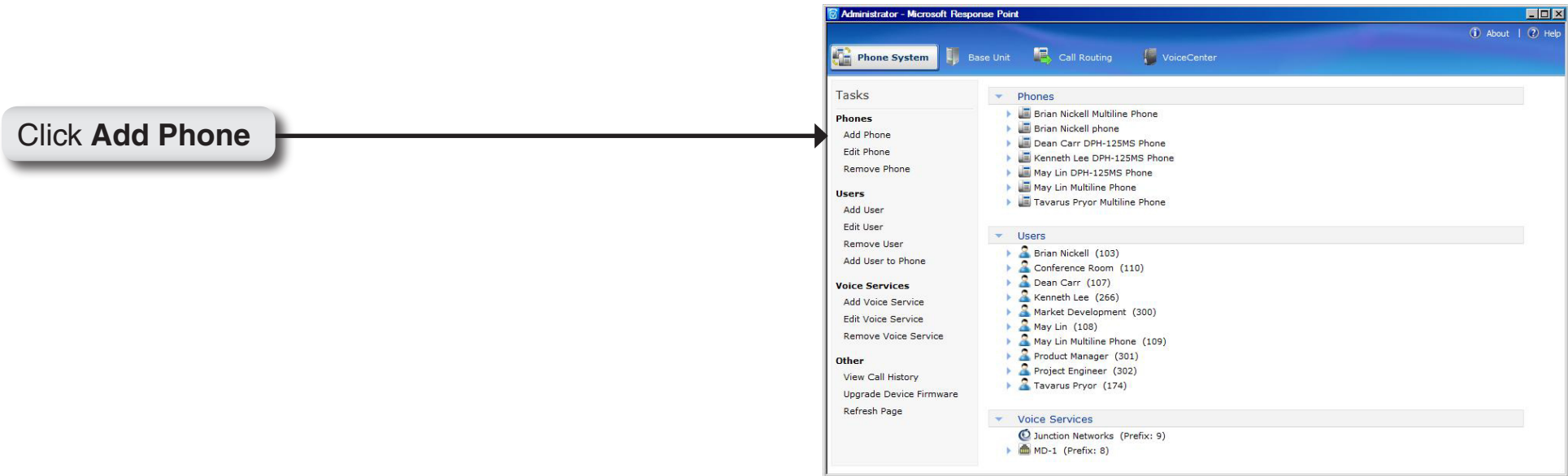
Setup Using Microsoft Response Point Administrator

This section will show you how to configure your new D-Link DPH-125MS IP Phone. Use the following steps to configure the IP Phone using Microsoft® Response Point™ Administrator.

Note: Microsoft Response Point Administrator only operates with Windows® XP SP2 or Windows Vista™.

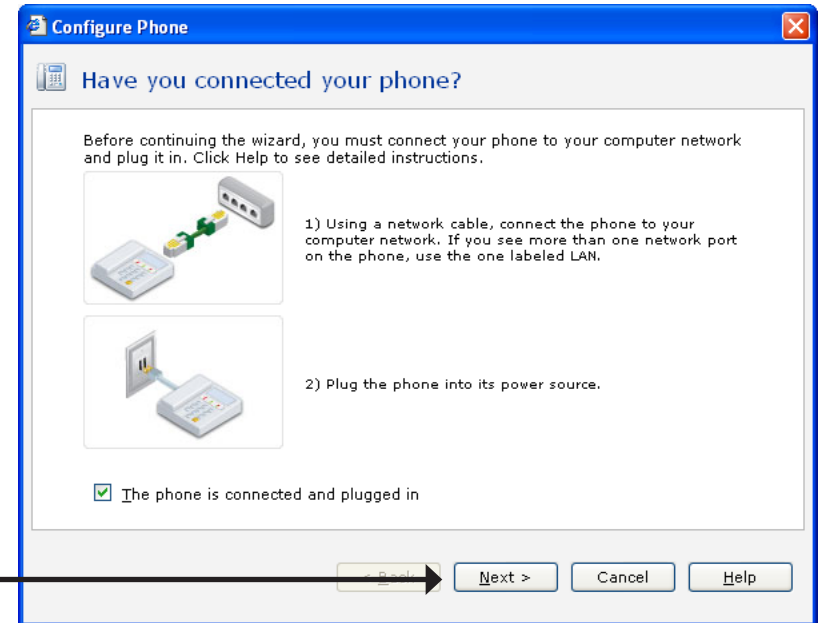
Open Microsoft Response Point Administrator and select the **Phone System** tab if necessary.

In the **Tasks** menu, under **Phones**, click **Add Phone** to launch the Configure Phone Wizard.



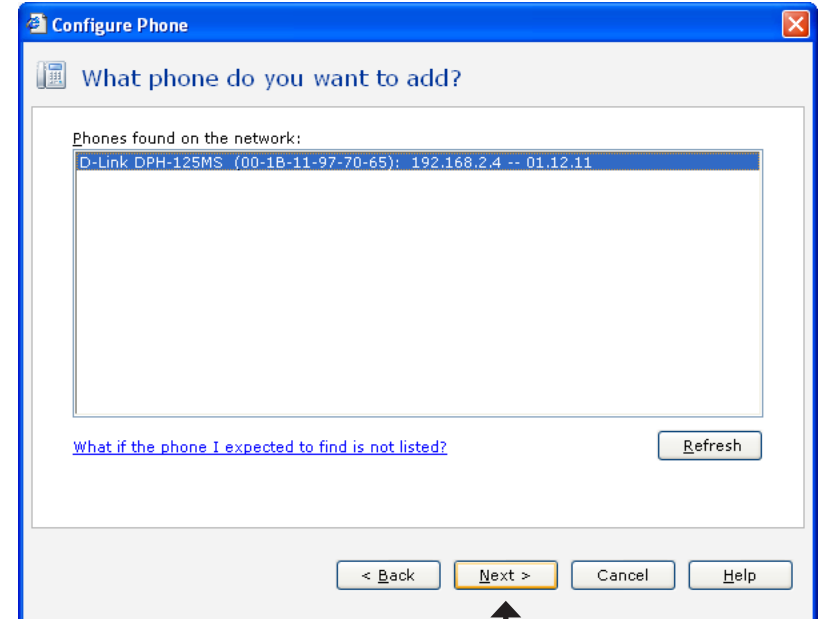
Select the check box confirming the IP Phone is connected and plugged in. Click **Next** to continue.

Click **Next**

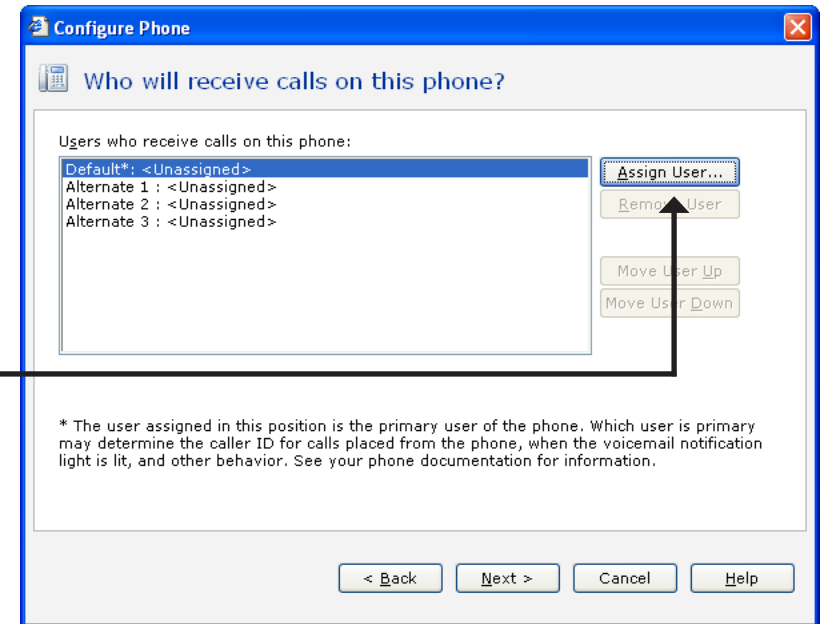


Select the D-Link DPH-125MS IP Phone you just connected and click **Next** to continue.

Click **Next**



For this step, you will add a new user and assign that user to the phone you just configured. Click **Assign User** to open the New User screen.

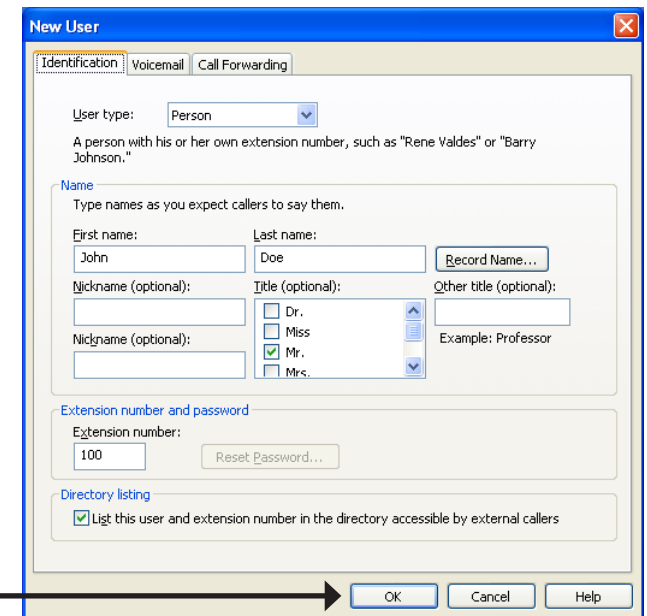


Click **Assign User...**

On the **Identification** tab, in the **User Type** box, select **Person** from the drop down menu if it is not already selected.

In the **Name** boxes, type the first and last name, and optional nick names or titles of the person who will use this phone. You should specify nicknames and titles if you think callers will use them when asking for this user.

In the **Extension number** box, change the extension number if desired and click **OK** to continue.



Click **OK**

You have now assigned the person's name to Line 1 with the extension number you specified. You can assign up to 3 additional users to this phone or click **Next** to continue.

Configure Phone

Who will receive calls on this phone?

Users who receive calls on this phone:

Default*: John Doe (100)	Assign User...
Alternate 1 : <Unassigned>	Remove User
Alternate 2 : <Unassigned>	
Alternate 3 : <Unassigned>	

Move User Up
Move User Down

* The user assigned in this position is the primary user of the phone. Which user is primary may determine the caller ID for calls placed from the phone, when the voicemail notification light is lit, and other behavior. See your phone documentation for information.

< Back Next > Cancel Help

Click **Next**

The owner and phone name have automatically been created for you. Click **Finish** to continue.

Configure Phone

What do you want to name this phone?

Owner of the phone:
John Doe (100)

Phone Name:
John Doe phone

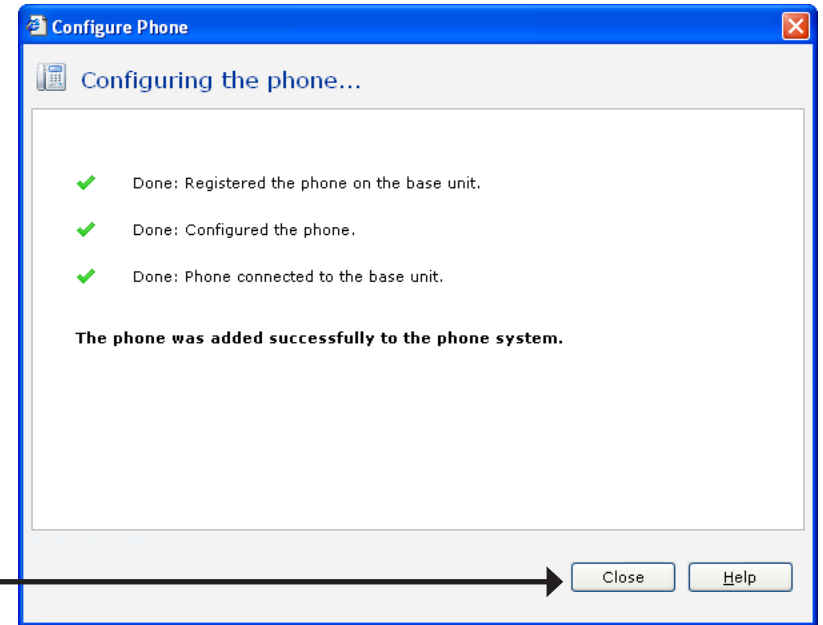
Click Finish to add the phone to the phone system.

< Back Finish Cancel Help

Click **Finish**

The IP Phone has been successfully added to the phone system.
Click **Close** to exit the configuration wizard.

Click **Close**



Setting Up the IP Phone Manually

This section will guide you in setting up the DPH-125MS IP Phone using the phone's built in Setup Menu. Please Refer to the Hardware Overview on page 6 for the key reference. Although this device has a built-in Web Interface, it is suggested that you do not make any changes manually. All configuration changes should be made through the Microsoft® Response Point™ software program only. In addition, some of the features listed in the Web Interface are not compatible with the DVX-2000MS Base Unit that this phone is designed to work with.

Display Name

- Press the **Menu** Key
- Enter in a Display Name for the phone

ADSL Dialup

Some Internet Service Providers (mostly ADSL) use PPPoE which requires that the user enter in an ID and a password to access the Internet. In this case, Enable ADSL DIALUP and enter the PPPoE ID and PPPoE password.

To Enable ADSL Dialup

- Press the **Down-Arrow** key
- Use the **Right-Arrow** key to select Enable

Setup ADSL ID

- Press the **Down-Arrow** key
- Enter the ADSL ID

Setup ADSL Password

- Press the **Down-Arrow** key
- Enter the ADSL Password

To Disable ADSL Dialup

- Press the **Down-Arrow** key
- Use the **Right-Arrow** key to select Disable

DHCP (Dynamic Host Configuration Protocol)

DHCP allows the network administrator to distribute IP addresses when a computer is plugged into a different place on the network. If your ISP provides a static IP address, you must disable DHCP and enter the IP address provided.

To Enable DHCP

- Press the **Down-Arrow** key
- Use the **Right-Arrow** or **Left-Arrow** key to select Enable
- Press the **Down-Arrow** key
- The IP address is automatically acquired
- Press the **Down-Arrow** key
- The Subnet mask is automatically acquired
- Press the **Down-Arrow** key
- Router IP automatically acquired

To Disable DHCP

- Press the **Down-Arrow** key
- Use the **Right-Arrow** or **Left-Arrow** key to select Disable
- Press the **Down-Arrow** key
- Enter in the IP Address
- Press the **Down-Arrow** key
- Enter in the Subnet Mask
- Press the **Down-Arrow** key
- Enter the router's IP Address

DNS Server IP

The Domain Name System (DNS) is the way that Internet domain names are located and translated into Internet Protocol addresses. There is probably a DNS server within close geographic proximity to your ISP that maps the domain names in your Internet request or forwards them to other servers on the Internet.

- Press the **Down-Arrow** key and the DNS Server IP will display.

SNTP Server IP

Simple Network Time Protocol (SNTP) is a protocol used to help match your system clock with an accurate time source. If you do not know your SNTP Server IP, please ignore this section. SNTP Server IP address can either be a URL or IP address.

- Press the **Down-Arrow** key
- Enter in the SNTP server IP or URL

Do Not Disturb

This setting allows the user to reject all incoming phone calls.

- Press the **Down-Arrow** key
- Use the **Right-Arrow** or **Left-Arrow** key to select “Enable” or “Disable”

CF (Call Forward) Unconditional

Enable CD Unconditional to forward all the incoming calls to another number. Otherwise set to disable. You will need to use a web-browser to input the forwarded phone number.

- Press the **Down-Arrow** key
- Use the **Right-Arrow** or **Left-Arrow** key to select “Enable” or “Disable”

CF (Call Forward) User Busy

Forwards all the incoming calls to another number when the user is busy on the phone.

- Press the **Down-Arrow** key
- Use the **Right-Arrow** or **Left-Arrow** key to select “Enable” or “Disable”

CF (Call Forward) No Answer

Forwards all incoming calls to another phone number after a certain number of rings.

- Press the **Down-Arrow** key
- Use the **Right-Arrow** or **Left-Arrow** key to select “Enable” or “Disable”

Anonymous Call

Enables the caller (user) to hide the name and phone number from the receiver.

- Press the **Down-Arrow** key
- Use the **Right-Arrow** or **Left-Arrow** key to select “Enable” or “Disable”

Anoy Call Rej. (Anonymous Call Rejection)

Reject any anonymous incoming calls.

- Press the **Down-Arrow** key
- Use the **Right-Arrow** or **Left-Arrow** key to select “Enable” or “Disable”

Ringling Type

Select one of the eight ring tones available.

- Press the **Down-Arrow** key
- Use the **Right-Arrow** or **Left-Arrow** key to select the ring type.

Note: *At this point you may save the settings and exit. The next two sections explain how to obtain the MAC address and firmware version.*

- Press the **Menu** key to exit the menu.
- When asked to save or cancel, press the **Right-Arrow** button to save the settings.

MAC Address

This menu displays the MAC address. User cannot modify the MAC address.

- Press the **Down-Arrow** key and the MAC address is displayed on the screen.

Version

The Version Menu displays the firmware version. You cannot modify the version number.

- Press the **Down-Arrow** key and the firmware version is displayed on the screen.

Language Selection

The DHP-125MS IP Phone supports 4 languages: English, German, Italian and Spanish.

- Press the **Mute/Func.** followed by the number **1** key
- Use the **UP** or **Down** arrows to select the preferred language.

Time Format

You may select the 12hr or 24hr time format.

- Press the **Mute/Func.** followed by the number **2** key
- Use the **UP** or **Down** arrows to select the time format.
- Press the **Right-Arrow** key when you are done.

Volume Adjustment

Ringer Volume

While the handset is in it's place:

- Press the **Up-Arrow** key to increase the ringer volume and the **Down-Arrow** key to decrease the ringer volume.

Speaker Volume

While the handset in it's place:

- Press the **Speaker** key
- Press the **Up-Arrow** key to increase the volume and the **Down-Arrow** key to decrease the volume.

Handset Volume

- Pick up the handset and press the **Up-Arrow** key to increase the volume, or press the **Down-Arrow** key to decrease the volume.

Operating the IP Phone

Dialing an IP Address

- Lift the handset or press the **Speaker** key.
- Dial the IP address (For Example: 192.168.0.1)
- Press the Right-Arrow key or wait until the timer expires to dial.

Dialing SIP Number

- Lift the handset or press the **Speaker** key.
- Dial the SIP number (For Example: 1866)
- Press the **Right-Arrow** key or wait until the timer expires to dial.

Speed Dialing

- Lift the handset or press the **Speaker** key.
- Dial the Speed Dial number (For Example: 08)

Answering a Phone Call

Note: The *CANCEL* Key may be used to reject a call.

- When the phone rings, lift the handset or press the **Speaker** key to begin the conversation.

Switching to another Line

- While your in a conversation on one line, press **Hold** to switch to another line.

Mute

Note: While mute is activated, sound from the caller can be heard from your speaker but your sound can not be heard by the caller.

- While having a conversation, press the **Mute/Func.** key to mute.
- Press the **Mute/Func.** key again to resume conversation.

Call Transfer

- While having a conversation, press **Hold** to place the person on hold.
- Press the **Transfer** key
- Dial the IP address or the extension number where you would like the call to be transferred.
- Press the **Transfer** key to transfer the call.

On Hold

- While having a conversation, press the **Hold** key to place the call on hold.
- Press the **Hold** key again to resume the conversation.

Call Forward

Note: Please refer to page 35 to setup call forwarding.

Three Way Conference

- Pickup the handset or press the Speaker key and call Person A.
- After Person A answers the phone, press the **Hold** key to place Person A on hold.
- Dial the extension or phone number of Person B and wait until Person B picks up the phone.
- Press the **Conference** key to begin a 3-way conference call.

Check Voice Messages

- Press the **Voice Message** key
- Enter the extension in which you want to check for voice messages

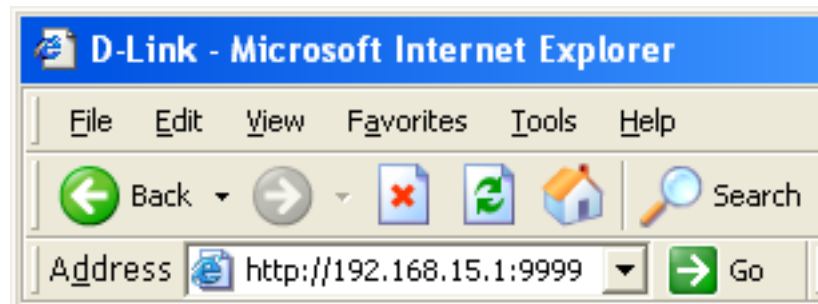
Configuration

This section will show you how to configure your new D-Link DPH-125MS IP Phone using the web-based configuration utility. Although this device has a built-in Web Interface, it is suggested that you do not make any changes manually. All configuration changes should be made through the Microsoft® Response Point™ software program only. In addition, some of the features listed in the Web Interface are not compatible with the DVX-2000MS Base Unit that this phone is designed to work with.

Web-based Configuration Utility

To access the configuration utility, open a web-browser such as Internet Explorer and enter the IP address of the IP Phone. The phone should get a DHCP IP address automatically. You will need to add **9999** at the end of the IP Address. (i.e. 192.168.15.1:9999)

Note: The IP address will default to 192.168.0.25 when there is no DHCP server available.



Network Management

User Name: Enter in a username to restrict access to the IP Phone's configuration menu.

Password: Enter in a password to restrict access to the IP Phone's configuration menu.

NTP Server IP: Network Time Protocol (NTP) is a protocol used to help match your system clock with an accurate time source (atomic clock or time server). It is good practice to have all your networked computers synchronized with one server.

Time Zone: Select your time zone. If there is daylight savings in your area, click the check box.

Product Page: DPH-125MS Hardware Version: v1.00 a2213 Firmware Version: 01.12.11 MAC address: 00.1B.11.97.70.65

D-Link

DPH-125MS // NETWORK VOIP ADVANCED PHONE REBOOT

MANAGEMENT

NETWORK SETTINGS

MANAGEMENT

WEB LOGIN SETTING

User Name:

Password:

DATE/TIME

NTP Server IP:

Time Zone: ☐ Daylight Saving

Get Time From: ☒ SIP Server ☐ NTP Server

VoIP

Network Network Settings

DHCP

DHCP: Dynamic Host Configuration Protocol (DHCP) Server address. The IP address information is obtained automatically from your ISP.

DNS Server: DNS address is provided by your ISP.

Product Page: DPH-125MS Hardware Version: v1.00 a2213 Firmware Version: 01.12.11 MAC address: 00.1B.11.97.70.65

D-Link

DPH-125MS // **NETWORK** VOIP ADVANCED PHONE REBOOT

MANAGEMENT
NETWORK SETTINGS

NETWORK SETTINGS

DHCP / PPPOE / STATIC IP

☒ DHCP ☐ PPPOE ☐ Static IP

DNS SETTING

DNS Server:

VoIP

PPPoE

Choose PPPoE if your ISP uses PPPoE. (Most DSL users use PPPoE).

PPPoE ID: Enter the PPPoE ID/username provided by your ISP.

PPPoE Password: Enter a PPPoE password.

DNS Server: Enter the DNS address provided by your ISP.

Product Page: DPH-125MS Hardware Version: v1.00 a2213 Firmware Version: 01.12.11 MAC address: 00:1B:11:97:70:65

D-Link

DPH-125MS	NETWORK	VOIP	ADVANCED	PHONE	REBOOT
-----------	---------	------	----------	-------	--------

MANAGEMENT

NETWORK SETTINGS

NETWORK SETTINGS

DHCP / PPPoE / STATIC IP

☐ DHCP ☒ PPPoE ☐ Static IP

PPPoE ID:

PPPoE Password:

DNS SETTING

DNS Server:

VoIP

Static

Choose Static IP if all WAN IP addresses are provided to you by your ISP.

IP Address: Enter in the IP address assigned to you by your Internet Service Provider.

Router IP: Enter in the router's IP address.

Subnet Mask: Enter the Subnet mask address.

DNS Server: Enter in the DNS server address provided by your ISP.

Submit: Click **Submit** for the new settings to take effect.

Product Page: DPH-125MS Hardware Version: v1.00 a2213 Firmware Version: 01.12.11 MAC address: 00.1B.11.97.70.65

D-Link

DPH-125MS	NETWORK	VOIP	ADVANCED	PHONE	REBOOT
------------------	----------------	-------------	-----------------	--------------	---------------

MANAGEMENT

NETWORK SETTINGS

NETWORK SETTINGS

DHCP / PPPoE / STATIC IP

☐ DHCP ☐ PPPoE ☒ Static IP

IP Address:

Router IP:

Subnet Mask:

DNS SETTING

DNS Server:

VoIP

VoIP

SIP Settings

Session Initiation Protocol (SIP) is the most popular Voice over IP standard. It enables two or more people to make phone calls, share multimedia and make multimedia conference over the internet. Please have an administrator setup these settings for you or obtain this information from your SIP service provider.

SIP Phone Port Number: Enter the SIP phone port number.

Registrar Server Domain Name/IP Address: Enter the registrar server domain name or IP address.

Registrar Server Port Number: Enter the port number for the registrar server.

Authentication Expire Time: The time that the phone waits to connect to the SIP server after the user dialed a number. If still not connected, the phone will disconnect and redial.

Outbound Proxy Domain Name/IP Address: Enter the outbound proxy domain name or IP address.

Outbound Proxy Port Number: Enter the outbound proxy port number.

Send messages via Outbound Proxy: You can Enable or Disable this option.

MWI Message Server Domain Name/IP Address: Enter the message server domain name or IP address.

Product Page: DPH-125MS Hardware Version: v1.00 a2213 Firmware Version: 01.12.11 MAC address: 00.1B.11.97.70.65

D-Link

DPH-125MS // NETWORK VOIP ADVANCED PHONE REBOOT

SIP SETTINGS

SIP ACCOUNT SETTINGS

SIP SETTINGS

SIP PHONE SETTING

SIP Phone Port Number: [1024 - 65535]

REGISTRAR SERVER

Registrar Server Domain Name/IP Address:

Registrar Server Port Number: [1024 - 65535]

Authentication Expire Time: sec. (Default: 3600 sec.)[60 - 9999]

OUTBOUND PROXY SERVER

Outbound Proxy Domain Name/IP Address:

Outbound Proxy Port Number: [1024 - 65535]

Send messages via Outbound Proxy: ☐ Disable ☒ Enable

MESSAGE SERVER

MWI Message Server Domain Name/IP Address: ☒ Same with Registrar Server

MWI Message Server Port Number: [1024 - 65535]

MWI Message Subscribe Expire Time: sec. (Default: 3600 sec.)[60 - 9999]

Voice Message Account:

OTHERS

Park Number:

AutoAnswer Number:

Session Timer: sec.[90 - 99999]

Media Port: [1024 - 65535]

Prack: ☒ Disable ☐ Enable

Session Refresher: ☒ None ☐ UAC ☐ UAS

Session Timer Method: ☒ Invite ☐ Update

UDP/TCP: ☒ UDP ☐ TCP

Register with Proxy: ☐ Disable ☒ Enable

VoIP

MWI Message Server Port Number: Enter the Message server port number.

MWI Message Subscribe Expire Time: Send the Subscribe Expire Time to the MWI message server.

Voice Message Account: Enter the Voice message account number.

Session Timer: The time interval in which the phone periodically refreshes the SIP sessions by sending repeated Invite requests. These Invite requests allow the user agent or proxies to determine the status of the SIP session.

Media Port: Real-time Transport Protocol port number. Provides end-to-end transfer of data with real-time audio.

Prack: Prack ensures that media information is exchanged and that the network checks before connecting the call. Select Enable for a more reliable connection.

Session Refresher: Select None to disable the SIP session timer support. Select UAC to initiate a SIP request. Select UAS to receive a SIP request and then return a response.

Session Timer Method: Select the SIP request method. Default method is Invite.

UDP/TCP: Select the SIP signal transmission method. Default method is UDP.

Register With Proxy: Enable or disable Register with Proxy.

SIP Account Settings

The IP Phone may have up to 4 accounts and can receive up to four different phone numbers.

Default Account: When you dial a number, the default account is used to dial. User Name of default account is displayed on the receiver's IP phone.

Account Active: Enable or disable this account.

Display Name: Name displayed on the caller's LCD..

SIP User Name: The number in the URI displayed on the LCD for the caller.

Authentication Username: User name to log into the SIP server.

Authentication Password: Password to log into the SIP server.

Register Status: Displays if the current phone is registered or unregistered with the SIP server.

Product Page: DPH-125MS Hardware Version: v1.00 a2213 Firmware Version: 01.12.11 MAC address: 00.1B.11.97.70.65

D-Link

DPH-125MS // NETWORK VOIP ADVANCED PHONE REBOOT

SIP SETTINGS SIP ACCOUNT SETTINGS

SIP ACCOUNT SETTING

Default Account: 1

ACCOUNT 1 SETTING

Account Active: Enable
 Display Name: JOE
 SIP User Name:
 Authentication User Name:
 Authentication Password:
 Register Status: UnRegister

ACCOUNT 2 SETTING

Account Active: Disable
 Display Name:
 SIP User Name:
 Authentication User Name:
 Authentication Password:
 Register Status: UnRegister

ACCOUNT 3 SETTING

Account Active: Disable
 Display Name:
 SIP User Name:
 Authentication User Name:
 Authentication Password:
 Register Status: UnRegister

ACCOUNT 4 SETTING

Account Active: Disable
 Display Name:
 SIP User Name:
 Authentication User Name:
 Authentication Password:
 Register Status: UnRegister

Submit Reset

VoIP

Advanced QoS Settings

Voice TOS: Sets the type of service for this Internet datagram.

SIP TOS: Sets the type of service for this higher priority of signaling packet.

Product Page: DPH-125MS

Hardware Version: v1.00 a2213

Firmware Version: 01.12.11

MAC address: 00.18.11.97.70.65

D-Link

DPH-125MS

NETWORK

VOIP

ADVANCED

PHONE

REBOOT

QOS SETTINGS

NAT TRAVERSAL SETTINGS

VOICE SETTINGS

QOS SETTINGS

QOS SETTING

Voice TOS: 5 [0 - 7]

SIP TOS: 0 [0 - 7]

Submit

Reset

VoIP

NAT Traversal Settings

NAT traversal is a challenge that all Service Providers looking to deliver public IP-based voice service must solve. The challenge is to provide secure connection to subscribers behind NAT (Network Address Translation) devices and Firewalls. This IP Phone implements NAT traversal function for solving the Firewall and NAT traversal problems.

STUN: Simple Traversal of User Datagram Protocol through Network Address Translators is a protocol that allows applications to determine the types of NATs and firewalls that are in between them and the internet. STUN also provides the ability for applications to determine the public IP addresses allocated to them the NAT.

STUN Domain Name/IP Address: Enter the STUN domain name or IP address if STUN is enabled.

User Defined External IP/Port: Enable or disable the settings for configuring the user defined external address and port number.

External IP Address: Select whether you want to use the STUN server to get the external IP address or use UPnP to get the external IP address.

External SIP Port: Displays the External SIP port number.

External Media Port: Displays the External media port number.

UPnP: Enable or disable universal plug and play devices. Some NAT supports UPnP so STUN is not required and must be disabled.

Product Page: DPH-125MS Hardware Version: v1.00 a2213 Firmware Version: 01.12.11 MAC address: 00.1B.11.97.70.65

D-Link

DPH-125MS // NETWORK VOIP **ADVANCED** PHONE REBOOT

QOS SETTINGS
NAT TRAVERSAL SETTINGS
VOICE SETTINGS

NAT TRAVERSAL SETTINGS

STUN SERVER SETTING

STUN: ☒ Disable ☐ Enable
STUN Domain Name/IP Address:

MANUAL CONFIG EXTERNAL IP/PORT

User Defined External IP/Port: ☒ Disable ☐ Enable
☒ Manual Set
 External IP Address: ☐ Use Stun get External IP Address
☐ Use UPnP get External IP Address
 External SIP Port: [1024 - 65535]
 External Media Port: [1024 - 65535]

UPNP SETTING

UPnP: ☒ Disable ☐ Enable

NAT KEEPALIVE TIME SETTINGS

Always send keepalive packet: ☒ Disable ☐ Enable
 KeepAlive Time: (Default: 30 sec.) [10 - 45]

VoIP

by

IP

Always send KeepAlive Packet: Choose to Enable or disable Always Send KeepAlive Packets.

KeepAlive Time: The time interval that the IP phone always sends the keep alive packet in order to ensure NAT works properly.

Voice Settings

Codec: Voice Compression Algorithm priority settings. Select from the most used codec to the least used codec.

RTP Packet Length: Real-Time Transfer Protocol (RTP) packet length.

DTMF Method: Enable or disable VAD.

Payload Type: Select the tone method for IP phone.

Product Page: DPH-125MS Hardware Version: v1.00 a2213 Firmware Version: 01.12.11 MAC address: 00.1B.11.97.70.65

D-Link

DPH-125MS // NETWORK VOIP **ADVANCED** PHONE REBOOT

QOS SETTINGS
NAT TRAVERSAL SETTINGS
VOICE SETTINGS

VOICE SETTINGS

VOICE SETTING

Codec (Priority 1): G.711 u-law
 Codec (Priority 2): G.729A
 Codec (Priority 3): non-used

G.711 u-Law 20ms
 G.711 A-Law 20ms
 G.729A 20ms

RTP Packet Length: 20ms

DTMF Method: ☒ Out Band ☐ In Band ☐ SIP INFO

Payload Type: 101 [96 - 127]

Submit Reset

VoIP

Phone

Phone Settings

Tone Setting: Select the tone for a particular country.

Ringer Type: Select the type of ring (1 to 4).

Hold Tone: Select melody or tone when the HOLD key is pressed.

Do Not Disturb: Reject all incoming calls.

Call Waiting: Enable or disable call waiting.

Anonymous Call:

1. If DISABLE is selected, full URI and name are sent to the receiver's phone when the user makes a phone call. The URI and name of the caller are displayed on the receiver's phone.
2. When Full URI is selected, only user name is displayed on the receiver's phone when the user makes a phone call.
3. When Display Name is selected, only name is displayed on the receiver's phone when the user makes a phone call.

Anonymous Call Reject: Select Enable to reject anonymous calls.

Call Forward:

1. Click **No Answer** to enable call forward to another number when no one answers the phone after 180s (default). The timer can be changed from 0-600s. Refer to section 7.14 to change the timer.
2. Click **Busy** to enable call forward to another number when user is busy on the phone.
3. Click **Unconditional** to transfer all incoming calls to another number.

Enter the call forward number on the text box.

Product Page: DPH-125MS Hardware Version: v1.00 a2213 Firmware Version: 01.12.11 MAC address: 00.1B.11.97.70.65

D-Link

DPH-125MS // NETWORK VOIP ADVANCED PHONE REBOOT

PHONE SETTINGS

CALL TRACING LOG

SPEED DIAL

VIRTUAL OPERATOR SETTINGS

PHONE SETTINGS

PHONE SETTING

Tone Setting: America

Ringer Type: Tone 2

Hold Tone: ☒ Melody ☐ Tone

Do Not Disturb: ☒ Disable ☐ Enable

Call Waiting: ☐ Disable ☒ Enable

Anonymous Call: ☒ Disable ☐ Full URI ☐ Display Name

Anonymous Call Reject: ☒ Disable ☐ Enable

☐ No Answer

☐ Busy

☐ Unconditional

Transfer end of Conference Call: ☒ Disable ☐ Enable

Pound Key Dial: ☐ Disable ☒ Enable

Missed Call Display: ☐ Disable ☒ Enable

TIMER

NTP Recycle Timer: 1 hour [1 - 24] [Network Time Adjustment Period](#)

Inter Digit Timer: 5 sec. [0 - 60] 0: Disable

Originating Not Accept Timer: 180 sec. [0 - 600] 0: Disable

Incoming No Answer Timer: 180 sec. [0 - 600] 0: Disable

Hold Recall Timer: 180 sec. [0 - 600] 0: Disable

Auto Speaker Off Timer: 30 sec. [0 - 600] 0: Disable

Submit Reset

Transfer End of Conference Call: Can transfer the call after the end of conference call.

Pound Key Dial: Enable or disable Pound key Dial. Pound Key (#) can be defined as a <send> key.

Miss Call Display: Enable or disable the miss call which display on the LCD.

Call Tracing Log

Call Tracing Log keeps a record of all the phone activities. This log can be used to troubleshoot hardware problems.

Product Page: DPH-125MS
Hardware Version: v1.00 a2213
Firmware Version: 01.12.11
MAC address: 00.18.11.97.70.65

DPH-125MS

NETWORK

VOIP

ADVANCED

PHONE

REBOOT

PHONE SETTINGS

CALL TRACING LOG

SPEED DIAL

VIRTUAL OPERATOR SETTINGS

CALL TRACING LOG

TRACE LOG

No.	Trace Log
000	Flash read Not Porting
001	Flash read Not Porting
002	Flash read Not Porting
003	Flash read Not Porting
004	Flash read Not Porting
005	Flash read Not Porting
006	!0 FW Version: 01.12.11
007	!0 FileSystem SetupInfo Size = 3952
008	!2 ReadSetupInfo: 0.
009	!6 Basic number for random: (59)
010	!6 WriteDDL: 454
011	!6 WritePDL: 998
012	!0 Language:(0)
013	total if=2
014	!6 IPConfig Fin!
015	DSPInit
016	!6 PB_ClearAll.
017	!6 UDM_ClearAll.
018	!0 phone_task: 0.
019	--- dhcp_inform_retry ---
020	--- dhcp_inform_retry ---
021	--- dhcp_inform_retry ---
022	--- dhcp_inform_retry ---
023	!1 Warning: HTTP len(0)
024	--- dhcp_inform_retry ---
025	--- dhcp_inform_retry ---
026	--- dhcp_inform_retry ---
027	--- dhcp_inform_retry ---
028	!6 WriteSetupInfo: 0. len(00000F70)
029	--- dhcp_inform_retry ---
030	--- dhcp_inform_retry ---

VoIP

Speed Dial

Speed dial numbers can be accessed from the IP phone.

Product Page: DPH-125MSHardware Version: v1.00 a2213Firmware Version: 01.12.11MAC address: 00.1B.11.97.70.65

D-Link

DPH-125MS

NETWORK

VOIP

ADVANCED

PHONE

REBOOT

PHONE SETTINGS

CALL TRACING LOG

SPEED DIAL

VIRTUAL OPERATOR SETTINGS

SPEED DIAL

SPEED DIAL SETTING (MAXIMUM 63 CHAR.)

Number 00:

Number 01:

Number 02:

Number 03:

Number 04:

Number 05:

Number 06:

Number 07:

Number 08:

Number 09:

Update

Reset

VoIP

Virtual Operator Settings

Telephone Number: Enter the phone number for the Virtual Operator.

Product Page: DPH-125MSHardware Version: v1.00 a2213Firmware Version: 01.12.11MAC address: 00.18.11.97.70.65

D-Link

DPH-125MS //

PHONE SETTINGS

CALL TRACING LOG

SPEED DIAL

VIRTUAL OPERATOR SETTINGS

NETWORK

VOIP

ADVANCED

PHONE

REBOOT

VIRTUAL OPERATOR SETTINGS

VIRTUAL OPERATOR

Telephone Number:

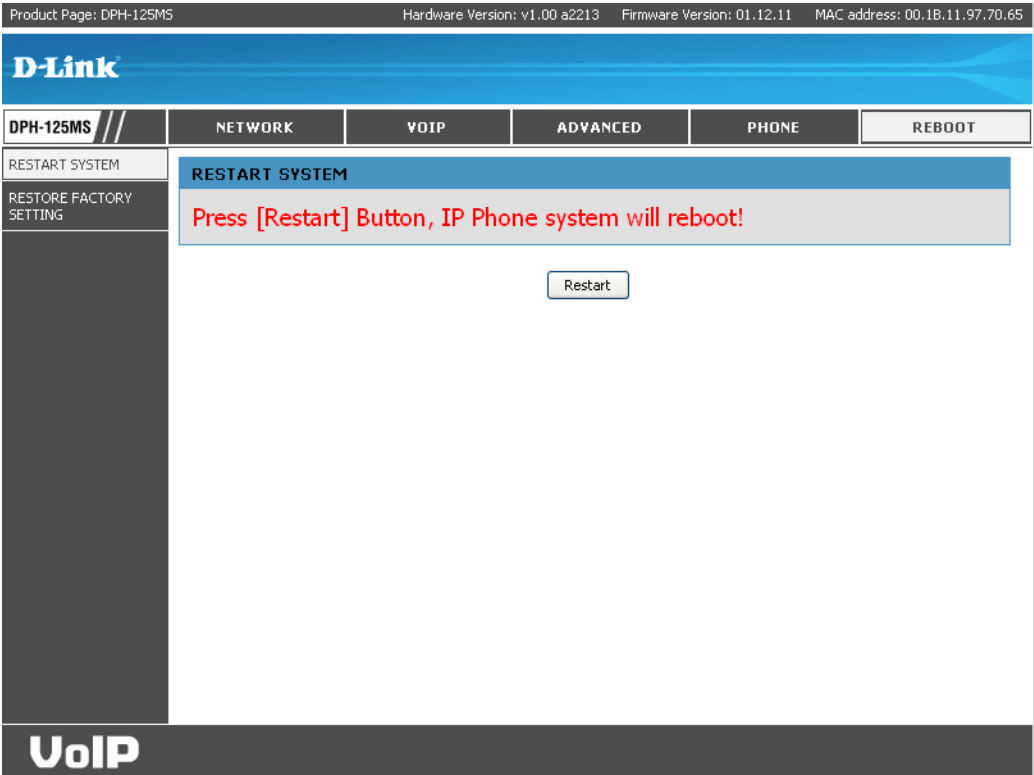
Submit

Reset

VoIP

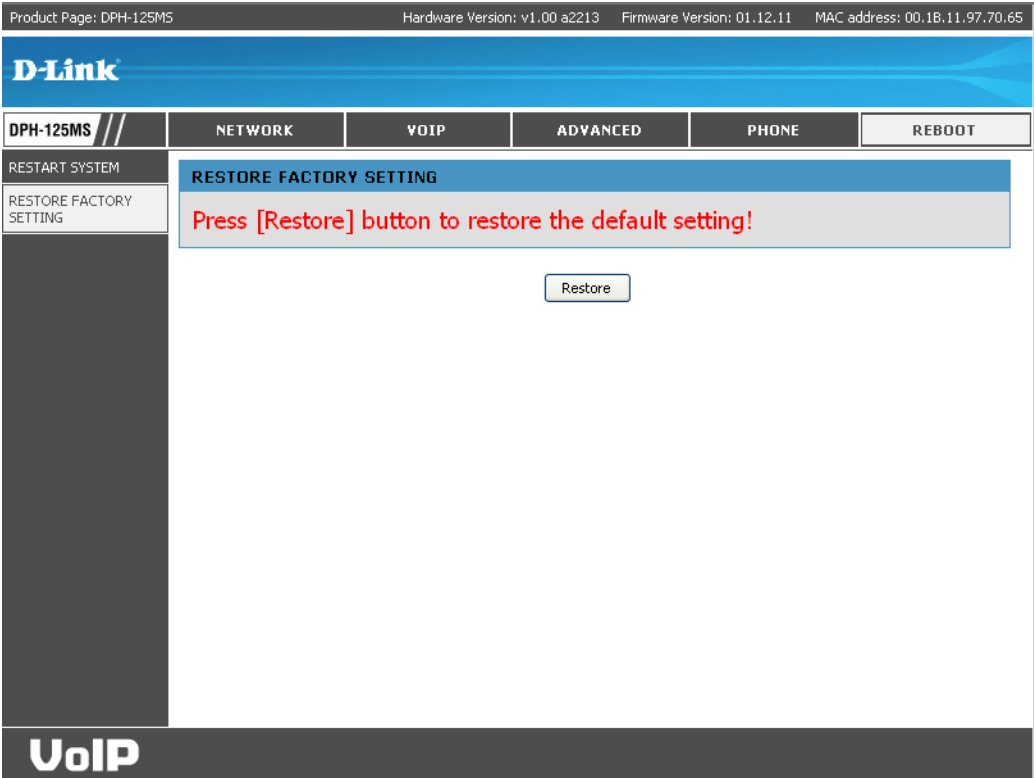
Reboot Restart System

Restart: Click **Restart** to update all the settings and reboot the system.



Restore Factory Setting

Restore: Click **Restore** to restore the Gateway to it's factory default settings.



Troubleshooting

This chapter provides solutions to problems that can occur during the installation and operation of the DHP-125MS. Read the following descriptions if you are having problems.

There is no DIAL tone.

- Check if there are any loose connections.

Why can't I dial my friend's SIP number?

- Check Registrar Server Domain Name/IP address and Outbound Proxy Domain Name/IP Address (under SIP Settings in Configuration Menu). Make sure you have the right Name or IP Address.
- Check the LCD display on your phone to see if there is a name or number displayed on the screen. If the name or number is not displayed, use a web browser and access the configuration menu. Make sure that the Registrar Server Domain Name/IP Address is correct.
- Check the register status under SIP Account Settings in the configuration menu (from web browser). If your status is unregistered, it means you do not have a SIP account. Contact your SIP service provider to get an account.

I accidentally set DSL to enable and now the phone does not boot up?

- Unplug the power cord from the IP phone. Wait 2 seconds and plug the power cord back in the IP phone. Press and hold MENU key. The system should bypass boot up and go straight into phone setup menu. Modify the phone setting and make sure you save it before you exit.

Why do I get “Can't Upgrade Now” screen when I click Submit in the configuration menu?

- Make sure you exit setting mode (phone book, menu, speed dial...) before you click Submit in the configuration menu.

Networking Basics

Check your IP address

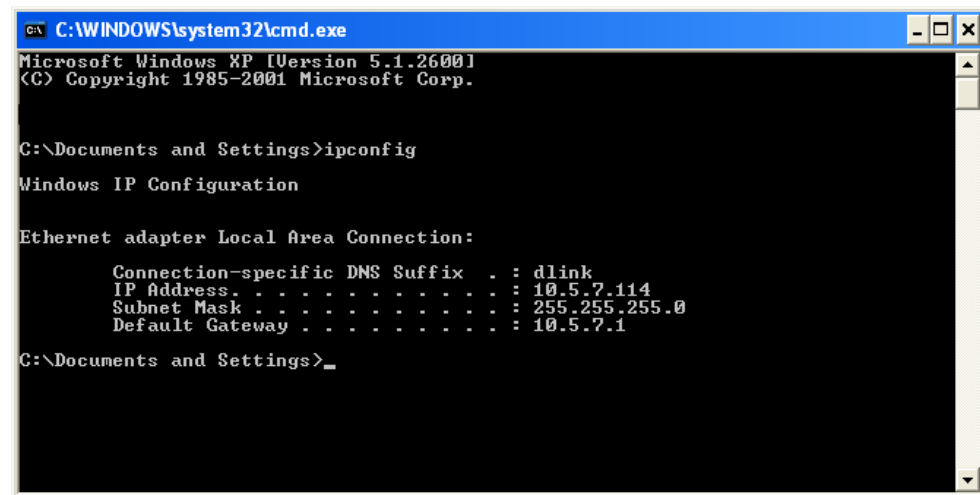
After you install your new D-Link adapter, by default, the TCP/IP settings should be set to obtain an IP address from a DHCP server (i.e. wireless router) automatically. To verify your IP address, please follow the steps below.

Click on **Start > Run**. In the run box type **cmd** and click **OK**.

At the prompt, type **ipconfig** and press **Enter**.

This will display the IP address, subnet mask, and the default gateway of your adapter.

If the address is 0.0.0.0, check your adapter installation, security settings, and the settings on your router. Some firewall software programs may block a DHCP request on newly installed adapters.



```
C:\WINDOWS\system32\cmd.exe
Microsoft Windows XP [Version 5.1.2600]
(C) Copyright 1985-2001 Microsoft Corp.

C:\Documents and Settings>ipconfig

Windows IP Configuration

Ethernet adapter Local Area Connection:

    Connection-specific DNS Suffix  . : dlink
    IP Address. . . . .               : 10.5.7.114
    Subnet Mask . . . . .             : 255.255.255.0
    Default Gateway . . . . .         : 10.5.7.1

C:\Documents and Settings>
```

If you are connecting to a wireless network at a hotspot (e.g. hotel, coffee shop, airport), please contact an employee or administrator to verify their wireless network settings.

Statically Assign an IP address

If you are not using a DHCP capable gateway/router, or you need to assign a static IP address, please follow the steps below:

Step 1

Windows® XP - Click on **Start > Control Panel > Network Connections**.

Windows® 2000 - From the desktop, right-click **My Network Places > Properties**.

Step 2

Right-click on the **Local Area Connection** which represents your D-Link network adapter and select **Properties**.

Step 3

Highlight **Internet Protocol (TCP/IP)** and click **Properties**.

Step 4

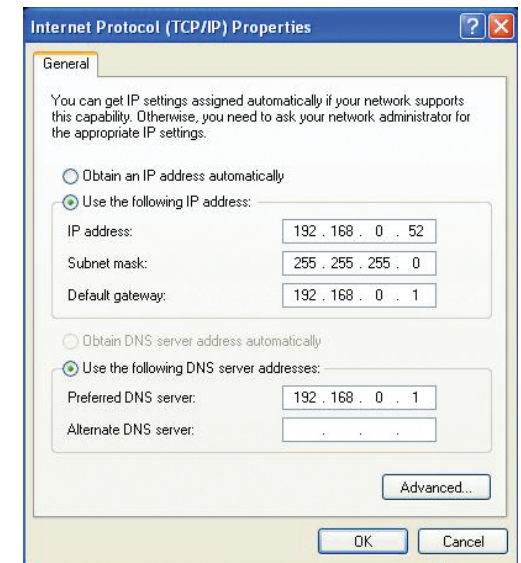
Click **Use the following IP address** and enter an IP address that is on the same subnet as your network or the LAN IP address on your router.

Example: If the router's LAN IP address is 192.168.0.1, make your IP address 192.168.0.X where X is a number between 2 and 99. Make sure that the number you choose is not in use on the network. Set Default Gateway the same as the LAN IP address of your router (192.168.0.1).

Set Primary DNS the same as the LAN IP address of your router (192.168.0.1). The Secondary DNS is not needed or you may enter a DNS server from your ISP.

Step 5

Click **OK** twice to save your settings.



Technical Specifications

Protocol

IETF SIP (RFC3261)

Network Interface

RJ45 x 2, 10/100BaseT

LCD Display

2 x 16 characters

Key Pad

25 Keys

Call Features

- Call Hold
- Call Mute
- Call Retrieve
- Call Transfer
- Call Waiting
- Call Forward (Busy / No Answer / Unconditional)
- Caller ID Display
- Anonymous Call
- Anonymous Call Blocking
- In band DTMF / Out-of-band DTMF
- (RFC2833) / SIP INFO
- Message Waiting Indicator
- 3-way Conference
- Redial

Codec

- G711u-law
- G711a-law
- G729a/b

Phone Functions

- Multi-user (4 SIP Accounts)
- Speakerphone Communication
- Pre-dial Before Sending
- Handset / Speakerphone Volume Adjustment
- Speed-dial (10 records)
- Phonebook (200 records)
- Call History (Incoming / Outgoing / Missed calls)

Security

- HTTP 1.1 Basic/Digest Authentication for Web Setup
- MD5 for SIP Authentication (RFC 2069/ RFC 2617)

Dial Methods

- Direct IP Call without SIP Registration
- Dial Registered Number via SIP Server
- Dial URI from Phonebook / Speed-dial

Voice Quality

- VAD (Voice Activity Detection)
- CNG (Comfort Noise Generation)
- AEC (Acoustic Echo Cancellation)
- G168
- Jitter buffer

QoS

- ToS field
- IEEE 802.1q VLAN

Tone

- DTMF
- Ring Tone, 4 Selectable and 4 Editable Tones
- Ring Back Tone (Local and Remote)
- Dial Tone
- Busy Tone

IP Assignment

- Static IP
- DHCP
- PPPoE

NAT Traversal

- UPnP
- STUN

TCP/IP

IP/TCP/UDP/DHCP/RTP/RTCP/
ICMP/HTTP/NTP/TFTP/DNS

Configuration

- Key & LCD Configuration
- Web browser Configuration
- Auto/Manual Provisioning System

Firmware Upgrade

- TFTP
- Auto Provisioning System

Power

- 5V, 2.0A

Environmental

- Operating Temperature: 32°F to 104°F
- Storage Temperature: -4°F to 140°F
- Humidity: 5% to 90%

Certifications

- FCC Part 15 Class B
- CE Class B

Physical

- Item Dimensions (WxHxD): 7.9" x 3.2" x 7.9"
- Packaging Dimensions (WxHxD): 8.2" x 3.8" x 10.8"
- Item Weight: 1.61 lbs
- Packaging Weight: 3.48 lbs

Warranty*

- 1-Year Limited

*1-Year Limited Warranty available only in the USA and Canada.

©2007-2008. D-Link Corporation/D-Link Systems, Inc. All rights reserved. D-Link, the D-Link logo, and the VoiceCenter logo are trademarks or registered trademarks of D-Link Corporation or its subsidiaries in the United States and/or other countries. Microsoft Response Point is either a registered trademark or trademark of Microsoft Corporation in the United States and/or other countries. Windows is a registered trademark of Microsoft Corporation in the United States and other countries. Other trademarks or registered trademarks are the property of their respective owners. The example companies, organizations, products, domain names, e-mail addresses, logos, people, places, and events depicted herein are fictitious. No association with any real company, organization, product, domain name, e-mail address, logo, person, places or events is intended or should be inferred.

Contacting Technical Support

U.S. and Canadian customers can contact D-Link technical support through our web site or by phone.

Before you contact technical support, please have the following ready:

- Model number of the product (e.g. DPH-125MS)
- Hardware Revision (located on the label on the bottom of the phone (e.g. rev A1))
- Serial Number (s/n number located on the label on the bottom of the phone).

Please check the D-Link support site below for the latest product information including FAQ's, known issues, and other product-related updates.

For customers within the United States:

Phone Support:

(888) 404-6262

Internet Support:

<http://support.dlink.com>

For customers within Canada:

Phone Support:

(888) 404-6262

Internet Support:

<http://support.dlink.com>

Warranty

Subject to the terms and conditions set forth herein, D-Link Systems, Inc. (“D-Link”) provides this Limited Warranty:

- Only to the person or entity that originally purchased the product from D-Link or its authorized reseller or distributor, and
- Only for products purchased and delivered within the fifty states of the United States, the District of Columbia, U.S. Possessions or Protectorates, U.S. Military Installations, or addresses with an APO or FPO.

Limited Warranty:

D-Link warrants that the hardware portion of the D-Link product described below (“Hardware”) will be free from material defects in workmanship and materials under normal use from the date of original retail purchase of the product, for the period set forth below (“Warranty Period”), except as otherwise stated herein.

- Hardware (excluding power supplies and fans): One (1) year
- Power supplies and fans: One (1) year
- Spare parts and spare kits: Ninety (90) days

The customer’s sole and exclusive remedy and the entire liability of D-Link and its suppliers under this Limited Warranty will be, at D-Link’s option, to repair or replace the defective Hardware during the Warranty Period at no charge to the original owner or to refund the actual purchase price paid. Any repair or replacement will be rendered by D-Link at an Authorized D-Link Service Office. The replacement hardware need not be new or have an identical make, model or part. D-Link may, at its option, replace the defective Hardware or any part thereof with any reconditioned product that D-Link reasonably determines is substantially equivalent (or superior) in all material respects to the defective Hardware. Repaired or replacement hardware will be warranted for the remainder of the original Warranty Period or ninety (90) days, whichever is longer, and is subject to the same limitations and exclusions. If a material defect is incapable of correction, or if D-Link determines that it is not practical to repair or replace the defective Hardware, the actual price paid by the original purchaser for the defective Hardware will be refunded by D-Link upon return to D-Link of the defective Hardware. All Hardware or part thereof that is replaced by D-Link, or for which the purchase price is refunded, shall become the property of D-Link upon replacement or refund.

Limited Software Warranty:

D-Link warrants that the software portion of the product (“Software”) will substantially conform to D-Link’s then current functional specifications for the Software, as set forth in the applicable documentation, from the date of original retail purchase of the Software for a period of ninety (90) days (“Software Warranty Period”), provided that the Software is properly installed on approved hardware and operated as contemplated in its documentation. D-Link further warrants that, during the Software Warranty Period, the magnetic media on which D-Link delivers the Software will be free of physical defects. The customer’s sole and exclusive remedy and the entire liability of D-Link and its suppliers under this Limited Warranty will be, at D-Link’s option, to replace the non-conforming Software (or defective media) with software that substantially conforms to D-Link’s functional specifications for the Software or to refund the portion of the actual purchase price paid that is attributable to the Software. Except as otherwise agreed by DLink in writing, the replacement Software is provided only to the original licensee, and is subject to the terms and conditions of the license granted by D-Link for the Software. Replacement Software will be warranted for the remainder of the original Warranty Period and is subject to the same limitations and exclusions. If a material non-conformance is incapable of correction, or if D-Link determines in its sole discretion that it is not practical to replace the non-conforming Software, the price paid by the original licensee for the non-conforming Software will be refunded by D-Link; provided that the non-conforming Software (and all copies thereof) is first returned to D-Link. The license granted respecting any Software for which a refund is given automatically terminates.

Non-Applicability of Warranty:

The Limited Warranty provided hereunder for Hardware and Software portions of D-Link’s products will not be applied to and does not cover any refurbished product and any product purchased through the inventory clearance or liquidation sale or other sales in which D-Link, the sellers, or the liquidators expressly disclaim their warranty obligation pertaining to the product and in that case, the product is being sold “As-Is” without any warranty whatsoever including, without limitation, the Limited Warranty as described herein, notwithstanding anything stated herein to the contrary.

Submitting A Claim:

The customer shall return the product to the original purchase point based on its return policy. In case the return policy period has expired and the product is within warranty, the customer shall submit a claim to D-Link as outlined below:

- The customer must submit with the product as part of the claim a written description of the Hardware defect or Software nonconformance in sufficient detail to allow DLink to confirm the same, along with proof of purchase of the product (such as a copy of the dated purchase invoice for the product) if the product is not registered.
- The customer must obtain a Case ID Number from D-Link Technical Support at 1-888-404-6262, who will attempt to assist the customer in resolving any suspected defects with the product. If the product is considered defective, the customer must obtain a Return Material Authorization (“RMA”) number by completing the RMA form and entering the assigned Case ID Number at <https://rma.dlink.com/>.

- After an RMA number is issued, the defective product must be packaged securely in the original or other suitable shipping package to ensure that it will not be damaged in transit, and the RMA number must be prominently marked on the outside of the package. Do not include any manuals or accessories in the shipping package. DLink will only replace the defective portion of the product and will not ship back any accessories.
- The customer is responsible for all in-bound shipping charges to D-Link. No Cash on Delivery (“COD”) is allowed. Products sent COD will either be rejected by D-Link or become the property of D-Link. Products shall be fully insured by the customer and shipped to D-Link Systems, Inc., 17595 Mt. Herrmann, Fountain Valley, CA 92708. D-Link will not be held responsible for any packages that are lost in transit to D-Link. The repaired or replaced packages will be shipped to the customer via UPS Ground or any common carrier selected by D-Link. Return shipping charges shall be prepaid by D-Link if you use an address in the United States, otherwise we will ship the product to you freight collect. Expedited shipping is available upon request and provided shipping charges are prepaid by the customer. D-Link may reject or return any product that is not packaged and shipped in strict compliance with the foregoing requirements, or for which an RMA number is not visible from the outside of the package. The product owner agrees to pay D-Link’s reasonable handling and return shipping charges for any product that is not packaged and shipped in accordance with the foregoing requirements, or that is determined by D-Link not to be defective or non-conforming.

What Is Not Covered:

The Limited Warranty provided herein by D-Link does not cover:

Products that, in D-Link’s judgment, have been subjected to abuse, accident, alteration, modification, tampering, negligence, misuse, faulty installation, lack of reasonable care, repair or service in any way that is not contemplated in the documentation for the product, or if the model or serial number has been altered, tampered with, defaced or removed; Initial installation, installation and removal of the product for repair, and shipping costs; Operational adjustments covered in the operating manual for the product, and normal maintenance; Damage that occurs in shipment, due to act of God, failures due to power surge, and cosmetic damage; Any hardware, software, firmware or other products or services provided by anyone other than D-Link; and Products that have been purchased from inventory clearance or liquidation sales or other sales in which D-Link, the sellers, or the liquidators expressly disclaim their warranty obligation pertaining to the product.

While necessary maintenance or repairs on your Product can be performed by any company, we recommend that you use only an Authorized D-Link Service Office. Improper or incorrectly performed maintenance or repair voids this Limited Warranty.

Disclaimer of Other Warranties:

EXCEPT FOR THE LIMITED WARRANTY SPECIFIED HEREIN, THE PRODUCT IS PROVIDED “AS-IS” WITHOUT ANY WARRANTY OF ANY KIND WHATSOEVER INCLUDING, WITHOUT LIMITATION, ANY WARRANTY OF MERCHANTABILITY, FITNESS FOR A PARTICULAR PURPOSE AND NONINFRINGEMENT.

IF ANY IMPLIED WARRANTY CANNOT BE DISCLAIMED IN ANY TERRITORY WHERE A PRODUCT IS SOLD, THE DURATION OF SUCH IMPLIED WARRANTY SHALL BE LIMITED TO THE DURATION OF THE APPLICABLE WARRANTY PERIOD SET FORTH ABOVE. EXCEPT AS EXPRESSLY COVERED UNDER THE LIMITED WARRANTY PROVIDED HEREIN, THE ENTIRE RISK AS TO THE QUALITY, SELECTION AND PERFORMANCE OF THE PRODUCT IS WITH THE PURCHASER OF THE PRODUCT.

Limitation of Liability:

TO THE MAXIMUM EXTENT PERMITTED BY LAW, D-LINK IS NOT LIABLE UNDER ANY CONTRACT, NEGLIGENCE, STRICT LIABILITY OR OTHER LEGAL OR EQUITABLE THEORY FOR ANY LOSS OF USE OF THE PRODUCT, INCONVENIENCE OR DAMAGES OF ANY CHARACTER, WHETHER DIRECT, SPECIAL, INCIDENTAL OR CONSEQUENTIAL (INCLUDING, BUT NOT LIMITED TO, DAMAGES FOR LOSS OF GOODWILL, LOSS OF REVENUE OR PROFIT, WORK STOPPAGE, COMPUTER FAILURE OR MALFUNCTION, FAILURE OF OTHER EQUIPMENT OR COMPUTER PROGRAMS TO WHICH D-LINK'S PRODUCT IS CONNECTED WITH, LOSS OF INFORMATION OR DATA CONTAINED IN, STORED ON, OR INTEGRATED WITH ANY PRODUCT RETURNED TO D-LINK FOR WARRANTY SERVICE) RESULTING FROM THE USE OF THE PRODUCT, RELATING TO WARRANTY SERVICE, OR ARISING OUT OF ANY BREACH OF THIS LIMITED WARRANTY, EVEN IF D-LINK HAS BEEN ADVISED OF THE POSSIBILITY OF SUCH DAMAGES. THE SOLE REMEDY FOR A BREACH OF THE FOREGOING LIMITED WARRANTY IS REPAIR, REPLACEMENT OR REFUND OF THE DEFECTIVE OR NONCONFORMING PRODUCT. THE MAXIMUM LIABILITY OF D-LINK UNDER THIS WARRANTY IS LIMITED TO THE PURCHASE PRICE OF THE PRODUCT COVERED BY THE WARRANTY. THE FOREGOING EXPRESS WRITTEN WARRANTIES AND REMEDIES ARE EXCLUSIVE AND ARE IN LIEU OF ANY OTHER WARRANTIES OR REMEDIES, EXPRESS, IMPLIED OR STATUTORY.

Governing Law:

This Limited Warranty shall be governed by the laws of the State of California. Some states do not allow exclusion or limitation of incidental or consequential damages, or limitations on how long an implied warranty lasts, so the foregoing limitations and exclusions may not apply. This Limited Warranty provides specific legal rights and you may also have other rights which vary from state to state.

Trademarks:

D-Link is a registered trademark of D-Link Corporation/D-Link Systems, Inc. Other trademarks or registered trademarks are the property of their respective owners.

Copyright Statement:

No part of this publication or documentation accompanying this product may be reproduced in any form or by any means or used to make any derivative such as translation, transformation, or adaptation without permission from D-Link Corporation/D-Link Systems, Inc., as stipulated by the United States Copyright Act of 1976 and any amendments thereto. Contents are subject to change without prior notice.

Copyright ©2008 by D-Link Corporation/D-Link Systems, Inc. All rights reserved.

FCC Statement:

This equipment has been tested and found to comply with the limits for a Class B digital device, pursuant to part 15 of the FCC Rules. These limits are designed to provide reasonable protection against harmful interference in a residential installation. This equipment generates, uses, and can radiate radio frequency energy and, if not installed and used in accordance with the instructions, may cause harmful interference to radio communication. However, there is no guarantee that interference will not occur in a particular installation. If this equipment does cause harmful interference to radio or television reception, which can be determined by turning the equipment off and on, the user is encouraged to try to correct the interference by one or more of the following measures:

- Reorient or relocate the receiving antenna.
- Increase the separation between the equipment and receiver.
- Connect the equipment into an outlet on a circuit different from that to which the receiver is connected.
- Consult the dealer or an experienced radio/TV technician for help.

FCC Caution:

Any changes or modifications not expressly approved by the party responsible for compliance could void the user's authority to operate this equipment.

This device complies with Part 15 of the FCC Rules. Operation is subject to the following two conditions:

(1) This device may not cause harmful interference, and (2) this device must accept any interference received, including interference that may cause undesired operation.

IMPORTANT NOTICE:

FCC Radiation Exposure Statement:

This equipment complies with FCC radiation exposure limits set forth for an uncontrolled environment. This equipment should be installed and operated with minimum distance 20cm between the radiator & your body. This transmitter must not be co-located or operating in conjunction with any other antenna or transmitter.

The availability of some specific channels and/or operational frequency bands are country dependent and are firmware programmed at the factory to match the intended destination. The firmware setting is not accessible by the end user.

For detailed warranty information applicable to products purchased outside the United States, please contact the corresponding local D-Link office.

This class B digital apparatus complies with Canada ICE-003

Registration



Product registration is entirely voluntary and failure to complete or return this form will not diminish your warranty rights.

Version 1.2
October 16, 2008