



QUICK INSTALL GUIDE *DPH-125MS*

VERSION 1.2

System Requirements

- Computers with Microsoft® Windows® XP or Windows Vista™ operating systems with an installed Ethernet adapter
- Internet Explorer Version 6.0, Mozilla 1.7.12 (5.0), or Firefox 1.5 and above (for configuration)

Package Contents



D-Link DPH-125MS IP Phone



Manual and QIG on CD



CAT5 Ethernet Cable



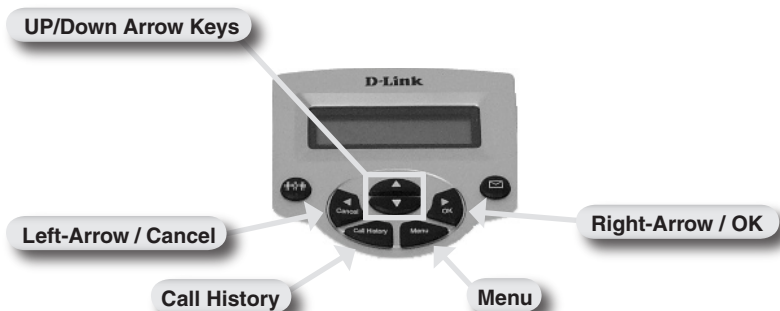
Power Adapter

Note: Using a power supply with a different voltage rating than the one included with the DPH-125MS will cause damage and void the warranty for this product.

If any of the above items are missing, please contact your reseller.

Hardware Overview

Front



Hardware Overview

Rear

PC Port

Used to connect the IP Phone through Ethernet cable to your PC.



LAN Port

Used to connect the IP Phone through Ethernet cable to your Local Area Network.

Power Receptor

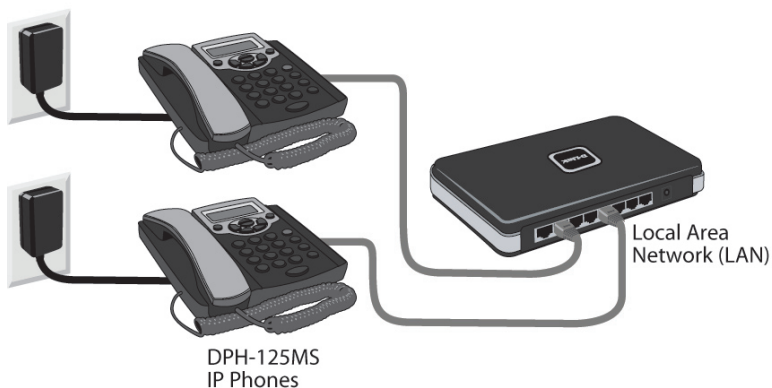
Receptor for the supplied power adapter.

Installation

Connect one end of the Ethernet cable to the LAN port on the IP Phone and connect the other end of the Ethernet cable to your Local Area Network using your hub, or switch.

Plug the power adapter into an AC outlet or power strip and plug the other end into the AC input on the phone. The Power LEDs will light up to indicate proper connection.

When you have connected the IP Phone to your network it should look like the diagram below.



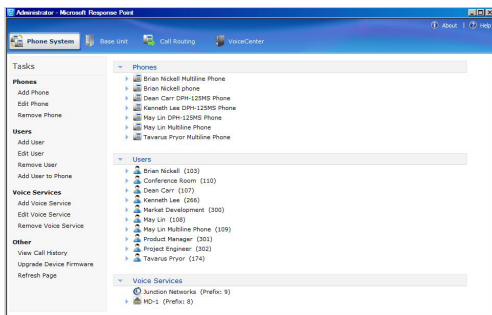
Configure the DPH-125MS IP Phone

Note: Microsoft® Response Point™ Administrator only operates with Windows® XP SP2 or Windows Vista™.

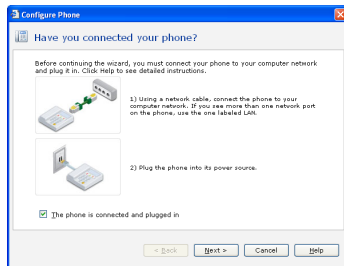
Open Microsoft Response Point Administrator to configure the IP Phone using the Configure Phone Wizard. Use the following steps to configure the IP Phone:

In Microsoft Response Point Administrator, click the **Phone System** tab at the top of the screen if necessary.

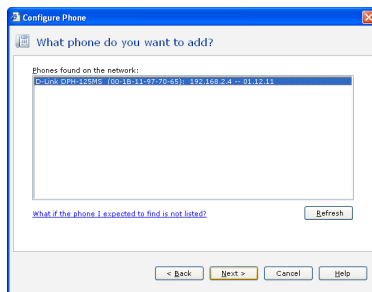
In the **Tasks** panel, under **Phones**, click **Add Phone** to launch the Configure Phone Wizard.



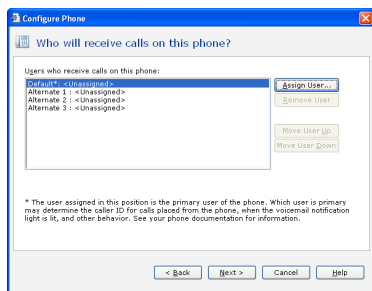
Select the check box confirming the IP Phone is connected and plugged in. Click **Next** to continue.



Select the D-Link DPH-125MS IP Phone you just connected and click **Next** to continue.



For this step, you will add a new user and assign that user to the phone you just configured. Click **Assign User** to open the New User screen.



On the **Identification** tab, in the **User Type** box, select **Person** from the drop down menu if it is not already selected.

In the **Name** boxes, type the first and last name, and optional nicknames or titles of the person who will use this phone. You should specify nicknames and titles if you think callers will use when asking for this user.

In the **Extension number** box, change the extension number if desired and click **OK** to continue.

The 'New User' dialog box has three tabs: 'Identification', 'Vocalmail', and 'Call Forwarding'. The 'Identification' tab is active. It contains the following fields and options:

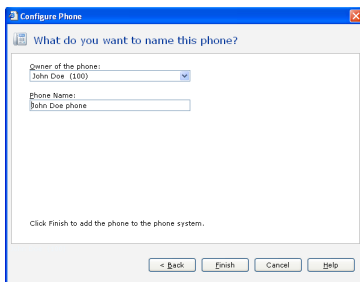
- User type:** A dropdown menu set to 'Person'.
- Text:** A label 'A person with his or her own extension number, such as "Home Valdes" or "Barry Johnson."'.
- Name:** A section with the label 'Type names as you expect callers to say them.' containing:
 - First name:** A text box with 'John'.
 - Last name:** A text box with 'Doe'.
 - Second Name:** A text box.
 - Nickname (optional):** A text box.
 - Title (optional):** A text box.
 - Other title (optional):** A dropdown menu with options 'Dr.', 'Miss', 'Mr.', and 'Mrs.'.
 - Example:** 'Professor'.
- Extension number and password:** A section with:
 - Extension number:** A text box with '100'.
 - Reset Password:** A button.
- Directory listing:** A section with a checked checkbox and the text 'List this user and extension number in the directory accessible by external callers'.
- Buttons:** 'OK', 'Cancel', and 'Help' at the bottom.

You have now assigned the person's name to Line 1 with the extension number you specified. You can assign up to 3 additional users to this phone or click **Next** to continue.

The 'Configure Phone' dialog box has a tab 'Who will receive calls on this phone?'. It contains the following elements:

- Users who receive calls on this phone:** A list box showing:
 - Primary: John Doe (100)
 - Alternate 1: <Unassigned>
 - Alternate 2: <Unassigned>
 - Alternate 3: <Unassigned>
- Buttons:** 'Assign User...', 'Remove User', 'Move User Up', and 'Move User Down'.
- Footnote:** '* The user assigned in this position is the primary user of the phone. Which user is primary may determine the caller ID for calls placed from the phone, when the voicemail notification light is lit, and other behavior. See your phone documentation for information.'
- Buttons:** '< Back', 'Next >', 'Cancel', and 'Help' at the bottom.

The owner and phone name have automatically been created for you. Click **Finish** to continue.



The IP Phone has been successfully added to the phone system. Click **Close** to exit the configuration wizard.



Phone Installation List

Use this list as an aid in adding the DHP-125MS IP Phone and users to Microsoft® Response Point™ Administrator. Take this list to each computer where a DPH-125MS IP Phone is located and record the last 4 digits of the **MAC** address. You can find the MAC address by pressing the **MENU** key and then press the **UP Arrow** key three times. Write down the user name to be assigned to each phone with the corresponding MAC address.

[illegible]

Technical Support

D-Link's website contains the latest user documentation and software updates for D-Link products.

U.S. and Canadian customers can contact D-Link Technical Support through our website or by phone.

United States

Telephone

(888) 404-6262

World Wide Web

<http://support.dlink.com>

Canada

Telephone

(888) 404-6262

World Wide Web

<http://support.dlink.com>



Version 1.2

September 24, 2008

©2008 D-Link Corporation/D-Link Systems, Inc. All rights reserved. D-Link, the D-Link logo, and the VoiceCenter logo are trademarks or registered trademarks of D-Link Corporation or its subsidiaries in the United States and/or other countries. Microsoft Response Point is either a registered trademark or trademark of Microsoft Corporation in the United States and/or other countries. Windows is a registered trademark of Microsoft Corporation in the United States and other countries. Other trademarks or registered trademarks are the property of their respective owners. The example companies, organizations, products, domain names, e-mail addresses, logos, people, places, and events depicted herein are fictitious. No association with any real company, organization, product, domain name, e-mail address, logo, person, places or events is intended or should be inferred.