

# D-Link Quick Installation Guide

This product can be used with:  
Windows XP, Me, 2000,  
98 Second Edition



**DSB-C110**  
D-Link VisualStream™  
100K Pixel USB PC Camera

## Before You Begin

You must have at least the following:

- Windows XP/Me/2000/98Second Edition
- One available USB Port
- CD-ROM Drive

## Check Your Package Contents

These are the items included with your purchase:

If any of the below items are missing, please contact your reseller.



• **DSB-C110 USB PC Camera**



• **CD-ROM**  
(containing Drivers, PDF Installation Guide,  
PDF Manual, and Warranty)

# 1 Installing the Drivers



Run the Driver CD before you install the DSB-C110 PC Camera. The Driver CD contains an installation program that simplifies your installation process.

Turn on your computer and Insert the D-Link VisualStream™ DSB-C110 Driver CD in the CD-ROM drive.

Click **Install D-Link CIF Webcam**



If the Autorun screen does not automatically start, click on **Start > Run**, enter "**D:\Autorun.exe**" and click **OK**. "**D**" represents the letter of your CD-ROM drive. Replace it if your CD-ROM drive is a different letter.

Choose **Install D-Link CIF WebCam For Windows** for your Operating System

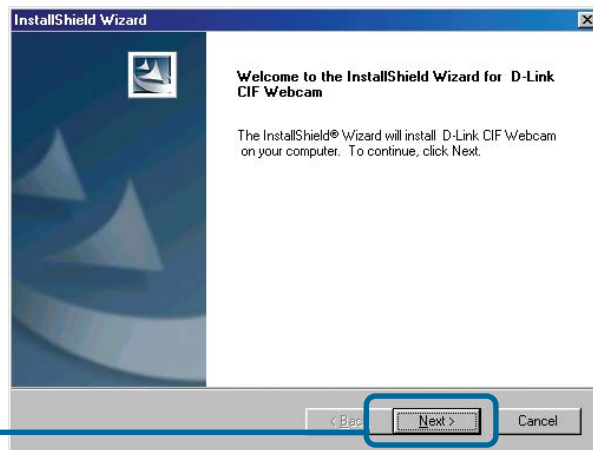


# 1 Installing the Drivers *(continued)*

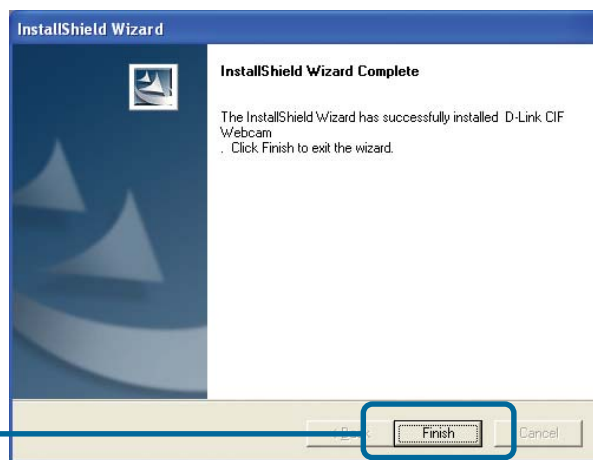
You may see this screen during the installation. Please select the appropriate power frequency corresponding to your geographic area.



Click **Next**



Click **Finish**

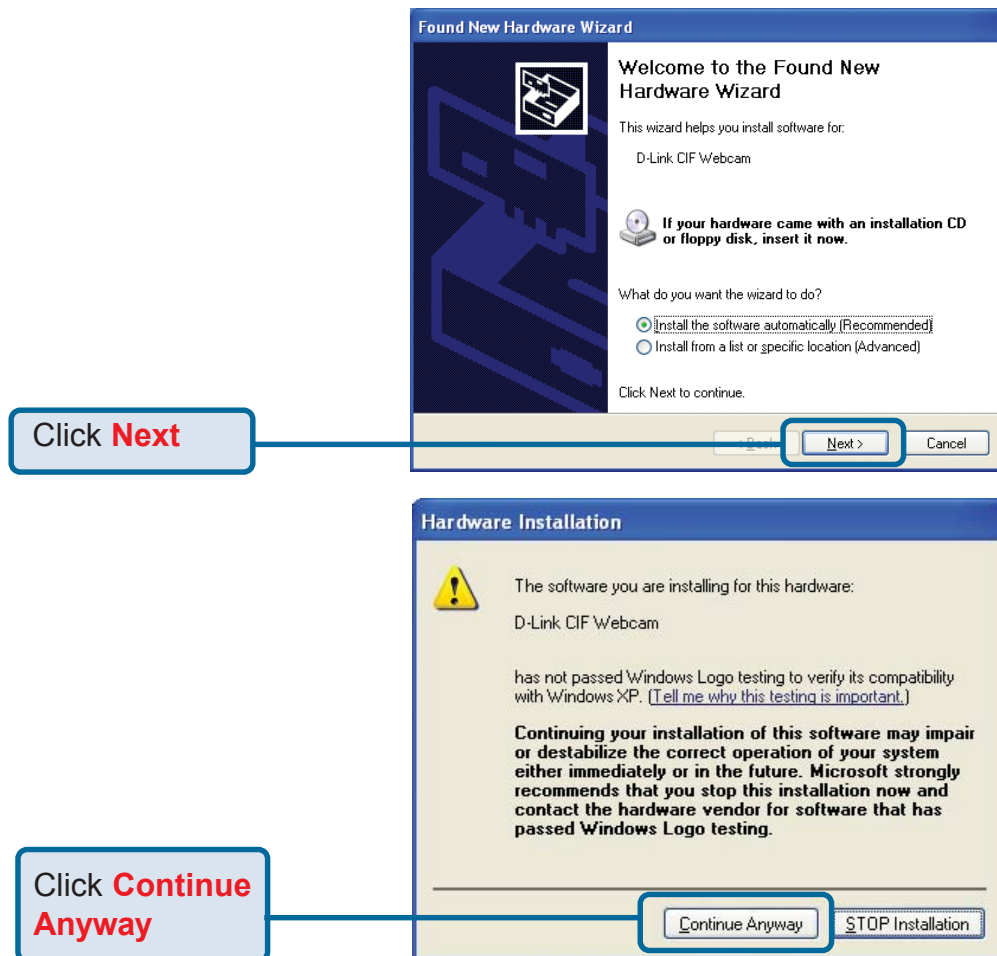


## 2 Connect the DSB-C110 To Your Windows-based Computer

With your computer ON, **Connect the PC Camera** to an available USB port on your USB host adapter or USB hub. (You may also use a USB extension cable for easy access)

## 3 Completing the Driver Installation

### Windows XP Users



# 3

## Completing the Driver Installation (continued)

### Windows XP Users



### Windows 2000 & Me Users

The DSB-C110 driver installation will proceed automatically for Windows 2000 & Me users.

## 3 Completing the Driver Installation (continued)

### Windows 98SE Users

Click **Next**



Click **Next**



Click **Next**



### 3 Completing the Driver Installation (continued)

#### Windows 98SE Users

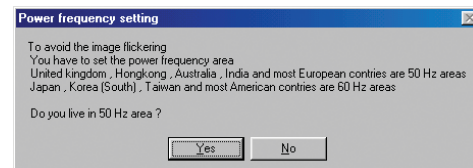
Click **Next**



Click **Finish**



You may see this screen during the installation. Please select the appropriate power frequency corresponding to your geographic area.



### 4 The Installation is Complete!

Once properly installed, you are ready to start immediately capturing images and creating video with the DSB-C110.

**Please refer to the DSB-C110 Manual on the CD included with this product for information on how to install and use the ArcSoft VideoImpression and ArcSoft PhotoImpression software.**

## Technical Support

You can find software updates and user documentation on the D-Link website.

D-Link provides free technical support for customers within the United States and within Canada for the duration of the warranty period on this product.

U.S. and Canadian customers can contact D-Link technical support through our website, or by phone.

### Tech Support for customers within the United States:

***D-Link Technical Support over the Telephone:***

(877) 453-5465

24 hours a day, seven days a week.

***D-Link Technical Support over the Internet:***

<http://support.dlink.com>

[email:support@dlink.com](mailto:support@dlink.com)

### Tech Support for customers within Canada:

***D-Link Technical Support over the Telephone:***

(800) 361-5265

Monday to Friday 8:30am to 9:00pm EST

***D-Link Technical Support over the Internet:***

<http://support.dlink.ca>

[email:support@dlink.ca](mailto:support@dlink.ca)

