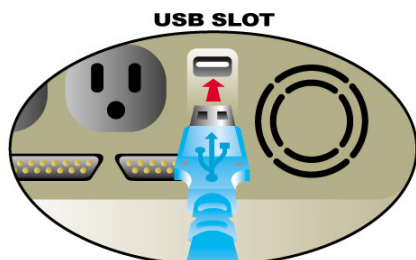


D-Link DSC-350 Quick Start Guide

Windows 98 Driver Installation.

1. Connect the DSC-350 Dual Mode Camera to your computer using the USB cable provided.



2. Windows will detect the Camera and ask you for the drivers. Insert your Windows installation CD in the CD-ROM and the DSC-350 driver diskette into the floppy drive. Press the **Next** button.
3. Select **Search for the best driver for your device**. Press **Next**.

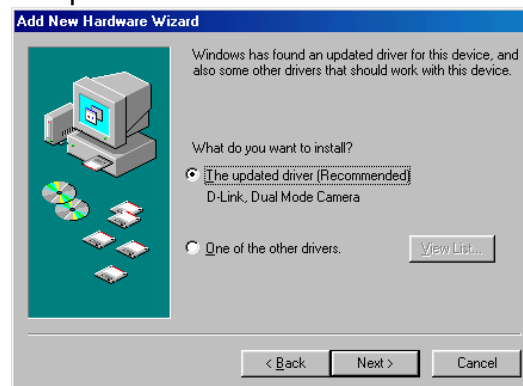


4. Select **Floppy disk drives** as the location to search for the drivers and press **Next**.



5. Select **The updated driver** and press **Next**. If Windows prompts you for a file named Minibulk.sys, type A: in the file location box

and press **OK**.



6. Press the **Next** button.



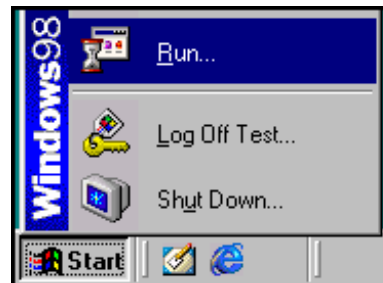
7. Press the **Finish** button.



8. Windows will prompt you for two more drivers. Please repeat steps 2 through 7 for each of the drivers.

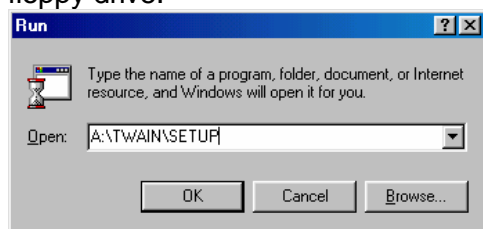
Install the Twain Driver:

9. After the device drivers are loaded, you must install the Twain Driver. Press the **Start** button and click **Run...**



Continue on next page...

10. Make sure the driver disk is in the floppy drive and type **A:\twain\setup** in the box.
Note: Replace **A** with the letter of your floppy drive.



11. Press **Start**. After it finishes, press **OK**.



Install MGI Software:

12. Install the MGI Photosuite and MGI Videowave software by inserting the Installation CD into your CD-ROM. The installation will run automatically. Follow the onscreen instructions to finish the installation.

To:

Do This:

Look For:

Turn on Camera

Hold Mode button for 3 seconds then release.

Turn Off Camera

Hold Mode button for 3 seconds then release.

Change Resolution

While pressing the Mode button, press and release the Shutter button.

Delete Last Picture

Press the Delete button once then press the Shutter button.

Delete All Pictures

Press the Delete button twice then press the Shutter button.

Set Single Shot

While pressing the Mode button, press and release the Shutter button until single shot mode is selected.

Set Multi-Shot

While pressing the Mode button, press and release the Shutter button until multi-shot mode is selected.

Set Video

While pressing the Mode button, press and release the Shutter button until video mode is selected.

Set Single Shot with Timer

While pressing the Mode button, press and release the Shutter button until single shot with timer mode is selected.

Set Multi-Shot with Timer

While pressing the Mode button, press and release the Shutter button until multi-shot with timer mode is selected.

View % Memory Remaining

Press and hold the Delete button for 3 seconds, then release.

S **Hi** **SHi**
320x240 640x480 1024x768



ALL



88
REM%