

D-Link[®]

Quick Installation Guide

This product can be setup using any current Web browser, i.e., Internet Explorer 6 or Netscape Navigator 6.2.3 or above



DSL-504T

ADSL Router

Before You Begin:

Please read and make sure you understand all the prerequisites for proper installation of your new ADSL Router. Have all the necessary information and equipment on hand before beginning the installation.

Check Your Package Contents



DSL-504T ADSL Router



CD-ROM with Manual



Ethernet Cable



Telephone Cord



12V AC, 1.2A Power Adapter



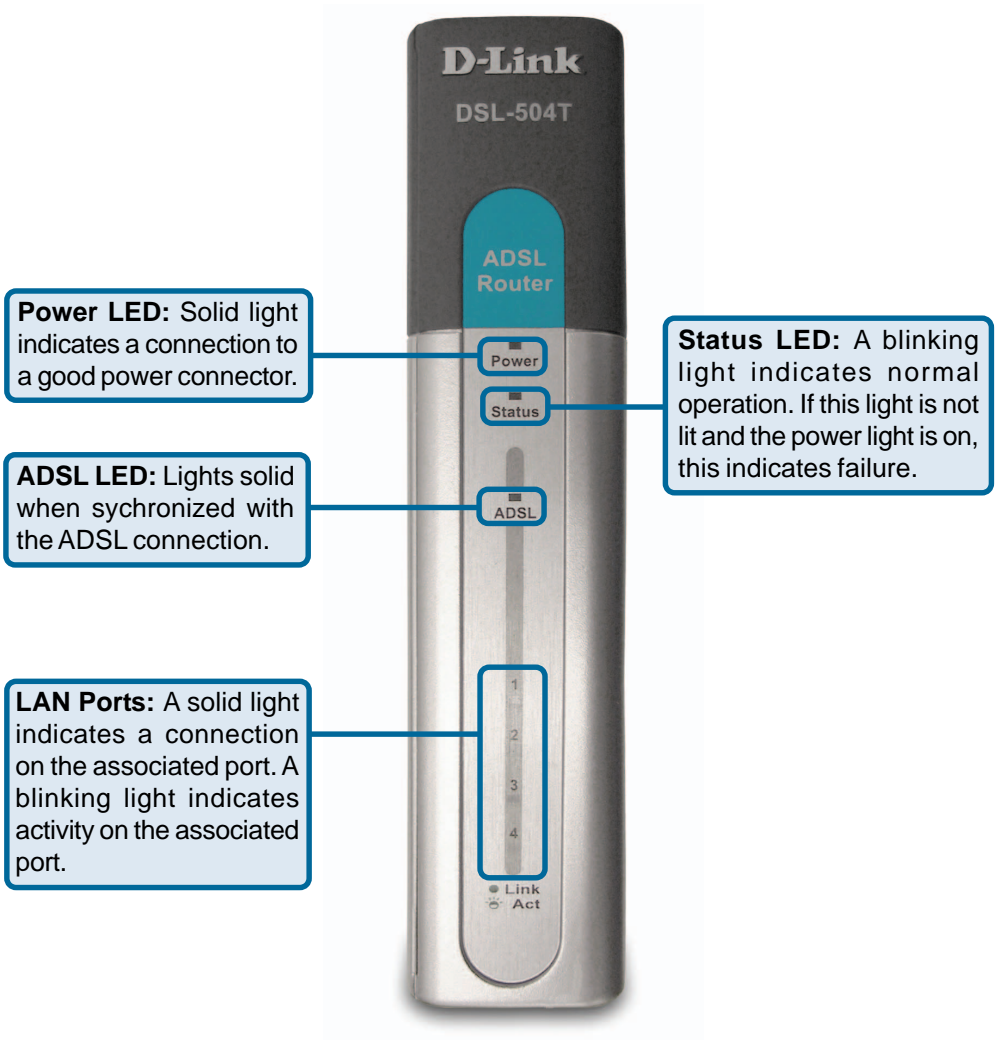
Using a power supply with a different voltage rating will damage this product and void its warranty.

If any of the above items are missing, please contact your reseller.

1

Hardware Overview

Front Panel



1

Hardware Overview (continued)

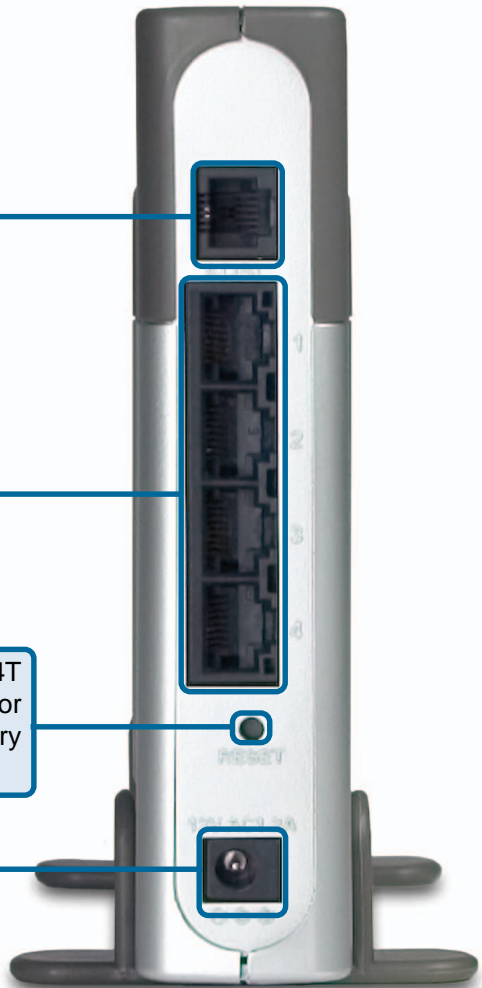
Rear Panel

ADSL Port: Connects to your telephone jack using a standard telephone cord.

LAN Ports: Your computers connect here using standard Ethernet cables.

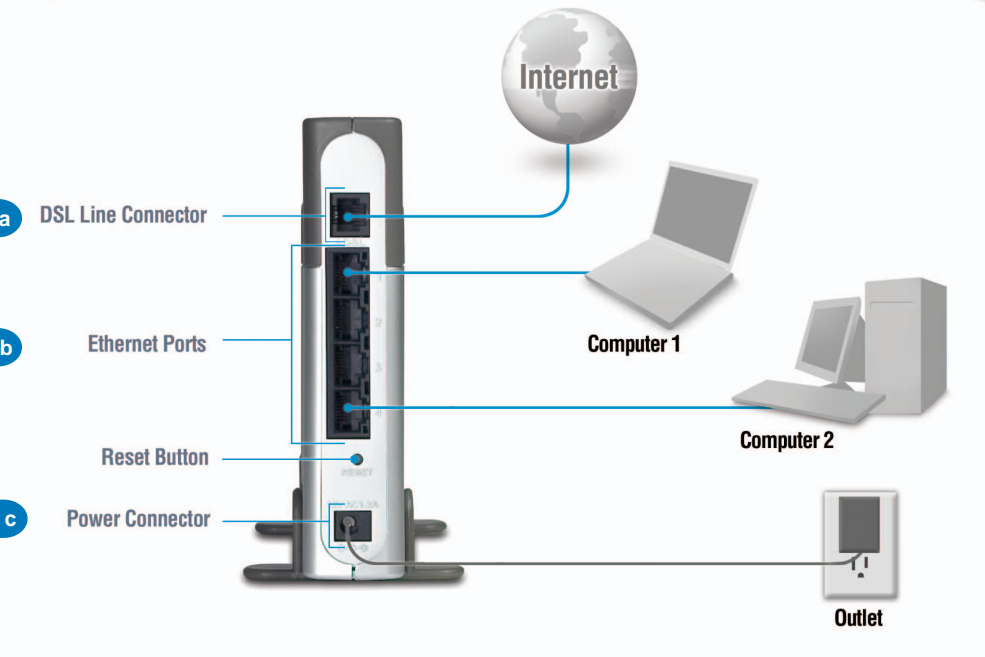
Reset Button: Resets the DSL-504T to the factory default settings. Hold for seven seconds for the unit to factory reset.

Power Receptor: The AC Power Adapter connects here.



2

Hardware Installation



Please see the following page for an explanation of steps a-c, shown above.

2

Hardware Installation (continued)

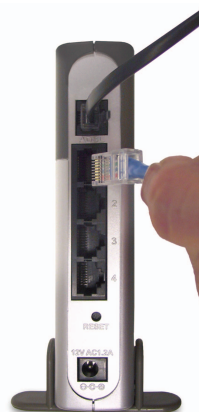
Step a

Connect the telephone cord from your phone jack to the ADSL port on the DSL-504T.



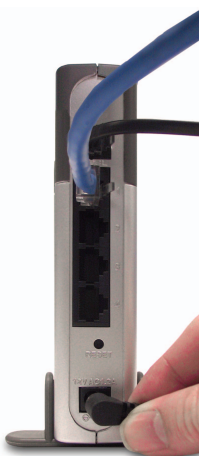
Step b

Connect an Ethernet cable from your computer to a LAN port on the DSL-504T.



Step c

Connect the power adapter to the power connector on the DSL-504T and the other end to a known good power source.



3

Using the Setup Wizard

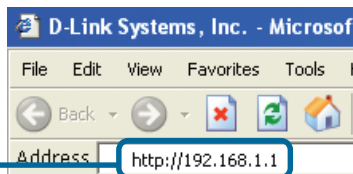
Step a

Launch your Web browser
(a shortcut is typically found on your desktop).



Step b

Type **http://192.168.1.1** into the URL address box and press the **Enter** or **Return** key.



Step c

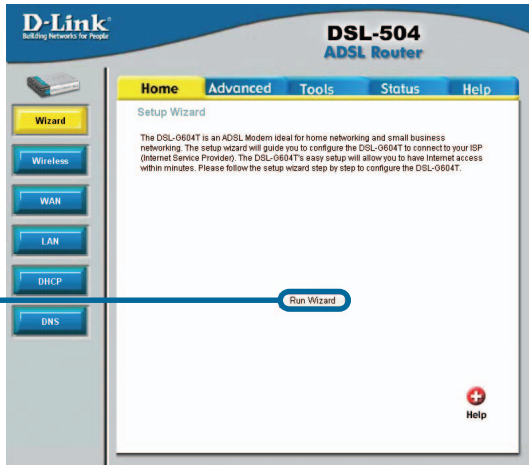
Admin is the default User Name and Password. Type **admin** into the User name and Password fields.



Click **OK**

Step d

Click **Run Wizard**

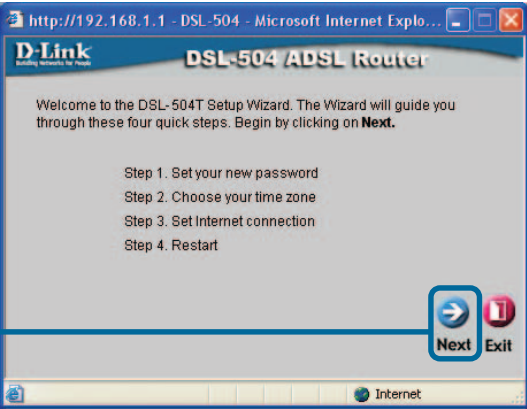


3

Using the Setup Wizard (continued)

Step e

Click **Next**



Step f

This screen allows you to enter a new password for the admin account. This password is used to log into the web-based management interface.

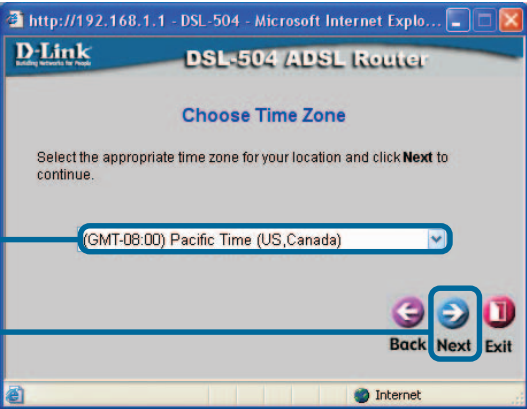
Click **Next**



Step g

Select your Time Zone

Click **Next**



3

Using the Setup Wizard (continued)

You will need to select the Internet Connection Type. If you are unsure which type of Internet Connection you have, please contact your Internet Service Provider. There are four connection modes and settings vary depending on the connection type.

1. Dynamic IP Address - see **Step h1** **Dynamic IP Address** on page 8.
2. Static IP Address - see **Step h2** **Static IP Address** on page 9.
3. PPPoE/PPPoA - see **Step h3** **PPPoE/PPPoA** on page 9.
4. Bridge Mode - see **Step h4** **Bridge Mode** on page 10.

A checklist of necessary settings is provided in the **Appendix**. Contact your Internet Service Provider to obtain the necessary details.

Step h

Select your **Connection Type** and proceed to step h1, h2, h3, or h4 depending upon your connection type.

http://192.168.1.1 - DSL-504 - Microsoft Internet Explo...

D-Link
Building Networks the People's Way

DSL-504 ADSL Router

Select Internet Connection Type (WAN)

Select the connection type to connect to your ISP. Click **Next** to continue.

☒ Dynamic IP Address
☐ Static IP Address
☐ PPPoE/PPPoA
☐ Bridge Mode

Choose this option to obtain a IP address automatically from your ISP.

Choose this option to set static IP information provided to you by your ISP.

Choose this option if your ISP uses PPPoE/PPPoA. (For most DSL users)

Choose this option if your ISP uses Bridge Mode.

Back Next Exit

Click **Next**

Step h1

Dynamic IP Address

The DSL-504T defaults to the most commonly used values in the United States.

Note: If the MAC address does not appear, please refer to the User Manual on the CD-ROM.

Click **Clone MAC Address**

Click **Next**

http://192.168.1.1 - DSL-504 - Microsoft Internet Explo...

D-Link
Building Networks the People's Way

DSL-504 ADSL Router

Set Dynamic IP Address

The **Clone MAC Address** is used to copy the MAC address of your Ethernet adapter to the DSL-504. Click **Next** to continue.

VPI: 0
 VCI: 35
 Connection Type: 1483 Bridged IP LLC
 Cloned MAC Address: 00114a235c12

Clone MAC Address

Back Next Exit

Click **Clone MAC Address**

Click **Next**

3

Using the Setup Wizard (continued)

Step h2

Static IP Address

The DSL-504T defaults to the most commonly used values in the United States. The IP address information on the right is only shown as an example of the format that you will use.

Click **Next**

http://192.168.1.1 - DSL-504 - Microsoft Internet Explo...

D-Link
Building Networks for People

DSL-504 ADSL Router

Set Static IP Address

Enter the static IP information provided to you by your ISP. Click **Next** to continue.

VPI: 0

VCI: 35

IP Address:

Subnet Mask:

ISP Gateway Address:

Primary DNS Address:

Secondary DNS Address:

Connection Type: IPoA

1483 Bridged IP LLC

1483 Bridged IP VC-Mux

1483 Routed IP LLC

1483 Routed IP VC-Mux

IPoA

Back Next Exit

Done Internet

Step h3

PPPoE/PPPoA

The DSL-504T defaults to the most commonly used values in the United States. Only modify these settings if you are sure they need to be changed. The User Name and Password will be unique to your Internet account.

If you forget your account information, please contact your Internet Service Provider.

Click **Next**

http://192.168.1.1 - DSL-504 - Microsoft Internet Explo...

D-Link
Building Networks for People

DSL-504 ADSL Router

Set PPPoE / PPPoA

Enter the PPPoE/PPPoA information provided to you by your ISP. Click **Next** to continue.

User Name: guest

Password:

VPI: 0

VCI: 35

Connection Type: PPPoE LLC

Back Next Exit

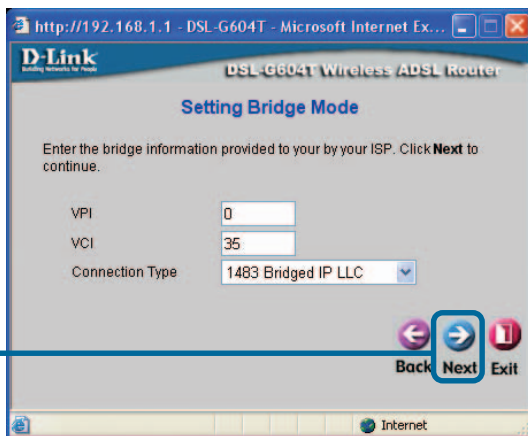
3

Using the Setup Wizard (continued)

Step h4

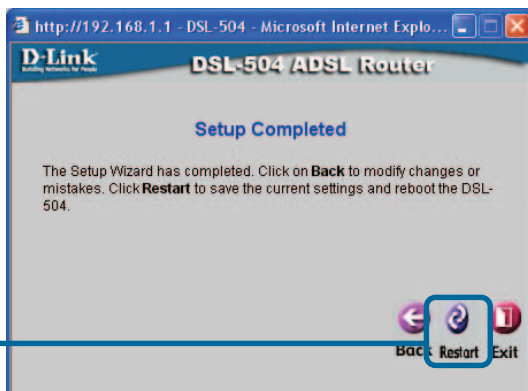
Bridge Mode

Click **Next**



Step i

Click **Restart**



Step j

Configuration is complete! Type in a URL such as **www.dlink.com** to test your connection.



Appendix - Settings Checklist

Your ISP has provided you one of the four methods listed on the right for connecting to the Internet. You may need to contact them to find out which method you are using and fill in the appropriate details.

Step H1 - Dynamic IP Address

VPI:_____

VCI:_____

Connection Type:

☐ 1483 Bridged IP LLC

☐ 1483 Bridged IP VC-Mux

Step H2 - Static IP Address

VPI:_____

VCI:_____

IP Address:_____

Subnet Mask:_____

ISP Gateway Address:_____

Primary DNS:_____

Secondary DNS:_____

Connection Type:

☐ 1483 Bridged IP LLC

☐ 1483 Bridged IP VC-Mux

☐ 1483 Routed IP LLC

☐ 1483 Routed IP VC-Mux

☐ IPoA

Step H3 - PPPoE/PPPoA

User Name: _____

Password: _____

VPI:_____

VCI:_____

Connection Type:

☐ PPPoE LLC

☐ PPPoA LLC

☐ PPPoA VC-Mux

Step H4 - Bridged Mode

VPI:_____

VCI:_____

Connection Type:

☐ 1483 Bridged IP LLC

☐ 1483 Bridged IP VC-Mux

Technical Support

You can find software updates and user documentation on the D-Link website.

D-Link provides free technical support for customers within the United States and within Canada for the duration of the warranty period on this product.

U.S. and Canadian customers can contact D-Link technical support through our website, or by phone.

Tech Support for customers within the United States:

D-Link Technical Support over the Telephone:

(877) 453-5465

24 hours a day, seven days a week

D-Link Technical Support over the Internet:

<http://support.dlink.com>

[email:support@dlink.com](mailto:support@dlink.com)

Tech Support for customers within Canada:

D-Link Technical Support over the Telephone:

(800) 361-5265

Monday to Friday 7:30am to 12:00am EST

D-Link Technical Support over the Internet:

<http://support.dlink.ca>

[email:support@dlink.ca](mailto:support@dlink.ca)

