

**DSP-W320****Outdoor Wi-Fi Smart Plug****User Manual**

---

# Manual Overview

D-Link reserves the right to revise this publication and to make changes in the content hereof without obligation to notify any person or organization of such revisions or changes. Information in this document may become obsolete as our services and websites develop and change. Please refer to the [www.mydlink.com](http://www.mydlink.com) website for the most current information.

## Manual Revisions

Revision	Date	Description
1.00	August 15, 2019	Initial release

## Trademarks

D-Link and the D-Link logo are trademarks or registered trademarks of D-Link Corporation or its subsidiaries in the United States or other countries. All other company or product names mentioned herein are trademarks or registered trademarks of their respective companies.

Copyright © 2019 by D-Link Corporation, Inc.

All rights reserved. This publication may not be reproduced, in whole or in part, without prior expressed written permission from D-Link Corporation, Inc.

# Table of Contents

**Product Overview..... 1**

    Package Contents..... 1

    Introduction ..... 2

    System Requirements ..... 2

    Hardware Overview ..... 3

    LED Behavior ..... 4

**Installation ..... 5**

    Safety ..... 5

    Before you Begin..... 5

    Wireless Installation Considerations..... 6

    mydlink App Device Setup..... 7

**Using the mydlink App..... 11**

    Controlling Your Device ..... 11

    Device ..... 12

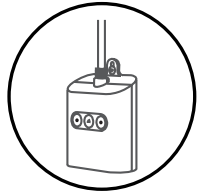
**Troubleshooting ..... 13**

**Technical Specifications ..... 14**

**Regulatory Information ..... 16**

# Product Overview

## Package Contents



DSP-W320 || Outdoor Wi-Fi Smart Plug



Quick Installation Guide



Quick Installation Card

If any of the above items are missing, please contact your reseller.

**Note:** Using an electrical outlet with a different voltage rating than recommended for this product will cause damage and void the warranty for this product.

# Introduction

The D-Link DSP-W320 Outdoor Wi-Fi Smart Plug is a multi-purpose, compact, and easy-to-use device that allows you to control your home's electric appliances, wherever you are. Scheduling provides a helpful way to save power while you're at work or asleep, and the mydlink™ app provides an easy way to set up alerts, or power an appliance on or off.

## System Requirements

<b>Network Requirements</b>	<ul style="list-style-type: none"><li>• 802.11n/g wireless network</li><li>• An Internet connection</li><li>• A router connected to your broadband modem</li></ul>
<b>mydlink™ App Requirements</b>	<ul style="list-style-type: none"><li>• iPhone, iPad, Android smartphone or tablet (please refer to the mobile app's store page to check whether your device is compatible)</li><li>• Email account (for mydlink™ service registration)</li></ul>







# Hardware Overview



1	Power Cord	Plugs into your wall outlet.
2	Power Buttons / Power Status LEDs	Press this button to switch on or off the individual power outlet. See <b>LED Behavior</b> on page 4 for LED behavior information.
3	Reset Button / System Status LED	Press and hold for this button until the System Status LED turns solid red to factory reset it. See <b>LED Behavior</b> on page 4 for LED behavior information.
4	USB Charging Port	Plug in a USB device that you wish to supply power to here.
5	Power Outlets	Connect your appliances, lamps, or other electronic devices you wish to control here.

# LED Behavior



1	Power Status LEDs		Switched on
			Switched off
2	System Status LED		Booting up / Resetting
			Connected to Wi-Fi and mydlink
			Ready for set up / Disconnected
			Firmware being upgraded

# Installation Safety

Please read all of the safety and operating instructions before using your device:

- Do not open the device or attempt to repair or service it.
- Avoid plugging the device into a wall outlet that is not protected from weather changes.
- Make sure that the plug is inserted all the way into the wall outlet so that there is no exposed metal.
- Do not submerge the device in liquid or attempt to clean it with liquids or solvents. To clean the device, disconnect from the power outlet and use a damp towel.

## Before you Begin

Plan the location of your device:

- Verify that your device is electrically rated to operate with the power available in your location.
- Connect the device into an electrical outlet that is not controlled by a wall switch. This will help you to avoid accidentally turning off power to the device.
- Be sure to plug it in to a grounded electrical outlet in order to help prevent against electrical shock.



# Wireless Installation Considerations

The DSP-W320 Outdoor Wi-Fi Smart Plug connects to your network using a wireless connection from virtually anywhere within the operating range of your wireless network. Keep in mind that the number, thickness and location of walls, ceilings, or other objects that the wireless signals must pass through may limit the range. Typical ranges vary depending on the types of materials and background RF (radio frequency) noise in your home or business. The key to maximizing wireless range is to follow these basic guidelines:

1. Keep the number of walls and ceilings between the product and other network devices to a minimum - each wall or ceiling can reduce your device's range from 1 to 30 meters (3 to 90 feet). Position your devices so that the number of walls or ceilings is minimized.
2. Be aware of the direct line between network devices. A wall that is 0.5 meters (1.5 feet) thick, at a 45-degree angle appears to be almost 1 meter (3 feet) thick. At a 2-degree angle it looks over 14 meters (42 feet) thick. Position devices so that the signal will travel straight through a wall or ceiling (instead of at an angle) for better reception.
3. Building materials make a difference. A solid metal door or aluminum studs may have a negative effect on range. Try to position access points, wireless routers, and computers so that the signal passes through drywall or open doorways. Materials and objects such as glass, steel, metal, walls with insulation, water (fish tanks), mirrors, file cabinets, brick, and concrete will degrade your wireless signal.
4. Keep your product away at least 1 to 2 meters (3 to 6 feet) from electrical devices or appliances that generate RF noise.
5. If you are using 2.4 GHz cordless phones or X-10 (wireless products such as ceiling fans, lights, and home security systems), your wireless connection may degrade dramatically or drop completely. Make sure your 2.4 GHz phone base is as far away from your wireless devices as possible. The base transmits a signal even if the phone is not in use.

# mydlink App Device Setup

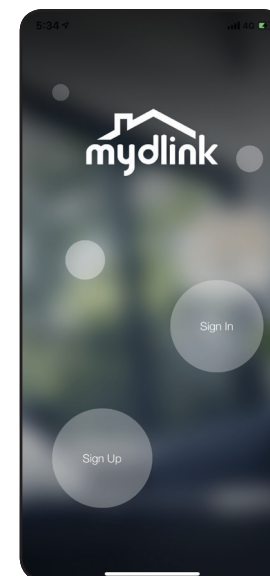
- 1/ Download the mydlink app from the App Store (iOS) or Google Play (Android) by scanning the QR code.

**Note:** Ensure your device is connected wirelessly to the network that the DSP-W320 will be in.

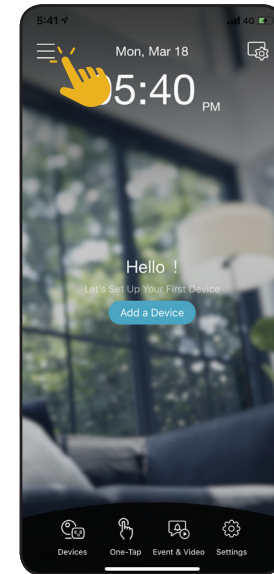


- 2/ Launch the mydlink app and create a new account or sign in to your existing account.

**Note:** On iOS devices, the app will pop up a permission request to send notifications.

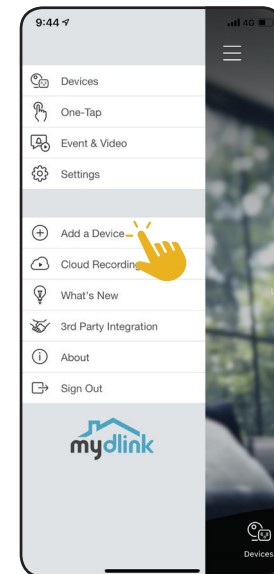


- 3/ After logging in, tap the Menu button ☰ in the top-left corner.



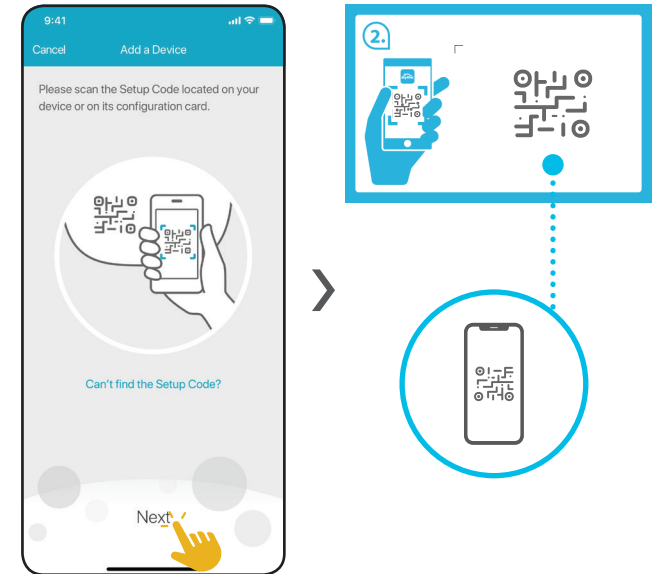
- 4/ Select **Add a Device**.

**Note:** For Android devices, if you are asked about allowing the app to access your location, select **Allow**. Make sure location services and Bluetooth are turned on in your phone's settings.



5/ When asked to scan a Setup Code, press **Next**.

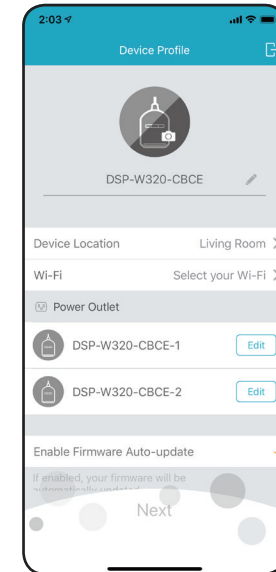
Scan the setup code on the Quick Installation Card.



6/ Follow the onscreen instructions to establish a connection to the device.

Choose the **Device Location** of your device and connect it to a Wi-Fi network. You can also configure the settings for each power outlet.

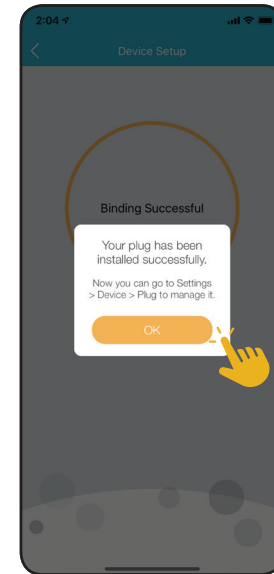
Tap **Next** when all items have been determined.



7/ Tap **OK** to conclude the setup process.

Congratulations, your DSP-W320 Outdoor Wi-Fi Smart Plug is now ready to use!

**Note:** If you experience issues registering this plug with your mydlink account, or if you purchased an open box or resold unit, perform a hard reset by pressing and holding the Reset button on the device until the System Status LED turns red.





# Using the mydlink App Controlling Your Device


**Note:** Screenshots are representative only. The mydlink app is constantly being updated and so may appear different.

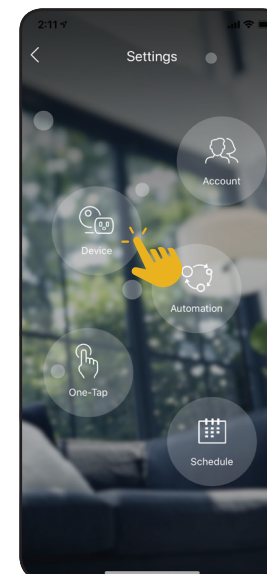
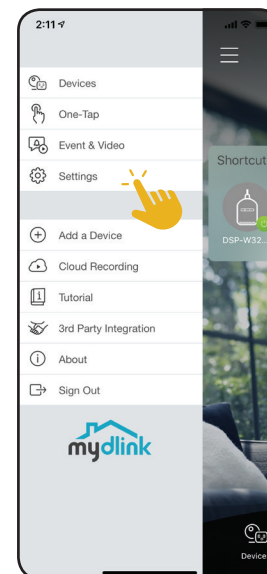
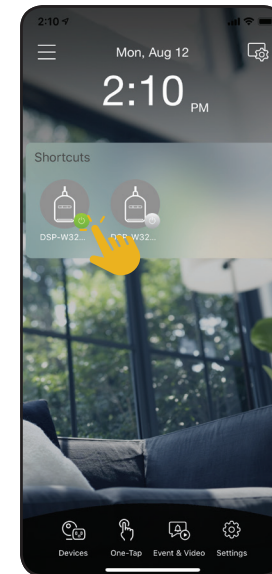
After setting up your DSP-W320 Outdoor Wi-Fi Smart Plug with a mydlink account in the mydlink app, you will be able to remotely access your smart plug through the app. After signing in to your mydlink account, you will see a screen similar to the following.

If you have previously checked the **Add to shortcut** option while installing the device, you will see a quick link to your device directly on the home screen. Tap the shortcut link to turn on or off your device.

In the selected device group page, you can select the specific smart-controlled outlet in the carousel by tapping its icon.

Here you can turn off or on your outlet by tapping the  or  button. You can also tap that button from the home screen if you have previously checked the **Add to shortcut** option.

To access the settings for your DSP-W320 Outdoor Wi-Fi Smart Plug, tap  > **Settings** > **Device** > navigate to your device on the carousel

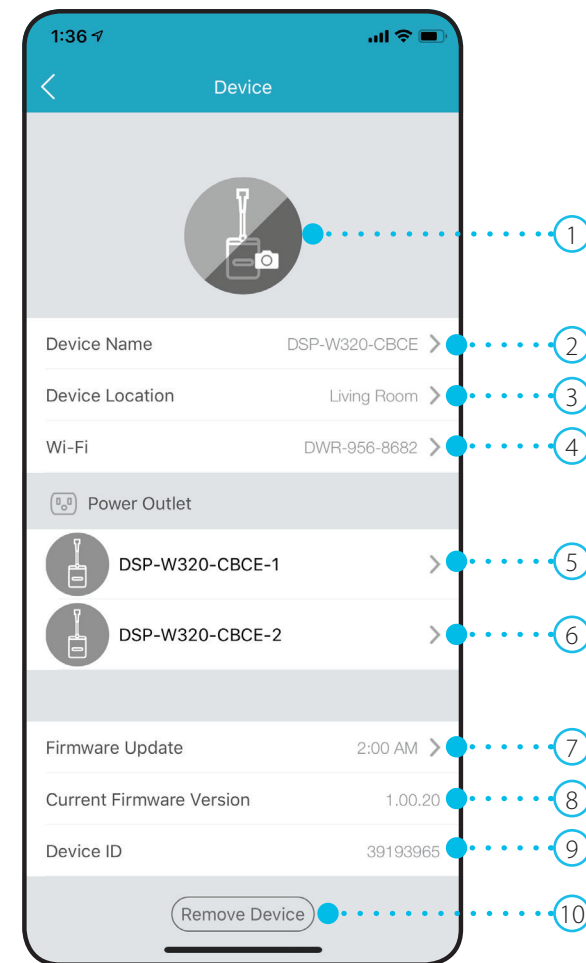


# Device

To access the device page:

- From the home page, tap  > **Settings** > **Device** > navigate to your device on the carousel.

1	<b>Device Photo</b>	Tap to add a customized photo of this device.
2	<b>Device Name</b>	Tap to change the device's name.
3	<b>Device Location</b>	Tap to change or add a new location for this device.
4	<b>Wi-Fi</b>	Displays the Wi-Fi network that the plug is currently connected to. To change it, please factory reset the device.
5	<b>Power Outlet 1</b>	Tap to configure the settings for Power Outlet 1. You can add a customized photo of the device it's plugged to and change the name for easy identification.
6	<b>Power Outlet 2</b>	Tap to configure the settings for Power Outlet 2. You can add a customized photo of the device it's plugged to and change the name for easy identification.
7	<b>Firmware Update</b>	Shows time of auto firmware update. Tap to enter the firmware update settings. You can choose the most suitable time for automatic updates as well as turn them off.
8	<b>Current Firmware Version</b>	This displays the installed version of the firmware on your device.
9	<b>Device ID</b>	Identifies the device for support issues.
10	<b>Remove Device</b>	Tap this button to remove this device from your mydlink account. <b>Note:</b> To relink the device, reset it to factory default settings and run the setup process again.



# Troubleshooting

## What do I do if my smart plug is not working properly?

Reset, then reinstall the smart plug. To reset your smart plug, press and hold the **Reset** button until the LED turns solid red.

During installation, ensure that:

- you have an Internet connection on your router
- your router's Wi-Fi is on
- your mobile device is connected to the Internet

## How can I use voice commands to control my smart plug?

The smart plug will work with both Amazon Alexa and the Google Assistant. For setup instructions on these services, visit the following websites:

Alexa: <https://www.dlink.com/en/alexa>

The Google Assistant: <https://www.dlink.com/en/google-assistant>

## How can I access my device remotely through the Internet?

In order to use your device remotely through the Internet using the mydlink app, you must register your device with a mydlink account. You can do this using the free mydlink app. Please go to **Using the mydlink App** on page **11** for more information.



# Technical Specifications

General		
Standards	• IEEE 802.11n/g  • IEEE 802.15 BLE 4.1	
Security	• WPA/WPA2	
LED	• System status  • Power status	
Antennas	• One internal antenna	
Buttons	• Power Button x 2  • Reset button	
Functionality		
Support Functions	• Smart remote control • Automation • Power scheduling  • Countdown timer • Firmware Over-The-Air (FOTA) • Works with the Google Assistant, Alexa, and IFTTT	
Advanced Features	• mydlink™ app for iOS and Android™ devices	
App Compatibility	• Please refer to the mobile app's store page to check your device's compatibility	
Physical		
Dimensions (L x W x H)	• 120.8 x 98.0 x 44.5 mm (4.76 x 3.86 x 1.75 in)	
Weight	• 336 g (11.85 oz)	
Power Input	• 2 x US (Type B) outlet: AC 120 V / 15 A  • USB: DC 5V / 2.1 A	
Input Frequency	• 60 Hz	
Power Consumption	• < 3 W	
Maximum Load	• 1800 W	
Temperature	• Operating: -20 to 50 °C (-4 to 122 °F)  • Storage: -20 to 70 °C (-4 to 158 °F)	
Humidity	• Operating: 20% to 80% non-condensing  • Storage: 5% to 95% non-condensing	
Ingress Protection	• IP54	
Certifications	• FCC • IC • cUL  • RoHS • UL 498A	

Order Information	
Part Number	Description
DSP-W320	Outdoor Wi-Fi Smart Plug

# Regulatory Information

## **Federal Communication Commission Interference Statement**

This equipment has been tested and found to comply with the limits for a Class B digital device, pursuant to Part 15 of the FCC Rules. These limits are designed to provide reasonable protection against harmful interference in a residential installation. This equipment generates, uses and can radiate radio frequency energy and, if not installed and used in accordance with the instructions, may cause harmful interference to radio communications. However, there is no guarantee that interference will not occur in a particular installation. If this equipment does cause harmful interference to radio or television reception, which can be determined by turning the equipment off and on, the user is encouraged to try to correct the interference by one of the following measures:

- Reorient or relocate the receiving antenna.
- Increase the separation between the equipment and receiver.
- Connect the equipment into an outlet on a circuit different from that to which the receiver is connected.
- Consult the dealer or an experienced radio/TV technician for help.

## **Non-modifications Statement:**

Any changes or modifications not expressly approved by the party responsible for compliance could void the user's authority to operate this equipment.

## **Caution:**

This device complies with Part 15 of the FCC Rules. Operation is subject to the following two conditions:

- (1) This device may not cause harmful interference, and (2) this device must accept any interference received, including interference that may cause undesired operation.

This device and its antenna(s) must not be co-located or operating in conjunction with any other antenna or transmitter except in accordance with FCC multi-transmitter product procedures. For product available in the USA/Canada market, only channel 1~11 can be operated. Selection of other channels is not possible.

## **Note**

The country code selection is for non-USA models only and is not available to all USA models. Per FCC regulations, all WiFi product marketed in the USA must be fixed to USA operational channels only.

## **IMPORTANT NOTICE:**

### **FCC Radiation Exposure Statement**

This equipment complies with FCC radiation exposure limits set forth for an uncontrolled environment. This equipment should be installed and operated with minimum distance 20 cm between the radiator and your body.

### **Innovation, Science and Economic Development Canada (ISED) Statement:**

This Class B digital apparatus complies with Canadian ICES-003.

Cet appareil numérique de la classe B est conforme à la norme NMB-003 du Canada.

### **Innovation, Science and Economic Development Canada (ISED) Statement:**

This device complies with ISED licence-exempt RSS standard(s). Operation is subject to the following two conditions:

- (1) this device may not cause interference, and
- (2) this device must accept any interference, including interference that may cause undesired operation of the device.

Le présent appareil est conforme aux CNR d'ISED applicables aux appareils radio exempts de licence. L'exploitation est autorisée aux deux conditions suivantes :

- (1) l'appareil ne doit pas produire de brouillage, et
- (2) l'utilisateur de l'appareil doit accepter tout brouillage radioélectrique subi, même si le brouillage est susceptible d'en compromettre le fonctionnement.

### **Radiation Exposure Statement**

This equipment complies with ISED radiation exposure limits set forth for an uncontrolled environment. This equipment should be installed and operated with minimum distance 20 cm between the radiator and your body.

### **Déclaration d'exposition aux radiations**

Cet équipement est conforme aux limites d'exposition aux rayonnements ISED établies pour un environnement non contrôlé. Cet équipement doit être installé et utilisé avec un minimum de 20 cm de distance entre la source de rayonnement et votre corps.

This equipment complies with IC RSS-102 radiation exposure limits set forth for an uncontrolled environment. This equipment should be installed and operated with a minimum distance of 20cm between the radiator and any part of your body.

Pour se conformer aux exigences de conformité CNR 102 RF exposition, une distance de séparation d'au moins 20 cm doit être maintenue entre l'antenne de cet appareil et toutes les personnes.