

CONNECT
TO USB
DEVICES
WIRELESSLY¹

¹ Requires a Certified Wireless USB adapter or Certified Wireless USB-enabled PC. Not compatible with USB Webcams.

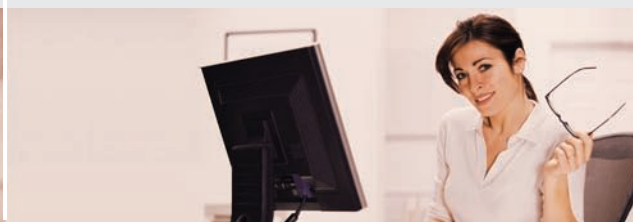


WIRELESS USB 4-PORT HUB

Connect USB devices¹ to your PC wirelessly



Remove cable clutter from your PC



Stream audio/video, print, store & transfer files from across the room



The new D-Link® Wireless USB 4-Port Hub (DUB-2240) enables you to attach USB devices¹ and wirelessly connect them to a Certified Wireless USB-enabled notebook or desktop PC. You can also enable Wireless USB connectivity to your PC using a Certified Wireless USB Adapter (DUB-1210, sold separately). Wireless USB technology provides the convenience of Plug-and-Play USB connectivity with the benefits of wireless. You can stay connected to USB devices¹ such as printers, scanners, digital cameras, external hard drives, and other USB devices without cable clutter around your PC.

NO CABLES, NO CLUTTER

The Wireless USB 4-Port Hub delivers fast wireless communication between attached USB devices¹ and your Certified Wireless USB-enabled PC. It is designed for wirelessly connecting USB peripherals¹ within a 30-foot² range of your PC. It unties you from USB cables, enabling wireless connection of multiple devices¹ for transmission of video, audio, and other high-bandwidth data. Additionally, a wireless frequency range of 3.1GHz to 4.8GHz is used to help avoid interference with Wi-Fi® networks and wireless devices such as mobile phones and cordless home phones.

CONVENIENT & EXPANDABLE

The 4-Port Hub includes a Quick Setup Wizard so you can easily connect to your USB peripherals¹. The DUB-2240 is also expandable. If you need to connect more than four USB devices¹, you can attach a wired USB hub to the DUB-2240. If you have other USB devices¹ tucked away in another part of your room, you can simply add another Wireless USB 4-Port Hub (up to three Wireless USB Hubs to one Wireless USB Adapter), which can be purchased separately.

The D-Link Wireless USB 4-Port Hub (DUB-2240) is ideal for both home and office users alike. Attach multiple USB devices¹ and print, transfer files, and stream audio or video content from across the room without the burden of USB cables attached to your PC.



WHAT THIS PRODUCT DOES

The D-Link® Wireless USB 4-Port Hub (DUB-2240) enables you to attach USB devices¹ and wirelessly connect them to a Certified Wireless USB-enabled notebook or desktop PC within a 30-foot² range. You can also enable Wireless USB connectivity to a PC using a D-Link Wireless USB Adapter (DUB-1210, sold separately). Wireless USB technology eliminates cable clutter around your PC while providing an excellent wireless platform for high-bandwidth applications such as audio/video streaming and transferring of large music/photo/video collections across a room.

D-LINK WILL HELP YOU...

Set up your new D-Link Wireless USB hardware in minutes using our Quick Setup Wizard. The wizard will guide you through an easy-to-follow process to install your new hardware and add USB peripherals¹. If you need additional help, visit the award-winning D-Link Customer Support Website for answers to frequently asked questions, product downloads, and easy access to the friendly D-Link customer support team.

YOUR NETWORK SETUP



TECHNICAL SPECIFICATIONS

STANDARDS

- + Wireless USB 1.0
- + USB 2.0/1.1³
- + WiMedia PHY 1.1
- + WiMedia MAC 1.0

OPERATING FREQUENCY

3.1GHz – 4.8GHz

PORTS

- + 4 USB 2.0 Type-A (Downstream)
- + 1 USB Type-B (Cable Association)

POWER ADAPTER

5V/3A

SECURITY

AES-128

TEMPERATURE

- + Operating: 32° to 104°F (0° to 40°C)
- + Storage: 14° to 140°F (-10° to 65°C)

HUMIDITY

- + Operating: 5% to 95% Non-condensing
- + Non-operating: 5% to 95% Non-condensing

CERTIFICATION

FCC Class B

DIMENSIONS

- + Item (WxDxH): 3.54" x 2.97" x 0.59"
- + Packaging (WxDxH): 8.86" x 5.91" x 2.95"

WEIGHT

- + Item: 0.2 lbs
- + Packaging: 0.27 lbs

WARRANTY

1-Year Limited⁴

MINIMUM SYSTEM REQUIREMENTS

- + Computer with:
 - Built-in Certified Wireless USB Capability or Certified Wireless USB Adapter (DUB-1210 Recommended)
 - Windows® Vista™⁵ or Windows® XP SP2
 - 20MB Hard Disk Space
 - USB 1.1 Port⁶

PACKAGE CONTENTS

- DUB-2240
- + Wireless USB 4-Port Hub
- + Power Adapter
- + USB Cable
- + Quick Installation Guide
- + CD-ROM⁶ with Manual
 - Driver
 - Product Documentation

¹ Requires a Certified Wireless USB adapter or Certified Wireless USB-enabled PC. Not compatible with USB Webcams.

² Maximum wireless signal range derived from Wireless USB 1.0 specifications. Actual signal range will vary. Network conditions and environmental factors, including volume of network traffic, building materials and construction, and network overhead, lower actual data throughput rate. Environmental factors will adversely affect wireless signal range. For optimal performance, a clear line of sight between the hub and a Certified Wireless USB Adapter or Certified Wireless USB-enabled PC within 30 feet is recommended.

³ Using a USB 1.1 port will affect device performance. USB 2.0 port recommended.

⁴ 1-Year Limited Warranty available only in the USA and Canada.

⁵ Computers must adhere to Microsoft's recommended system requirements. Please contact Microsoft for details.

⁶ Latest software and documentation are available at <http://support.dlink.com>.