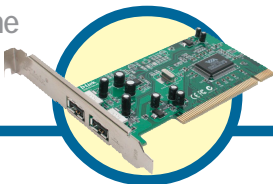


# D-Link Quick Installation Guide

This product can be used with the following operating systems:  
**Windows XP, Me, 2000, 98SE**



**DUB-A2**  
2-Port Hi-Speed  
USB 2.0 PCI Adapter

## Before You Begin





You must have at least the following:

- Windows XP/Me/2000/98SE
- Pentium Class CPU or Higher
- One Available PCI Slot
- CD-ROM Drive

## Check Your Package Contents

These are the items included with your purchase:

If any of the below items are missing, please contact your reseller.

	• <b>DUB-A2 Hi-Speed USB 2.0 PCI Adapter</b>
	• <b>CD-ROM (containing Drivers, Installation Guide and Warranty)</b>
	• <b>USB 2.0 Cable</b>
	• <b>Quick Installation Guide</b>

# 1

## Installing The DUB-A2 Hi-Speed USB 2.0 PCI Adapter Into Your Computer

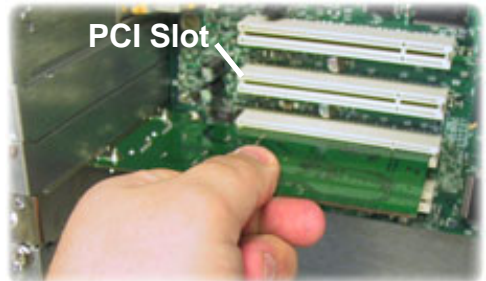


**Make sure that your computer is turned OFF before installing the DUB-A2.**

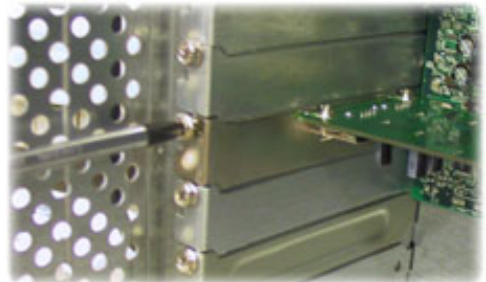
Disconnect the power cord from the wall outlet. Remove the outer cover of your computer. Refer to your computer manual as needed. Remove the backplate. (The small piece of metal that covers the opening for the **PCI** card).



Locate an available PCI slot and insert the **DUB-A2** carefully into the PCI slot.



Secure the **DUB-A2** with the screw from the backplate. Replace your computer's cover and plug in the power cord.



## 2 Installing the DUB-A2 Drivers

Turn on your computer and insert the **D-Link DUB-A2 Driver CD** in the CD-ROM drive.

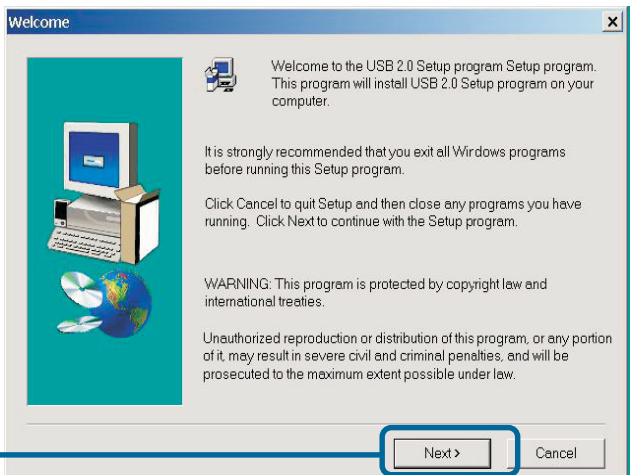
Click **Install Drivers**



If the Autorun screen does not automatically start, click on **Start > Run**, enter "**D:\Autorun.exe**" and click **OK**. "**D**" represents the letter of your CD-ROM drive. Replace it if your CD-ROM drive is a different letter.

## Windows XP Users

It is required that you have the latest Windows XP updates and service packs loaded on your computer prior to installing the **DUB-A2**.

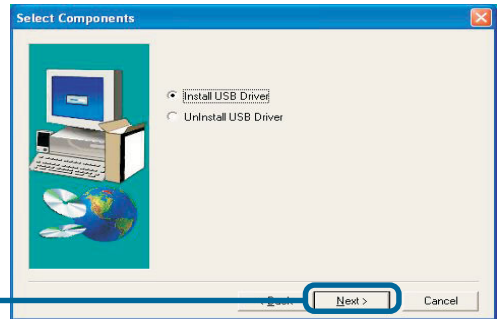


Click **Next**

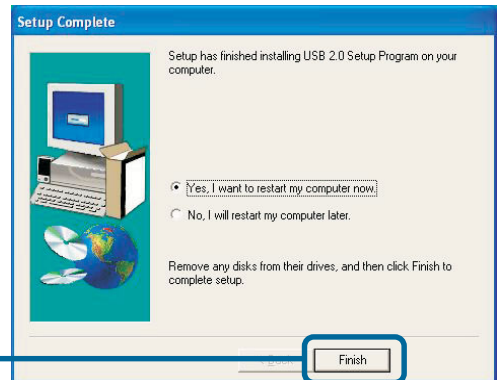
# 2

## Installing the DUB-A2 Drivers (continued)

Click **Next**

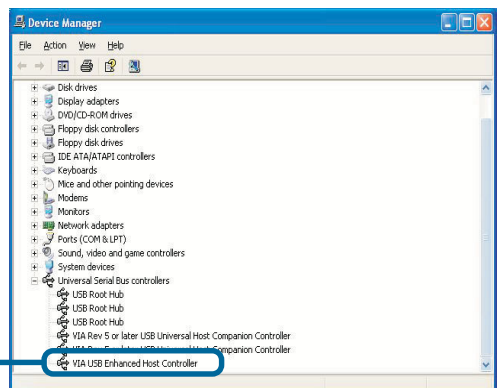


Click **Finish**



To verify your driver installation, right-click on **My Computer>Properties>Hardware>Device Manager**

Click on the + sign next to Universal Serial Bus controllers and **USB Enhanced Host Controller** should be displayed to verify that the **DUB-A2** is installed.

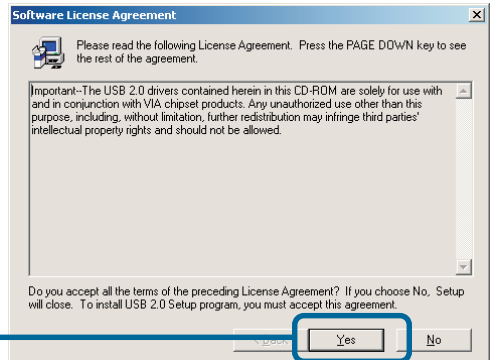


# 2

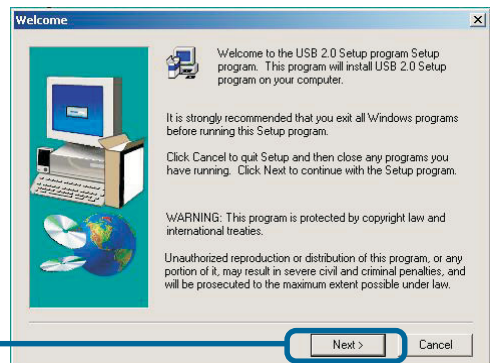
## Installing the DUB-A2 Drivers (continued)

### Windows 2000 Users

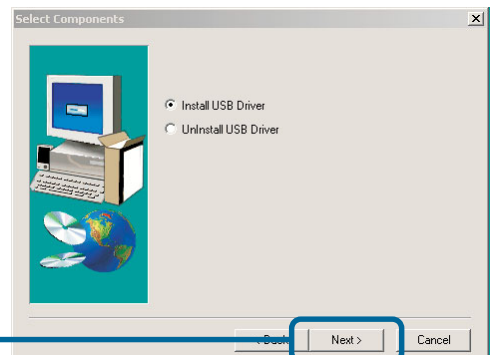
Click **Yes**



Click **Next**

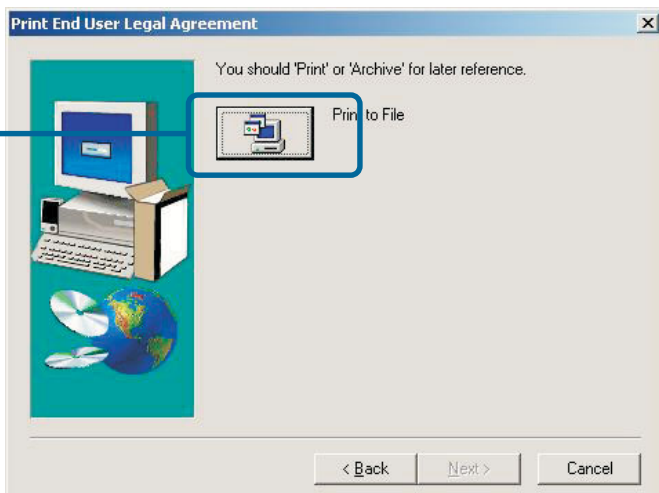
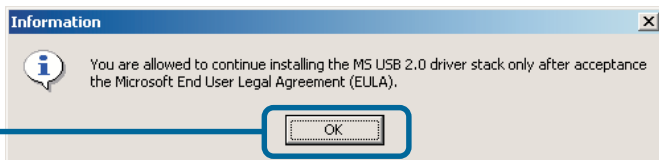
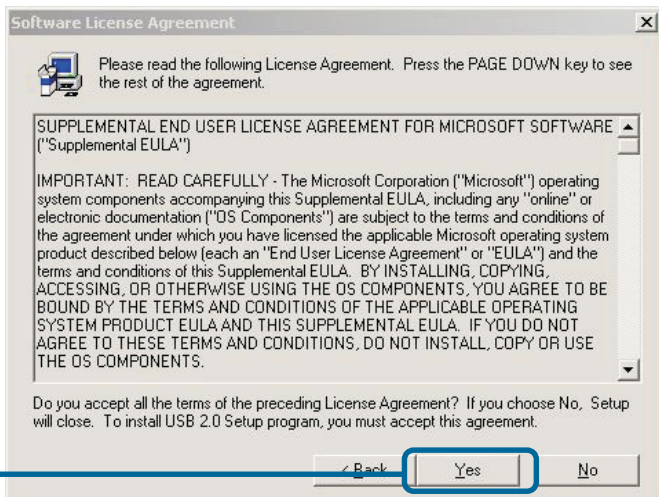


Click **Next**



# 2

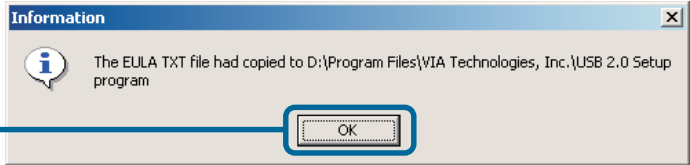
## Installing the DUB-A2 Drivers (continued)



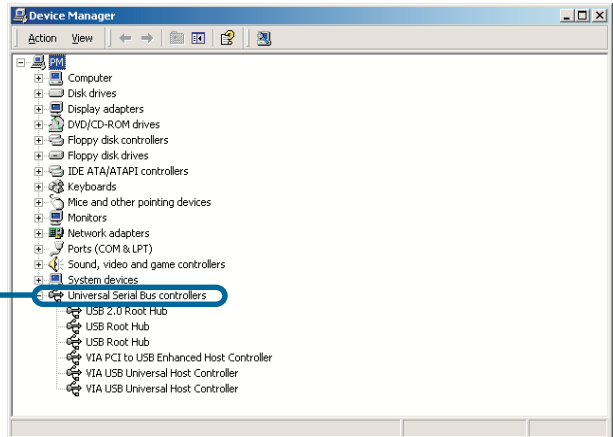
## 2

# Installing the DUB-A2 Drivers (continued)

Click **OK**



Click on the **+** sign next to Universal Serial Bus controllers and **USB Enhanced Host Controller** should be displayed to verify that the **DUB-A2** is installed.

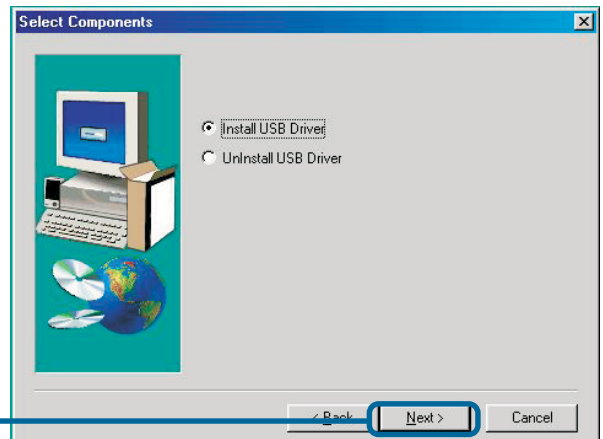
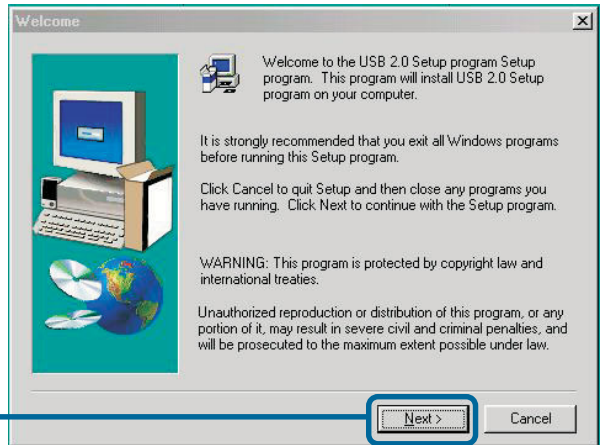


# 2

## Installing the DUB-A2 Drivers (continued)

### Windows ME/98SE Users

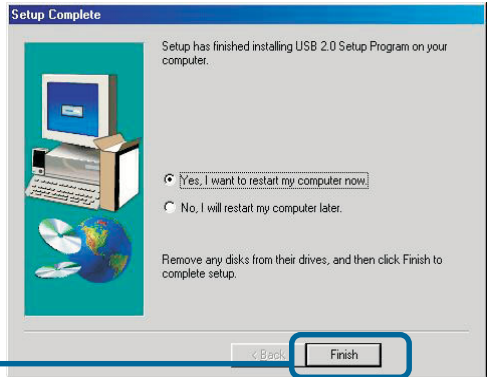
On booting up, Windows may detect new hardware, please cancel out of all screens and run **Install Drivers**.





# 2

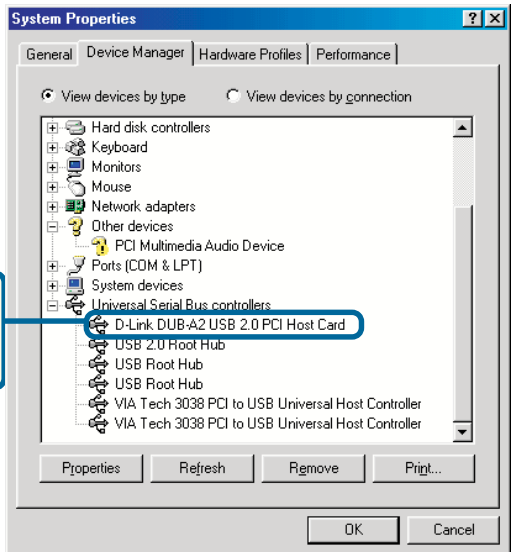
## Installing the DUB-A2 Drivers (continued)



Click **Finish**

**Windows 98 may prompt you for the Windows 98 CD Rom. If prompted, insert the Windows 98 CD Rom and select **OK**.**

To verify your DUB-A2 installation right-click on **My Computer>Properties>Device Manager**



**A D-Link DUB-A2 USB 2.0 PCI Host Card should be displayed.**

**Your installation is now complete!**

# 3

## Introduction to USB 2.0 and Helpful Tips

### Introduction

USB stands for Universal Serial Bus. It is a standard for connecting external devices to your computer quickly and easily. One of the nice things about USB is that power can be provided to the USB device through the USB cable. However, some devices such as printers need more power than the USB ports can provide, so those devices will have to use an external power source. USB also allows the device to be connected and removed from the PC without the need to shut -down the computer.

USB 2.0 is the second generation standard that improves on USB 1.1 to provide faster and more reliable data transfers. USB 1.1's speed of 12Mbps is extended to 480Mbps with USB 2.0. The improved speed and bandwidth opens up the possibility for new solutions such as external backup or data storage solutions, as well as digital audio and video solutions.

One important feature of the USB 2.0 standard is that it is backward compliant with USB 1.0 and USB 1.1. This means that all of your current USB products will work with USB 2.0 adapters.

Many USB products are widely available on the market and more are being developed for future release. Because of the high speed of the USB interface, a USB hub can be used to connect more than one USB device to one USB port at one time. The USB standard specifies that up to 127 devices can be connected to your computer.

### Helpful Tips

- Remember that when connecting USB 1.0 or USB 1.1 products into a USB 2.0 adapter, the USB 1.x product will not work faster.
- To ensure optimal performance when using USB 2.0 devices, use a USB 2.0 certified cable such as the DUB-C5AB.

# Notes

# Technical Support

You can find software updates and user documentation on the D-Link website.

D-Link provides free technical support for customers within the United States and within Canada for the duration of the warranty period on this product.

U.S. and Canadian customers can contact D-Link Technical Support through our website, or by phone.

## Tech Support for customers within the United States:

### ***D-Link Technical Support over the Telephone:***

(877) 453-5465

24 hours a day, seven days a week.

### ***D-Link Technical Support over the Internet:***

<http://support.dlink.com>

email:[support@dlink.com](mailto:support@dlink.com)

## Tech Support for customers within Canada:

### ***D-Link Technical Support over the Telephone:***

(800) 361-5265

Monday to Friday 8:30am to 9:00pm EST

### ***D-Link Technical Support over the Internet:***

<http://support.dlink.ca>

email:[support@dlink.ca](mailto:support@dlink.ca)



**Building Networks for People**