



Quick Install Guide

Wireless N USB Adapter



Thank you for purchasing the Wireless N USB Adapter. Follow the easy steps in this guide to properly set up your adapter. Please verify that all the package contents listed below are available.

Package Contents

-  DWA-135 Wireless N USB Adapter
-  CD with drivers

If any of the above items are missing, please contact your reseller.

System Requirements

- A desktop computer with an available USB 2.0 slot
- Windows® 7, Windows Vista® (32/64-bit), XP (32/64-bit with Service Pack 2 or higher)
- 300MHz processor and at least 64MB of RAM
- An 802.11g/n access point or wireless router

DWA-135

What This Product Does

The D-Link DWA-135 is an 802.11n wireless adapter that delivers unrivaled performance for your laptop or desktop computer. Once connected, access your network’s high-speed Internet connection while sharing photos, files, music, video, printers, and storage.

Before You Begin

Before installing your new D-Link wireless adapter, please verify the following:

- Remove any previous installations of wireless adapters.
- Disable any built-in wireless adapters.
- Verify the settings such as the wireless network name (SSID) and security settings of the network(s) you want to connect to.

Note: If you’ve installed a different manufacturer’s adapter or a different model D-Link adapter, make sure the software is uninstalled before installing the new software. Some utilities may cause a conflict with the new software. Windows® 7, Windows Vista® and XP users may use the built-in wireless utility.

Installation

Note: Do NOT plug the adapter into your computer before installing the drivers.

Insert the DWA-135 Driver CD into the CD-ROM drive. When the autorun screen appears, click **Install** and follow the on-screen instructions to install the wireless adapter drivers and software.

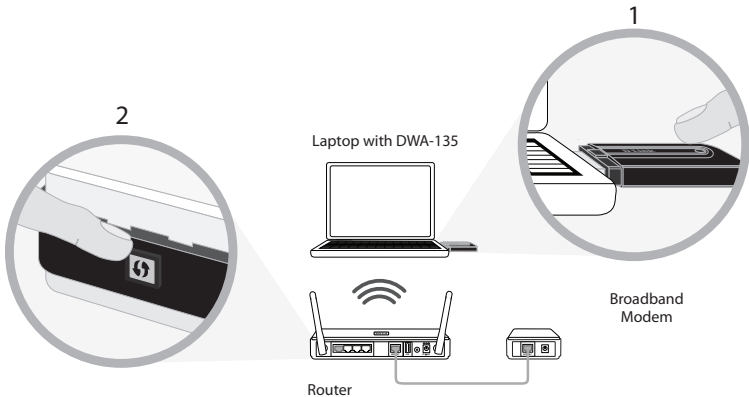
If the CD Autorun function does not automatically start on your computer, go to **Start > Run**. In the run box type “**D:\autorun.exe**” (where D: represents the drive letter of your CD-ROM drive) and click **OK**.

Wi-Fi Protected Setup (WPS)

Wi-Fi Protected Setup (WPS) System is designed for easy setup of security enabled Wi-Fi networks. It is recommended to have the access point or wireless router nearby during setup.

Push Button Configuration

- To connect to your network, press the WPS button on the adapter and hold for three seconds until the wizard screen appears.
- Press the WPS button located on your access point or router to continue. This screen will appear once you have successfully established connection with your network.



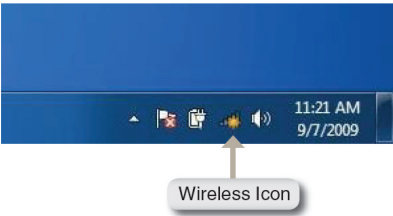
Connect to a Wireless Network - Using Windows® 7

Windows® 7 users may use the built-in wireless utility.

If you receive the **Wireless Networks Detected** bubble, click on the center of the bubble to access the utility.

or

Left-click the wireless icon in your system tray (lower-right corner next to the time).



The utility will display any available wireless networks in your area. Click on a network (displayed using the Network Name) and click the **Connect** button.



Technical Support

Having trouble installing your new product? D-Link’s website contains the latest user documentation and software updates for D-Link products. U.S. and Canadian customers can contact D-Link Technical Support through our website or by phone.

United States

Telephone: (877) 453-5465

Internet: <http://support.dlink.com>

Canada

Telephone: (800) 361-5265

Internet: <http://support.dlink.ca>

Copyright ©2010 D-Link Corporation/D-Link Systems, Inc. All rights reserved. D-Link and the D-Link logo are registered trademarks of D-Link Corporation or its subsidiaries in the United States and other countries. Other trademarks are the property of their respective owners. Maximum wireless signal rate derived from IEEE Standard 802.11g and 802.11n specifications. Actual data throughput will vary. Network conditions and environmental factors, including volume of network traffic, building materials and construction, and network overhead, lower actual data throughput rate. Environmental factors will adversely affect wireless signal range. Product specifications, size and shape are subject to change without notice, and actual product appearance may differ from that depicted on the packaging. Visit www.dlink.com for more details.