



# User Manual

## Wireless AC1000 Dual Band USB Adapter

DWA-180

---

# Preface

D-Link reserves the right to revise this publication and to make changes in the content hereof without obligation to notify any person or organization of such revisions or changes.

## Manual Revisions

Revision	Date	Description
1.0	March 21, 2012	• Initial release for Revision A1

## Trademarks

D-Link and the D-Link logo are trademarks or registered trademarks of D-Link Corporation or its subsidiaries in the United States or other countries. All other company or product names mentioned herein are trademarks or registered trademarks of their respective companies.

Copyright © 2013 by D-Link Systems, Inc.

All rights reserved. This publication may not be reproduced, in whole or in part, without prior expressed written permission from D-Link Systems, Inc.

---

# Table of Contents

<b>Preface.....</b>	<b>2</b>	<b>Troubleshooting .....</b>	<b>28</b>
Manual Revisions.....	2	<b>Wireless Basics .....</b>	<b>31</b>
Trademarks .....	2	Wireless Modes.....	35
<b>Product Overview .....</b>	<b>4</b>	<b>Networking Basics .....</b>	<b>36</b>
Package Contents.....	4	Check your IP address .....	36
System Requirements .....	4	Windows® 8 Users.....	36
Introduction .....	5	Windows® 7/Vista® Users.....	36
Features.....	6	Windows® XP Users .....	36
Hardware Overview .....	7	Statically Assign an IP Address .....	37
<b>Installation .....</b>	<b>8</b>	Windows® 8 Users .....	37
Getting Started.....	8	Windows® 7/ Vista® Users .....	38
Remove Existing Installations .....	8	Windows® XP Users .....	39
Disable Other Adapters .....	9	<b>Technical Specifications .....</b>	<b>40</b>
Wireless Installation Considerations.....	11	<b>Contacting Technical Support .....</b>	<b>41</b>
Adapter Installation .....	12	<b>Warranty.....</b>	<b>42</b>
<b>Connect to a Wireless Network.....</b>	<b>19</b>	<b>Registration .....</b>	<b>49</b>
Wi-Fi Protected Setup (WPS) .....	19		
Wireless Connection Manager.....	20		
<b>D-Link Wireless Connection Manager.....</b>	<b>21</b>		
Wireless Networks .....	22		
Status Bar .....	23		
My Wireless Networks .....	24		
Add/Modify Profile .....	25		
WPA/WPA2 - Personal.....	26		
WPA/WPA2 - Enterprise .....	27		

## Package Contents



D-Link DWA-180 Wireless AC1000 Dual Band USB Adapter



CD with drivers and software



Quick install Guide

## System Requirements

- Windows® 8, 7, Vista®, or XP (32/64-bit)
- CD-ROM Drive
- An 802.11ac, 802.11n, 802.11g, or 802.11a wireless network
- 20MB hard drive space
- An available USB port

# Introduction

The DWA-180 Wireless AC1000 Dual Band USB Adapter is a convenient wireless connectivity solution for desktop or notebook PCs. Instead of stringing Ethernet cables to your PC or dismantling your desktop computer case, the DWA-180 can enable 802.11n wireless connectivity by simply utilizing your desktop or notebook PC's USB port.

Powered by Wireless AC1000 Dual Band technology, the DWA-180 provides a faster wireless connection and superior reception than 802.11n\*. The DWA-180 is designed for use in bigger homes and for those that demand higher networking, and its 5GHz Mediband helps avoid interference by providing a clearer wireless band for signals than existing 802.11n, 802.11g and 802.11a products. Maximize wireless performance by connecting this USB Adapter to a Wireless AC Dual Band Media router and stay connected from virtually anywhere in the home. This USB Adapter supports WPA™ and WPA2™ encryption to prevent outside intrusion and protect your personal information from being exposed.

\* Maximum wireless signal rate derived from IEEE Standard 802.11ac (Draft), 802.11n, and 802.11g specifications. Actual data throughput will vary. Network conditions and environmental factors, including volume of network traffic, building materials and construction, and network overhead, lowers actual data throughput rate. Environmental conditions will adversely affect wireless signal range.

# Features

- 802.11n compliant.
- Fully 802.11g and 802.11a compatible.
- Powered by the USB port; no external power source required.
- USB 2.0 standard\*.
- You can securely connect to a wireless network using WPA™/WPA2™ (Wi-Fi® Protected Access) providing you a much higher level of security for your data and communication than has previously been available. You may also use 802.1x for wireless authentication.
- Position the DWA-180 almost anywhere in your workspace to achieve the best reception possible.
- Supports Infrastructure networks via an access point or wireless router.

\* Using a USB 1.1 port will adversely affect throughput.

# Hardware Overview



1	LED	This LED will blink slowly when installed properly. If this light is off, the drivers are not installed. During the WPS process, this light will blink fast.
2	USB Connector	Used to connect the DWA-180 to your computer.
3	WPS Button	Press the WPS (Wi-Fi Protected Setup) button to automatically connect to a WPS-enabled wireless router or access point and establish connectivity. Refer to page 19.

# Installation

This section will walk you through the installation process. If you have a built-in wireless adapter, please disable it in device manager before installing your D-Link adapter. Also, if you have previously installed another wireless adapter, please make sure any software is uninstalled.

## Getting Started

Before installing your new D-Link wireless adapter, please verify the following:

- Remove any previous installations of wireless adapters.
- Disable any built-in wireless and Ethernet adapters.
- Verify the settings such as the SSID and security settings of the network(s) you want to connect to.

## Remove Existing Installations

If you've installed a different manufacture's adapter or a different model D-Link adapter, make sure the software is uninstalled before installing the new software. Some utilities may cause a conflict with the new software. If you plan to use multiple adapters at different times, make sure the utilities are not set to load when your computer boots up. Windows® users may use the built-in wireless utility for all adapters.

To remove any old software:

Windows® 8 users: Press **Windows Key + Q > Control Panel > Uninstall Programs**.

Windows® 7 users: Click **Start > Control Panel > Uninstall Programs**.

Windows Vista® users: Click **Start > Control Panel > Add or Remove Programs**.

Windows® XP users: Click **Start > Control Panel > Add or Remove Programs**.



## Disable Other Adapters

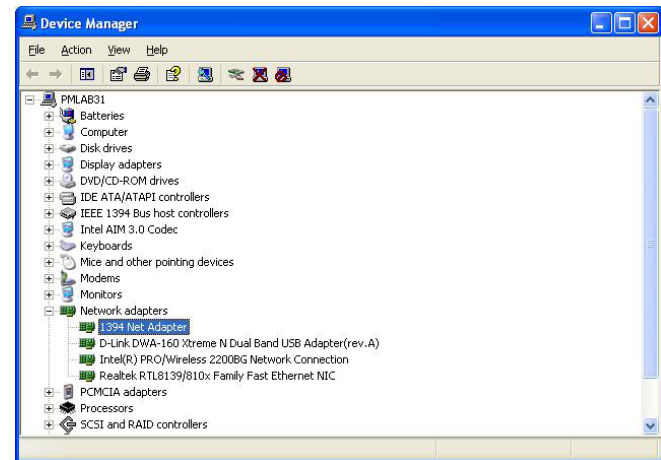
Most newer laptops may include a built-in wireless adapter. To prevent any conflicts with the D-Link wireless adapter, it is recommended to disable the wireless adapter (as well as any unused Ethernet adapters).

Windows® XP - Go to **Start > My Computer > Properties > Hardware > Device Manager**.

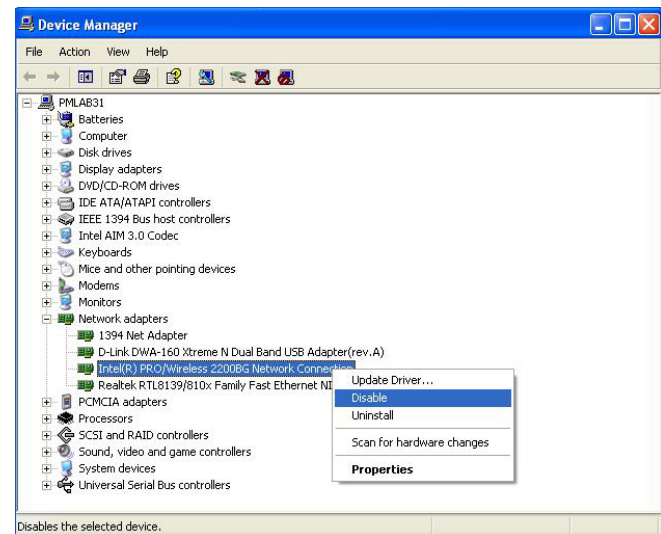
Windows® 7/Vista® - Go to **Start > Device Manager**.

Windows® 8 - Press the **Windows key** and **X** together and then click **Device Manager**.

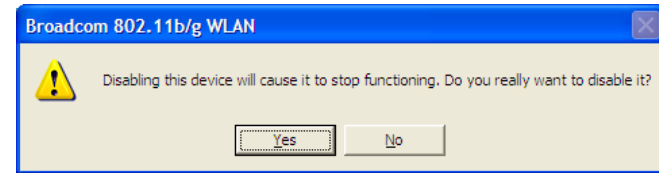
Click the **Hardware** tab and then click **Device Manager**. Scroll down the list and click the + sign to the left of **Network Adapters**.



Right-click the adapter you would like to disable and select **Disable**.

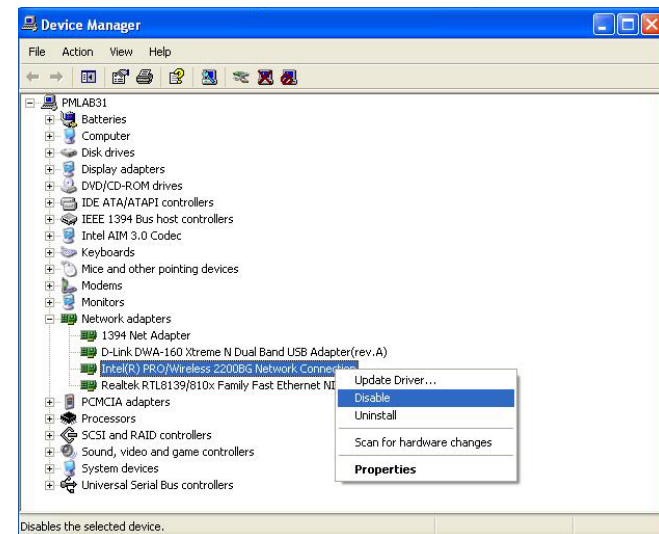


Click **Yes** to disable the adapter.



When the adapter is disabled, a down arrow or a grayed icon will be displayed.

Disabling the adapter will not remove the drivers. If you would like to use the adapter, simply right-click it and select **Enable**.



# Wireless Installation Considerations

The D-Link wireless adapter lets you access your network using a wireless connection from virtually anywhere within the operating range of your wireless network. Keep in mind, however, that the number, thickness and location of walls, ceilings, or other objects that the wireless signals must pass through, may limit the range. Typical ranges vary depending on the types of materials and background RF (radio frequency) noise in your home or business. The key to maximizing wireless range is to follow these basic guidelines:

1. Keep the number of walls and ceilings between the D-Link adapter and other network devices to a minimum - each wall or ceiling can reduce your adapter's range from 3-90 feet (1-30 meters.) Position your devices so that the number of walls or ceilings is minimized.
2. Be aware of the direct line between network devices. A wall that is 1.5 feet thick (.5 meters), at a 45-degree angle appears to be almost 3 feet (1 meter) thick. At a 2-degree angle it looks over 42 feet (14 meters) thick! Position devices so that the signal will travel straight through a wall or ceiling (instead of at an angle) for better reception.
3. Building materials make a difference. A solid metal door or aluminum studs may have a negative effect on range. Try to position access points, wireless routers, and computers so that the signal passes through drywall or open doorways. Materials and objects such as glass, steel, metal, walls with insulation, water (fish tanks), mirrors, file cabinets, brick, and concrete will degrade your wireless signal.
4. Keep your product away (at least 3-6 feet or 1-2 meters) from electrical devices or appliances that generate RF noise.
5. If you are using 2.4GHz cordless phones or X-10 (wireless products such as ceiling fans, lights, and home security systems), your wireless connection may degrade dramatically or drop completely. Make sure your 2.4GHz phone base is as far away from your wireless devices as possible. The base transmits a signal even if the phone is not in use.

# Adapter Installation

**Warning: Do NOT connect the DWA-180 adapter to your computer before installing the driver software from the D-Link CD.**

Turn on the computer and insert the D-Link DWA-180 Driver CD in the CD-ROM drive.

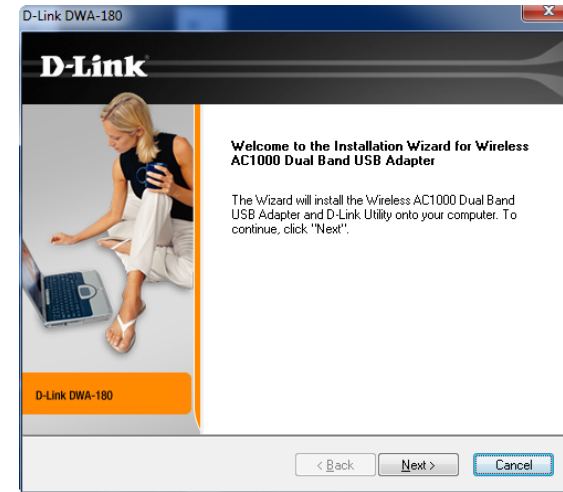
If the CD Autorun function does not automatically start on your computer, go to **Start > Run**. In the run box type "**D:\autorun.exe**" (where **D:** represents the drive letter of your CD-ROM drive).

When the autorun screen appears, click **Install**.



### Step 1

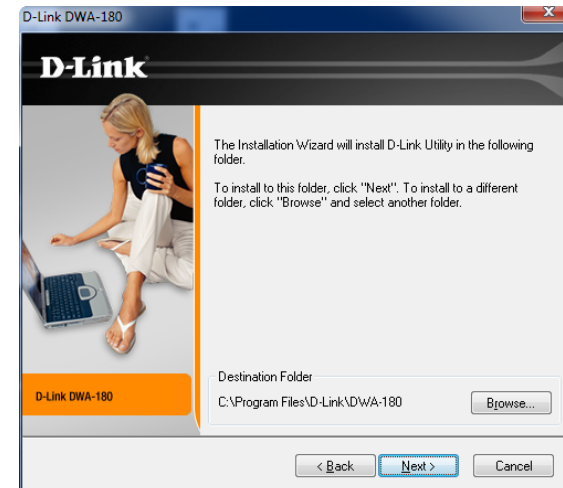
When the Welcome screen appears, click **Next** to continue.



### Step 2

Select the installation folder and click **Next** to continue.

If you do not want to use the default location, click the **Browse** button and select a location.



### Step 3

Select the location to add a program icon to a program folder and click **Next** to continue.



### Step 4

Connect the DWA-180 adapter to an available USB slot on your computer. If the *Found New Hardware Wizard* appears, click **Cancel**.

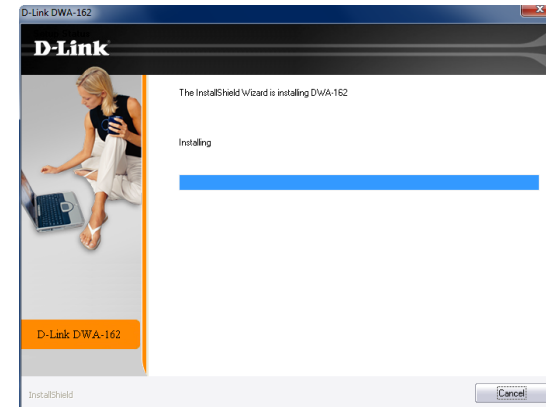
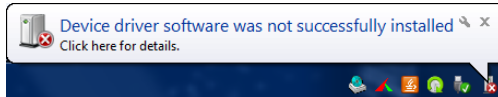
Click **Next** to continue.



### Step 5

The DWA-180 drivers will now be installed. This may take up to one minute.

If you get a bubble alert stating that the adapter has not been installed, ignore it and click the **x** in the upper-right corner to close the alert.

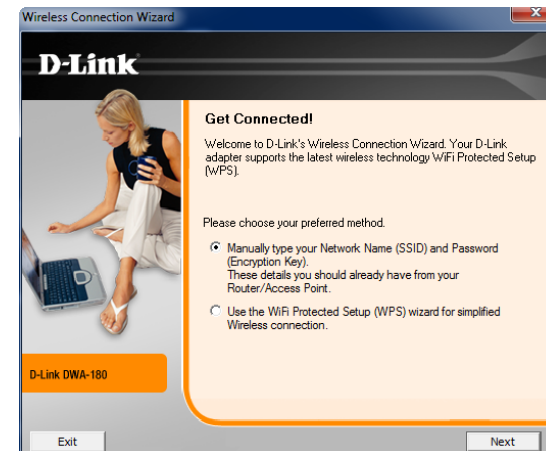


### Step 6

There are two ways to connect to a wireless network:

- A. Manual** - You can manually enter the Wi-Fi Network name (SSID) and password or select from a list of available wireless networks (Site Survey).
- B. WPS (Wi-Fi Protected Setup)** - If you have a WPS-enabled router or access point, use this method to connect. Skip to page 17.

**Note:** If you do not want to connect to a network at this time, click **Exit**. Your adapter and the D-Link software are installed.

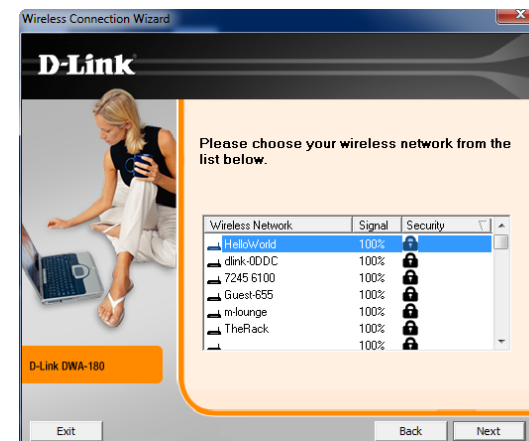
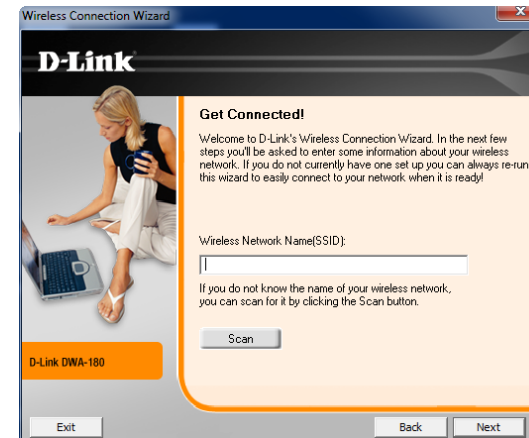


## A. Manual

if you know the Wi-Fi Network name (SSID) of the network you want to connect to, enter the name and click **Next** to continue. If not, click the **Scan** button.

Once you click **Scan**, a list of available wireless networks will be displayed. Select a network to connect to and click **Next**.

If the network you are connecting to is secure, enter the Wi-Fi Password (encryption key) and click **Next**. Skip to page 18.





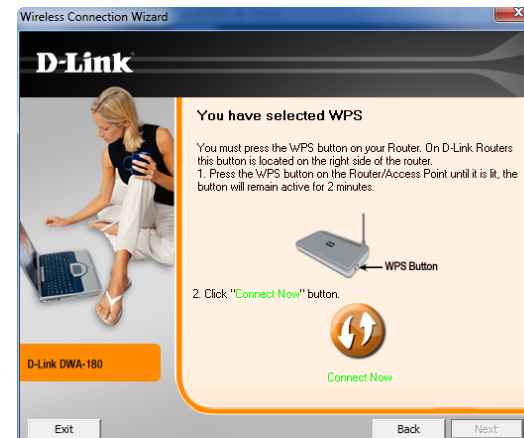
### B. WPS

Press the WPS button on your router. If you do not know how to start the WPS process on your router, please refer to its manual for more information.

Within two minutes press the **Connect Now** button on the screen to start the WPS process on the adapter.

Please allow up to two minutes for the WPS process to finish.

You are now successfully connected to your wireless network. Click **Finish**.



### Step 7

The Wireless Connection Wizard is now completed. Click **Finish** to continue.



### Step 8

The adapter installation is completed. Click **Finish**.



# Connect to a Wireless Network

## Wi-Fi Protected Setup (WPS)

Wi-Fi Protected Setup™ (WPS) System is designed for easy setup of security-enabled Wi-Fi networks. It is recommended to have the access point or wireless router nearby during setup.

**“Push Button Configuration”** (PBC) is a physical button on the DWA-180 and most wireless devices such as routers. A connection can be established by pressing the WPS button on the DWA-180 and then pushing the button on your access point or wireless router within 120 seconds.

1. Press the WPS button located on your wireless router or access point. Please refer to the user manual of your router or access point if you do not know how to start the WPS process.
2. To connect to your network, press the WPS button on the adapter and hold for two seconds. Allow up to two minutes for the devices to connect.

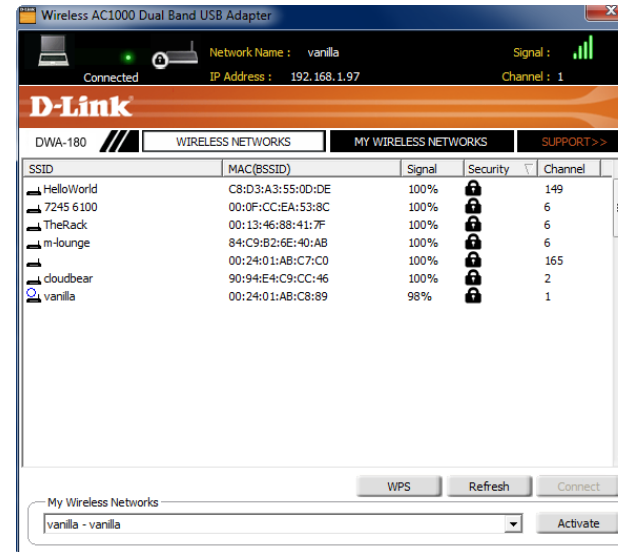


# Wireless Connection Manager

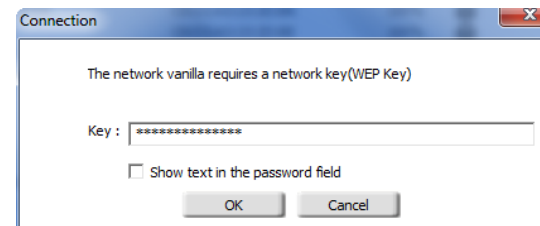
To connect to a wireless network using the D-Link Wireless Connection Manager, follow the steps below:

1. Launch the manager by either clicking on the  icon in the system tray or double-click the Wireless Connection Manager icon on your desktop.

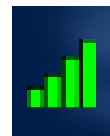
2. When the utility opens, a list of wireless networks in your area will be displayed. Select the network you want to connect to and click **Connect**.



3. If the network you are connecting to is secure, enter the password/passphrase and then click **OK**.



4. Allow about a minute to connect. Once you are connected the Wireless Connection Manager icon in your system tray will turn green.

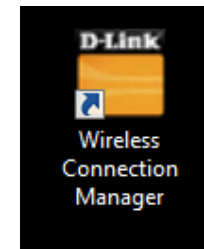


# D-Link Wireless Connection Manager

This section will show you how to configure your new D-Link wireless adapter using the D-Link Wireless Connection Manager.

The DWA-180 uses the Wireless Connection Manager as the management software. The manager provides the user an easy interface to connect to any wireless network, create profiles for commonly-used wireless networks, and change any settings related to the wireless adapter.

To launch the Wireless Connection Manager, either click the wireless icon in your system tray (red or green bars) or double-click on the *Wireless Connection Manager* icon on your desktop.



# Wireless Networks

The Wireless Networks (Site Survey) page will display all wireless networks that are available in your area. To connect to a network, simply highlight the wireless network (SSID) and click **Connect**.

**SSID:** The SSID (Service Set Identifier) is the name of the wireless network.

**MAC:** Displays the MAC address of the wireless device.

**Signal:** Displays the link quality of the wireless connection.

**Security:** If there is a “lock” icon, this means the wireless network is secure (encrypted). You must know the encryption key/password settings to connect.

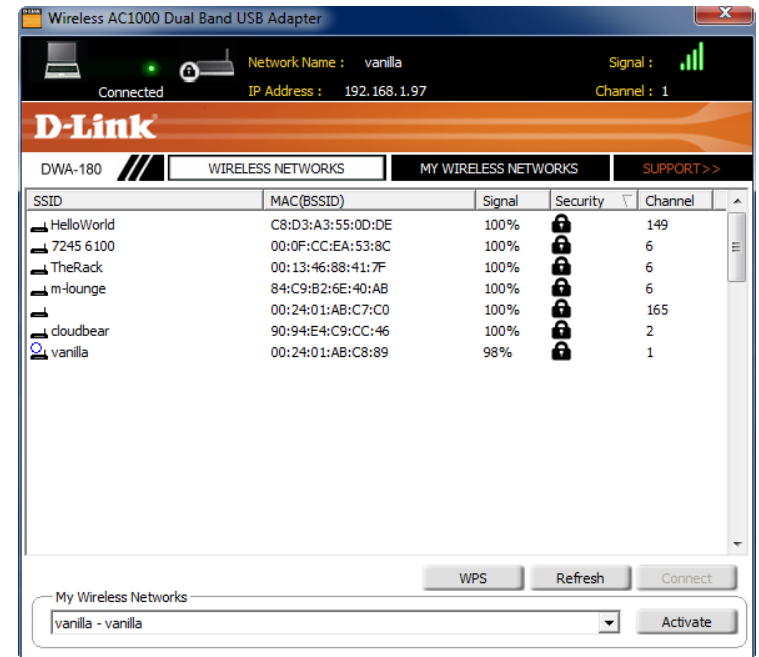
**Channel:** Displays the channel of the wireless network. Your adapter will automatically change to the channel of the network you connect to.

**WPS:** Press to connect to a wireless network using Wi-Fi Protected Setup (WPS). You can use either the push-button method or PIN method, where you enter a PIN code on your wireless router or access point and the adapter.

**Refresh:** Click to rescan for available wireless networks in your area.

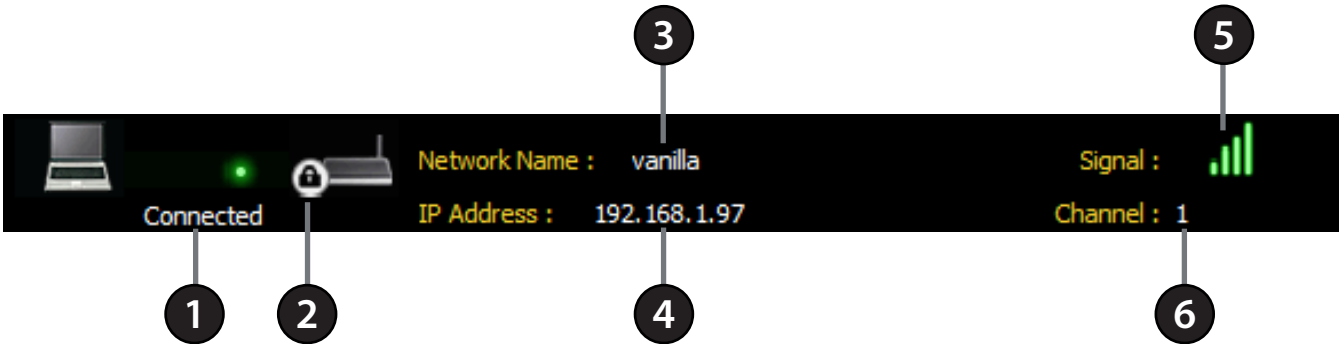
**Connect:** Highlight a wireless network and click the **Connect** button. If the network is secure, a pop-up window will appear. Enter the security information to connect

**Activate:** Select a wireless network profile from the drop-down menu and click **Activate** to connect. Allow up to 30 seconds to connect.



# Status Bar

The status bar at the top of the window will display information about the network you are connected to.



1	Status	Displays if you are connected or disconnected to a wireless network.
2	Security	If there is a lock icon, this indicates that the wireless network has encryption enabled and is secure. If there isn't a lock icon, this means the wireless network is open and not secure.
3	Network Name	Displays the name (SSID) of the wireless network you are connected to.
4	IP Address	Displays the IP address of your wireless adapter.
5	Signal	Displays the signal strength of your wireless network. Four green bars indicates the best signal strength/quality.
6	Channel	Displays the current channel of your wireless network. This setting can only be changed on your wireless router or access point.

# My Wireless Networks

The My Wireless Networks page will allow you to create, edit, and delete wireless network profiles. Every time you connect to a network using the *Wireless Networks* page, a profile will automatically be created.

**My Wireless Networks:** Displays a list of saved wireless networks. To connect to a saved network, simply select the network in the list and click **Activate** on the right side.

**New Button:** To create a new wireless network profile (refer to page 25).

**Modify:** To edit a current profile (refer to page 25).

**Delete:** To remove a profile, select a network from the *My Wireless Networks* list and click **Delete**.

**Activate:** Select a network from the *My Wireless Networks* list and click **Activate** to connect. Allow up to 30 seconds to connect.

**Profile Details:** The *Profile Details* section will display information about the wireless network such as the network name (SSID), network type (Infrastructure or Ad-Hoc), and if the network is secured/encrypted.





## Add/Modify Profile

You may add a new network by clicking the **New** button or edit a current profile by clicking the **Modify** button from the *My Wireless Networks* page.

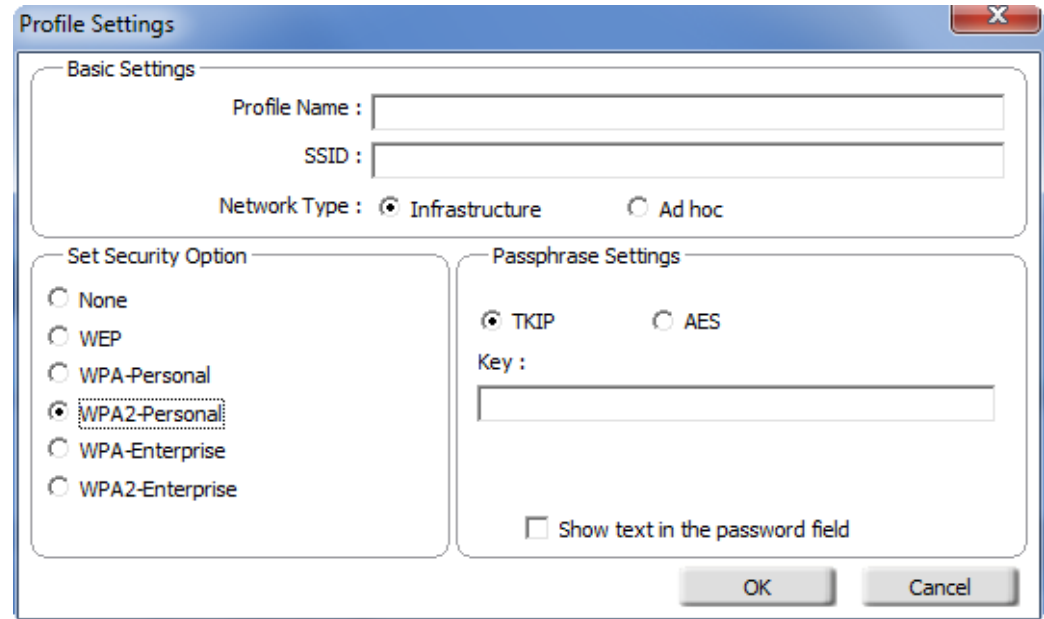
**Profile Name:** Enter a name for your profile (e.g. Home, Office, Coffee Shop).

**SSID:** Enter the wireless name (SSID) of the network.

**Network Type:** Select the network type. If you are connecting to a wireless router or access point, select **Infrastructure**. Select **Ad hoc** if you are connecting to another wireless device that is in Ad hoc mode.

**Security Type:** Select the type of security used on the wireless network: **None**, **WEP**, **WPA-Personal**, **WPA2-Personal**, **WPA-Enterprise**, or **WPA2-Enterprise**. Refer to the next page for more information.

**OK:** Click **OK** to save your settings.



The screenshot shows the 'Profile Settings' dialog box with the following fields and options:

- Basic Settings:**
  - Profile Name : [Text Field]
  - SSID : [Text Field]
  - Network Type : ☒ Infrastructure ☐ Ad hoc
- Set Security Option:**
  - ☐ None
  - ☐ WEP
  - ☐ WPA-Personal
  - ☒ WPA2-Personal
  - ☐ WPA-Enterprise
  - ☐ WPA2-Enterprise
- Passphrase Settings:**
  - ☒ TKIP ☐ AES
  - Key : [Text Field]
  - ☐ Show text in the password field

Buttons: OK, Cancel

## WPA/WPA2 - Personal

If your wireless network is using WPA-Personal or WPA2-Personal (also known as WPA-PSK or WPA2-PSK), you will need to know if TKIP or AES is being used and the passphrase (also known as Wi-Fi Password or Key).

**Set Security Option:** Select either **WPA-Personal** or **WPA2-Personal**.

**Passphrase Settings:** Select if your wireless network is using **TKIP** or **AES**.

**Key:** Enter the wireless network passphrase.

**Show text in the password field:** Check to display the passphrase. Uncheck to hide the passphrase.

**OK:** Click **OK** to save your profile settings.

The screenshot shows the 'Profile Settings' dialog box with the following fields and options:

- Basic Settings:**
  - Profile Name : [Text Field]
  - SSID : [Text Field]
  - Network Type : ☒ Infrastructure ☐ Ad hoc
- Set Security Option:**
  - ☐ None
  - ☐ WEP
  - ☐ WPA-Personal
  - ☒ WPA2-Personal
  - ☐ WPA-Enterprise
  - ☐ WPA2-Enterprise
- Passphrase Settings:**
  - ☒ TKIP ☐ AES
  - Key : [Text Field]
  - ☐ Show text in the password field

At the bottom right are 'OK' and 'Cancel' buttons.

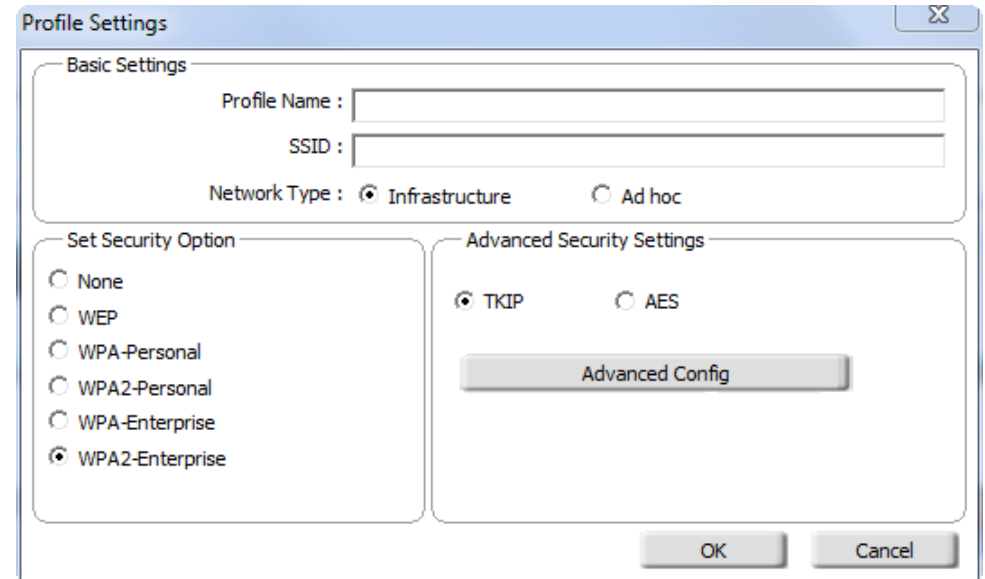
## WPA/WPA2 - Enterprise

WPA and WPA2-Enterprise are for advanced users who are familiar with using a RADIUS server and setting up certificates.

**Set Security Option:** Select either **WPA-Enterprise** or **WPA2-Enterprise**.

**Passphrase Settings:** Select if your wireless network is using **TKIP** or **AES**.

**Advanced Config:** Click to enter your RADIUS server information.



The **Profile Settings** dialog box is divided into two main sections. The **Basic Settings** section at the top contains fields for **Profile Name** and **SSID**, and radio buttons for **Network Type** (Infrastructure and Ad hoc). The **Set Security Option** section on the left lists security protocols: None, WEP, WPA-Personal, WPA2-Personal, WPA-Enterprise, and WPA2-Enterprise (which is selected). The **Advanced Security Settings** section on the right shows radio buttons for **TKIP** (selected) and **AES**, along with an **Advanced Config** button. At the bottom right are **OK** and **Cancel** buttons.

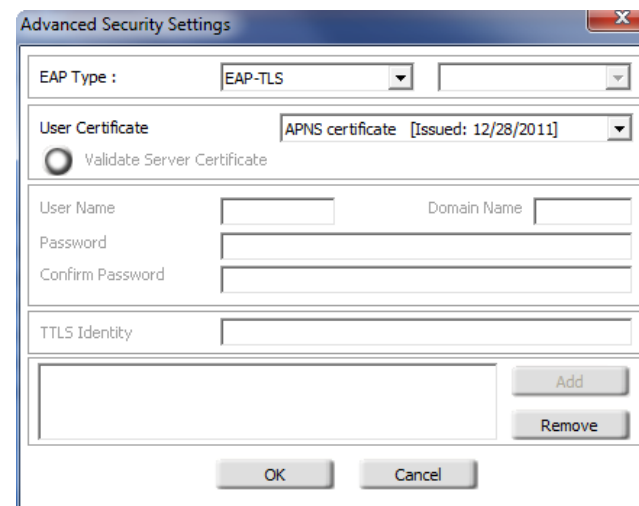
**EAP Type:** Next to *EAP Type*, select **EAP-TLS**.

**User Certificate:** Select a user certificate from the drop-down menu.

**User Information:** Enter the login information required to authenticate.

**Add/Remove:** Click **Add** to enter the IP Address(es) of your RADIUS Server(s). Select an address and click **Remove** to delete it from the list.

**OK:** Click **OK** to save your profile settings.



The **Advanced Security Settings** dialog box contains several fields. At the top is the **EAP Type** dropdown menu, set to **EAP-TLS**. Below it is the **User Certificate** dropdown menu, showing **APNS certificate [Issued: 12/28/2011]**. There is a checkbox for **Validate Server Certificate**. The **User Information** section includes fields for **User Name**, **Password**, **Domain Name**, and **Confirm Password**. Below this is the **TLS Identity** field. At the bottom right are **Add** and **Remove** buttons. At the very bottom are **OK** and **Cancel** buttons.

# Troubleshooting

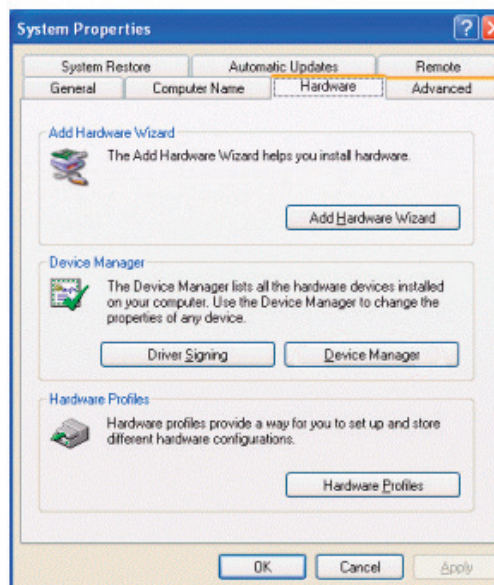
This chapter provides solutions to problems that can occur during the installation and operation of the DWA-180. Read the following descriptions if you are having problems.

## 1. How do I know if my adapter is installed properly?

Windows® XP - Go to **Start > My Computer > Properties > Hardware > Device Manager**.

Windows® 7/Vista® - Go to **Start > Device Manager**.

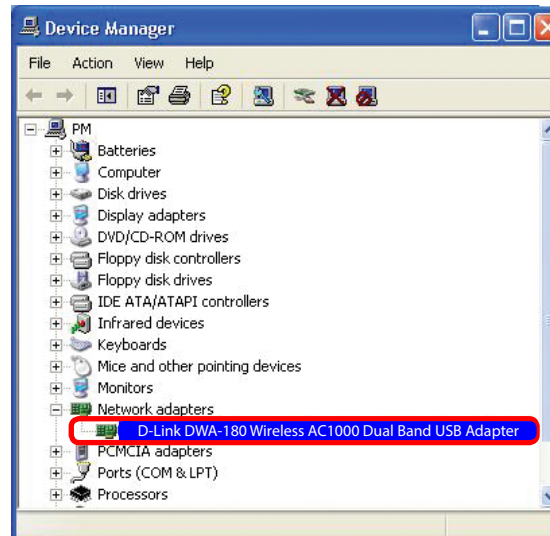
Windows® 8 - Press the **Windows key** and **X** together and then click **Device Manager**.



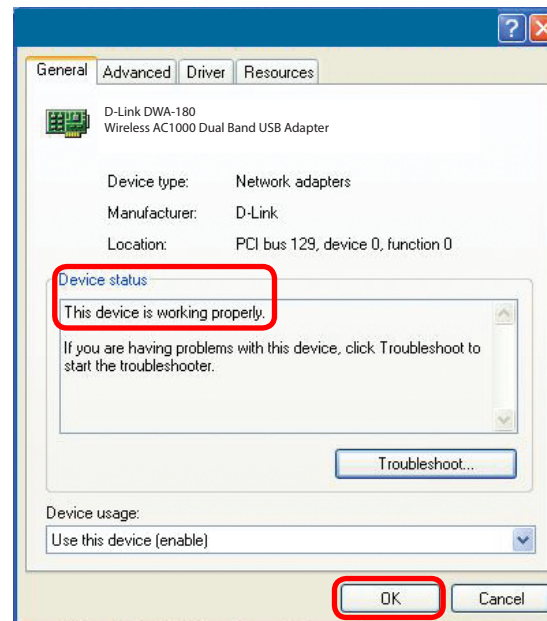
Click the + sign next to **Network Adapters**.

Right-click on **D-Link DWA-180 Wireless N Dual Band USB Adapter**.

Select **Properties** to check that the drivers are installed properly.



Look under *Device Status* to check that the device is working properly. Click **OK** to continue.



## 2. The computer does not recognize the DWA-180 Wireless Adapter.

Make sure that the DWA-180 Wireless Adapter is properly seated in the computer's USB port.

If Windows® does not detect the hardware upon insertion of the adapter, make sure to completely remove drivers that were previously loaded.

## 3. The computer with the DWA-180 installed is unable to connect to the wireless network and/or the Internet.

- Check that the LED indicators for the broadband modem are indicating normal activity. If not, there may be a problem with the broadband connection.
- Check that the LED indicators on the wireless router are functioning properly. If not, check that the AC power and Ethernet cables are firmly connected.
- Check that the IP Address, subnet mask, gateway, and DNS settings are correctly entered for the network
- In **Infrastructure** mode, make sure the same **Service Set Identifier (SSID)** is specified on the settings for the wireless clients and access points. By default, the SSID factory setting for D-Link products is blank. (Double-click on the WLAN icon in the taskbar. The *Link Info* screen will display the SSID setting.)

# Wireless Basics

D-Link wireless products are based on industry standards to provide easy-to-use and compatible high-speed wireless connectivity within your home, business or public access wireless networks. Strictly adhering to the IEEE standard, the D-Link wireless family of products will allow you to securely access the data you want, when and where you want it. You will be able to enjoy the freedom that wireless networking delivers.

A wireless local area network (WLAN) is a cellular computer network that transmits and receives data with radio signals instead of wires. Wireless LANs are used increasingly in both home and office environments, and public areas such as airports, coffee shops and universities. Innovative ways to utilize WLAN technology are helping people to work and communicate more efficiently. Increased mobility and the absence of cabling and other fixed infrastructure have proven to be beneficial for many users.

Wireless users can use the same applications they use on a wired network. Wireless adapter cards used on laptop and desktop systems support the same protocols as Ethernet adapter cards.

Under many circumstances, it may be desirable for mobile network devices to link to a conventional Ethernet LAN in order to use servers, printers or an Internet connection supplied through the wired LAN. A Wireless Router is a device used to provide this link.

## **What is Wireless?**

Wireless or Wi-Fi® technology is another way of connecting your computer to the network without using wires. Wi-Fi uses radio frequency to connect wirelessly, so you have the freedom to connect computers anywhere in your home or office network.

## **Why D-Link Wireless?**

D-Link is the worldwide leader and award winning designer, developer, and manufacturer of networking products. D-Link delivers the performance you need at a price you can afford. D-Link has all the products you need to build your network.

## **How does wireless work?**

Wireless works similar to how cordless phone work, through radio signals to transmit data from one point A to point B. But wireless technology has restrictions as to how you can access the network. You must be within the wireless network range area to be able to connect your computer. There are two different types of wireless networks Wireless Local Area Network (WLAN), and Wireless Personal Area Network (WPAN).

### **Wireless Local Area Network (WLAN)**

In a wireless local area network, a device called an Access Point (AP) connects computers to the network. The access point has a small antenna attached to it, which allows it to transmit data back and forth over radio signals. With an indoor access point, the signal can travel up to 300 feet. With an outdoor access point the signal can reach out up to 30 miles to serve places like manufacturing plants, industrial locations, college and high school campuses, airports, golf courses, and many other outdoor venues.

### **Wireless Personal Area Network (WPAN)**

Bluetooth® is the industry standard wireless technology used for WPAN. Bluetooth devices in WPAN operate in a range up to 30 feet away.

Compared to WLAN the speed and wireless operation range are both less than WLAN, but in return it doesn't use nearly as much power which makes it ideal for personal devices, such as mobile phones, PDAs, headphones, laptops, speakers, and other devices that operate on batteries.



## **Who uses wireless?**

Wireless technology has become so popular in recent years that almost everyone is using it, whether it's for home, office, or business, D-Link has a wireless solution for it.

### **Home**

- Gives everyone at home broadband access
- Surf the web, check email, instant message, and etc
- Gets rid of the cables around the house
- Simple and easy to use

### **Small Office and Home Office**

- Stay on top of everything at home as you would at the office
- Remotely access your office network from home
- Share an Internet connection and printer with multiple computers
- No need to dedicate office space

### **Where is wireless used?**

Wireless technology is expanding everywhere not just at home or the office. People like the freedom of mobility and it's becoming so popular that more and more public facilities now provide wireless access to attract people. The wireless connection in public places is usually called "hotspots".

Using a D-Link USB Adapter with your laptop, you can access the hotspot to connect to the Internet from remote locations like: Airports, Hotels, Coffee Shops, Libraries, Restaurants, and Convention Centers.

Wireless networks are easy to setup, but if you're installing it for the first time it could be quite a task not knowing where to start. That's why we've put together a few setup steps and tips to help you through the process of setting up a wireless network.

### **Tips**

Here are a few things to keep in mind, when you install a wireless network.

#### **Centralize your router or Access Point**

Make sure you place the router/access point in a centralized location within your network for the best performance. Try to place the router/access point as high as possible in the room, so the signal gets dispersed throughout your home. If you have a two-story home, you may need a repeater to boost the signal to extend the range.

#### **Eliminate Interference**

Place home appliances such as cordless telephones, microwaves, and televisions as far away as possible from the router/access point. This can significantly reduce any interference that the appliances might cause since they operate on the same frequency.

### **Security**

Don't let your next-door neighbors or intruders connect to your wireless network. Secure your wireless network by turning on WPA™ /WPA2™ security features on the router. Refer to the product manual for detailed information on how to set it up.

# Wireless Modes

There are basically two modes of networking:

- **Infrastructure** – All wireless clients will connect to an access point or wireless router.
- **Ad-Hoc** – Directly connecting to another computer, for peer-to-peer communication, using wireless network adapters on each computer.

An Infrastructure network contains an Access Point or wireless router. All the wireless devices, or clients, will connect to the wireless router or access point.

An Ad-Hoc network contains only clients, such as laptops with wireless USB Adapters. All the adapters must be in Ad-Hoc mode to communicate.

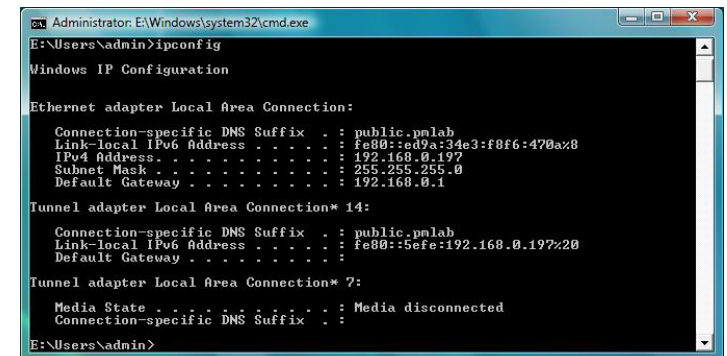
# Networking Basics

## Check your IP address

After you install your new D-Link wireless adapter and have established a wireless connection, by default, the TCP/IP settings should be set to obtain an IP address from a DHCP server (i.e., router) automatically. To verify your IP address, please follow the steps below.

### Windows® 8 Users

- Press the **Windows key** and **R** together. Type **cmd** in the box and click **OK**.
- At the prompt, type **ipconfig** and press **Enter**.
- This will display the IP address, subnet mask, and default gateway of your adapter.



```
Administrator: E:\Windows\system32\cmd.exe
E:\Users\admin>ipconfig

Windows IP Configuration

Ethernet adapter Local Area Connection:

    Connection-specific DNS Suffix  . : public.milab
    Link-local IPv6 Address . . . . . : fe80::ed9a:34a3:f0f6:470a%8
    IPv4 Address. . . . . : 192.168.0.197
    Subnet Mask . . . . . : 255.255.255.0
    Default Gateway . . . . . : 192.168.0.1

Tunnel adapter Local Area Connection* 14:

    Connection-specific DNS Suffix  . : public.milab
    Link-local IPv6 Address . . . . . : fe80::5efe:192.168.0.197%20
    Default Gateway . . . . . :

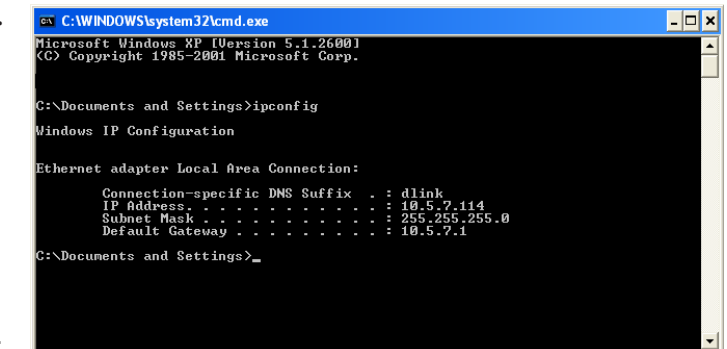
Tunnel adapter Local Area Connection* 7:

    Media State . . . . . : Media disconnected
    Connection-specific DNS Suffix  . :

E:\Users\admin>
```

### Windows® 7/Vista® Users

- Click **Start**, type **cmd** in the search box and then click **OK**.
- At the prompt, type **ipconfig** and press **Enter**.
- This will display the IP address, subnet mask, and default gateway of your adapter.



```
C:\WINDOWS\system32\cmd.exe
Microsoft Windows XP [Version 5.1.2600]
(C) Copyright 1985-2001 Microsoft Corp.

C:\Documents and Settings>ipconfig

Windows IP Configuration

Ethernet adapter Local Area Connection:

    Connection-specific DNS Suffix  . : dlink
    IP Address. . . . . : 10.5.7.114
    Subnet Mask . . . . . : 255.255.255.0
    Default Gateway . . . . . : 10.5.7.1

C:\Documents and Settings>
```

### Windows® XP Users

- Click on **Start > Run**. In the run box type **cmd** and click **OK**.
- At the prompt, type **ipconfig** and press **Enter**.
- This will display the IP address, subnet mask, and the default gateway of your adapter.

If the address is 0.0.0.0, check your adapter installation, security settings, and the settings on your router. Some firewall software programs may block a DHCP request on newly installed adapters.

# Statically Assign an IP Address

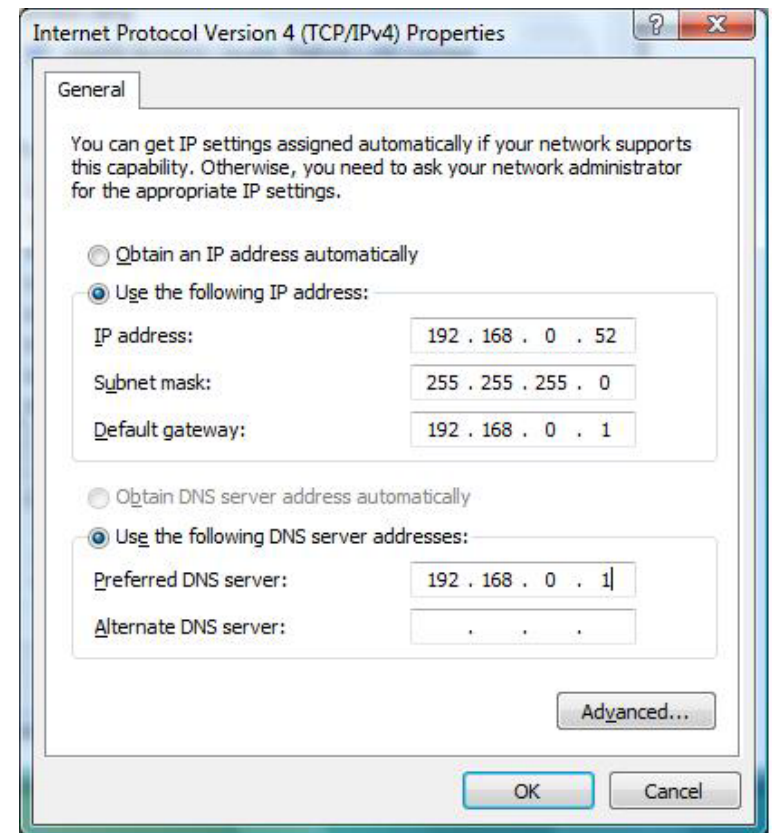
If you are not using a DHCP capable gateway/router, or you need to assign a static IP address, please follow the steps below:

## Windows® 8 Users

- Press the **Windows** key and then type **IP**. Click **Settings** on the right side and then click **View Network Connections**.
- Right-click on the adapter which represents your D-Link wireless network adapter.
- Highlight **Internet Protocol Version 4 (TCP /IPv4)** and click **Properties**.
- Click **Use the following IP address** and enter an IP address that is on the same subnet as your network or LAN IP address on your router or network.

**Example:** If the router's LAN IP address is 192.168.0.1, make your IP address 192.168.0.X where X is a number between 2 and 99. Make sure that the number you choose is not in use on the network.

- Set **Default Gateway** the same as the LAN IP address of your router or gateway.
- Set **Primary DNS** the same as the LAN IP address of your router or gateway.
- The **Secondary DNS** is optional (you may enter a DNS server from your ISP).
- Click **OK** to save your settings.

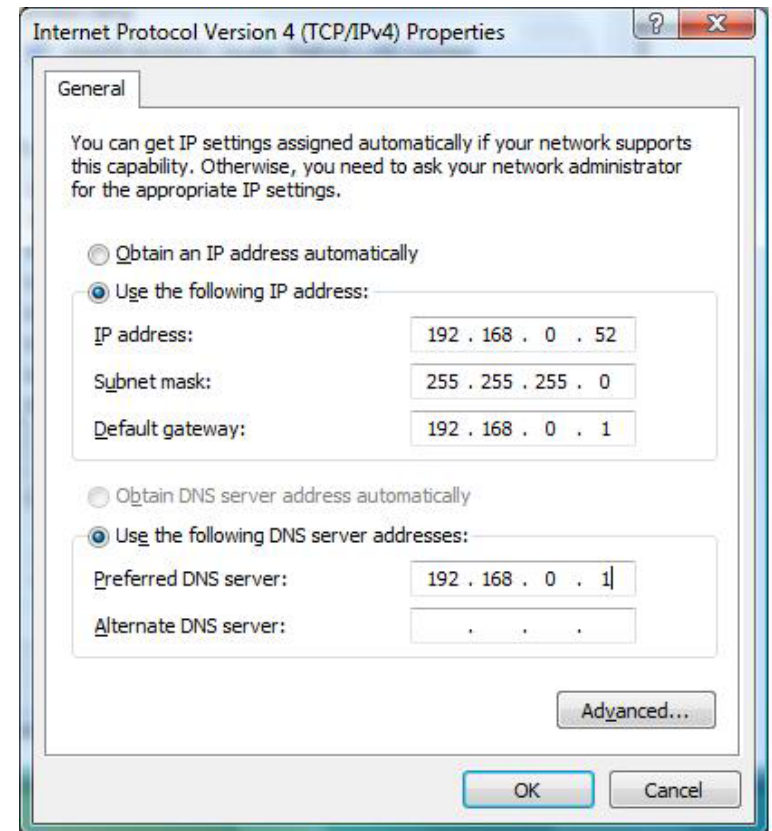


## Windows® 7/ Vista® Users

- Click on **Start > Control Panel** (make sure you are in Classic View). Double-click on the **Network and Sharing Center** icon. If you are using Windows Vista, click on **Manage network connections** along the left panel in the window. For Windows® 7, click on **Change adapter settings**.
- Right-click on the **Local Area Connection** which represents your D-Link wireless network adapter which will be connected to your network.
- Highlight **Internet Protocol Version 4 (TCP /IPv4)** and click **Properties**.
- Click **Use the following IP address** and enter an IP address that is on the same subnet as your network or LAN IP address on your router or network.

**Example:** If the router's LAN IP address is 192.168.0.1, make your IP address 192.168.0.X where X is a number between 2 and 99. Make sure that the number you choose is not in use on the network.

- Set **Default Gateway** the same as the LAN IP address of your router or gateway.
- Set **Primary DNS** the same as the LAN IP address of your router or gateway.
- The **Secondary DNS** is optional (you may enter a DNS server from your ISP).
- Click **OK** to save your settings.

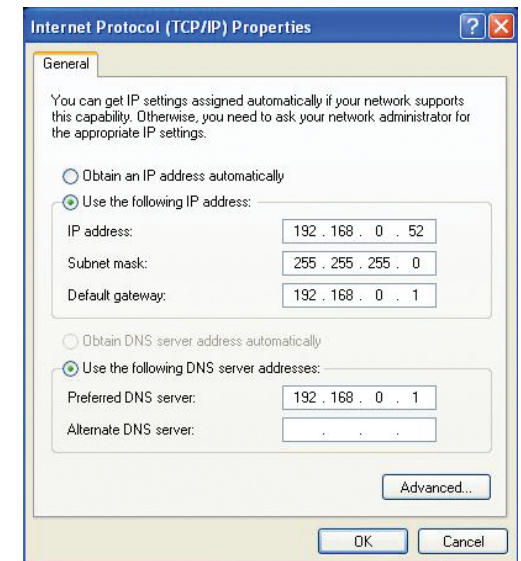


## Windows® XP Users

- Click on **Start > Control Panel**. Make sure you are in Classic View. Double-click on the Network Connections icon.
- Right-click on the **Local Area Connection** which represents your D-Link wireless network adapter (or other adapter) which will be connected to your router.
- Highlight **Internet Protocol (TCP/IP)** and click **Properties**.
- Click **Use the following IP address** and enter an IP address that is on the same subnet as your network or LAN IP address on your router.

**Example:** If the router's LAN IP address is 192.168.0.1, make your IP address 192.168.0.X where X is a number between 2 and 99. Make sure that the number you choose is not in use on the network.

- Set **Default Gateway** the same as the LAN IP address of your router or gateway.
- Set **Primary DNS** as the LAN IP address of your router or gateway.
- The **Secondary DNS** is optional (you may enter a DNS server from your ISP).
- Click **OK** to save your settings.



# Technical Specifications

## Standards

- IEEE 802.11ac (Draft)
- IEEE 802.11n
- IEEE 802.11g
- IEEE 802.11a

## Security

- WPA™/WPA2™ - Wi-Fi Protected Access
- WPS (PIN and PBC)

## Media Access Control

- CSMA/CA with ACK

## Frequency Range

- 2.4GHz to 2.462GHz (North America)
- 5.15GHz to 5.35GHz (North America)
- 5.725GHz to 5.825GHz (North America)

## Transmitter Power Output

- 16 dBm (802.11g/n)
- 15 dBm (802.11a)

## Operating Voltage

- 5 VDC +/- 10%

## Operating Temperature

- 32°F to 104°F ( 0°C to 40°C)

## Operating Humidity

- 10% to 90% maximum (non-condensing)

## Dimensions

- 1.5" x 3.5" x 0.5"

## Weight

- 0.316lbs

## Certifications

- FCC Class B
- IC
- Wi-Fi®

## Warranty

- 1 Year Limited

*\* Maximum wireless signal rate derived from IEEE Standard 802.11ac (draft), 802.11n, and 802.11g specifications. Actual data throughput will vary. Network conditions and environmental factors, including volume of network traffic, building materials and construction, and network overhead, lower actual data throughput rate. Environmental factors will adversely affect wireless signal range.*



# Contacting Technical Support

Before you contact technical support, please have the following ready:

- Model number of the product (e.g., DWA-180)
- Hardware Revision (located on the label on the adapter (e.g., rev A1))
- Serial Number (s/n number located on the label on the adapter).

You can find software updates and user documentation on the D-Link website as well as frequently asked questions and answers to technical issues.

## For customers within the United States:

### Phone Support:

(877) 453-5465

### Internet Support:

<http://support.dlink.com>

## For customers within Canada:

### Phone Support:

(800) 361-5265

### Internet Support:

<http://support.dlink.ca>

# Warranty

Subject to the terms and conditions set forth herein, D-Link Systems, Inc. ("D-Link") provides this Limited Warranty:

- Only to the person or entity that originally purchased the product from D-Link or its authorized reseller or distributor, and
- Only for products purchased and delivered within the fifty states of the United States, the District of Columbia, U.S. Possessions or Protectorates, U.S. Military Installations, or addresses with an APO or FPO.

## **Limited Warranty:**

D-Link warrants that the hardware portion of the D-Link product described below ("Hardware") will be free from material defects in workmanship and materials under normal use from the date of original retail purchase of the product, for the period set forth below ("Warranty Period"), except as otherwise stated herein.

- Hardware: One (1) year

The customer's sole and exclusive remedy and the entire liability of D-Link and its suppliers under this Limited Warranty will be, at D-Link's option, to repair or replace the defective Hardware during the Warranty Period at no charge to the original owner or to refund the actual purchase price paid. Any repair or replacement will be rendered by D-Link at an Authorized D-Link Service Office. The replacement hardware need not be new or have an identical make, model or part. D-Link may, at its option, replace the defective Hardware or any part thereof with any reconditioned product that D-Link reasonably determines is substantially equivalent (or superior) in all material respects to the defective Hardware. Repaired or replacement hardware will be warranted for the remainder of the original Warranty Period or ninety (90) days, whichever is longer, and is subject to the same limitations and exclusions. If a material defect is incapable of correction, or if D-Link determines that it is not practical to repair or replace the defective Hardware, the actual price paid by the original purchaser for the defective Hardware will be refunded by D-Link upon return to D-Link of the defective Hardware. All Hardware or part thereof that is replaced by D-Link, or for which the purchase price is refunded, shall become the property of D-Link upon replacement or refund.

### **Limited Software Warranty:**

D-Link warrants that the software portion of the product ("Software") will substantially conform to D-Link's then current functional specifications for the Software, as set forth in the applicable documentation, from the date of original retail purchase of the Software for a period of ninety (90) days ("Software Warranty Period"), provided that the Software is properly installed on approved hardware and operated as contemplated in its documentation. D-Link further warrants that, during the Software Warranty Period, the magnetic media on which D-Link delivers the Software will be free of physical defects. The customer's sole and exclusive remedy and the entire liability of D-Link and its suppliers under this Limited Warranty will be, at D-Link's option, to replace the non-conforming Software (or defective media) with software that substantially conforms to D-Link's functional specifications for the Software or to refund the portion of the actual purchase price paid that is attributable to the Software. Except as otherwise agreed by D-Link in writing, the replacement Software is provided only to the original licensee, and is subject to the terms and conditions of the license granted by D-Link for the Software. Replacement Software will be warranted for the remainder of the original Warranty Period and is subject to the same limitations and exclusions. If a material non-conformance is incapable of correction, or if D-Link determines in its sole discretion that it is not practical to replace the non-conforming Software, the price paid by the original licensee for the non-conforming Software will be refunded by D-Link; provided that the non-conforming Software (and all copies thereof) is first returned to D-Link. The license granted respecting any Software for which a refund is given automatically terminates.

### **Non-Applicability of Warranty:**

The Limited Warranty provided hereunder for Hardware and Software portions of D-Link's products will not be applied to and does not cover any refurbished product and any product purchased through the inventory clearance or liquidation sale or other sales in which D-Link, the sellers, or the liquidators expressly disclaim their warranty obligation pertaining to the product and in that case, the product is being sold "As-Is" without any warranty whatsoever including, without limitation, the Limited Warranty as described herein, notwithstanding anything stated herein to the contrary.

### **Submitting A Claim:**

The customer shall return the product to the original purchase point based on its return policy. In case the return policy period has expired and the product is within warranty, the customer shall submit a claim to D-Link as outlined below:

- The customer must submit with the product as part of the claim a written description of the Hardware defect or Software nonconformance in sufficient detail to allow D-Link to confirm the same, along with proof of purchase of the product (such as a copy of the dated purchase invoice for the product) if the product is not registered.
- The customer must obtain a Case ID Number from D-Link Technical Support (USA 1-877-453-5465, who will attempt to assist the customer in resolving any suspected defects with the product. If the product is considered defective, the customer must obtain a Return Material Authorization ("RMA") number by completing the RMA form. Enter the assigned Case ID Number at <https://rma.dlink.com/> (USA only).
- After an RMA number is issued, the defective product must be packaged securely in the original or other suitable shipping package to ensure that it will not be damaged in transit, and the RMA number must be prominently marked on the outside of the package. Do not include any manuals or accessories in the shipping package. D-Link will only replace the defective portion of the product and will not ship back any accessories.

- The customer is responsible for all in-bound shipping charges to D-Link. No Cash on Delivery (“COD”) is allowed. Products sent COD will either be rejected by D-Link or become the property of D-Link. Products shall be fully insured by the customer and shipped to D-Link Systems, Inc.
- **USA residents** send to 17595 Mt. Herrmann, Fountain Valley, CA 92708. D-Link will not be held responsible for any packages that are lost in transit to D-Link. The repaired or replaced packages will be shipped to the customer via UPS Ground or any common carrier selected by D-Link. Return shipping charges shall be prepaid by D-Link if you use an address in the United States, otherwise we will ship the product to you freight collect. Expedited shipping is available upon request and provided shipping charges are prepaid by the customer. D-Link may reject or return any product that is not packaged and shipped in strict compliance with the foregoing requirements, or for which an RMA number is not visible from the outside of the package. The product owner agrees to pay D-Link’s reasonable handling and return shipping charges for any product that is not packaged and shipped in accordance with the foregoing requirements, or that is determined by D-Link not to be defective or non-conforming.
- **Canadian residents** send to D-Link Networks, Inc., 2525 Meadowvale Boulevard Mississauga, Ontario, L5N 5S2 Canada. D-Link will not be held responsible for any packages that are lost in transit to D-Link. The repaired or replaced packages will be shipped to the customer via Purolator Canada or any common carrier selected by D-Link. Return shipping charges shall be prepaid by D-Link if you use an address in Canada, otherwise we will ship the product to you freight collect. Expedited shipping is available upon request and provided shipping charges are prepaid by the customer. D-Link may reject or return any product that is not packaged and shipped in strict compliance with the foregoing requirements, or for which an RMA number is not visible from the outside of the package. The product owner agrees to pay D-Link’s reasonable handling and return shipping charges for any product that is not packaged and shipped in accordance with the foregoing requirements, or that is determined by D-Link not to be defective or non-conforming. RMA phone number: 1-800-361-5265 Hours of Operation: Monday-Friday, 9:00AM – 9:00PM EST.

### What Is Not Covered:

The Limited Warranty provided herein by D-Link does not cover:

Products that, in D-Link’s judgment, have been subjected to abuse, accident, alteration, modification, tampering, negligence, misuse, faulty installation, lack of reasonable care, repair or service in any way that is not contemplated in the documentation for the product, or if the model or serial number has been altered, tampered with, defaced or removed; Initial installation, installation and removal of the product for repair, and shipping costs; Operational adjustments covered in the operating manual for the product, and normal maintenance; Damage that occurs in shipment, due to act of God, failures due to power surge, and cosmetic damage; Any hardware, software, firmware or other products or services provided by anyone other than D-Link; and Products that have been purchased from inventory clearance or liquidation sales or other sales in which D-Link, the sellers, or the liquidators expressly disclaim their warranty obligation pertaining to the product.

While necessary maintenance or repairs on your Product can be performed by any company, we recommend that you use only an Authorized D-Link Service Office. Improper or incorrectly performed maintenance or repair voids this Limited Warranty.

**Disclaimer of Other Warranties:**

EXCEPT FOR THE LIMITED WARRANTY SPECIFIED HEREIN, THE PRODUCT IS PROVIDED "AS-IS" WITHOUT ANY WARRANTY OF ANY KIND WHATSOEVER INCLUDING, WITHOUT LIMITATION, ANY WARRANTY OF MERCHANTABILITY, FITNESS FOR A PARTICULAR PURPOSE AND NON-INFRINGEMENT.

IF ANY IMPLIED WARRANTY CANNOT BE DISCLAIMED IN ANY TERRITORY WHERE A PRODUCT IS SOLD, THE DURATION OF SUCH IMPLIED WARRANTY SHALL BE LIMITED TO THE DURATION OF THE APPLICABLE WARRANTY PERIOD SET FORTH ABOVE. EXCEPT AS EXPRESSLY COVERED UNDER THE LIMITED WARRANTY PROVIDED HEREIN, THE ENTIRE RISK AS TO THE QUALITY, SELECTION AND PERFORMANCE OF THE PRODUCT IS WITH THE PURCHASER OF THE PRODUCT.

**Limitation of Liability:**

TO THE MAXIMUM EXTENT PERMITTED BY LAW, D-LINK IS NOT LIABLE UNDER ANY CONTRACT, NEGLIGENCE, STRICT LIABILITY OR OTHER LEGAL OR EQUITABLE THEORY FOR ANY LOSS OF USE OF THE PRODUCT, INCONVENIENCE OR DAMAGES OF ANY CHARACTER, WHETHER DIRECT, SPECIAL, INCIDENTAL OR CONSEQUENTIAL (INCLUDING, BUT NOT LIMITED TO, DAMAGES FOR LOSS OF GOODWILL, LOSS OF REVENUE OR PROFIT, WORK STOPPAGE, COMPUTER FAILURE OR MALFUNCTION, FAILURE OF OTHER EQUIPMENT OR COMPUTER PROGRAMS TO WHICH D-LINK'S PRODUCT IS CONNECTED WITH, LOSS OF INFORMATION OR DATA CONTAINED IN, STORED ON, OR INTEGRATED WITH ANY PRODUCT RETURNED TO D-LINK FOR WARRANTY SERVICE) RESULTING FROM THE USE OF THE PRODUCT, RELATING TO WARRANTY SERVICE, OR ARISING OUT OF ANY BREACH OF THIS LIMITED WARRANTY, EVEN IF D-LINK HAS BEEN ADVISED OF THE POSSIBILITY OF SUCH DAMAGES. THE SOLE REMEDY FOR A BREACH OF THE FOREGOING LIMITED WARRANTY IS REPAIR, REPLACEMENT OR REFUND OF THE DEFECTIVE OR NONCONFORMING PRODUCT. THE MAXIMUM LIABILITY OF D-LINK UNDER THIS WARRANTY IS LIMITED TO THE PURCHASE PRICE OF THE PRODUCT COVERED BY THE WARRANTY. THE FOREGOING EXPRESS WRITTEN WARRANTIES AND REMEDIES ARE EXCLUSIVE AND ARE IN LIEU OF ANY OTHER WARRANTIES OR REMEDIES, EXPRESS, IMPLIED OR STATUTORY.

**Governing Law:**

This Limited Warranty shall be governed by the laws of the State of California. Some states do not allow exclusion or limitation of incidental or consequential damages, or limitations on how long an implied warranty lasts, so the foregoing limitations and exclusions may not apply. This Limited Warranty provides specific legal rights and you may also have other rights which vary from state to state.

**Trademarks:**

D-Link is a registered trademark of D-Link Corporation/D-Link Systems, Inc. Other trademarks or registered trademarks are the property of their respective owners.

**Copyright Statement:**

No part of this publication or documentation accompanying this product may be reproduced in any form or by any means or used to make any derivative such as translation, transformation, or adaptation without permission from D-Link Corporation/D-Link Systems, Inc., as stipulated by the United States Copyright Act of 1976 and any amendments thereto. Contents are subject to change without prior notice.

Copyright ©2013 by D-Link Corporation/D-Link Systems, Inc. All rights reserved.

**Federal Communication Commission Interference Statement:**

This device complies with Part 15 of the FCC Rules. Operation is subject to the following two conditions: (1) This device may not cause harmful interference, and (2) this device must accept any interference received, including interference that may cause undesired operation.

This equipment has been tested and found to comply with the limits for a Class B digital device, pursuant to Part 15 of the FCC Rules. These limits are designed to provide reasonable protection against harmful interference in a residential installation. This equipment generates, uses and can radiate radio frequency energy and, if not installed and used in accordance with the instructions, may cause harmful interference to radio communications. However, there is no guarantee that interference will not occur in a particular installation. If this equipment does cause harmful interference to radio or television reception, which can be determined by turning the equipment off and on, the user is encouraged to try to correct the interference by one of the following measures:

- Reorient or relocate the receiving antenna.
- Increase the separation between the equipment and receiver.
- Connect the equipment into an outlet on a circuit different from that to which the receiver is connected.
- Consult the dealer or an experienced radio/TV technician for help.

**FCC Caution:** Any changes or modifications not expressly approved by the party responsible for compliance could void the user's authority to operate this equipment.

This transmitter must not be co-located or operating in conjunction with any other antenna or transmitter.

For operation within 5.15 ~ 5.25GHz / 5.47 ~ 5.725GHz frequency range, it is restricted to indoor environment. The band from 5600-5650MHz will be disabled by the software during the manufacturing and cannot be changed by the end user. This device meets all the other requirements specified in Part 15E, Section 15.407 of the FCC Rules.

**FCC Radiation Exposure Statement:**

The product comply with the FCC portable RF exposure limit set forth for an uncontrolled environment and are safe for intended operation as described in this manual. The further RF exposure reduction can be achieved if the product can be kept as far as possible from the user body or set the device to lower output power if such function is available.

### **Industry Canada statement**

This device complies with RSS-210 of the Industry Canada Rules. Operation is subject to the following two conditions:

- (1) This device may not cause harmful interference, and
- (2) this device must accept any interference received, including interference that may cause undesired operation.

Ce dispositif est conforme à la norme CNR-210 d'Industrie Canada applicable aux appareils radio exempts de licence. Son fonctionnement est sujet aux deux conditions suivantes: (1) le dispositif ne doit pas produire de brouillage préjudiciable, et (2) ce dispositif doit accepter tout brouillage reçu, y compris un brouillage susceptible de provoquer un fonctionnement indésirable.

### **Caution:**

- (i) the device for operation in the band 5150-5250 MHz is only for indoor use to reduce the potential for harmful interference to co-channel mobile satellite systems;
- (ii) the maximum antenna gain permitted for devices in the bands 5250-5350 MHz and 5470-5725 MHz shall comply with the e.i.r.p. limit; and
- (iii) the maximum antenna gain permitted for devices in the band 5725-5825 MHz shall comply with the e.i.r.p. limits specified for point-to-point and non point-to-point operation as appropriate.
- (iv) Users should also be advised that high-power radars are allocated as primary users (i.e. priority users) of the bands 5250-5350 MHz and 5650-5850 MHz and that these radars could cause interference and/or damage to LE-LAN devices.

### **Avertissement:**

- Le guide d'utilisation des dispositifs pour réseaux locaux doit inclure des instructions précises sur les restrictions susmentionnées, notamment :
- (i) les dispositifs fonctionnant dans la bande 5 150-5 250 MHz sont réservés uniquement pour une utilisation à l'intérieur afin de réduire les risques de brouillage préjudiciable aux systèmes de satellites mobiles utilisant les mêmes canaux;
  - (ii) le gain maximal d'antenne permis pour les dispositifs utilisant les bandes 5 250-5 350 MHz et 5 470-5 725 MHz doit se conformer à la limite de p.i.r.e.;
  - (iii) le gain maximal d'antenne permis (pour les dispositifs utilisant la bande 5 725-5 825 MHz) doit se conformer à la limite de p.i.r.e. spécifiée pour l'exploitation point à point et non point à point, selon le cas.
  - (iv) De plus, les utilisateurs devraient aussi être avisés que les utilisateurs de radars de haute puissance sont désignés utilisateurs principaux (c.-à-d., qu'ils ont la priorité) pour les bandes 5 250-5 350 MHz et 5 650-5 850 MHz et que ces radars pourraient causer du brouillage et/ou des dommages aux dispositifs LAN-EL.

**Radiation Exposure Statement:**

The product comply with the Canada portable RF exposure limit set forth for an uncontrolled environment and are safe for intended operation as described in this manual. The further RF exposure reduction can be achieved if the product can be kept as far as possible from the user body or set the device to lower output power if such function is available.

**Déclaration d'exposition aux radiations:**

Le produit est conforme aux limites d'exposition pour les appareils portables RF pour les Etats-Unis et le Canada établies pour un environnement non contrôlé.

Le produit est sûr pour un fonctionnement tel que décrit dans ce manuel. La réduction aux expositions RF peut être augmentée si l'appareil peut être conservé aussi loin que possible du corps de l'utilisateur ou que le dispositif est réglé sur la puissance de sortie la plus faible si une telle fonction est disponible.



# Registration

Register your product online at [registration.dlink.com](http://registration.dlink.com)



Product registration is entirely voluntary and failure to complete or return this form will not diminish your warranty rights.

Version 1.0  
March 21, 2013