

Wireless AC1200

Dual Band USB Adapter



DWA-182

Quick Install Guide

D-Link[®]

Package Contents



DWA-182 Wireless AC1200 Dual Band USB Adapter



CD with drivers and manual



Quick Install Guide

If any of the above items are missing, please contact your reseller.

System Requirements

- An available USB slot
- Windows® 8, 7, Vista® or Mac OS® X (10.6-10.9)
- An 802.11ac, 802.11n, or 802.11g wireless network
- 20MB of free hard drive space
- CD-ROM Drive

Before You Begin

Before installing your new D-Link wireless adapter, please verify the following:

- Remove any previous installations of wireless adapters.
- Disable any built-in wireless and/or Ethernet adapters.
- Verify the settings such as the wireless network name (SSID) and security settings of the network(s) you want to connect to.
- You can download the latest driver from **<http://support.dlink.com/DWA-182>**.

Installation - Windows

WARNING: Do NOT plug the adapter into your computer before installing the drivers. You will be prompted to plug in your adapter during the setup.

- 1 Insert the DWA-182 Driver CD into the CD-ROM drive. When the autorun screen appears, click **Install** and follow the on-screen instructions.



Note: If the CD Autorun function does not automatically start on your computer, go to **Start > Run**. In the run box type "D:\autorun.exe" (where D: represents the drive letter of your CD-ROM drive) and click **OK**.

- 2 Select the language you want the setup wizard to display. Click **Next** to continue.
- 3 The *Welcome* screen will appear. Click **Next** to continue.
- 4 You will now be asked to plug the DWA-182 adapter into an available USB port. Once you plug it in, click **Install** to continue.
- 5 The drivers will now be installed. This process may take a minute to complete.
- 6 Once the **InstallShield Wizard Complete** screen appears, the DWA-182 has been successfully installed. Click **Finish** to exit the Install Wizard.

Installation - Mac OS X

WARNING: Do NOT plug the adapter into your computer before installing the drivers. You will be prompted to plug in your adapter during the setup.

Note: Insert the CD before connecting DWA-182 to your Mac.

- 1 Open the disc drive (CD icon) that should appear on your desktop.
- 2 Navigate to the *Mac OS Drivers* folder and install the driver that corresponds to your MacBook's software version. If you are not sure, go to the Apple icon on the top left of your toolbar and click **About this Mac** and then **More Info**.
- 3 Run *Installer.pkg* and follow the instructions.

Connect to Your Wireless Network

There are three ways to connect to a wireless network:

A. WPS Setup - Use if your wireless router supports WPS (Wi-Fi Protected Setup). Simply press the WPS button on your adapter and your router to automatically configure and connect.

B. Wireless Utility (Windows) - Use the D-Link Wireless Connection Manager to display a list of wireless networks. Select the network you want and click **Connect**.

C. Wireless Utility (Mac OS X) - Use the built-in Connection Manager to display a list of wireless networks. Select the network you want and click **Connect**.

A. WPS Setup

Connect to your wireless network using the **WPS button setup** method.

- 1 Press the **WPS** button (or launch the WPS process) on your wireless router or access point. Please consult your router or access point's user manual on how to start the WPS process.



- 2 Within two minutes, click the **WPS** button on your DWA-182 adapter.



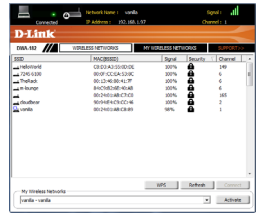
- 3 After two minutes your adapter will be securely connected to your wireless network.

B. Wireless Utility (Windows)

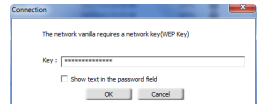
- 1 Double-click the **Wireless Connection Manager** icon on your desktop to bring up the list of available networks.



- 2 Select the wireless network you would like to connect to from the list and click the **Connect** button. It may take a minute while the connection is established.



- 3 If the wireless network you are connecting to has security (encryption) enabled, enter the security password (key) and click **Next** to continue.



Note: The password is case-sensitive and must be typed in exactly the same as on your wireless router or access point.

- 4 You are now connected to your wireless network.

Note: In some cases, the Windows built-in wireless utility may disable the D-Link Utility. Use the Windows utility in the same manner to connect to your wireless network.

C. Wireless Utility (Mac OS X)

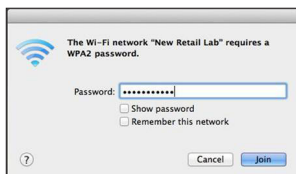
- 1 Click the **Airport Wireless** icon on the top left corner of the screen.



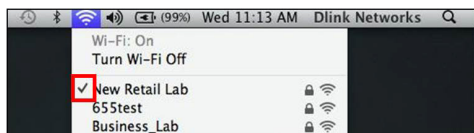
- 2 Select the wireless network you want to connect to.



- 3 If the wireless network is password protected, you will be prompted for a password. Enter the **Password** and click **Join**.



- 4 You are now connected to your wireless network.



Technical Support

This guide is only for the first time configuration. Refer to the user manual to learn more, or visit <http://support.dlink.com> (USA) for more information. Also feel free to contact us through our website.

USA



<http://support.dlink.com>

D-Link®

Version 3.1 (US)

July 29, 2014

©2014 D-Link. All Rights Reserved. D-Link and the D-Link logo are trademarks or registered trademarks of D-Link. All other third-party marks mentioned herein may be trademarks of their respective owners. Maximum wireless signal rate derived from IEEE Standard 802.11ac, 902.11a, 802.11g, and 802.11n specifications. Actual data throughput will vary. Network conditions and environmental factors, including volume of network traffic, building materials and construction, and network overhead, lower actual data throughput rate. Environmental conditions will adversely affect wireless signal range. Product specifications, size and shape are subject to change without notice, and actual product appearance may differ from that depicted on the packaging. This publication may not be reproduced, in whole or in part, without prior express written permission from D-Link Systems, Inc. Visit www.dlink.com for details.