

QUICK INSTALL GUIDE

DWA-542

VERSION 1.0



D-Link®

WIRELESS

System Requirements

- A desktop computer with an available 32-bit PCI slot
- Windows® 2000 or XP
- 300MHz processor and at least 64MB of RAM
- An 802.11n¹ or 802.11g access point (for Infrastructure mode), or another 802.11n or 802.11g wireless adapter (for Ad-Hoc networking mode.)

Package Contents



D-Link DWA-542
RangeBooster N™ Desktop Adapter



Manual, QIG, software,
and warranty on CD

If any of the above items are missing, please contact your reseller.

¹Maximum wireless signal rate derived from IEEE Standard 802.11g and draft 802.11n specifications. Actual data throughput will vary. Network conditions and environmental factors, including volume of network traffic, building materials and construction, and network overhead, lower actual data throughput rate. Environmental factors will adversely affect wireless signal range.

Hardware Overview



WLAN LED

A solid light indicates that wireless is ready. This LED blinks during wireless data transmission.

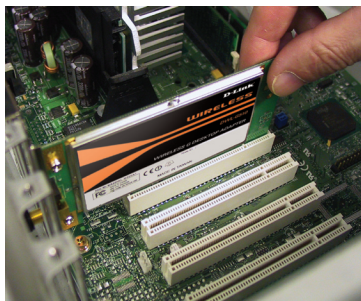
Installation Considerations

The D-Link wireless adapter lets you access your network using a wireless connection from virtually anywhere within the operating range of your wireless network. Keep in mind, however, that the number, thickness and location of walls, ceilings, or other objects that the wireless signals must pass through, may limit the range. Typical ranges vary depending on the types of materials and background RF (radio frequency) noise in your home or business. The key to maximizing wireless range is to follow these basic guidelines:

1. Keep the number of walls and ceilings between the D-Link adapter and other network devices to a minimum - each wall or ceiling can reduce your adapter's range from 3-90 feet (1-30 meters.) Position your devices so that the number of walls or ceilings is minimized.
2. Be aware of the direct line between network devices. A wall that is 1.5 feet thick (.5 meters), at a 45-degree angle appears to be almost 3 feet (1 meter) thick. At a 2-degree angle it looks over 42 feet (14 meters) thick! Position devices so that the signal will travel straight through a wall or ceiling (instead of at an angle) for better reception.
3. Building materials make a difference. A solid metal door or aluminum studs may have a negative effect on range. Try to position access points, wireless routers, and computers so that the signal passes through drywall or open doorways. Materials and objects such as glass, steel, metal, walls with insulation, water (fish tanks), mirrors, file cabinets, brick, and concrete will degrade your wireless signal.
4. Keep your product away (at least 3-6 feet or 1-2 meters) from electrical devices or appliances that generate RF noise.
5. If you are using 2.4GHz cordless phones or X-10 (wireless products such as ceiling fans, lights, and home security systems), your wireless connection may degrade dramatically or drop completely. Make sure your 2.4GHz phone base is as far away from your wireless devices as possible. The base transmits a signal even if the phone is not in use.

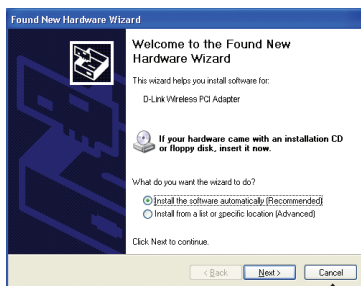
Hardware Installation

You will need to turn off your PC to install the card. Once your computer is turned off, unplug the power cord from the computer. Open the case and insert the D-Link adapter into an available PCI slot. Once inserted, close the case and insert the power cable into the computer. Turn on your computer.



Note: Before installing, write down the serial number and hardware revision (e.g. A1) in case you need to contact technical support.

When your computer boots up you may see the Found New Hardware wizard screen.



Click **Cancel**

Adapter Installation

Note: Please install the DWA-542 Desktop Adapter into your computer before installing the driver software from the D-Link CD. Refer to page 5.

Insert the D-Link DWA-542 Driver CD in the CD-ROM drive. The step-by-step instructions that follow are shown in Windows® XP. The steps and screens are similar for the other Windows operating systems.

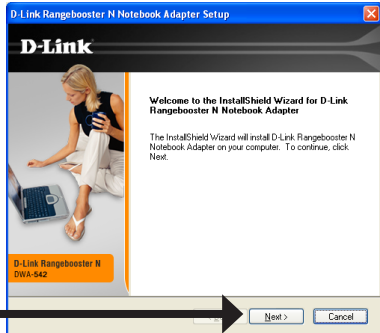
If the CD Autorun function does not automatically start on your computer, go to **Start > Run**. In the run box type “**D:\DWA542.exe**” (where D: represents the drive letter of your CD-ROM drive).

When the autorun screen appears, click **Install Drivers**.



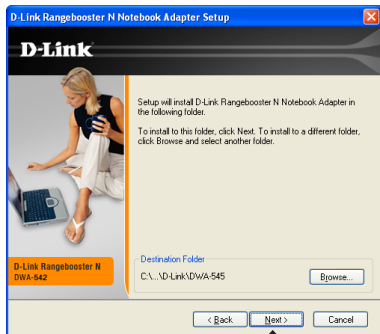
The **InstallShield Wizard** window will appear.

Click **Next**

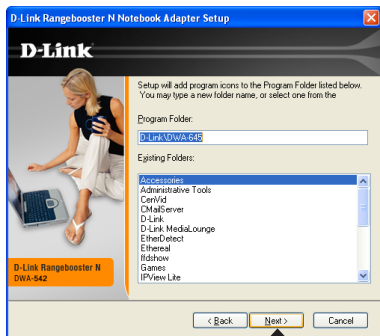


Setup will install to the default location: *C:\Program Files\D-Link\ DWA-542*, where C: represents the drive letter of your hard drive. To install to a different location click **Browse** and specify the location.

Click **Next**



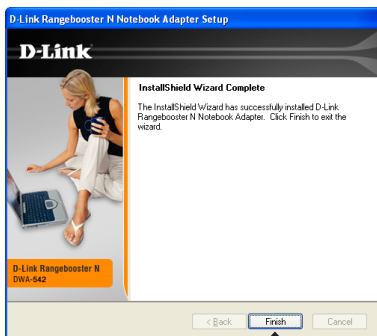
Click **Next**



For Windows® XP: This Software Installation alert screen will appear.



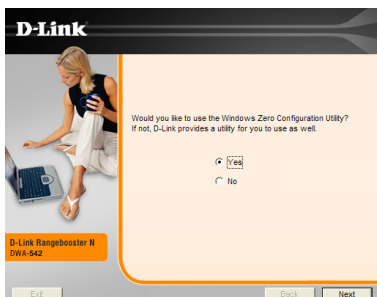
Click **Continue Anyway**



Click **Finish**

The D-Link Configuration Wizard will now appear.

If you are using Windows® XP (SP2), you will have the option to use either the D-Link utility or the built-in Windows® Wireless utility.



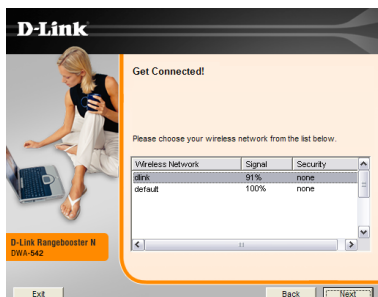
Click **Next**

Enter the network name (SSID) manually. If you enter the SSID incorrectly, you will automatically be brought to the site survey page. Click **Scan** to display the site survey page.



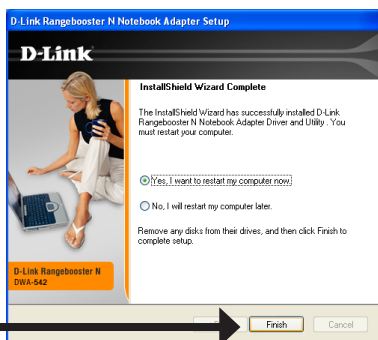
Click **Next**

Click on the network name (SSID) and click **Next**.



Click **Next**

Click **Yes, I want to restart my computer now** to finalize the installation.



Click **Finish**

Connect to a Wireless Network

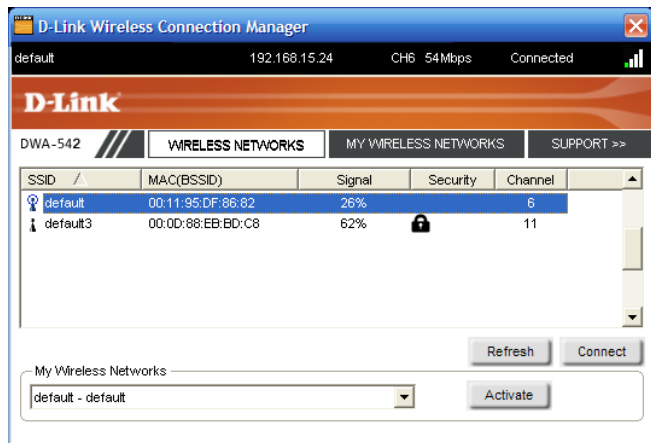
The D-Link DWA-542 uses the Wireless Connection Manager as the management software. The manager provides the user an easy interface to change any settings related to the wireless adapter. After you have completed the installation of the DWA-542, the Wireless Connection Manager is loaded on your desktop.

Double-click on the icon to start the Wireless Connection Manager.



If you are using Windows® XP, please skip to page 13.

This window will allow you to see available wireless networks in your area. Simply click the network (SSID) you want to connect to and click the **Connect** button.



If you are attempting to connect to a secure network, You must supply the encryption key that is on the router or access point you are trying to connect to.

Please refer to the manual on the CD for more information on Wireless Security.

If the network you are connecting to is using WEP, enter the WEP key for the network and click **OK**.

The screenshot shows the 'Profile Setting' dialog box with the 'Basic Settings' section containing 'Profile Name: default' and 'SSID: default'. The 'Network Type' is set to 'Infrastructure'. In the 'Set Security Option' section, 'WEP' is selected. The 'WEP Security' section shows 'Open', 'Shared', and 'Auto' radio buttons, with 'Shared' selected. Below these are fields for 'Key:' (showing '1') and 'Key Length:' (set to '64 bits (40+24) - 10 Hexadecimal'). There is a checkbox for 'Show Text in the password field' and 'OK' and 'Cancel' buttons at the bottom.

If the network you are connecting to is using WPA-PSK, enter the passphrase for the network and click **OK**.

The screenshot shows the 'Profile Setting' dialog box with the same 'Basic Settings' as the previous image. In the 'Set Security Option' section, 'WPA-PSK' is selected. The 'WPA Passphrase Security' section shows 'TKIP' and 'AES' radio buttons, with 'TKIP' selected. Below these is a 'Key:' field filled with asterisks. There is a checkbox for 'Show Text in the password field' and 'OK' and 'Cancel' buttons at the bottom.

If the network you are connecting to is using WPA-PSK2, enter the passphrase for the network and click **OK**.

Profile Setting

Basic Settings

Profile Name:

SSID:

Network Type: ☒ Infrastructure ☐ Adhoc

Set Security Option

☐ WEP

☐ WPA-PSK

☒ WPA2-PSK

☐ WPA

☐ WPA2

☐ None

WPA2 Passphrase Security

☒ TKIP ☐ AES

Key:

☐ Show Text in the password field

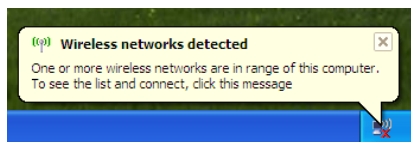
OK Cancel

Windows® XP Configuration Utility

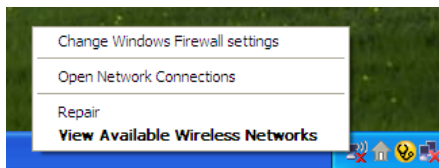
Windows® XP users may use the built-in wireless utility. The following instructions are for Service Pack 2 users.

If you are using Windows® 2000, you must use the D-Link Wireless Connection Manager. Please refer to page 10.

If you receive the **Wireless Networks Detected** bubble, click on the center of the bubble to access the utility.

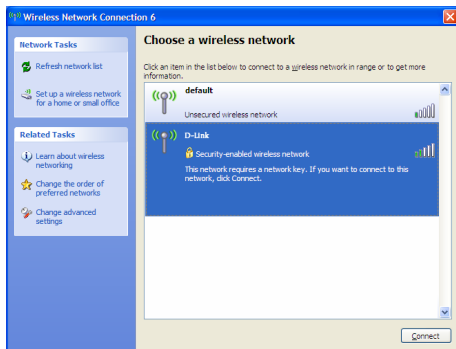


You may also right-click on the wireless computer icon in your system tray (lower-right corner next to the time). Select **View Available Wireless Networks**.



The utility will display any available wireless networks in your area. Click on a network and click the **Connect** button.

Refer to the **Wireless Security** section in the manual for information on connecting to a secure network.

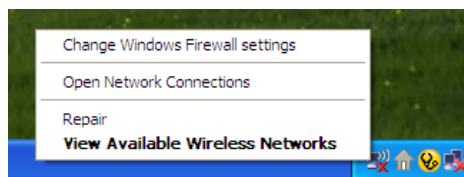


If you want to use the D-Link Wireless Connection Manager instead of the Windows® XP wireless utility, refer to the next page.

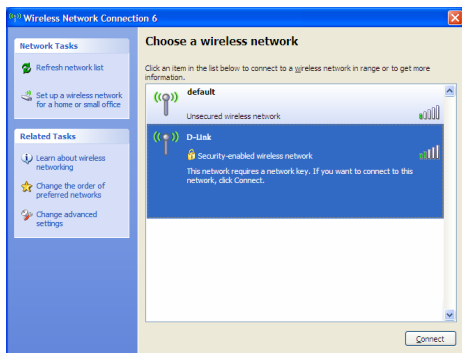
Disabling The Windows® XP Utility

If you want to use the D-Link Wireless Connection Manager you must disable the Windows® XP wireless utility.

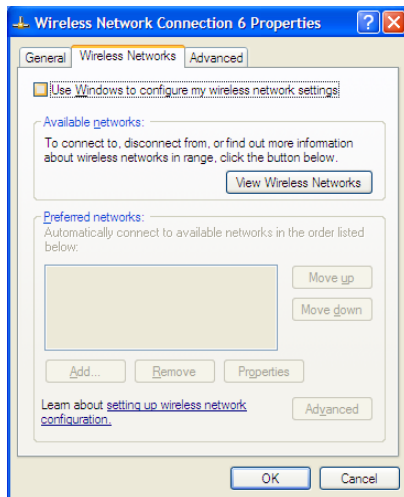
Right-click on the wireless computer icon in your system tray (lower right corner next to the time). Select **View Available Wireless Networks**.



In the **Choose a Wireless Network** window click **Change Advanced Settings** on the left side below *Related Tasks*.



In the *Wireless Network Connection Properties* window, uncheck **Use Windows to configure my wireless network settings** and then click **OK**.



You can now use the D-Link Wireless Connection Manager to configure your wireless adapter.

Double-click the **Wireless Connection Manager** icon on your desktop.



Technical Support

D-Link's website contains the latest user documentation and software updates for D-Link products.

U.S. and Canadian customers can contact D-Link Technical Support through our website or by phone.

United States

Telephone

(877) 453-5465

Twenty four hours a day, seven days a week.

World Wide Web

<http://support.dlink.com>

E-mail

support@dlink.com

Canada

Telephone

(800) 361-5265

Monday through Friday, 7:30am to 9:00pm EST.

World Wide Web

<http://support.dlink.ca>

E-mail

support@dlink.ca



Version 1.0
April 26, 2006

Copyright ©2006 D-Link Corporation/D-Link Systems, Inc. All rights reserved. D-Link and the D-Link logo are registered trademarks of D-Link Corporation or its subsidiaries in the United States and other countries. Other trademarks are the property of their respective owners. This product is based on IEEE draft 802.11n specifications and is not guaranteed to be forward compatible with future versions of IEEE 802.11n specifications. Compatibility with draft 802.11n devices from other manufacturers is not guaranteed. All references to speed and range are for comparison purposes only. Product specifications, size and shape are subject to change without notice, and actual product appearance may differ from that depicted herein.