





# Quick Install Guide

## Wireless N 300 Dual Band PCI Express Desktop Adapter



Thank you for purchasing the Wireless N 300 Dual Band PCI Express Desktop Adapter. Follow the easy steps in this guide to properly set up your adapter. Please verify that all the package contents below are available.

### Package Contents

-  DWA-566 Wireless N 300 Dual Band PCI Express Desktop Adapter
-  Two Antennas
-  Low Profile Bracket
-  CD with drivers and software

If any of the above items are missing, please contact your reseller.

### System Requirements

- A desktop computer with an available PCI Express slot
- Windows® 7, Windows Vista® (32-bit), XP (32/64-bit with Service Pack 2 or higher)
- 300MHz processor and at least 64MB of RAM

### What This Product Does

The D-Link DWA-566 is an 802.11n client device that delivers unrivaled wireless performance for your desktop computer. Once connected, access your wireless network’s high-speed Internet connection while sharing photos, files, music, video, printers, and storage.

### Before You Begin

Before installing your new D-Link wireless adapter, please verify the following:

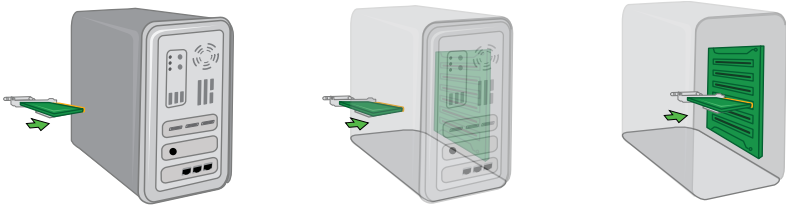
- Remove any previous installations of wireless adapters.
- Disable any built-in wireless adapters.
- Verify the settings such as the wireless network name (SSID) and security settings of the network(s) you want to connect to.

**Note:** If you’ve installed a different manufacturer’s adapter or a different model D-Link adapter, make sure the software is uninstalled before installing the new software. Some utilities may cause a conflict with the new software. Windows® 7, Windows Vista® and XP users may use the built-in wireless utility.

### Installation

#### Step 1:

Please turn off your computer and unplug the power cord from the computer. Insert your Wireless Desktop Adapter into an available PCI Express slot inside your computer.



**Note:** Before installing, write down the serial number and hardware revision (e.g. A1) in case you need to contact technical support.

#### Step 2:

Once inserted, close the case and insert the power cable back into the computer. Turn on your computer and wait for Windows® to boot up. Insert the DWA-566 Driver CD into the CD-ROM drive. If the CD Autorun function does not automatically start on your computer, go to **Start > Run**. In the run box type “**D:\autorun.exe**” (where D: represents the drive letter of your CD-ROM drive) and click **OK**. When the autorun screen appears, click **Install** and follow the on-screen instructions to install the wireless adapter drivers and software.

**Note:** If the *Found New Hardware* screen appears, click **Cancel**.

#### Step 3:

After installation, the D-Link DWA-566 uses the Wireless Connection Manager as the management software. The manager provides the user with an easy interface to change any settings related to the wireless adapter. Clicking on the **Wireless Connection Manager** icon on the desktop will start the Configuration.

### Technical Support

Having trouble installing your new product? D-Link’s website contains the latest user documentation and software updates for D-Link products. U.S. and Canadian customers can contact D-Link Technical Support through our website or by phone.

#### United States

Telephone: (877) 453-5465  
Internet: <http://support.dlink.com>

#### Canada

Telephone: (800) 361-5265  
Internet: <http://support.dlink.ca>

Copyright ©2011 All rights reserved. D-Link and the D-Link logo are registered trademarks of D-Link Corporation or its subsidiaries. Other trademarks are the property of their respective owners. Maximum wireless signal rate derived from IEEE Standard 802.11g and 802.11n specifications. Actual data throughput will vary. Network conditions and environmental factors, including volume of network traffic, building materials and construction, and network overhead, lower actual data throughput rate. Environmental factors will adversely affect wireless signal range. Product specifications, size and shape are subject to change without notice, and actual product appearance may differ from that depicted on the packaging. Visit [dlink.com](http://dlink.com) (US) or [dlink.ca](http://dlink.ca) (Canada) for more details.