

Quick Start Guide

VR Air Bridge

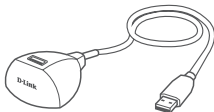
Powered by Quest Link Software

DWA-F18

Contents in the box



x1



x1



x1

Best placement for VR Air Bridge

Use these tips to get the best performance

- In the same room as the VR headset
- Line of sight (unobstructed view between VR Air Bridge and VR headset)
- Desk height
- Keep the VR Air Bridge vertical using the companion stand

FCC INTERFERENCE STATEMENT

This equipment has been tested and found to comply with the limits for a Class B digital device, pursuant to Part 15 of FCC Rules. These limits are designed to provide reasonable protection against harmful interference in a residential installation. This equipment generates, uses, and can radiate radio frequency energy and, if not installed and used in accordance with the instructions, may cause harmful interference to radio communications. However, there is no guarantee that interference will not occur in a particular installation. If this equipment does cause harmful interference to radio or television reception, which can be determined by turning the equipment off and on, the user is encouraged to try to correct the interference by one or more of the following measures:

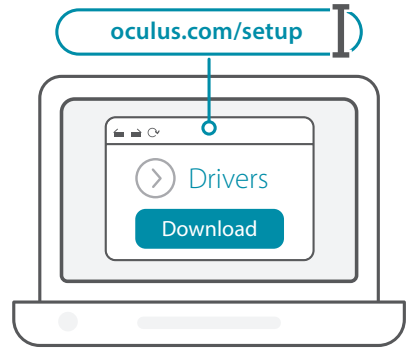
1. Reorient or relocate the receiving antenna.
2. Increase the separation between the equipment and receiver.
3. Connect the equipment into an outlet on a circuit different from that to which the receiver is connected.
4. Consult the dealer or an experienced radio technician for help.

FCC Caution

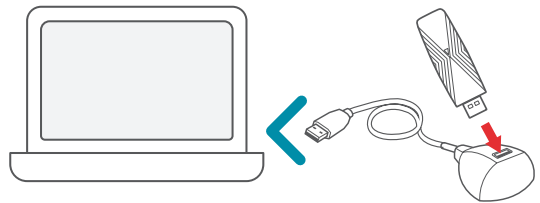
This device and its antenna must not be co-located or operating in conjunction with any other antenna or transmitter. This device complies with Part 15 of the FCC Rules.

Set-up

- 1 Go to **oculus.com/setup** to download and install the Quest Link Software. For those who have the software already, ensure you are running the most recent version, if not, update and reboot your computer.



- 2 Connect the VR Air Bridge to a USB 3 port on your computer (they are blue).



- Open the Quest Link Software and check that VR Air Bridge is detected

Support

For more information about PC compatibility requirements with Quest headsets, please visit **support.oculus.com**

For additional support, go to:
https://support.dlink.com

Operation is subject to the following two conditions:

1. This device may not cause harmful interference, and
2. This device must accept any interference received, including interference that may cause undesired operation. Any changes or modifications not expressly approved by the party responsible for compliance could void the authority to operate equipment.

This device is restricted to indoor use.

Federal Communication Commission (FCC) Radiation Exposure Statement

This equipment complies with FCC radiation exposure limits set forth for an uncontrolled environment. This equipment should be installed and operated with minimum distance 20 cm between the radiator and your body. This device complies with Part 15 of the FCC rules. Operation is subject to the following two conditions:

1. This device may not cause harmful interference, and
2. This device must accept any interference received, including interference that may cause undesired operation.

For products available in the USA/Canada market, only channel 1–11 can be operated. Selection of other channels is not possible.