

D-Link Quick Installation Guide

This product works with the following operating system software: **Windows XP, Windows 2000, Windows Me, Windows 98se**



DWL-120
2.4GHz USB
Wireless Adapter

Before You Begin

You must have at least the following:

- You will need a computer with an available USB port to connect the DWL-120 Wireless USB adapter.
- At least a 300 MHz processor and 32 MB of memory
- An 802.11b Access Point (for Infrastructure Mode) or another 802.11b wireless adapter (for Ad-Hoc; Peer-to-Peer networking mode.)

Check Your Package Contents

These are the items included with your DWL-120 purchase:



DWL-120 Wireless USB Adapter



CD-ROM (containing Drivers, Manual and Warranty)



Mini-USB Cable

If any of the above items are missing, please contact your reseller.

1 Insert the D-Link CD-ROM Into Your Computer

Turn on the computer and Insert the D-Link Air DWL-120 Driver CD in the CD-ROM drive.

The step-by-step instructions that follow are shown in **Windows XP**. The steps and screens are similar for the other Windows operating systems




Do **NOT** install the DWL-120 USB Adapter into your computer before installing the driver software on the D-Link CD!

The Install Screen will appear.

Click **Install Driver/PC Utility**

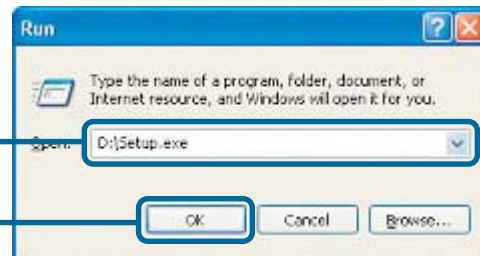
If the CD Autorun function does not automatically start on your computer, type "D:\Setup.exe." If it does start, proceed to the next screen.

Type "**D:\Setup.exe.**"

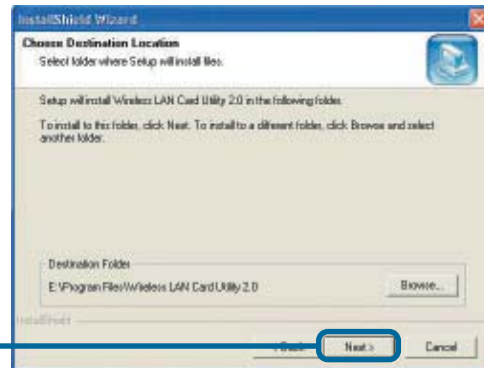
 The letter "**D**" represents the letter of the CD-ROM drive. Your CD-ROM drive may be a different drive letter.

Click **OK**

Click **Next**



Click **Next**



Click **No**, I will restart my computer later



Click **Finish**

Shut down your computer

Mini-USB Port
Used to connect the DWL-120 to your computer.



Antenna
Used to wirelessly connect to 802.11b networks.

Link/Activity LED
Link - Indicates that the DWL-120 is properly installed in the computer.
Activity - blinks when data is being transmitted through the wireless connection.

2 Installing the DWL-120 Wireless USB Adapter to Your Computer

A. Make sure to turn off your computer.



B. Install the DWL-120, firmly insert one end of the USB cable (larger plug) into your computer's USB Port.



C. Firmly insert the other end of the USB cable (smaller plug) into the DWL-120.

3 Restart Your Computer

When you restart your computer this **Found New Hardware Wizard (Windows XP)** screen will appear:

Select **Install the software automatically (Recommended)**

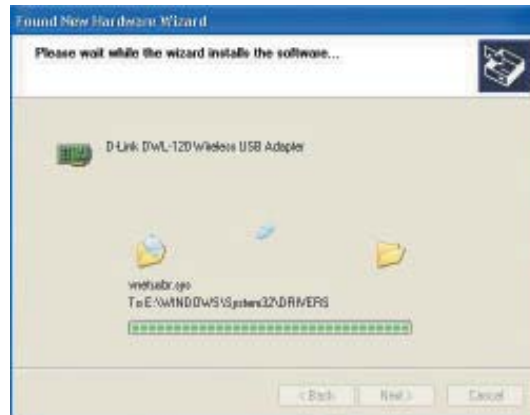
Click **Next**



Windows XP will automatically load the driver files.



The Windows XP drivers are Microsoft WHQL (Windows Hardware Quality Labs) Certified.



Click **Finish**



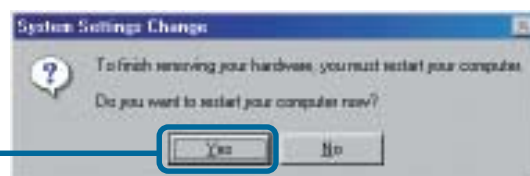
For Windows 2000, this **Digital Signature Not Found** screen may appear during the installation.



Click **Yes** to continue the installation

For Windows Me and 98, this screen may appear.

Click **Yes** to finalize the installation

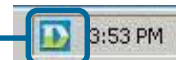




Your Installation is Complete!

After you've continued in Windows XP (or after the computer restarts in the other Windows operating systems), the D-Link Air DWL-120 **Configuration Utility** will automatically start and the utility icon will appear in the bottom right hand corner of the desktop screen (systray). **If this icon appears GREEN, then you have successfully installed the DWL-120, are connected to a wireless network and are ready to communicate!**

Double-click the **utility icon** to use the configuration utility.



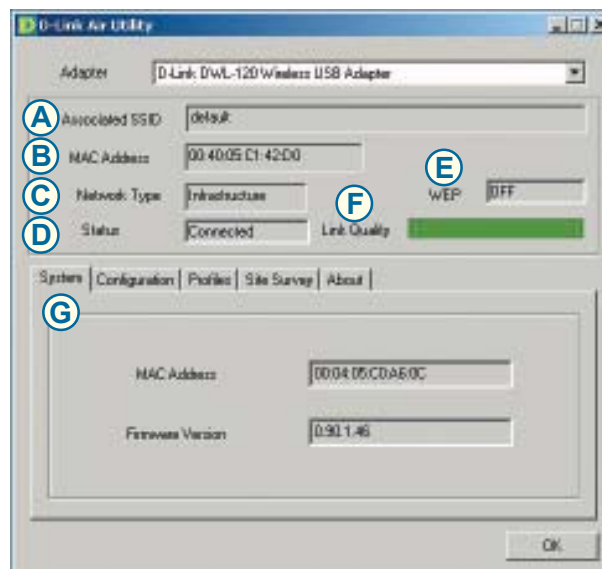
Appendix Using the Configuration Utility

A. Associated SSID: The Service Set Identifier is the name assigned to the wireless network. The factory SSID setting is set to **default**

B. Mac Address: Displays the MAC Address of the Access Point that is associated with the DWL-120.

C. Network Type: The factory setting is set to **Infrastructure**. Ad-Hoc mode is used for peer-to-peer networking.

D. Status: Displays the current connection state of the DWL-120.



E. WEP: (Wireless Encryption Protocol) Displays encryption status.

F. Link Quality: Displays the wireless signal strength for the DWL-120 wireless connection to the access point.

G. System: Displays the MAC Address and Firmware version for the DWL-120.

H. Network Type:

The factory setting is set to **Infrastructure**. Ad-Hoc mode is used for peer-to-peer networking.

I. SSID: The Service Set Identifier is the name assigned to the wireless network. The factory SSID setting is set to **default**. Make changes here to match the SSID on existing Wireless Router or Access Point.

J. TxRate: You can adjust the transmission rate to get the best signal possible depending on your usage and your environment.



K. Default Settings:

Reverts the DWL-120 back to its factory default settings.

L. WEP Settings:

Will allow you to configure the Encryption for your DWL-120. By default WEP is disabled.

M. Advanced Settings:

To configure advanced settings for Power, RTS and Fragmentation Threshold.

IP Address Configuration

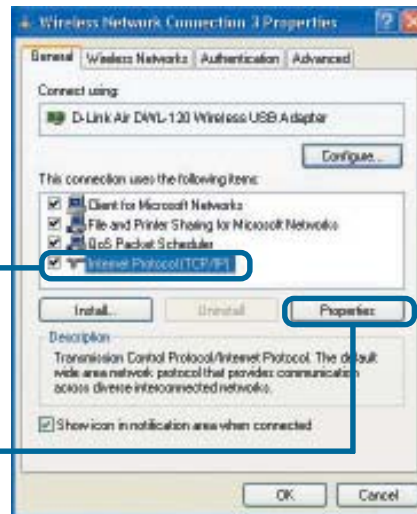
To connect to a network, **make sure the proper network settings are configured for DWL-120.**

For Microsoft Windows XP:

Go to **Start > right click on My Network Places > select Properties > Double-click on the Network Connection associated with the DWL-120.**

Click **Internet Protocol (TCP/IP)**

Click **Properties**



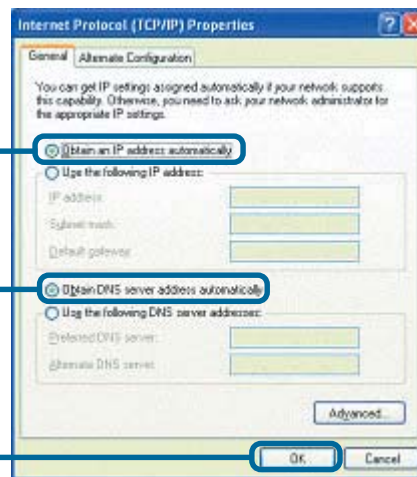
Dynamic IP address setup

Used when a **DHCP server** is available on the local network. (i.e. Router)

Select **Obtain an IP address automatically** (if the Wireless Router or Access Point has DHCP server enabled)

Select **Obtain DNS server address automatically**

Click **OK**



Static IP address setup

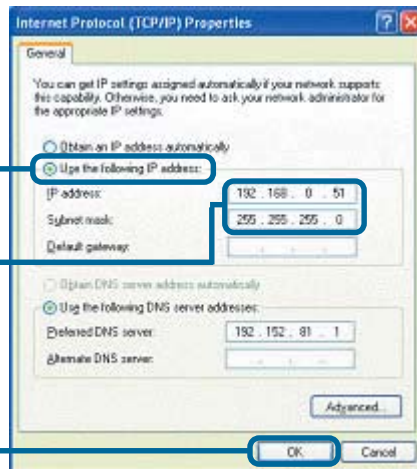
Used when a **DHCP server** is not available on the local network.

Select **Use the following IP address**

IP address: **192.168.0.51**
Subnet mask: **255.255.255.0**

Input a static IP address in the same range as the Wireless Router or Access Point.

Click **OK**

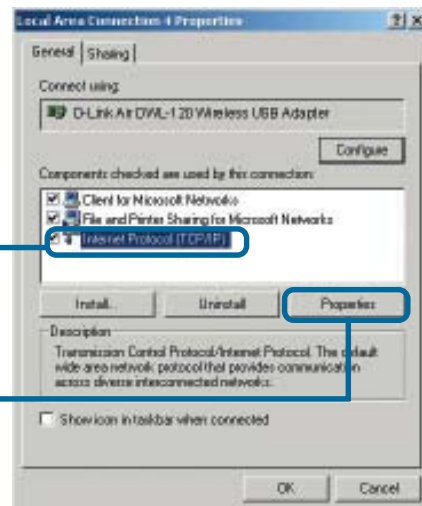


For Windows 2000 users:

Go to **Start > Settings > Network and Dial-up Connections** > Double-click on the **Local Area Connection** associated with the DWL-120 > select **Properties**

Click **Internet Protocol (TCP/IP)**

Click **Properties**



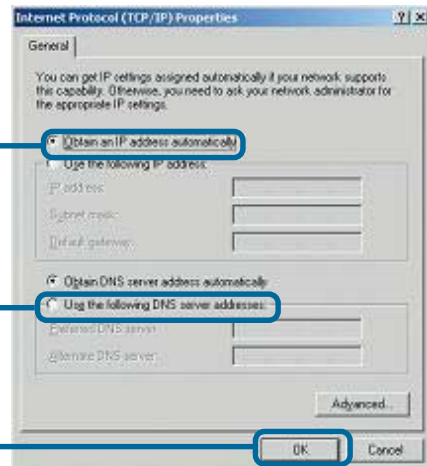
Dynamic IP address setup

Used when a **DHCP server** is available on the local network. (i.e. Router)

Select **Obtain an IP address automatically** (if the Wireless Router or Access Point has DHCP server enabled)

Select **Obtain DNS server address automatically**

Click **OK**



Static IP address setup

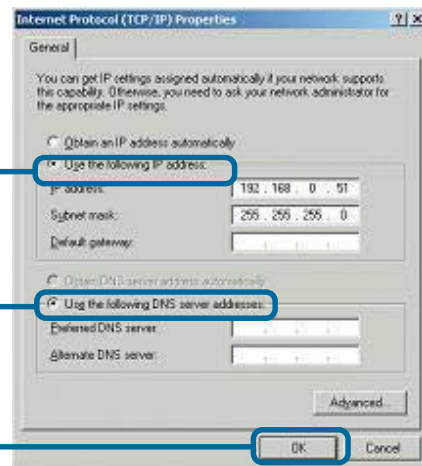
Used when a **DHCP server** is not available on the local network.

Select **Use the following IP address**

IP address: 192.168.0.51
Subnet mask: 255.255.255.0

Input a static IP address in the same range as the Wireless Router or Access Point.

Click **OK**



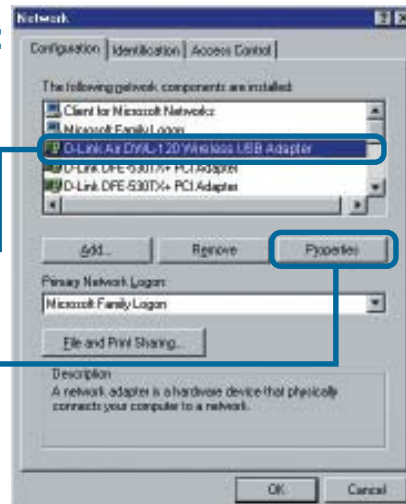
For Windows Me and 98se users:

Click **Internet Protocol (TCP/IP)**

Go to **Start > Settings > Control Panel** > Double-click on the **Local Area Connection** associated with the DWL-120 > select **Properties**

Click **Internet Protocol (TCP/IP)**

Click **Properties**



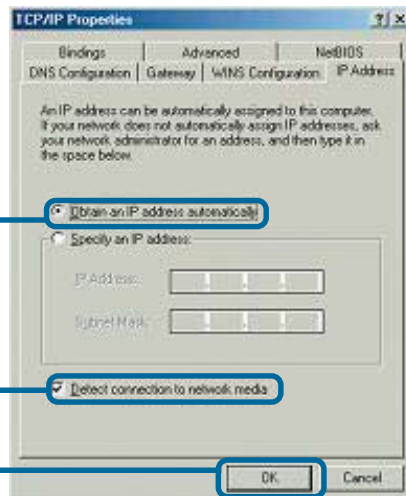
Dynamic IP address setup

Used when a **DHCP server** is available on the local network. (i.e. Router)

Select **Obtain an IP address automatically** (if the Wireless Router or Access Point has DHCP server enabled)

Select **Detect connection to network media**

Click **OK**



Static IP address setup

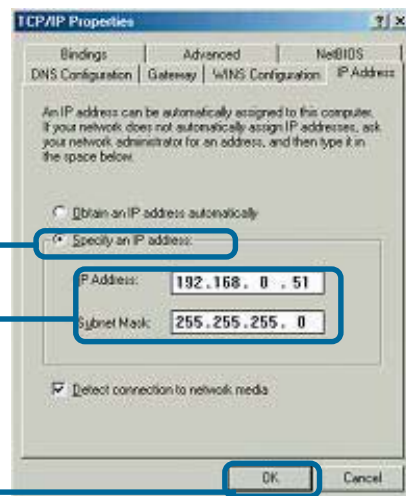
Used when a **DHCP server** is not available on the local network.

Select **Use the following IP address**

IP address: **192.168.0.51**
Subnet mask: **255.255.255.0**

Input a static IP address in the same range as the Wireless Router or Access Point.

Click **OK**



Notes

Technical Support

You can find the most recent software and user documentation on the **D-Link** website.

D-Link provides free technical support for customers within the United States for the duration of the warranty period on this product.

U.S. customers can contact **D-Link** technical support through our web site or by phone.

D-Link Technical Support over the Telephone:

(877) 453-5465

24 hours a day, seven days a week

D-Link Technical Support over the Internet:

<http://support.dlink.com>

email: support@dlink.com

