

Contents of Package:

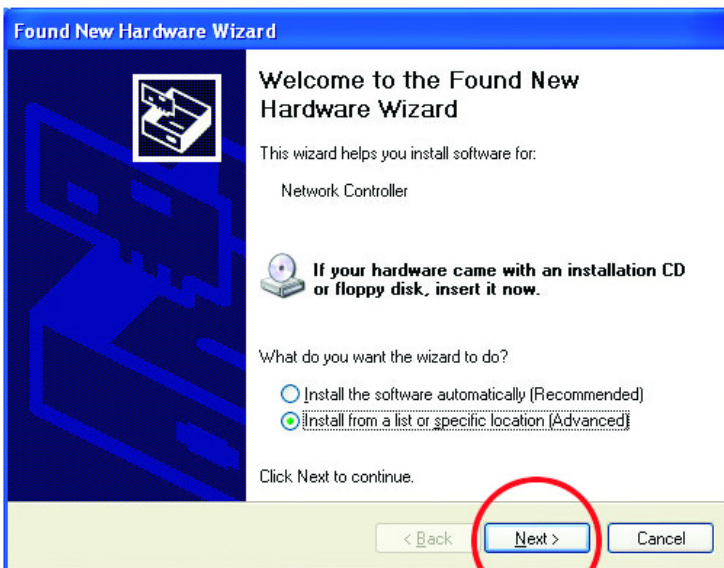
- DWL-120 11Mbps Wireless USB Adapter
- Printed Quick Installation Guide
- CD with Manual and Drivers

If any of the above items are missing, please contact your reseller.

1

Installing the Drivers

Plug in the DWL-120 Wireless USB Adapter and **turn on** your computer.
Insert the DWL-120 driver CD into the CD-ROM drive.



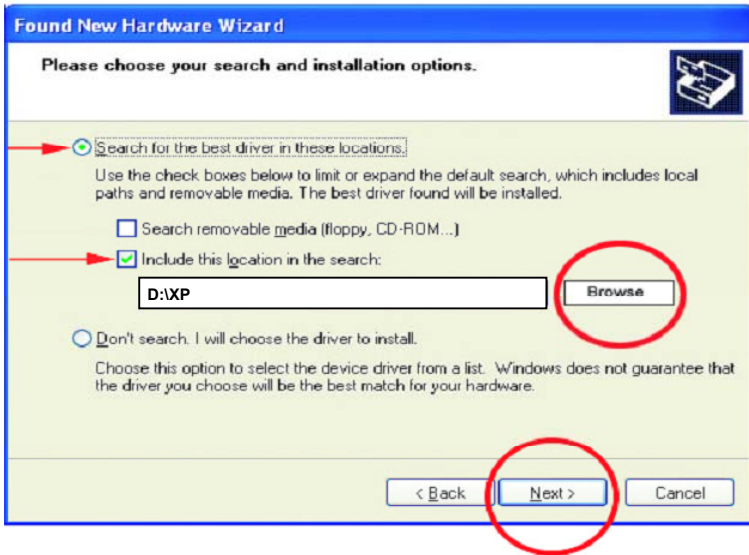
The following **“Welcome”** screen will appear. Select **“Install from a list or specific location.”**

NOTE: If this screen does not appear, go to **Start > Settings > Control Panel > Add Hardware**. Double-click on the icon.

Click Next

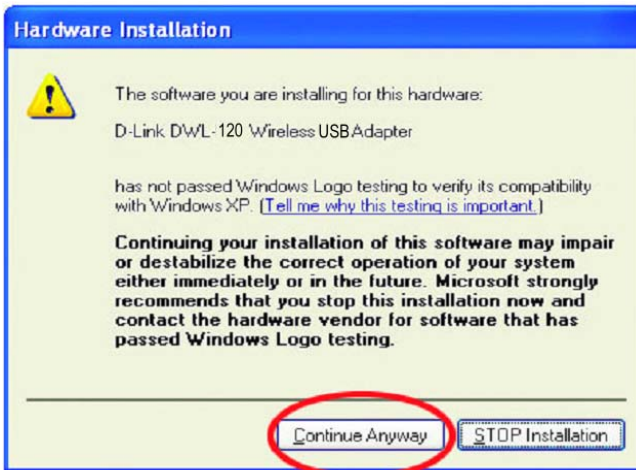
1

Installing the Drivers (continued)



Select “**Search for the best drivers in these locations.**”

Browse for the drivers on the driver CD i.e. D:\XP where D: refers to the CD-ROM drive. **Click Next.**



Click on “Continue Anyway.” (D-Link software is currently undergoing Windows Logo testing. Microsoft certification is pending.)

1

Installing the Drivers *(continued)*

Windows will load the necessary files.



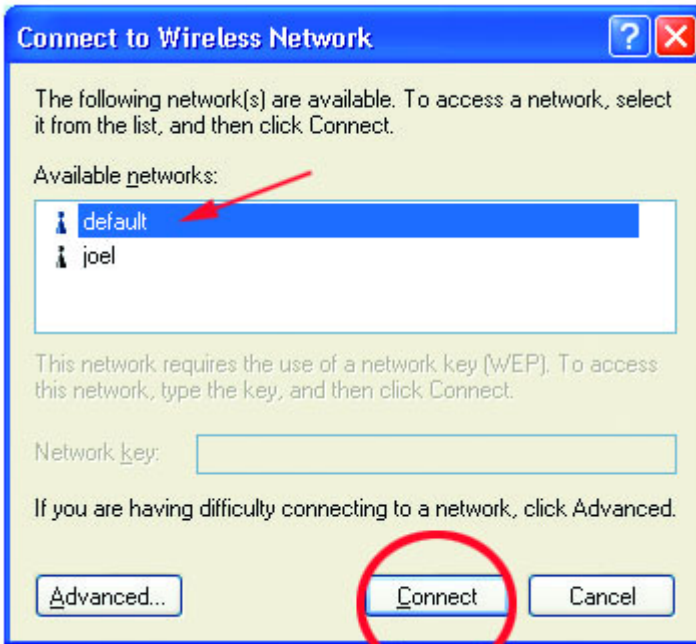
Click **“Finish”** to complete the installation.

2

Connecting to the Wireless Network

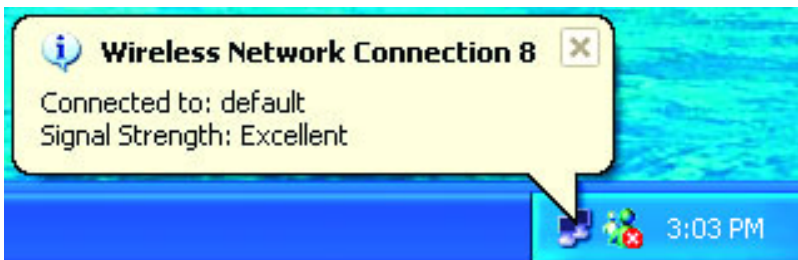
To connect to your wireless network, please do the following:

Double-click on the **icon** in the task bar.



The “**Connect to Wireless Network**” window will contain a list of all the available Wireless Networks. Select the proper network for your needs. In this example, “**default**” network was selected as shown.

Click “Connect.”



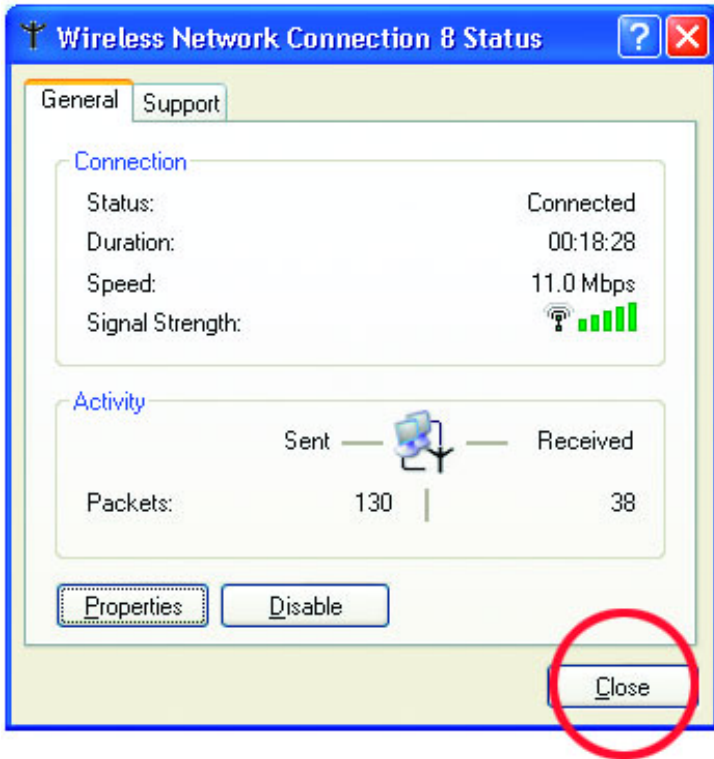
This notice is displayed to confirm the wireless connection

Double-click on the icon in the task bar to see status and information about your connected network. The window on the next page will appear.

2

Connecting to the Wireless Network *(continued)*

The window below will appear showing the current status of your connected network.



Technical Support

You can find the most recent software and user documentation on the **D-Link** website.

D-Link provides free technical support for customers within the United States during the warranty period on this product.

U.S. customers can contact D-Link Technical Support through our web site, or by phone.

D-Link Technical Support over Telephone:

(800) 758-5489

24 hours a day, seven days a week.

D-Link Technical Support over the Internet:

<http://support.dlink.com>

Notes

