

D-Link

Quick Installation Guide

This product works with the following operating system software: **Windows XP, Windows 2000, Windows Me, Windows 98se**



DWL-120+
2.4GHz USB
Wireless Adapter

Before You Begin

You must have at least the following:

- You will need a computer with an available USB port to connect the DWL-120+ Wireless USB adapter.
- At least a 300 MHz processor and 32 MB of memory
- An 802.11b Access Point (for Infrastructure Mode) or another 802.11b wireless adapter (for Ad-Hoc; Peer-to-Peer networking mode.)
- Properly Installed and Working USB Controller.

Check Your Package Contents

These are the items included with your DWL-120+ purchase:



DWL-120+ Wireless USB Adapter



CD-ROM (containing Drivers, Manual and Warranty)



Mini-USB Cable

If any of the above items are missing, please contact your reseller.

1

Insert the D-Link CD-ROM Into Your Computer

Turn on the computer and **Insert** the **D- Link Air DWL-120+ Driver CD** in the CD-ROM drive.

The step-by-step instructions that follow are shown in **Windows XP**. The steps and screens are similar for the other Windows operating systems



Do **NOT** install the DWL-120+ USB Adapter into your computer before installing the driver software on the D-Link CD!

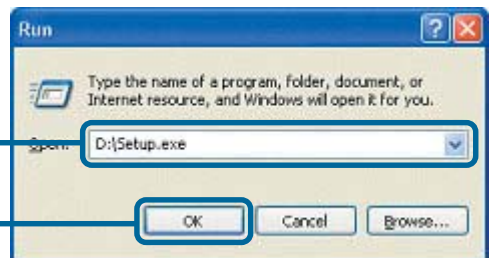
The Install Screen will appear.

Click **Install Driver/PC Utility**



If the CD Autorun function does not automatically Go to **Start > Run** on your computer, then type **"D:\Setup.exe."** If it does start, proceed to the next screen.

Type **"D:\Setup.exe."**

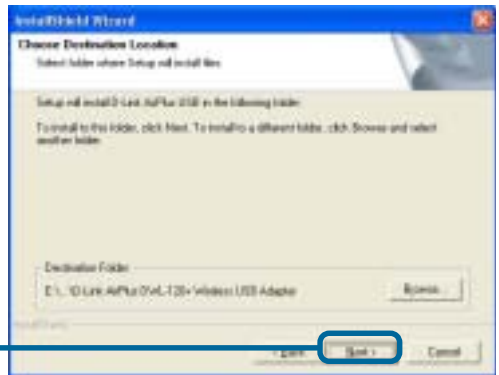


! The letter **"D"** represents the letter of the CD-ROM drive. Your CD-ROM drive may be a different drive letter.

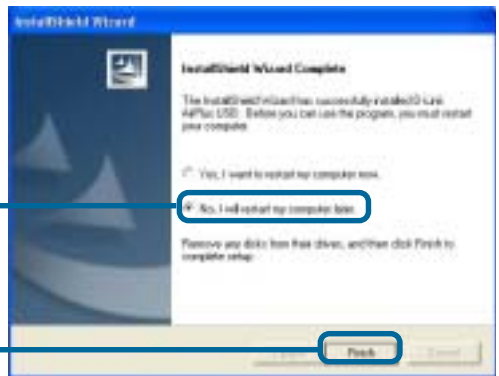
Click **OK**

Click **Next**





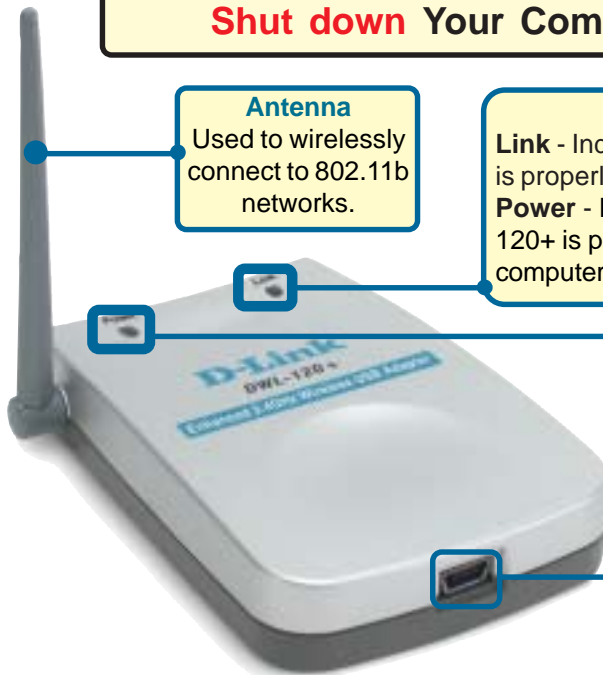
Click **Next**



Click **No, I will restart my computer later**

Click **Finish**

Shut down Your Computer



Antenna

Used to wirelessly connect to 802.11b networks.

Link/Power LED

Link - Indicates that the DWL-120+ is properly installed in the computer.
Power - Indicates that the DWL-120+ is properly installed in the computer.

Mini-USB Port

Used to connect the DWL-120+ to your computer.

2

Installing the DWL-120+ Wireless USB Adapter to Your Computer

A. Make sure to turn off your computer.



B. Firmly insert one end of the USB cable (larger plug) into your computer's USB Port.



C. Firmly insert the other end of the USB cable (smaller plug) into the DWL-120+.

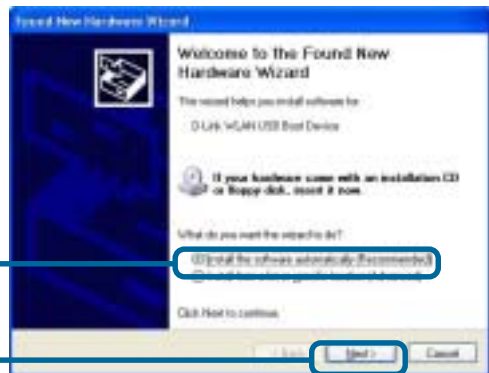
3

Restart Your Computer

When you restart your computer this **Found New Hardware Wizard (Windows XP)** screen will appear:

Select **Install the software automatically (Recommended)**

Click **Next**



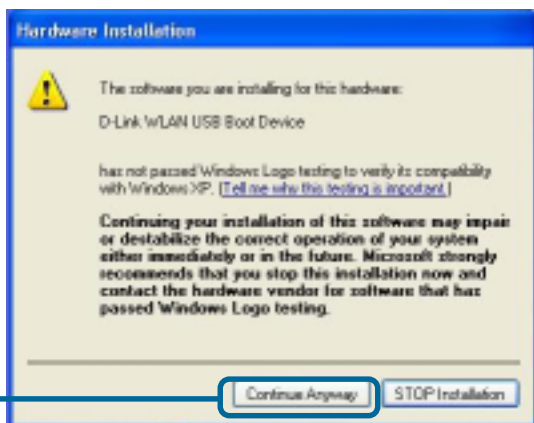
Windows XP will automatically load the driver files.



Click **Finish**



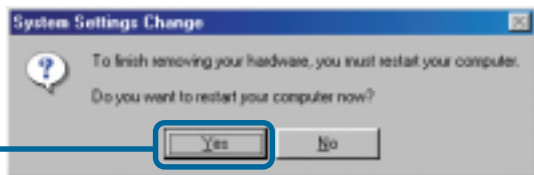
For Windows XP/2000, a screen similar to this **Digital Signature Not Found** screen may appear during the installation.



Click **Yes** to continue the installation

For Windows Me and 98SE, this screen may appear.

Click **Yes** to finalize the installation



4

Your Installation is Complete!

After you've continued in Windows XP (or after the computer restarts in the other Windows operating systems), the D-Link *Air* DWL-120+ **Configuration Utility** will automatically start and the utility icon will appear in the bottom right hand corner of the desktop screen (systray). **If this icon appears GREEN, then you have successfully installed the DWL-120+, are connected to a wireless network and are ready to communicate!**

If the utility icon does not appear, double-click the **shortcut icon** that has appeared on your desktop.



Double-click the **utility icon** to use the configuration utility.



For Windows XP, if you wish to use the **AirXpert Utility**, please do the following steps.

Click the **XP Networking icon** to use the Zero Configuration Wireless Settings.



Click **Advanced**



4

Your Installation is Complete!(cont.)

Uncheck “Use Windows to configure my wireless network settings.”



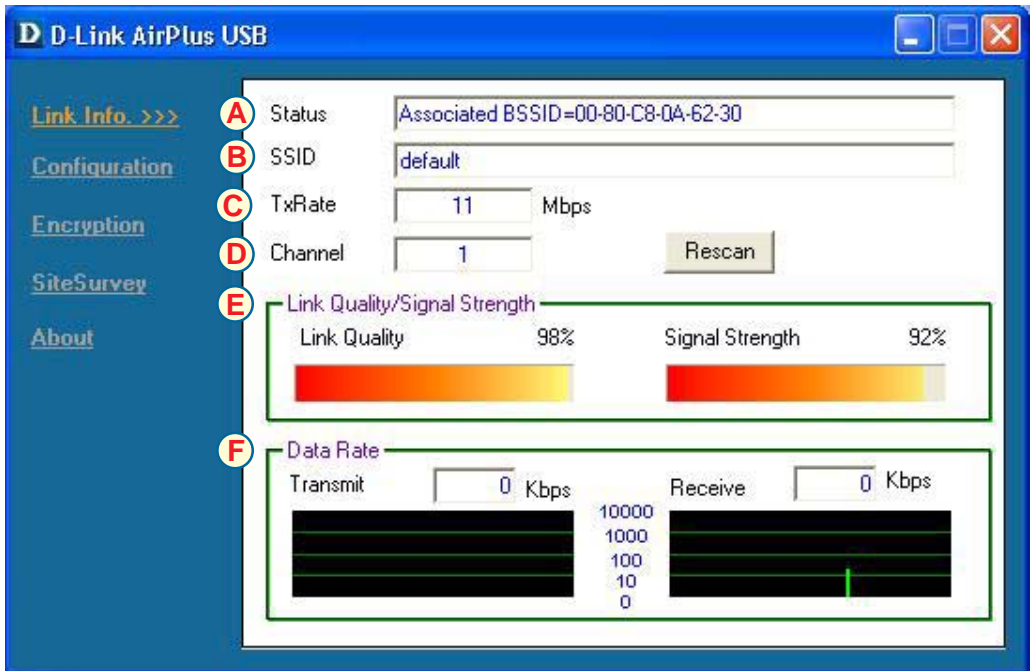
Click OK

Appendix

Using the Configuration Utility

A. Status: Displays the MAC Address of the Access Point that is associated with the DWL-120+.

B. SSID: The Service Set Identifier is the name assigned to the wireless network. The factory SSID setting is set to **default**



C. TxRate: The default setting is **11Mbps**; however, TxRate settings are automatically determined by the DWL-120+ depending on the distance from the access point.

D. Channel: Displays the channel information. By default, the channel is set to **6** and selection is automatically determined by the Access Point.

E. Link Quality / Signal Strength: Displays the wireless signal strength for the DWL-120+ wireless connection to the access point.

Appendix (cont.)

B. SSID: The Service Set Identifier is the name assigned to the wireless network. The factory SSID setting is set to **default**.

H. Wireless Mode: The factory setting is set to **Infrastructure Mode**. Ad-Hoc mode is used for peer-to-peer networking.

I. Channel: By Default, the channel is set to 6. Channel selection is automatically determined by the DWL-120+ depending on the channel setting of the access point selected for association. To change the channel settings, the Wireless Mode must be set to Ad-Hoc.

The screenshot shows the 'D-Link AirPlus USB' configuration window. On the left is a navigation pane with links: 'Link Info.', 'Configuration >>>', 'Encryption', 'SiteSurvey', and 'About'. The 'Configuration >>>' link is selected. The main area displays several settings, each with a lettered icon in a circle to its left:

- G** SSID: A text box containing 'default'.
- H** Wireless Mode: A dropdown menu showing 'Infrastructure'.
- I** Channel: A dropdown menu showing '1'.
- J** TxRate: A dropdown menu showing '11 Mbps'.
- K** Preamble: A dropdown menu showing 'Long Preamble'.
- L** Power Mode: A dropdown menu showing 'Continuous Access Mode'.

At the bottom of the configuration area are two buttons: 'Apply' and 'Cancel'.

J. TxRate: You can adjust the transmission rate to get the best signal possible depending on your usage and environment.

K. Preamble: By default, D-Link AirPlus Products are set to **Long Preamble**. The Preamble defines the length of the CRC block (Cyclic Redundancy Check is a common technique for detecting data transmission errors) for communication between the Access Point and wireless network adapters. High network traffic areas should use the Shorter Preamble type.

L. Power Mode: By default, Power Mode is set to Continuous Access Mode. **Continuous Access Mode** - this default setting consumes the most power. **Maximum Power Save** - this setting consumes the least power. **Power Save** - this setting consumes a moderate amount of power.

IP Address Configuration

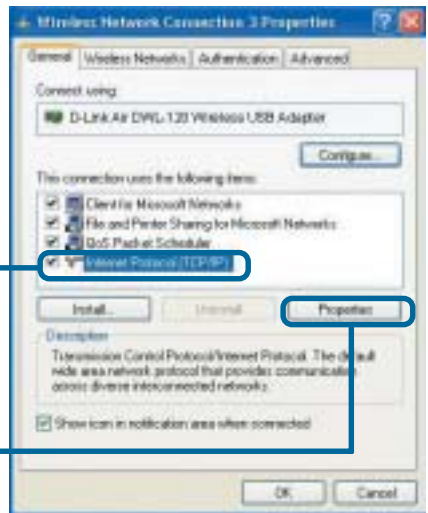
To connect to a network, **make sure the proper network settings are configured for DWL-120+.**

For Microsoft Windows XP:

Go to **Start > right click on My Network Places > select Properties > Double-click on the Network Connection associated with the DWL-120+.**

Click **Internet Protocol (TCP/IP)**

Click **Properties**



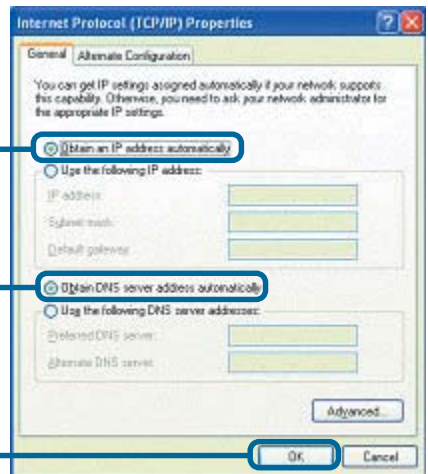
Dynamic IP address setup

Used when a **DHCP server** is available on the local network. (i.e. Router)

Select **Obtain an IP address automatically** (if the Wireless Router or Access Point has DHCP server enabled)

Select **Obtain DNS server address automatically**

Click **OK**



Static IP address setup

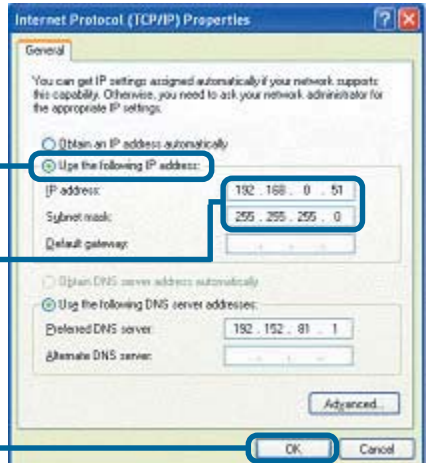
Used when a **DHCP server** is not available on the local network.

Select **Use the following IP address**

IP address: **192.168.0.51**
Subnet mask: **255.255.255.0**

Input a static IP address in the same range as the Wireless Router or Access Point.

Click **OK**

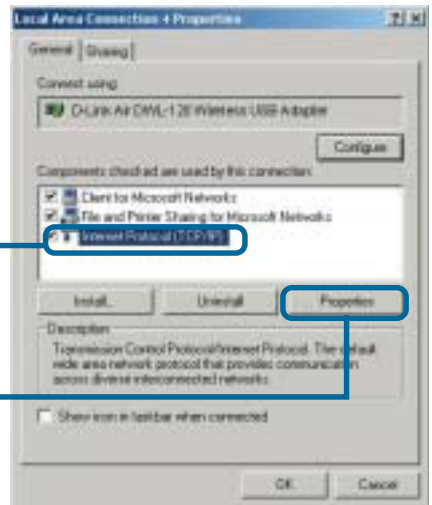


For Windows 2000 users:

Go to **Start > Settings > Network and Dial-up Connections** > Double-click on the **Local Area Connection** associated with the DWL-120+ > select **Properties**

Click **Internet Protocol (TCP/IP)**

Click **Properties**



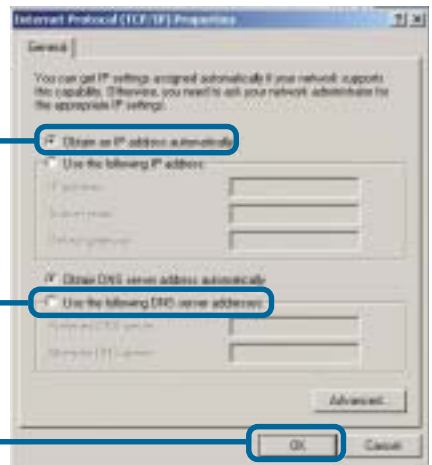
Dynamic IP address setup

Used when a **DHCP server** is available on the local network. (i.e. Router)

Select **Obtain an IP address automatically** (if the Wireless Router or Access Point has DHCP server enabled)

Select **Obtain DNS server address automatically**

Click **OK**



Static IP address setup

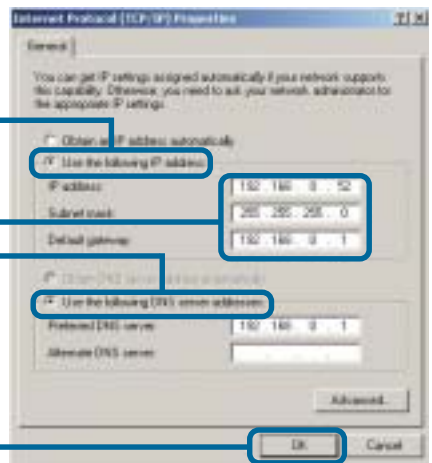
Used when a **DHCP server** is not available on the local network.

Select **Use the following IP address**

IP address: 192.168.0.52
Subnet mask: 255.255.255.0
Default Gateway: 192.168.0.1
DNS Address: 192.168.0.1

Input a static IP address in the same range as the Wireless Router or Access Point.

Click **OK**



Technical Support

You can find software updates and user documentation on the D-Link website.

D-Link provides free technical support for customers within the United States and within Canada for the duration of the warranty period on this product.

U.S. and Canadian customers can contact D-Link technical support through our website, or by phone.

Tech Support for customers within the United States:

D-Link Technical Support over the Telephone:

(877) 453-5465

24 hours a day, seven days a week.

D-Link Technical Support over the Internet:

<http://support.dlink.com>

[email:support@dlink.com](mailto:support@dlink.com)

Tech Support for customers within Canada:

D-Link Technical Support over the Telephone:

(800) 361-5265

Monday to Friday 8:30am to 9:00pm EST

D-Link Technical Support over the Internet:

<http://support.dlink.ca>

[email:support@dlink.ca](mailto:support@dlink.ca)

