



Install Guide

Version 1.1

DWL-2200AP
Wireless Access Point

System Requirements

- Internet Explorer 6.0 or Netscape Navigator™ 7.0 or above.

Package Contents



DWL-2200AP Access Point



Power Adapter*



CAT5 Ethernet Cable



PoE Base



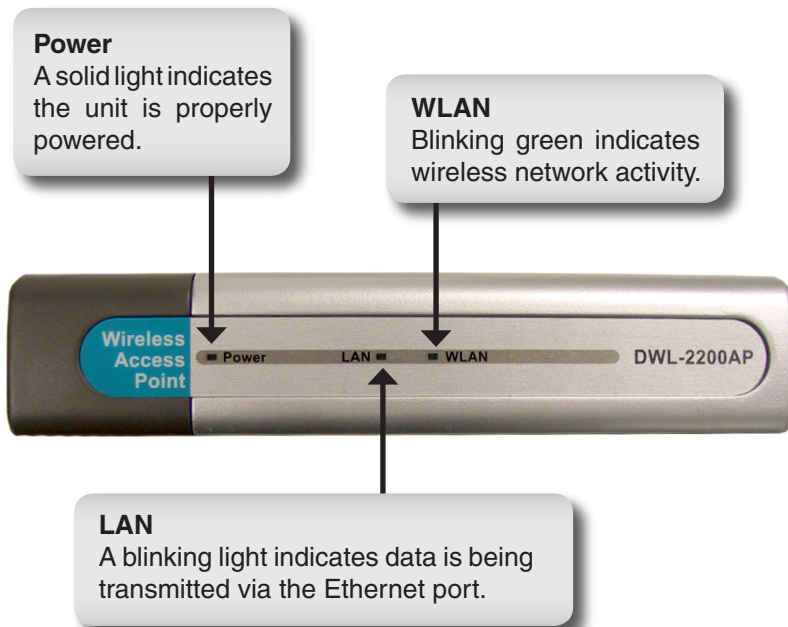
Manual and Software on CD

If any of the above items are missing, please contact your reseller.

** Using a power adapter with a different voltage rating will damage and void the warranty of this product.*

Hardware Overview

Front Panel LEDs



Hardware Overview

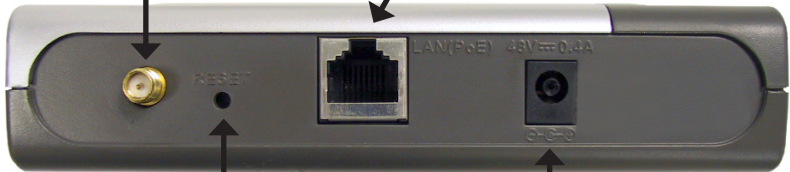
Back Panel Connections

Antenna Connector

Attach the wireless antenna to this connector.

Ethernet Port

Connects the DWL-2200AP to a computer, a switch, or router using an Ethernet cable.



Reset Button

Pressing this button restores the Access Point to its original factory default settings.

Power Receptor

Used to connect the supplied power adapter.

Installation Considerations

D-Link wireless devices allow you access your network using a wireless connection from virtually anywhere within the operating range of your wireless network. Keep in mind, however, that the number, thickness and location of walls, ceilings, or other objects that the wireless signals must pass through, may limit the range. Typical ranges vary depending on the types of materials and background RF (radio frequency) noise in your home or business. The key to maximizing wireless range is to follow these basic guidelines:

1. Keep the number of walls and ceilings between the D-Link access point and other network devices to a minimum - each wall or ceiling can reduce your adapter's range from 3-90 feet (1-30 meters.) Position your devices so that the number of walls or ceilings is minimized.
2. Be aware of the direct line between network devices. A wall that is 1.5 feet thick (.5 meters), at a 45-degree angle appears to be almost 3 feet (1 meter) thick. At a 2-degree angle it looks over 42 feet (14 meters) thick! Position devices so that the signal will travel straight through a wall or ceiling (instead of at an angle) for better reception.
3. Building Materials make a difference. A solid metal door or aluminum studs may have a negative effect on range. Try to position access points, wireless routers, and computers so that the signal passes through drywall or open doorways. Materials and objects such as glass, steel, metal, walls with insulation, water (fish tanks), mirrors, file cabinets, brick, and concrete will degrade your wireless signal.
4. Keep your product away (at least 3-6 feet or 1-2 meters) from electrical devices or appliances that generate RF noise.
5. If you are using 2.4GHz cordless phones or X-10 (wireless products such as ceiling fans, lights, and home security systems), your wireless connection may degrade dramatically or drop completely. Make sure your 2.4GHz phone base is as far away from your wireless devices as possible. The base transmits a signal even if the phone is not in use.

Installation

It's best to use a computer (with an Ethernet adapter) that is connected to a switch for configuring the DWL-2200AP. The default IP address for the DWL-2200AP is **192.168.0.50** with a Subnet Mask of **255.255.255.0**. You will need to assign your computer a Static IP address within the same range as the DWL-2200AP's IP address for the purpose of configuring the AP. **Please refer to page 13 to statically assign an IP address to your computer.**

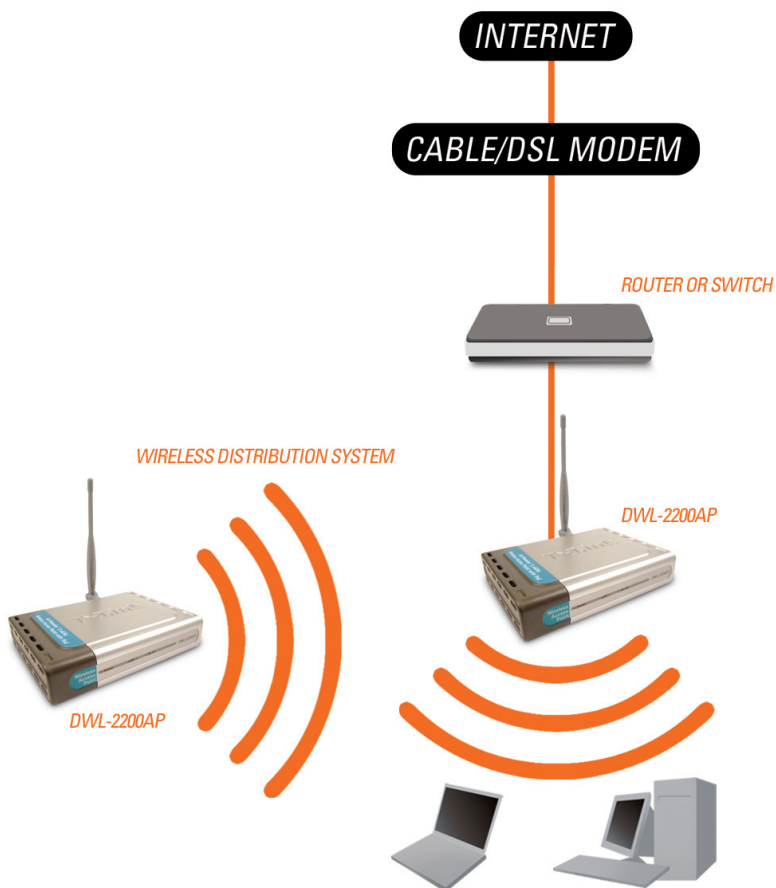
There are two methods of powering the DWL-2200AP. The power adapter can plug directly into the unit or plug into the PoE (Power over Ethernet) base unit. For directions on using PoE, please refer to page 15.

- A. Connect the power adapter to the receptor at the back panel of the DWL-2200AP. Plug the other end of the power adapter to a wall outlet or power strip. The Power LED will turn ON to indicate proper operation.
- B. Insert one end of the cable to the Ethernet port on the back panel of the DWL-2200AP and the other end of the cable to an Ethernet Broadband Router or Switch.

Note: You also have the option of connecting the DWL-2200AP directly to the computer that will be used for configuration. The LAN LED light should illuminate to indicate a proper Ethernet connection. (Note: The Ethernet Port on the DWL-2200AP is Auto-MDI/MDIX. This allows you to use a straight-through or crossover Ethernet cable to connect to the Ethernet port on the DWL-2200AP.)

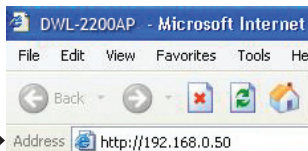
When you have completed the steps in this Quick Installation Guide, your connected network should look similar to this:

YOUR NETWORK SETUP



Configuration

Open your Web browser and enter **http://192.168.0.50**



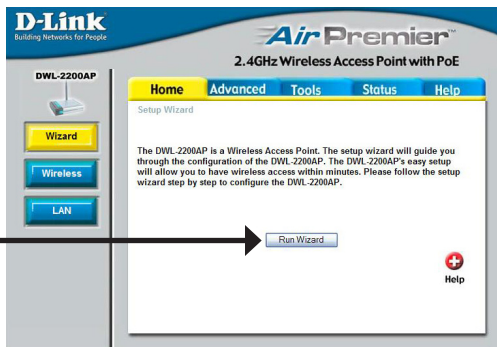
The log-in pop-up screen will appear.

Type **admin** for the username and leave the password field blank.



Click **OK**

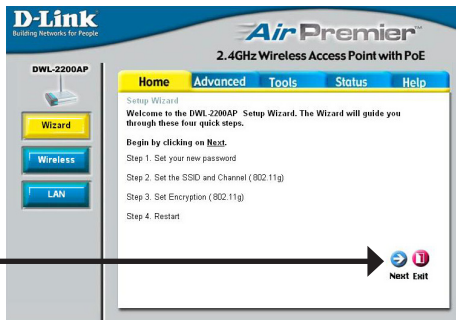
Once you have logged in, the Home screen will appear.



Click **Run Wizard**

You will see the following screen.

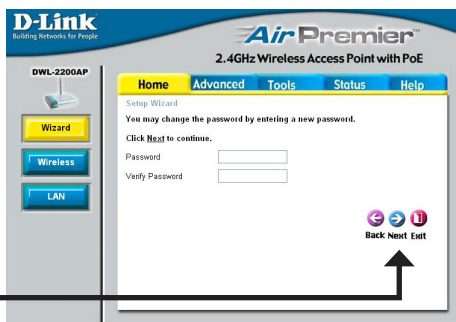
Click **Next**



Set up your new password

You have the option to establish a password.

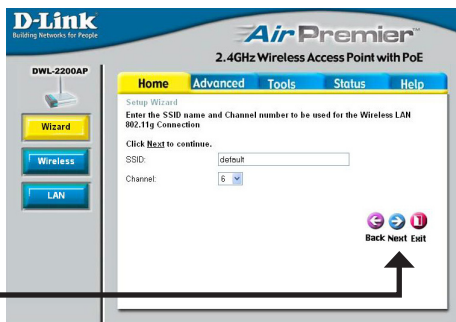
Click **Next**



Set your Wireless Connection

Enter your SSID and select the channel of your wireless network. The SSID is the name of your wireless network. It can be up to 32 characters.

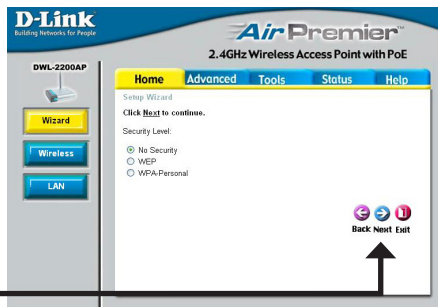
Click **Next**



Wireless Security

The DWL-2200AP offers WEP and WPA-Personal. By default encryption is disabled. You can enable encryption for secure wireless communication.

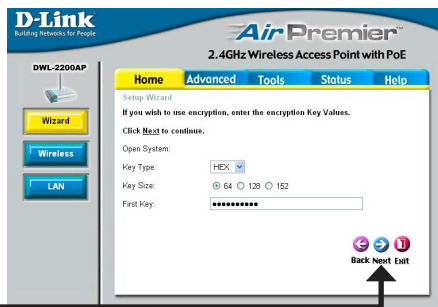
Click **Next**



WEP Encryption

If you selected WEP, select the security level and enter your WEP key. Refer to the **Wireless Security** section in the manual on the CD for more information.

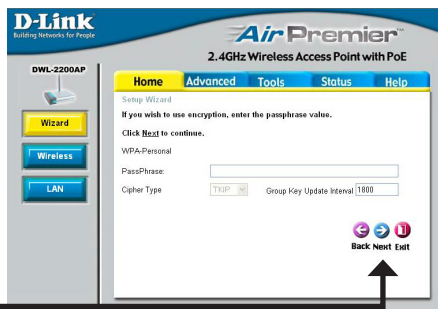
Click **Next**

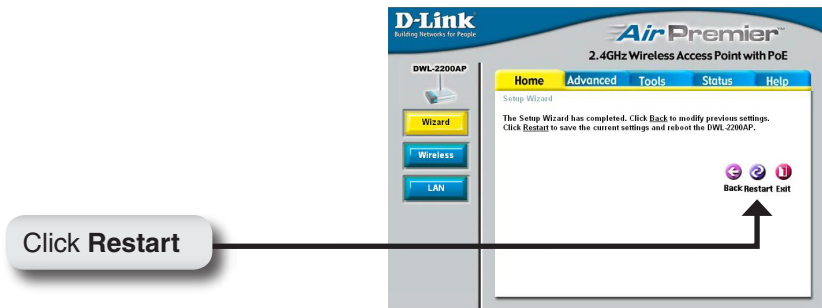


WPA-Personal Encryption

If you selected WPA-Personal, enter your WPA passphrase. Refer to the **Wireless Security** section in the manual on the CD for more information.

Click **Next**





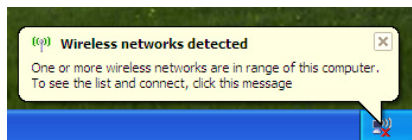
Your setup is complete.

You may now connect your wireless clients to the access point. If you have enabled either WEP or WPA-Personal security, you must enable it and enter the WEP key or WPA passphrase exactly the same on your wireless clients.

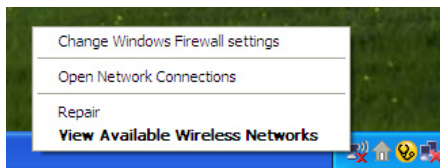
Connect to the Wireless Network

To connect to the access point using a Windows® XP computer, follow the steps below. Your wireless adapter may have a site survey feature which is similar to the Windows® XP utility as shown below.

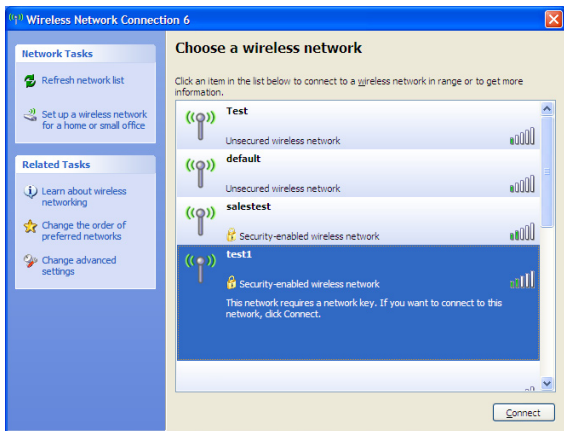
If you receive the **Wireless Networks Detected** bubble, click on the center



You may also right-click on the wireless computer icon in your system tray (lower-right corner next to the time). Select **View Available Wireless Networks**.



The utility will display any available wireless networks in your area. Click on a network (the SSID you entered when configuring your access point) and click the **Connect** button.



Assigning a Static IP Address

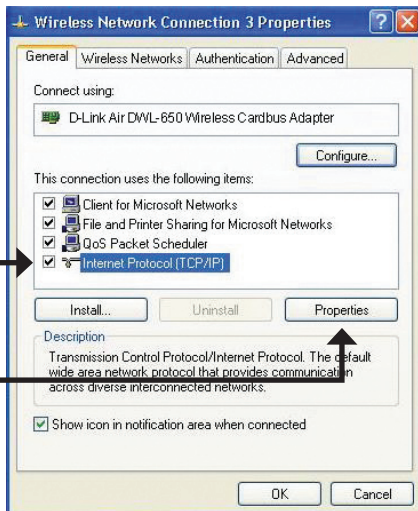
To assign a Static IP Address on the computer that you are using to configure the DWL-2200AP, follow the steps for the appropriate operating system:

Windows® XP:

Go to **Start**, click on **Control Panel**, double-click on **Network Connections**, right-click on **Local Area Connections** and select **Properties**.

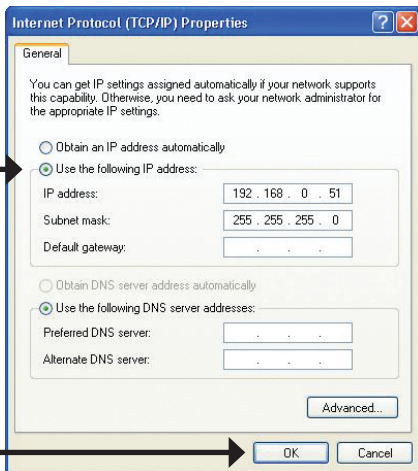
Highlight **Internet Protocol (TCP/IP)**

Click **Properties**



Input a static IP address in the same range as the DWL-2200AP's IP address of 192.168.0.50. Each computer/device must have a unique IP address.

Select **Use the following IP address**



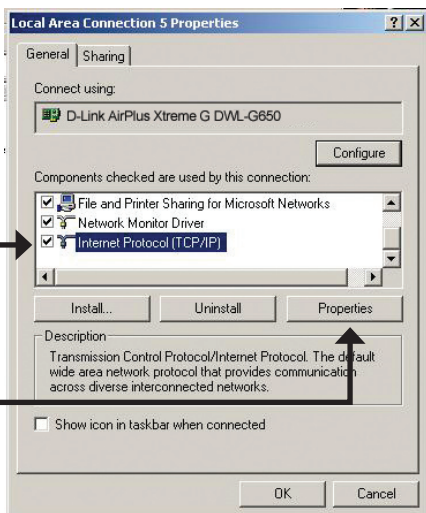
Click **OK**

Windows® 2000:

Go to **Start > Settings > Network and Dial-up Connections**. Double-click on the Local Area Connection associated with the Network Adapter installed on your system and select **Properties**.

Click **Internet Protocol (TCP/IP)**

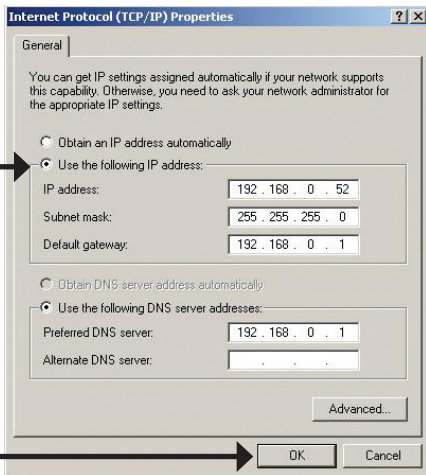
Click **Properties**



Input a static IP address in the same range as the DWL-2200AP's IP address of 192.168.0.50. Each computer/device must have a unique IP address.

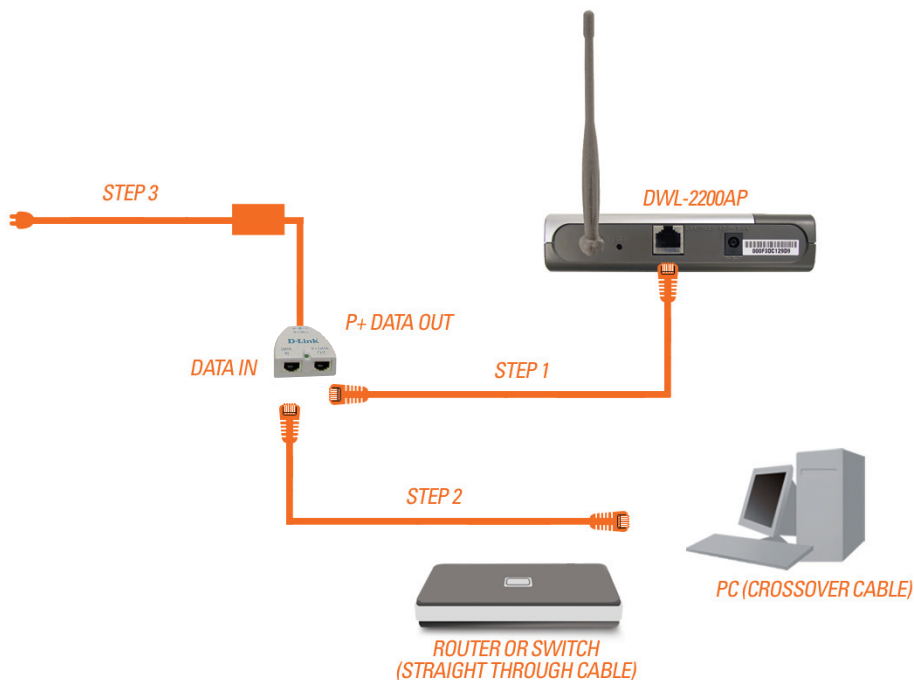
Select **Use the following IP address**

IP address: 192.168.0.52
Subnet mask: 255.255.255.0



Click **OK**

Using Power over Ethernet



Step 1: Connect one end of an Ethernet cable (included with your package) to the LAN port on the DWL-2200AP and the other end of the Ethernet cable to the port labeled P+DATA OUT on the PoE base unit.

Step 2: Connect another Ethernet cable from the DATA IN port on the PoE base unit to your router/switch or to a PC.

Step 3: Attach the power adapter to the connector labeled POWER IN on the PoE base unit. Attach the power cord to the power adapter and into an electrical outlet.

Technical Support

D-Link's website contains the latest user documentation and software updates for D-Link products.

U.S. and Canadian customers can contact D-Link Technical Support through our website or by phone.

United States

Telephone

(877) 45-D-Link (453-5465)

Monday through Friday 8:00am - 5:00pm PST.

World Wide Web

<http://support.dlink.com>

E-mail

support@dlink.com

Canada

Telephone

(800) 361-5265

Monday through Friday, 7:30am to 9:00pm EST.

World Wide Web

<http://support.dlink.ca>

E-mail

support@dlink.ca



Version 1.1
Revised 12/30/2005

Copyright ©2005-2006 D-Link Corporation/D-Link Systems, Inc. All rights reserved. D-Link, the D-Link logo are registered trademarks of D-Link Corporation or its subsidiaries in the United States and other countries. Other trademarks are the property of their respective owners. Maximum wireless signal rate derived from IEEE Standard 802.11g specifications. Actual data throughput will vary. Network conditions and environmental factors, including volume of network traffic, building materials and construction, and network overhead, lower actual data throughput rate. Environmental factors may adversely affect wireless signal range. Visit www.dlink.com for more details.