

D-Link[®]

Quick Installation Guide

This product can be set up using any current web browser, i.e. Internet Explorer or Netscape Navigator.



DWL-7700AP
D-Link AirPremier[®]
Wireless AG
Outdoor AP/Bridge

Before You Begin

It's best to use a computer (with an Ethernet adapter) connected to a switch to configure the DWL-7700AP. The default IP address for the DWL-7700AP is **192.168.0.50** with a subnet mask of **255.255.255.0** on the **wired Ethernet side**. You will need to assign your computer a static IP address within the same range as the DWL-7700AP's IP address for the purpose of configuring the DWL-7700AP. **If you need assistance assigning a static IP address to your network adapter, please refer to the manual on the CD-ROM.**

Check Your Package Contents



**DWL-7700AP Wireless AG Outdoor
Access Point/Bridge**



CD-ROM (Containing Manual and Warranty)



Two Dipole Antenna



Surge Arrestor

Check Your Package Contents (continued)



PoE base unit



RF jumper cable



30M Ethernet cable



Grounding wire



Power cord



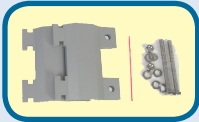
Power Adapter



8 Screws and rubber ring

Check Your Package Contents (continued)

Mounting Option A



Mounting Kit

Mounting Option B



Mounting Kit



Wall Mount Screws

If any of the above items are missing, please contact your reseller.

Important Information



This product should **ONLY** be installed by an experienced installer who is familiar with local building and safety codes and where ever applicable, is licensed by the appropriate authorities. Failure to do so may void the D-Link product warranty and may expose the end user or the service provider to legal and financial liabilities. D-Link and its resellers or distributors are not liable for injury, damage or violation of regulations associated with the installation of outdoor units or antennas.

A safety grounding system is necessary to protect your outdoor installation from lightning strikes and the build-up of static electricity. So direct grounding of the antenna mast, Outdoor AP, and Surge Arrester is very important. And so mounting the Outdoor AP on the antenna mast, you have to connect the Outdoor AP to the same grounding system with the AC wall outlet. The grounding system must comply with the National Electrical Code and safety standards that apply in your country. Always check with a qualified electrician if you are in doubt as to whether your outdoor installation is properly grounded.

1

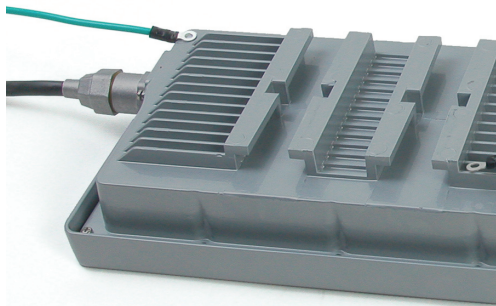
Physical Installation for your DWL-7700AP

Step 1: Connect the supplied Ethernet cable with the waterproof enclosure to the Ethernet port on the DWL-7700AP and attach the grounding wire.

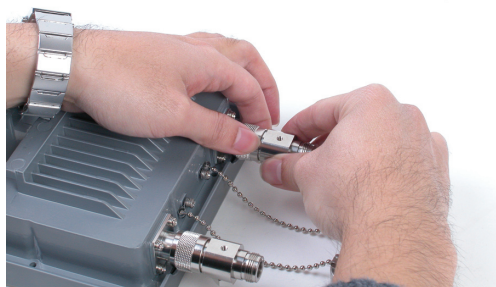


1

Physical Installation for your DWL-7700AP (continued)

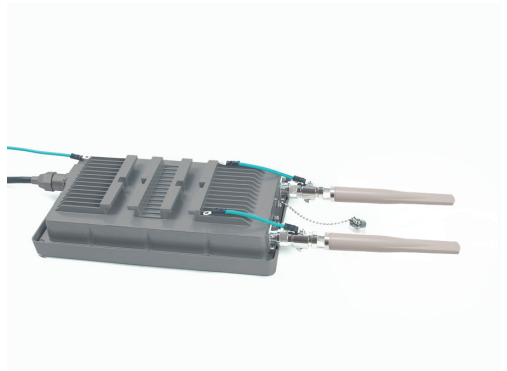
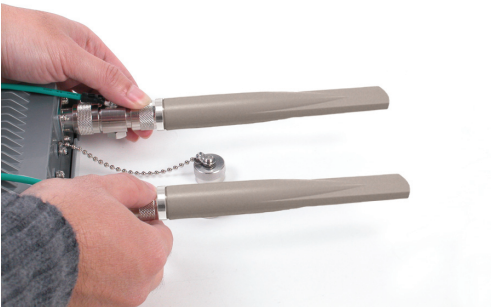
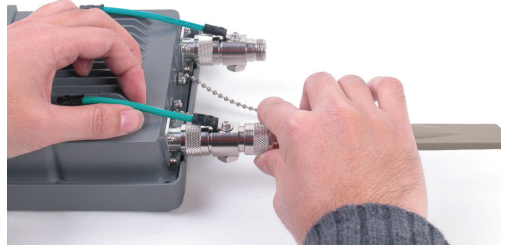
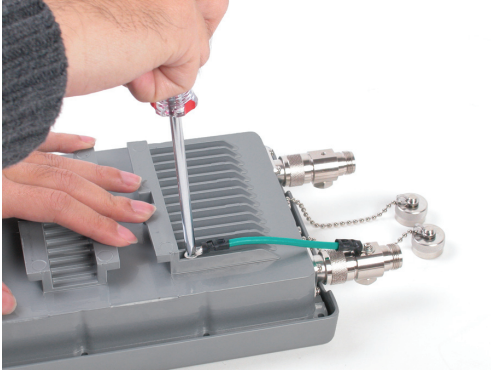


Step 2: Install the two dipole antennas to the antenna connector, and attach the grounding wires.



1

Physical Installation for your DWL-7700AP (continued)

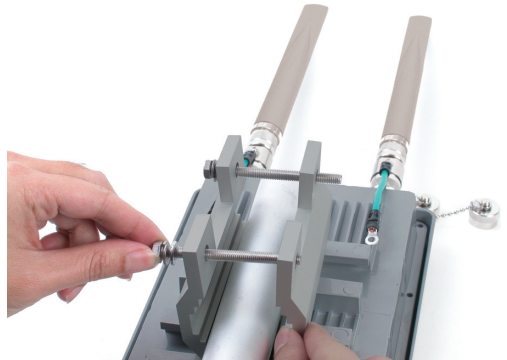
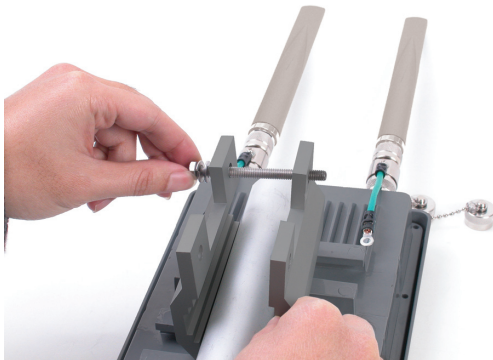
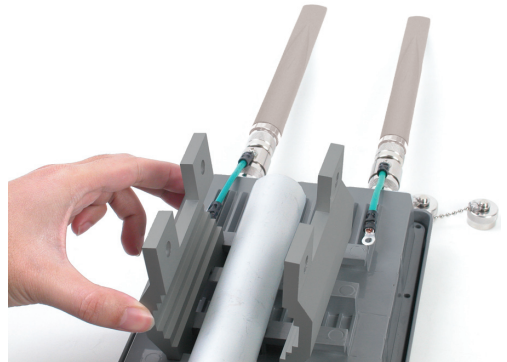
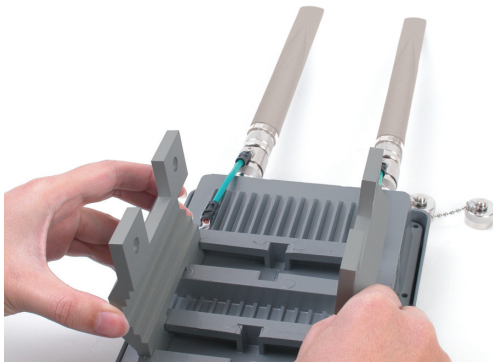
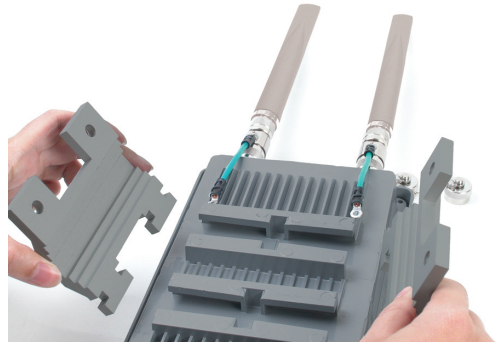


1

Physical Installation for your DWL-7700AP (continued)

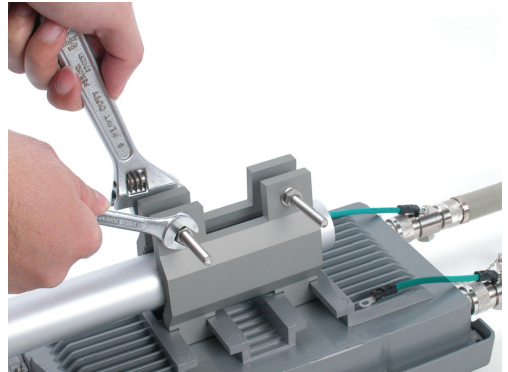
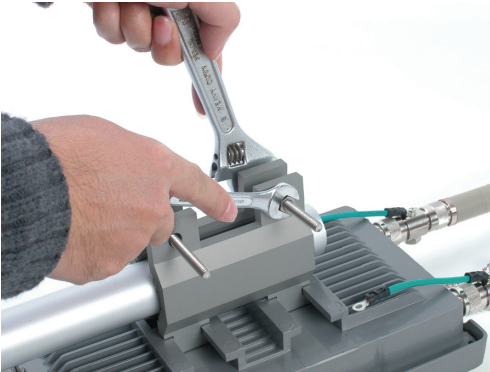
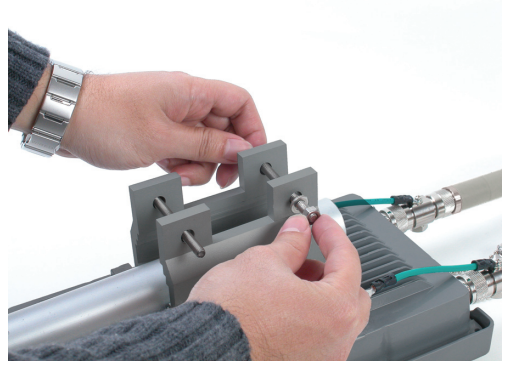
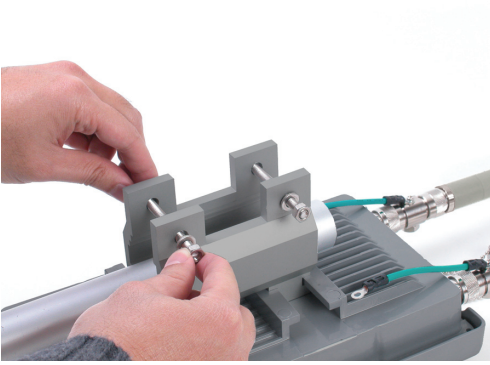
Step 3: Install the mounting kits. You can select between two mounting options.

Mounting Option A:

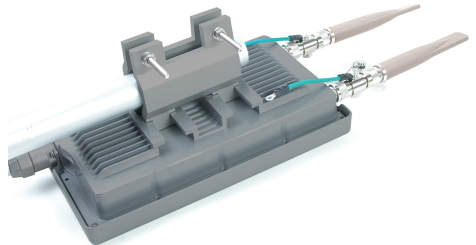


1

Physical Installation for your DWL-7700AP (continued)



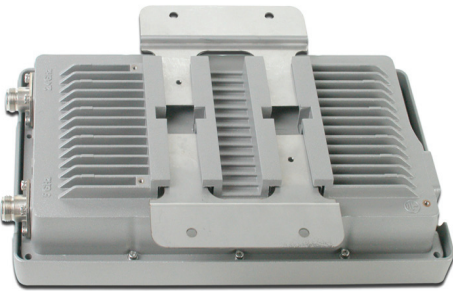
A complete DWL-7700AP with Mounting Option A should look like this.



1

Physical Installation for your DWL-7700AP (continued)

Mounting Option B:



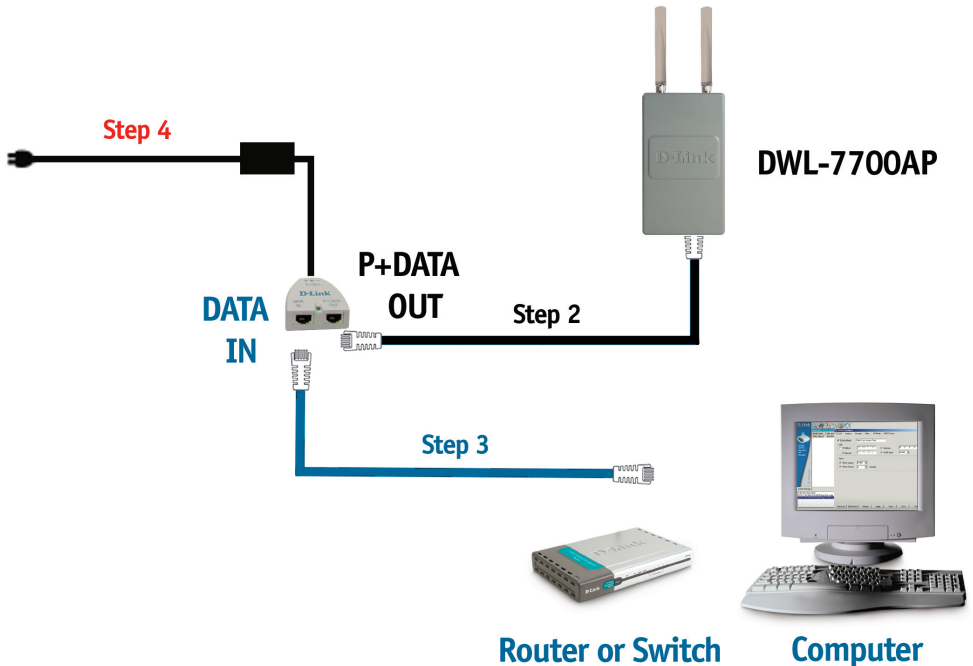
A complete DWL-7700AP with Mounting Option B should look like this.



2

Connecting The DWL-7700AP Wireless Access Point To Your Network

Hardware Installation Overview



Step 1: Do the **Physical Installation** first (Please refer to pages 5-10).

Step 2: Connect the remaining end of the supplied Ethernet cable (Connected to the DWL-7700AP in Step 1 on page 5) to the **P+ DATA OUT** port on the PoE base unit.

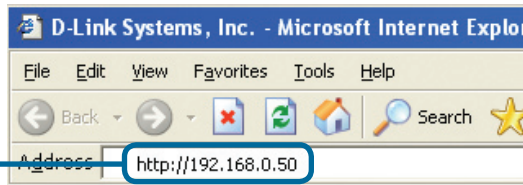
Step 3: Connect an Ethernet cable from a router/switch or PC to the **DATA IN** port on the PoE base unit.

Step 4: Attach the power adapter to the connector labeled **POWER IN** on the PoE base unit. Attach the power cord to the power adapter and into an electrical outlet.

3

Using The Setup Wizard

Open your Web browser and type **http://192.168.0.50** into the URL address box. Then press the **Enter** key.



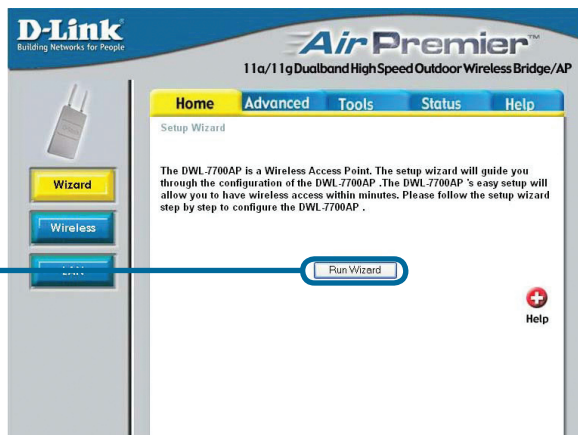
The logon pop-up screen will appear.

Type **admin** for the username and leave the password field blank.



Click **OK**

Once you have logged in, the **Home** screen will appear.



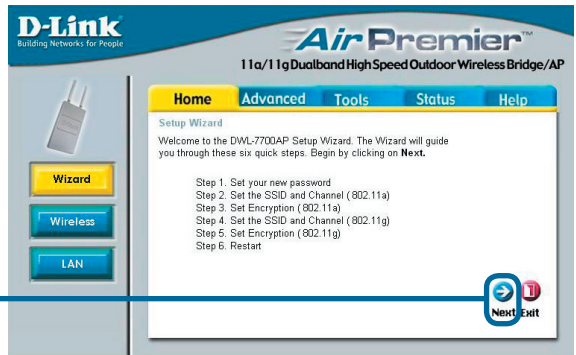
Click **Run Wizard**

3

Using The Setup Wizard (continued)

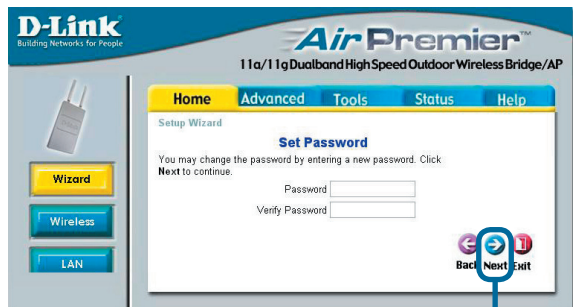
You will see the following screens.

Click **Next**



Step 1 - Set up your new password. You have the option to establish a password.

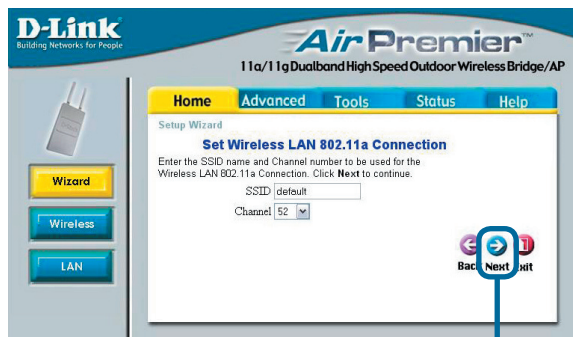
Click **Next**



Step 2 - Set Wireless LAN 802.11a Connection

Enter the desired SSID and the channel that you wish to use here. This is the SSID that will be broadcast to wireless users.

Click **Next**

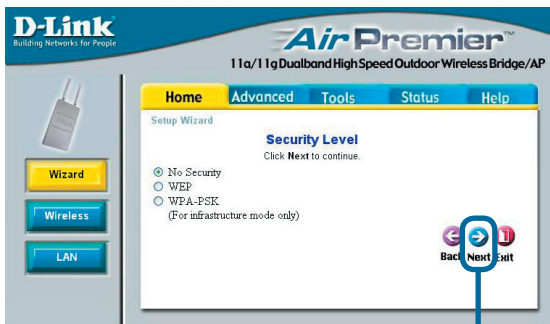


3

Using The Setup Wizard (continued)

Step 3 - Encryption for 802.11a

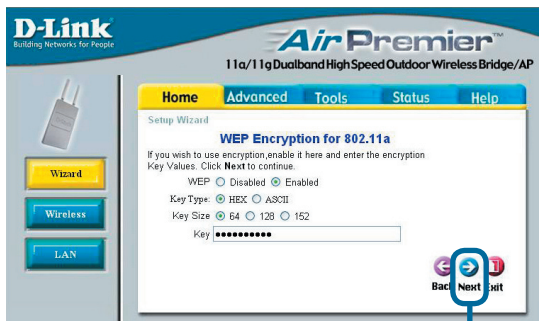
The DWL-7700AP is capable of three levels of wireless encryption 64-bit, 128-bit and 152-bit as well as WPA-PSK. **By default encryption is disabled.** You can change the encryption settings for a more secure wireless network.



Click **Next**

WEP Encryption for 802.11a

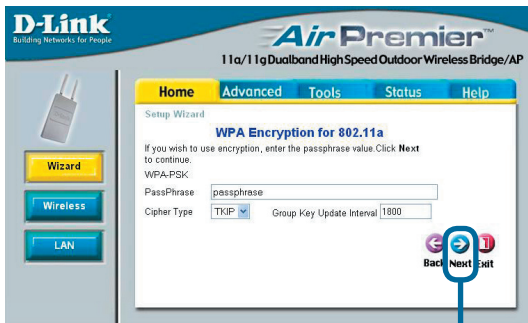
Select Enabled, the key type (Hex or ASCII), the key size (64, 128, or 152-bit), and the WEP key. The key must be exactly the same on your wireless clients.



Click **Next**

WPA-PSK Encryption for 802.11a

Enter your WPA passphrase and select the cypher type (TKIP). The passphrase and cypher type must be exactly the same on your wireless clients.



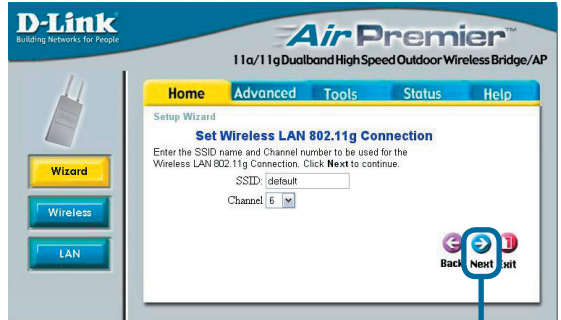
Click **Next**

3

Using The Setup Wizard (continued)

Step 4 - Set Wireless LAN 802.11g Connection

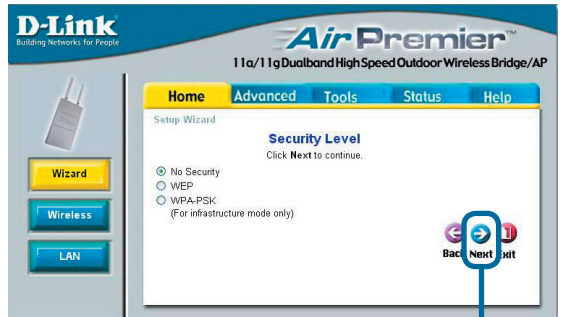
Enter the desired SSID and the channel that you wish to use here. This is the SSID that will be broadcast to wireless users.



Click **Next**

Step 5 - Encryption for 802.11g

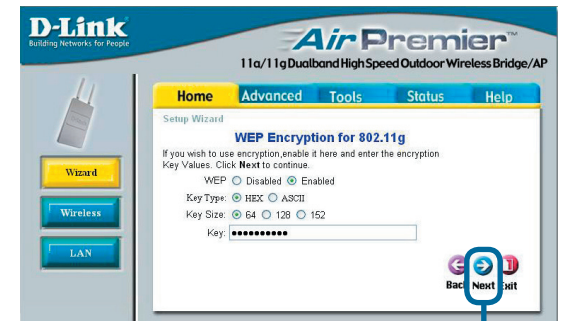
The DWL-7700AP is capable of three levels of wireless encryption 64-bit, 128-bit and 152-bit as well as WPA-PSK. **By default encryption is disabled.** You can change the encryption settings for a more secure wireless network.



Click **Next**

WEP Encryption for 802.11g

Select Enabled, the key type (Hex or ASCII), the key size (64, 128, or 152-bit), and the WEP key. The key must be exactly the same on your wireless clients.



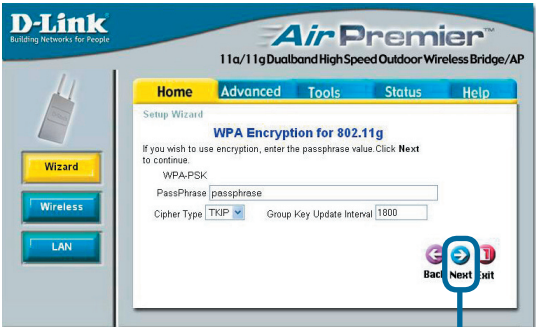
Click **Next**

3

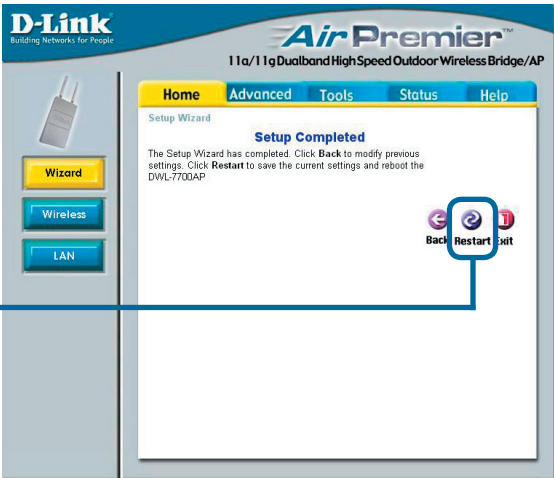
Using The Setup Wizard (continued)

WPA-PSK Encryption for 802.11g

Enter your WPA passphrase and select the cypher type (TKIP). The passphrase and cypher type must be exactly the same on your wireless clients.



Click **Next**



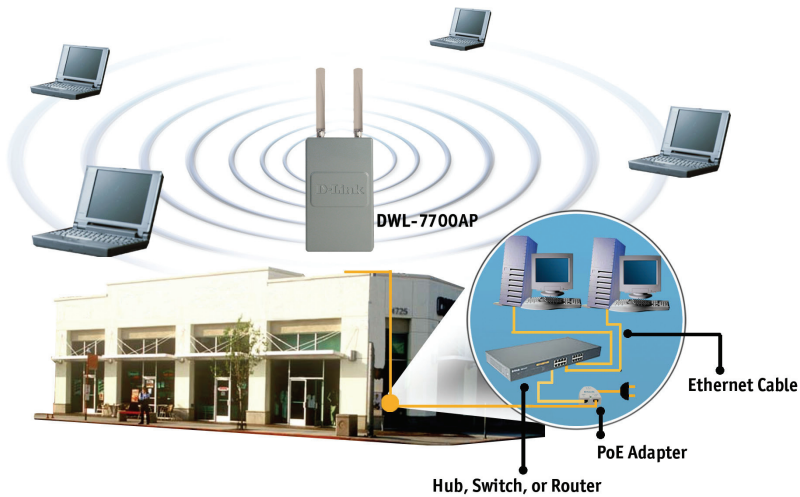
Click **Restart**

4

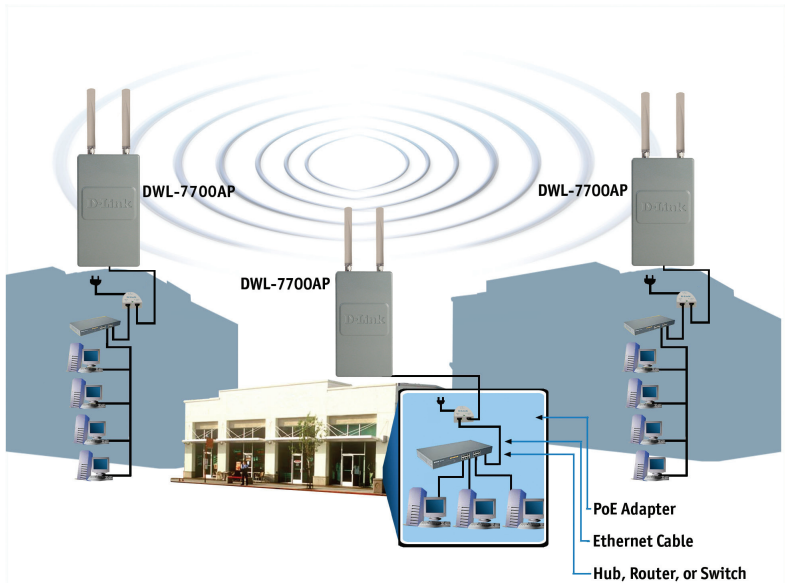
Your Setup is Complete!

When you have completed the steps in this *Quick Installation Guide*, your connected network should look similar to this.

AP Mode:



Bridging Mode:

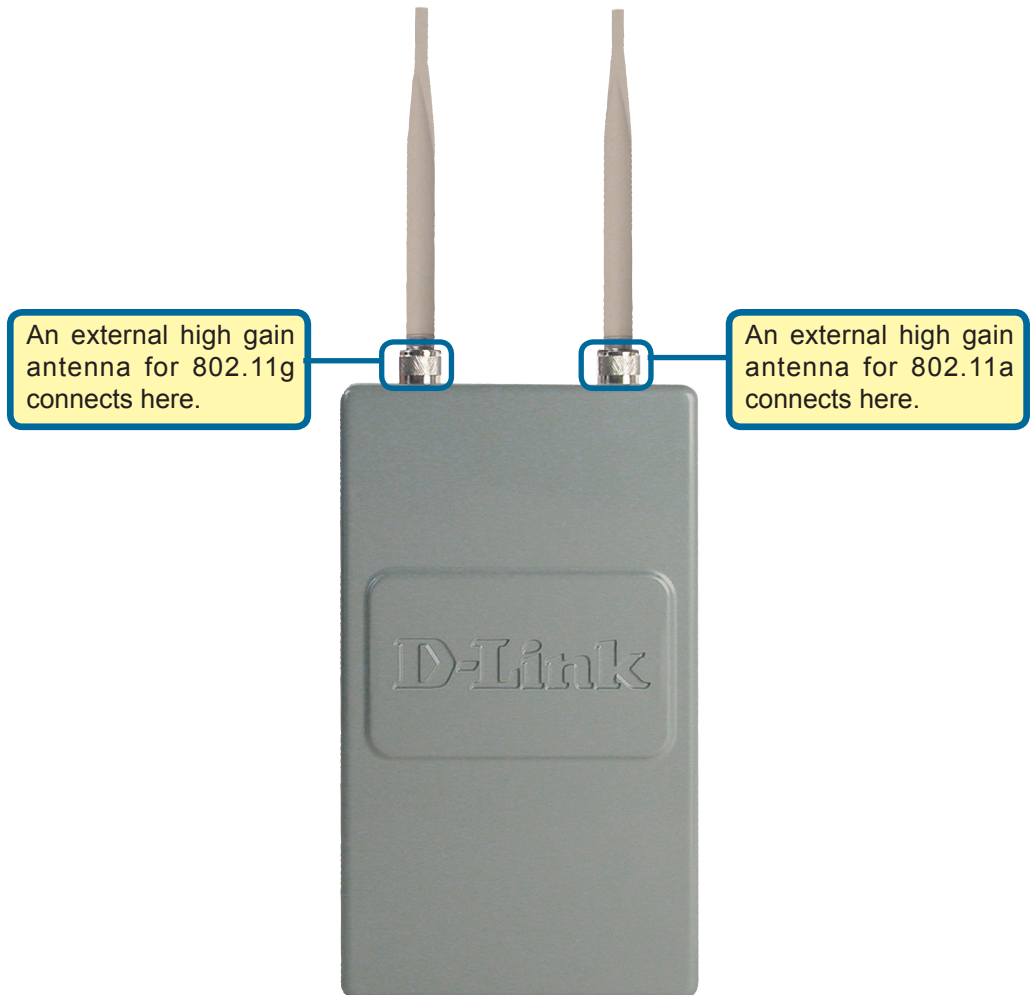


Appendix - High Gain External Antenna (Optional)

An external high gain antenna (not included) can be connected to the DWL-7700AP to extend the range of the network.

For high gain antenna information, please contact D-Link sales at 800-326-1688.

If you are using an 802.11a connection, the external gain antenna attaches to the right side of the DWL-7700AP when the front panel (D-Link) is facing towards you. If you are using an 802.11g connection, the external gain antenna attaches to the left side of the DWL-7700AP when the front panel (D-Link) is facing towards you.



Notes

Technical Support

You can find software updates and user documentation on the D-Link website.

D-Link provides free technical support for customers within the United States and within Canada for the duration of the warranty period on this product.

U.S. and Canadian customers can contact D-Link Technical Support through our website, or by phone.

Tech Support for customers within the United States:

D-Link Technical Support over the Telephone:

(877) 453-5465

Monday to Friday 8:00am to 5:00pm PST

D-Link Technical Support over the Internet:

<http://support.dlink.com>

[email:support@dlink.com](mailto:support@dlink.com)

Tech Support for customers within Canada:

D-Link Technical Support over the Telephone:

(800) 361-5265

Monday to Friday 7:30am to 12:00am EST

D-Link Technical Support over the Internet:

<http://support.dlink.ca>

[email:support@dlink.ca](mailto:support@dlink.ca)

