

DWL-7700AP

Release 2.00

# Outdoor AP/Bridge

Wireless A/G Outdoor AP/Bridge

## Install Guide

Business Class Networking

## Package Contents

- DWL-7700AP 802.11A/G Outdoor Wireless AP/ Bridge
- CD-ROM (with Product Documentation)
- PoE Base Unit
- Two Dipole Antennas
- RF Jumper Cable
- Surge Arrestor
- 30m Ethernet cable
- Grounding Wire
- Power Cord
- Power Adapter
- 8 Screws and Rubber Ring
- 2 Mounting Kits
- Console Cable



## System Requirements

- Computer with Windows, Macintosh, or Linux-based operating system with an Ethernet adapter installed
- Internet Explorer version 6.0 or Netscape version 7.0 and above

# Before You Begin

It's best to use a computer (with an Ethernet adapter) connected to a switch to configure the DWL-7700AP. The default IP address for the DWL-7700AP is 192.168.0.50 with a subnet mask of 255.255.255.0 on the wired Ethernet side. You will need to assign your computer a static IP address within the same range as the DWL-7700AP's IP address for the purpose of configuring the DWL-7700AP. If you need assistance assigning a static IP address to your network adapter, please refer to the manual on the CD-ROM.

## Important Information

This product should **ONLY** be installed by an experienced installer who is familiar with local building and safety codes and where ever applicable, is licensed by the appropriate authorities. Failure to do so may void the D-Link product warranty and may expose the end user or the service provider to legal and financial liabilities. D-Link and its resellers or distributors are not liable for injury, damage, or violation of regulations associated with the installation of outdoor units or antennas.

A safety grounding system is necessary to protect your outdoor installation from lightning strikes and the build-up of static electricity. Direct grounding of the antenna mast, Outdoor AP, and Surge Arrester is very important. When mounting the Outdoor AP on the antenna mast, you have to connect the Outdoor AP to the same grounding system with the AC wall outlet. The grounding system must comply with the National Electrical Code and safety standards that apply in your country. Always check with a qualified electrician if you are in doubt as to whether your outdoor installation is properly grounded.

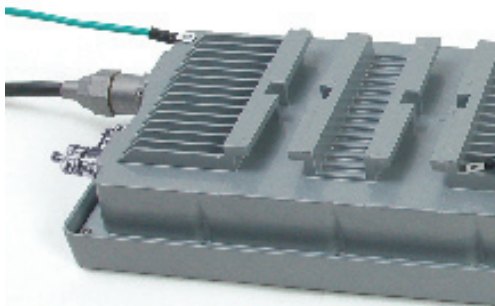
# Physical Installation

**Step 1:** Connect the supplied Ethernet cable with the waterproof enclosure to the Ethernet port on the DWL-7700AP and attach the grounding wire.

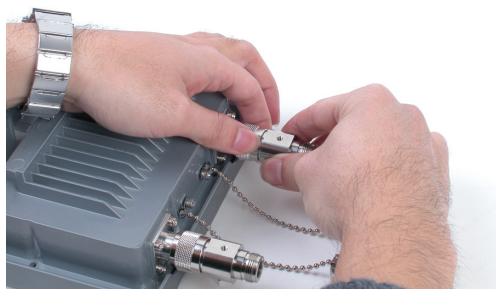




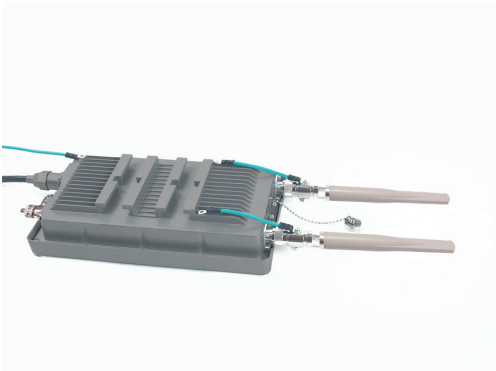
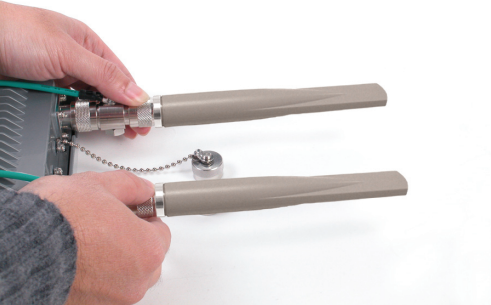
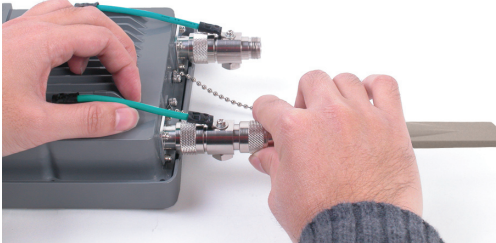
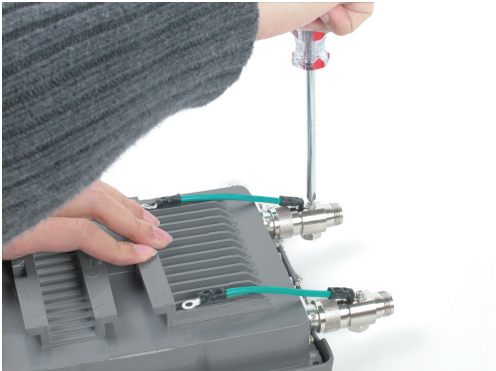
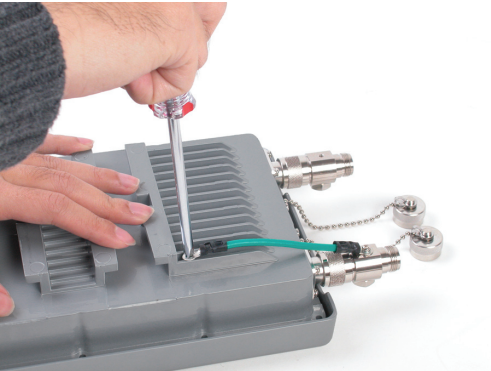
# Physical Installation (continued)



**Step 2:** Install the two dipole antennas to the antenna connector and attach the grounding wires.



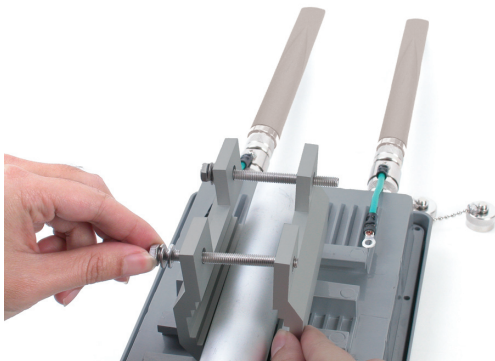
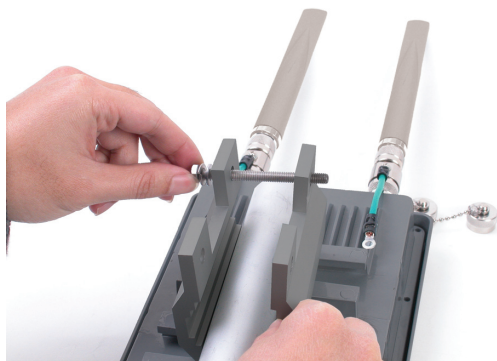
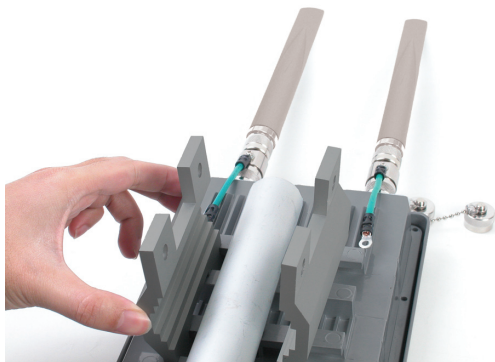
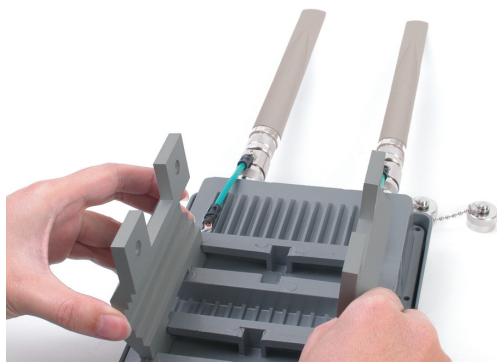
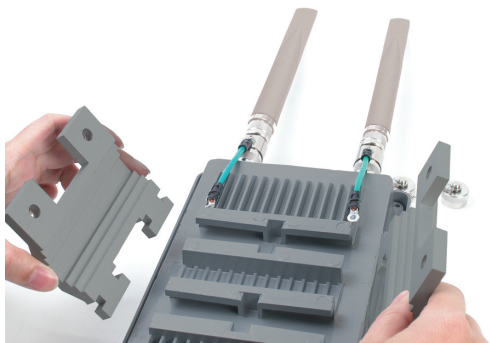
# Physical Installation (continued)



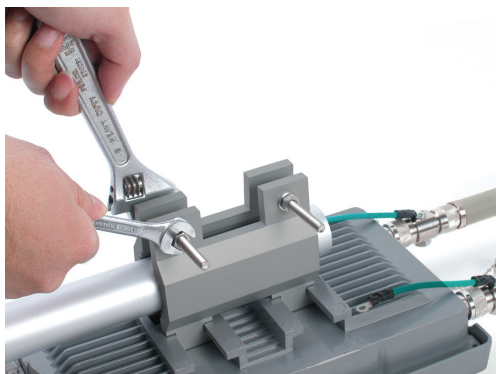
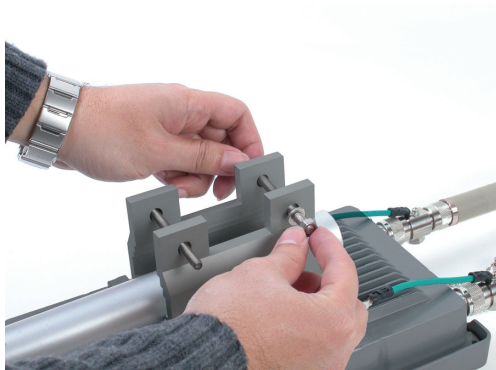
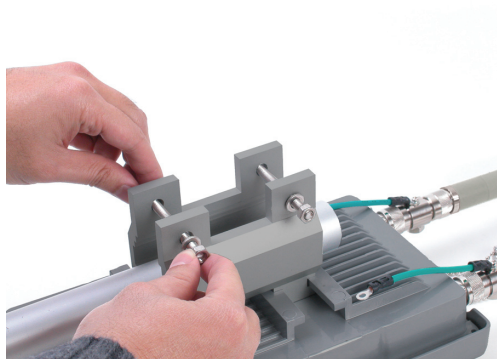
# Physical Installation (continued)

**Step 3:** Install the mounting kits. You can select between two mounting options.

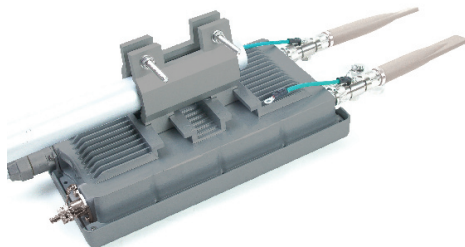
## Mounting Option A:



# Physical Installation (continued)



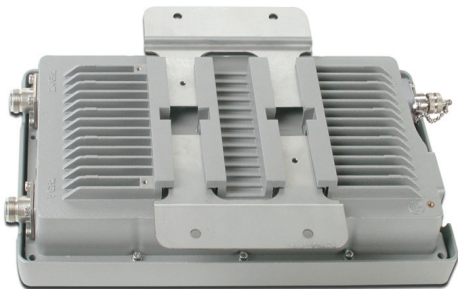
A complete DWL-7700AP with Mounting Option A should look like this.





# Physical Installation (continued)

## Mounting Option B:

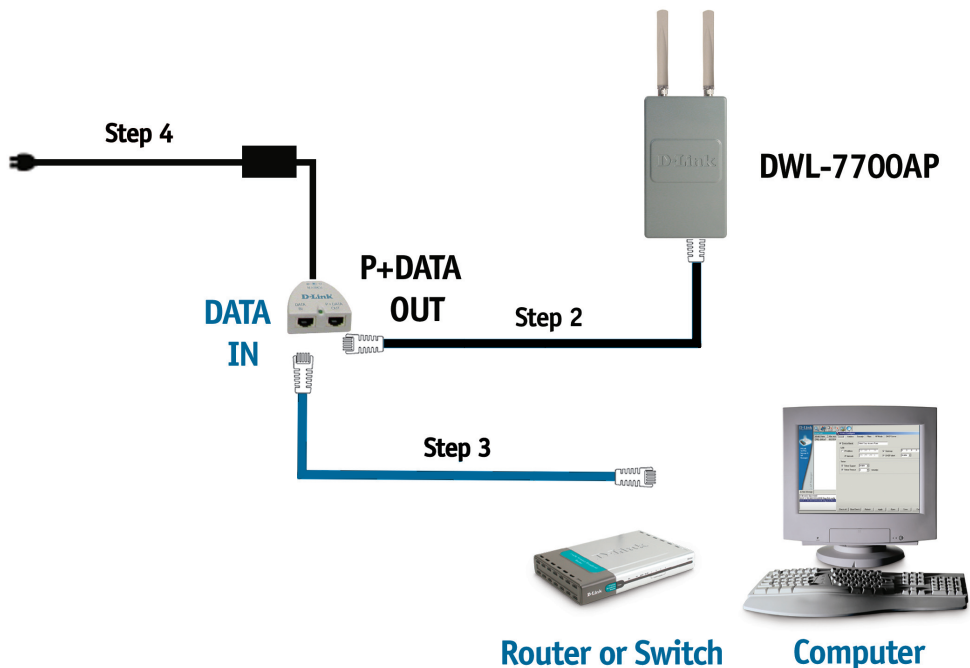


A complete DWL-7700AP with Mounting Option B should look like this.



# Connecting the DWL-7700AP Wireless Access Point to Your Network

## Hardware Installation Overview



**Step 1:** Complete the Physical Installation first.

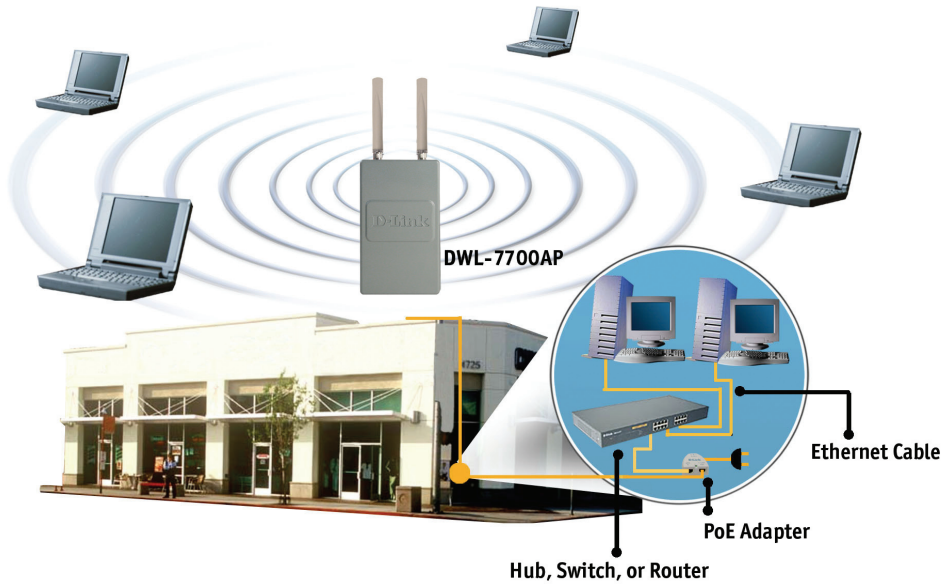
**Step 2:** Connect the remaining end of the supplied Ethernet cable (connected to the DWL-7700AP in Step 1 on page 4) to the P+ DATA OUT port on the PoE base unit.

**Step 3:** Connect an Ethernet cable from a router/switch or PC to the DATA IN port on the PoE base unit.

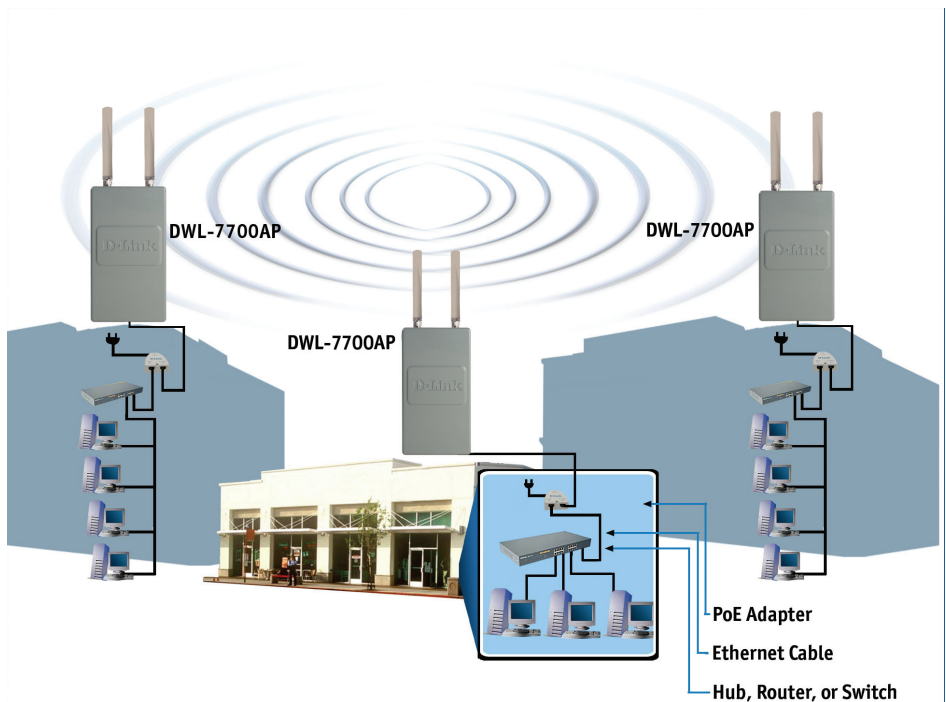
**Step 4:** Attach the power adapter to the connector labeled POWER IN on the PoE base unit. Attach the power cord to the power adapter and into an electrical outlet.

# Your Setup is Complete!

## AP Mode:



## Bridging Mode:



# Technical Support

You can find software updates and user documentation on the D-Link website.

D-Link provides free technical support for customers within the United States and within Canada for the duration of the warranty period on this product.

U.S. and Canadian customers can contact D-Link Technical Support through our website or by phone.

## Tech Support for customers within the United States:

***D-Link Technical Support over the Telephone:***

(877) 354-6555

***D-Link Technical Support over the Internet:***

<http://support.dlink.com>

## Tech Support for customers within Canada:

***D-Link Technical Support over the Telephone:***

(877) 354-6560

***D-Link Technical Support over the Internet:***

<http://support.dlink.com>

