

For use with Handheld or Pocket PCs with Windows CE 3.0 / Pocket PC 2002 in an “Ad Hoc” or “Infrastructure” network. *This guide is for installation purposes only. Please see your Manual for more detailed information.*

Contents of Package:

- D-Link Air DCF-660W 2.4 GHz Wireless Compact Flash Adapter
- Manual, Drivers, and Utility on CD
- Printed Quick Installation Guide



If any of the above items are missing, please contact your reseller.

System Requirement:

- PDA with Windows CE 3.0 / Pocket PC 2002 operating system with at least 32 MB of memory
- Compact Flash Type I or Type II slot
- Computer with “Microsoft Active Sync” installed
- An 802.11b Access Point (e.g., DWL-1000AP for **Infrastructure mode**) or another 802.11b wireless adapter (e.g., DWL-650 for **Ad-Hoc mode**.)

The default settings for the DCF-660W will work out of the box when used with D-Link Air and D-Link Air Plus Wireless Routers and Access Points.



Installing the DCF-660W Drivers using Windows XP, 2000, Me, 98

- Place the PDA in its cradle with the DCF-660W in the Type I or II slot. Keep the PDA turned on.

- **Insert** the driver CD that came with your DCF-660W into the CD-ROM drive on your computer.
- Click on **Install Drivers** as shown on the right. (Insert Autorun SS)



Fig. 1.1

If the Autorun function on your laptop computer does not automatically start, proceed to the steps below. If it does, proceed to Fig. 1.3.

Go to **Start > Run > type D:\Setup.exe** then **click OK**

NOTE: The letter “D” represents the letter of the CD-ROM drive. Your CD-ROM drive may be a different drive letter.

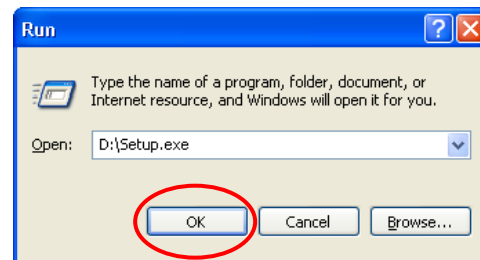


Fig 1.2. XP setup screen.

The Windows 2000, Me, 98 screen will look similar to Fig 1.2.

The InstallShield Wizard screen will appear.

Click **Next** to continue

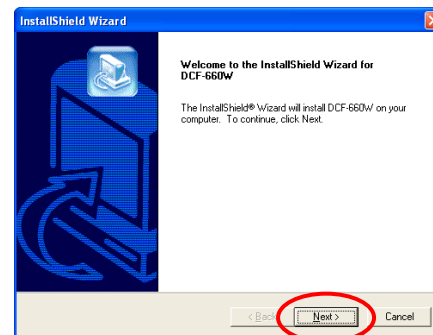


Fig. 1.3

Click **Yes**

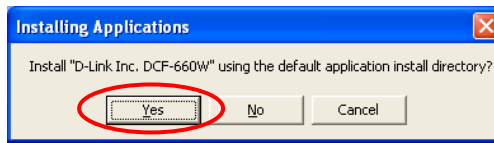


Fig. 1.4

Click **OK**

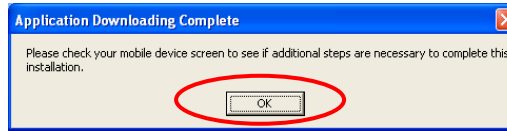


Fig. 1.5

Click **Finish**

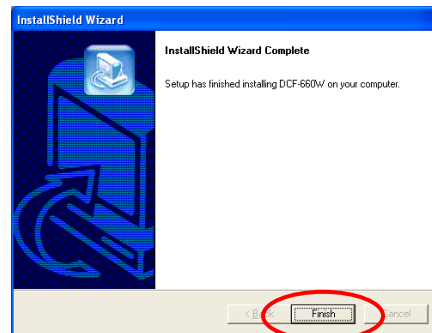


Fig. 1.6

2

Driver installation is now complete

Now, proceed to Section 3 to properly configure the wireless settings for the DCF-660W. Reset the PDA to finalize the DCF-660W driver installation.

3

Configuring the DCF-660W Wireless Settings

- After resetting the PDA, the *DCF-660W Compact Flash Adapter* will finalize its driver installation and the **Settings** screen (Fig. 2.1) will appear. This section allows users to set the IP address released from the Wireless Router or Access Point.
- If the **Settings** screen does not appear, go to **Start > Settings > Connections** and select on **IP Address** icon tab. Select **Use server-assigned IP (dynamic IP) address** via DHCP or assign a **specific IP address (static IP)** and click **ok**.

Check to see if the Wireless Router or Access Point has a DHCP server built in. If DHCP server is not available, select **“Use specific IP address”** and enter in the proper Static IP address, Subnet mask and Default gateway information to access the Wireless router or Access Point.

- By default the DCF-660W is set to **“Use server-assigned IP address.”**
- To configure the SSID (Service Set Identifier) and Network Type, go to **Start > Settings > select System tab > click on DCF-660W CF Card icon**.



Fig. 3.1



Fig. 3.2

Select the “**Configuration**” tab (Fig. 3.3). By default, it will display current wireless settings:

SSID - (Service Set Identifier) is a name that identifies a wireless network. Access Points and wireless clients attempting to connect to a specific WLAN (Wireless Local Area Network) must use the same SSID. The default setting is **default**. *Note: Specifying an SSID will prevent you from inadvertently connecting to a different wireless network.*

Network Type – Use “Infrastructure” mode if you will be using a Wireless Router or Access Point in your network. Use “Ad-hoc”, if you will not be using an Access Point. Ad-hoc requires the same channel and the same SSID for wireless devices on the wireless network.

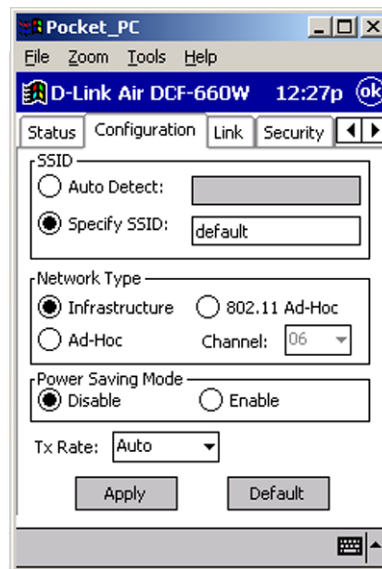


Fig. 3.3

Power Saving Mode – The “Power Save” mode is used to extend battery life.

Note: In “Power Save” mode, the associated Wireless Router or the Access Point must support “Power Saving” for communication to be established.

Tx Rate – The default transfer rate of “**Auto**” which allows the **DCF-660W** to adjust to the most optimal transfer rate available. However, the settings can be set at a fixed transfer rate.

If any changes are made in this section, select **Apply** to save changes.

For detailed explanation on the Ad-Hoc, Infrastructure mode, wireless basics, and troubleshooting, please refer to the DWL-660W Manual.

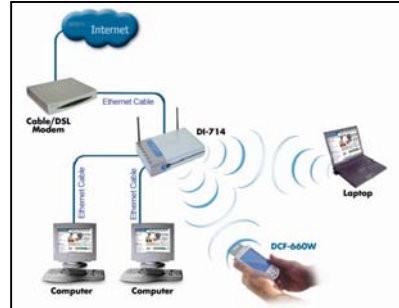


The Wireless configuration of the DCF-660W is now complete

5 Troubleshooting

The illustration shows a typical wireless setup for accessing the Internet connection using the D-Link Air DCF-660W in a PDA.

In most scenarios, a wireless Access Point or Access Point is used to connect to the wireless local area network (WLAN) at home, office, or public areas.



- **Q: I cannot connect to the access point or wireless router.**
A1: Make sure that the SSID on the DCF-660W CF adapter matches the SSID on the Wireless Router or Access Point.
A2: Make sure the WEP encryption settings for the DWL-660W CF adapter matches the Wireless Router or Access Point WEP encryption.
- **Q: The DCF-660W link light is not on.**
A: Check to see if the DCF-660W CF adapter is firmly inserted into a type I or II slot in the PDA.
- **Q: I am unable to access the Internet using the DWL-650.**
A1: Check that the IP address, subnet mask, gateway, and DNS settings are correctly entered for the network.
A2: Check the connection to the gateway by using the CF utility software found in the Link section.

For detailed explanation on Ad-Hoc, Infrastructure mode, Basics of networking, and troubleshooting, please refer to the DCF-660W Manual.



6 Contacting Technical Support

Thank you for purchasing D-Link *Air* DCF-660W. For any questions or assistance using the DCF-660W, please feel free to contact technical support.

The most recent software and documentation are available on the **D-Link** website. D-Link provides free technical support for customers within the United States during the warranty period on this product. U.S. customers can contact D-Link Technical Support through our web site, or by phone.

D-Link Technical Support over Telephone:

(800) 758-5489

24 hours a day, seven days a week.

D-Link Technical Support over the Internet:

<http://support.dlink.com>

D-Link[®]
Building Networks For People