

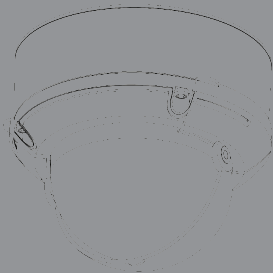


Quick Installation Guide

5 Megapixel H.265 Outdoor Dome Network Camera

This document will guide you through the basic installation process for your new D-Link Network Camera.

DCS-6517



Quick Installation Guide
Installationsanleitung
Guide d'installation
Guía de instalación
Guida di Installazione
Краткое руководство по установке
Guia de Instalação Rápida
快速安裝指南
Petunjuk Pemasangan Cepat

Documentation also available on
CD and via the D-Link Website

Quick Installation Guide

This installation guide provides basic instructions for installing the DCS-6517. For additional information about how to use the camera, please see the User Manual which is available on the CD included in this package or from the D-Link support website.

Package Contents

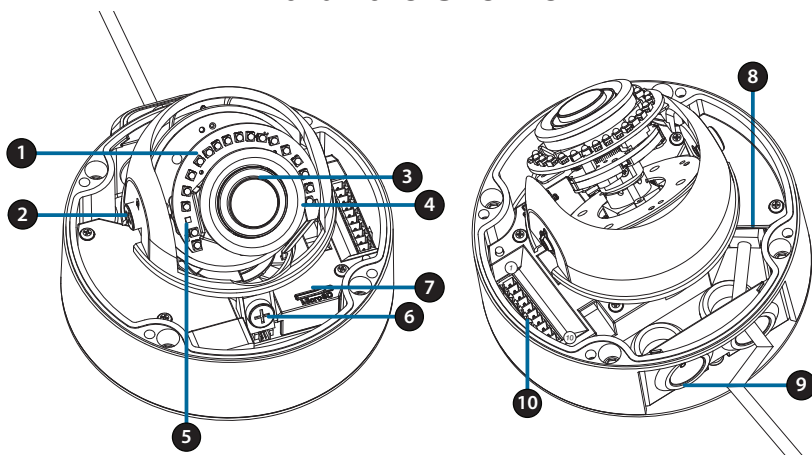
- DCS-6517 5 Megapixel H.265 Outdoor Dome Network Camera
- Ethernet Cable
- Extension Adapter
- Mounting Plate and Screws
- Sun Shield
- Side Cover
- Alignment Sticker
- Manual and Software on CD-ROM
- Quick Installation Guide

If any of the above items are missing, please contact your reseller.

Safety Notice:

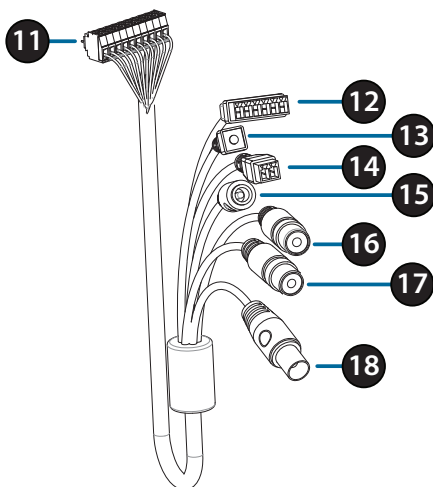
Installation and servicing should be done by certified technicians so as to conform to all local codes and prevent voiding your warranty.

Hardware Overview



1	IR LEDs	Provide illumination for low-light environments.								
2	Tilt Lock Screw	Can be loosened to adjust the camera's tilt angle.								
3	Camera Lens	Camera lens to record video of the surrounding area.								
4	Power/Status LED	Indicates the camera's current status.								
5	Light Sensor	Measures lighting conditions and switches between day and night mode accordingly.								
6	Horizontal Lock Screw	Can be loosened to adjust the horizontal rotation of the camera.								
7	microSD Card Slot	Accepts a microSD card for onboard storage of snapshots and video.								
8	Ethernet Jack	Connects to an RJ45 Ethernet port. Can be used with PoE to provide power to the camera.								
9	Cable Channels	Allow cables to exit the camera from the back or side.								
10	Cable Harness Port	Connects to the optional cable harness (not included).								
		<table border="0"> <tbody> <tr> <td>1. 12V IN</td> <td>6. 12V OUT</td> </tr> <tr> <td>2. GND</td> <td>7. GND</td> </tr> <tr> <td>3. AUD IN</td> <td>8. RESET</td> </tr> <tr> <td>4. AUD GND</td> <td>9. DI</td> </tr> <tr> <td>5. AUD OUT</td> <td>10. DO</td> </tr> </tbody> </table>	1. 12V IN	6. 12V OUT	2. GND	7. GND	3. AUD IN	8. RESET	4. AUD GND	9. DI
1. 12V IN	6. 12V OUT									
2. GND	7. GND									
3. AUD IN	8. RESET									
4. AUD GND	9. DI									
5. AUD OUT	10. DO									

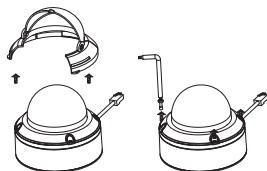
Optional Cable Harness (not included)



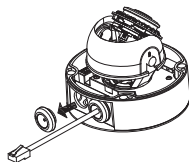
11	Cable Harness Connector	Connects to the DCS-6517. For more details on connecting the A/V cable, refer to the User Manual.
12	DI/DO Connector	I/O connectors for external devices. (12 V DC output not supported for the DCS-6517)
13	Reset Button	Press and hold the button for 10 seconds to reset the camera back to the factory default settings.
14	24 V Power Connector	Not supported for the DCS-6517.
15	Power Connector	Power connector for a 12 V DC power adapter (not included).
16	Audio Out (Green)	Connects to a speaker.
17	Audio In (Red)	Connects to a microphone.
18	BNC Connector	Not supported for the DCS-6517.

Connecting the Optional Cable Harness

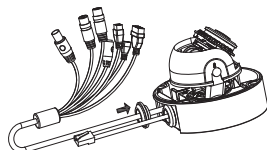
Remove the sun shield by lifting it off of the camera. Use the included security wrench to remove the 4 screws from the top of the camera, then remove the camera cover.



Remove a waterproofing plug from the side or bottom of the camera depending on how you want the cables to exit the camera.



Push the camera connector and cable through the hole, and insert the cable's waterproofing plug.

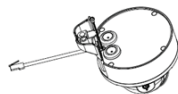


Make sure the plug is inserted properly to ensure a good seal.

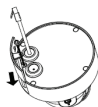
For side cable exit:
Attach the side cover via the provided screws.



Slide the cover over the cable ports.

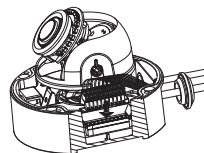


For bottom cable exit:
Attach the protective side cover via the provided screws.



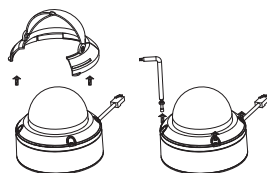
Connect the camera connector to the camera.

Reattach the camera cover using the security wrench to tighten the 3 screws, and reattach the sun shield.



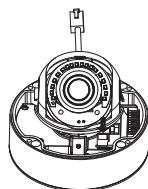
microSD Card Installation

Remove the sun shield by lifting it off of the camera. Use the included security wrench to remove the 4 screws from the top of the camera, then remove the camera cover.



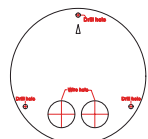
Insert the microSD card with the gold contacts facing the outside of the camera. To eject the microSD card, push the card into the slot.

Reattach the camera cover using the security wrench to tighten the 4 screws, and reattach the sun shield.



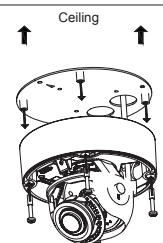
Mounting the Camera on the Ceiling

Locate a suitable position on the ceiling that is capable of supporting the weight of the camera. Attach the alignment sticker to the ceiling or wall.



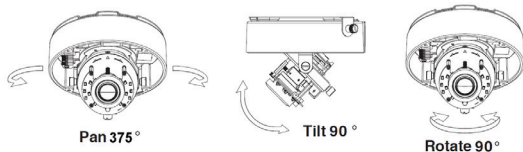
Align the mounting plate to the drilled holes in the ceiling surface then tighten the screws.

Align the camera to the mounting plate and screw the camera body to the plate tightly.



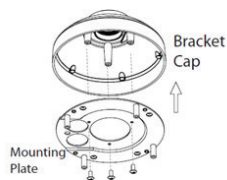
Adjusting the Camera's Lens

Adjust the Camera's Lens gimbal; Turn the lens module left and right, up and down and the orientation until the desired position is achieved. Tighten the pan, tilt and the adjustment screw once completed.

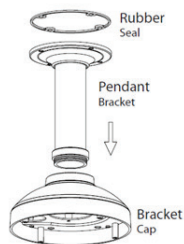


Installing the Pendant Mount (Optional)

Attach the mounting plate to the bracket cap using the three included screws.



Locate a suitable position on the ceiling for a 34 mm (+2 / -0 mm) hole to be cut. Use the included template to mark and cut the mounting holes.



Locate a suitable position on the ceiling for a 34 mm (+2 / -0 mm) hole to be cut. Use the included template to mark and cut the wiring hole.

Drill four 6 mm holes corresponding to the holes in the mounting template and insert the plastic anchors into these holes.

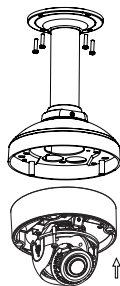
Place the rubber seal between the pendant bracket and the ceiling to ensure a waterproof seal between the ceiling and the bracket.

Attach the pendant bracket to the ceiling using the screws provided.

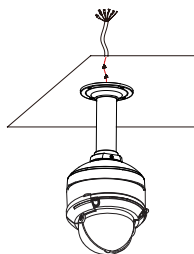
Attach the bracket cap to the bottom of the pendant bracket by rotating the cap counterclockwise to tighten it into place.

Insert the screw into the base of the pendant bracket at the top of the bracket cap to secure the bracket cap into place.

Thread an Ethernet cable and the power cable through the pendant bracket.

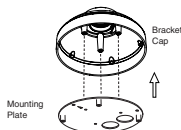


Place the camera body onto the bracket cap and attach the dome to the base of the camera using the four long screws and the security screw.



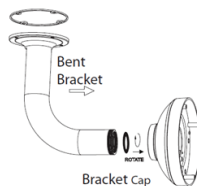
Installing the Right-Angle Mount (Optional)

Attach the mounting plate to the bracket cap using the included three screws.



Locate a suitable position on the ceiling for a 34 mm (+2 / -0 mm) hole to be cut. Use the included template to mark and cut the mounting holes.

Drill four 6 mm holes corresponding to the holes in the mounting template and insert the plastic anchors into these holes.



Place the rubber seal between the right-angle bracket and the ceiling to ensure a waterproof seal between the ceiling and the bracket.

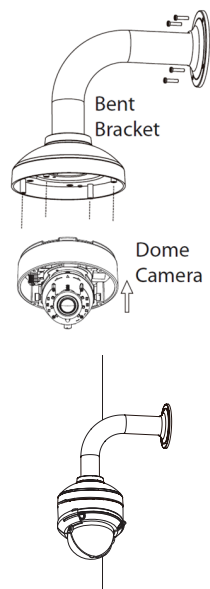
Attach the right-angle bracket to the ceiling using the screws provided.

Attach the bracket cap to the bottom of the right-angle bracket by rotating the cap counterclockwise to tighten it into place.

Insert the screw into the base of the right-angle bracket at the top of the bracket cap to secure the bracket cap into place.

Thread an Ethernet cable and the power cable through the pendant bracket.

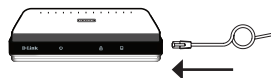
Place the camera body onto the bracket cap and attach the dome to the base of the camera using the three long screws and the security screw.



Connecting the Camera

Connection with a PoE Switch

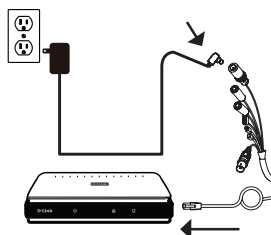
- Connect the Ethernet cable to your PoE switch or injector. The Ethernet cable will provide the camera with both power and a network connection.



If you have the optional cable harness, you can also use the following connection method:

General Connection Using 12 V DC Power Adapter (not included)

- Connect the Ethernet cable to your network.
- Connect your power adapter to the camera's power adapter connector, then plug in the power adapter.



Configuring the Camera

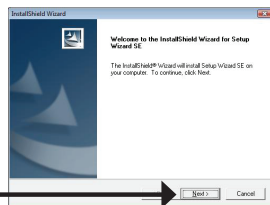
Insert the DCS-6517 CD into your computer's CD-ROM drive to begin the installation. If the Autorun function on your computer is disabled, or if the D-Link Launcher fails to start automatically, run **D:\autorun.exe**, where D: represents the drive letter of your CD-ROM drive.

Click **Setup Wizard** to begin the installation.

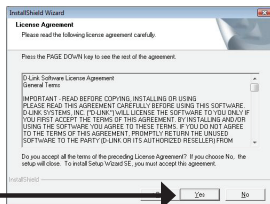


After clicking Setup Wizard, the following window will open.

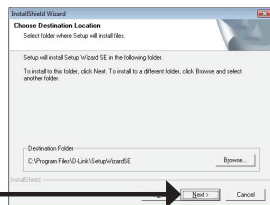
Click **Next** to continue.



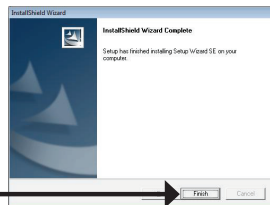
Click **Yes** to accept the License Agreement.



To start the installation process, click **Next**.



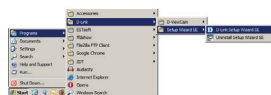
Note: The installation may take several minutes to finish.



Click **Finish** to complete the installation.

Viewing Your Camera via a Web Browser

Click on the **D-Link Setup Wizard SE** icon that was created in your Windows Start menu (**Start > D-Link > Setup Wizard SE**).



Select the camera and click **Link** to access the web configuration.



The Setup Wizard will automatically open your web browser to the IP address of the camera.



The first time you connect to the camera, you will be asked to set a password for the administrator account. After entering a password, click **Save**.

The camera's live video page will open, and you can now control and configure your camera. For additional information about web configuration, please refer to the user manual, which is available on the D-Link website.



Additional Information

Additional help and product information is available online at <http://www.dlink.com/>

Warranty Information

Please visit <http://warranty.dlink.com/> for warranty information for your region.

Installationsanleitung

Diese Installationsanleitung bietet Ihnen grundlegende Anleitungen zur Installation der DCS-6517 in Ihrem Netzwerk. Zusätzliche Informationen zur Verwendung der Kamera finden Sie im Benutzerhandbuch, das Ihnen auf der CD, die diesem Paket beiliegt, oder über die D-Link Support-Website zur Verfügung steht.

Packungsinhalt

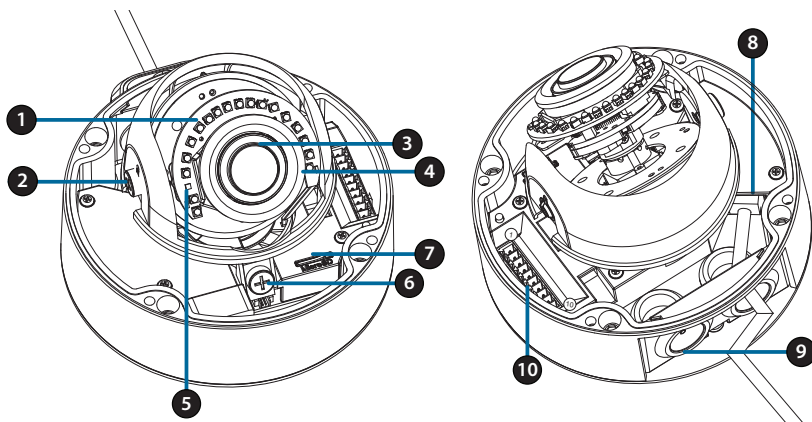
- DCS-6517 5 Megapixel H.265 Outdoor-Kuppelnetzwerkamera
- Ethernet-Kabel
- Adapter für Erweiterung
- Befestigungsplatte und Schrauben
- Sonnenschutz
- Seitliche Abdeckung
- Klebeschablone
- CD-ROM mit Software und Handbuch
- Installationsanleitung

Sollte einer der oben aufgeführten Artikel fehlen, so wenden Sie sich bitte an Ihren Fachhändler.

Sicherheitshinweis:

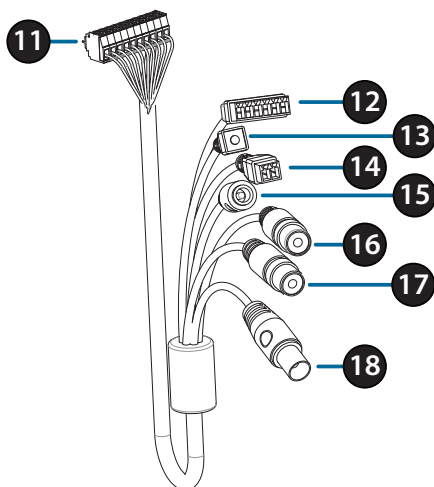
Installation und Wartungsarbeiten sollten nur von zertifizierten Technikern vorgenommen werden, zu jeder Zeit allen örtlich geltenden Richtlinien und Anforderungen entsprechen sowie verhindern, dass Ihr Garantieanspruch erlischt.

Hardware-Überblick



1	IR-LEDs	Beleuchtung für schwach ausgeleuchtete Umgebungen								
2	Neigungs-Feststellschraube	Kann gelockert werden, um den Neigungswinkel der Kamera anzupassen.								
3	Kameraobjektiv	Kameraobjektiv zur Aufnahme von Videobildern der Umgebung.								
4	Betriebsanzeige/Status-LED	Zeigt den aktuellen Status der Kamera.								
5	Lichtsensord	Misst die vorherrschenden Lichtverhältnisse und wechselt entsprechend zwischen Tag- und Nachsichtmodus.								
6	Horizontale Feststellschraube	Kann gelockert werden, um die horizontale Drehung der Kamera anzupassen.								
7	microSD-Karteneinschub	Für eine microSD-Karte zum Speichern von Fotos und Videos.								
8	Ethernet-Anschluss	Wird mit einem RJ45 Ethernet-Anschluss verbunden. Kann mit PoE für die Stromversorgung der Kamera verwendet werden.								
9	Kabelkanäle	Ermöglicht das Führen der Kabel aus der Kamera auf der Rückseite oder an der Seite.								
10	Kabelbaumanschluss	Wird mit dem optionalen Kabelbaum (nicht enthalten) verbunden.								
		<table border="0"> <tbody> <tr> <td>1. 12V IN</td> <td>6. 12V OUT</td> </tr> <tr> <td>2. GND (Masse)</td> <td>7. GND (Masse)</td> </tr> <tr> <td>3. AUD IN</td> <td>8. RESET (RÜCKSETZEN)</td> </tr> <tr> <td>4. AUD GND</td> <td>9. DI</td> </tr> <tr> <td>5. AUD OUT</td> <td>10. DO</td> </tr> </tbody> </table>	1. 12V IN	6. 12V OUT	2. GND (Masse)	7. GND (Masse)	3. AUD IN	8. RESET (RÜCKSETZEN)	4. AUD GND	9. DI
1. 12V IN	6. 12V OUT									
2. GND (Masse)	7. GND (Masse)									
3. AUD IN	8. RESET (RÜCKSETZEN)									
4. AUD GND	9. DI									
5. AUD OUT	10. DO									

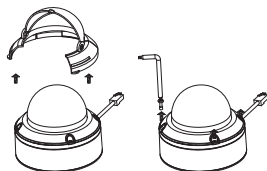
Optionaler Kabelbaum (nicht im Lieferumfang)



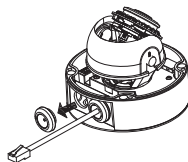
11	Kabelbaumanschluss	Wird mit dem Modell DCS-6517 verbunden. Weitere Informationen zum Anschluss des AVV-Kabels finden Sie im Benutzerhandbuch.
12	Steckverbinder für digitalen Ein- und Ausgang	E/A-Anschlüsse für externe Geräte. (12 V DC-Ausgang nicht unterstützt für die DCS-6517)
13	Rücksetztaste	Drücken und halten Sie den Knopf 10 Sekunden lang, um die Kameraeinstellungen auf die werkseitigen Standardeinstellungen zurückzusetzen.
14	24 V Stromanschluss	Nicht unterstützt für die DCS-6517.
15	Stromanschluss	Stromanschluss für ein 12 V DC-Netzteil (nicht im Lieferumfang)
16	Audio Aus (Grün)	Anschluss für einen Lautsprecher
17	Audio Ein (Rot)	Für den Anschluss eines Mikrofons
18	BNC-Stecker	Nicht unterstützt für die DCS-6517.

Für den Anschluss eines optionalen Kabelbaums

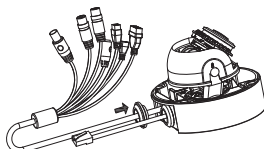
Entfernen Sie den Sonnenschutz, indem Sie ihn von der Kamera abnehmen. Verwenden Sie den enthaltenen Sicherheitsschraubendreher, um die 4 Schrauben oben aus der Kamera zu lösen und entfernen Sie dann die Kameraabdeckung.



Entfernen Sie einen wasserdichten Stopfen aus der Seite oder dem Boden der Kamera, je nachdem, wie Sie die Kabel aus der Kamera herausführen möchten.



Schieben Sie Kameranschluss und Kabel durch die Öffnung und setzen Sie den wasserdichten Stopfen des Kabels ein.

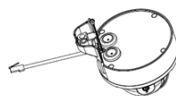


Achten Sie darauf, dass der Stopfen fest sitzt und die Öffnung gut abdichtet.

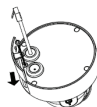
Bei seitlichem Austritt der Kabel:
Bringen Sie die Seitenabdeckung mit den vorgesehenen Schrauben an.



Schieben Sie die Abdeckungen über die Kabelanschlüsse.

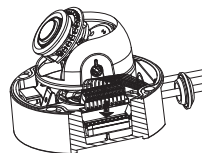


Bei unterem Austritt der Kabel:
Bringen Sie die Seitenabdeckung mit den vorgesehenen Schrauben an.



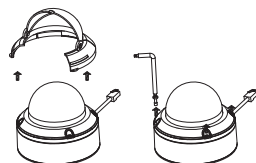
Schließen Sie den Kamerastecker an der Kamera an.

Bringen Sie die Kameraabdeckung mit dem Sicherheitsschraubendreher wieder an, ziehen Sie die 3 Schrauben fest und setzen Sie den Sonnenschutz wieder auf.

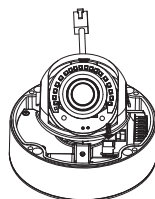


Installation der microSD-Karte

Entfernen Sie den Sonnenschutz, indem Sie ihn von der Kamera abnehmen. Verwenden Sie den enthaltenen Sicherheitsschraubendreher, um die 4 Schrauben oben aus der Kamera zu lösen und entfernen Sie dann die Kameraabdeckung.



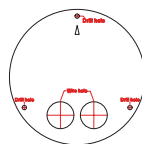
Stecken Sie die microSD-Karte mit den goldfarbenen Kontakten der Außenseite der Kamera zugewandt, in den Steckplatz. Um die microSD-Karte auszuwerfen, drücken Sie sie leicht in den Steckplatz.



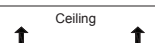
Bringen Sie die Kameraabdeckung mit dem Sicherheitsschraubendreher wieder an, ziehen Sie die 4 Schrauben fest und setzen Sie den Sonnenschutz wieder auf.

Befestigung der Kamera an der Decke

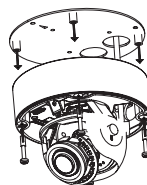
Bestimmen Sie einen geeigneten Bereich unter der Decke, der das Gewicht der Kamera problemlos tragen kann. Bringen Sie die Klebeschablone an der Decke oder der Wand an.



Richten Sie die Befestigungsplatte an den Bohrungen in der Deckenfläche aus und ziehen Sie dann die Schrauben fest.

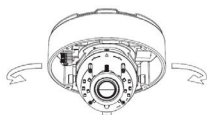


Richten Sie die Kamera an der Befestigungsplatte aus und schrauben Sie das Kameragehäuse fest an der Platte an.

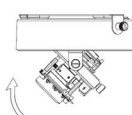


Einstellen des Kameraobjektivs

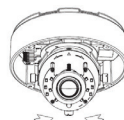
Passen Sie den Kardanring des Kameraobjektivs an; drehen Sie das Objektivmodul nach links und rechts, nach oben und unten und führen Sie die Ausrichtung durch, bis die gewünschte Position erreicht ist. Ziehen Sie danach die Schraube zum Schwenken, Neigen und Einstellen fest.



Schwenken 375°



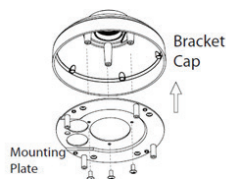
Neigen 90°



Drehen 90°

Installation der Hängemontagehalterung (Optional)

Bringen Sie die Befestigungsplatte mit den drei enthaltenen Schraube an der Bügelkappe an.



Suchen Sie eine geeignete Position an der Decke, an der eine Bohrung von 34 mm (+2 / -0 mm) möglich ist. Verwenden Sie die enthaltenen Schablone, um die Bohrungen zu markieren und vorzunehmen.

Suchen Sie eine geeignete Position an der Decke, an der eine Bohrung von 34 mm (+2 / -0 mm) möglich ist. Verwenden Sie die enthaltenen Schablone, um die Kabelbohrungen zu markieren und vorzunehmen.

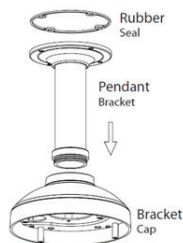
Bohren Sie vier 6 mm-Löcher anhand den Öffnungen in der Befestigungsschablone und setzen Sie die Kunststoffdübel in diese Löcher ein.

Platzieren Sie die Gummidichtung zwischen Hängebügel und Decke, um eine wasserdichte Versiegelung zwischen Decke und Bügel sicherzustellen.

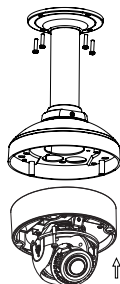
Bringen Sie die Hängemontagehalterung mithilfe der mitgelieferten Schrauben an der Decke an.

Bringen Sie die Bügelkappe unten am Hängebügel an, indem Sie die Kappe gegen den Uhrzeigersinn festdrehen.

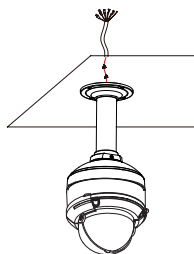
Setzen Sie die Schraube in die Basis der Hängemontagehalterung oben an der Bügelkappe ein, um die Bügelkappe zu sichern.



Führen Sie ein Ethernetkabel und das Stromkabel durch die Hängemontagehalterung.

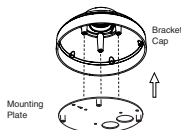


Setzen Sie das Kameragehäuse in die Bügelkappe und bringen Sie die Kuppel mit den vier langen Schrauben und der Sicherheitsschraube an der Basis der Kamera an.



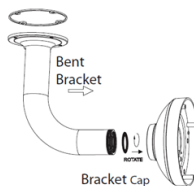
Installation der rechtwinkligen Montagehalterung (Optional)

Bringen Sie die Befestigungsplatte mit den drei enthaltenen Schraube an der Bügelkappe an.



Suchen Sie eine geeignete Position an der Decke, an der eine Bohrung von 34 mm (+2 / -0 mm) möglich ist. Verwenden Sie die enthaltene Schablone, um die Bohrungen zu markieren und vorzunehmen.

Bohren Sie vier 6 mm-Löcher anhand den Öffnungen in der Befestigungsschablone und setzen Sie die Kunststoffdübel in diese Löcher ein.



Platzieren Sie die Gummidichtung zwischen rechtwinkliger Montagehalterung und Decke, um eine wasserdichte Versiegelung zwischen Decke und Bügel sicherzustellen.

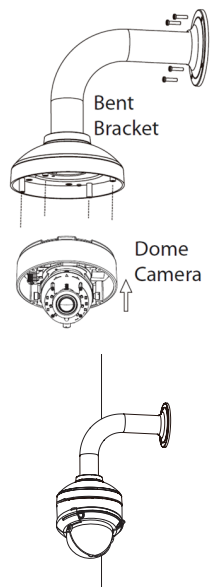
Bringen Sie die rechtwinklige Montagehalterung mithilfe der mitgelieferten Schrauben an der Decke an.

Bringen Sie die Bügelkappe unten an der rechtwinkligen Montagehalterung an, indem Sie die Kappe gegen den Uhrzeigersinn festdrehen.

Setzen Sie die Schraube in die Basis der rechtwinkligen Montagehalterung oben an der Bügelkappe ein, um die Bügelkappe zu sichern.

Führen Sie ein Ethernetkabel und das Stromkabel durch die Hängemontagehalterung.

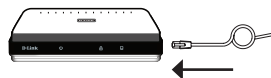
Setzen Sie das Kameragehäuse in die Bügelkappe und bringen Sie die Kuppel mit den drei langen Schrauben und der Sicherheitsschraube an der Basis der Kamera an.



Anschluss der Kamera

Anschluss mit einem PoE Switch

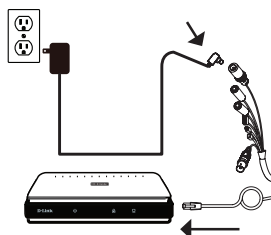
- Schließen Sie das Ethernet-Kabel an Ihren PoE-Switch oder einen Injektor an. Das Ethernet-Kabel versorgt die Kamera mit Netzstrom und einer Netzwerkverbindung.



Wenn Sie den optionalen Kabelbaum erworben haben, können Sie die folgende Anschlussmethode verwenden:

Allgemeiner Anschluss mit 12 V DC-Netzteil (nicht im Lieferumfang)

- Verbinden Sie das Ethernet-Kabel mit Ihrem Netzwerk.
- Verbinden Sie Ihr Netzteil mit dem Stromanschluss der Kamera, dann stecken Sie das Netzteil ein.



Konfiguration der Kamera

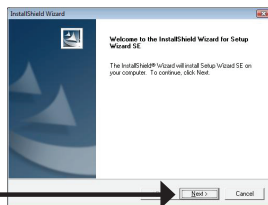
Legen Sie die DCS-6517 CD in das CD-ROM-Laufwerk Ihres Computers, um die Installation zu beginnen. Sollte die CD auf Ihrem Computer nicht automatisch ausgeführt werden oder der D-Link Launcher nicht automatisch starten, führen Sie **D:\autorun.exe** aus, wobei D: für den Buchstaben Ihres CD-ROM-Laufwerks steht.

Klicken Sie auf **Setup Wizard** (Einrichtungsassistent), um die Installation zu beginnen. →

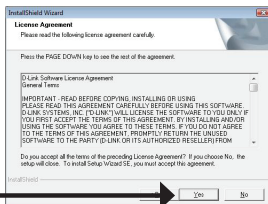


Nachdem Sie auf „Setup Wizard“ (Einrichtungsassistent) geklickt haben, wird das folgende Fenster geöffnet.

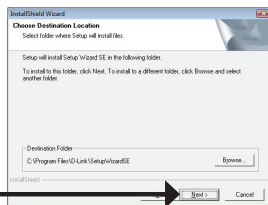
Klicken Sie auf **Next** (Weiter), um fortzufahren. →



Klicken Sie auf **Yes** (Ja), um die Lizenzvereinbarung zu akzeptieren. →

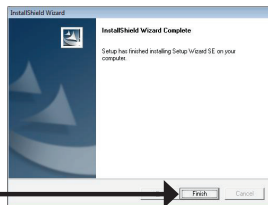


Um den Installationsprozess zu starten, klicken Sie auf **Next** (Weiter). →



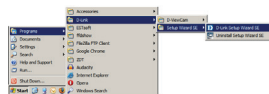
Hinweis: Der Installationsvorgang kann mehrere Minuten dauern.

Klicken Sie auf **Finish** (Fertig stellen), um die Installation abzuschließen. →



Anzeige Ihrer Kamera über einen Webbrowser

Klicken Sie auf das Symbol für den **D-Link Setup-Assistenten SE**, der in Ihrem Windows-Startmenü (**Start > D-Link > Setup Wizard SE**) erstellt wurde.

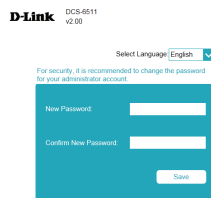


Wählen Sie die Kamera aus und klicken Sie auf **Link**, um auf die Web-Konfiguration zuzugreifen.



Der Einrichtungsassistent öffnet automatisch Ihren Webbrowser mit der IP-Adresse der Kamera.

Wenn Sie sich zum ersten Mal mit der Kamera verbinden, werden Sie aufgefordert, ein Kennwort für das Administratorkonto zu erstellen. Klicken Sie nach Eingabe Ihres Kennwortes auf **Save** (Speichern).



Die Live-Videoseite der Kamera wird geöffnet, und Sie können jetzt Ihre Kamera steuern und konfigurieren. Weitere Informationen zur Web-Konfiguration finden Sie im Benutzerhandbuch, das auf der D-Link-Website verfügbar ist.



Weitere Informationen

Zusätzliche Hilfe und Produktinformationen stehen Ihnen online unter <http://www.dlink.com/> zur Verfügung.

Garantiebestimmungen

Landesspezifische Informationen zu Gewährleistungen finden Sie unter <http://warranty.dlink.com/>.

Guide d'installation rapide

Ce guide d'installation rapide fournit des instructions de base pour l'installation du DCS-6517. Pour obtenir des informations complémentaires sur l'utilisation de la caméra, consultez le Manuel d'utilisation, disponible sur le CD joint à ce coffret, ou sur le site Web d'assistance D-Link.

Contenu de la boîte

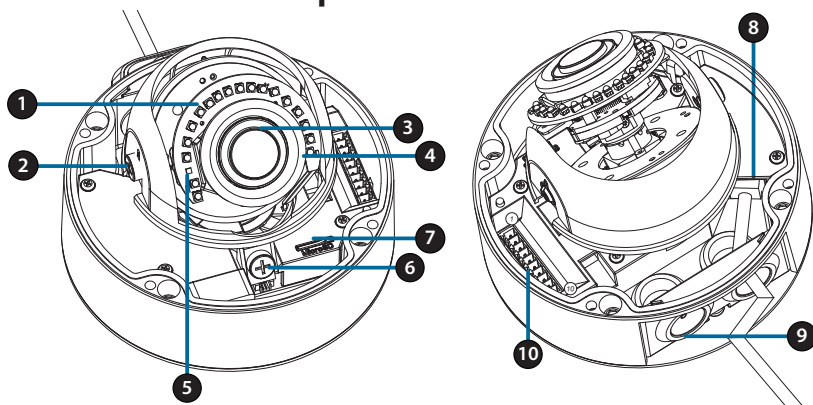
- DCS-6517 Caméra réseau extérieure à dôme H.265 5 mégapixels
- Câble Ethernet
- Adaptateur de rallonge
- Plaque de montage et vis
- Protection solaire
- Capot latéral
- Autocollant d'alignement
- Manuel et logiciel sur CD-ROM
- Guide d'installation rapide

Contactez votre revendeur s'il manque l'un des éléments ci-dessus.

Remarque de sécurité :

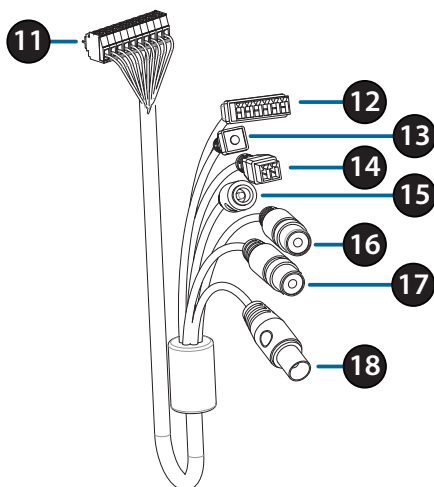
L'installation et l'entretien doivent être réalisés par des techniciens qualifiés afin d'être conformes à tous les codes locaux et d'éviter d'annuler votre garantie.

Description du matériel



1	Diodes IR	Fournissent un éclairage pour les environnements sombres.								
2	Vis de verrouillage de l'inclinaison	Peut être desserrée pour régler l'angle d'inclinaison de la caméra.								
3	Objectif de la caméra	Objectif de caméra pour enregistrer une vidéo de la zone environnante.								
4	Voyant d'alimentation/état	Indique l'état actuel de la caméra.								
5	Capteur de lumière	Mesure les conditions d'éclairage et alterne entre le mode de jour ou nuit de manière appropriée.								
6	Vis de verrouillage horizontal	Peut-être desserrée pour régler la rotation horizontale de la caméra.								
7	Port de carte microSD	Accepte les cartes microSD pour le stockage embarqué des instantanés et des vidéos.								
8	Connecteur Ethernet	Permet la connexion à un port Ethernet RJ45. Peut être utilisé avec du PoE pour alimenter la caméra.								
9	Goulottes des câbles	Permet de sortir les câbles de la caméra par l'arrière ou le côté.								
10	Port de faisceau de câbles	Permet de connecter le faisceau de câbles optionnel (non inclus)								
		<table border="0"> <tbody> <tr> <td>1. 12V IN</td> <td>6. 12V OUT</td> </tr> <tr> <td>2. GND</td> <td>7. GND</td> </tr> <tr> <td>3. AUD IN</td> <td>8. astre tête RESET</td> </tr> <tr> <td>4. AUD GND</td> <td>9. DI</td> </tr> <tr> <td>5. AUD OUT</td> <td>10. DO</td> </tr> </tbody> </table>	1. 12V IN	6. 12V OUT	2. GND	7. GND	3. AUD IN	8. astre tête RESET	4. AUD GND	9. DI
1. 12V IN	6. 12V OUT									
2. GND	7. GND									
3. AUD IN	8. astre tête RESET									
4. AUD GND	9. DI									
5. AUD OUT	10. DO									

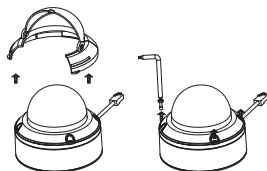
Faisceau de câbles optionnel (non fourni)



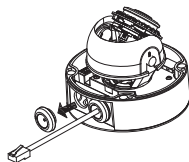
11	Connecteur pour faisceau de câbles	Se connecte au DCS-6517. Pour plus de détails sur le raccordement du câble A/V, reportez-vous au manuel de l'utilisateur.
12	Connecteur DI/DO	Connecteurs E/S pour périphériques externes (Sortie 12 V cc non prise en charge pour le DCS-6517)
13	Bouton de réinitialisation	Appuyez dessus et maintenez-le enfoncé pendant 10 secondes pour réinitialiser la caméra à ses paramètres d'usine
14	Connecteur d'alimentation 24V	Non pris en charge pour le DCS-6517.
15	Connecteur d'alimentation	Connecteur d'alimentation pour un adaptateur secteur 12 V cc (non fourni).
16	Sortie audio (vert)	Raccordement à un haut-parleur.
17	Entrée audio (rouge)	Raccordement à un microphone.
18	Connecteur BNC	Non pris en charge pour le DCS-6517.

Raccordement au faisceau de câbles optionnel

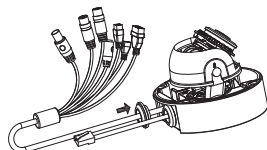
Ôtez l'écran de protection solaire en le soulevant hors de la caméra. Utiliser la clé de sécurité fournie pour retirer les 4 vis de la partie supérieure de la caméra, puis enlevez le capot de la caméra.



Enlever la fiche étanche de l'arrière ou de la partie inférieure de la caméra en fonction de la manière dont vous souhaitez que les câbles sortent de celle-ci.



Poussez le connecteur de la caméra et le câble dans l'orifice et insérez la fiche étanche du câble.

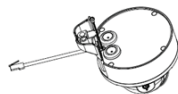


Assurez-vous que la fiche est correctement insérée pour assurer une bonne étanchéité.

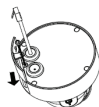
Pour une sortie des câbles sur le côté :
Fixez le capot latéral à l'aide des vis fournies.



Glissez le capot sur les ports des câbles.

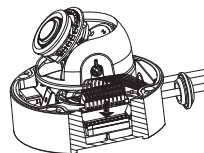


Pour une sortie des câbles par l'arrière :
Fixez le capot latéral de protection à l'aide des vis fournies.



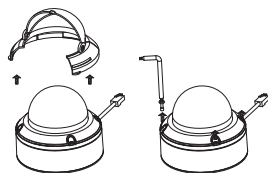
Raccordez le connecteur de la caméra sur celle-ci.

Remonter le capot de la caméra à l'aide de la clé de sécurité pour serrer les 3 vis et monter à nouveau l'écran de protection solaire.

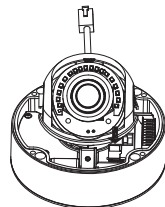


Installation de la carte microSD

Ôtez l'écran de protection solaire en le soulevant hors de la caméra. Utilisez la clé de sécurité fournie pour enlever les 4 vis de la partie supérieure de la caméra, puis enlevez le capot de la caméra.



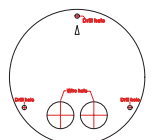
Insérez la carte microSD avec les contacts dorés dirigés vers l'extérieur de la caméra. Pour éjecter la carte microSD, poussez-la dans la fente.



Remontez le capot de la caméra à l'aide de la clé de sécurité pour serrer les 4 vis, puis remontez l'écran de protection solaire.

Montage de la caméra au plafond

Localisez un endroit approprié sur le plafond qui soit en mesure de supporter le poids de la caméra. Apposez l'autocollant d'alignement sur le plafond ou le mur.

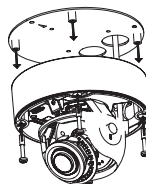


Ceiling



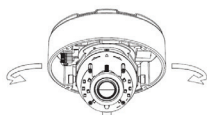
Alignez la plaque de montage sur les orifices percés dans la surface du plafond, puis serrez les vis.

Alignez la caméra sur la plaque de montage et vissez fermement le corps de la caméra sur la plaque.

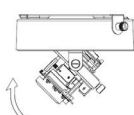


Réglage de l'objectif de la caméra

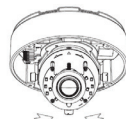
Réglez le cardan de l'objectif de la caméra ; tournez le module de l'objectif vers la gauche et la droite, en haut et en bas et l'orientation jusqu'à obtention de la position souhaitée. Une fois terminé, serrez la vis de réglage du panoramique et de l'inclinaison.



Panoramique de 375°



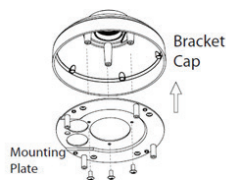
Inclinaison de 90°



Rotation de 90°

Installation de la monture à suspension (optionnelle)

Fixez la plaque de montage sur le capuchon de support à l'aide des trois vis fournies.



Repérez une position appropriée sur le plafond pour percer un orifice de 34 mm (+2 / -0 mm). Utilisez le patron fourni pour marquer et découper les orifices de montage.

Repérez une position appropriée sur le plafond pour percer un orifice de 34 mm (+2 / -0 mm). Utilisez le patron fourni pour marquer et découper l'orifice du câblage.

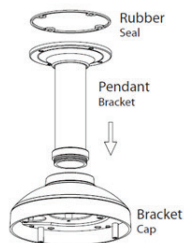
Percez des orifices de 6 mm correspondant aux orifices du patron de montage et insérez les encres en plastique dans ces orifices.

Placez le joint en caoutchouc entre le support à suspension et le plafond pour assurer l'étanchéité entre le plafond et le support.

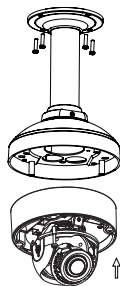
Montez le support à suspension sur le plafond à l'aide des vis fournies.

Montez le capuchon du support sur la partie inférieure du support à suspension en faisant tourner le capuchon dans le sens inverse des aiguilles d'une montre pour le serrer et le maintenir en place.

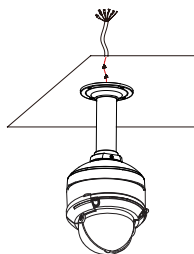
Insérez la vis dans la base du support à suspension en haut du capuchon du support pour mettre fermement en place le capuchon du support.



Faites passer un câble Ethernet et le câble d'alimentation à travers le support à suspension.



Placez le corps de la caméra sur le capuchon du support et fixez le dôme sur la base de la caméra à l'aide des quatre longues vis et de la vis de sécurité.

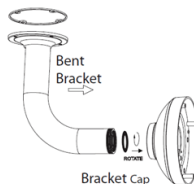
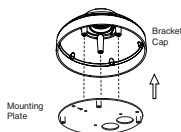


Installation de la monture à angle droit (optionnelle)

Fixez la plaque de la monture sur le capuchon du support à l'aide des trois vis fournies.

Repérez une position appropriée sur le plafond pour percer un orifice de 34 mm (+2 / -0 mm). Utilisez le patron fourni pour marquer et découper les orifices de montage.

Percez des orifices de 6 mm correspondant aux orifices du patron de montage et insérez les encren en plastique dans ces orifices.



Placez le joint en caoutchouc entre le support à angle droit et le plafond pour assurer l'étanchéité entre le plafond et le support.

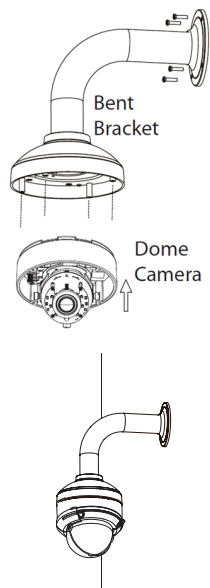
Fixez le support à angle droit sur le plafond à l'aide des vis fournies.

Fixez le capuchon du support sur la partie inférieure de la monture à angle droit en faisant tourner le capuchon dans le sens inverse des aiguilles d'une montre pour le serrer et le maintenir en place.

Insérer la vis dans la base du support à angle droit, en haut du capuchon du support pour mettre fermement en place le capuchon du support.

Faites passer un câble Ethernet et le câble d'alimentation à travers le support à suspension.

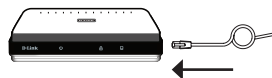
Placez le corps de la caméra sur le capuchon du support et fixez le dôme sur la base de la caméra à l'aide des trois longues vis et de la vis de sécurité.



Connexion de la caméra

Connexion à l'aide d'un commutateur PoE

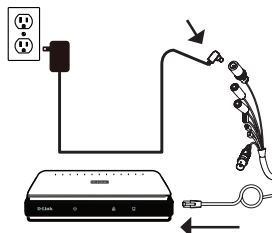
- Connectez le câble Ethernet à votre commutateur ou injecteur PoE. Le câble Ethernet fournit l'alimentation et une connexion réseau à la caméra.



Si vous disposez du faisceau de câbles optionnel, vous pouvez également utiliser la méthode de connexion suivante :

Connexion générale utilisant un adaptateur électrique 12 V cc (non fourni)

- Connectez le câble Ethernet à votre réseau.
- Connectez une extrémité de l'adaptateur secteur sur le connecteur d'alimentation situé sur votre caméra et l'autre sur une prise murale.



Configuration de la caméra

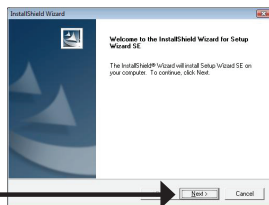
Insérez le CD de la DCS-6517 dans le lecteur de CD-ROM de l'ordinateur pour lancer l'installation. Si la fonction d'exécution automatique de votre ordinateur est désactivée ou si le dispositif de lancement D-Link ne parvient pas à démarrer automatiquement, exécutez **D:\autorun.exe** (où D: représente la lettre de votre lecteur de CD-ROM).

Cliquez sur **Setup Wizard** (Assistant de configuration) pour lancer l'installation.

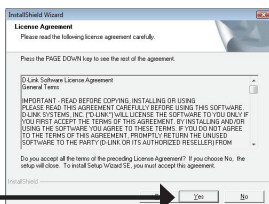


Après avoir cliqué sur l'Assistant de configuration, la fenêtre suivante s'ouvre.

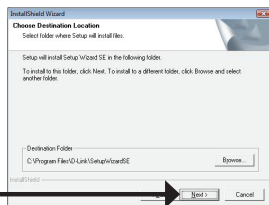
Cliquez sur **Next** (Suivant) pour continuer.



Cliquez sur **Yes** (Oui) pour accepter le License Agreement (Accord de licence).

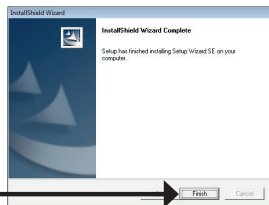


Pour lancer l'installation, cliquez sur **Next** (Suivant).



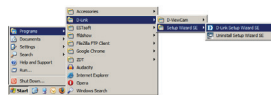
Remarque : L'installation peut prendre quelques minutes.

Cliquez sur **Finish** (Terminer) pour terminer l'installation.



Affichage de votre caméra via un navigateur Web

Cliquez sur l'icône **D-Link Setup Wizard SE** (Assistant de configuration D-Link SE) dans le menu Démarrer de Windows (**Start > D-Link > Setup Wizard SE**) (Démarrer > D-Link > Assistant de configuration SE).

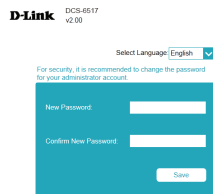


Sélectionnez la caméra, puis cliquez sur **Link** (Connexion) pour accéder à la configuration Web.



L'Assistant de configuration ouvre automatiquement votre navigateur Web à l'adresse IP de la caméra.

La première fois que vous vous connectez à la caméra, vous êtes invité à configurer un mot de passe pour le compte administrateur. Après avoir saisi un mot de passe, cliquez sur **Save** (Enregistrer).



La page vidéo en direct de la caméra s'ouvre et vous pouvez maintenant commander et configurer votre caméra. Pour obtenir des informations complémentaires sur la configuration Web, reportez-vous au manuel d'utilisation disponible sur le site Web D-Link.



Informations complémentaires

Vous trouverez une aide supplémentaire et des informations en ligne sur le produit à l'adresse <http://www.dlink.com/>

Informations sur la garantie

Consultez le site <http://warranty.dlink.com/> pour prendre connaissance de la garantie appliquée dans votre région.

Guía de instalación rápida

Esta guía de instalación proporciona instrucciones básicas para la instalación de la DCS-6517. Para obtener información adicional acerca de cómo utilizar la cámara, consulte el Manual del usuario disponible en el CD incluido en el paquete o en el sitio web de asistencia de D-Link.

Contenido de la caja

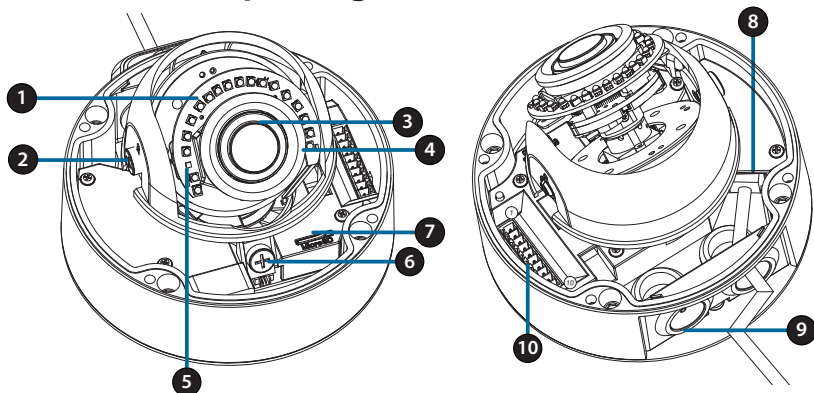
- DCS-6517 Cámara de red domo para exteriores de 5 megapíxeles H.265
- Cable Ethernet
- Adaptador de extensión
- Placa de montaje y tornillos
- Parasol
- Cubierta lateral
- Pegatina de alineación
- Manual y software en CD-ROM
- Guía de instalación rápida

Si falta cualquiera de los componentes anteriores, póngase en contacto con el proveedor.

Aviso de seguridad:

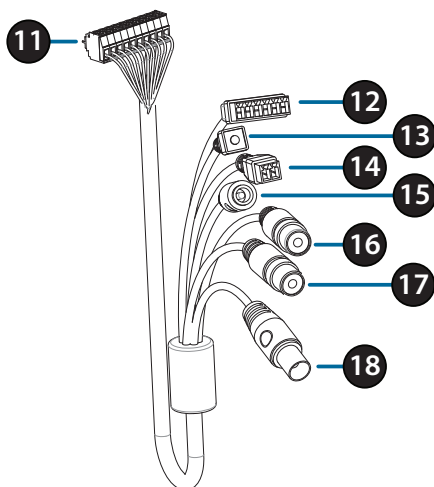
La instalación y el mantenimiento deben realizarlo técnicos cualificados con el fin de cumplir con todos los códigos locales y evitar la anulación de la garantía.

Descripción general del hardware



1	LED IR	Proporcionan iluminación para entornos con poca luz.								
2	Tornillo de bloqueo de inclinación	Se puede aflojar para ajustar el ángulo de inclinación de la cámara.								
3	Lente de la cámara	Lente de la cámara para grabar vídeo de la zona circundante.								
4	LED de alimentación/ estado	Indica el estado actual de la cámara.								
5	Sensor de luz	Mide las condiciones de iluminación y alterna entre los modos de visión diurna y nocturna en consecuencia.								
6	Tornillo de bloqueo horizontal	Se puede aflojar para ajustar la rotación horizontal de la cámara.								
7	Bahía para tarjetas microSD	Acepta una tarjeta microSD para el almacenamiento integrado de instantáneas y vídeo.								
8	Clavija Ethernet	Se conecta a un puerto de Ethernet RJ45. Se puede usar con PoE para alimentar la cámara.								
9	Canales para cables	Permiten que los cables salgan de la cámara desde la parte posterior o lateral.								
10	Puerto del arnés para cables	Se conecta al arnés para el cable óptico (no incluido).								
		<table border="0"> <tbody> <tr> <td>1. ENTRADA 12V</td> <td>6. SALIDA 12V</td> </tr> <tr> <td>2. Toma de tierra</td> <td>7. Toma de tierra</td> </tr> <tr> <td>3. ENTRADA AUD</td> <td>8. REINICIO</td> </tr> <tr> <td>4. TIERRA AUD</td> <td>9. DI</td> </tr> <tr> <td>5. SALIDA AUD</td> <td>10. DO</td> </tr> </tbody> </table>	1. ENTRADA 12V	6. SALIDA 12V	2. Toma de tierra	7. Toma de tierra	3. ENTRADA AUD	8. REINICIO	4. TIERRA AUD	9. DI
1. ENTRADA 12V	6. SALIDA 12V									
2. Toma de tierra	7. Toma de tierra									
3. ENTRADA AUD	8. REINICIO									
4. TIERRA AUD	9. DI									
5. SALIDA AUD	10. DO									

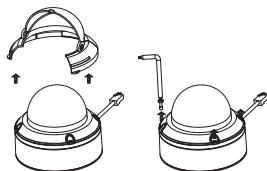
Arnés opcional para cables (no incluido)



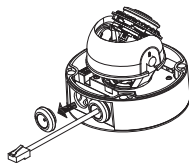
11	Conector del arnés para cables	Se conecta a la DCS-6517. Para obtener más información sobre la conexión del cable A/V, consulte el Manual del usuario.
12	Conector de DI/DO	Conectores de E/S para dispositivos externos. (salida de CC de 12 V no admitida para el DCS-6517)
13	Botón de reinicio	Pulse y mantenga pulsado el botón durante 10 segundos para reiniciar la cámara en los parámetros predeterminados de fábrica
14	Conector de alimentación de 24 V	No se admite para la DCS-6517.
15	Conector de alimentación	Conector de alimentación para un adaptador de alimentación de CC de 12 V (no incluido).
16	Salida de audio (verde)	Se conecta a un altavoz.
17	Entrada de audio (rojo)	Se conecta a un micrófono.
18	Conector BNC	No se admite para la DCS-6517.

Conexión del arnés opcional para cables

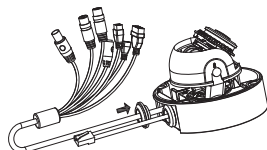
Retire el parasol levantándolo hacia fuera de la cámara. Utilice la llave de seguridad incluida para retirar los 4 tornillos de la parte superior de la cámara y, a continuación, retire la cubierta de la cámara.



Retire el tapón de impermeabilización del lateral o de la parte inferior de la cámara, según por dónde desea que los cables salgan de la cámara.



Pase el conector de la cámara y el cable a través del orificio e inserte el tapón de impermeabilización del cable.

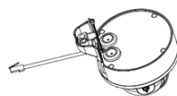


Asegúrese de insertar correctamente el tapón para garantizar una buena estanqueidad.

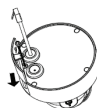
Para la salida de cables por el lateral:
Acople la cubierta lateral con los tornillos suministrados.



Deslice la cubierta sobre los puertos de los cables.

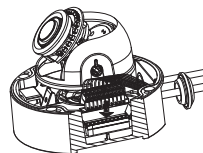


Para la salida de cables por la parte inferior:
Acople la cubierta lateral protectora con los tornillos suministrados.



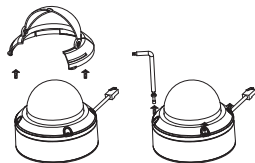
Conecte el conector de la cámara a la cámara.

Vuelva a conectar la cubierta de la cámara con la llave de seguridad para apretar los 3 tornillos; vuelva a colocar el parasol.

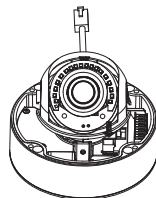


Instalación de la tarjeta microSD

Retire el parasol levantándolo hacia fuera de la cámara. Utilice la llave de seguridad incluida para retirar los 4 tornillos de la parte superior de la cámara y, a continuación, retire la cubierta de la cámara.



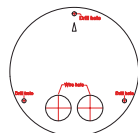
Inserte la tarjeta microSD con los contactos dorados orientados hacia el exterior de la cámara. Para expulsar la tarjeta microSD, empuje la tarjeta microSD hacia la ranura.



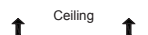
Vuelva a conectar la cubierta de la cámara con la llave de seguridad para apretar los 4 tornillos; vuelva a colocar el parasol.

Montaje de la cámara en el techo

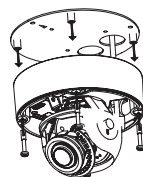
Localice una posición adecuada del techo que pueda soportar el peso de la cámara. Fije la pegatina de alineación en el techo o la pared.



Alinee la placa de montaje con los orificios practicados en la superficie del techo y, a continuación, apriete los tornillos.

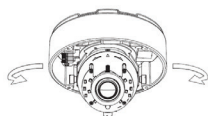


Alinee la cámara con la placa de montaje y atornille el cuerpo de la cámara a la placa con firmeza.

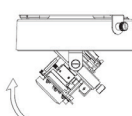


Ajuste de la lente de la cámara

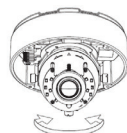
Ajuste el cardán de la lente de la cámara; gire el módulo de la lente a izquierda y derecha, arriba y abajo hasta conseguir la posición que desee. Apriete la panorámica e inclinación y el tornillo de ajuste cuando finalice.



Panorámica 375°



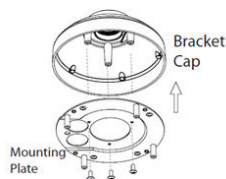
Inclinación 90°



Giro de 90°

Instalación del montaje suspendido (opcional)

Acople la placa de montaje al tapón de soporte con los tres tornillos incluidos.



Localice una posición idónea en el techo para practicar un orificio de 34 mm (+2 / -0 mm). Use la plantilla incluida para marcar y perforar los orificios de montaje.

Localice una posición idónea en el techo para practicar un orificio de 34 mm (+2 / -0 mm). Use la plantilla incluida para marcar y perforar el orificio de montaje.

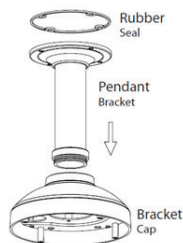
Practique cuatro orificios de 6 mm correspondientes a los de la plantilla de montaje e inserte los tacos de plástico en dichos orificios.

Coloque el sello de goma entre el soporte suspendido y el techo para asegurar un cierre hermético impermeable entre el techo y el soporte.

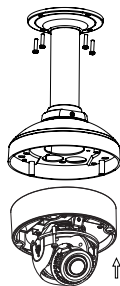
Acople el soporte suspendido al techo utilizando los tornillos suministrados.

Acople el tapón de soporte a la parte inferior del soporte suspendido girando el tapón en el sentido opuesto al de las agujas del reloj para apretarlo en su sitio.

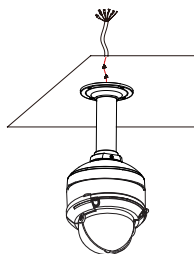
Inserte el tapón en la base del soporte suspendido en la parte superior del tapón del soporte para asegurarlo en su sitio.



Pase el cable Ethernet y el cable de alimentación por el soporte suspendido.



Coloque el cuerpo de la cámara en el soporte y asegure la base de la misma utilizando los cuatro tornillos largos y el tornillo de seguridad.

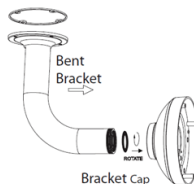
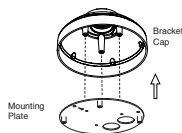


Instalación del montaje en ángulo recto (opcional)

Acoople la placa de montaje al tapón de soporte con los tres tornillos incluidos.

Localice una posición idónea en el techo para practicar un orificio de 34 mm (+2 / -0 mm). Use la plantilla incluida para marcar y cortar los orificios de montaje.

Practique cuatro orificios de 6 mm correspondientes a los de la plantilla de montaje e inserte los tacos de plástico en dichos orificios.



Coloque el sello de goma entre el soporte en ángulo recto y el techo para asegurar un cierre hermético impermeable entre el techo y el soporte.

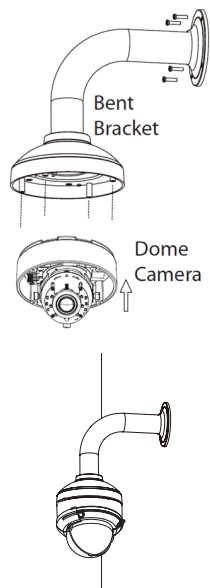
Acople el soporte en ángulo recto al techo utilizando los tornillos suministrados.

Acople el tapón de soporte a la parte inferior del soporte en ángulo recto girando el tapón en el sentido opuesto al de las agujas del reloj para apretarlo en su sitio.

Inserte el tapón en la base del soporte en ángulo recto en la parte superior del tapón del soporte para asegurar esto en su sitio.

Pase el cable Ethernet y el cable de alimentación por el soporte suspendido.

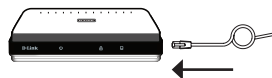
Coloque el cuerpo de la cámara en el tapón del soporte y acople el domo a la base de la cámara utilizando los tres tornillos largos y el tornillo de seguridad.



Conexión de la cámara

Conexión con un conmutador PoE

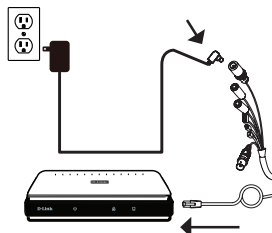
- Conecte el cable Ethernet al conmutador o inyector PoE. El cable Ethernet proporcionará a la cámara tanto alimentación como una conexión de red.



Si tiene el **arnés opcional para cables**, también podrá usar el siguiente método de conexión:

Conexión general mediante adaptador de alimentación de CC de 12 V (no incluido)

- Conecte el cable Ethernet a la red.
- Conecte el adaptador de alimentación al conector de alimentación de la cámara y enchufe el adaptador de alimentación.



Configuración de la cámara

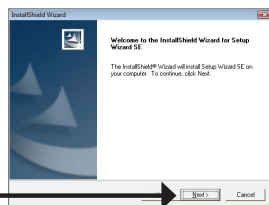
Inserte el CD de la DCS-6517 en la unidad de CD-ROM del ordenador para comenzar la instalación. Si la función de ejecución automática del ordenador está desactivada o si el iniciador de D-Link no se inicia automáticamente, ejecute **D:\autorun.exe** (donde D: representa la letra de unidad de la unidad de CD-ROM).

Haga clic en **Asistente para la instalación** para comenzar la instalación.

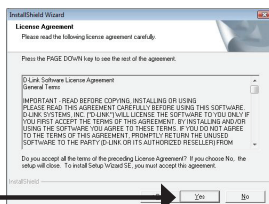


Después de hacer clic en el Asistente de configuración, se abrirá la ventana siguiente.

Haga clic en **Siguiente** para continuar.

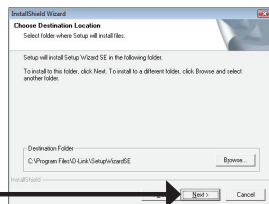


Haga clic en **Sí** para aceptar el acuerdo de licencia.

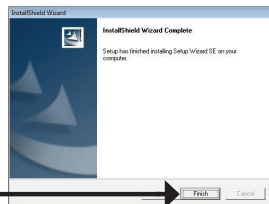


Para iniciar el proceso de instalación, haga clic en **Siguiente**.

Nota: la instalación puede tardar algunos minutos en finalizar.

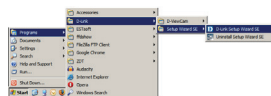


Haga clic en **Finalizar** para finalizar la instalación.



Visualización de su cámara a través de un explorador de web

Haga clic en el icono **Asistente de configuración SE D-Link** que se creó en el menú Inicio de Windows (**Inicio > D-Link > Asistente de configuración SE**).

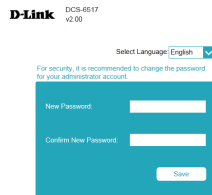


Seleccione la cámara y haga clic en **Vincular** para acceder a la configuración web.



El asistente de configuración abrirá automáticamente el explorador web en la dirección IP de la cámara.

La primera vez que se conecte a la cámara, se le pedirá que defina una contraseña para la cuenta de administrador. Después de introducir una contraseña, haga clic en **Guardar**.



Se abrirá la página de vídeo en directo de la cámara, donde podrá controlar y configurar la misma. Para obtener información adicional acerca de la configuración web, consulte el manual de usuario, disponible en el sitio web de D-Link.



Información adicional

Existe ayuda e información del producto adicional en línea en <http://www.dlink.com/>.

Información acerca de la garantía

Visite <http://warranty.dlink.com/> para obtener información sobre la garantía en su región.

Guida di installazione rapida

In questa guida di installazione sono riportate le istruzioni di base per installare DCS-6517. Per ulteriori informazioni sull'utilizzo della videocamera, consultare il manuale utente disponibile sul CD incluso nella confezione o scaricabile dal sito Web di supporto di D-Link.

Contenuto della confezione

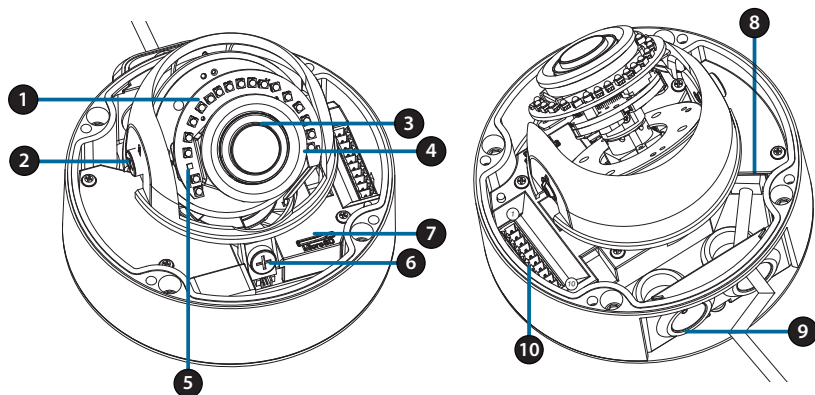
- DCS-6517 Videocamera di rete a cupola da esterni H.265 da 5 Megapixel
- Cavo Ethernet
- Adattatore prolunga
- Piastra di montaggio e viti
- Parasole
- Copertura laterale
- Adesivo per l'allineamento
- Manuale e software su CD-ROM
- Guida di installazione rapida

Se uno o più degli articoli sopra elencati risultano mancanti, rivolgersi al rivenditore.

Nota relativa alla sicurezza:

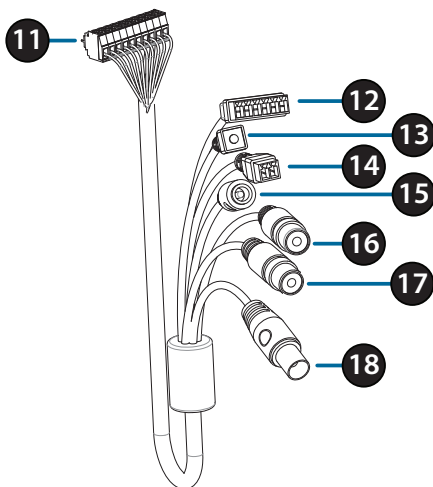
Per evitare di invalidare la garanzia, l'installazione e le riparazioni devono essere effettuate da tecnici qualificati in conformità delle normative locali.

Panoramica hardware



1	LED IR	Provvedono all'illuminazione in ambienti bui.								
2	Vite di blocco inclinazione	Può essere allentata per regolare l'angolo di inclinazione della videocamera								
3	Obiettivo della videocamera	Obiettivo videocamera per filmare l'area circostante.								
4	LED di alimentazione/stato	Indica lo stato corrente della videocamera.								
5	Sensore di luce	Misura le condizioni di illuminazione e cambia la modalità da diurna a notturna a seconda delle esigenze.								
6	Vite di blocco orizzontale	Può essere allentata per regolare la rotazione orizzontale della videocamera								
7	Slot per scheda microSD	Accetta una scheda microSD per l'archiviazione onboard di istantanee e video.								
8	Spinotto Ethernet	Collegabile a una porta Ethernet RJ45. Può essere usata con PoE per alimentare la videocamera.								
9	Canali dei cavi	Consente l'uscita dei cavi dal retro o dalla parte posteriore.								
10	Porta cablaggio	Si collega all'harness cavo opzionale (non incluso).								
		<table border="0"> <tbody> <tr> <td>1. IN 12V</td> <td>6. USC 12V</td> </tr> <tr> <td>2. GND</td> <td>7. GND</td> </tr> <tr> <td>3. IN AUD</td> <td>8. REIMPOSTA</td> </tr> <tr> <td>4. GND AUD</td> <td>9. DI</td> </tr> <tr> <td>5. USC AUD</td> <td>10. DO</td> </tr> </tbody> </table>	1. IN 12V	6. USC 12V	2. GND	7. GND	3. IN AUD	8. REIMPOSTA	4. GND AUD	9. DI
1. IN 12V	6. USC 12V									
2. GND	7. GND									
3. IN AUD	8. REIMPOSTA									
4. GND AUD	9. DI									
5. USC AUD	10. DO									

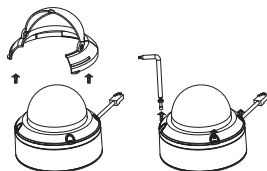
Cavi opzionali (non inclusi)



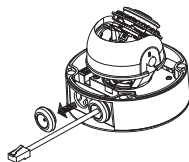
11	Connettore cablaggio	Connessione a DCS-6517. Per ulteriori dettagli sulla connessione del cavo AV, consultare il Manuale utente.
12	Connettore DI/DO	Connettori I/O per dispositivi esterni. (uscita CC 12 V non supportata per DCS-6517)
13	Pulsante di reset	Tenerlo premuto il pulsante per 10 secondi per ripristinare le impostazioni predefinite della telecamera
14	Connettore di alimentazione 24V	Non supportato per DCS-6517.
15	Connettore di alimentazione	Connettore di alimentazione per un adattatore di potenza CC 12 V (non incluso).
16	Uscita audio (verde)	Per il collegamento a un altoparlante.
17	Ingresso audio (rosso)	Per il collegamento a un microfono.
18	Connettore BNC	Non supportato per DCS-6517.

Connessione al cablaggio opzionale

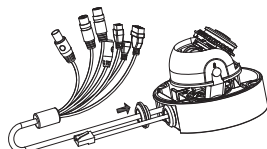
Rimuovere il parasole sollevandolo dalla videocamera. Usare la chiave di sicurezza inclusa per rimuovere le 4 viti dalla parte superiore della videocamera; quindi rimuovere il coperchio.



Rimuovere la presa impermeabile dal lato o la base della videocamera, a seconda della posizione dell'uscita dei cavi.



Spingere il connettore della videocamera e il cavo attraverso il foro e inserire la presa impermeabile del cavo.

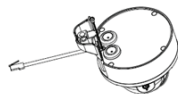


Verificare che la presa sia inserita correttamente per garantire una buona tenuta.

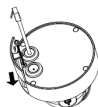
Per l'uscita cavo laterale:
Agganciare il coperchio laterale tramite le viti fornite.



Fare scorrere il coperchio sulle porte del cavo.

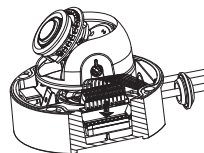


Per l'uscita cavo inferiore:
Agganciare il coperchio laterale protettivo tramite le viti fornite.



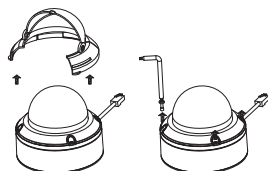
Collegare il connettore alla videocamera.

Riagganciare il coperchio della videocamera utilizzando la chiave di sicurezza per fissare le 3 viti; quindi riagganciare il parasole.

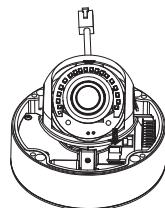


Installazione della scheda microSD

Rimuovere il parasole sollevandolo dalla videocamera. Usare la chiave di sicurezza inclusa per rimuovere le 4 viti dalla parte superiore della videocamera; quindi rimuovere il coperchio.



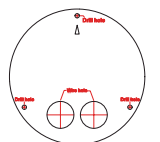
Inserire la scheda microSD con i contatti dorati rivolti verso l'esterno della videocamera. Per espellere la scheda microSD, spingerla nell'alloggiamento.



Riagganciare il coperchio della videocamera utilizzando la chiave di sicurezza per fissare le 4 viti; quindi riagganciare il parasole.

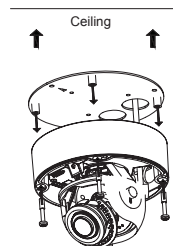
Montaggio a soffitto della videocamera

Individuare posizione adatta sul soffitto in grado di sostenere il peso della videocamera. Applicare l'adesivo per l'allineamento al soffitto o alla parete.



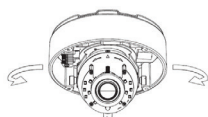
Allineare la piastra di montaggio ai fori effettuati sulla superficie del soffitto; quindi avvitare.

Allineare la videocamera alla piastra di montaggio e avvitare fermamente il corpo alla piastra

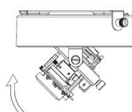


Regolazione dell'obiettivo della camera

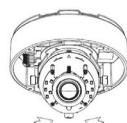
Regolare il bilanciamento dell'obiettivo della camera. Ruotare il modulo dell'obiettivo a sinistra e a destra, su e giù e l'orientamento fino a raggiungere la posizione desiderata. Al termine, fissare la panoramica, l'inclinazione e la vite di regolazione.



Panoramica 375°



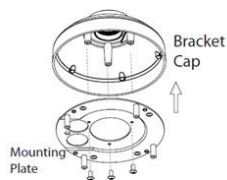
Inclinazione 90°



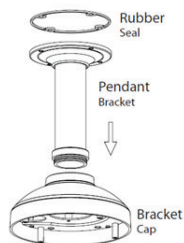
Rotazione 90°

Installazione su supporto sospeso (opzionale)

Agganciare la piastra di montaggio sulla testa della staffa utilizzando le 3 viti incluse.



Trovare una posizione adatta sul soffitto per effettuare un foro da 34 mm (+2 / -0 mm). Usare lo schema incluso per segnare ed effettuare i fori di montaggio.



Trovare una posizione adatta sul soffitto per effettuare un foro da 34 mm (+2 / -0 mm). Usare lo schema incluso per segnare ed effettuare il foro per il cablaggio.

Praticare quattro fori da 6mm in corrispondenza dei fori nello schema di montaggio e inserire al loro interno i tasselli in plastica.

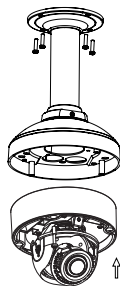
Posizionare la guarnizione in gonna tra il supporto sospeso e il soffitto, per garantire una tenuta impermeabile tra il soffitto e la staffa.

Fissare il supporto sospeso al soffitto utilizzando le viti fornite.

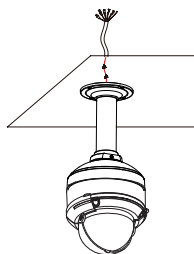
Fissare il tappo della staffa alla base del supporto di montaggio facendo ruotare il tappo in senso antiorario per fissarlo in posizione.

Inserire le vite nella base del supporto sospeso, sopra il tappo della staffa, per fissare il tappo in posizione.

Inserire un cavo Ethernet e il cavo di alimentazione attraverso il supporto sospeso.



Posizionare il corpo della videocamera sul tappo della staffa e fissare la cupola sulla base della videocamera utilizzando le 4 viti lunghe e la vite di sicurezza.

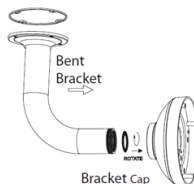
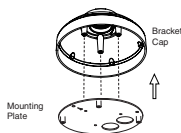


Installazione su staffa ad angolo retto (opzionale)

Agganciare la piastra di montaggio sul tappo della staffa utilizzando le 3 viti incluse.

Trovare una posizione adatta sul soffitto per effettuare un foro da 34 mm (+2 / -0 mm). Usare lo schema incluso per segnare ed effettuare i fori di montaggi.

Praticare quattro fori da 6mm in corrispondenza dei fori nello schema di montaggio e inserire al loro interno i tasselli in plastica.



Posizionare la guarnizione in gonna tra la staffa ad angolo retto e il soffitto, per garantire una tenuta impermeabile tra il soffitto e la staffa.

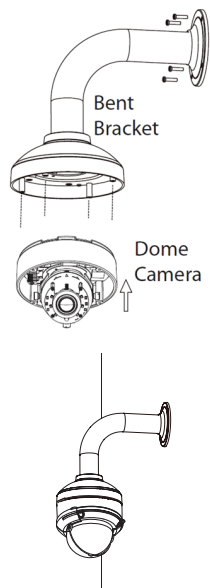
Fissare la staffa ad angolo retto al soffitto utilizzando le viti fornite.

Fissare il tappo della staffa alla base della staffa ad angolo retto facendo ruotare il tappo in senso antiorario per fissarlo in posizione.

Inserire la vite nella base della staffa ad angolo retto, sopra il tappo della staffa, per fissare il tappo in posizione.

Inserire un cavo Ethernet e il cavo di alimentazione attraverso il supporto sospeso.

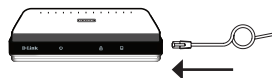
Posizionare il corpo della videocamera sul tappo della staffa e fissare la cupola sulla base della videocamera utilizzando le 3 viti lunghe e la vite di sicurezza.



Collegamento della videocamera

Collegamento con switch PoE

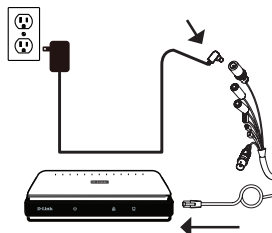
- Collegare il cavo Ethernet allo switch PoE o all'iniettore. Il cavo Ethernet fornirà alla videocamera sia alimentazione che connessione alla rete.



Se sono presenti cablaggi opzionali, è possibile usare anche il seguente metodo di collegamento:

Collegamento generico con adattatore di alimentazione a 12 V CC (non incluso)

- Collegamento del cavo Ethernet alla rete.
- Collegare l'adattatore di rete al connettore di alimentazione della videocamera, quindi inserire l'adattatore di alimentazione.



Configurazione della videocamera

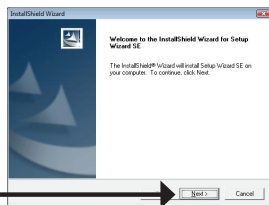
Inserire il CD del dispositivo DCS-6517 nell'unità CD-ROM per avviare l'installazione. Se la funzione di Autorun sul computer è disabilitata, o se il D-Link Launcher non si avvia automaticamente, eseguire **D:\autorun.exe** (dove D: rappresenta la lettera dell'unità CD-ROM), quindi premere Invio.

Fare clic su **Setup Wizard** (Installazione guidata) per avviare l'installazione.

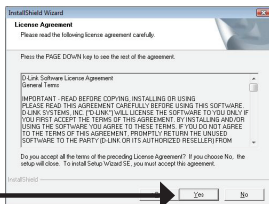


Dopo aver fatto clic sul comando dell'installazione guidata, verrà aperta la seguente finestra.

Fare clic su **Avanti** per continuare.

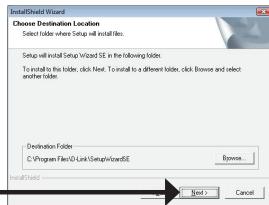


Fare clic su **Yes (Sì)** per accettare il contratto di licenza.

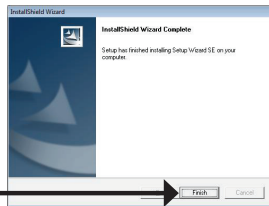


Per avviare il processo di installazione, fare clic su **Next** (Avanti).

Nota: il completamento dell'installazione può richiedere alcuni minuti.

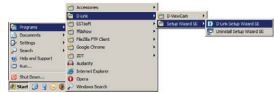


Fare clic su **Finish** (Fine) per completare l'installazione.



Visualizzazione della videocamera tramite il browser Web

Fare clic sull'icona **D-Link Setup Wizard SE** creata nel menu Start di Windows (**Start > D-Link > Setup Wizard SE**).



Selezionare la videocamera e fare clic su **Link** (Collegamento) per accedere alla configurazione Web.



La procedura guidata di configurazione apre automaticamente il browser Web all'indirizzo IP della telecamera.

Quando si esegue la prima connessione alla videocamera, viene richiesto di impostare una password per l'account amministratore. Dopo avere inserito una password, fare clic su **Salva**.



Verrà aperta la pagina del video live della videocamera, quindi sarà possibile controllare e configurare la videocamera. Per ulteriori informazioni sulla configurazione Web, fare riferimento al manuale utente disponibile sul sito Web di D-Link.



Ulteriori informazioni

Ulteriore assistenza e maggiori informazioni sul prodotto sono reperibili online presso <http://www.dlink.com/>

Termini di garanzia

Per informazioni sulla garanzia nel proprio paese, visitare il sito <http://warranty.dlink.com/>.

Краткое руководство по установке

Данное руководство содержит основные инструкции по установке камеры DCS-6517 в сети. Для получения дополнительной информации по настройке всех функций камеры обратитесь к руководству пользователя на входящем в комплект поставки компакт-диске или доступному на Web-сайте D-Link.

Комплект поставки

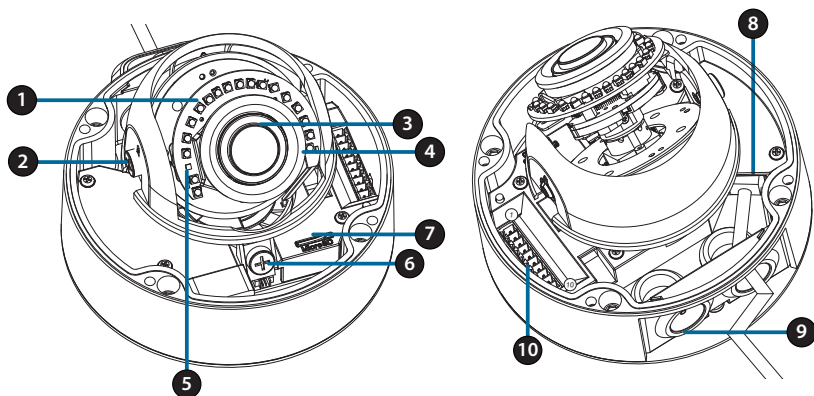
- Сетевая камера DCS-6517 5 Мп внешняя купольная антивандальная сетевая камера с поддержкой PoE
- Ethernet-кабель
- Соединитель Ethernet-кабеля
- Нижняя панель основания камеры, набор для монтажа
- Солнцезащитный козырек
- Боковая панель
- Направляющий стикер
- CD-диск с руководством пользователя и программным обеспечением
- Краткое руководство по установке

Если что-либо из перечисленного отсутствует, обратитесь к Вашему поставщику.

Меры безопасности:

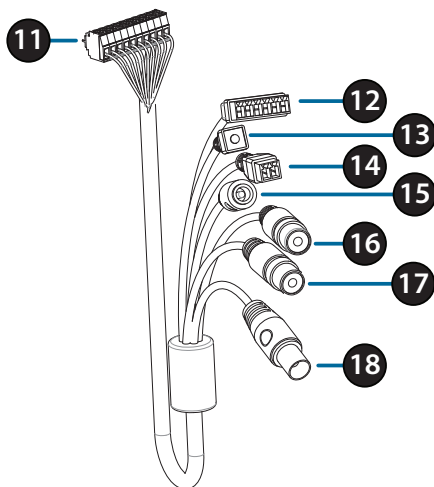
Во избежание прекращения гарантии, установку и обслуживание должны проводить сертифицированные специалисты в соответствии с региональными нормами и правилами.

Обзор аппаратной части



1	Инфракрасные диоды	Используются для работы камеры в ночное время.								
2	Винт модуля наклона	Позволяет регулировать угол наклона камеры.								
3	Объектив камеры	Объектив с настраиваемым фокусным расстоянием.								
4	Индикатор питания/состояния	Показывает текущее состояние камеры.								
5	Светочувствительный датчик	Используется для определения условий освещения.								
6	Винт модуля поворота	Позволяет регулировать угол поворота камеры в горизонтальной плоскости.								
7	Слот для карты microSD	Позволяет установить карту microSD для записи на нее видео и снапшотов.								
8	Ethernet-разъем	Разъем RJ-45 для подключения Ethernet-кабеля, а также для подачи питания на камеру по технологии Power over Ethernet (PoE).								
9	Каналы для кабелей	Позволяют вывести кабели сбоку или сзади камеры.								
10	Разъем для жгута проводов	Подключение дополнительного жгута проводов (не входит в комплект поставки).								
		<table border="0"> <tbody> <tr> <td>1. 12V IN</td> <td>6. 12V OUT</td> </tr> <tr> <td>2. GND</td> <td>7. GND</td> </tr> <tr> <td>3. AUD IN</td> <td>8. RESET</td> </tr> <tr> <td>4. AUD GND</td> <td>9. DI</td> </tr> <tr> <td>5. AUD OUT</td> <td>10. DO</td> </tr> </tbody> </table>	1. 12V IN	6. 12V OUT	2. GND	7. GND	3. AUD IN	8. RESET	4. AUD GND	9. DI
1. 12V IN	6. 12V OUT									
2. GND	7. GND									
3. AUD IN	8. RESET									
4. AUD GND	9. DI									
5. AUD OUT	10. DO									

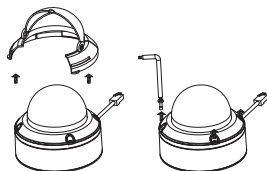
Дополнительный жгут проводов (не входит в комплект поставки)



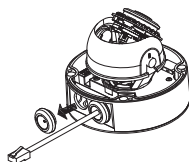
11	Коннектор для подключения к камере	Используется для подключения к DCS-6517. Для получения дополнительной информации о подключении кабеля AV обратитесь к руководству пользователя.
12	Разъемы DI/DO	Разъемы для подключения внешних устройств. (Выход 12 В постоянного тока не поддерживается для DCS-6517)
13	Кнопка Reset	Нажмите и удерживайте кнопку Reset в течение 10 секунд для сброса настроек камеры к заводским.
14	Разъем питания 24 В	Не поддерживается для DCS-6517.
15	Разъем питания	Используется для подключения адаптера питания постоянного тока 12 В (не входит в комплект поставки).
16	Аудиовыход (Зеленый)	Используется для подключения динамиков.
17	Аудиовход (Красный)	Используется для подключения микрофона.
18	BNC	Не поддерживается для DCS-6517.

Подключение дополнительного жгута проводов

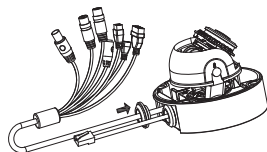
Снимите с камеры солнцезащитный козырек, подняв его вверх. Используйте входящий в комплект поставки ключ, чтобы выкрутить 4 винта сверху камеры, а затем снимите купол камеры.



Снимите водонепроницаемую заглушку сбоку или снизу камеры в зависимости от того, как будут выведены кабели.



Протяните кабель с разъемом для подключения к камере через отверстие и установите водонепроницаемую заглушку.



Убедитесь, что водонепроницаемая заглушка надежно зафиксирована.

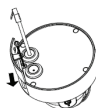
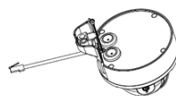
Для вывода кабеля сбоку:

Расположите боковую панель поверх каналов для кабелей и прикрепите ее с помощью входящих в комплект поставки винтов.



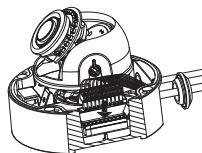
Для вывода кабеля снизу:

Расположите защитную панель поверх каналов для кабелей и прикрепите ее с помощью входящих в комплект поставки винтов.



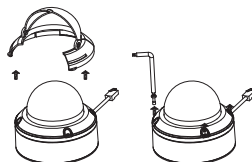
Подключите соответствующий разъем жгута проводов к камере.

Прикрепите купол камеры, затянув ключом 4 винта, и установите солнцезащитный козырек.

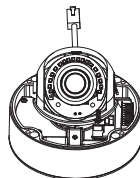


Установка карты microSD

Снимите с камеры солнцезащитный козырек, подняв его вверх. Используйте входящий в комплект поставки ключ, чтобы выкрутить 4 винта сверху камеры, а затем снимите купол камеры.



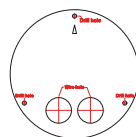
Установите карту microSD в слот контактами вниз. Чтобы извлечь установленную в слот карту microSD, нажмите на нее.



Прикрепите купол камеры, затянув ключом 4 винта, и установите солнцезащитный козырек.

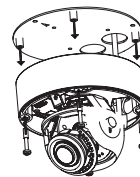
Установка камеры на потолке

Выберите подходящее место на потолке, способное выдержать вес камеры. Прикрепите направляющий стикер к потолку и просверлите отверстия в местах, отмеченных на стикере. Вставьте анкеры в просверленные отверстия.



↑ Потолок ↑

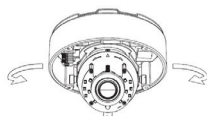
Совместите нижнюю панель основания камеры с просверленными отверстиями на потолке и вставьте винты в анкеры. Вкрутите винты отверткой.



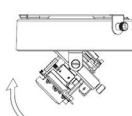
Совместите камеру с ее нижней панелью и надежно прикрутите винтами камеру к этой панели.

Регулировка объектива камеры

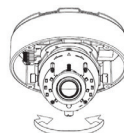
Отрегулируйте положение объектива камеры по трем осям. Поворачивайте объектив влево и вправо, вверх и вниз, чтобы установить его в требуемом положении. Закрепите винты соответствующих модулей.



Вращение 375°



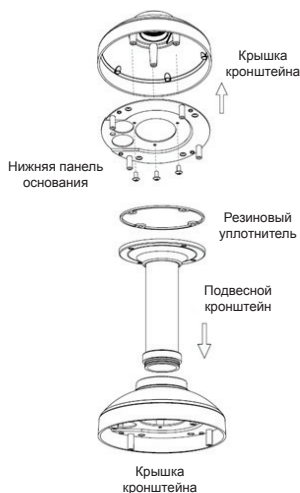
Наклон 90°



Поворот 90°

Установка подвесного кронштейна (опционально)

Прикрепите нижнюю панель основания камеры к крышке кронштейна с помощью четырех входящих в комплект поставки винтов.



Выберите подходящее место на потолке для того, чтобы просверлить отверстие диаметром 34 мм (+2 / -0 мм). Используйте входящий в комплект поставки шаблон, чтобы разметить и вырезать монтажные отверстия.

Выберите подходящее место на потолке для того, чтобы просверлить отверстие диаметром 34 мм (+2 / -0 мм). Используйте входящий в комплект поставки шаблон, чтобы разметить и вырезать отверстие для кабелей.

Просверлите четыре отверстия диаметром 6 мм, соответствующие отверстиям на шаблоне, и вставьте в них пластмассовые анкеры.

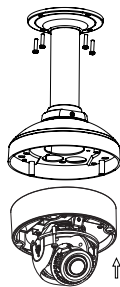
Поместите резиновый уплотнитель между подвесным кронштейном и потолком для обеспечения водонепроницаемости между потолком и кронштейном.

Прикрепите подвесной кронштейн к потолку с помощью входящих в комплект поставки винтов.

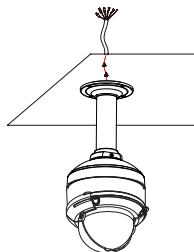
Прикрепите крышку снизу подвесного кронштейна, поворачивая ее против часовой стрелки до полной фиксации.

Вставьте винт в основание подвесного кронштейна сверху крышки, чтобы зафиксировать ее.

Протяните Ethernet-кабель и кабель питания через подвесной кронштейн.

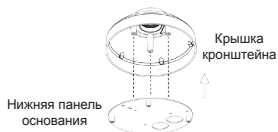


Поместите камеру на крышку кронштейна и прикрепите купол к основанию камеры с помощью четырех длинных винтов и защитного винта.



Установка настенного кронштейна (опционально)

Прикрепите нижнюю панель основания камеры к крышке кронштейна с помощью четырех входящих в комплект поставки винтов.



Выберите подходящее место на потолке для того, чтобы просверлить отверстие диаметром 34 мм (+2 / -0 мм). Используйте входящий в комплект поставки шаблон, чтобы разметить и вырезать монтажные отверстия.

Просверлите четыре отверстия диаметром 6 мм, соответствующие отверстиям на шаблоне, и вставьте в них пластмассовые анкеры.



Поместите резиновый уплотнитель между настенным кронштейном и потолком для обеспечения водонепроницаемости между потолком и кронштейном.

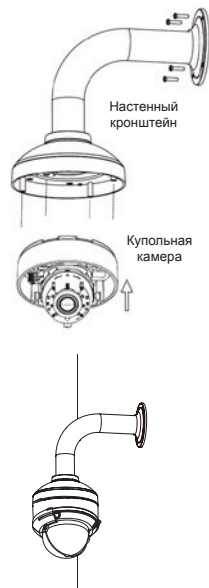
Прикрепите настенный кронштейн к потолку с помощью входящих в комплект поставки винтов.

Прикрепите крышку снизу настенного кронштейна, поворачивая ее против часовой стрелки до полной фиксации.

Вставьте винт в основание настенного кронштейна сверху крышки, чтобы зафиксировать ее.

Протяните Ethernet-кабель и кабель питания через настенный кронштейн.

Поместите камеру на крышку кронштейна и прикрепите купол к основанию камеры с помощью четырех длинных винтов и защитного винта.



Подключение камеры

Подключение с помощью PoE-коммутатора

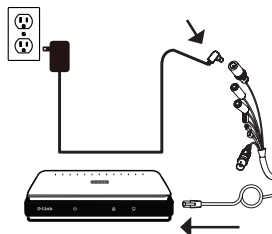
- Подключите камеру к PoE-коммутатору или инжектору с помощью Ethernet-кабеля. Данные и питание будут передаваться по одному кабелю.



При наличии дополнительного жгута проводов можно воспользоваться следующим способом подключения:

Подключение с помощью адаптера питания постоянного тока 12 В (не входит в комплект поставки)

- Подключите камеру к коммутатору или маршрутизатору с помощью Ethernet-кабеля.
- Подключите кабель питания от камеры к адаптеру. Затем подключите адаптер питания к электрической розетке.



Настройка камеры

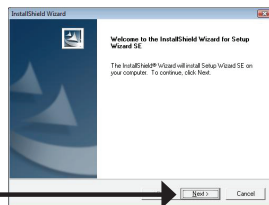
Вставьте компакт-диск для DCS-6517 в привод CD-ROM, чтобы начать установку. Если функция автозапуска на компьютере выключена, или D-Link Launcher не запускается автоматически, нажмите **Пуск > Выполнить**. Введите **D:\autorun.exe**, где D: - имя привода CD-ROM, и нажмите Enter.

Нажмите **Setup Wizard** (Мастер установки). →

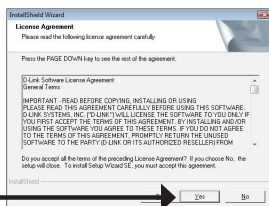


После запуска Мастера установки появится следующее окно.

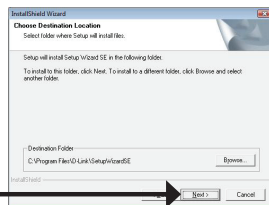
Нажмите **Next** (Далее) для продолжения. →



Нажмите **Yes** (Да), чтобы принять лицензионное соглашение. →

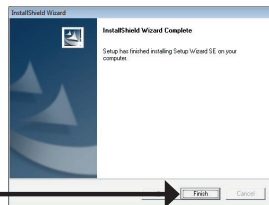


Нажмите **Next** (Далее), чтобы начать процесс установки →



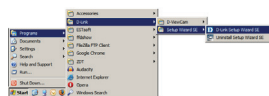
Примечание: Установка может занять несколько минут.

Нажмите **Finish** (Завершить), чтобы завершить установку. →

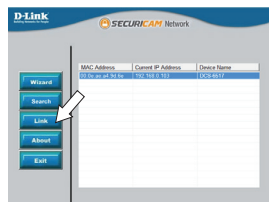


Просмотр изображения камеры через Web-браузер

Нажмите на значок **D-Link Setup Wizard SE** в стартовом меню Windows (**Пуск > D-Link > Setup Wizard SE**).



Выберите камеру и нажмите **Link** (Подключение) для доступа к сетевым настройкам.



Мастер установки автоматически откроет Web-браузер по IP-адресу камеры.

При первом подключении к камере необходимо установить пароль для учетной записи администратора. Введите пароль и нажмите **Save** (Сохранить).



В данном разделе доступен просмотр видео с камеры в реальном времени. Для получения дополнительной информации по настройке всех функций камеры обратитесь к руководству пользователя на входящем в комплект поставки компакт-диске или доступному на Web-сайте D-Link.



Технические характеристики

Технические характеристики		
Аппаратное обеспечение		
Интерфейсы	<ul style="list-style-type: none"> • Порт 10/100 Base-TX с поддержкой PoE • DI/DO 	<ul style="list-style-type: none"> • Слот для карты microSD • Аудио вход/выход
Индикаторы	<ul style="list-style-type: none"> • Питания/состояния 	
Корпус	<ul style="list-style-type: none"> • Всепогодный корпус (стандарт IP67) 	<ul style="list-style-type: none"> • Антивандальный корпус (стандарт IK10)
Параметры камеры		
Основные характеристики	<ul style="list-style-type: none"> • 1/2,9-дюймовый двухмегапиксельный CMOS-сенсор с технологией прогрессивного сканирования • Моторизованный вариофокальный объектив с фокусным расстоянием 2,8 ~ 12 мм • Апертура: F1.4 • Минимальное расстояние до объекта: 500 мм (ширина 3 мм) • Углы обзора (16:9): <ul style="list-style-type: none"> - 75°~24° (по горизонтали) - 55°~18° (по вертикали) - 96°~30° (по диагонали) • 10-кратное цифровое увеличение 	<ul style="list-style-type: none"> • Минимальное освещение: <ul style="list-style-type: none"> - Цветной режим: 0,01 люкс / F1.4 - Черно-белый режим: 0,008 люкс / F1.4 - Черно-белый режим с инфракрасной подсветкой: 0 люкс / F1.4 • Расстояние инфракрасной подсветки: 20 м • Встроенный ICR-фильтр • Углы регулировки (немоторизованные): <ul style="list-style-type: none"> По вертикали: 90° По горизонтали: 375° По вращение: 90°
Характеристики изображения	<ul style="list-style-type: none"> • Настройка качества и размера изображения, скорости передачи кадров и скорости передачи данных • Метки времени и вставки текста • Настраиваемые окна для обнаружения движения 	<ul style="list-style-type: none"> • Настраиваемые зоны приватных масок • Настройка скорости затвора, яркости, насыщенности цвета, контраста, резкости, увеличения, фокуса и апертуры
Сжатие видео	<ul style="list-style-type: none"> • Сжатие видео в формате H.265/H.264/MJPEG • H.265/H.264 multicast-вещание 	<ul style="list-style-type: none"> • Сжатие в формате JPEG для стоп-кадров
Разрешение видео	<ul style="list-style-type: none"> • 16:9 – 1920 x 1080, 1280 x 720, 960 x 560, 640 x 360, 320 x 176 до 30 кадров/с 	<ul style="list-style-type: none"> • 4:3 – 2592 x 1944, 1280 x 960, 1024 x 768, 800 x 600, 640 x 480, 480 x 360, 320 x 240 до 30 кадров/с
Аудио	<ul style="list-style-type: none"> • G.711 	<ul style="list-style-type: none"> • AAC
Сеть		
Сетевые протоколы	<ul style="list-style-type: none"> • IPv6 • IPv4 • TCP/IP • UDP • ICMP • DHCP-клиент • NTP-клиент (D-Link) • DNS-клиент • DDNS-клиент (D-Link) • SMTP-клиент • FTP-клиент • HTTP/HTTPS 	<ul style="list-style-type: none"> • Samba-клиент • PPPoE • UPnP port forwarding • RTP/RTSP/RTCP • Фильтрация IP-адресов • QoS • CoS • Multicast • Bonjour • 802.1x • SNMP • Соответствие ONVIF
Безопасность	<ul style="list-style-type: none"> • Защита учетной записи администратора и группы пользователей • Аутентификация по паролю 	<ul style="list-style-type: none"> • Аутентификация HTTP и RTSP

Управление		
Управление событиями	<ul style="list-style-type: none"> Обнаружение движения Уведомление о событии и загрузка стоп-кадров/видеоклипов на электронную почту или FTP-сервер 	<ul style="list-style-type: none"> Поддержка нескольких серверов SMTP и FTP Несколько уведомлений о событии Несколько способов записи для создания резервных копий
Удаленное управление	<ul style="list-style-type: none"> Создание стоп-кадров/видеоклипов и сохранение на локальный жесткий диск 	<ul style="list-style-type: none"> Интерфейс настройки, доступный через Web-браузер
Дополнительное ПО D-ViewCam™	<ul style="list-style-type: none"> Удаленное управление/контроль: до 32 камер Просмотр изображений на одном экране: до 32 камер 	<ul style="list-style-type: none"> Поддержка всех функций управления, доступных через Web-интерфейс Опции записи по срабатыванию датчика, по расписанию или вручную
Системные требования		
Системные требования для Web-интерфейса	<ul style="list-style-type: none"> Операционная система: Microsoft Windows 10/8/7 Web-браузер: Internet Explorer, Firefox или, Chrome 	
Системные требования для ПО D-ViewCam™	<ul style="list-style-type: none"> Операционная система: 32 bits: Windows 8/7 (SP1) 64 bits: Windows 10/8/7 (SP1)/Server 2012/Server 2008 R2 Web-браузер: Internet Explorer 7 или выше Протокол: Стандартный TCP/IP 	
Физические параметры		
Вес	<ul style="list-style-type: none"> 865 г 950 г (с солнцезащитным козырьком) 	
Размеры (Д x Ш x В)	<ul style="list-style-type: none"> Диаметр: 134 мм Высота: 116 мм 	
Условия эксплуатации		
Питание	<ul style="list-style-type: none"> Внешний адаптер питания: Вход: от 100 до 240 В переменного тока, 50/60 Гц Выход: 12 В, 1,5 А Питание по кабелю Ethernet (PoE) 802.3af (Класс 3) 	
Потребляемая мощность	<ul style="list-style-type: none"> 10 Вт ± 5% 	
Температура	<ul style="list-style-type: none"> Рабочая: от -40 до 50 °C Хранения: от -20 до 70 °C 	
Влажность	<ul style="list-style-type: none"> При эксплуатации: от 20% до 80% (без конденсата) При хранении: от 5% до 95% (без конденсата) 	
Прочее		
Сертификаты	<ul style="list-style-type: none"> CE CE LVD 	<ul style="list-style-type: none"> FCC C-Tick

Правила и условия безопасной эксплуатации

Перед установкой и подключением устройства ознакомьтесь с кратким руководством по установке. Убедитесь, что устройство, адаптер питания* и кабели не имеют механических повреждений. Устройство должно быть использовано только по

назначению, в соответствии с кратким руководством по установке.

Не устанавливайте устройство в зонах с влажностью и уровнем загрязнения воздуха свыше 80%; а также в области повышенного испарения и парообразования или усиленной вибрации.

Не используйте устройство с поврежденным корпусом. Температура окружающей среды в непосредственной близости от устройства и внутри его корпуса должна соответствовать указанной в технических характеристиках устройства.

Во избежание повреждения матрицы не направляйте объектив видеокамеры на очень яркие объекты и солнце.

Не включайте адаптер питания*, если его корпус или кабель повреждены. Подключайте адаптер питания* только к исправным розеткам с параметрами, указанными на адаптере питания*.

Не вскрывайте корпус устройства! Перед очисткой камеры от загрязнений и пыли отключите питание устройства. Удаляйте пыль с помощью влажной салфетки. Не используйте жидкие/аэрозольные очистители или магнитные/статические устройства для очистки. Избегайте попадания влаги в устройство и адаптер питания*.

Срок службы устройства – 2 года.

Гарантийный период исчисляется с момента приобретения устройства у официального дилера на территории России и стран СНГ и составляет один год.

Вне зависимости от даты продажи гарантийный срок не может превышать 2 года с даты производства изделия, которая определяется по 6 (год) и 7 (месяц) цифрам серийного номера, указанного на наклейке с техническими данными.

Год: 9 - 2009, А - 2010, В - 2011, С - 2012, D - 2013, Е - 2014, F - 2015, G - 2016, H - 2017.

Месяц: 1 - январь, 2 - февраль, ..., 9 - сентябрь, А - октябрь, В - ноябрь, С - декабрь.

* Комплект поставки может отличаться в зависимости от региона.

ТЕХНИЧЕСКАЯ ПОДДЕРЖКА

Обновления программного обеспечения и документация доступны на Интернет-сайте D-Link. D-Link предоставляет бесплатную поддержку для клиентов в течение гарантийного срока. Клиенты могут обратиться в группу технической поддержки D-Link по телефону или через Интернет.

Техническая поддержка компании D-Link работает в круглосуточном режиме ежедневно, кроме официальных праздничных дней. Звонок бесплатный по всей России.

Техническая поддержка D-Link:

8-800-700-5465

Техническая поддержка через Интернет:

<http://www.dlink.ru>

e-mail: support@dlink.ru

Изготовитель:

Д-Линк Корпорейшн, 114, Тайвань, Тайпей, Нэйху Дистрикт, Шинху 3-Роуд, № 289

Уполномоченный представитель, импортер:

ООО "Д-Линк Трейд"

390043, г. Рязань, пр. Шабулина, д.16

Тел.: +7 (4912) 503-505

ОФИСЫ

Россия

Москва, Графский переулок, 14

Тел. : +7 (495) 744-00-99

E-mail: mail@dlink.ru

Україна

Київ, вул. Межигірська, 87-А

Тел.: +38 (044) 545-64-40

E-mail: ua@dlink.ua

Moldova

Chisinau; str.C.Negruzzi-8

Tel: +373 (22) 80-81-07

E-mail:info@dlink.md

Беларусь

Мінск, пр-т Незалежнасці, 169

Тэл.: +375 (17) 218-13-65

E-mail: support@dlink.by

Қазақстан

Алматы, Құрманғазы к-сі,143 үй

Тел.: +7 (727) 378-55-90

E-mail: almaty@dlink.ru

Հայաստան

Երևան, Դավթաշեն 3-րդ

թաղամաս, 23/5

Հեռ. +374 (10) 39-86-67

Էլ. փոստ՝ info@dlink.am

Latvija

Rīga, Lielirbes iela 27

Tel.: +371 (6) 761-87-03

E-mail: info@dlink.lv

Lietuva

Vilnius, Žirmūnų 139-303

Tel.: +370 (5) 236-36-29

E-mail: info@dlink.lt

Eesti

E-mail: info@dlink.ee

Türkiye

Uphill Towers Residence A/99

Ataşehir /ISTANBUL

Tel: +90 (216) 492-99-99

Email: info.tr@dlink.com.tr

ישראל

רח' המשימים 20

קרית מסלון

פתח תקווה

972 (3) 921-28-86

support@dlink.co.il

EAC

Guia de instalação rápida

Este guia de instalação fornece instruções básicas para a instalação do DCS-6517. Para obter informações adicionais sobre como usar a câmera, consulte o Manual do Usuário que está disponível no CD incluso neste pacote ou no site de suporte da D-Link.

Conteúdos do pacote

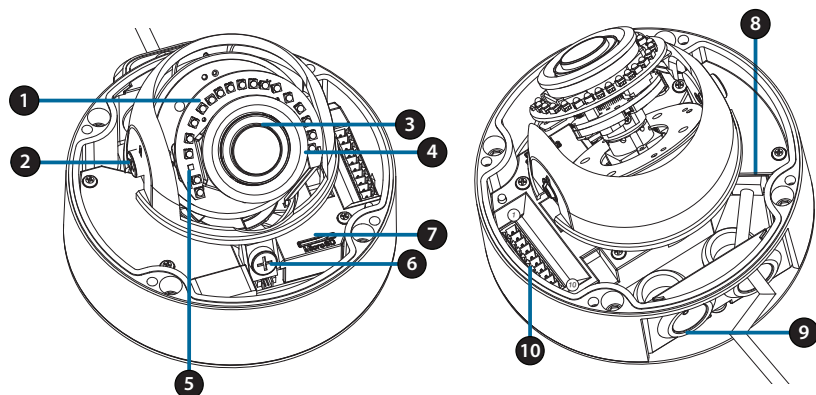
- DCS-6517 Câmera de Segurança Dome IP 5 Megapixel H.265 Externa
- Cabo Ethernet
- Adaptador de Extensão
- Placa de montagem e parafusos
- Protetor contra aquecimento
- Tampa lateral
- Alinhamento Autocolante
- Manual e Software em CD-ROM
- Guia de Instalação Rápida

Se algum dos itens acima estiver faltando, entre em contato com seu revendedor.

Aviso de segurança:

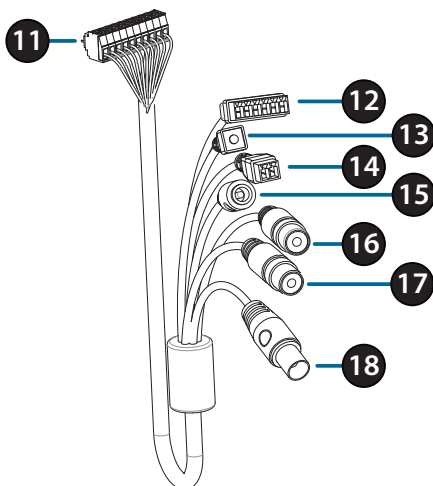
A instalação e manutenção devem ser efetuadas por técnicos certificados, cumprindo assim todos os códigos locais e impedindo a anulação da garantia.

Visão Geral do Hardware



1	IR LEDs	Fornecer iluminação para ambientes com pouca luz.								
2	Parafuso de bloqueio de inclinação	Pode ser solto para ajustar o ângulo de inclinação da câmera.								
3	Lentes da câmera	Lente da câmera para gravar vídeo nas áreas de circulação.								
4	LED de Alimentação /Estado	Indica o estado atual da câmera.								
5	Sensor de luz	Mede as condições de iluminação e alterna entre o modo diurno e o modo noturno.								
6	Parafuso de bloqueio horizontal	Pode ser afrouxada para ajustar a rotação horizontal da câmera.								
7	Entrada para cartão micro SD	Aceita um cartão micro SD para armazenamento on-board de fotos e vídeo.								
8	Ethernet Jack	Conectado a uma porta Ethernet RJ45. Pode ser usado como PoE (Alimentação sem fio) para fornecer energia à câmera.								
9	Canais a Cabo	Deixe os cabos da parte externa da câmera pela traseira ou lateral.								
10	Porta multi cabos	Conecta em um conector do chicote opcional (não incluído)								
		<table border="0"> <tbody> <tr> <td>1. 12V IN</td> <td>6. 12V OUT</td> </tr> <tr> <td>2. GND</td> <td>7. GND</td> </tr> <tr> <td>3. AUD IN</td> <td>8. RESET</td> </tr> <tr> <td>4. AUD GND</td> <td>9. DI</td> </tr> <tr> <td>5. AUD OUT</td> <td>10. DO</td> </tr> </tbody> </table>	1. 12V IN	6. 12V OUT	2. GND	7. GND	3. AUD IN	8. RESET	4. AUD GND	9. DI
1. 12V IN	6. 12V OUT									
2. GND	7. GND									
3. AUD IN	8. RESET									
4. AUD GND	9. DI									
5. AUD OUT	10. DO									

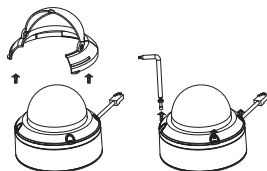
Cabo de conexões opcional (não incluso)



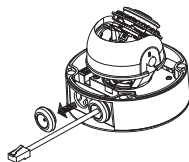
11	Conector multi Cabos	Plugue o DCS-6517. Para obter mais detalhes sobre a conexão do cabo A / V, consulte o Manual do Usuário.
12	DI/DO Conector	Conectores de E / S para dispositivos externos. (A saída de 12V DC não suporta o DCS-6517)
13	Botão de reset	Pressione e segure o botão por 10 segundos para redefinir a câmera de volta às configurações de fábrica.
14	24V Conector de alimentação	Não suportado para o DCS-6517.
15	Conector de alimentação	Conector de alimentação para um adaptador de 12V DC (não incluído).
16	Saída de áudio (verde)	Ligue a um altofalante
17	Entrada de áudio (Vermelho)	Ligue a um microfone.
18	Conector BNC	Não suportado para o DCS-6517.

Conexão opcional de multi cabos

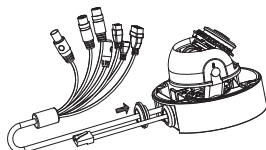
Remova o protetor contra aquecimento levantando-o. Use a chave de segurança incluída para remover os 4 parafusos da parte superior e remova a tampa da câmera.



Remova um plug de impermeabilização do lado ou na parte inferior, dependendo de como você deseja que os cabos saiam da câmera.



Empurre o conector da câmera e o cabo através do orifício e insira o impermeabilizante.



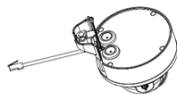
Certifique-se de que está corretamente inserida para garantir uma boa vedação.

Para saída de cabo lateral:

Fixe a tampa lateral através dos parafusos fornecidos.

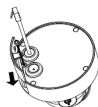


Deslize a tampa sobre as portas de cabo.



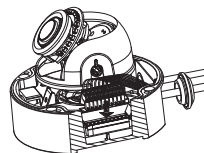
Para saída do cabo inferior:

Fixe a tampa lateral de proteção através dos parafusos fornecidos.



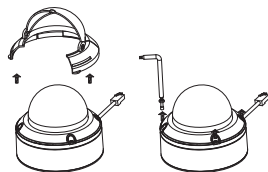
Ligue o conector da câmera.

Recoloque a tampa usando a chave de segurança para apertar os 3 parafusos e reconecte o protetor contra aquecimento.



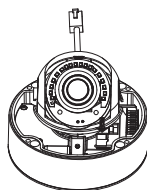
Instalação do cartão micro SD

Remova o protetor contra aquecimento fora da câmera. Use a chave de segurança incluída para remover os 4 parafusos da parte superior e remova a tampa.



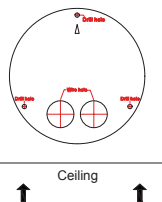
Insira o cartão microSD com os contatos dourados voltados para fora da câmera. Para ejetar o cartão, empurre para dentro.

Recoloque a tampa da câmera usando a chave de segurança para apertar os 4 parafusos e reconecte o protetor contra aquecimento.



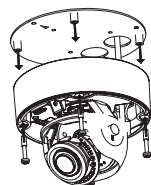
Montagem da câmera no teto

Localize uma posição adequada que seja capaz de suportar o peso da câmera. Coloque o adesivo de alinhamento no teto ou na parede.



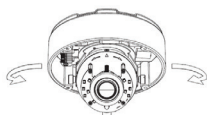
Alinhe a placa de montagem com os furos na superfície do teto e aperte os parafusos.

Alinhe a câmera à placa de montagem e parafuse o corpo da câmera para a placa firmemente.

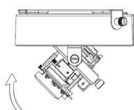


Ajustando a lente da câmera

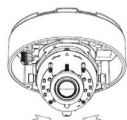
Ajuste foco da lente manualmente; Gire o módulo para a esquerda e para a direita, para cima e para baixo, até que a posição desejada seja alcançada. Aperte a tampa o parafuso de ajuste e estará concluído.



Pan 375°



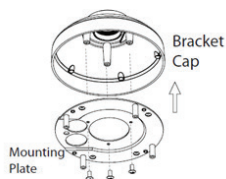
Tilt 90°



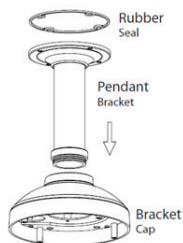
Rotação 90°

Instalando o Suporte para Pendente (Opcional)

Fixe a placa de montagem à tampa do suporte usando os três parafusos incluídos.



Localize uma posição adequada no teto para um orifício de 34 mm (+2 / -0 mm) a ser cortado. Use o modelo incluído para marcar e cortar os furos de montagem.



Localize uma posição adequada no teto para um orifício de 34 mm (+2 / -0 mm) a ser cortado. Use o modelo incluído para marcar e cortar o furo de fiação.

Perfure quatro furos de 6 mm conforme correspondentes no gabarito de montagem e insira as âncoras de plástico.

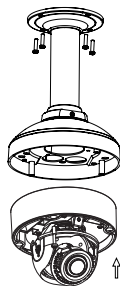
Coloque a vedação de borracha entre o suporte pendente e o teto para garantir uma vedação à prova d'água.

Fixe o suporte pendente ao teto utilizando os parafusos fornecidos.

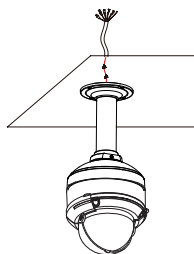
Fixe a tampa do suporte à parte inferior pendente, girando a tampa no sentido anti-horário para apertá-la no lugar.

Insira o parafuso na base do suporte e na parte superior da tampa para fixá-la.

Passar um cabo Ethernet e o cabo de alimentação através do suporte pendente.

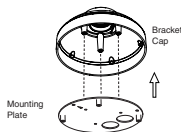


Coloque o corpo da câmera na tampa do suporte e conecte-a firmemente à base usando os 4 parafusos longos e os de segurança.



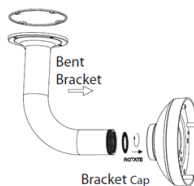
Instalação da montagem em ângulo reto (opcional)

Fixe a placa de montagem à tampa do suporte usando os três parafusos incluídos.



Localize uma posição adequada no teto para um orifício de 34 mm (+2 / -0 mm) a ser cortado. Use o modelo incluído para marcar e cortar os furos de montagem.

Perfure quatro furos de 6 mm correspondentes aos furos no gabarito de montagem e insira as âncoras de plástico nesses furos.



Coloque a vedação de borracha entre o suporte de ângulo reto e o teto, para garantir uma vedação impermeável.

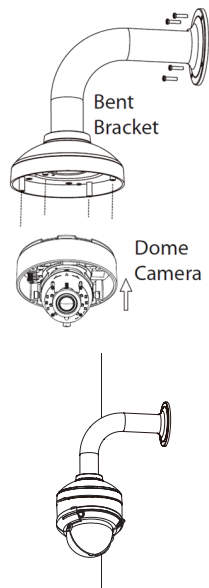
Fixe o suporte de ângulo reto ao teto usando os parafusos fornecidos.

Coloque a tampa na parte inferior do suporte de ângulo reto no sentido anti-horário para apertá-lo no lugar.

Insira o parafuso na base do suporte do ângulo direito e na parte superior da tampa.

Passo o cabo Ethernet e o de alimentação através do suporte suspenso.

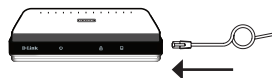
Coloque o corpo da câmera na tampa do suporte e conecte firmemente à base, usando os três parafusos longos e os de segurança.



Conexão da câmera

Conexão com um switch PoE

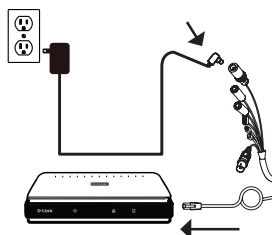
- Ligue o cabo Ethernet ao seu interruptor PoE ou injetor. O cabo Ethernet fornecerá a câmera alimentação e uma conexão de rede.



Se você tiver o feixe de cabo opcional, também pode usar o seguinte método de conexão:

Conexão Geral utilizando um Adaptador de Alimentação de 12 V CC (não incluído)

- Conecte o cabo Ethernet à rede.
- Conecte o adaptador ao conector da câmera. Em seguida, conecte o adaptador de alimentação.



Configurando a Câmera

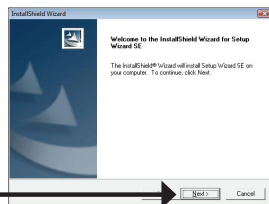
Insira o DCS-6517 na unidade de CD-ROM do computador para iniciar a instalação. Se a função Autorun no computador estiver desativada ou se o Disparador D-Link não iniciar automaticamente, execute **D: \ autorun.exe**, onde D: representa a letra da unidade de CD-ROM.

Clique em **Setup Wizard** para iniciar a instalação.

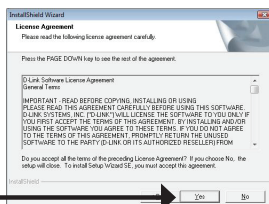


Depois de clicar no Assistente de Configuração, a seguinte janela será aberta.

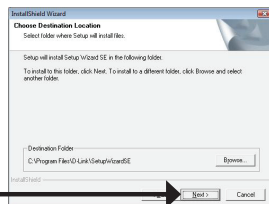
Clique em **Next** para continuar.



Clique em **Yes** para aceitar o Contrato de Licença.

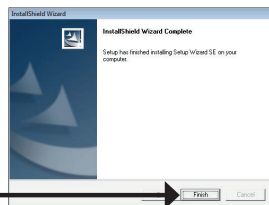


Para iniciar o processo de instalação, clique em **Next**.



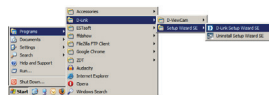
Observação: A instalação pode levar vários minutos para ser concluída.

Clique em **Finish** para concluir a instalação.



Como visualizar sua câmera por meio de um navegador da Web

clique no ícone **D-Link Setup Wizard SE** que foi criado no menu Iniciar do Windows (**Start > D-Link > Setup Wizard SE**).

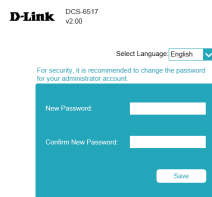


Selecione a câmera e clique em **Link** para acessar a configuração da web.

O Assistente de Configuração abrirá automaticamente o seu navegador da Web para o endereço IP da câmera.



Na primeira vez que você conectar a câmera, você será solicitado a definir uma senha para a conta de administrador. Depois de inserir uma senha, clique em **Save**.



A página de vídeo ao vivo da câmera será aberta, e você poderá agora controlar e configurar sua câmera. Para obter informações adicionais sobre a configuração da web, consulte o manual do usuário, que está disponível no site da D-Link.



informação adicional

Informações adicionais sobre produtos e ajuda estão disponíveis on-line em <http://www.dlink.com/>

Informações de garantia

Por favor visite <http://warranty.dlink.com/> para mais informações de garantia em sua região.

快速安裝手冊

本安裝指南提供安裝DCS-6517網路攝影機安裝的基本操作。若要取得更多關於此攝影機的使用方式，請參考光碟內附的使用手冊，或至D-Link技術支援網站下載產品使用手冊。

包裝內容

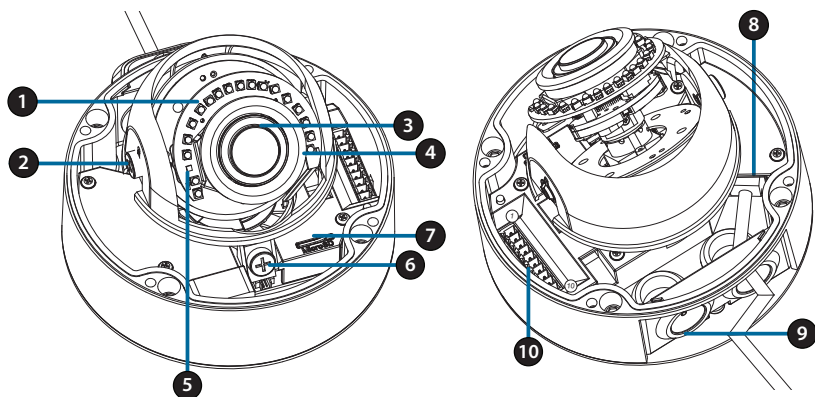
- DCS-6517 5百萬H.265 戶外半球型網路攝影機
- 乙太網路線
- RJ45母對母轉接頭
- 壁掛支架與螺絲
- 遮陽罩
- 側蓋
- 校準貼紙
- 光碟內含操作手冊與軟體
- 快速安裝手冊

若包裝內缺少以上任何項目，請聯絡您的經銷商。

安全須知：

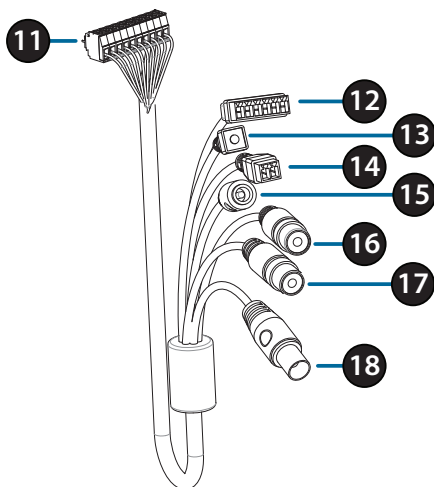
此產品應該由具備相關證照的技術人員安裝，以符合當地的法規及避免產品的保固失效。

硬體概觀



1	紅外線LED燈	在低光源的環境下提供照明。								
2	垂直校正螺絲	鬆開螺絲以調整攝影機的垂直角度。								
3	攝影機鏡頭	攝影機鏡頭。								
4	電源/狀態指示燈	顯示攝影機目前的狀態。								
5	光線感應器	光線感應器用於感測環境光源，以判斷切日式或夜視模式。								
6	水平校正螺絲	鬆開螺絲以調整攝影機的水平角度。								
7	microSD 記憶卡插槽	可插入microSD記憶卡用於儲存螢幕快照或是紀錄影像。								
8	乙太網路線接頭	可連接RJ-45乙太網路線提供攝影機網路，或是透過PoE方式供電至攝影機。								
9	配線孔道	允許配線從攝影機底部或側面穿出。								
10	配線連接埠	連接至額外配線(標準包裝內不包含)。								
		<table border="0"> <tbody> <tr> <td>1. 12V IN</td> <td>6. 12V OUT</td> </tr> <tr> <td>2. GND</td> <td>7. GND</td> </tr> <tr> <td>3. AUD IN</td> <td>8. RESET</td> </tr> <tr> <td>4. AUD GND</td> <td>9. DI</td> </tr> <tr> <td>5. AUD OUT</td> <td>10. DO</td> </tr> </tbody> </table>	1. 12V IN	6. 12V OUT	2. GND	7. GND	3. AUD IN	8. RESET	4. AUD GND	9. DI
1. 12V IN	6. 12V OUT									
2. GND	7. GND									
3. AUD IN	8. RESET									
4. AUD GND	9. DI									
5. AUD OUT	10. DO									

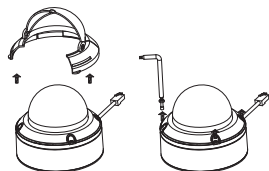
選購配線(請另行購買)



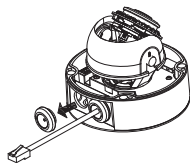
11	配線連接埠	連接至 DCS-6517。請參閱使用手冊，以取得更多關於AV纜線的連接方式。
12	DI/DO連接埠	DI/DO埠以連接外接設備。(DCS-6517不支援12 V DC 電源輸出)
13	Reset按鈕	按壓約10秒不放，將攝影機回復至出廠預設值。
14	24 V電源連接埠	DCS-6517不適用。
15	電源連接埠	連接12 V DC電源供應器(請另行購買)。
16	喇叭埠 (綠)	連接至喇叭。
17	麥克風埠 (紅)	連接至麥克風。
18	BNC連接埠	DCS-6517不適用。

連接至選購配線

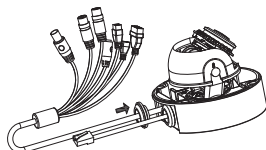
將遮陽罩從攝影機取下，使用隨附板手卸下攝影機頂部的四顆螺絲後，將攝影機外殼取下。



依據配線需求，將攝影機側邊的防水墊片取下。



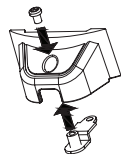
將攝影機連接埠及配線穿過配線孔後，將防水墊片裝回。



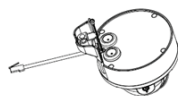
為確保攝影機是完全密封的，請務必確認防水墊片有正確的裝回。

側面配線孔道：

使用隨附螺絲將側蓋鎖上。

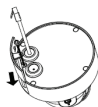


將側蓋滑入配線孔。



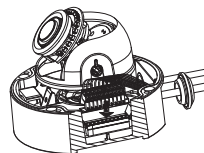
底部配線孔道：

使用隨附螺絲將防護側蓋鎖上。



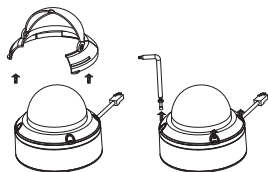
將攝影機連接埠連接至攝影機。

將攝影機外殼裝回並用螺絲固定，最後再將遮陽罩裝回。



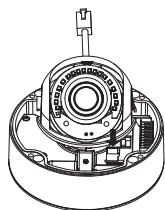
安裝microSD記憶卡

將遮陽罩從攝影機取下，使用隨附板手卸下攝影機頂部的四顆螺絲後，將攝影機外殼取下。



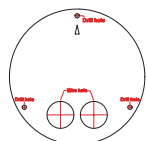
插入microSD記憶卡(金屬觸點請朝向相機外部)。
*欲取出記憶卡時，請將microSD記憶卡往插槽內部按壓後，即可取出記憶卡。

將攝影機外殼裝回並用螺絲固定，最後再將遮陽罩裝回。



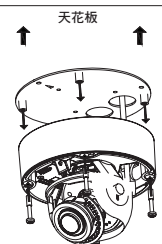
壁掛攝影機

在天花板或牆面上找到能夠支撐攝影機重量的地方，將校準貼紙貼在天花板或牆壁上。



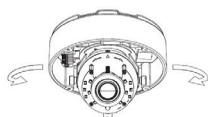
將壁掛支架對齊貼紙上的孔洞位置，在牆面上鑽孔後用螺絲固定。

將攝影機固定至壁掛支架上。

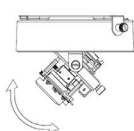


調整攝影機鏡頭

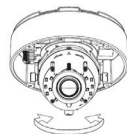
左右、上下、旋轉鏡頭模組至您所期望的位置後，將固定螺絲栓緊。



左右 375°



上下 90°



旋轉 90°

懸臂壁掛攝影機(選配)

使用隨附螺絲將壁掛背板固定至懸臂蓋上。

在天花板上找到一個適合的位置「34 mm (+2 / -0 mm)」。使用隨附的模板標記並切割壁掛孔。

在天花板上找到一個適合的位置「34 mm (+2 / -0 mm)」。使用隨附的模板標記並切割接線孔。

依照牆面的材質以適當的工具，用6mm的鑽頭在描出的孔位鑽出孔洞後，放入壁虎以支撐螺絲。

使用橡膠墊片密封懸臂支架與天花板之縫隙，以確保天花板與支架間的防水無疑。

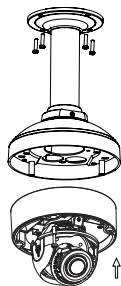
使用隨附螺絲將懸臂支架固定至天花板。

將懸臂蓋逆時針旋轉固定至懸臂支架上。

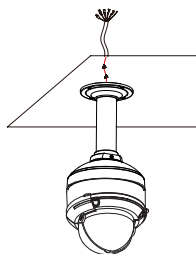
使用隨附螺絲將懸臂支架固定。



將乙太網路線及電源線穿過懸臂支架。



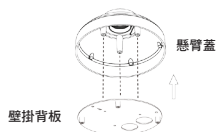
將攝影機機身使用隨附螺絲(長的)固定至支架蓋上。



水平壁掛安裝攝影機(選配)

使用隨附螺絲將壁掛背版固定至懸臂蓋上。

在天花板上找到一個適合的位置「34 mm (+2 / -0 mm)」。使用隨附的模板標記並切割壁掛孔。



依照牆面的材質以適當的工具，用6mm的鑽頭在描出的孔位鑽出孔洞後，放入壁虎以支撐螺絲。



使用橡膠墊片密封水平支架與天花板之縫隙，以確保天花板與支架間的防水無疑。

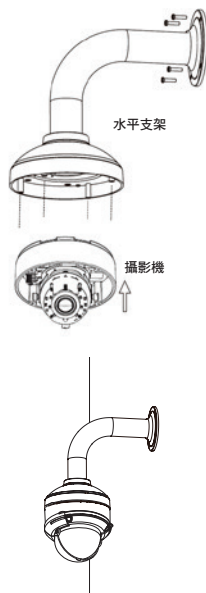
使用隨附螺絲將水平支架固定至天花板。

將支架蓋逆時針旋轉固定至水平支架上。

使用隨附螺絲將水平支架固定。

將乙太網路線及電源線穿過懸臂支架。

將攝影機機身使用隨附螺絲(長的)固定至支架蓋上。



中文

連接攝影機

透過PoE交換器連接

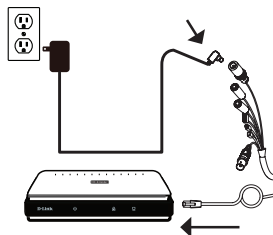
- 連接乙太網路線至您的PoE交換器或網路電源供應器，乙太網路線將可同時提供電源及網路連線。



若您已連接至選購配線，請依下方指示連線：

透過12 V DC 電源供應器供電(請另行購買)

- 連接乙太網路線至您的網路埠。
- 連接電源供應器至攝影機的電源連接埠後接上電源。



攝影機設定

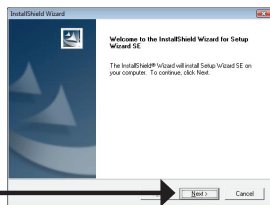
請將包裝內附的光碟放入您電腦的光碟機並開始執行安裝。若您電腦的自動執行功能已被停用，或D-Link Launcher無法自動執行時，請點選開始>執行後輸入「D:\autorun.exe」(D代表您光碟機的代號)。

點選「Setup Wizard」開始安裝。

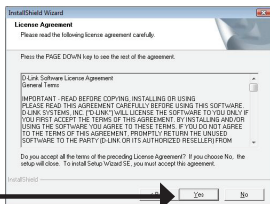


點選Setup Wizard後，下方頁面將會被開啟。

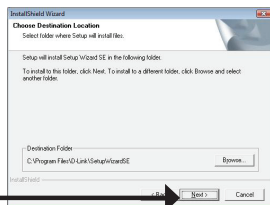
點選「Next」繼續下一步。



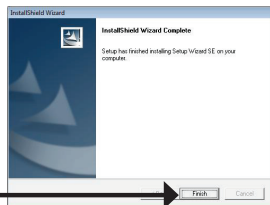
點選「Yes」同意協議。



點選「Next」開始進行安裝。
注意:安裝過程將會花費數分鐘。

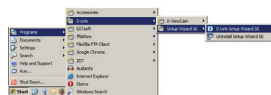


點選「Finish」完成安裝。



透過網頁瀏覽器檢視您的攝影機

點選Windows開始選單中的D-Link Setup Wizard SE圖示。(開始> D-Link > Setup Wizard SE)。



請選擇攝影機並點選「Link」的按鈕來存取網頁設定介面。



設定精靈將會自動以攝影機的IP位址來開啟設定網頁。

首次登入攝影機時，您會被要求設定這管理者帳號，在輸入密碼後，點選「Save」。



畫面將顯示您攝影機的即時影像，您可以開始控制及設定攝影機。若要取得更多關於設定網頁的資訊，請參考包裝內附的光碟或D-Link網站上的使用手冊。



其他資訊

請造訪官方網站<http://www.dlink.com>取得更多產品的相關資訊與協助。

保固資訊

請造訪官方網站<http://warranty.dlink.com/>查看您所在地區的保固資訊。

Petunjuk Pemasangan Cepat

panduan instalasi ini memberikan petunjuk dasar untuk meng-instal DCS-6517. Untuk informasi tambahan tentang cara menggunakan kamera, silakan lihat Panduan Pengguna yang tersedia di CD yang disertakan dalam paket ini atau dari akses ke situs web dukungan D-Link.

Isi Dalam Kemasan

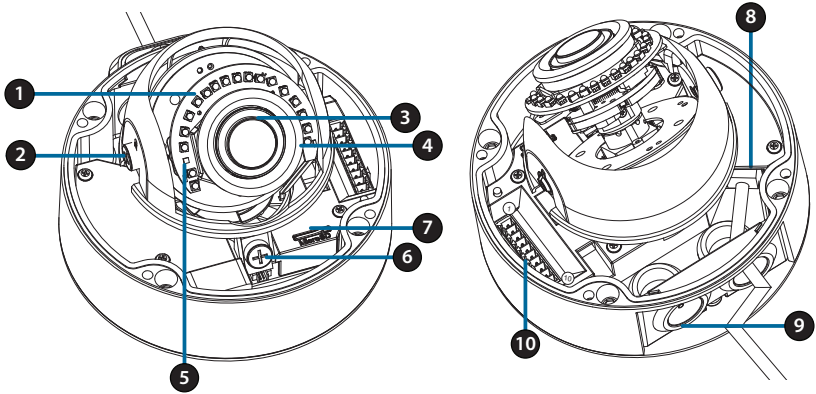
- Kamera DCS-6517 5 megapixel H.265 Outdoor Dome Network Camera
- Kabel Ethernet
- Ekstensi Adapter
- Piringan pemasangan dan skrup
- Pelindung Matahari
- Sisi Penutup
- Stiker Pemasangan
- Buku manual dan Software di dalam CD-ROM
- Buku Petunjuk pemasangan cepat

Jika ada item yang hilang, silahkan hubungi reseller anda.

Pemberitahuan Keamanan:

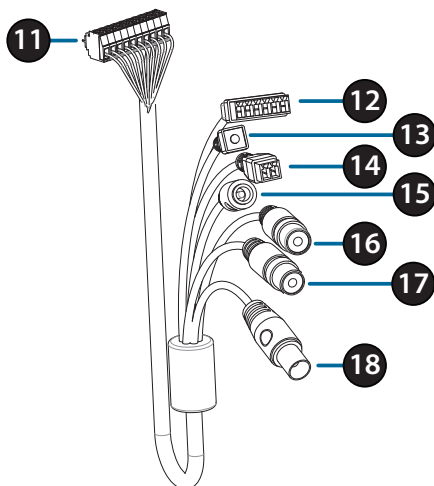
Instalasi dan servis harus dilakukan oleh teknisi bersertifikat sehingga dapat sesuai dengan semua kode lokal dan untuk mencegah pembatalan garansi Anda.

Tampilan Perangkat



1	IR LEDs	Memberikan pencahayaan dilingkungan dengan cahaya rendah								
2	Skrup Kunci Kemiringan	Dapat dilonggarkan dan di sesuaikan sudut kemiringan kamera.								
3	Lensa Kamera	lensa kamera untuk merekam video di daerah sekitarnya.								
4	LED Power/ Status	Mengindikasikan status aktual kamera.								
5	Sensor Cahaya	Mengukur kondisi pencahayaan dan menyesuaikan tampilan pada siang dan malam.								
6	Skrup Kunci Horizontal	Dapat dilonggarkan dan disesuaikan rotasi horizontal pada kamera								
7	Slot Kartu microSD Card	Masukan kartu microSD untuk merekam gambar atau sebuah video.								
8	Ethernet Jack	Hubungkan Kabel ethernet RJ45. Dapat digunakan dengan PoE untuk menghidupkan kamera								
9	Saluran Kabel	Memungkinkan kabel untuk keluar kamera dari belakang atau samping								
10	Port Kabel Harness	Penghubung ke kabel harness (tidak termasuk).								
		<table border="0"> <tbody> <tr> <td>1. 12V IN</td> <td>6. 12V OUT</td> </tr> <tr> <td>2. GND</td> <td>7. GND</td> </tr> <tr> <td>3. AUD IN</td> <td>8. RESET</td> </tr> <tr> <td>4. AUD GND</td> <td>9. DI</td> </tr> <tr> <td>5. AUD OUT</td> <td>10. DO</td> </tr> </tbody> </table>	1. 12V IN	6. 12V OUT	2. GND	7. GND	3. AUD IN	8. RESET	4. AUD GND	9. DI
1. 12V IN	6. 12V OUT									
2. GND	7. GND									
3. AUD IN	8. RESET									
4. AUD GND	9. DI									
5. AUD OUT	10. DO									

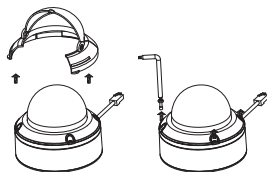
Optional Cable Harness (not included)



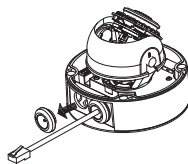
11	Konektor Kabel Harness	Hubungkan ke DCS-6517. Untuk rincian lebih lanjut tentang menghubungkan Kabel A/V silahkan liat pada buku manual
12	Konektor DI/DO	Konektor I/O untuk perangkat eksternal. (Keluaran 12V DC tidak di dukung oleh kamera DCS-6517)
13	Tombol Reset	Tekan dan Tahan Tombol Reset Selama 10 Detik untuk mereset perangkat ke settingan pabrik (awal)
14	Konektor Power 24 V	Tidak didukung oleh DCS-6517
15	Konektor Power	Power adapter untuk 12V DC(Tidak termasuk dalam kemasan)
16	Audio Out (Hijau)	Menghubungkan ke sebuah speaker.
17	Audio In (Merah)	Menghubungkan ke Audio
18	BNC Connector	Tidak di dukung oleh DCS-6517

Menghubungkan Kabel Harness (Opsional)

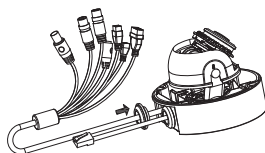
Lepaskan perisai matahari dengan mengangkatnya dari kamera. Gunakan kunci dalam kemasan untuk melepaskna 4 sekrup dari bagian atas kamera, kemudian lepaskan penutup kamera.



Lepaskan penyumbat dan penahan air dari samping atau bawah kamera tergantung pada bagaimana Anda ingin kabel tersebut keluar dari kamera.



Dorong konektor kamera dan kabel melalui lubang, dan masukkan konektor pelindung dan penahan air melalui kabel ini.

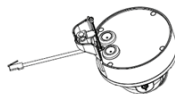


Pastikan steker/pelindung dimasukkan dengan benar untuk memastikan segel baik.

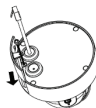
Untuk sisi samping kabel keluar:
Pasang sisi penutup dengan sekrup yang disediakan.



Geser penutup atas port Kabel.

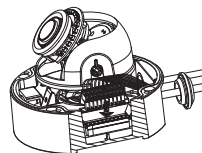


Untuk sisi bawah kabel keluar:
Pasang penutup sisi pelindung melalui sekrup yang disediakan.



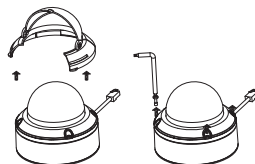
Hubungkan konektor kamera ke kamera.

Pasang kembali penutup kamera menggunakan kunci keamanan dengan mengencangkan 3 sekrup, dan pasang kembali perisai matahari.

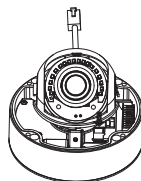


Pemasangan Kartu microSD

Lepaskan perisai matahari dengan mengangkatnya dari kamera. Gunakan kunci dalam kemasan untuk melepaskan 4 sekrup dari bagian atas kamera, kemudian lepaskan penutup kamera.



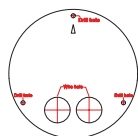
Masukkan kartu microSD dengan kontak berwarna emas menghadap bagian luar kamera. Untuk mengeluarkan kartu microSD, dorong kartu ke dalam slot.



Pasang kembali penutup kamera menggunakan kunci keamanan untuk mengencangkan ketiga baut, dan pasang kembali perisai matahari.

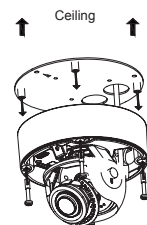
Meletakan Kamera di sisi Atap

Cari posisi yang sesuai di plafond yang mampu mendukung berat kamera. Pasang stiker keselarasan di plafond atau dinding.



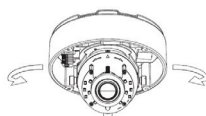
Sejajarkan piring bantalan di lubang boor pada permukaan plafond kemudian kencangkan skrup.

Sejajarkan kamera ke piring bantalan dan kencangkan body kamera ke piringan dan sekrup bodi kamera ke piringan tersebut.

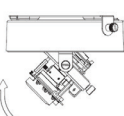


Mengatur Penempatan Lensa Kamera

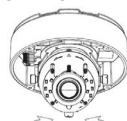
Sesuaikan gimbal lensa kamera ; Mengubah posisi lensa kamera ke ke kiri, kanan, atas dan bawah sesuai dengan posisi yang diinginkan. Kencangkan Skrup Kamera gimbal Lens; Mengubah modul lensa kiri dan kanan, atas dan bawah dan orientasi hingga posisi yang diinginkan tercapai. Kencangkan skrup pada putaran dan kemiringan setelah mendapatkan posisi lensa yang diinginkan.



Perputaran 375°



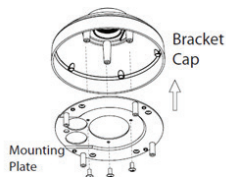
Kemiringan 90°



Rotasi 90°

Memasang lokasi menggantung(Opsional)

Memasang piringan bantalan untuk tutup braket menggunakan tiga sekrup disertakan.



Cari posisi yang sesuai di langit-langit (Plafond) untuk 34 mm (2 / -0 mm) lubang yang akan diboor. Gunakan contoh yang disertakan untuk menandai dan memboor lubang pemasangan.

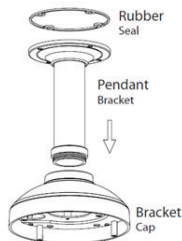
Cari posisi yang sesuai di langit-langit plafond untuk 34 mm (2 / -0 mm) lubang yang akan dibuat. Gunakan contoh yang disertakan untuk menandai dan mengebor lubang kabel.

Mengebor empat lubang 6mm sesuai dengan lubang di contoh pemasangan dan masukkan jangkar plastik ke lubang tersebut.

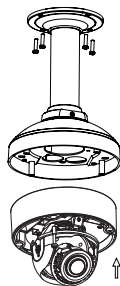
Tempatkan karet pelindung antara braket gantungan dan langit-langit plafond untuk memastikan segel tahan air antara langit-langit dan braket. Pasang braket gantung ke langit-langit plafon menggunakan sekrup yang disediakan.

Pasang tutup braket ke bagian bawah braket gantung dengan memutar tutup berlawanan untuk mengencangkan

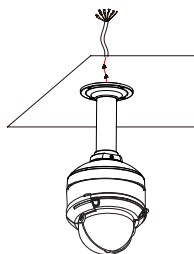
Masukkan sekrup ke dasar braket gantung di bagian atas, untuk mengamankan tutup braket ke tempatnya.



Lalui sebuah kabel ethernet dan kabel power melalui gantungan braket.



Tempatkan bodi kamera ke cap braket dan ikatkan kamera ke lengkungan braket dengan menggunakan tiga sekrup panjang yang disediakan.

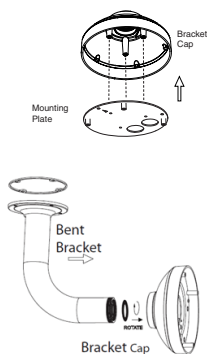


Memasang Braket penempatan sudut kanan (Opsional)

Memasang penempatan piringan untuk tutup braket dengan menggunakan tiga sekrup.

Cari posisi yang sesuai di langit-langit plafond untuk 34 mm (2 / -0 mm) lubang yang akan di bor. Gunakan contoh yang disertakan untuk menandai dan memboor lubang penempatan.

Mengebor empat lubang 6 mm sesuai dengan lubang di contoh pemasangan dan masukkan jangkar plastik ke lubang tersebut.



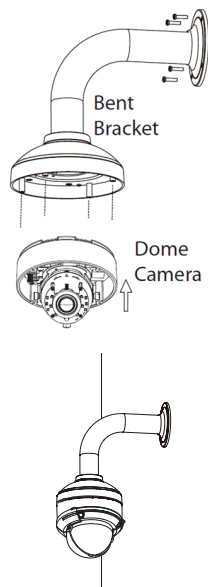
Tempatkan karet pelindung antara braket sudut kanan dan langit-langit plafon untuk memastikan segel tahan air antara langit-langit dan braket.

Pasang sudut kanan braket ke langit-langit plafon menggunakan sekrup yang disediakan.
Pasang sudut kanan braket ke langit-langit plafon menggunakan pengikat tutup braket di bagian bawah braket sudut kanan dengan memutar tutup berlawanan untuk mengencangkan dengan sekrup disediakan.

Masukkan sekrup ke dasar braket sudut kanan di bagian atas, tutup braket untuk mengamankan tutup braket di tempatnya.

Lalu sebuah kabel ethernet dan kabel power melalui gantungan braket.

Tempatkan bodi kamera ke cap braket dan ikatkan kamera ke lengkungan braket dengan menggunakan tiga sekrup panjang yang disediakan.



Menghubungkan Kamera

Hubungkan dengan Switch PoE

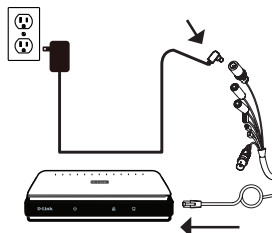
- Hubungkan sebuah kabel ethernet ke Switch PoE atau Injector. Kabel ethernet akan memberikan daya dan koneksi jaringan pada kamera.



Jika Anda memiliki opsional kabel harness, Anda juga dapat menggunakan metode koneksi berikut:

Konesikan dengan Power Adaptor 12V DC (Terpisah dalam kemasan)

- Hubungkan kabel ethernet ke jaringan anda.
- Hubungkan adaptor daya ke konektor daya kamera, kemudian pasang di adaptor listrik.



Konfigurasi Kamera

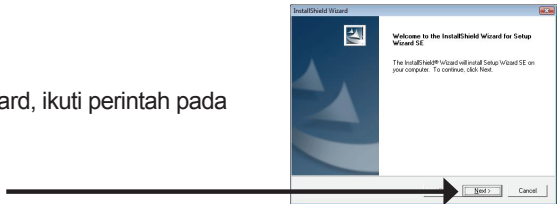
Masukkan CD DCS-6517 ke dalam CD-ROM komputer Anda untuk memulai instalasi. Jika fungsi Autorun di komputer Anda dinonaktifkan, atau jika D-Link Launcher gagal untuk memulai secara otomatis, jalankan **D: \ autorun.exe**, di mana D: mewakili huruf drive dari drive CD-ROM Anda.

Klik **Setup Wizard** untuk memulai Instalasi.

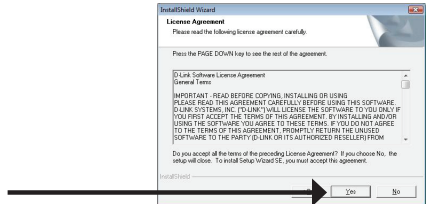


Setelah menekan setup wizard, ikuti perintah pada aplikasi yang terbuka.

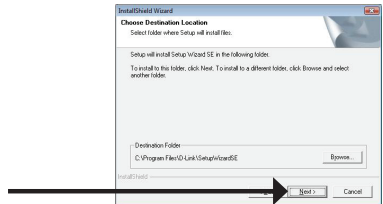
Klik **Next** untuk continue.



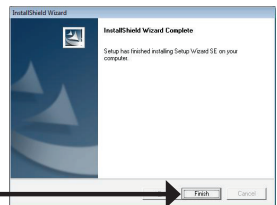
Klik **Ya** untuk menerima isi perjanjian.



Untuk memulai proses instalasi, Klik **Next**



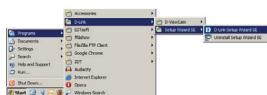
Catatan: Proses instalasi mungkin membutuhkan beberapa menit untuk selesai.



Klik **Finish** Untuk menyelesaikan instalasi.

Melihat Kamera Melalui Browser

Klik pada **D-Link Setup Wizard SE** ikon yang tersedia pada menu Start Windows Anda (**Start > D-Link > Setup Wizard SE**).



Pilih kamera dan klik **Link** untuk mengakses konfigurasi web.



Setup Wizard secara otomatis akan membuka browser web Anda ke alamat IP kamera.

Pertama kali Anda terhubung ke kamera, Anda akan diminta untuk menetapkan password untuk account administrator. Setelah memasukkan password, klik **Save**.



Halaman video kamera akan terbuka, dan Anda sekarang dapat mengontrol dan mengkonfigurasi kamera Anda. Untuk informasi tambahan tentang konfigurasi web, silakan lihat user manual, yang tersedia di situs D-Link.



Informasi Tambahan

bantuan tambahan dan informasi produk tersedia secara online di <http://www.dlink.com/>

Informasi Garansi

Silahkan kunjungi <http://warranty.dlink.com/> untuk informasi jaminan untuk wilayah anda.

Regulatory Statements (Only for Class A product)

Federal Communication Commission Interference Statement

This equipment has been tested and found to comply with the limits for a Class A digital device, pursuant to part 15 of the FCC Rules. These limits are designed to provide reasonable protection against harmful interference when the equipment is operated in a commercial environment. This equipment generates, uses, and can radiate radio frequency energy and, if not installed and used in accordance with the instruction manual, may cause harmful interference to radio communications. Operation of this equipment in a residential area is likely to cause harmful interference in which case the user will be required to correct the interference at his own expense.

Non-modification Statement

Any changes or modifications not expressly approved by the party responsible for compliance could void the user's authority to operate the equipment.

Caution

This device complies with Part 15 of the FCC Rules. Operation is subject to the following two conditions:

(1) This device may not cause harmful interference, and (2) this device must accept any interference received, including interference that may cause undesired operation.

Innovation, Science and Economic Development Canada (ISED) Statement:

This Class A digital apparatus complies with Canadian ICES-003.

Cet appareil numérique de la classe A est conforme à la norme NMB-003 du Canada.

警告使用者:

此為甲類的資訊技術設備，在居住環境中使用時，可能會造成射頻擾動，在這種情況下，使用者會被要求採取某些適當的對策。

CE EMI Class A Warning

This equipment is compliant with Class A of CISPR 32. In a residential environment this equipment may cause radio interference.

Regulatory Statements (Only for Class B product)

Federal Communication Commission Interference Statement

This equipment has been tested and found to comply with the limits for a Class B digital device, pursuant to Part 15 of the FCC Rules. These limits are designed to provide reasonable protection against harmful interference in a residential installation. This equipment generates, uses and can radiate radio frequency energy and, if not installed and used in accordance with the instructions, may cause harmful interference to radio communications. However, there is no guarantee that interference will not occur in a particular installation. If this equipment does cause harmful interference to radio or television reception, which can be determined by turning the equipment off and on, the user is encouraged to try to correct the interference by one of the following measures:

- Reorient or relocate the receiving antenna.
- Increase the separation between the equipment and receiver.
- Connect the equipment into an outlet on a circuit different from that to which the receiver is connected.
- Consult the dealer or an experienced radio/TV technician for help.

Non-modification Statement

Any changes or modifications not expressly approved by the party responsible for compliance could void the user's authority to operate the equipment.

Caution

This device complies with Part 15 of the FCC Rules. Operation is subject to the following two conditions: (1) This device may not cause harmful interference, and (2) this device must accept any interference received, including interference that may cause undesired operation.

Innovation, Science and Economic Development Canada (ISED) Statement:

This Class B digital apparatus complies with Canadian ICES-003.

Cet appareil numérique de la classe B est conforme à la norme NMB-003 du Canada.

SAFETY INSTRUCTIONS

The following general safety guidelines are provided to help ensure your own personal safety and protect your product from potential damage. Remember to consult the product user instructions for more details.

- Static electricity can be harmful to electronic components. Discharge static electricity from your body (i.e. touching grounded bare metal) before touching the product.
- Do not attempt to service the product and never disassemble the product. For some products with a user replaceable battery, please read and follow the instructions in the user manual.
- Do not spill food or liquid on your product and never push any objects into the openings of your product.
- Do not use this product near water, areas with high humidity, or condensation unless the product is specifically rated for outdoor application.
- Keep the product away from radiators and other heat sources.
- Always unplug the product from mains power before cleaning and use a dry lint free cloth only.

SICHERHEITSINSTRUKTION

Die folgenden allgemeinen Sicherheitsinstruktionen dienen als Hilfe zur Gewährleistung Ihrer eigenen Sicherheit und zum Schutz Ihres Produkts. Weitere Details finden Sie in den Benutzeranleitungen zum Produkt.

- Statische Elektrizität kann elektronischen Komponenten schaden. Um Schäden durch statische Aufladung zu vermeiden, leiten Sie elektrostatische Ladungen von Ihrem Körper ab, (z. B. durch Berühren eines geerdeten blanken Metallteils), bevor Sie das Produkt berühren.
- Unterlassen Sie jeden Versuch, das Produkt zu warten, und versuchen Sie nicht, es in seine Bestandteile zu zerlegen. Für einige Produkte mit austauschbaren Akkus lesen Sie bitte das Benutzerhandbuch und befolgen Sie die dort beschriebenen Anleitungen.
- Vermeiden Sie, dass Speisen oder Flüssigkeiten auf Ihr Produkt gelangen, und stecken Sie keine Gegenstände in die Gehäuseschlitze oder -öffnungen Ihres Produkts.
- Verwenden Sie dieses Produkt nicht in unmittelbarer Nähe von Wasser und nicht in Bereichen mit hoher Luftfeuchtigkeit oder Kondensation, es sei denn, es ist speziell zur Nutzung in Außenbereichen vorgesehen und eingestuft.
- Halten Sie das Produkt von Wärmequellen entfernt wie z.B. Heizkörper.
- Trennen Sie das Produkt immer von der Stromzufuhr, bevor Sie es reinigen und verwenden Sie dazu ausschließlich ein trockenes fusselfreies Tuch.

CONSIGNES DE SÉCURITÉ

Les consignes générales de sécurité ci-après sont fournies afin d'assurer votre sécurité personnelle et de protéger le produit d'éventuels dommages. Veuillez consulter les consignes d'utilisation du produit pour plus de détails.

- L'électricité statique peut endommager les composants électroniques. Déchargez l'électricité statique de votre corps (en touchant un objet en métal relié à la terre par exemple) avant de toucher le produit.
- N'essayez pas d'intervenir sur le produit et ne le démontez jamais. Pour certains produits contenant une batterie remplaçable par l'utilisateur, veuillez lire et suivre les consignes contenues dans le manuel d'utilisation.
- Ne renversez pas d'aliments ou de liquide sur le produit et n'insérez jamais d'objets dans les orifices.
- N'utilisez pas ce produit à proximité d'un point d'eau, de zones très humides ou de condensation sauf si le produit a été spécifiquement conçu pour une application extérieure.
- Éloignez le produit des radiateurs et autres sources de chaleur.
- Débranchez toujours le produit de l'alimentation avant de le nettoyer et utilisez uniquement un chiffon sec non pelucheux.

INSTRUCCIONES DE SEGURIDAD

Las siguientes directrices de seguridad general se facilitan para ayudarle a garantizar su propia seguridad personal y para proteger el producto frente a posibles daños. No olvide consultar las instrucciones del usuario del producto para obtener más información.

- La electricidad estática puede resultar nociva para los componentes electrónicos. Descargue la electricidad estática de su cuerpo (p. ej., tocando algún metal sin revestimiento conectado a tierra) antes de tocar el producto.
- No intente realizar el mantenimiento del producto ni lo desmonte nunca. Para algunos productos con batería reemplazable por el usuario, lea y siga las instrucciones del manual de usuario.
- No derrame comida o líquidos sobre el producto y nunca deje que caigan objetos en las aberturas del mismo.
- No utilice este producto cerca del agua, en zonas con humedad o condensación elevadas a menos que el producto esté clasificado específicamente para aplicación en exteriores.
- Mantenga el producto alejado de los radiadores y de otras fuentes de calor.
- Desenchufe siempre el producto de la alimentación de red antes de limpiarlo y utilice solo un paño seco sin pelusa

ISTRUZIONI PER LA SICUREZZA

Le seguenti linee guida sulla sicurezza sono fornite per contribuire a garantire la sicurezza personale degli utenti e a proteggere il prodotto da potenziali danni. Per maggiori dettagli, consultare le istruzioni per l'utente del prodotto.

- L'elettricità statica può essere pericolosa per i componenti elettronici. Scaricare l'elettricità statica dal corpo (ad esempio toccando una parte metallica collegata a terra) prima di toccare il prodotto.
- Non cercare di riparare il prodotto e non smontarlo mai. Per alcuni prodotti dotati di batteria sostituibile dall'utente, leggere e seguire le istruzioni riportate nel manuale dell'utente.
- Non versare cibi o liquidi sul prodotto e non spingere mai alcun oggetto nelle aperture del prodotto.
- Non usare questo prodotto vicino all'acqua, in aree con elevato grado di umidità o soggette a condensa a meno che il prodotto non sia specificatamente approvato per uso in ambienti esterni.
- Tenere il prodotto lontano da caloriferi e altre fonti di calore.
- Scollegare sempre il prodotto dalla presa elettrica prima di pulirlo e usare solo un panno asciutto che non lasci filacce.

VEILIGHEIDSINFORMATIE

De volgende algemene veiligheidsinformatie werd verstrekt om uw eigen persoonlijke veiligheid te waarborgen en uw product te beschermen tegen mogelijke schade. Denk eraan om de gebruikersinstructies van het product te raadplegen voor meer informatie.

- Statische elektriciteit kan schadelijk zijn voor elektronische componenten. Ontlaad de statische elektriciteit van uw lichaam (d.w.z. het aanraken van geaard bloot metaal) voordat u het product aanraakt.
- U mag nooit proberen het product te onderhouden en u mag het product nooit demonteren. Voor sommige producten met door de gebruiker te vervangen batterij, dient u de instructies in de gebruikershandleiding te lezen en te volgen.
- Mors geen voedsel of vloeistof op uw product en u mag nooit voorwerpen in de openingen van uw product duwen.
- Gebruik dit product niet in de buurt van water, gebieden met hoge vochtigheid of condensatie, tenzij het product specifiek geclassificeerd is voor gebruik buitenshuis.
- Houd het product uit de buurt van radiators en andere warmtebronnen.
- U dient het product steeds los te koppelen van de stroom voordat u het reinigt en gebruik uitsluitend een droge pluisvrije doek

DISPOSING AND RECYCLING YOUR PRODUCT



ENGLISH

EN



This symbol on the product or packaging means that according to local laws and regulations this product should be not be disposed of in the household waste but sent for recycling. Please take it to a collection point designated by your local authorities once it has reached the end of its life, some will accept products for free. By recycling the product and its packaging in this manner you help to conserve the environment and protect human health.

D-Link and the environment

At D-Link, we understand and are committed to reducing any impact our operations and products may have on the environment. To minimise this impact D-Link designs and builds its products to be as environmentally friendly as possible, by using recyclable, low toxic materials in both products and packaging.

D-Link recommends that you always switch off or unplug your D-Link products when they are not in use. By doing so you will help to save energy and reduce CO2 emissions.

To learn more about our environmentally responsible products and packaging please visit www.dlinkgreen.com

DEUTSCH

DE



Dieses Symbol auf dem Produkt oder der Verpackung weist darauf hin, dass dieses Produkt gemäß bestehender örtlicher Gesetze und Vorschriften nicht über den normalen Hausmüll entsorgt werden sollte, sondern einer Wiederverwertung zuzuführen ist. Bringen Sie es bitte zu einer von Ihrer Kommunalbehörde entsprechend amtlich ausgewiesenen Sammelstelle, sobald das Produkt das Ende seiner Nutzungsdauer erreicht hat. Für die Annahme solcher Produkte erheben einige dieser Stellen keine Gebühren. Durch ein auf diese Weise durchgeführtes Recycling des Produkts und seiner Verpackung helfen Sie, die Umwelt zu schonen und die menschliche Gesundheit zu schützen.

D-Link und die Umwelt

D-Link ist sich den möglichen Auswirkungen seiner Geschäftstätigkeiten und seiner Produkte auf die Umwelt bewusst und fühlt sich verpflichtet, diese entsprechend zu mindern. Zu diesem Zweck entwickelt und stellt D-Link seine Produkte mit dem Ziel größtmöglicher Umweltfreundlichkeit her und verwendet wiederverwertbare, schadstoffarme Materialien bei Produktherstellung und Verpackung.

D-Link empfiehlt, Ihre Produkte von D-Link, wenn nicht in Gebrauch, immer auszuschalten oder vom Netz zu nehmen. Auf diese Weise helfen Sie, Energie zu sparen und CO2-Emissionen zu reduzieren. Wenn Sie mehr über unsere umweltgerechten Produkte und Verpackungen wissen möchten, finden Sie entsprechende Informationen im Internet unter www.dlinkgreen.com.

FRANÇAIS

FR



Ce symbole apposé sur le produit ou son emballage signifie que, conformément aux lois et réglementations locales, ce produit ne doit pas être éliminé avec les déchets domestiques mais recyclé. Veuillez le rapporter à un point de collecte prévu à cet effet par les autorités locales; certains acceptent vos produits gratuitement. En recyclant le produit et son emballage de cette manière, vous aidez à préserver l'environnement et à protéger la santé de l'homme.

D-Link et l'environnement

Chez D-Link, nous sommes conscients de l'impact de nos opérations et produits sur l'environnement et nous engageons à le réduire. Pour limiter cet impact, D-Link conçoit et fabrique ses produits de manière aussi écologique que possible, en utilisant des matériaux recyclables et faiblement toxiques, tant dans ses produits que ses emballages.

D-Link recommande de toujours éteindre ou débrancher vos produits D-Link lorsque vous ne les utilisez pas. Vous réaliserez ainsi des économies d'énergie et réduirez vos émissions de CO2.

Pour en savoir plus sur les produits et emballages respectueux de l'environnement, veuillez consulter le www.dlinkgreen.com



Este símbolo en el producto o el embalaje significa que, de acuerdo con la legislación y la normativa local, este producto no se debe desechar en la basura doméstica sino que se debe reciclar. Llévelo a un punto de recogida designado por las autoridades locales una vez que ha llegado al fin de su vida útil; algunos de ellos aceptan recogerlos de forma gratuita. Al reciclar el producto y su embalaje de esta forma, contribuye a preservar el medio ambiente y a proteger la salud de los seres humanos.

D-Link y el medio ambiente

En D-Link, comprendemos y estamos comprometidos con la reducción del impacto que puedan tener nuestras actividades y nuestros productos en el medio ambiente. Para reducir este impacto, D-Link diseña y fabrica sus productos para que sean lo más ecológicos posible, utilizando materiales reciclables y de baja toxicidad tanto en los productos como en el embalaje. D-Link recomienda apagar o desenchufar los productos D-Link cuando no se estén utilizando. Al hacerlo, contribuirá a ahorrar energía y a reducir las emisiones de CO₂.

Para obtener más información acerca de nuestros productos y embalajes ecológicos, visite el sitio www.dlinkgreen.com



La presenza di questo simbolo sul prodotto o sulla confezione del prodotto indica che, in conformità alle leggi e alle normative locali, questo prodotto non deve essere smaltito nei rifiuti domestici, ma avviato al riciclo. Una volta terminato il ciclo di vita utile, portare il prodotto presso un punto di raccolta indicato dalle autorità locali. Alcuni questi punti di raccolta accettano gratuitamente i prodotti da riciclare. Scegliendo di riciclare il prodotto e il relativo imballaggio, si contribuirà a preservare l'ambiente e a salvaguardare la salute umana.

D-Link e l'ambiente

D-Link cerca da sempre di ridurre l'impatto ambientale dei propri stabilimenti e dei propri prodotti. Allo scopo di ridurre al minimo tale impatto, D-Link progetta e realizza i propri prodotti in modo che rispettino il più possibile l'ambiente, utilizzando materiali riciclabili a basso tasso di tossicità sia per i prodotti che per gli imballaggi.

D-Link raccomanda di spegnere sempre i prodotti D-Link o di scollegarne la spina quando non vengono utilizzati. In questo modo si contribuirà a risparmiare energia e a ridurre le emissioni di anidride carbonica.

Per ulteriori informazioni sui prodotti e sugli imballaggi D-Link a ridotto impatto ambientale, visitate il sito all'indirizzo www.dlinkgreen.com



Dit symbool op het product of de verpakking betekent dat dit product volgens de plaatselijke wetgeving niet mag worden weggegooid met het huishoudelijk afval, maar voor recyclage moeten worden ingeleverd. Zodra het product het einde van de levensduur heeft bereikt, dient u het naar een inzamelpunt te brengen dat hiertoe werd aangeduid door uw plaatselijke autoriteiten, sommige autoriteiten accepteren producten zonder dat u hiervoor dient te betalen. Door het product en de verpakking op deze manier te recyclen helpt u het milieu en de gezondheid van de mens te beschermen.

D-Link en het milieu

Bij D-Link spannen we ons in om de impact van onze handelingen en producten op het milieu te beperken. Om deze impact te beperken, ontwerpt en bouwt D-Link zijn producten zo milieuvriendelijk mogelijk, door het gebruik van recycleerbare producten met lage toxiciteit in product en verpakking.

D-Link raadt aan om steeds uw D-Link producten uit te schakelen of uit de stekker te halen wanneer u ze niet gebruikt. Door dit te doen bespaart u energie en beperkt u de CO₂-emissies.

Breng een bezoek aan www.dlinkgreen.com voor meer informatie over onze milieuverantwoorde producten en verpakkingen



Ten symbol umieszczony na produkcie lub opakowaniu oznacza, że zgodnie z miejscowym prawem i lokalnymi przepisami niniejszego produktu nie wolno wyrzucać jak odpady czy śmieci z gospodarstwa domowego, lecz należy go poddać procesowi recyklingu. Po zakończeniu użytkowania produktu, niektóre odpowiednio do tego celu podmioty przyjmują takie produkty nieodpłatnie, dlatego prosimy dostarczyć go do punktu zbiórki wskazanego przez lokalne władze. Poprzez proces recyklingu i dzięki takiemu postępowaniu z produktem oraz jego opakowaniem, pomogą Państwo chronić środowisko naturalne i dbać o ludzkie zdrowie.

D-Link i środowisko

W D-Link podchodzimy w sposób świadomy do ochrony otoczenia oraz jesteśmy zaangażowani w zmniejszanie wpływu naszych działań i produktów na środowisko naturalne. W celu zminimalizowania takiego wpływu firma D-Link konstruuje i wytwarza swoje produkty w taki sposób, aby były one jak najbardziej przyjazne środowisku, stosując do tych celów materiały nadające się do powtórnego wykorzystania, charakteryzujące się małą toksycznością zarówno w przypadku samych produktów jak i opakowań.

Firma D-Link zaleca, aby Państwo zawsze prawidłowo wyłączali z użytku swoje produkty D-Link, gdy nie są one wykorzystywane. Postępując w ten sposób pozwalają Państwo oszczędzać energię i zmniejszać emisje CO₂.

Aby dowiedzieć się więcej na temat produktów i opakowań mających wpływ na środowisko prosimy zapoznać się ze stroną internetową www.dlinkgreen.com.



Tento symbol na výrobku nebo jeho obalu znamená, že podle místně platných předpisů se výrobek nesmí vyhazovat do komunálního odpadu, ale odeslat k recyklaci. Až výrobek doslouží, odnese jej prosím na sběrné místo určené místními úřady k tomuto účelu. Některá sběrná místa přijímají výrobky zdarma. Recyklací výrobku i obalu pomáháte chránit životní prostředí i lidské zdraví.

D-Link a životní prostředí

Ve společnosti D-Link jsme si vědomi vlivu našich provozů a výrobků na životní prostředí a snažíme se o minimalizaci těchto vlivů. Proto své výrobky navrhujeme a vyrábíme tak, aby byly co nejekologičtější, a ve výrobcích i obalech používáme recyklovatelné a nízkotoxické materiály. Společnost D-Link doporučuje, abyste své výrobky značky D-Link vypnuli nebo vytáhli ze zásuvky vždy, když je nepoužíváte. Pomůžete tak šetřit energii a snížit emise CO₂.

Více informací o našich ekologických výrobcích a obalech najdete na adrese www.dlinkgreen.com.



Ez a szimbólum a terméken vagy a csomagoláson azt jelenti, hogy a helyi törvényeknek és szabályoknak megfelelően ez a termék nem semmisíthető meg a háztartási hulladékkal együtt, hanem újrahasznosításra kell küldeni. Kérjük, hogy a termék élettartamának elteltét követően vigye azt a helyi hatóság által kijelölt gyűjtőhelyre. A termékek egyes helyeken ingyen elhelyezhetők. A termék és a csomagolás újrahasznosításával segíti védeni a környezetet és az emberek egészségét.

A D-Link és a környezet

A D-Linknél megértjük és elköteleztettek vagyunk a műveleteink és termékeink környezetre gyakorolt hatásainak csökkentésére. Az ezen hatás csökkentése érdekében a D-Link a lehető leginkább környezetbarát termékeket tervez és gyárt azért, hogy újrahasznosítható, alacsony károsanyag-tartalmú termékeket gyárt és csomagolásokat alkalmaz.

A D-Link azt javasolja, hogy mindig kapcsolja ki vagy húzza ki a D-Link termékeket a tápforrásból, ha nem használja azokat. Ezzel segít az energia megtakarításában és a szén-dioxid kibocsátásának csökkentésében.

Környezetbarát termékeinkről és csomagolásainkról további információkat a www.dlinkgreen.com weboldalon tudhat meg.

NORSK

NO



Dette symbolet på produktet eller forpakningen betyr at dette produktet ifølge lokale lover og forskrifter ikke skal kastes sammen med husholdningsavfall, men leveres inn til gjenvinning. Vennligst ta det til et innsamlingssted anvist av lokale myndigheter når det er kommet til slutten av levetiden. Noen steder aksepteres produkter uten avgift. Ved på denne måten å gjenvinne produktet og forpakningen hjelper du å verne miljøet og beskytte folks helse.

D-Link og miljøet

Hos D-Link forstår vi oss på og er forpliktet til å minske innvirkningen som vår drift og våre produkter kan ha på miljøet. For å minimalisere denne innvirkningen designer og lager D-Link produkter som er så miljøvennlig som mulig, ved å bruke resirkulerbare, lav-toksiske materialer både i produktene og forpakningen.

D-Link anbefaler at du alltid slår av eller frakobler D-Link-produkter når de ikke er i bruk. Ved å gjøre dette hjelper du å spare energi og å redusere CO2-utslipp.

For mer informasjon angående våre miljøansvarlige produkter og forpakninger kan du gå til www.dlinkgreen.com

DANSK

DK



Dette symbol på produktet eller emballagen betyder, at dette produkt i henhold til lokale love og regler ikke må bortskaffes som husholdningsaffald, mens skal sendes til genbrug. Indlever produktet til et indsamlingssted som angivet af de lokale myndigheder, når det er nået til slutningen af dets levetid. I nogle tilfælde vil produktet blive modtaget gratis. Ved at indlevere produktet og dets emballage til genbrug på denne måde bidrager du til at beskytte miljøet og den menneskelige sundhed.

D-Link og miljøet

Hos D-Link forstår vi og bestræber os på at reducere enhver indvirkning, som vores aktiviteter og produkter kan have på miljøet. For at minimere denne indvirkning designer og producerer D-Link sine produkter, så de er så miljøvenlige som muligt, ved at bruge genanvendelige materialer med lavt giftighedsniveau i både produkter og emballage.

D-Link anbefaler, at du altid slukker eller frakobler dine D-Link-produkter, når de ikke er i brug. Ved at gøre det bidrager du til at spare energi og reducere CO2-udledninger.

Du kan finde flere oplysninger om vores miljømæssigt ansvarlige produkter og emballage på www.dlinkgreen.com

SUOMI

FI



Tämä symboli tuotteen pakkauksessa tarkoittaa, että paikallisten lakien ja säännösten mukaisesti tätä tuotetta ei pidä hävittää yleisen kotitalousjätteen seassa vaan se tulee toimittaa kierrätettäväksi. Kun tuote on elinkaarensa päässä, toimita se lähimpään viranomaisten hyväksymään kierrätyspisteeseen. Kierrättämällä käytetyn tuotteen ja sen pakkauksen autat tukemaan sekä ympäristön että ihmisten terveyttä ja hyvinvointia.

D-Link ja ympäristö

D-Link ymmärtää ympäristönsuojelun tärkeyden ja on sitoutunut vähentämään tuotteistaan ja niiden valmistuksesta ympäristölle mahdollisesti aiheutuvia haittavaikutuksia. Nämä negatiiviset vaikutukset minimoidakseen D-Link suunnittelee ja valmistaa tuotteensa mahdollisimman ympäristöystävällisiksi käyttämällä kierrätettäviä, alhaisia pitoisuuksia haitallisia aineita sisältäviä materiaaleja sekä tuotteissaan että niiden pakkauksissa.

Suosittellemme, että irrotat D-Link-tuotteesi virtalähteestä tai sammutat ne aina, kun ne eivät ole käytössä. Toimimalla näin autat säästämään energiaa ja vähentämään hiilidioksidipäästöjä.

Lue lisää ympäristöystävällisistä D-Link-tuotteista ja pakkauksistamme osoitteesta www.dlinkgreen.com



Den här symbolen på produkten eller förpackningen betyder att produkten enligt lokala lagar och föreskrifter inte skall kastas i hushållssoptorna utan i stället återvinnas. Ta den vid slutet av dess livslängd till en av din lokala myndighet utsedd uppsamlingsplats, vissa accepterar produkter utan kostnad. Genom att på detta sätt återvinna produkten och förpackningen hjälper du till att bevara miljön och skydda människors hälsa.

D-Link och miljön

På D-Link förstår vi och är fast beslutna att minska den påverkan våra verksamheter och produkter kan ha på miljön. För att minska denna påverkan utformar och bygger D-Link sina produkter för att de ska vara så miljövänliga som möjligt, genom att använda återvinningsbara material med låg gifthalt i både produkter och förpackningar.

D-Link rekommenderar att du alltid stänger av eller kopplar ur dina D-Link produkter när du inte använder dem. Genom att göra detta hjälper du till att spara energi och minska utsläpp av koldioxid.

För mer information om våra miljövänliga produkter och förpackningar www.dlinkgreen.com



Este símbolo no produto ou embalagem significa que, de acordo com as leis e regulamentações locais, este produto não deverá ser eliminado juntamente com o lixo doméstico mas enviado para a reciclagem. Transporte-o para um ponto de recolha designado pelas suas autoridades locais quando este tiver atingido o fim da sua vida útil, alguns destes pontos aceitam produtos gratuitamente. Ao reciclar o produto e respectiva embalagem desta forma, ajuda a preservar o ambiente e protege a saúde humana.

A D-Link e o ambiente

Na D-Link compreendemos e comprometemo-nos com a redução do impacto que as nossas operações e produtos possam ter no ambiente. Para minimizar este impacto a D-Link concebe e constrói os seus produtos para que estes sejam o mais inofensivos para o ambiente possível, utilizando materiais recicláveis e não tóxicos tanto nos produtos como nas embalagens,

A D-Link recomenda que desligue os seus produtos D-Link quando estes não se encontrarem em utilização. Com esta acção ajudará a poupar energia e reduzir as emissões de CO2.

Para saber mais sobre os nossos produtos e embalagens responsáveis a nível ambiental visite www.dlinkgreen.com



Этот символ на продукте или упаковке означает, что в соответствии с нормами местного законодательства данный продукт в случае выхода из строя подлежит утилизации, и от него нельзя избавиться как от обычного бытового мусора. Отнесите устройство в ближайшую службу утилизации и переработки. При утилизации продукта и его упаковки таким образом обеспечивается защита окружающей среды и не наносится вред здоровью людей.

Забота D-Link об окружающей среде

Компания D-Link стремится максимально сократить негативное влияние своей деятельности на окружающую среду. Поэтому D-Link разрабатывает максимально экологичные продукты, используя легкоперерабатываемые и низкотоксичные материалы как для изготовления самих продуктов, так и их упаковки.

Кроме того, D-Link рекомендует отключать устройства, если они не используются. Это обеспечит энергосбережение и сократит выброс в атмосферу углекислого газа.

Более подробная информация об экологичной продукции D-Link доступна на сайте www.dlinkgreen.com

D-LINK GPL CODE STATEMENT

This D-Link product includes software code developed by third parties, including software code subject to the GNU General Public License ("GPL") or GNU Lesser General Public License ("LGPL"). As applicable, the terms of the GPL and LGPL, and information on obtaining access to the GPL code and LGPL code used in this product, are available to you at:

<http://tsd.dlink.com.tw/GPL.asp>

The GPL code and LGPL code used in this product are distributed WITHOUT ANY WARRANTY and is subject to the copyrights of one or more authors. For details, see the GPL code and the LGPL code for this product and the terms of the GPL and LGPL.

WRITTEN OFFER FOR GPL AND LGPL SOURCE CODE

Where such specific license terms entitle you to the source code of such software, D-Link will provide upon written request via email and/or traditional paper mail the applicable GPL and LGPL source code files via CD-ROM for a nominal cost to cover shipping and media charges as allowed under the GPL and LGPL.

Technical Support: For product support, please visit <http://support.dlink.com> for further assistance.

General Public License ("GPL") Inquiries: Please direct all GPL inquiries to the following email/address. Note that technical support inquiries will not be supported at the below address.

Email:

GPLCODE@DLink.com

Snail Mail:

Attn: GPLSOURCE REQUEST

D-Link Systems, Inc.

17595 Mt. Hermann Street

Fountain Valley, CA 92708

GNU GENERAL PUBLIC LICENSE

Version 2, June 1991

Copyright (C) 1989, 1991 Free Software Foundation, Inc.
51 Franklin Street, Fifth Floor, Boston, MA 02110-1301, USA

Everyone is permitted to copy and distribute verbatim copies of this license document, but changing it is not allowed.

PREAMBLE

The licenses for most software are designed to take away your freedom to share and change it. By contrast, the GNU General Public License is intended to guarantee your freedom to share and change free software—to make sure the software is free for all its users. This General Public License applies to most of the Free Software Foundation's software and to any other program whose authors commit to using it. (Some other Free Software Foundation software is covered by the GNU Library General Public License instead.) You can apply it to your programs, too.

When we speak of free software, we are referring to freedom, not price. Our General Public Licenses are designed to make sure that you have the freedom to distribute copies of free software (and charge for this service if you wish), that you receive source code or can get it if you want it, that you can change the software or use pieces of it in new free programs; and that you know you can do these things.

To protect your rights, we need to make restrictions that forbid anyone to deny you these rights or to ask you to surrender the rights. These restrictions translate to certain responsibilities for you if you distribute copies of the software, or if you modify it. For example, if you distribute copies of such a program, whether gratis or for a fee, you must give the recipients all the rights that you have. You must make sure that they, too, receive or can get the source code. And you must show them these terms so they know their rights.

We protect your rights with two steps: (1) copyright the software, and (2) offer you this license which gives you legal permission to copy, distribute and/or modify the software.

Also, for each author's protection and ours, we want to make certain that everyone understands that there is no warranty for this free software. If the software is modified by someone else and passed on, we want its recipients to know that what they have is not the original, so that any problems introduced by others will not reflect on the original authors' reputations.

Finally, any free program is threatened constantly by software patents. We wish to avoid the danger that redistributors of a free program will individually obtain patent licenses, in effect making the program proprietary. To prevent this, we have made it clear that any patent must be licensed for everyone's free use or not licensed at all.

The precise terms and conditions for copying, distribution and modification follow.

GNU GENERAL PUBLIC LICENSE TERMS AND CONDITIONS FOR COPYING, DISTRIBUTION AND MODIFICATION

0. This License applies to any program or other work which contains a notice placed by the copyright holder saying it may be distributed under the terms of this General Public License. The "Program", below, refers to any such program or work, and a "work based on the Program" means either the Program or any derivative work under copyright law: that is to say, a work containing the Program or a portion of it, either verbatim or with modifications and/or translated into another language. (Hereinafter, translation is included without limitation in the term "modification".) Each licensee is addressed as "you".

Activities other than copying, distribution and modification are not covered by this License; they are outside its scope. The act of running the Program is not restricted, and the output from the Program is covered only if its contents constitute a work based on the Program (independent of having been made by running the Program). Whether that is true depends on what the Program does.

1. You may copy and distribute verbatim copies of the Program's source code as you receive it, in any medium, provided that you conspicuously and appropriately publish on each copy an appropriate copyright notice and disclaimer of warranty; keep intact all the notices that refer to this License and to the absence of any warranty; and give any other recipients of the Program a copy of this License along with the Program.

You may charge a fee for the physical act of transferring a copy, and you may at your option offer warranty protection in exchange for a fee.

2. You may modify your copy or copies of the Program or any portion of it, thus forming a work based on the Program, and copy and distribute such modifications or work under the terms of Section 1 above, provided that you also meet all of these conditions:

- You must cause the modified files to carry prominent notices stating that you changed the files and the date of any change.
- You must cause any work that you distribute or publish, that in whole or in part contains or is derived from the Program or any part thereof, to be licensed as a whole to no charge to all third parties under the terms of this License.
- If the modified program normally reads commands interactively when run, you must cause it, when started running for such interactive use in the most ordinary way, to print or display an announcement including an appropriate copyright notice and a notice that there is no warranty (or else, saying that you provide a warranty) and that users may redistribute the program under these conditions, and telling the user how to view a copy of this License. (Exception: if the Program itself is interactive but does not normally print such an announcement, your work based on the Program is not required to print an announcement.)

These requirements apply to the modified work as a whole. If identifiable sections of that work are not derived from the Program, and can be reasonably considered independent and separate works in themselves, then this License, and its terms, do not apply to those sections when you distribute them as separate works. But when you distribute the same sections as part of a whole which is a work based on the Program, the distribution of the whole must be on the terms of this License, whose permissions for other licensees extend to the entire whole, and thus to each and every part regardless of who wrote it.

Thus, it is not the intent of this section to claim rights or contest your rights to work written entirely by you; rather, the intent is to exercise the right to control the distribution of derivative or collective works based on the Program.

In addition, mere aggregation of another work not based on the Program with the Program (or with a work based on the Program) on a volume of a storage or distribution medium does not bring the other work under the scope of this License.

3. You may copy and distribute the Program (or a work based on it, under Section 2) in object code or executable form under the terms of Sections 1 and 2 above provided that you also do one of the following:

- a) Accompany it with the complete corresponding machine-readable source code, which must be distributed under the terms of Sections 1 and 2 above on a medium customarily used for software interchange; or,
- b) Accompany it with a written offer, valid for at least three years, to give any third party, for a charge no more than your cost of physically performing source distribution, a complete machine-readable copy of the corresponding source code, to be distributed under the terms of Sections 1 and 2 above on a medium customarily used for software interchange; or,
- c) Accompany it with the information you received as to the offer to distribute corresponding source code. (This alternative is allowed only for noncommercial distribution and only if you received the program in object code or executable form with such an offer, in accord with Subsection b above.)

The source code for a work means the preferred form of the work for making modifications to it. For an executable work, complete source code means all the source code for all modules it contains, plus any associated interface definition files, plus the scripts used to control compilation and installation of the executable. However, as a special exception, the source code distributed need not include anything that is normally distributed (in either source or binary form) with the major components (compiler, kernel, and so on) of the operating system on which the executable runs, unless that component itself accompanies the executable.

If distribution of executable or object code is made by offering access to copy from a designated place, then offering equivalent access to copy the source code from the same place counts as distribution of the source code, even though third parties are not compelled to copy the source along with the object code.

4. You may not copy, modify, sublicense, or distribute the Program except as expressly provided under this License. Any attempt otherwise to copy, modify, sublicense or distribute the Program is void, and will automatically terminate your rights under this License. However, parties who have received copies, or rights, from you under this License will not have their licenses terminated so long as such parties remain in full compliance.

5. You are not required to accept this License, since you have not signed it. However, nothing else grants you permission to modify or distribute the Program or its derivative works. These actions are prohibited by law if you do not accept this License. Therefore, by modifying or distributing the Program (or any work based on the Program), you indicate your acceptance of this License to do so, and all its terms and conditions for copying, distributing or modifying the Program or works based on it.

6. Each time you redistribute the Program (or any work based on the Program), the recipient automatically receives a license from the original licensor to copy, distribute or modify the Program subject to these terms and conditions. You may not impose any further restrictions on the recipients' exercise of the rights granted herein. You are not responsible for enforcing compliance by third parties to this License.

7. If, as a consequence of a court judgment or allegation of patent infringement or for any other reason (not limited to patent issues), conditions are imposed on you (whether by court order, agreement or otherwise) that contradict the conditions of this License, they do not excuse you from the conditions of this License. If you cannot distribute so as to satisfy simultaneously your obligations under this License and any other pertinent obligations, then as a consequence you may not distribute the Program at all. For example, if a patent license would not permit royalty-free redistribution of the Program by all those who receive copies directly or indirectly through you, then the only way you could satisfy both it and this License would be to refrain entirely from distribution of the Program.

If any portion of this section is held invalid or unenforceable under any particular circumstance, the balance of the section is intended to apply and the section as a whole is intended to apply in other circumstances.

It is not the purpose of this section to induce you to infringe any patents or other property right claims or to contest validity of any such claims; this section has the sole purpose of protecting the integrity of the free software distribution system, which is implemented by public license practices. Many people have made generous contributions to the wide range of software distributed through that system in reliance on consistent application of that system; it is up to the author/donor to decide if he or she is willing to distribute software through any other system and a licensee cannot impose that choice.

This section is intended to make thoroughly clear what is believed to be a consequence of the rest of this License.

8. If the distribution and/or use of the Program is restricted in certain countries either by patents or by copyrighted interfaces, the original copyright holder who places the Program under this License may add an explicit geographical distribution limitation excluding those countries, so that distribution is permitted only in or among countries not thus excluded. In such case, this License incorporates the limitation as if written in the body of this License.

9. The Free Software Foundation may publish revised and/or new versions of the General Public License from time to time. Such new versions will be similar in spirit to the present version, but may differ in detail to address new problems or concerns.

Each version is given a distinguishing version number. If the Program specifies a version number of this License which applies to it and "any later version", you have the option of following the terms and conditions either of that version or of any later version published by the Free Software Foundation. If the Program does not specify a version number of this License, you may choose any version ever published by the Free Software Foundation.

10. If you wish to incorporate parts of the Program into other free programs whose distribution conditions are different, write to the author to ask for permission. For software which is copyrighted by the Free Software Foundation, write to the Free Software Foundation; we sometimes make exceptions for this. Our decision will be guided by the two goals of preserving the free status of all derivatives of our free software and of promoting the sharing and reuse of software generally.

NO WARRANTY

11. BECAUSE THE PROGRAM IS LICENSED FREE OF CHARGE, THERE IS NO WARRANTY FOR THE PROGRAM, TO THE EXTENT PERMITTED BY APPLICABLE LAW. EXCEPT WHEN OTHERWISE STATED IN WRITING THE COPYRIGHT HOLDERS AND/OR OTHER PARTIES PROVIDE THE PROGRAM "AS IS" WITHOUT WARRANTY OF ANY KIND, EITHER EXPRESSED OR IMPLIED, INCLUDING, BUT NOT LIMITED TO, THE IMPLIED WARRANTIES OF MERCHANTABILITY AND FITNESS FOR A PARTICULAR PURPOSE. THE ENTIRE RISK AS TO THE QUALITY AND PERFORMANCE OF THE PROGRAM IS WITH YOU. SHOULD THE PROGRAM PROVE DEFECTIVE, YOU ASSUME THE COST OF ALL NECESSARY SERVICING, REPAIR OR CORRECTION.

12. IN NO EVENT UNLESS REQUIRED BY APPLICABLE LAW OR AGREED TO IN WRITING WILL ANY COPYRIGHT HOLDER, OR ANY OTHER PARTY WHO MAY MODIFY AND/OR REDISTRIBUTE THE PROGRAM AS PERMITTED ABOVE, BE LIABLE TO YOU FOR DAMAGES, INCLUDING ANY GENERAL, SPECIAL, INCIDENTAL OR CONSEQUENTIAL DAMAGES ARISING OUT OF THE USE OR INABILITY TO USE THE PROGRAM (INCLUDING BUT NOT LIMITED TO LOSS OF DATA OR DATA BEING RENDERED INACCURATE OR LOSSES SUSTAINED BY YOU OR THIRD PARTIES OR A FAILURE OF THE PROGRAM TO OPERATE WITH ANY OTHER PROGRAMS), EVEN IF SUCH HOLDER OR OTHER PARTY HAS BEEN ADVISED OF THE POSSIBILITY OF SUCH DAMAGES.

END OF TERMS AND CONDITIONS

HOW TO APPLY THESE TERMS TO YOUR NEW PROGRAMS

If you develop a new program, and you want it to be of the greatest possible use to the public, the best way to achieve this is to make it free software which everyone can redistribute and change under these terms.

To do so, attach the following notices to the program. It is safest to attach them to the start of each source file to most effectively convey the exclusion of warranty; and each file should have at least the "copyright" line and a pointer to where the full notice is found.

<one line to give the program's name and a brief idea of what it does.>

Copyright (C) <year> <name of author>

This program is free software; you can redistribute it and/or modify it under the terms of the GNU General Public License as published by the Free Software Foundation; either version 2 of the License, or (at your option) any later version.

This program is distributed in the hope that it will be useful, but WITHOUT ANY WARRANTY; without even the implied warranty of MERCHANTABILITY or FITNESS FOR A PARTICULAR PURPOSE. See the GNU General Public License for more details.

You should have received a copy of the GNU General Public License along with this program; if not, write to the Free Software Foundation, Inc., 51 Franklin Street, Fifth Floor, Boston, MA 02110-1301, USA.

Also add information on how to contact you by electronic and paper mail.

If the program is interactive, make it output a short notice like this when it starts in an interactive mode:

Gnomovision version 69, Copyright (C) year name of author Gnomovision comes with ABSOLUTELY NO WARRANTY; for details type `show w`.

This is free software, and you are welcome to redistribute it under certain conditions; type `show c` for details.

The hypothetical commands `show w` and `show c` should show the appropriate parts of the General Public License. Of course, the commands you use may be called something other than `show w` and `show c`; they could even be mouse-clicks or menu items--whatever suits your program.

You should also get your employer (if you work as a programmer) or your school, if any, to sign a "copyright disclaimer" for the program, if necessary. Here is a sample; alter the names:

Yoyodyne, Inc., hereby disclaims all copyright interest in the program `Gnomovision' (which makes passes at compilers) written by James Hacker.

<signature of Ty Coon>, 1 April 1989
Ty Coon, President of Vice

This General Public License does not permit incorporating your program into proprietary programs. If your program is a subroutine library, you may consider it more useful to permit linking proprietary applications with the library. If this is what you want to do, use the GNU Library General Public License instead of this License.

Notes

Notes

Notes

Notes

Notes

D-Link[®]



Ver. 2.00(WW)_130x183
2017/06/28
0420123-DL