

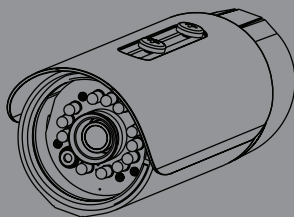


## Quick Installation Guide

### HD IR Outdoor Network Camera

This document will guide you through the basic installation process for your new D-Link Network Camera.

**DCS-7110**



---

# Installation

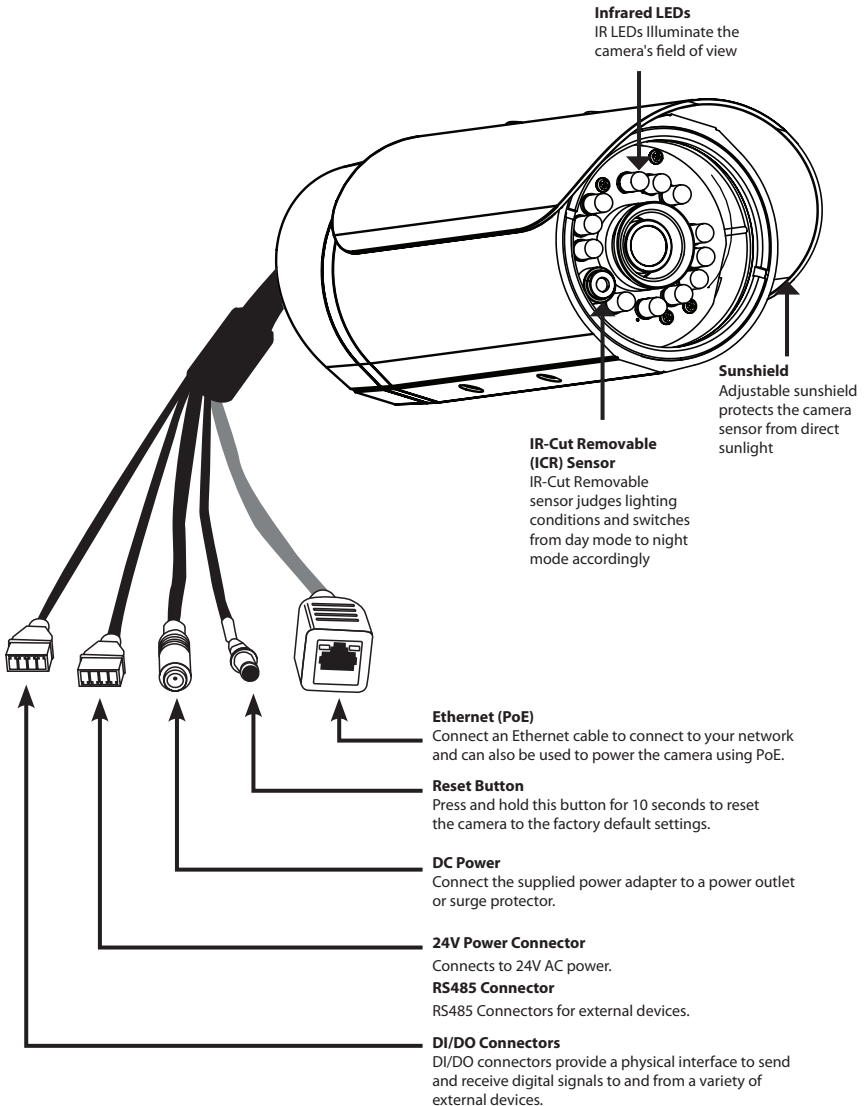
This installation guide provides basic instructions for installing the DCS-7110 Network Camera on your network. For additional information about how to use the camera, please see the User Manual which is available on the CD include in this package or from the D-Link website.

## Package Contents

- DCS-7110 HD IR Outdoor Network Camera
- Mounting Bracket
- User Manual and Software on CD-ROM
- CAT5 Ethernet Cable
- Power Adapter
- Quick Installation Guide

If any of the above items are missing, please contact your reseller.

# Hardware Overview

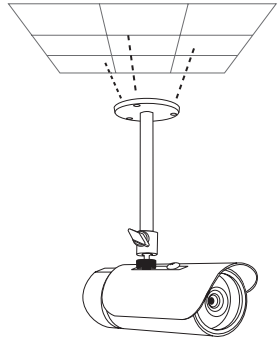


---

# Hardware Mounting

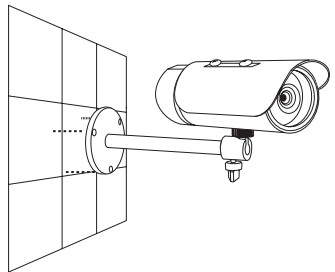
## Ceiling Mount

1. Locate an area on the ceiling which is capable of supporting the weight of the camera.
2. Mark and drill three pilot holes aligned to the screw holes at the base of the mounting bracket.
3. Insert the plastic anchors into the pilot holes, and align the holes at the base of the camera bracket with the plastic anchors.
4. Once aligned, insert the provided screws through the holes at the base of the camera bracket.
5. Use a screwdriver to tighten and secure the bracket into place.
6. Attach the camera enclosure to the mounting bracket. Align the camera to the correct field of view and tighten the thumbscrew to lock it into place.
7. The camera cables can be installed through a separate large hole drilled in the ceiling, or using an external cable conduit.



## Wall Mount

1. Locate an area on the wall which is capable of supporting the weight of the camera.
2. Mark and drill three pilot holes aligned to the screw holes at the base of the mounting bracket.
3. Insert the plastic anchors into the pilot holes, and align the holes at the base of the camera bracket with the plastic anchors.
4. Once aligned, insert the provided screws through the holes at the base of the camera bracket.
5. Use a screwdriver to tighten and secure the bracket into place.
6. Attach the camera enclosure to the mounting bracket. Align the camera to the correct field of view and tighten the thumbscrew to lock it into place.
7. The camera cables can be installed through a separate large hole drilled in the wall, or using an external cable conduit.

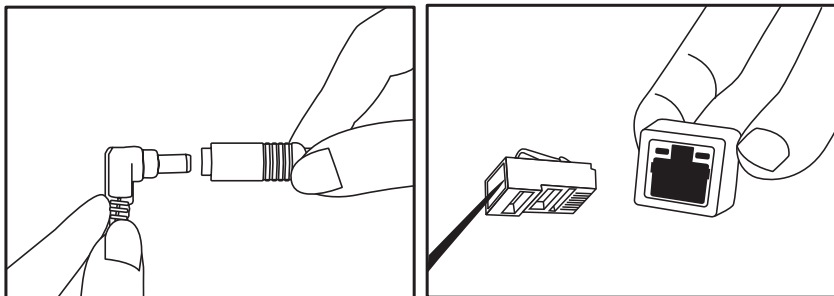


---

# Cable Connections

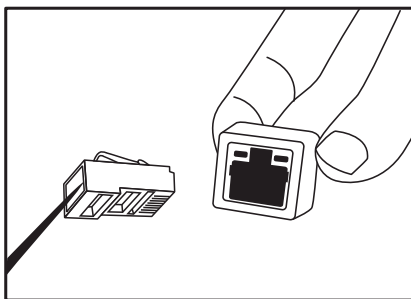
## Basic Connection (without PoE)

1. Connect the camera to your switch or router via Ethernet cable.
2. Connect the power cable from the camera to the supplied power adapter.
3. Connect the supplied power adapter to a power outlet.



## Power over Ethernet (PoE) Connection

If using a PoE switch or router, connect the network camera via Ethernet cable. PoE will transmit both power and data over a single cable.



**Note:** Once power has been established, the LED will turn red. When the device has obtained an IP address and is accessible, the LED will turn green.

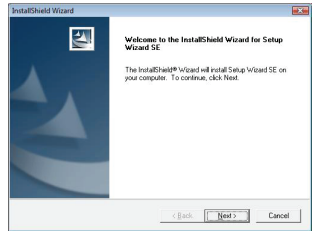
# Configuration

Insert the DCS-7110 CD into your computer's CD-ROM drive to begin the installation. If the Autorun function on your computer is disabled, or if the D-Link Launcher fails to start automatically, click **Start > Run**. Type **D:\autorun.exe**, where D: represents the drive letter of your CD-ROM drive.

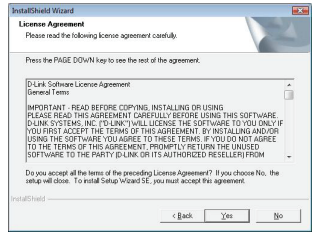
Click **Setup Wizard** to begin the installation.



After clicking Setup Wizard, the following window will open. Click **Next** to continue.

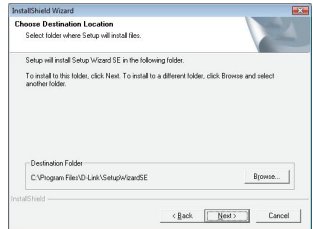


Click **Yes** to accept the License Agreement.

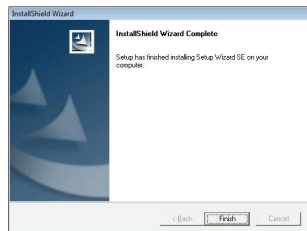


Select the location to install the Wizard and click Next to continue.

**Note:** The installation may take several minutes to finish.

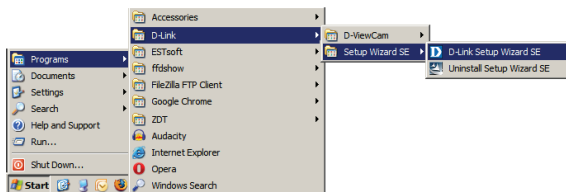


Click **Finish** to complete the installation.



Click on the **D-Link Setup Wizard SE** icon that was created in your Windows Start menu.

### Start > D-Link > Setup Wizard SE



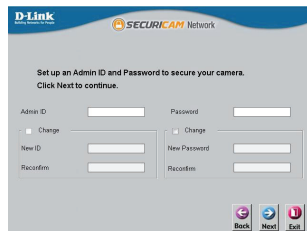
The Setup Wizard will appear and display the MAC address and IP address of your camera(s). If you have a DHCP server on your network, a valid IP Address will be displayed. If your network does not use a DHCP server, the network camera's default static IP **192.168.0.20** will be displayed.

Click the **Wizard** button to continue.



Enter the Admin ID and password. When logging in for the first time, the default Admin ID is **admin** with the password left blank.

Click **Next** to continue.



Select **DHCP** if your camera obtains an IP address automatically when it boots up. Select static IP if the camera will use the same IP address each time it is started.

Click **Next** to continue.

The screenshot shows the 'Set IP Address' configuration screen. It features a 'DHCP' section with a 'Static IP' option selected. Below this are input fields for IP Address (192.168.1.105), Subnet Mask (255.255.255.0), Default Gateway (192.168.1.1), Primary DNS (192.168.1.1), and Secondary DNS (192.168.1.1). At the bottom right, there are three buttons: 'Back' (left arrow), 'Next' (right arrow), and 'Exit' (power icon).

Take a moment to confirm your settings and click **Restart**.

The screenshot shows the 'Admin ID' configuration screen. It includes input fields for Admin ID (admin), Password, IP Address (192.168.0.102), Subnet Mask (255.255.255.0), Primary DNS (192.168.0.1), and Secondary DNS (192.168.0.1). A message at the bottom states: 'The Setup Wizard has completed. Click on 'Back' to modify your settings. Click 'Restart' to save your current settings and reboot the Internet Camera.' At the bottom right, there are two buttons: 'Back' (left arrow) and 'Restart' (refresh icon).

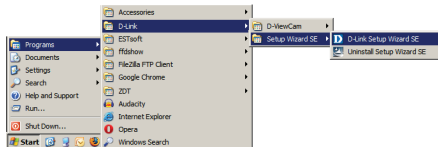


---

# Viewing Camera via Web Browser

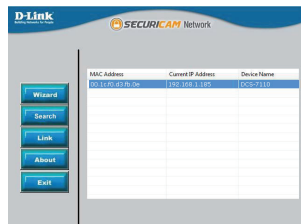
Click on the **D-Link Setup Wizard SE** icon that was created in your Windows Start menu.

**Start > D-Link > Setup Wizard SE**

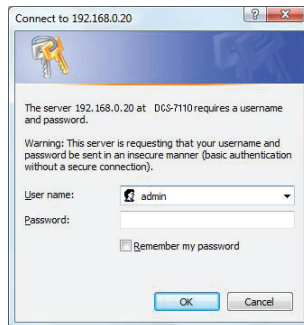


Select the camera and click the **Link** button to access the web configuration.

The Setup Wizard will automatically open your web browser to the IP address of the camera.

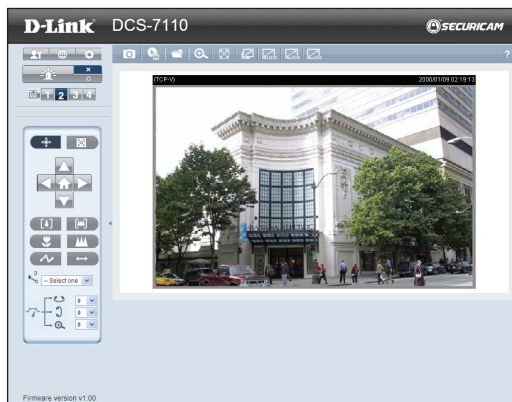


Enter **admin** as the default username and leave the password blank. Click **OK** to continue.



---

This section shows your camera's live video. You can select your video profile and view or operate the camera. For additional information about web configuration, please refer to the user manual included on the CD-ROM or the D-Link website.



Please refer to the user manual for more information, configuration options, and advanced features.

---

# Notes

---

# Technical Support

D-Link's website contains the latest user documentation and software updates for D-Link products.

U.S. and Canadian customers can contact D-Link Technical Support through our website or by phone.

## United States

### Telephone

(877) 354-6555

### World Wide Web

<http://support.dlink.com>

## Canada

### Telephone

(877) 354-6560

### World Wide Web

<http://support.dlink.ca>

# D-Link<sup>®</sup>

Version 1.0

March 7, 2011

625013500G

©2011 D-Link Corporation/D-Link Systems, Inc. All rights reserved. D-Link and the D-Link logo are registered trademarks of D-Link Corporation or its subsidiaries in the United States and/or other countries. Other trademarks or registered trademarks are the property of their respective owners. Product specifications, size and shape are subject to change without notice, and actual product appearance may differ from that depicted on the package. Visit [dlink.com](http://dlink.com) (US) or [dlink.ca](http://dlink.ca) (Canada) for more details.