

## Contents of Package:

DFE-530TX+ Fast Ethernet Adapter

Quick Install Guide

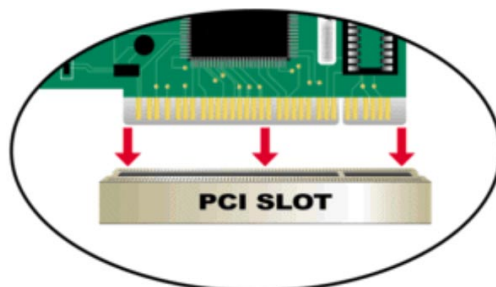
CD-ROM, which includes driver software

*If any of the above items are missing, please contact your reseller.*

**TURN OFF the computer and  
unplug the power cord.**

**1**

## Installing the DFE-530TX+ into the computer's PCI slot



*Note: To avoid static electric charges, please touch an unpainted screw on the outside of the power supply before installing or working with the DFE-530TX+.*

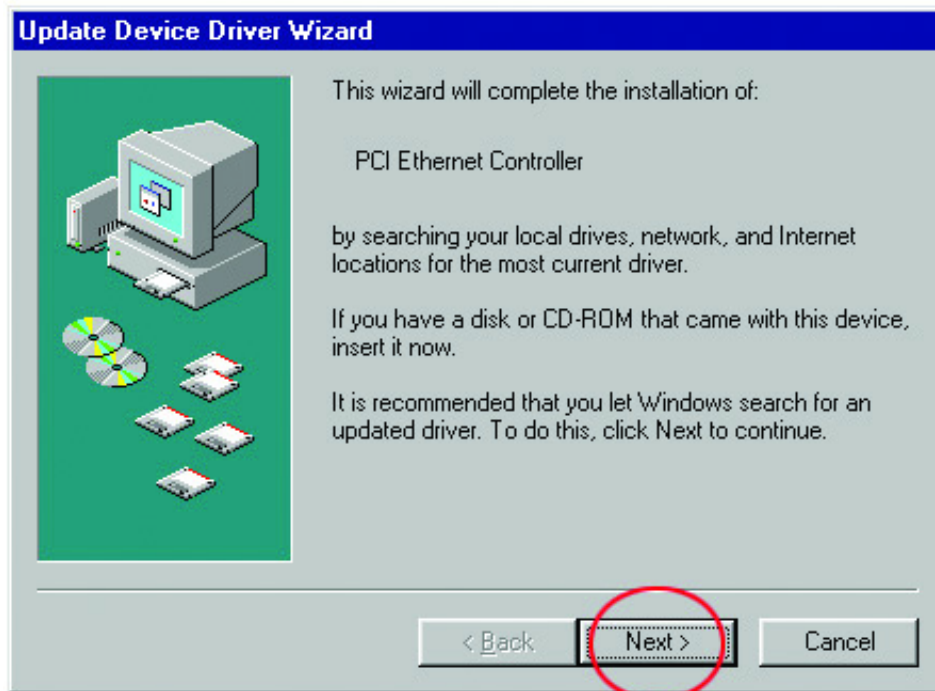
- **Turn off** your computer and **unplug** the power cord.
- **Remove** the back cover of your computer. (Refer to your computer's manual if needed.)
- **Locate** an available PCI slot. PCI slots are usually white or cream colored.
- **Remove** the backplate (the small piece of metal that covers the opening for the PCI card on the back cover that you just removed.)
- **Insert** the DFE-530TX+ carefully and firmly into the PCI slot.
- **Secure** the DFE-530TX+ with the screw from the backplate.

- **Replace** your computer's cover.

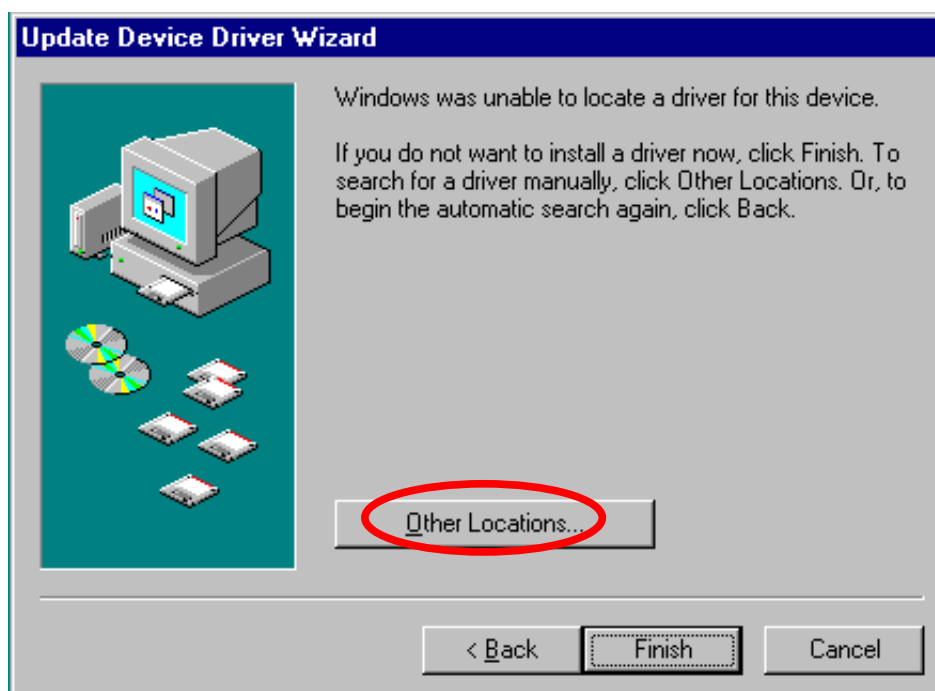
# 2

## Installing the Drivers

- **TURN ON** the computer.
- **Insert the CD** that came with your purchase of the DFE-530TX+ into the CD-ROM drive.

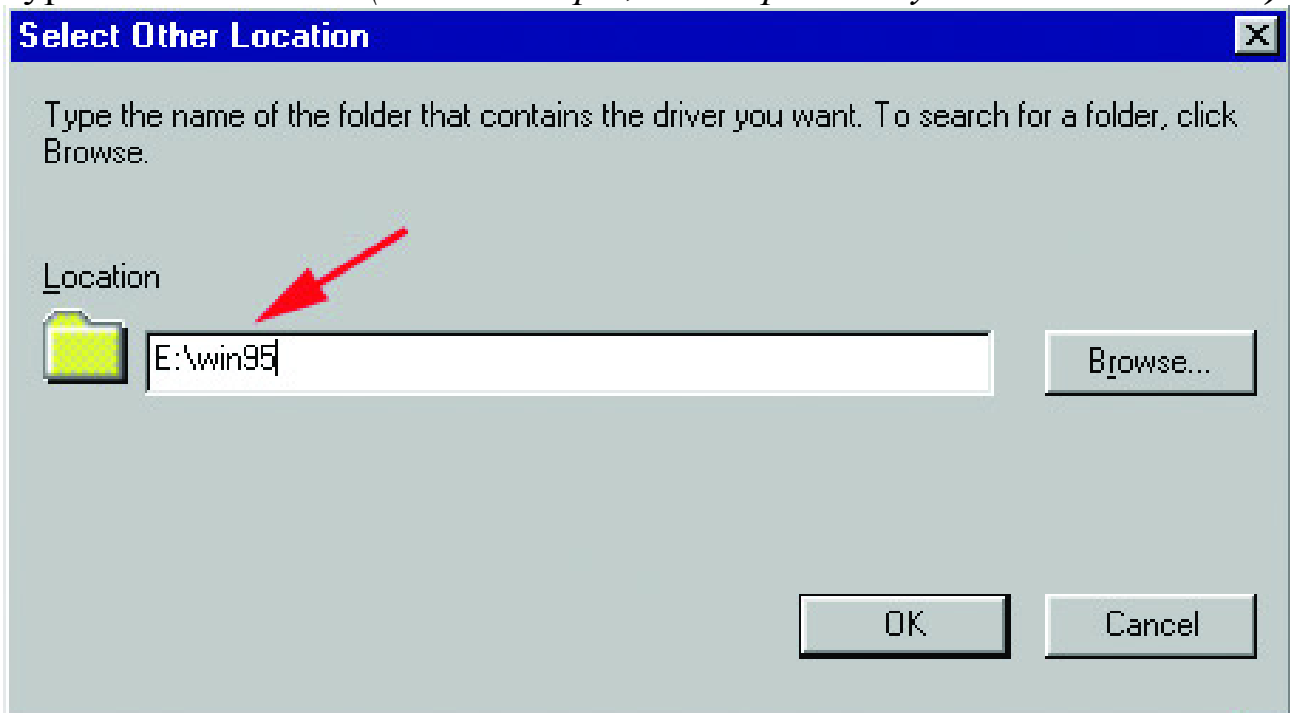


**Click Next**



**Click “Other Locations”**

Type in “E:\win95.” (In the example, “E” represents your CD-ROM drive.)



Click OK

Click “**Finish**” to complete the installation.  
(If Windows prompts you to “**Reboot**,”  
click “**Yes**” in the prompt window to restart your computer.)

## CONTACTING TECHNICAL SUPPORT

You can find the most recent software and user documentation on the **D-Link** website.

**D-Link** provides free technical support for customers within the United States for the duration of the warranty period on this product.

U.S. customers can contact **D-Link** technical support through our web site, e-mail, or by phone.

United States technical support is available Monday through Friday from 6:00 a.m. to 6:00 p.m. (PST.)

Web: <http://www.dlink.com>

Email: [support@dlink.com](mailto:support@dlink.com)

Phone: 949-788-0805 (option #4)

*If you are a customer residing outside of the United States, please refer to the list of **D-Link** locations that is included in the User's manual.*

**D-Link**<sup>®</sup>  
Building Networks for People  
Printed in Taiwan