



Firmware Version: v 1.10.013
Prom Code Version: v 1.00.002
Published: August 29, 2014

These release notes include important information about D-Link switch firmware revisions. Please verify that these release notes are correct for your switch:

- If you are installing a new switch, please check the hardware version on the device label; make sure that your switch meets the system requirement of this firmware version. Please refer to [Revision History and System Requirement](#) for detailed firmware and hardware matrix.
- If the switch is powered on, you can check the hardware version by typing “show switch” command or by checking the device information page on the web graphic user interface.
- If you plan to upgrade to the new firmware release, please refer to the [Upgrade Instructions](#) for the correct firmware upgrade procedure.

For more detailed information regarding our switch products, please refer to [Related Documentation](#).

You can also download the switch firmware, D-View modules and technical documentation from <http://tsd.dlink.com.tw>.

Content:

Revision History and System Requirement:	2
Upgrade Instructions:	2
Upgrade firmware by CLI (serial port).....	2
Upgrade firmware by Web-UI	3
New Features:.....	5
Changes of MIB & D-View Module:	5
Changes of Command Line Interface:	6
Known Issues:	6
Related Documentation:	7

Revision History and System Requirement:

Firmware Version	Date	Model	Hardware Version
Runtime: v1.10.013 PROM: v1.00.002	29-Aug-14	DGS-3000-10TC	A1
		DGS-3000-24TC	A1
		DGS-3000-26TC	A1
Runtime: v1.01.005 PROM: v1.00.001	16-Jul-13	DGS-3000-10TC	A1
		DGS-3000-24TC	A1
		DGS-3000-26TC	A1
Runtime: v1.00.021 PROM: v1.00.001	4-Apr-13	DGS-3000-10TC	A1
		DGS-3000-26TC	A1

Upgrade Instructions:

D-Link switches support firmware upgrade via TFTP server. You can download the firmware from D-Link web site <http://tsd.dlink.com.tw>, and copy the downloaded firmware to the TFTP server folder. Please make sure that the TFTP server is accessible from the switch via networks.

Upgrade firmware by CLI (serial port)

Connect a workstation to the switch console port and run any terminal program that can emulate a VT-100 terminal. The switch serial port default settings are as follows:

- ♦ Baud rate: **115200**
- ♦ Data bits: **8**
- ♦ Parity: **None**
- ♦ Stop bits: **1**

The switch will prompt the user to enter his/her username and password. It should be noted that upon the initial connection, there is no username and password by default.

To upgrade the switch firmware, execute the following commands:

Command	Function
download [firmware_fromTFTP [<ipaddr> <ipv6addr>] src_file <path_filename 64> {[unit <unit_id> all]} {dest_file <pathname 64>}]	Download firmware file from the TFTP server to the switch.
config firmware image {unit <unit_id>} <path_filename 64> boot_up	Change the boot up image file.
dir {{unit <unit_id>} <drive_id>} {<pathname 64>}	Display the information of current boot image and configuration.
reboot	Reboot the switch.

Example:

- DGS-3000-26TC:admin#download firmware_fromTFTP 172.17.5.48 src_file Run100021.had dest_file Run100021.had

Command: download firmware_fromTFTP 172.17.5.48 src_file Run100021.had dest_file Run100021.had

Connecting to server..... Done.

Download firmware..... Done. Do not power off!

Please wait, programming flash..... Done.
- DGS-3000-26TC:admin#config firmware image c:/Run100021.had boot_up

Command: config firmware image c:/Run100021.had boot_up

Success.

3. DGS-3000-26TC:admin#dir

Command: dir

Directory of /c:

Idx	Info	Attr	Size	Update Time	Name
1	RUN(*)	-rw-	5491536	2000/01/01 00:41:03	Run100021.had
2	CFG(*)	-rw-	31142	2000/01/01 02:19:40	config.cfg
3		d---		2000/01/01 00:00:16	system

29618 KB total (24127 KB free)

(*) -with boot up info

(b) -with backup info

4. DGS-3000-26TC:admin#reboot

Command: reboot

Are you sure you want to proceed with the system reboot?(y/n) y

Please wait, the switch is rebooting...

Boot Procedure

V1.00.001

Power On Self Test 100 %

MAC Address : 00-40-05-31-20-00

H/W Version : A1

Please Wait, Loading V1.00.021 Runtime Image 100 %

UART init 100 %

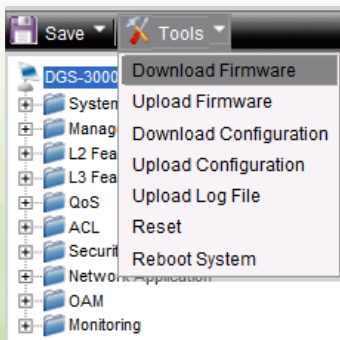
Starting runtime image

Device Discovery 100 %

Configuration init 100 %

Upgrade firmware by Web-UI

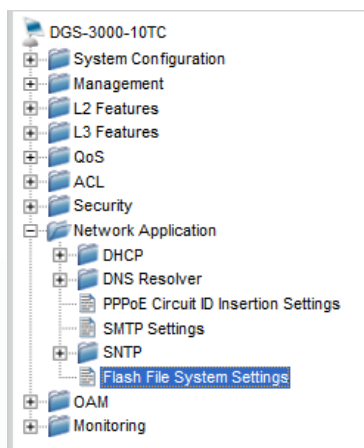
1. Connect a workstation installed with java SE runtime environment to any switch port of the device.
2. Open the web browser from the workstation and enter the IP address of the switch. The switch's default IP address is **10.90.90.90**.
3. Enter administrator's username and password when prompted. It should be noted that the username and password are blank by default.
4. To update switch's firmware or configuration file, select **Tools > Download Firmware** from the banner.



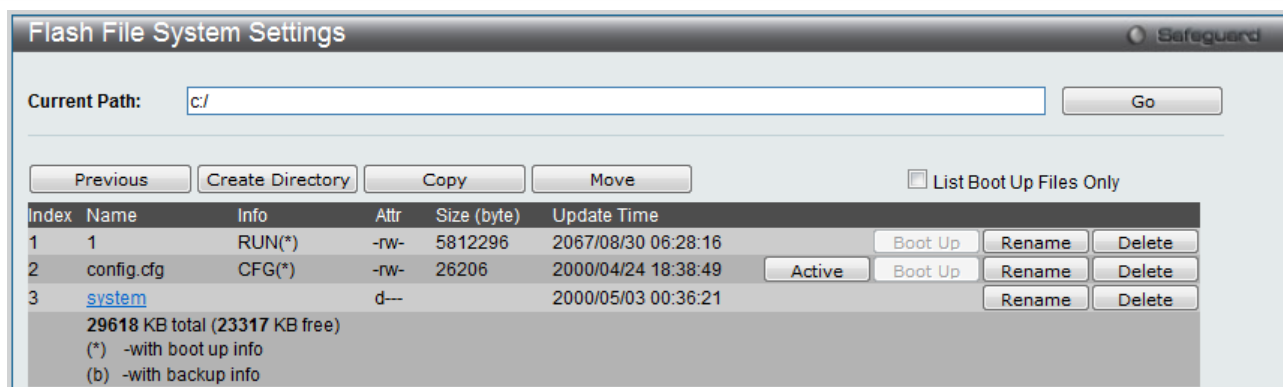
5. Enter the TFTP Server IP address.
6. Enter the name of the firmware file located on the TFTP server.
7. Enter the destination path and the desired file name.
8. Click **Download** button.

9. Wait until the Current Status displays **Done** and the Percentage shows **100%**.

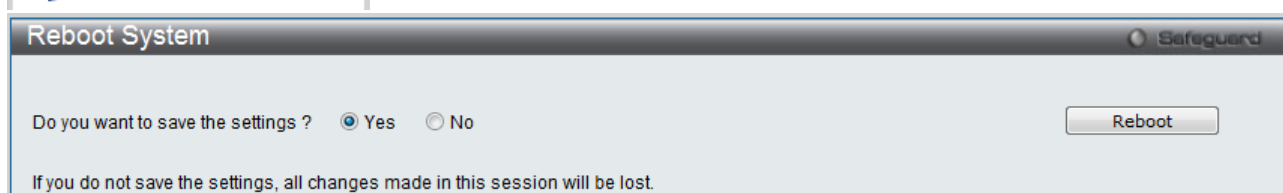
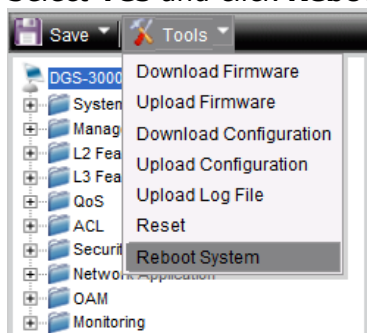
10. To select the boot up image used for next reboot, click **Network Application > Flash File System Settings** in the function tree and then click the **C:** drive name. When you see the files list, click corresponding **Boot Up** button to specify the firmware that will be used for next and subsequent boot up.



Root	Media Type	Size (MB)	Label	File System Type
C:	Flash	28		FFS



11. To reboot the switch, select **Tools > Reboot System** from the banner.
12. Select **Yes** and click **Reboot** button to reboot the switch.



New Features:

Firmware Version	New Features
v1.10.013	<ol style="list-style-type: none"> 1. DHCP server screening, DHCP relay, ARP spoofing, FTP client and JWAC support IPv6 2. SIM, NTP, SMTP and NLB support IPv6 3. ERPS support multiple/sub ring 4. RSPAN 5. Supper VLAN 6. Static route 7. Congestion control 8. Web-based access control 9. Compound authentication 10. Y.1731 OAM 11. Remote copy protocol (RCP) 12. DHCP server
v1.01.005	Support one new model, DGS-3000-24TC.
v1.00.021	First release. For supported features, please refer to the product specification and manuals for details.

Changes of MIB & D-View Module:

The new features of MIB file are also included in the corresponding D-View module. Please

download the D-View module from <http://tsd.dlink.com.tw>. For detailed changes of MIB content, please refer to the modification history in each MIB file.

Firmware Version	MIB File	New Features
v1.10.013	ERPS.mib	Support multiple/sub ring
	McastVLAN.mib	ISM VLAN supports MLDv1/v2 snooping
	SuperVLAN.mib	Super VLAN
	L3mgmtDGS3000-10TC.mib L3mgmtDGS3000-24TC.mib L3mgmtDGS3000-26TC.mib	Support static route, DHCPv6 client
	sred.mib	Congestion control
	NDSpoofingPrevention.mib	Support ARP spoofing prevention v6
	wac.mib	Web-based Access Control
	Jwac.mib	Support IPv6 JWAC
	mba.mib	MAC-based access control (MAC)
	Auth.mib	Compound authentication
	CFMExtension.mib	Y.1731 Ethernet OAM
	DDM.mib	Update DDM behavior
	DHCPv6_Relay.mib	DHCPv6 Relay Agent
	IPv6StaticRoute.mib	IPv6 Static Route
	DHCPv6Server.mib DHCPv6Server.mib	DHCP Server
	Filter.mib	DHCPv6 Server Screening
	RCP.mib	Remote Copy Protocol (RCP)
	smtp.mib	SMTP
	DHCPRelay.mib	DHCP relay
	Genmgmt.mib	FTP client over IPv6
	SingleIP.mib	Support IPv6 virtual stacking
v1.01.005	L2mgmtDGS3000-24TC.mib L3mgmtDGS3000-24TC.mib SWPRIMGMT-DGS3000-MIB.mib	Support new model, DGS-3000-24TC
v1.00.021	First release. Please refer to datasheet for supported SNMP MIB files.	

Changes of Command Line Interface:

The section below only shows command line changes that may bring backward compatibility issues with configuration settings for previous version of firmware. Any new feature commands that do not have backward compatibility issues are not included in the below section.

Firmware Version	Changes
v1.10.013	None
v1.01.005	None
v1.00.021	First release

Problem Fixed:

Firmware Version	Problems Fixed
------------------	----------------

v1.10.013	<ol style="list-style-type: none"> 1. Packet counter does not work correctly on 10G ports of DGS-3000-26TC when the link speed linked at 1G. (DRU20131108000004) 2. When DHCP relay enabled, DHCP packets were dropped by DGS-3000 if DHCP server belongs to different subnet. (DRU20131111000005) 3. The DDM function displayed incorrect Rx Power value. (DI20140530000004) 4. ARP packets do not follow Traffic Segmentation feature's behavior when IMPB is also enabled. (DRU20130729000002)
v1.01.005	None.

* D-Link tracking number is enclosed in ()

Known Issues:

Firmware Version	Issues	Workaround
v1.10.013	1. It cannot upgrade to v1.10.013 from v1.01 or earlier firmware version.	Please upgrade to v1.10.00 first before upgrading to v1.10.013.
	2. 802.1X port base mode must be reconfigured if user upgrades firmware to v.1.10.013 from v1.01 or earlier firmware version.	Please use "config authentication ports <portlist> auth_mode port_based" to reconfigure.
	3. ARP entries change from 1024 (software-base) to 458 (hardware-base)	None. It will not affect operation.
v1.01.005	None	None
v1.00.021	None	None

Related Documentation:

- ♦ DGS-3000 Series Web UI Reference Guide Release 1.10
- ♦ DGS-3000 Series CLI Reference Guide Release 1.10
- ♦ DGS-3000 Series Hardware Installation Guide Release 1.10