

Quick Install Guide



Powerline AV+ Mini Starter Kit

DHP-309AV

Package Contents



Two PowerLine AV+ Mini Adapters



Two Ethernet Cables

If any of the above items are missing, please contact your reseller.

LEDs (from top to bottom)



Power LED - A solid light indicates that the device is receiving electrical power.



PowerLine LED- A solid light indicates that the device is connected to the PowerLine Network.

LED Colors:

Green - Link rate/quality is the best.

Amber - Link rate/quality is better.

Red - Link rate/quality is good.



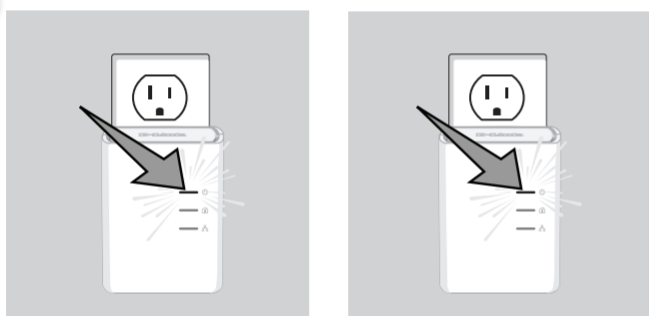
Ethernet LED - A solid light indicates that the Ethernet port is linked and will blink during data transmission.

Installation

1

Room 1

Room 2



Adapter 1

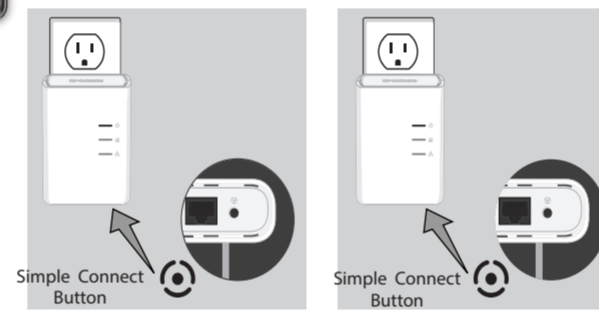
Adapter 2

Plug one PowerLine AV+ Mini Adapter into an AC wall outlet. Verify that the Power LED is lit. If not, insert into another outlet. Now plug the other PowerLine AV + Mini Adapter into an AC wall outlet. Verify that the Power LED is lit.

2

Room 1

Room 2



Adapter 1

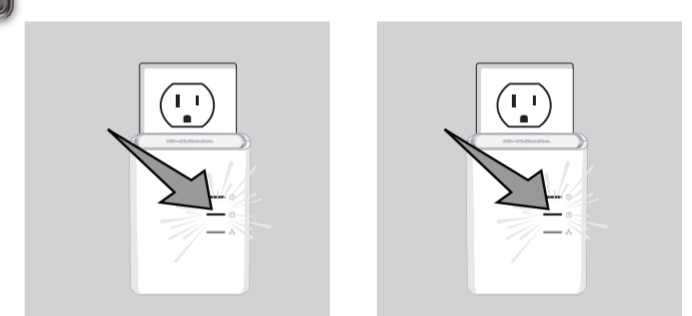
Adapter 2

To secure your network, press the Simple Connect button for 2 seconds on one of the adapters. The Power LED will start to blink. Then, within 2 minutes, press the Simple Connect button on the other adapter for 2 seconds.

3

Room 1

Room 2



Adapter 1

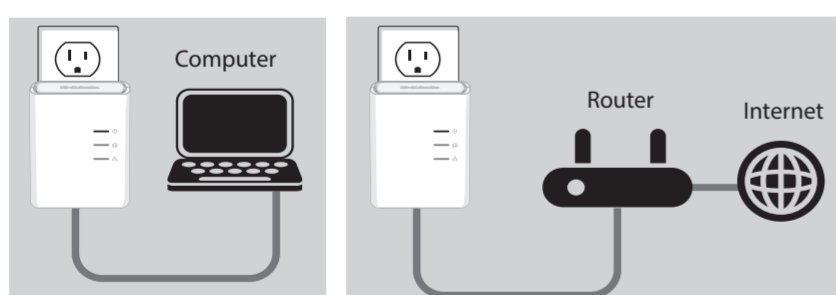
Adapter 2

Once the Power LEDs stop blinking, verify that the PowerLine LED is lit on both adapters. This indicates that your adapters are properly connected to each other. If the LED is not lit, insert one or both adapters into different outlets and repeat step 2.

4

Room 1

Room 2



Adapter 1

Adapter 2

You may now attach Ethernet devices such as a router, computer, or game console via an Ethernet cable. With the Ethernet device powered on, verify that the Ethernet LED is lit on the adapters to indicate a good connection. Setup is complete.

Installation Tips

1. For best results, use in a standard wall outlet without any other products plugged into the same outlet. Connecting this product to a power strip or a surge protector may adversely affect the performance of this product.
2. Avoid using the PowerLine adapters in an electrical outlet that is located near an appliance that uses a lot of power such as a washer, dryer, refrigerator, microwave, hair dryer, or air conditioning system.
3. Plug the PowerLine adapters in the same room in order to verify whether your home's electrical wiring is suitable. Once configured you may place the PowerLine adapters to the location of your choice.

Technical Support

Having trouble installing your new product? D-Link's website contains the latest user documentation and software updates for D-Link products.

U.S. and Canadian customers can contact D-Link Technical Support through our website or by phone.

United States
Telephone: (877) 453-5465
Internet: <http://support.dlink.com>

Canada
Telephone: (800) 361-5265
Internet: <http://support.dlink.ca>

©2012 D-Link Corporation/D-Link Systems, Inc. All rights reserved. D-Link and the D-Link logo are registered trademarks of D-Link Corporation or its subsidiaries in the United States and/or other countries. Other trademarks or registered trademarks are the property of their respective owners. Maximum throughput based on theoretical transmission PHY rate. Actual data throughput will vary. Network conditions and environmental factors, including volume of traffic and network overhead, may lower actual data throughput rate. Interference from devices that emit electrical noise, such as vacuum cleaners and hair dryers, may adversely affect the performance of this product. This product may interfere with devices such as lighting systems that have a dimmer switch, short wave radios, or other powerline devices that do not follow the HomePlug AV standard. Product specifications, size and shape are subject to change without notice, and actual product appearance may differ from that depicted on the package. Visit dlink.com (US) or dlink.ca (Canada) for more details.