

*Fast Access to Your PCs
Through One Console*

DKVM-16



- 16 Ports to Connect Your Server Computers
- Daisy Chain Port Allows Control of Up to 128 Computers
- Password Protected Security
- Easy to Use On-Screen Display
- Convenient Hot Keys and Push Buttons for Switching Between Computers

Business KVM Solutions

16-Port KVM Switch

The D-Link DKVM-16 is a Keyboard, Video and Mouse KVM switch that allows you to control up to 16 server computers using one keyboard, mouse, and monitor. It is easy to use, powerful, and scalable. Each DKVM-16 port has a dedicated microprocessor to intelligently manage port traffic and allows simultaneous boot-ups for all attached PCs. The advanced microprocessor technology also saves CAPSLOCK, NUMLOCK, and SCROLL LOCK status for each PC. Two control buttons located on the front panel gives you one touch access to your attached PCs and the user-friendly on-screen display menu allows you to configure your DKVM-16 switch's settings. The daisy chain port allows up to 8 DKVM-16 KVM switches to

be stacked together for controlling as many as 128 computers. Featuring hot-plug, auto-scan, keyboard hot keys and audible feedback, the DKVM-16 makes it simple to manage all of your server computers.

The DKVM-16 supports VGA, SVGA, and MultiSync monitors at up to 1920 X 1440 resolution. Integrated mouse conversion technology allows older AT type computers with serial mouse ports to be connected to the DKVM-16 using the included serial-to-PS/2 mouse converter. Both AT and PS/2 type keyboards are also supported, and the most popular mice are supported, including Microsoft® IntelliMouse® and Microsoft® IntelliMouse Explorer®.



Business KVM Solutions

16-Port KVM Switch



DKVM-16

TECHNICAL SPECIFICATIONS

Computer Control

16

Display Indicators

1 Bank LED
1 Port LED

Console Connectors

Keyboard:

6-pin Mini-DIN Female PS/2

Mouse:

6-pin Mini-DIN Female PS/2

Monitor:

15-pin HDDB Female VGA,
SVGA, XGA, MultiSync

Monitor Resolution Support

Up to 1920 X 1440

Switching Control

Hot Keys
Push Buttons
On Screen Display

Switching Notification

Audio Beep

Scanning Interval

5-99 sec

Power

12V 1A AC Adapter

Dimensions

Length 16 in (406 mm)
Width 9 in (229 mm)
Height 3.25 in (83 mm)
Weight 123oz (3.5kg)

Rackmount

19" Rackmountable. Kit Included

Cascade Port

1 Daisy Chain Port to Cascade Up
to 8 Server Computers

Operating Temp

32°F to 122°F (0°C to 50°C)

Storage Temp

-4°F to 140°F (-20°C to 60°C)

Operating Humidity

0% to 80% Non-Condensing

Storage Humidity

0% to 80% Non-Condensing

Certifications

FCC, CE

Minimum Requirements

Console

One VGA, SVGA, or
Multisync Monitor
One PS/2 Keyboard
One PS/2 Mouse

Computers

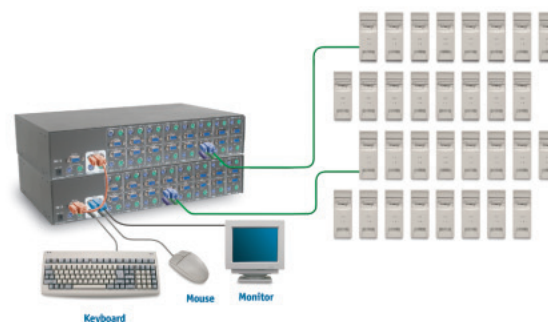
One VGA, SVGA, or MultiSync
Video Card or Port
One PS/2(6-pin Mini-DIN)
Mouse port
One PS/2((6-pin Mini-DIN)
Keyboard port

Warranty

1 Year

The DKVM-16 is 19" Rackmountable for
attaching up to 16 server computers.

It is easy to use, powerful, and scalable.



Fast Access to Your PCs Through One Console



D-Link Systems, Inc. 53 Discovery Drive Irvine CA 92618 www.dlink.com
©Copyright D-Link Systems, Inc. 2003. All rights reserved. D-Link is a registered trademark
of D-Link Systems, Inc. Other trademarks or registered trademarks are the property of their
respective manufacturers or owners. Price and specifications are subject to changes without
notice. See inside package for warranty details. *24/7 Tech Support is available only in USA.

D-Link®

Building Networks for People