

QUICK INSTALL GUIDE

DNS-321

VERSION 1.0



D-Link[®]

STORAGE

System Requirements

- 1GHz Processor / 512MB RAM
- 200MB available space
- CD-ROM drive
- Internet Explorer 6.0 or Mozilla Firefox 1.0 and above
- One or two 3.5" Internal SATA Hard Drives
- Windows® Vista™ or XP (with Service Pack 2)

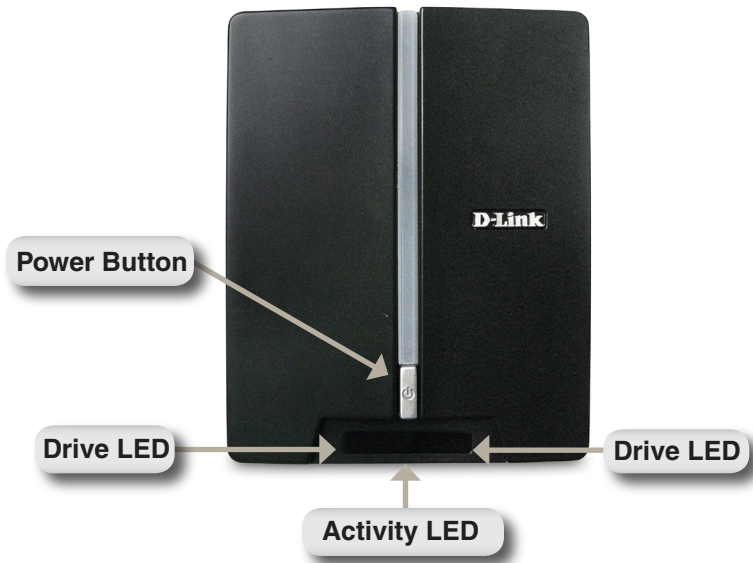
Package Contents

- D-Link DNS-321 2-Bay Network Storage Enclosure
- CD-ROM with Manual and Software
- Quick Installation Guide
- Power Adapter
- CAT5 Ethernet Cable

If any of the above items are missing, please contact your reseller.

Hardware Overview

Front View



Power Button:

Press once to power on the DNS-321. Press and hold the button until it begins blinking to power down the device.

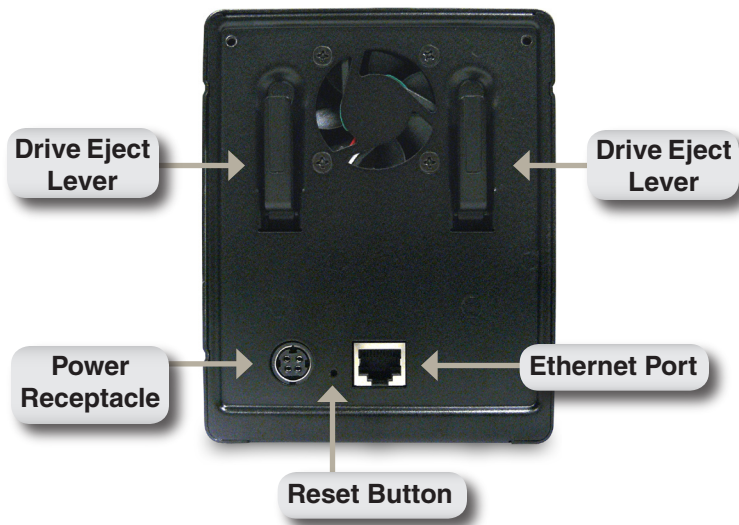
Drive LEDs:

These LEDs will be solid BLUE when drives are connected. The LEDs will blink when the drives are being accessed, formatted or synchronized. They will illuminate AMBER if a drive has failed.

Activity LED:

This LED will illuminate solid BLUE when there is an Ethernet connection. It will blink to indicate LAN traffic.

Rear View



Power Receptacle:

The supplied power adapter connects here.

Ethernet Port:

A Gigabit Ethernet port that connects the DNS-321 to the local network.

Drive Eject Lever:

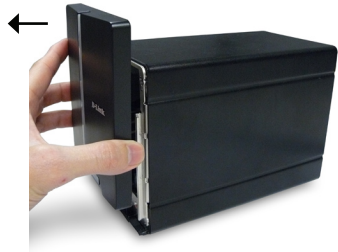
Use the provided levers to eject the SATA hard drives.

Hardware Installation

1. Access the drive bays by sliding the faceplate up until it unlatches from the device.



2. Once the faceplate is unlatched, pull it off of the device, exposing the drive bays.



3. Insert a 3.5" SATA hard drive into an available drive bay. Make sure to align the drive connector to the endpoint in the DNS-321. Gently push the drive in until it connects.



4. Attach the faceplate to the front of the device.



5. Connect an Ethernet cable into the available Ethernet port. This cable should connect the DNS-321 to your local network or directly to a computer for configuration.



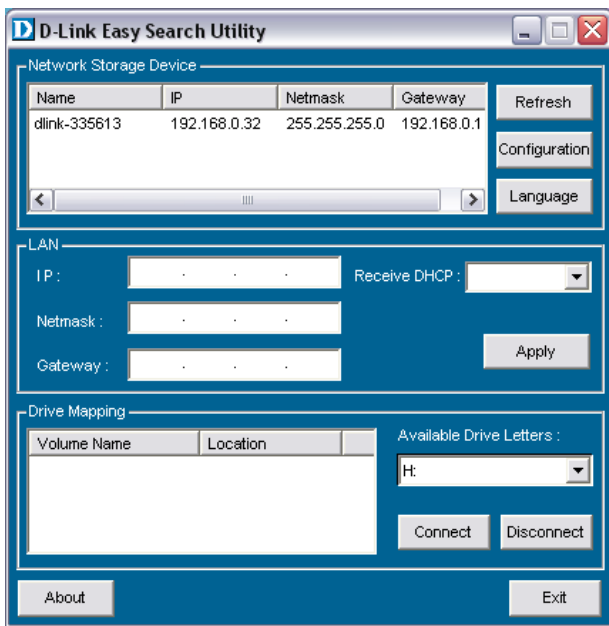
6. Finally, connect the power adapter to the power receptacle.



Easy Search Utility

When first powered on, during the initial boot sequence, the DNS-321 will wait to be assigned an IP address via DHCP. If it does not receive a DHCP assigned IP address, by default it will boot up with a self-assigned IP address of 192.168.0.32.

The Easy Search Utility provided on the DNS-321 CD-ROM makes it simple to find any DNS-321 devices on your network, and it is recommended to use the Easy Search Utility when accessing and configuring the DNS-321 for the first time. Each DNS-321 will have a unique name of dlink-xxxxxx where 'xxxxxx' is the last six digits of its MAC address.



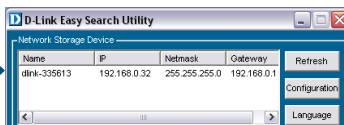
Getting Started

When logging into the DNS-321 for the first time, you will be asked to choose a drive configuration type and format the drives. There are four available options, Standard, JBOD, RAID 0 and RAID 1.

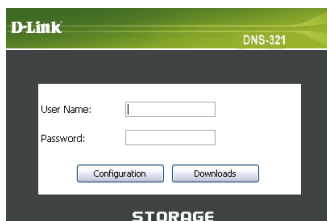
From the DNS-321 CD, select **Easy Search Utility**.



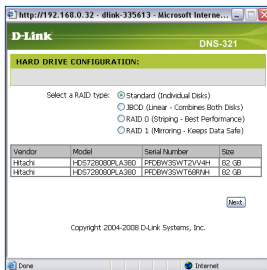
Highlight an available DNS-321 and click **Configuration** to access the web-based utility.



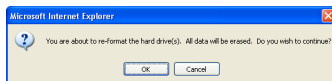
At the login screen, type **admin** for the user name and leave the password field blank. Click **Configuration**.



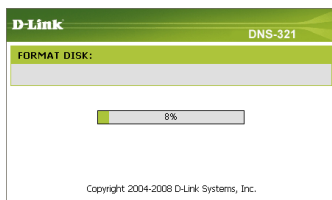
Select a type of hard drive configuration, and click **Next**.



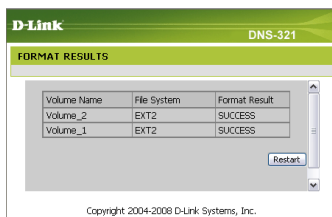
A message appears warning that when the drives are formatted all data will be erased. Click **OK** to continue.



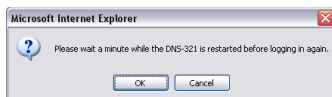
As the drives are being formatted, a progress meter will display.



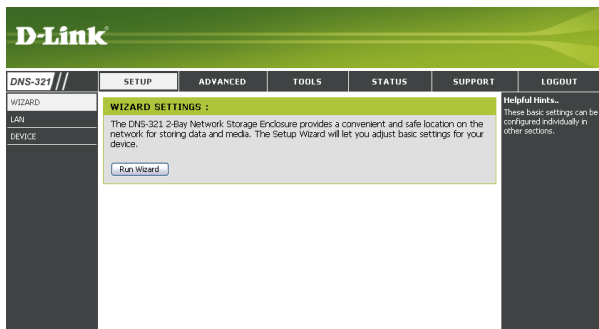
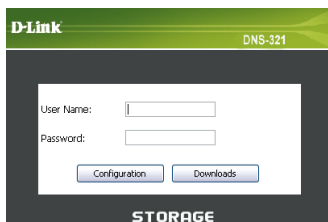
When formatting has completed, the results will be displayed. Click **Restart** to continue.



A message informing you that the DNS-321 will restart appears. Click **OK**.



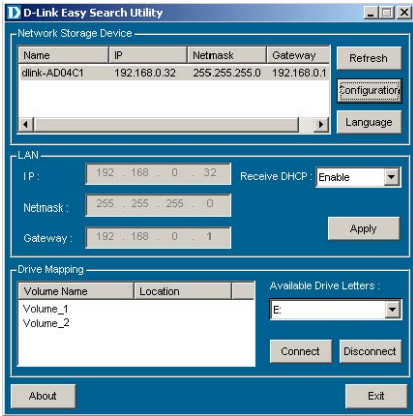
After the DNS-321 restarts, type **admin** for the user name and leave the password field blank. Click **Configuration**.



Your DNS-321 setup is now complete.

Mapping a Drive

The Easy Search Utility makes it simple to map drives to your computer. To get started, insert the DNS-321 CD into your CD-ROM drive and launch the Easy Search Utility.



The screenshot shows the D-Link Easy Search Utility window. It is divided into three main sections: Network Storage Device, LAN, and Drive Mapping. The Network Storage Device section contains a table with columns for Name, IP, Netmask, and Gateway. The LAN section contains fields for IP, Netmask, and Gateway, along with a Receive DHCP dropdown and an Apply button. The Drive Mapping section contains a table with columns for Volume Name and Location, and an Available Drive Letters dropdown with a Connect button.

Select an available DNS-321.

Available volumes will be displayed under Drive Mapping. Highlight the drive you want to map.

Select an available drive letter from the drop-down menu and click **Connect**.

Once connected, your mapped drive(s) will appear in My Computer as network drives.

Technical Support

D-Link's website contains the latest user documentation and software updates for D-Link products.

U.S. and Canadian customers can contact D-Link Technical Support through our website or by phone.

United States

Telephone

(877) 453-5465

World Wide Web

<http://support.dlink.com>

Canada

Telephone

(800) 361-5265

World Wide Web

<http://support.dlink.com>



Version 1.0
March 27, 2008

Copyright ©2008 D-Link Corporation/D-Link Systems, Inc. All rights reserved. D-Link, and the D-Link logo are registered trademarks of D-Link Corporation or its subsidiaries in the United States and other countries. Other trademarks are the property of their respective owners. Product specifications, size and shape are subject to change without notice, and actual product appearance may differ from that depicted on the packaging. Visit www.dlink.com for more details.