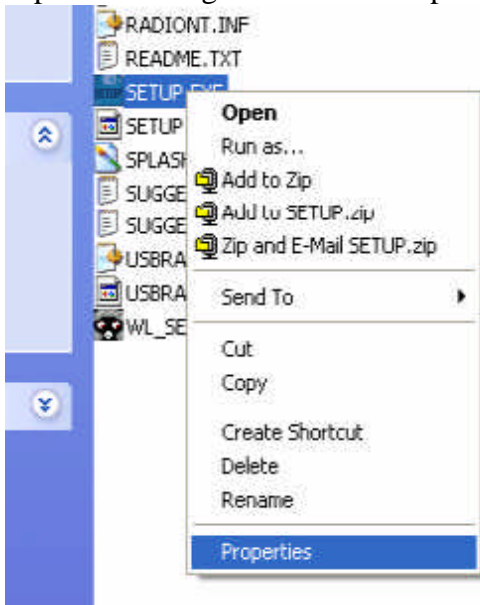
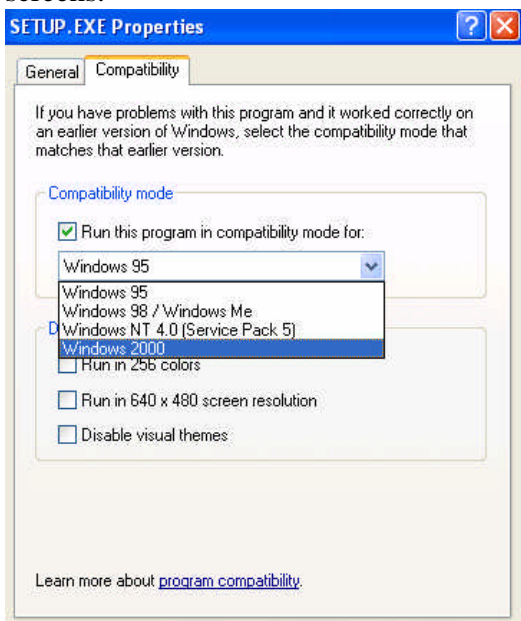


DSB-R100 USB FM Radio Ver. 6.00b

- Download the DSB-R100 driver version 6.00b from <http://support.dlink.com>
- Make a folder for the driver that is downloaded and unzip it. Double-click on the folder to expand it and right-click on “setup”.



- At this time, do not plug in the DSB-R100 to the computer yet. Notice that there are no drivers for Windows XP, the Windows 2000 drivers should work for Windows XP but bear in mind that this is a beta driver for Windows XP and some functionality may not work in it.
- Go to properties and select “compatibility”, check on “run this program in compatibility mode” and select Windows 2000. Click on ok and double-click on setup and follow the screens.



- Click **Next**.



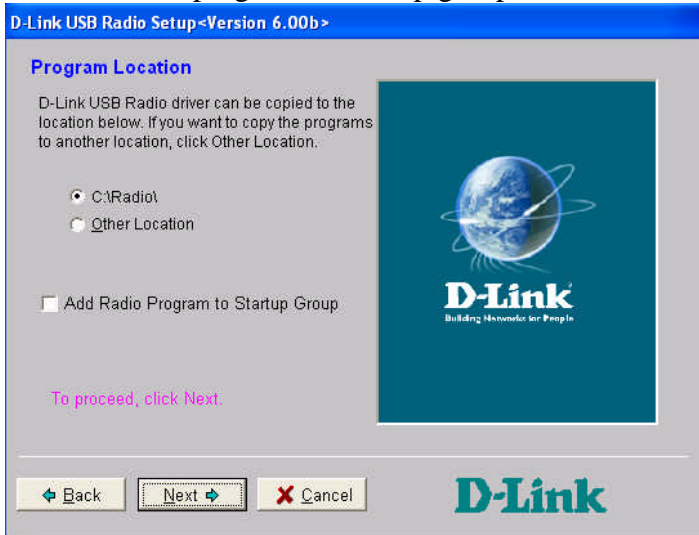
- Click **Install**.



- Depending on which port the DSB-R100 sound in is plugged in to; this is where the selection is made. Be sure the right option is selected or the radio will not produce any sound. Click **Next**.



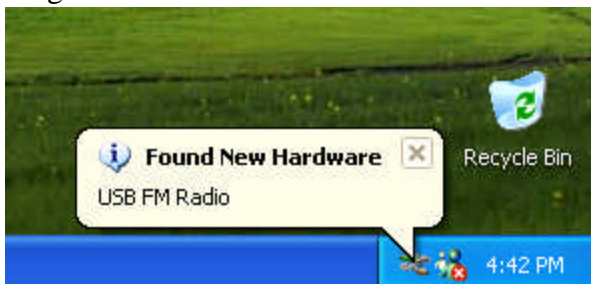
- If it is desired to have the radio come on as soon as the computer is booted up then select the “add radio program to startup group”, otherwise uncheck this option. Click **Next**.



- Click **Finish** to complete the software installation.



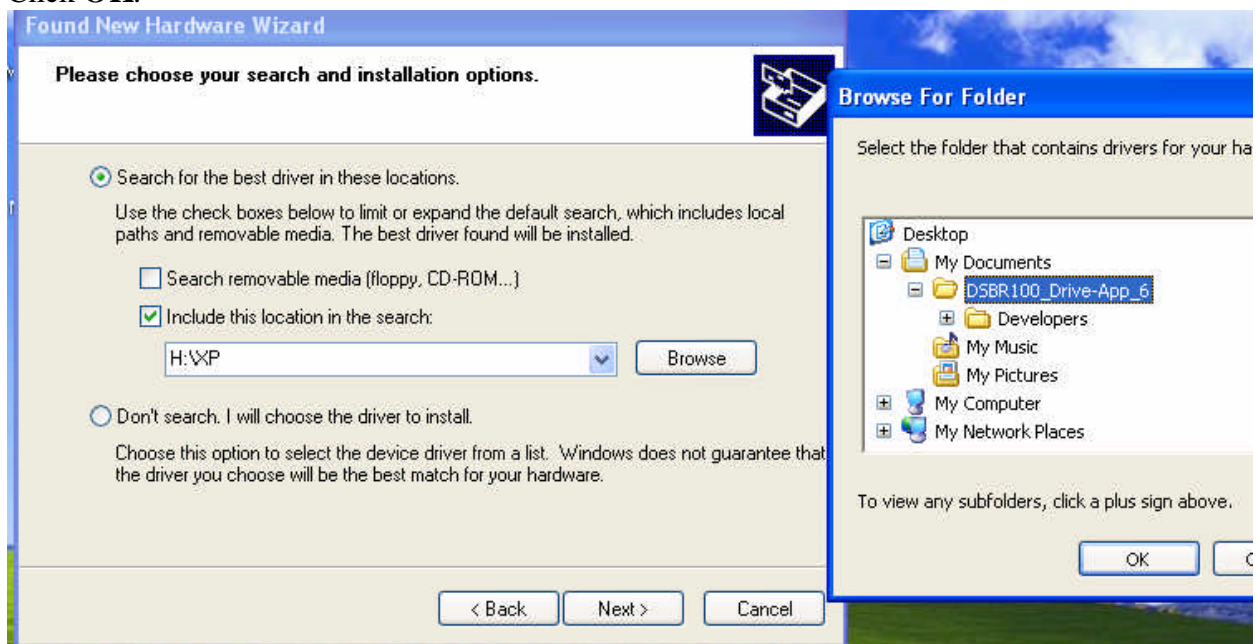
- Plug in the DSB-R100 and a new hardware is detected.



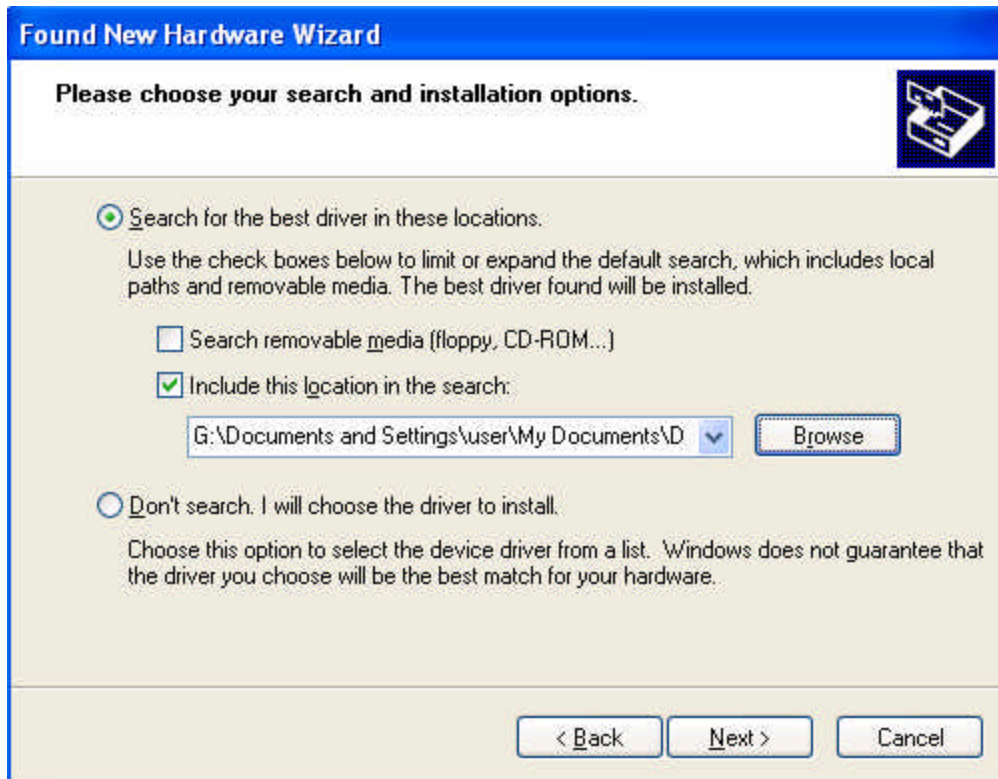
- Choose “Install from a specific location” and click **Next**.



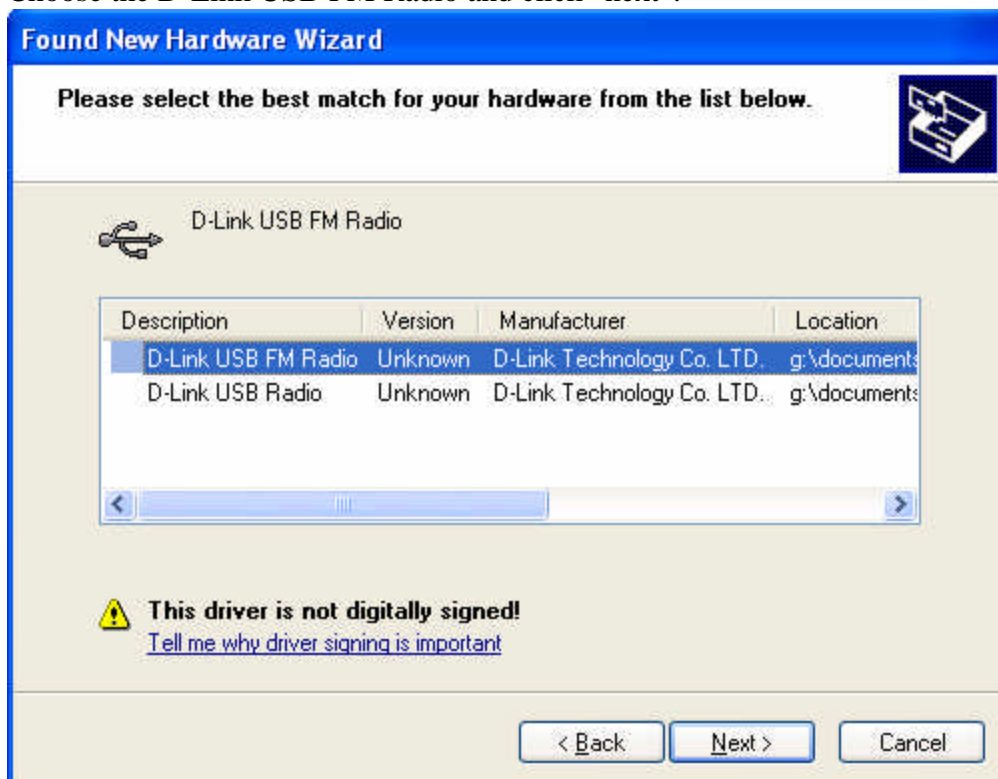
- Select “Include this location in the search” and click the **browse** button.
- Then select the folder where you extracted the DSB-R100 drivers.
- Click **OK**.



- Click **Next** to Continue.



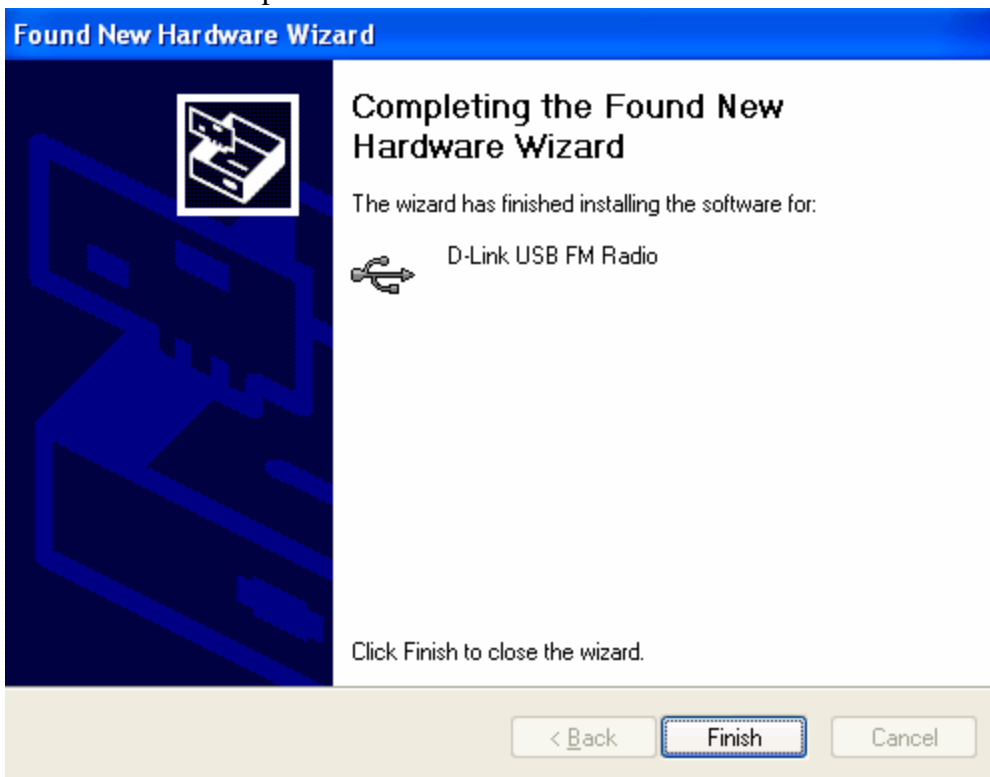
- Choose the D-Link USB FM Radio and click “next”.



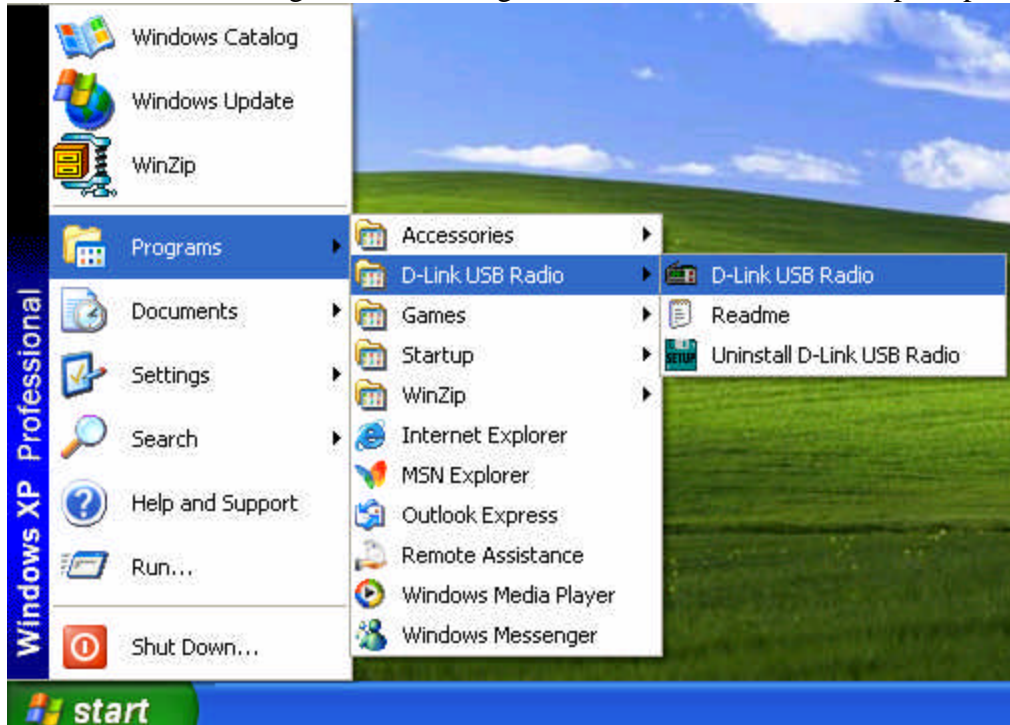
- Click on “Continue anyway”.



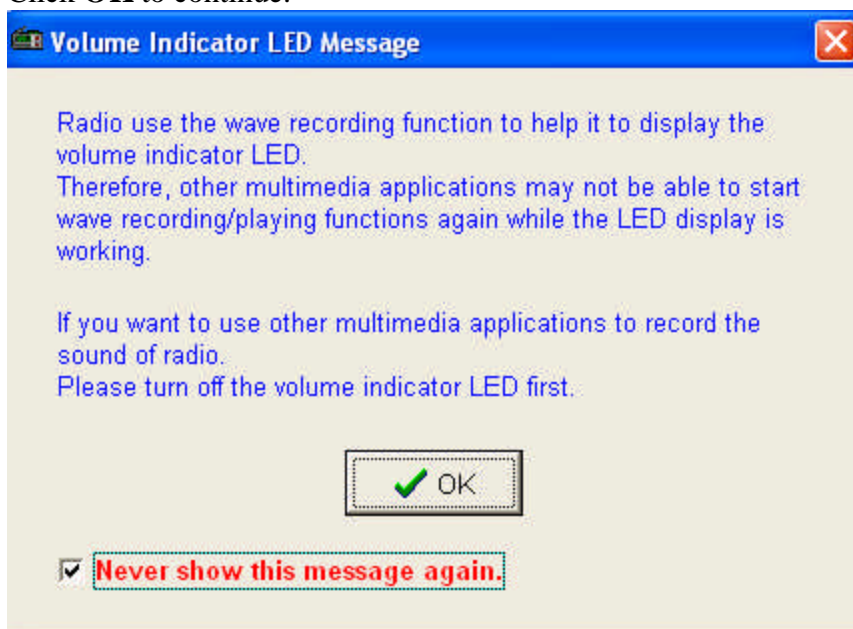
- Click **Finish** to complete the driver installation.



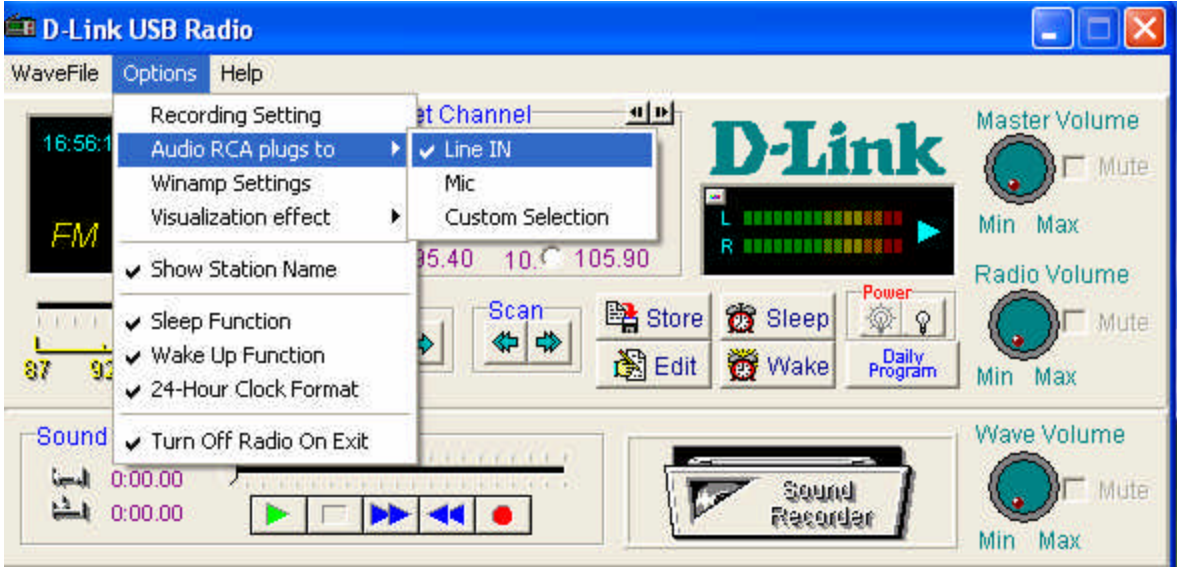
- To start the software, go to Start > Programs > D-link USB radio to open up the program.



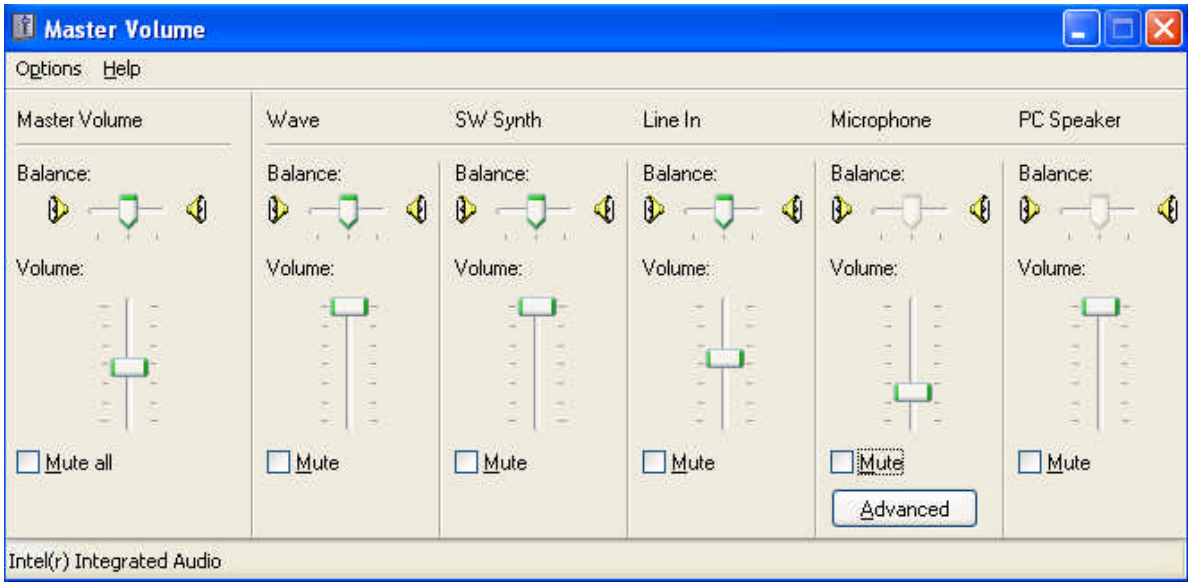
- It may be desirable to not have this displayed every time the application starts, check “Never show this message again” if that is the case.
- Click **OK** to continue.



- To change the line-on option, click on Options, Audio RCA plugs to, and then select the appropriate option for your use.



- In the case that the input selection is incorrect, it is possible to change the settings here.
- Please be advised that Windows XP may not show the volume controls or the volume bar as active on the DSB-R100 GUI interface. Volume control is done with Windows' default volume controls. Get to the following screen by double-clicking the speaker icon next to the time on the Windows task bar.



- If there are still no sounds, go to the volume control and make sure that all mutes are deselected.

Technical Support

The most recent software and documentation are available on the **D-Link** website.

D-Link provides free technical support for customers within the United States during the warranty period on this product.

U.S. customers can contact D-Link Technical Support through our web site, or by phone.

D-Link Technical Support over Telephone :

(800) 758-5489

24 hours a day, seven days a week.

D-Link Technical Support over the Internet:

<http://support.dlink.com>

D-Link[®]
Building Networks for People
<http://www.dlink.com>