



WIRELESS
MEDIA PLAYER

Contents

| | |
|--|----|
| Safety Information | 4 |
| Introduction..... | 6 |
| Package Contents | 7 |
| System Requirements..... | 7 |
| Features & Benefits..... | 8 |
| Hardware Overview | 9 |
| Front Panel..... | 9 |
| Rear Panel..... | 9 |
| Getting Started..... | 10 |
| Using the Remote Control | 10 |
| Installing the D-Link® Media Server Software | 13 |
| Choosing Music, Photo, and Video Files to Share | 18 |
| Using the D-Link® Media Server Software..... | 22 |
| Accessing the Media on your PCs..... | 22 |
| Sharing Media Content in Folders | 23 |
| Refreshing Folder Contents | 23 |
| Naming the Media Server | 24 |
| Upgrading the Media Server..... | 25 |
| Stopping the D-Link Media Server..... | 26 |
| Using Windows® Media Connect Software | 27 |
| Configuring Windows® Media Connect..... | 27 |
| Connecting the DSM-320 | 32 |
| Video Connections | 32 |
| Audio Connections | 33 |
| Network Connections | 34 |
| Network Layout..... | 35 |
| Using the On-Screen Keyboard | 36 |
| The DSM-320 Setup Wizard | 37 |
| DSM-320 Menu | 42 |
| Menu Basics | 42 |
| Menu Home | 42 |
| Music | 43 |
| Music Quality | 43 |
| Supported Music Formats | 43 |
| Organizing Music Files | 44 |
| Playing a Track | 45 |
| Creating a Preset..... | 46 |
| Browsing for Music | 47 |
| Creating Music Playlists using 3rd Party Software..... | 48 |
| Playing a Playlist..... | 48 |
| Controlling Music Playback | 48 |
| Playing a Group of Songs | 48 |
| Playing Individual Songs..... | 48 |
| Creating an Editable Playlist..... | 49 |
| Creating an Editable Playlist..... | 50 |
| Creating an Editable Playlist..... | 51 |
| “Now Playing” | 51 |
| Viewing Photos while Music is Playing..... | 52 |
| Shuffle and Repeat..... | 52 |

| | |
|--|-----|
| Photo | 53 |
| Supported Photo Formats | 53 |
| Organizing Photo Albums | 54 |
| Playing a Photo Slideshow..... | 55 |
| Controlling Photo Playback | 55 |
| Shuffle and Repeat..... | 55 |
| Viewing Photo Information..... | 56 |
| Photo Viewing Effects..... | 57 |
| Video..... | 58 |
| Supported Video Formats | 58 |
| Viewing a Video | 58 |
| How to use the ‘Search Video by Time’ feature..... | 59 |
| Search Video by Time (continued) | 60 |
| Search Video by Time (continued) | 61 |
| Subtitles | 62 |
| Using the Remote Control with Videos | 63 |
| Search..... | 64 |
| Online Media | 65 |
| AOL Music Now | 66 |
| Live365™ | 67 |
| Napster™ | 71 |
| Rhapsody™ | 73 |
| Current Rhapsody™ Subscribers..... | 73 |
| For New Rhapsody™ Users | 74 |
| Configuring Rhapsody™ for use with the DSM-320 | 80 |
| Yahoo..... | 82 |
| Setup..... | 83 |
| Network | 83 |
| Wireless..... | 84 |
| System..... | 86 |
| General..... | 87 |
| Audio/Video | 87 |
| Miscellaneous..... | 88 |
| Music Presets | 88 |
| Check Internet Connection..... | 89 |
| Version | 90 |
| Frequently Asked Questions..... | 91 |
| Troubleshooting | 93 |
| Technical Specifications..... | 100 |
| Appendix | 102 |
| Setting Microsoft Windows® Power Options | 102 |
| Wireless Installation Considerations | 103 |
| Audio and Video Cables Guide | 104 |
| Glossary | 106 |
| Networking..... | 106 |
| Music | 108 |
| Photo | 109 |
| Video..... | 110 |
| Contacting Technical Support..... | 111 |
| Warranty | 112 |
| Registration..... | 115 |

Safety Information

For optimum performance, please read the following information carefully.

Safety Precautions

| | | |
|---|---|---|
|  | CAUTION RISK OF ELECTRIC SHOCK DO NOT OPEN |  |
| CAUTION : TO REDUCE THE RISK OF ELECTRIC SHOCK, DO NOT REMOVE COVER (OR BACK). NO USER SERVICEABLE PARTS INSIDE. REFER SERVICING TO QUALIFIED SERVICE PERSONNEL. | | |



The lightning flash with arrowhead symbol, within an equilateral triangle, is intended to alert users to the presence of uninsulated “dangerous voltage” within the product’s enclosure that may be of sufficient magnitude to constitute a risk of electric shock to persons.



The exclamation point within an equilateral triangle is intended to alert the user to the presence of important operating and maintenance (servicing) instructions in the literature accompanying the appliance.

CAUTION!

THE POWER SUPPLY CORD IS USED AS THE MAIN DISCONNECT DEVICE. ENSURE THAT THE SOCKET-OUTLET IS LOCATED/INSTALLED NEAR THE EQUIPMENT AND IS EASILY ACCESSIBLE.

WARNING!

TO REDUCE THE RISK OF FIRE, ELECTRIC SHOCK, OR PRODUCT DAMAGE, DO NOT EXPOSE THE UNIT TO RAIN, MOISTURE, DRIPPING, OR SPLASHING. DO NOT PLACE OBJECTS FILLED WITH LIQUIDS UPON THE UNIT.

Safety (continued)

CAUTION!

- **DO NOT INSTALL OR PLACE THIS UNIT IN A BOOKCASE, BUILT-IN CABINET OR IN ANOTHER CONFINED SPACE. ENSURE THE UNIT IS WELL VENTILATED. TO PREVENT RISK OF ELECTRIC SHOCK OR FIRE HAZARD DUE TO OVERHEATING, ENSURE THAT CURTAINS AND ANY OTHER MATERIALS DO NOT OBSTRUCT THE VENTILATION VENTS.**
- **DO NOT OBSTRUCT THE UNIT'S VENTILATION OPENINGS WITH NEWSPAPERS, TABLECLOTHS, CURTAINS, AND SIMILAR ITEMS.**
- **DO NOT PLACE SOURCES OF NAKED FLAMES, SUCH AS LIGHTED CANDLES, ON THE UNIT.**
- **DISPOSE OF BATTERIES IN AN ENVIRONMENTALLY-FRIENDLY MANNER.**

CAUTION!

TO PREVENT ELECTRIC SHOCK, MATCH THE WIDE BLADE OF THE PLUG TO THE WIDE SLOT OF THE ELECTRICAL OUTLET AND FULLY INSERT.

This device is designed and manufactured to assure personal safety. Improper use can result in electric shock or fire hazard. The safeguards incorporated in this unit will protect you if you observe the following procedures for installation, use, and servicing. This device does not contain any user serviceable parts.

- **Carefully read and follow the Manual and Quick Installation Guide.**
- **Do not place the product near heat sources such as radiators, heat registers, stoves, or other products that produce heat.**
- **Do not use this product near water.**
- **Unplug the unit from the wall outlet before cleaning. Do not use liquid cleaners or aerosol cleaners. Use a damp cloth for cleaning.**
- **Power-supply cords should be routed so that they are not likely to be walked on or pinched by items placed upon or against them.**
- **Do not overload wall outlets.**
- **Do not use this product during a storm. Unplug the unit from the wall outlet. If the product is to be left unattended for a long period of time. This will prevent damage to the product due to lightning and power-line surges.**
- **Do not attempt to service this product yourself. Opening the cover may expose you to dangerous voltage or other hazards. For service, please contact a qualified service technician.**

Introduction

D-Link® introduces the latest addition to its multimedia family of products: the ***D-Link® MediaLounge™ DSM-320 Wireless Media Player***. The DSM-320 integrates home computer systems and home entertainment centers. Digital media content can be accessed directly from a computer. Movies, music, and photos can be enjoyed from the comfort of the living room. The DSM-320 features 802.11g wireless technology and can easily connect to a wired network. These options provide you with the maximum throughput for sharing and transferring digital media.

Simple to setup with a sleek design that makes it a natural addition to any home entertainment center. The AV jacks on the back panel of the DSM-320 allow for direct connection to your television. Use the included remote control to access media content stored on your PC. Browse music files, watch videos, and display photos, all on your television! In addition, the DSM-320 lets you access online media content on your television through an existing broadband Internet connection.

The DSM-320 adheres to the Universal Plug-&Play AV specification, allowing it to communicate with other UPnP AV media devices. The DSM-320 is part of Microsoft's PlaysforSure logo program that ensures the compatibility of the device with Windows® Media Protected Audio files.

The DSM-320 supports the majority of audio, video, and image file formats and streams them directly from your PC. You can stream MP3, WMA, WAV, OGG Vorbis, and AIFF files from your computer and enjoy them on your home stereo system. Watch stored videos in MPEG1/2/4, AVI, or Xvid format on your television. Enjoy slideshows of your favorite photos in JPEG, JPEG2000, TIFF, GIF, BMP or PNG formats. Better yet, it's easy to access the files through the television interface using the remote control included with the DSM-320.

Experience digital media like never before with the MediaLounge DSM-320 Wireless Media Player. The DSM-320 includes everything you need to instantly access and play music, videos, and photos using your home entertainment center.

Disclaimer: Certain content and services accessible via the DSM-320 may include materials owned by third parties. The users shall be entirely responsible for ensuring that they have the necessary rights to access and use such third party content. D-Link assumes no liability for and shall not be responsible for a user's access of such content, including but not limited to unlawfully 'ripped' or downloaded content. Further, D-Link does not guarantee the availability of any third party content or services, including that which may be referenced herein, and shall not be responsible for any changes to or the lack of availability of such third party content or services.

Package Contents



- **D-Link DSM-320 Wireless Media Player**
- Printed Quick Installation Guide
- CD-ROM with Manual (Contains D-Link Media Server Software, Quick Installation Guide, and Manual)
- 2dBi Wireless Antenna
- Ethernet (CAT5-UTP/Straight-Through) Cable
- Standard Composite RCA Audio/Video Cable
- S-Video Cable
- Remote Control with Batteries

System Requirements

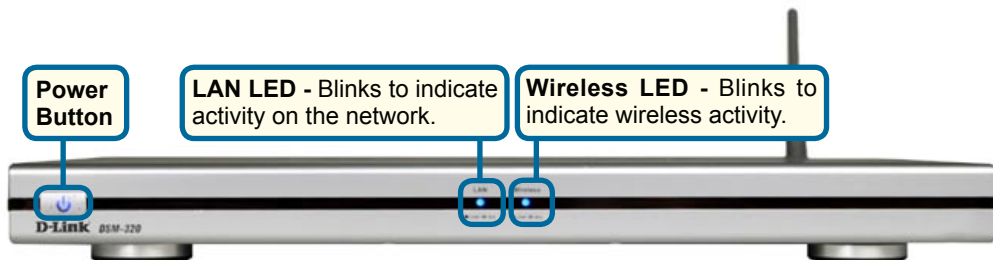
- Television with composite, S-Video, or component video inputs and an audio device with composite, coaxial digital or optical digital audio inputs.
- A wireless (802.11g or 802.11b) or Ethernet network. An Ethernet network is recommended for optimal video streaming.
- Minimum to run the Media Server software: PC with 1GHz processor, 512MB RAM and 100MB of hard disk space.
- Windows® XP/2000.
- A CD-ROM drive.

Features & Benefits

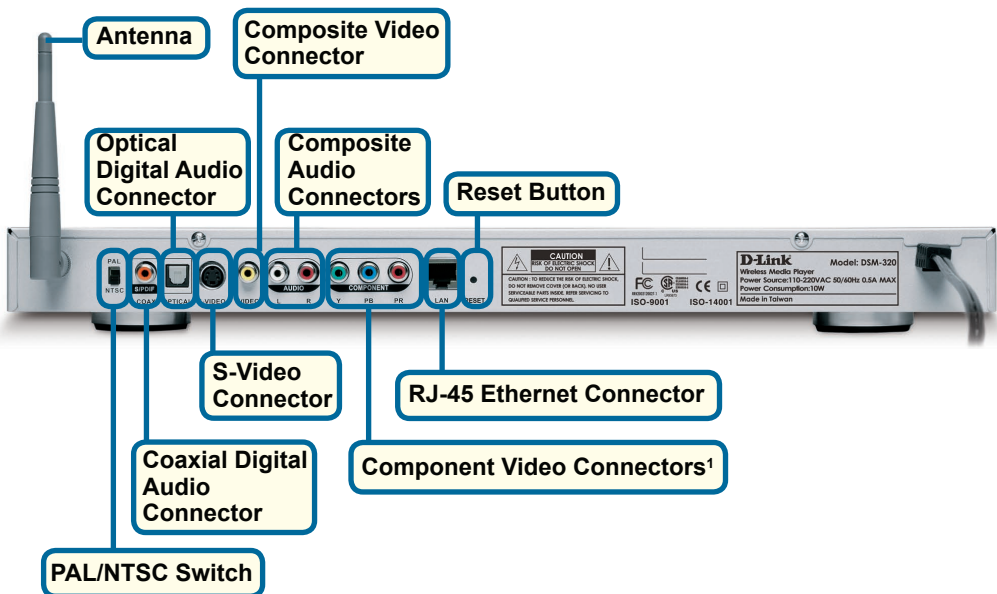
- Stream media content from a PC or D-Link Network Attached Storage to your entertainment center.
- Listen to digital music on your stereo system.
- View digital photos, slideshows, and videos on TV.
- Easily connect to your wireless network using 802.11g.
- 802.11b compatible.
- Connect using an Ethernet network cable.
- UPnP AV compliant for maximum compatibility.
- PlaysForSure Audio logo certified. WMDRM content can be streamed to the unit using Windows® Media Connect software.
- Support for most popular digital media formats.
- Remote controlled TV interface for quick access to your media content.
- Experience a world of online media content.
- Sit'n click access to your digital media.
- Sleek design complements your existing audio/video equipment.
- Optical and coaxial digital audio output.
- Component video output.
- 64- or 128-bit WEP security.
- Convenient one-touch access to preset music.
- Supports DHCP for easy connection to your home network.
- Color coded one-touch shortcut buttons on the remote, for quick access to music, photos, videos, and online media content.
- Built-in screensaver.
- Easy setup wizard.
- Support for video subtitles (.SRT format).

Hardware Overview

Front Panel



Rear Panel



Note: Be sure the PAL/NTSC switch is set to NTSC if you are located in the USA.

¹For European customers, a SCART interface will replace the Component Video Connectors.

Getting Started

To begin using the DSM-320 Wireless Media Player, you will need:

- An existing home network (including a wireless 802.11b or 802.11g router or a router/hub with an available Ethernet port).
- The DSM-320 Media Server software installed on the PC you will be sharing files from. This computer will collect music, photo and video content from local sources (a digital camera for example) and from the Internet (downloaded MP3 music, digital photos, or video files).
- The DSM-320 Wireless Media Player connected to your television and audio system.

Using the Remote Control

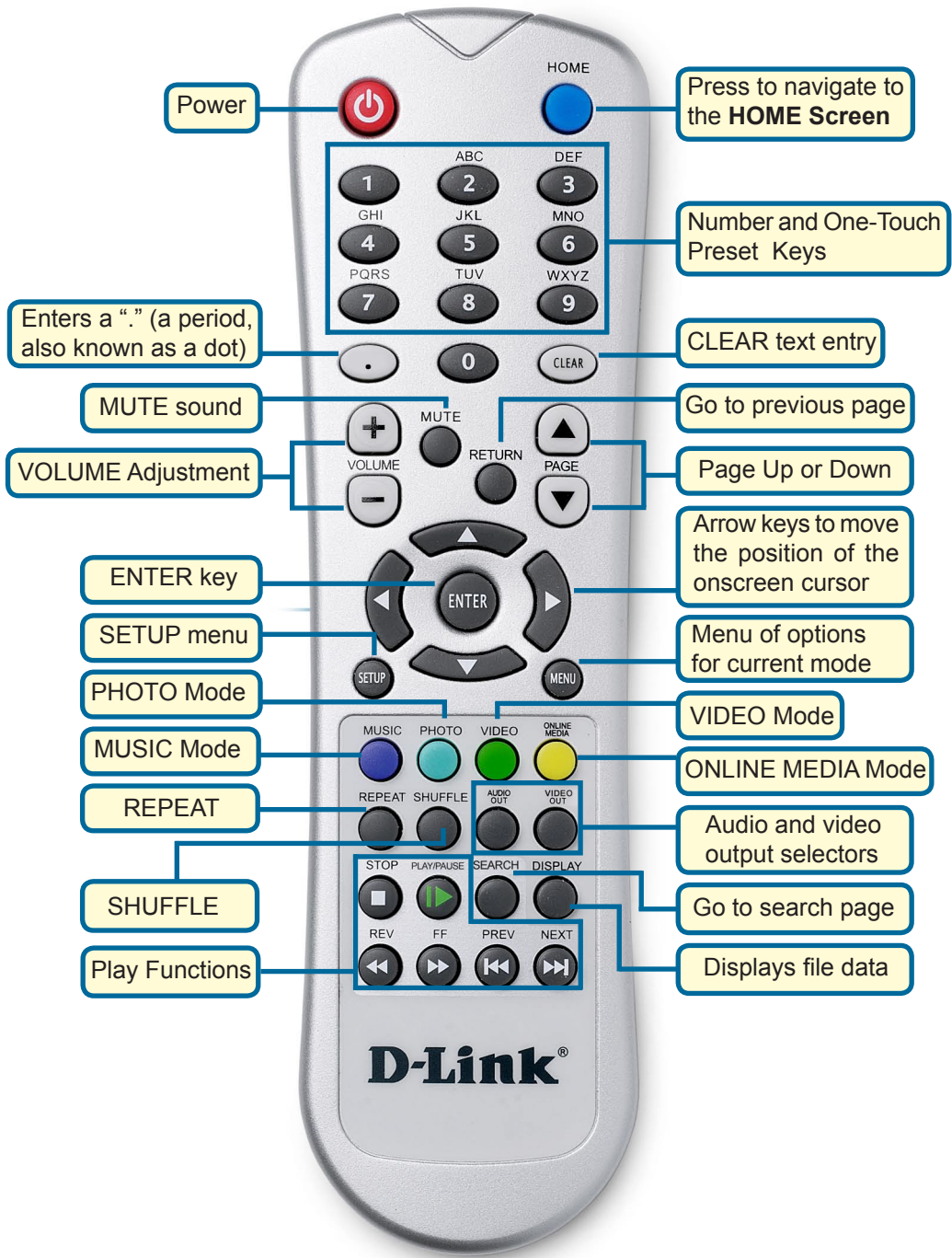
The remote control is used to configure and control the DSM-320.

Information for the Setup Wizard is entered by using the remote control. The remote is used to enter numbers, letters, special characters and to make selections from an on-screen keyboard. The on-screen keyboard is activated by pressing **Enter** on the remote control whenever the on-screen cursor is located in a field where text is required.

The following page details the remote control and shows the function of each button.

The recommended range for remote control usage is within 15 feet from the unit, with the remote angled at no more than 45 degrees.

Using the Remote Control (continued)



Using the Remote Control (continued)

| | |
|-----------------------|--|
| Power | Turn the DSM-320 ON or OFF . |
| Home | Navigate to the DSM-320's home screen. |
| Number Keys | Enter numbers where needed, or use the onscreen keyboard. Number keys 1-9 can be defined as Music presets . To define a preset, highlight the desired music selection onscreen, and press down on the desired number (from 1-9) on the remote control until the preset icon appears. Press the assigned number to play the selection. The 0 key can stop and restart a song that is already playing. |
| “.” | (a period, also known as a dot.) |
| Clear | Delete text. |
| Mute | Turn OFF the audio. |
| Return | Return to the previous page. |
| Volume + | Increase the volume. |
| Volume - | Decrease the volume. |
| Page Up/Down | Press Up to scroll up a page, and press Down to scroll down. |
| Enter | Make a selection. |
| Setup | Access the Setup menu. |
| Arrow keys | Move the onscreen cursor, navigate through media file names, and use for primary navigation through the interface. Right is forward, left is back. |
| Menu | Menu option for current mode. |
| Photo | Access the Photo mode. |
| Music | Access the Music mode. |
| Video | Access the Video mode. |
| Online Media | Access the Online Media mode. |
| Repeat | Repeat the current Music, Video, or Photo Slideshow selection. |
| Audio Out | Select different audio output. Default is composite. |
| Video Out | Select different video output. Default is composite/S-Video. |
| Shuffle | Shuffle music tracks in a playlist or photos during a slideshow. |
| Play Functions | While viewing and listening to your media, you can use these keys to Stop , Play/Pause , Rewind , Fast Forward , go back (Prev), or go to the next item (Next). |
| Search | Enter the Search function or search video by time. |
| Display | Display information about a file. For instance, view the type of photo and the name, date and other information about the photo. Also, the “Now Playing” feature can be displayed. |

Installing the D-Link® Media Server Software

To share audio, video, and photo files from your computer, it is necessary to install the D-Link® Media Server software on the PC that contains the files you want to share. The D-Link® Media Server software allows you to point to the folders on your PC's hard drive that contain the audio, video, and photo files you want to share. The D-Link® Media Server software then streams the information to your DSM-320 via your wired/wireless network connection.

Currently the DSM-320 only connects to one Media Server at a time. If more than one PC contains files you want to share, you can select one of the following options:

1. Copy all of the files to one computer designated to run the D-Link® Media Server Software.
2. Map network drives from the computer with the D-Link® Media Server software to additional computers that contain files you want to share. This method also allows you to share files from computers that cannot run the D-Link® Media Server software such as Macintosh systems. The computer running the D-Link® Media Server software must always be on when streaming content from any computer.
3. Install the D-Link® Media Server software on each computer. You can only connect to one server at a time. To connect to another server, you must go into the setup and change the Default Server.

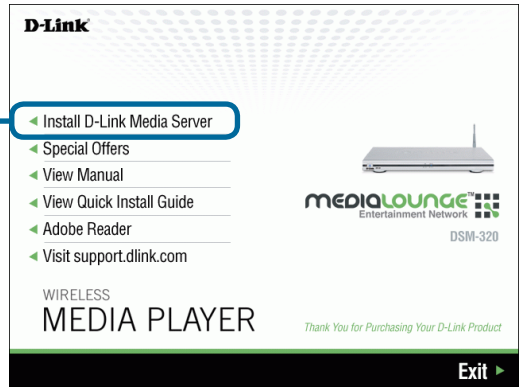
To install the D-Link® Media Server software, follow the steps on the following pages.

Note: *If you have a version of the D-Link® Media Server already installed on your system, please uninstall the software and restart your system before installing a newer version of the software.*

Installing the D-Link® Media Server Software (continued)

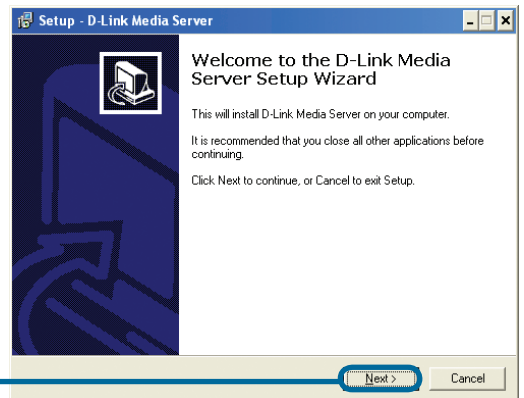
Click on **Install D-Link Media Server**

If the screen on the right does not appear, go to **My Computer** and double-click on the **CD-ROM drive**. The screen at right will appear.



The D-Link Media Server Setup Wizard will appear.

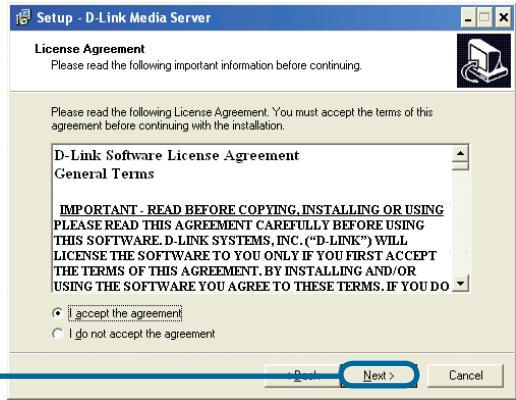
Click **Next**



Installing the D-Link® Media Server Software (continued)

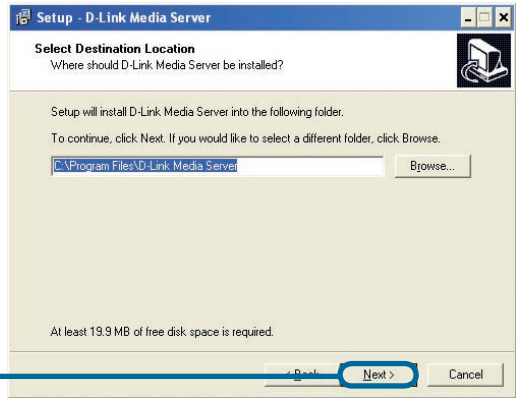
The D-Link license agreement screen appears.

Click **Next**



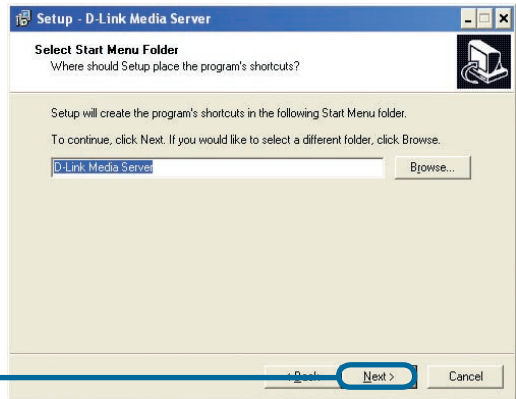
Choose a Destination location or accept the default location. This is where the D-Link Media Server software will be copied to on your system.

Click **Next**



Choose a Start Menu folder or accept the default location.

Click **Next**



Installing the D-Link® Media Server Software (continued)

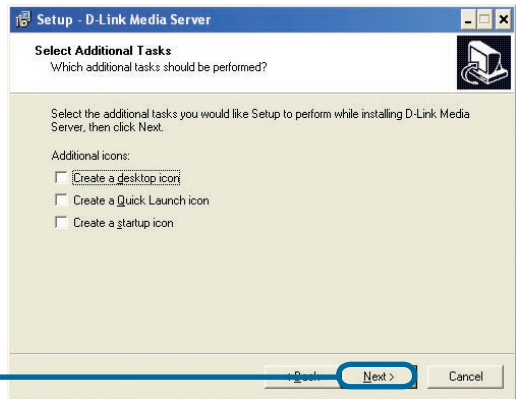
Select the icons you want created.

Select **Create a desktop icon** to access the program from your desktop.

Select **Create a Quick Launch icon** to access the program from your taskbar.

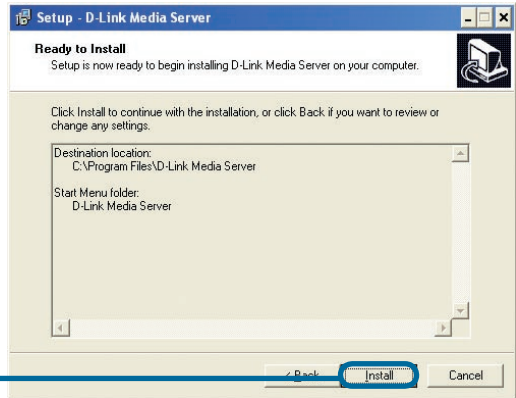
Select **Create a startup icon** so the program launches on startup.

Click **Next**



The necessary software will be copied to the specified locations on your computer.

Click **Install**



Check **Launch D-Link Media Server**



Click **Finish**

The D-Link® Media Server software installation has been completed!

Installing the D-Link® Media Server Software (continued)


The Windows® Security Alert screen may open when the D-Link® Media Server is started. Click **Unblock** when this message appears.

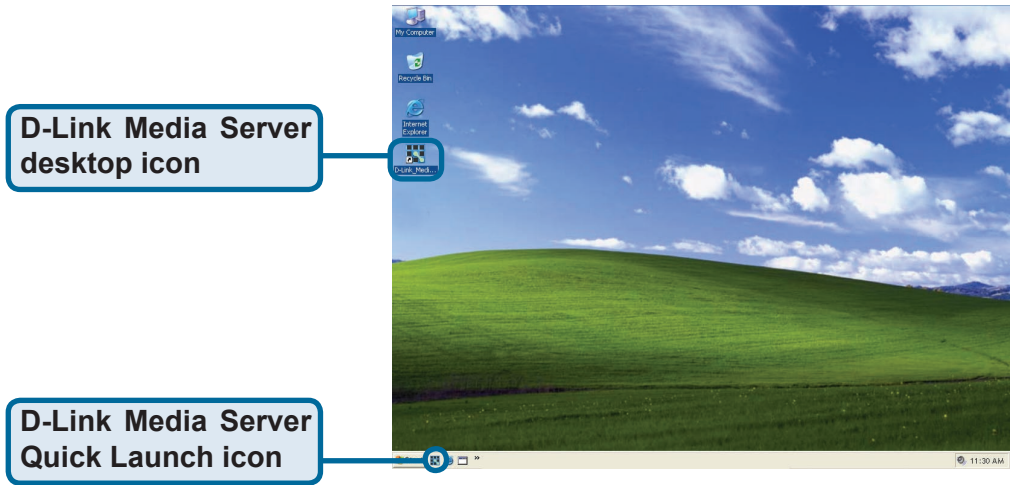


If your computer is using firewalls set by security software, etc., you may need to reset the firewalls before you can use the D-Link® Media Server.

Choosing Music, Photo, and Video Files to Share

The D-Link® Media Server software enables you to share the files from your computer with the DSM-320. By sharing the files, there is no need to copy the files from your computer to the unit before they can play. The data is streamed directly from the files on your computer over the network to your DSM-320. Follow the steps on the following pages to choose the music, photo, and video files to share.

If you chose to create a desktop or Quick Launch icon during the software installation, click on the  icon to launch the D-Link Media Server software application.

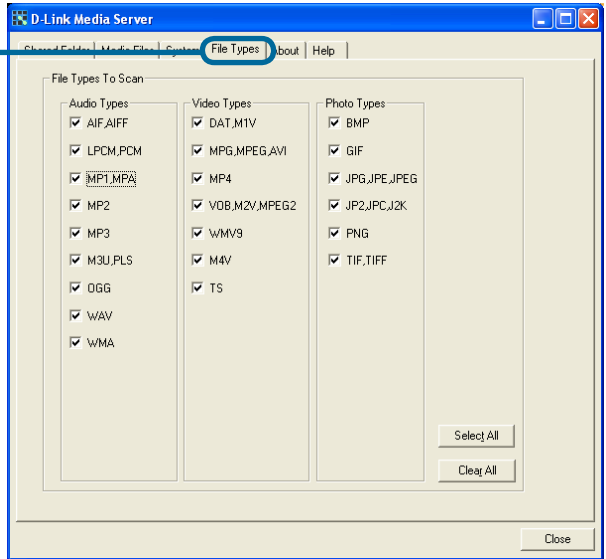


If you chose not to create a desktop or Quick Launch icon during the software installation, then you can launch the application by going to your Start Menu, selecting All Programs, and then clicking on D-Link Media Server icon within the D-Link Media Server folder.



Choosing Music, Photo, and Video Files to Share (continued)

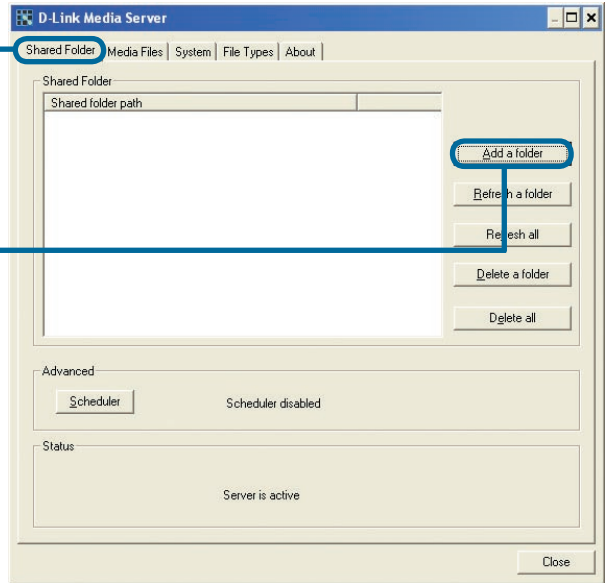
The **File Types** tab is where you select the types of audio, video, and photo files that you want to share.



Choosing Music, Photo, and Video Files to Share (continued)

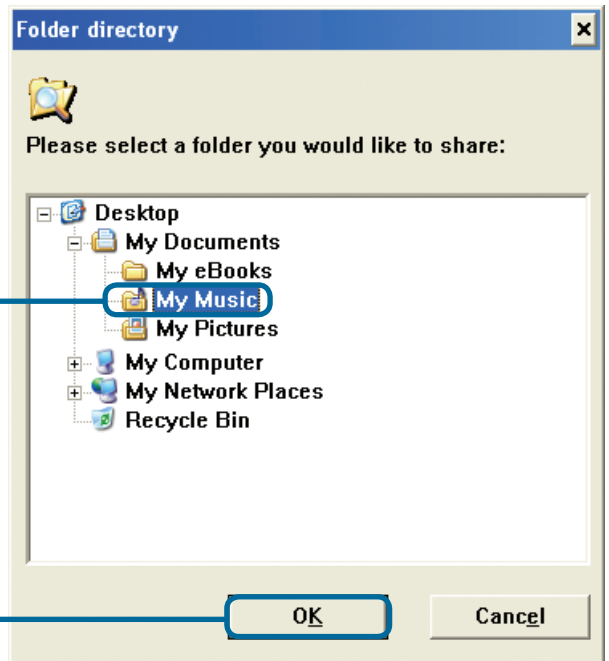
The **Shared Folder** tab is where you select the folders that contain your audio, video, and photo files.

Click **Add a folder**



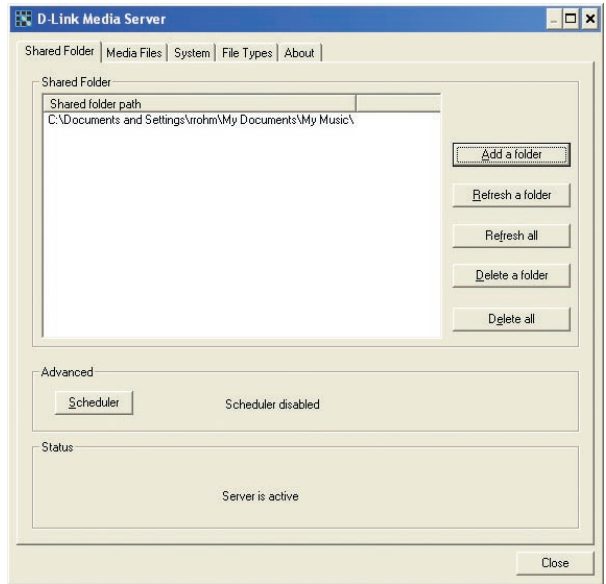
Select the folder containing the files you wish to share.

Click **OK**



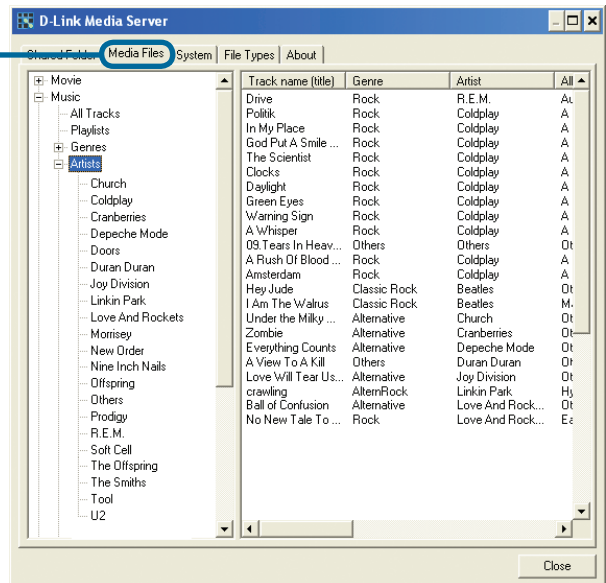
Choosing Music, Photo, and Video Files to Share (continued)

Repeat the steps until all of the folders containing audio, video, and photos you want to share have been added.



This is what your PC should look like when the D-Link® Media Server software configuration is complete!

The **Media Files** tab will show all your audio, video, and photo files as well as display important file information.



Using the D-Link® Media Server Software

Accessing the Media on your PCs

Before you can access the media from a PC, you must install the D-Link® Media Server software (See Page 13). Simply install the included software on each PC where music, video, or digital photos are stored.

If you selected the option to **Create a startup icon** during the Media Server software installation (See Page 16), the D-Link® Media Server software will automatically start whenever you power on your PC.

Whenever you close the Media Server configuration window, you can return to the Media Server configuration window by clicking on the Media Server icon in your system tray.



DSM-320 System Tray Icon

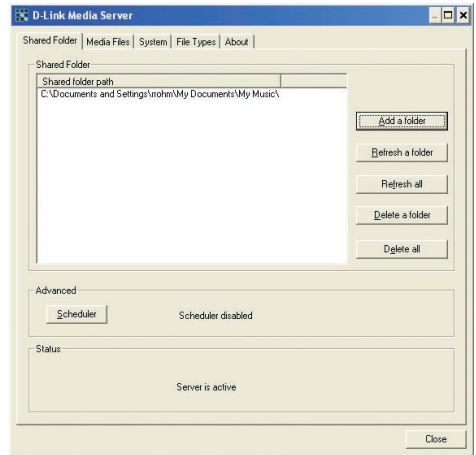
Using the D-Link Media Server Software (continued)

Sharing Media Content in Folders

The D-Link Media Server will share media content from selected directory folders. All subfolders within a shared folder are shared as well.

The Shared Folders tab displays the list of shared folders.

Add folders where your music, photos, and videos are stored, or remove folders you no longer wish to share. Depending on the number of files in your folders, there may be a slight delay before the path appears in the window.



Refreshing Folder Contents

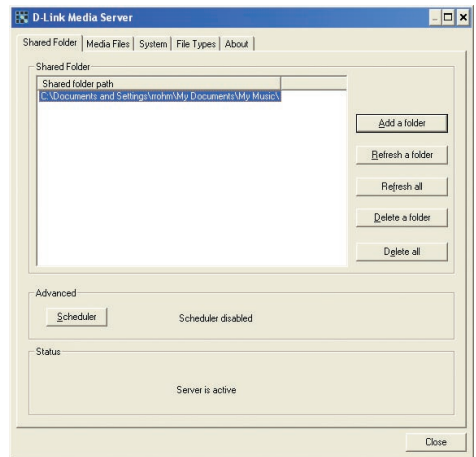
The D-Link Media Server software scans the folders you share when you initially **Add a folder**. If you copy additional files into these folders, they will be seen by the DSM-320 when you refresh the folder contents.

Refresh a folder: To refresh a folder's contents, select a folder by clicking on it and click the **Refresh a folder** button.

Refresh multiple folders: Multiple folders can be selected if you hold down the **Ctrl** key while clicking on each folder. Click on the Refresh a folder button after you've selected all the folders to refresh.

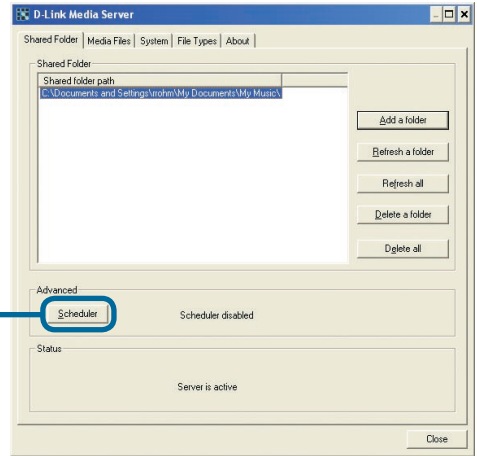
Refresh all folders: All folders can be refreshed by clicking on the **Refresh all** button.

Scheduler: You can schedule the D-Link Media Server software to automatically refresh the contents of all of your folders.

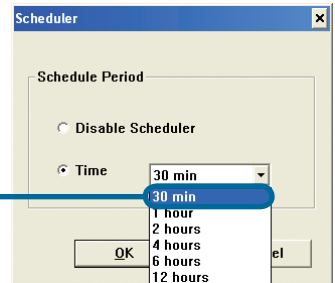


Using the D-Link Media Server Software (continued)

Click **Scheduler** if you want to setup an automatic refresh interval.

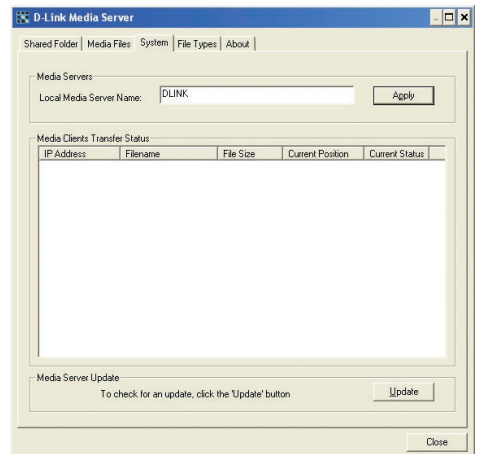


Click **Time** and select a time period. This is how often the server will refresh the folder contents.



Naming the Media Server

The Media Server name, which is displayed when searching for available media servers in the DSM-320 interface, is entered here.

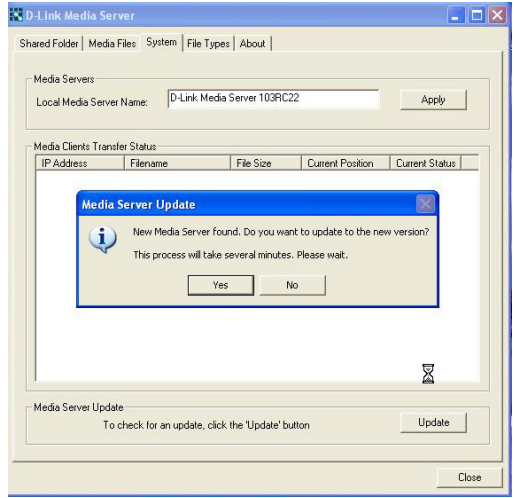


Using the D-Link Media Server Software (continued)

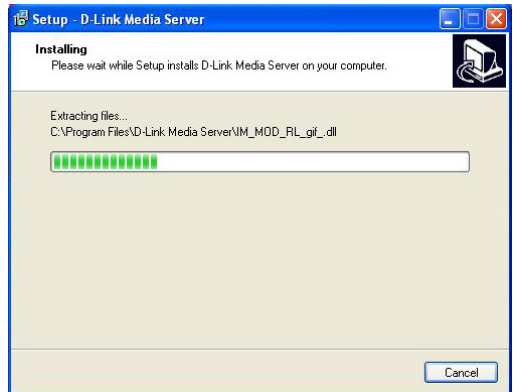
Upgrading the Media Server

Click **Update**, near the lower right corner of this screen, to update the Media Server.

The Media Server Update pop-up screen will appear only if a newer version is available. Click **Yes**.



This screen will appear to indicate that the update is in progress.



You have completed the process for updating the Media Server. Click **OK**.



Using the D-Link Media Server Software (continued)

Stopping the D-Link Media Server

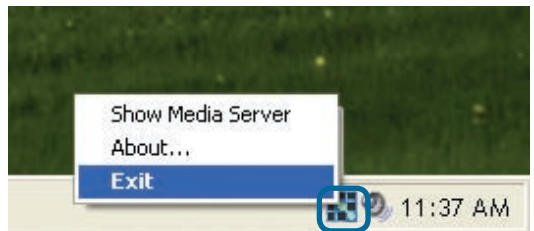
To stop the D-Link® Media Server (and stop sharing your photos, video and music on your PC), right-click on the server icon and select **Exit** from the server menu.

Note: *The photo, video, and music files stored on your computer will be available to your DSM-320 only if the D-Link® Media Server is running. Online media content that does not require PC-based software can still be accessed from the DSM-320 without running the D-Link® Media Server software.*



D-Link Media Server Menu

To open the D-Link Media Server menu, **right click** on the system tray icon. The server menu will then be displayed.



Using Windows® Media Connect Software



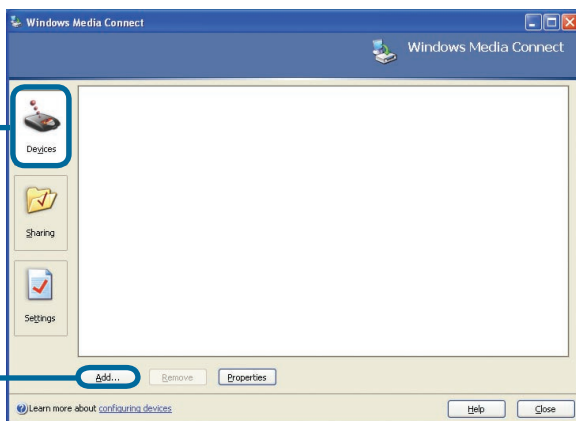
Windows® XP users with Service Pack 2 can utilize the Windows® Media Connect software in addition to or instead of using the D-Link Media Server software. The Windows® Media Connect software allows the DSM-320 to playback DRM (Digital Rights Management) protected files. The Windows® Media Connect software is available via Windows® Update if you are using Windows® XP with Service Pack 2.

Configuring Windows® Media Connect

Launch the Windows® Media Connect software and the window below will appear:

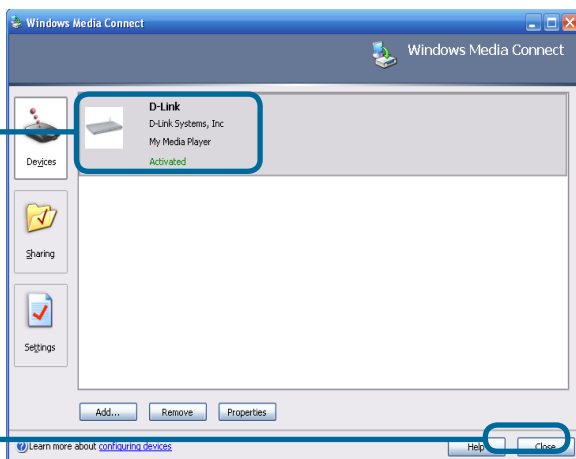
The **Devices** tab is where you add the DSM-320 to the list of devices that interact with Windows® Media Connect.

Click **Add**



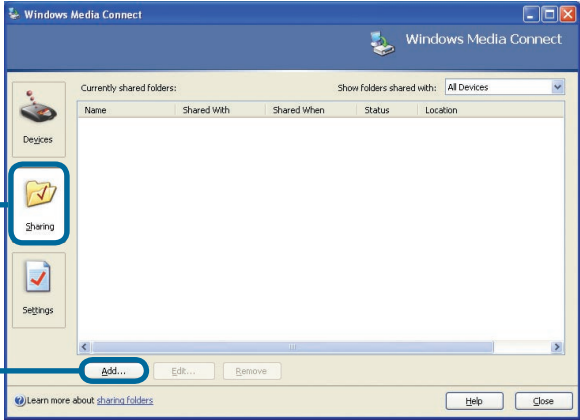
Select your **Media Player** from the list.

Click **OK**



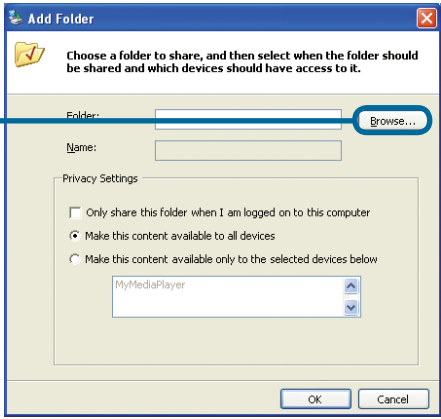
Using Windows® Media Connect Software (continued)

The **Sharing** tab is where you configure the folders that you want to share with your DSM-320.



Click **Add**

Click **Browse**



Select the folder that you want to share

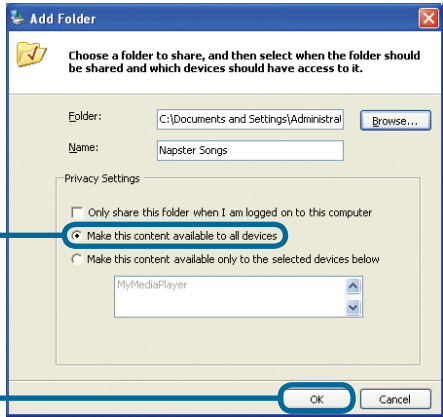
Click **OK**



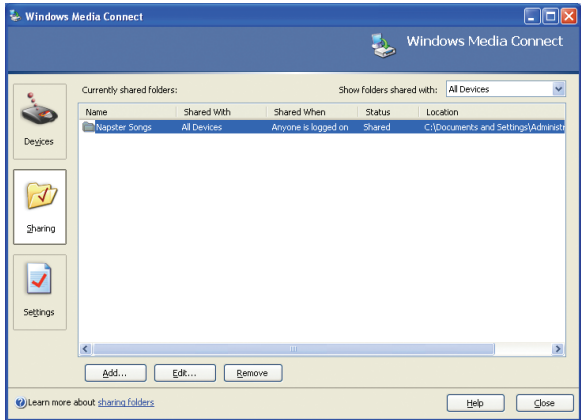
Using Windows® Media Connect Software (continued)

Click **Make this content available to all devices**

Click **OK**



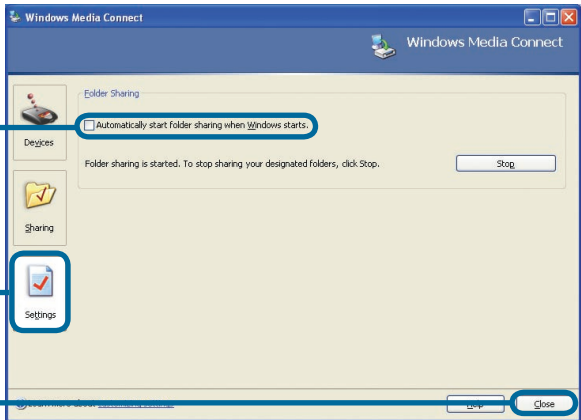
The Shared Folders will appear in the window. Repeat the steps until you've shared all of the folders that you want the DSM-320 to access.



Click **Automatically start folder sharing when Windows starts**

The **Settings** tab allows you to automatically start folder sharing when Windows® starts. You can also Stop/Start sharing.

Click **Close**



Using Windows® Media Connect Software (continued)

The DSM-320 supports additional file types that are not supported by the Windows® Media Connect software. The file types shown below are supported by both Windows® Media Connect and the DSM-320.

| File Type | File Extension | Details |
|-------------------------|---------------------|---|
| Audio | | |
| Windows Media Audio | .wma | Does not support WMA lossless, WMA Pro |
| WAV & AIFF | .wav, .aif, or .ief | AIFF files must be encoded in PCM format only |
| OGG Vorbis | .ogg | Audio using the .ogg extension |
| MP3 | .mp3 | Up to 320kbps |
| Photo | | |
| JPEG | .jpg | Does not support CMYK or YCCK |
| GIF | .gif | Does not support animated gifs |
| BMP | .bmp | non-compressed |
| TIFF | .tif | Does not support CMTK, YMC, YMCK, or KCMY |
| PNG | .png | Non-alpha channel only |
| Video | | |
| Audio Video Interleaved | .avi | MPEG4 layer only, does not support uncompressed AVI Resolution up to 1080i |
| MPEG-1 | .mp1, mpeg, or .mpg | Up to 8Mbps Resolution up to 480p |
| MPEG-2 | .mp1, mpeg, or .mpg | Up to 8Mbps Resolution up to 1080i |

Using Windows® Media Connect Software (continued)

| Playlists | | |
|-----------|------------|--------------------|
| M3U | .m3u, .pls | MPEG Playlist File |
| Subtitle | | |
| SRT | .srt | |

Note: Windows® Media Connect currently does not support Fast Forward and Rewind with protected files.

Be sure to select the Windows® Media Connect server as the default server in the DSM-320 System Setup if you want to access content by using Windows® Media Connect. To do so, press the **SETUP** button on the remote control. Navigate to System by using the **down arrow** and then press **ENTER**. Navigate to View All Servers using the down arrow and press **ENTER** to view a list of available servers.



Connecting the DSM-320

All audio, video, and networking connections are located on the rear panel of the DSM-320.

Video Connections

Be sure the PAL/NTSC switch is set to **NTSC** if you are located in the USA.



Select one of three ways to connect video to your DSM-320:

• Composite Video Connector

Plug the supplied yellow video cable into the DSM-320 and the matching opposite end of the cable to your television input.



Back of TV or VCR

• S-Video Connector

Plug the supplied S-Video cable into the S-Video connector and the opposite end into the S-Video connector on your television.



Back of TV or VCR

• Component Connectors

Match the color coded cables to the matching connectors on the DSM-320 and into the component video input of your television.

Note: This cable is not supplied.



Back of TV

The **VIDEO OUT** button on the remote control toggles between the composite/S-Video output and the component output. If component connectors are used but not selected, the screen will be tinted blue.

Connecting the DSM-320 (continued)

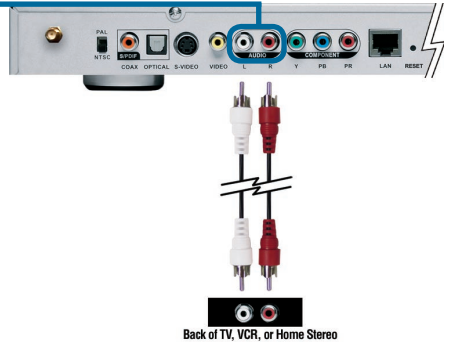
Audio Connections

The **AUDIO OUT** button on the remote control toggles between the composite audio output and the digital audio output (optical/coaxial).

- **Composite Audio**

Plug the supplied red and white connectors into the color-coded matching jacks on the DSM-320.

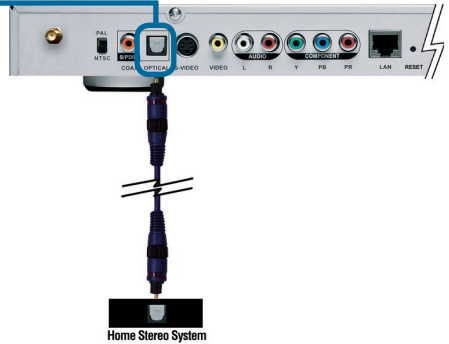
Plug the opposite ends to the matching jacks on your television or audio/video system.



- **Optical Digital Audio**

Connect an optical audio connector into the DSM-320 and the matching opposite end of the cable to the audio input of your audio system.

Note: *This cable is not supplied.*



- **Coaxial Digital Audio**

Connect a coaxial audio connector into the DSM-320 and the matching opposite end of the cable to the audio input of your audio system.

Note: *This cable is not supplied.*



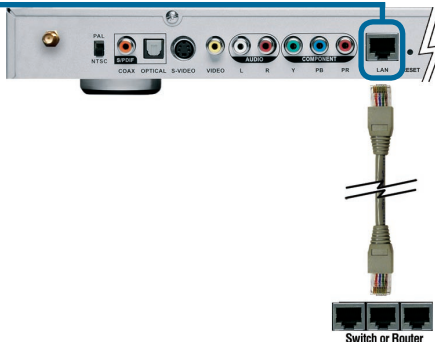
Connecting the DSM-320 (continued)

Network Connections

Select one of two ways to connect a network to your DSM-320:

- **RJ-45 Ethernet Connector**

Connect the supplied Ethernet cable to the network cable connector, and attach the other end to the network.



- **Wireless Antenna**

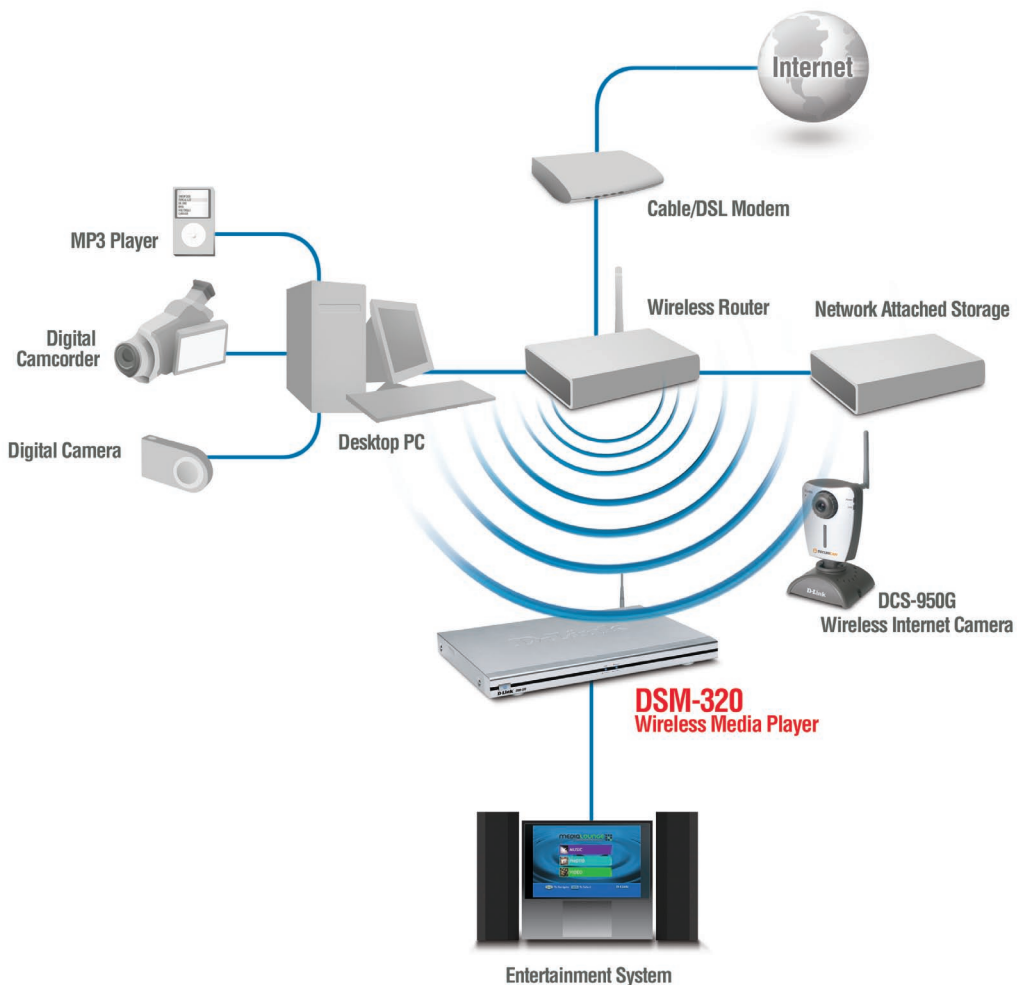
Attach the supplied antenna by threading it onto the antenna connector. Be sure the antenna is secure and in an upright position.



Note: You may have an Ethernet cable plugged into the unit and have the wireless antenna connected. Neither will interfere with the other, but only one network can be accessed at a time (wired or wireless). The network connection type is selected in the Setup Wizard and can be changed by going to the Setup Menu. To access the Setup Menu, press the SETUP button on the remote control.

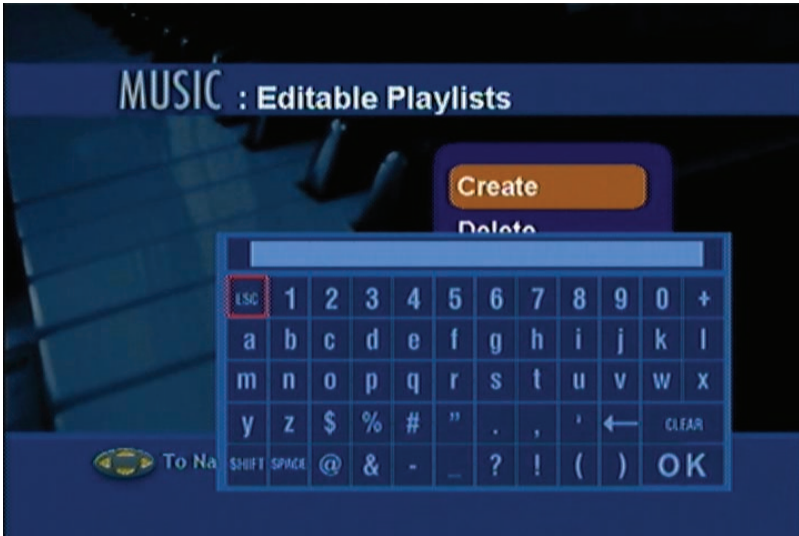
Network Layout

Below is a diagram displaying what your network might look like once all of the connections have been made to the D-Link® DSM-320 Wireless Media Player.



Using the On-Screen Keyboard

Whenever the cursor is in a text field and you need to enter text, press **ENTER** on the remote control and the on-screen keyboard will appear.



The keyboard is used for a variety of functions such as naming your DSM-320 and performing searches for music, photos or video. To use the keyboard, highlight a character with the **arrow** buttons on the remote control and press the **ENTER** button. Text can also be entered by using numbers 2-9 on the remote, just as you would on a cell phone. Highlight **ENTER** and press **ENTER** when you're finished entering text.

Special Keys



The backspace key will erase the previous character.



The shift key will toggle the keyboard between upper and lower case characters.



The clear key will erase all of the characters that have been entered.



The ESC key will close the keyboard.

To exit out of the keyboard screen without making any changes, hit the **RETURN** button on the remote control.

The DSM-320 Setup Wizard

The DSM-320 Setup Wizard is navigated using the **directional arrows** and the **ENTER** button on the remote control. To toggle between the configuration options, use the **up** and **down arrows** on the remote control. To toggle between the Back, Next, and Rescan buttons, use the **left** and **right arrows** on the remote control. Press **ENTER** to select a field or confirm a selection.

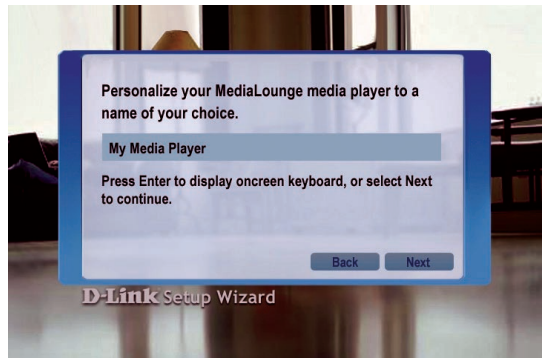
Welcome Screen

During the initial startup, the DSM-320 displays the Setup Wizard Welcome screen. Press **ENTER** on the remote control to proceed to the next screen.



Personalize your MediaLounge

If you would like to change the name of the Media Player, press **ENTER** on the Remote Control to display the on-screen keyboard. To proceed to the next page, use the **down arrow** button on the remote control to navigate to the Next button and press **ENTER**.



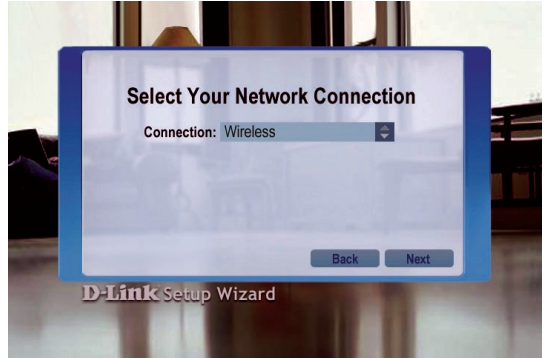
The DSM-320 Setup Wizard (continued)

Select Your Network Connection

The connection type defaults to Wireless.

Wireless

If using a wireless network, press the **down arrow** on the remote control to navigate to the Next button. Once the Next button is highlighted, press **ENTER** on the remote control to proceed to the next screen.

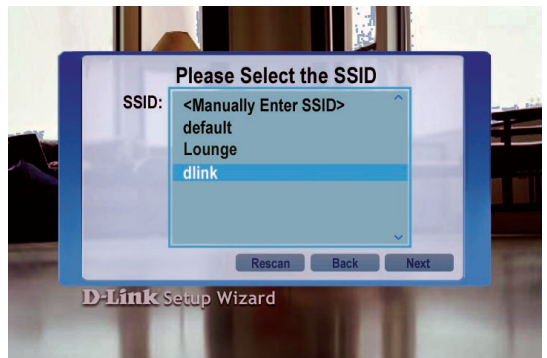


Wired

To select Wired, press the **ENTER** button on the remote control while the Connection is highlighted. Press the **up arrow** on the remote control to choose Wired. Press **ENTER** again to make the selection and then press the **down arrow** on the remote control to navigate to the Next button. Once the Next button is highlighted, press **ENTER** on the remote control to proceed to the next screen. Skip to the Current Network Settings screen on page 40.

Select the SSID

Select the SSID (network identifier) that is being used by your wireless network. To select an SSID, press **ENTER** on the remote control while the SSID window is highlighted. Use the **up arrow** and **down arrow** buttons on the remote control to navigate through the list. Once you've highlighted the correct SSID, press **ENTER** on the remote control. Press the **down arrow** on the remote control to navigate to the Next button.



The Rescan button will refresh the list of available networks. Use the **left arrow** and **right arrow** to navigate from the Next button to the Rescan button. If you cannot locate the SSID, select <Manually Enter SSID> and you will be able to enter it on the next screen.

The DSM-320 Setup Wizard (continued)

Current Wireless Settings

Your current wireless settings are displayed based on the SSID you selected in the previous step. If you chose to enter the SSID manually, then the default settings are entered.

SSID

The SSID name selected on the previous screen appears here. You can change the SSID you selected or enter one manually by pressing the **ENTER** button

on the remote control with this field highlighted. The on-screen keyboard will be displayed and you can enter the SSID.

Mode

There are two different modes to select from: Ad-Hoc and Infrastructure Mode. Ad-Hoc Mode is used for peer to peer wireless networks that do not contain a router or an access point. Infrastructure Mode is used for networks with an access point or router. To toggle between the two, press the **ENTER** button when Mode is highlighted. The **up arrow** and **down arrow** will toggle between the two options. Press **ENTER** again to select.

WEP

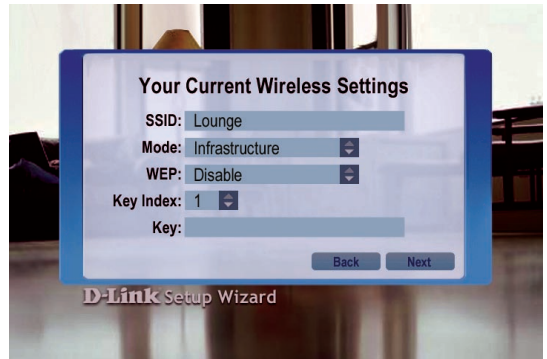
WEP (Wired Equivalent Privacy) is an industry standard encryption technology used by wireless devices. There are five options configurable under this setting, Disable, 64-bit Hex, 128-bit Hex, 64-bit ASCII, and 128-bit ASCII. To toggle between the options, press the **ENTER** button when WEP is highlighted. The **up arrow** and **down arrow** will toggle between the three options. Press **ENTER** again to select.

Key Index

Select a number between 1 and 4. To toggle between the options, press the **ENTER** button when Key Index is highlighted. The **up arrow** and **down arrow** will toggle between the four. Press **ENTER** again to select.

Key

To connect to an encrypted wireless device, the key you enter here must match the key of the device exactly. Press the **ENTER** button on the remote control with this field highlighted to enter a key. The on-screen keyboard will be displayed and you can enter the key.



The DSM-320 Setup Wizard (continued)

Key (continued)

Keys are defined by entering in a string in HEX (hexadecimal - using characters 0-9, A-F) or ASCII (American Standard Code for Information Interchange – alphanumeric characters) format.

| Encryption | 64-bit | | 128-bit | |
|------------|------------------|------------|------------------|--------------------------------|
| | Character Length | Example | Character Length | Example |
| HEX | 10 | 12345678FA | 26 | 456FBCDF12340012222527 1730 |
| ASCII | 5 | DMODE | 13 | 2005PIECAKES1 |

After entering the appropriate wireless settings for your network, use the **down arrow** to navigate to the Next button. Press **ENTER** on the remote control to proceed to the next screen.

Current Network Settings

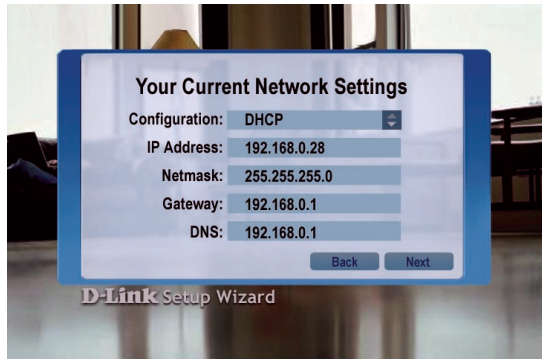
Your current network settings are displayed and can be modified at this point. DHCP is the default setting. The DHCP option allows your DHCP enabled device to assign the IP configuration to the DSM-320.

DHCP

If your network has a DHCP server then press the **down arrow** on the remote control to navigate to the Next button. Once the Next button is highlighted, press **ENTER** on the remote control to proceed to the next screen.

Static

If using a static IP address, press **ENTER** on the remote control with Configuration highlighted. The **up arrow** and **down arrow** toggle between the options. Press **ENTER** to make a selection. The on-screen keyboard or numbers on the remote are used to enter your address settings. Be sure to enter a unique IP address within the same range as the network. After entering the appropriate settings for your network, use the **down arrow** to navigate to the Next button. Press **ENTER** on the remote control to proceed to the next screen.

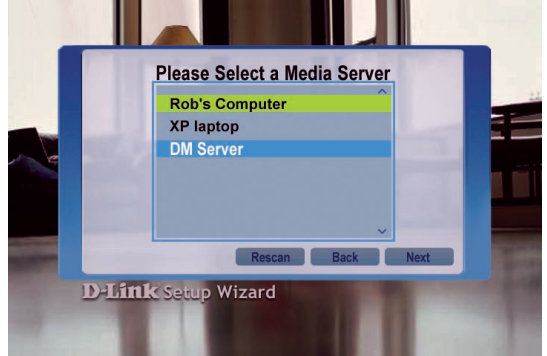


Please see the Glossary for an explanation of DHCP and static IP addresses.

The DSM-320 Setup Wizard (continued)

Select a Media Server

Select a Media Server from the list by pressing the **ENTER** button on the remote control with the Media Server list highlighted. Use the **up arrow** and **down arrow** to navigate through the list of servers. Press **ENTER** again to select a Media Server. Use the **down arrow** to navigate to the Next button.



Rescan will refresh the list of available Media Servers. Use the **left** and **right arrows** to navigate between the Next and Rescan button.

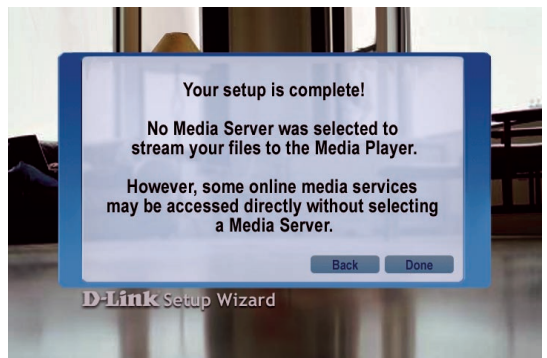
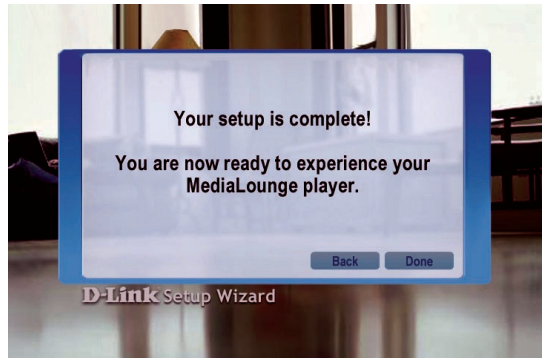
A Media Server is any PC running the D-Link Media Server software or UPnP AV compliant device on the network that can communicate with the DSM-320.

Setup is Complete

Press **ENTER** on the remote control with Done highlighted to complete the setup.

Your MediaLounge™ DSM-320 is now ready to stream music, photo, and video content for enjoyment on your home entertainment center.

If you do not have a Media Server configured, you are still able to complete the Setup Wizard. This allows you to use the Online Services that do not require a Media Server.



DSM-320 Menu

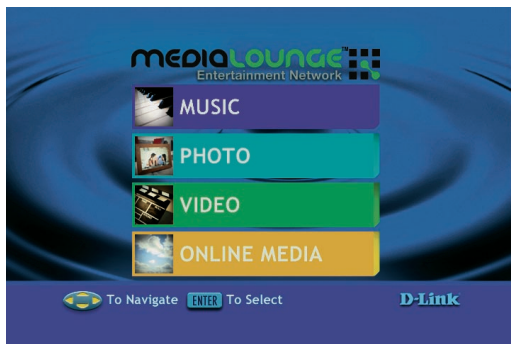
Menu Basics

The DSM-320 uses an on-screen menu interface. As you move through the menus, you will use the **selection arrows** on the remote control to move up, down, right and left. The highlight bar moves from item to item as you press the selection arrows. In some instances you will need to press **ENTER** on the remote control to access the pulldown menu within an item. You will then see an arrow within the highlighted bar. These arrow “hints” help you with menu navigation, and show you the possible paths you may take. For example, a **down arrow** hints that more items are available if you move the highlight bar down. To move to the next menu screen, use the **right arrow**. Similarly, use the **left arrow** to move to the previous screen.

Menu Home

The menu home screen is the top level menu. You will see one of the two home screens shown below. The top screen appears if you have the D-Link Media Server software up and running on your network. The bottom screen appears if you are using third party server software.

From this home screen, you can access MUSIC, PHOTO, VIDEO, or ONLINE MEDIA. To jump directly to the home screen, press the **HOME** button on the upper right corner of the remote control.



If a D-Link Media Server is not detected, this home screen appears. The MY MEDIA button will initially display your server options (if available). Once you select a server, the available media will appear. To jump directly to the home screen, press the **HOME** button on the upper right corner of the remote control.



Music



Music Quality

Your music listening experience on the media player depends upon the quality of your digital music files on your PC. Avoid quality settings below 48kbps as they are unsupported. For CD quality music, rip your MP3s at 128kbps or higher, with a sample rate of 44.1kHz.

Supported Music Formats

The following music file formats are supported:

■MP3 (up to 320kbps)

MPEG-1, Layer 3 Audio file -The standard Internet music file format. This is the most commonly used audio format.

■WMA (Does not support WMA lossless, WMA Pro)

Windows® Media Audio file - Supported by the Microsoft Windows® Media player and some music jukebox programs.

■WAV

WAV was developed by Microsoft and IBM. WAV sound files end in .wav and are compatible with Windows® applications supporting audio.

■AIFF (AIFF files must be encoded in PCM format only.)

AIFF (Audio Interchange File Format) was developed by Apple Computers and is the standard audio format for Macintosh computers. File extensions are .AIF or .IEF.

■MPEG 1 and MPEG 2

Moving Pictures Experts Group created standards for compressing audio and video. Audio uses the file extension .mp3.

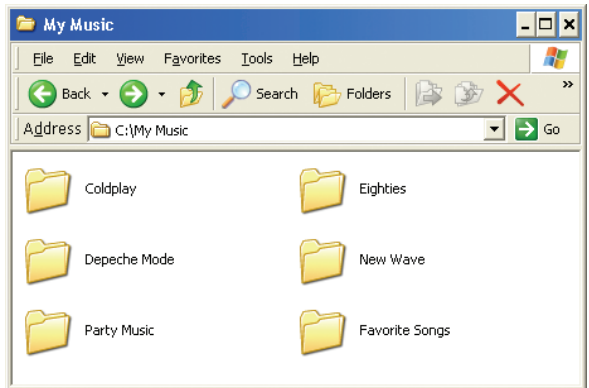
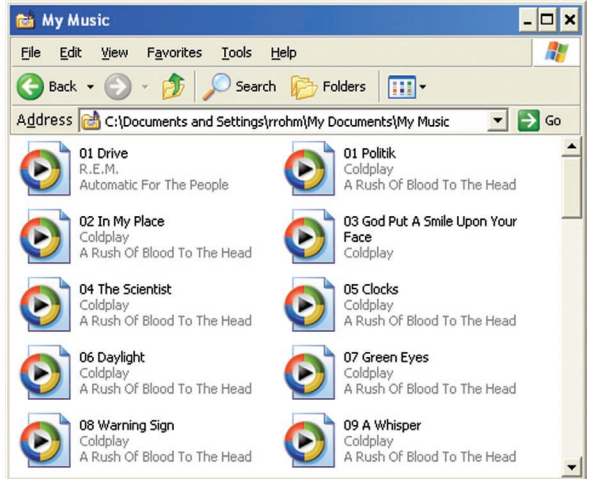
■OGG Vorbis

Open source audio format. Uses the file extension .ogg.

Music (continued)

Organizing Music Files

Music files are located on your PC and can be contained in one directory folder, or organized in several subfolders.

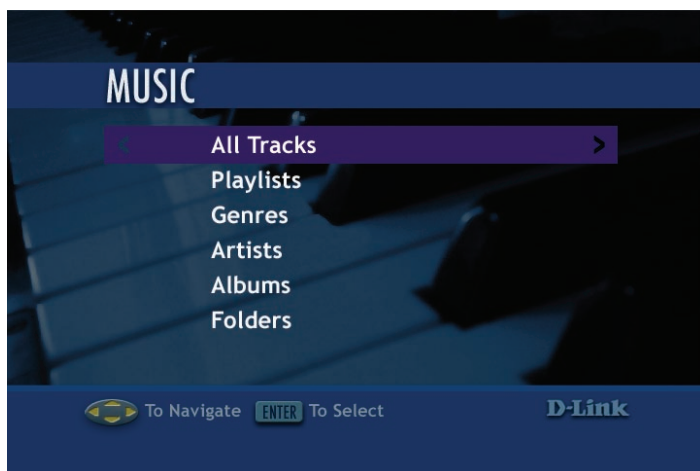


The DSM-320 automatically organizes your music files by genres, artists, albums, and tracks. This information is obtained from the ID3 tags in each of your music files. The ID3 tag is created for you when you rip (copy) your music from your CD. However, if your music files have incorrect or incomplete tags, the tracks may not appear where they should in your music categories.

Music (continued)

Playing a Track

Once you enter the music menu, there are several ways that you can view tracks. You can view all tracks, playlists, tracks by genre, artist, album, or folder name. Use the **selection arrows** to navigate to the track you wish to play. Once you have located the appropriate track, highlight it and press **ENTER** or **PLAY** on the remote control. The track will begin playing on your stereo or television speakers.




To play a track starting from the main home screen:

1. Select the **MUSIC** category from the Home page or click on the **MUSIC** button on the remote control.
2. Select a viewing category. Use the **down arrow** and **up arrow** on the remote control to navigate to a viewing category (by All Tracks, Playlists, Genres, Artists, Albums, or Folders). Select the option by clicking **ENTER** or the **right arrow** on the remote control
3. Select a Track. Use the **up arrow** and **down arrow** buttons to navigate one track at a time. The **PAGE up** and **PAGE down** buttons can be used to navigate through the track list one page at a time.
4. After the appropriate track is highlighted, press **ENTER** or **PLAY** on the remote control.

Music (continued)

Creating a Preset

To create a preset, follow the steps below:

1. Select the **MUSIC** category from the Home page or click on the **MUSIC** button on the remote control.
2. Select a viewing category. Use the **down arrow** and **up arrow** on the remote control to navigate to a viewing category (by All Tracks, Playlists, Genres, Artists, Albums, or Folders). Select the option by clicking **ENTER** or the **right arrow** on the remote control
3. Select a Track. Use the **up arrow** and **down arrow** buttons to navigate one track at a time. The **PAGE up** and **PAGE down** buttons can be used to navigate through the track list one page at a time. Highlight the track to define as a preset.
4. Press the number of the preset you want to assign to this track. Select a number between 1-9 on your remote control. If you select the number 1, hold the number 1 key down until the preset number icon  appears next to your selection after about five seconds. The number of the preset you selected will remain next to the track. If you selected a number that has already been assigned to another song, the previous selection will no longer be defined as a preset. **Note:** *Presets cannot be erased but can be replaced by another selection.*

After creating a preset, you can play the preset any time the DSM-320 and the PC containing the tracks are powered on by pressing the preset number on your remote control. The song files on your PC must remain in the same folder location that they were in when the preset was created.

You can play your favorite preset during a slideshow presentation by pressing the number of the preset during the slideshow playback.

Music (continued)

Browsing for Music

There are many ways to browse for a music track. For example, let's use the following music file located in the following shared location:

c:\Documents and Settings\Admin\My Documents\MyMusic\Swing\Kalamazoo.mp3

Kalamazoo.mp3

Artist: Glen Miller

Album: Swing

Genre: 40s Swing

To browse for this track in the track list:

1. Select **All Tracks**
2. Highlight **Kalamazoo**

To browse by artist:

1. Select **Artists**
2. Select **Glen Miller**
3. Select **Swing**
4. Highlight **Kalamazoo**

To browse by album:

1. Select **Albums**
2. Select **Swing**
3. Highlight **Kalamazoo**

To browse by genre:

1. Select **Genres**
2. Select **40s Swing**
3. Select **Glen Miller**
4. Select **Swing**
5. Highlight **Kalamazoo**

To browse by folder:

1. Select **Folders**
2. Select **My Music**
3. Select **Swing**
4. Select **Kalamazoo**

Also see the SEARCH function on page 64 for additional search options.

Music (continued)

Creating Music Playlists using 3rd Party Software

Use your favorite music software on your PC to create music playlists. A playlist allows you to specify exactly what tracks to play and in what order to play them. For example, create a “favorites” playlist and just listen to your favorite tracks. Save the playlist in the industry standard **.m3u** playlist format.

The DSM-320 will play tracks from playlists you create on your computer. The media player supports playlists in two standard formats:

- **m3u** MPEG Playlist File
- **pls** MPEG Playlist File

Software for playing music on your PC can be used to create playlists. **WinAmp™** and Microsoft Windows® Media Player™ are two examples.

Playing a Playlist

To play all the tracks in a playlist, highlight the playlist name and press the **PLAY** button. All tracks will be played in the order they appear in the playlist.

Controlling Music Playback

Your DSM-320 works just like a stereo or CD player. Controlling your music playback will be an easy and natural experience. Use the remote to **PLAY**, **PAUSE**, or **STOP** music.

Playing a Group of Songs

Highlight any folder and press the **PLAY** button on the remote control. All of the songs within the selected folder will be played. You can highlight a genre of music and all files that are associated with that genre will be played. Genre categories are defined when an audio file is created.

You can play songs within a folder from a specified track forward. For instance, if you have a folder with ten tracks and select Track 3, clicking on the **PLAY** button will play tracks 3 through 10. **Note:** *If you press the **ENTER** button on the remote control instead of the **PLAY** button, only the selected track (Track 3) is played.*

Playing Individual Songs

Individual songs can be played by highlighting a song and pressing **ENTER** on the remote control.

Music (continued)

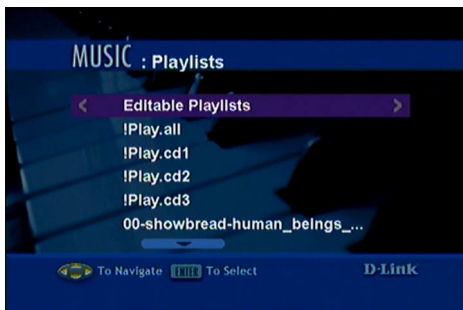
Creating an Editable Playlist

An Editable Playlist is a file that only works with **MediaLounge™** products. It is stored in your PC media server.

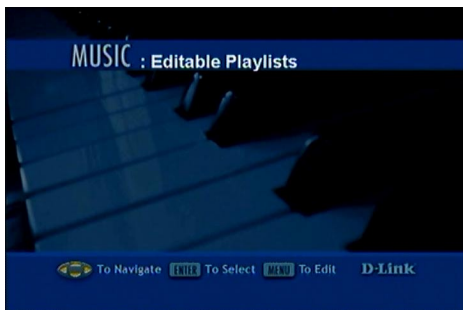
1. Select the **MUSIC** category from the Home page or click on the **MUSIC** button on the remote control.
2. Select **Playlists**.



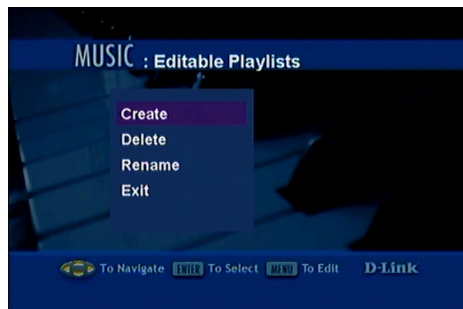
3. Select **Editable Playlists**.



4. When the **Editable Playlist** screen appears, click **MENU** to edit.



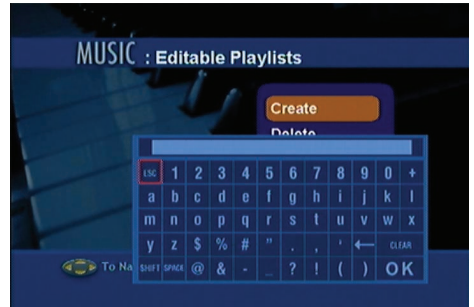
5. Use the **down arrow** and **up arrow** on the remote control to navigate to **Create**. Click **ENTER** or the **right arrow** on the remote control to select.



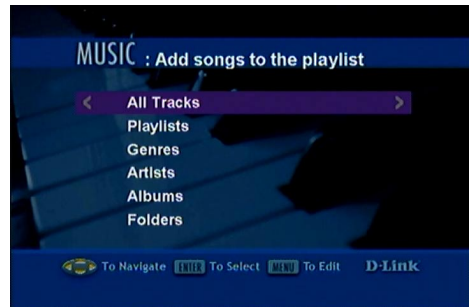
Music (continued)

Creating an Editable Playlist

5. When the keyboard appears, type in the title for your new playlist. After you have typed in the title, click **ENTER** to select.



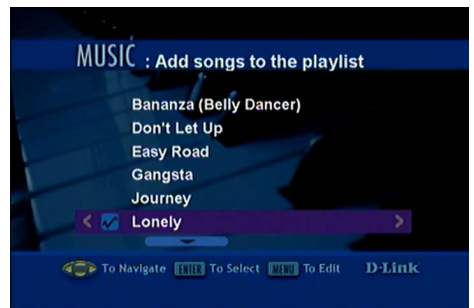
6. When the **Add Songs to the playlist** screen appears, make your selection from the following options: All Tracks, Playlists, Genres, Artists, Albums or Folders. (**All Tracks** is selected here). Click **ENTER** to select.



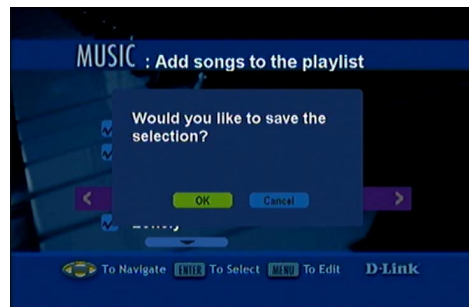
7. Scroll up or down the list of songs, and click **ENTER** to select a song for the playlist.

The “checked” icon will appear as you make the selection.

When you have completed all your selections and wish to save the playlist, click MENU.



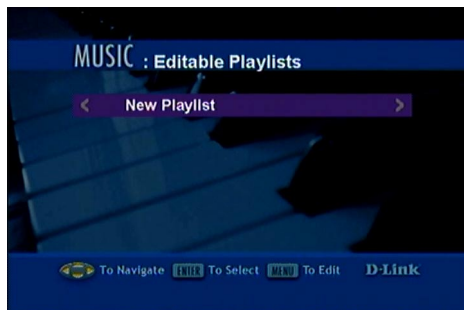
8. After you click MENU, a pop-up window will appear: Would you like to save the selection? Click OK.



Music (continued)

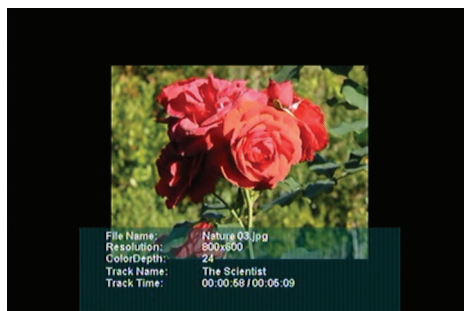
Creating an Editable Playlist

9. You have completed the creation of an Editable Playlist! You can now enjoy your selections.



“Now Playing”

The “Now Playing” feature allows you to display information about which song file is currently playing in the background. Press **Display** on the remote to activate “Now Playing”.



Music (continued)

Viewing Photos while Music is Playing

Your DSM-320 is capable of displaying photos and playing background or preset music simultaneously.

Background Music: You can start background music by playing a song in **MUSIC** mode. Go to **PHOTO** mode and start your photo slideshow. The **0** key on the remote control stops and starts your background music from the beginning.

Preset Music: To play presets during your slideshow, simply press a number on the remote control that corresponds with an existing Preset. The appropriate song will begin playing (See Creating a Preset on page 46 for additional details).

Shuffle and Repeat

You can turn on the repeat function to continuously play individual tracks, playlists, or tracks within a folder.

When you are playing or repeating a group of tracks, you can randomize the play order by pressing the **SHUFFLE** button on the remote control.



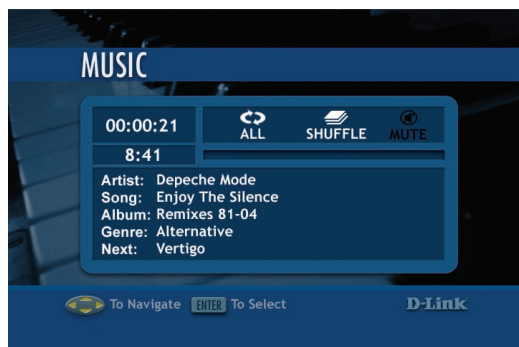
To repeat a track or a group of tracks, click **REPEAT** on the remote control. When the icon with the text REPEAT below it appears, you are in the repeat current track mode.



When the repeat icon with the ALL text below it appears, you are in Repeat All mode. This will repeat all of the tracks within your currently selected folder or playlist.



When you select a music track, information about the song is displayed (if available), as shown here.



Photo

Supported Photo Formats

The following photo file formats are supported:

- **BMP** (non-compressed)
Windows® bitmap file. Widely used in Microsoft Windows® for pictures and backgrounds.
- **JPEG** (grayscale, RGB, YCbCy)
(Does not support CMYK, YCCK.)
The JPEG format is the Internet and digital photo format standard used by most digital cameras.
- **GIF**
(Animated GIF's are not supported)
Older format still widely available on the internet for photos, web pages, and clip art.
- **PNG** (Non-alpha channel only)
Portable Network Graphics standard created in response to limitations in the GIF file format.
- **TIFF** (RGB)
(Does not support CMYK, YMC, YMCK, KCMY)
Tagged Image File Format is a raster file format.
- **JPEG2000**
JPEG2000 is a new image format based on the latest compression technology.

Photo (continued)

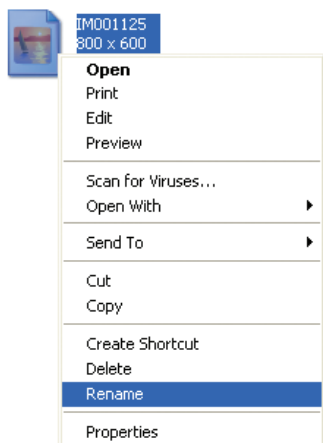
Organizing Photo Albums

Unlike music files, photos contain little information about their content. Therefore, photos are organized by their filename and by the folder they are in. Many digital cameras will organize your photos into folders when you connect and unload them to your PC. Each time you dock or connect, a new folder is created using the current date and time, and all photos are copied into that folder.

To simplify browsing on your DSM-320, you can create folders on your PC. For instance, create a folder in the My Pictures directory called **Vacation** and copy all of your vacation photos into it. Your DSM-320 will show the **Vacation** folder. To play a slideshow of the folder, highlight it and press the **PLAY** button. To view a list of photos in the folder, highlight it and press the **right arrow** button.

You can give your photos meaningful names by renaming the files on the PC. Most digital cameras number photos sequentially. For example, rename the photo **IM001125.jpg** to **sunset.jpg** on your PC. The photo will be displayed as **sunset.jpg** on your DSM-320*.

Right-click on the file and select **Rename**.



If the file extension does not appear as part of the name displayed when you select rename, then it is not necessary to enter the file extension (**.jpg**) at the end of the filename. To rename IM001125.jpg to sunset.jpg, type in **sunset** and hit Enter on your computer's keyboard.



sunset

If the file extension appears as part of the name when you select rename, then be sure to include the extension when renaming the file. To rename IM001125.jpg to sunset.jpg, type in **sunset.jpg** and hit Enter on your computer's keyboard.

You can create as many folders as you need. Create a folder for the year, then create folders inside for each of the months, and then folders in each month for special occasions (birthday, vacation, holidays, etc...).

**Folder creation and renaming files must be done on the PC via standard Windows® procedures.*

Photo (continued)

Playing a Photo Slideshow

To start playing a photo slideshow, highlight a folder and press the **PLAY** button. The first photo will be displayed and then followed by the next photo in the folder. All photos in the folder will be displayed.

Controlling Photo Playback

Controlling photo playback is very similar to controlling a CD player. Once you have started a photo slideshow, use the remote to **PLAY**, **PAUSE**, or **STOP** the show. Press the **PREV** and **NEXT** buttons to skip to the previous or next photo. To set the amount of time before the next photo in a slideshow is displayed, click **SETUP** on your remote and select **Miscellaneous**. You can set the slide show delay at an interval between 1 second and 2 minutes.

Shuffle and Repeat

Photos are displayed in alphabetical order by filename. During slideshow playback you can shuffle the order by pressing the **SHUFFLE** button on your remote control. Shuffle automatically enables the repeat function.

To repeat all of the photos in a slideshow, press the **REPEAT** button on the remote control during the slideshow before the end of the slideshow. If the last image in the folder is displayed before you press repeat, then you must go to the previous page and start the slideshow again. Be sure to press the **REPEAT** button before you see the end of slideshow image in the upper right corner of the screen. Below are the icons you will see in the upper right corner.



Shuffle on



Shuffle off



Repeat all



Repeat off



End of slideshow



Pause



Invalid option selected



Play

Photo (continued)

Viewing Photo Information

To view information about a photo, highlight the photo and press the **DISPLAY** button.



Photo (continued)

Photo Viewing Effects

When viewing a photo you can change the on-screen appearance by applying rotate, pan, and zoom effects. These on-screen effects are only for enhancing the on-screen view and are not saved to the actual file. To access the photo viewing effects, press the **MENU** button on the remote control while viewing the photo that you want to manipulate. To select an effect, highlight the effect using the arrow keys on the remote control and press **ENTER** on the remote control to select the effect.



Rotate clockwise 90 degrees: Selecting this option will rotate the image clockwise 90 degrees every time it is selected.



Rotate counter-clockwise 90 degrees: Selecting this option will rotate the image counter-clockwise 90 degrees every time it is selected.



Rotate 180 degrees: Selecting this option will rotate the image 180 degrees every time it is selected.



Pan: When this option is selected, you can move the image using the **arrow** buttons on the remote control.



Zoom: Use the down or right arrow to zoom in on an image. Use the up or left arrow to zoom out. The image can zoom 5 steps either direction.



Exit: Use this button to exit from the effects menu or you can select the **MENU** button on the remote control.

Video

Supported Video Formats

The following video file formats are supported:

- **MPEG-1** (up to 8Mbps)
- **MPEG-2** (up to 8Mbps)
- **MPEG-4** (ASP - Advanced Simple Profile)*
- **AVI** (MPEG4 layer only, does not support uncompressed AVI)
- **XVID** (with MP3 and PCM)

* Advance Simple Profile only, without quarterpixel and global motion compensation.



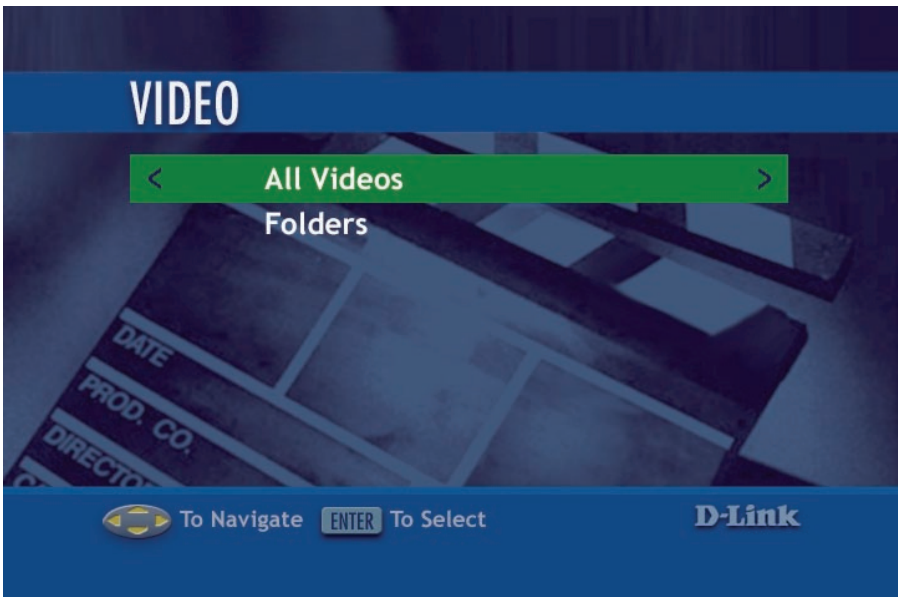
Viewing a high-bitrate encoded video (above 6Mbps/sec) over a WLAN, may cause some video quality issues, and/or cause a delay in network traffic.

Viewing a Video

Once you enter the **Video** menu, you can view your list of videos.

Use the **selection arrows** to navigate to the video folder you wish to view. Highlight and press **ENTER** to view the video folder.

After you have selected a video folder, scroll down and highlight the video you wish to view and press **ENTER** or press **PLAY** to view the video.

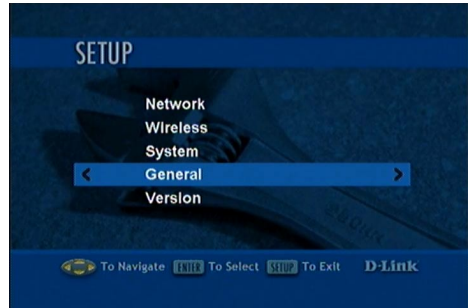


Video (continued)

How to use the 'Search Video by Time' feature

Besides the **FF/RWD** option, your media player also supports searching a video by time. This option is called **Jump** in the Setup menu. You will need to choose which you prefer before watching a video.

1. Select **SETUP** on the remote control unit. Scroll down and select **General**.
2. Scroll down and press **ENTER** to select **Audio/Video**.
3. Scroll down and press **ENTER** to select **Video Seek Mode**. There are two options: **FF/Rev** and **Jump**. **FF/Rev** is the standard option. With **Jump**, you can “jump” to the time you select within the video. In this window, **FF/Rev** is selected for the **Video Seek Mode**.



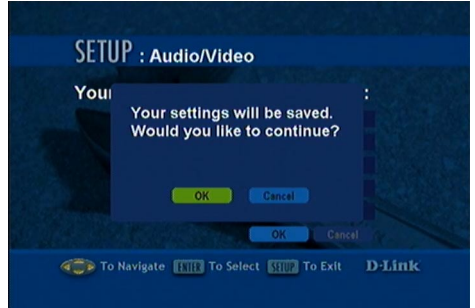
Please select **Video Seek Mode** before viewing your video. Once you make this selection, it will apply to all subsequent viewings, until it is changed. You cannot change the setting **during** video viewing, only before.

4. **Jump** is selected here in **Video Seek Mode**. In the next few pages we will explain the **Jump** setting.

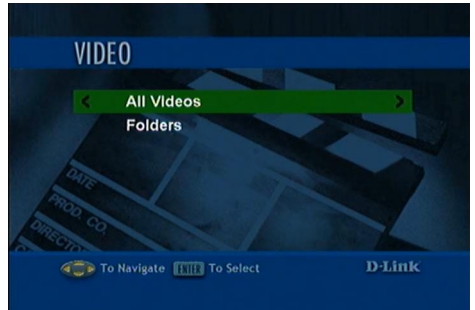
Video (continued)

Search Video by Time (continued)

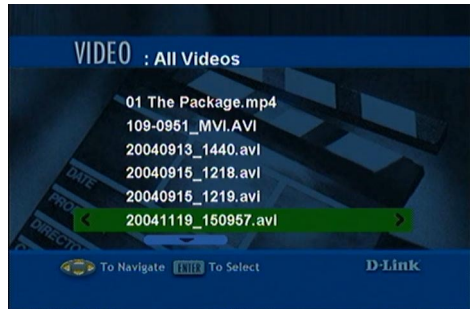
1. To select **Jump** in **Video Seek Mode**, click **OK**. The pop-up screen shown here will display. Click **OK**.



2. To use the new **Jump** setting with your video viewing, select **VIDEO** on your remote. Make your selection in the Video category by scrolling and pressing **ENTER**.



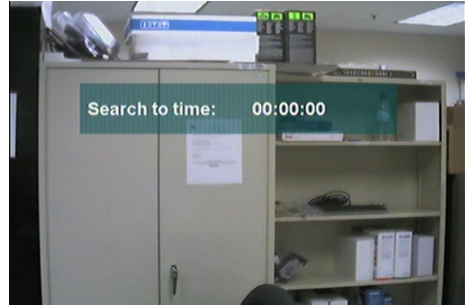
3. Select the video file to be viewed, by scrolling and pressing **ENTER**.



Video (continued)

Search Video by Time (continued)

1. Press **Search** while the video is playing and you will see this pop-up window. Enter the hour, minute, and second that you want the video to “jump” to. If you choose not to use this feature, press **Search or Return**.



2. If you choose to “jump” to a scene (e.g. 14 minutes and 23 seconds) in time, simply use the remote and enter 1423 and press **ENTER**.

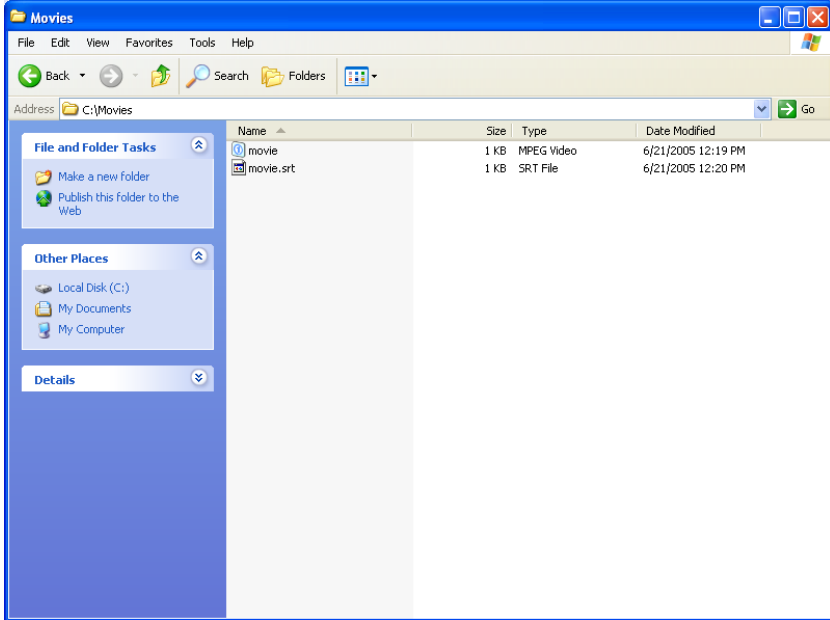
After you press **ENTER**, the video will “jump” to the time frame that was selected.



Video (continued)

Subtitles

Your media player supports the display of the SRT subtitle file format. To use it, make sure that it is in the same folder as your movie file and that they are both named exactly the same.



Simply start the video file and the subtitles will show at the bottom of the screen.



Tools to generate SRT files can be found online.

Video (continued)

Using the Remote Control with Videos

ENTER - Click **ENTER** to play your highlighted video.

PLAY/PAUSE - To pause the video and to resume playing the video.

+ (VOLUME) - To increase the volume.

- (VOLUME) - To decrease the volume.

MUTE - To silence the audio portion of the video.

FF - To fast forward through the video.

DISPLAY - To view the track time; the resolution and the bit rate.

REPEAT - To repeat the video after viewing it.

Below are the on-screen indicators when a button is pressed. These icons will appear in the upper right corner of the screen:



Pause



Play



Repeat



Repeat off



Mute sound



Fast Forward



Invalid option selected



Fast Rewind

Search

Click the **SEARCH** button on the remote control and the screen below will appear. This screen allows you to search for music tracks, videos, or photos.

Use the **up** and **down arrows** on the remote control to navigate through the options. Press **ENTER** on the remote control to make a selection. Use the **down arrow** to navigate to the next field.

Media Type: You can select All types of media or specify music, photo, or video.

Search Type: There are two options available under the Search Type.

- **Starts With** will search for files that begin with the characters entered in the *Search For:* field.

For example, a Starts With search for **en** would bring up the following:

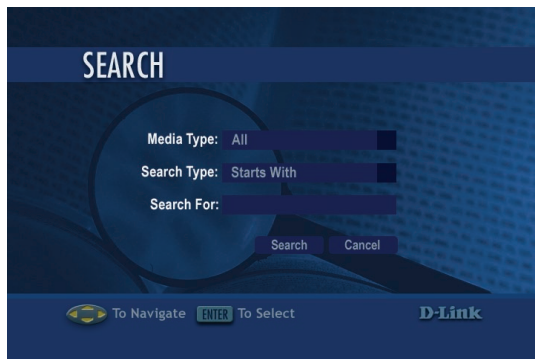
Enjoy The Silent Thunder
Enter Sandwich Castle
Endless Laughter

- **Contains** will search for files that contain the specified characters anywhere in the file name.

For example, a Contains search for **en** would bring up the following titles:

This is the **End** of the Beginning
The Unforgiv**en** of San Juan
The Worst Pret**ender**
Enjoy The Silent Thunder
Enter Sandwich Castle
Endless Laughter

Search For: To enter text, arrow to the field to highlight it, press **ENTER** on the remote control and the on-screen keyboard will appear. Enter the title you are searching for. The more detailed you are, the more accurate the results will be. The search feature will locate all titles that contain the text you entered that match the media type selected. To begin a search, use the **down arrow** to navigate to the **SEARCH** button and press **ENTER**.

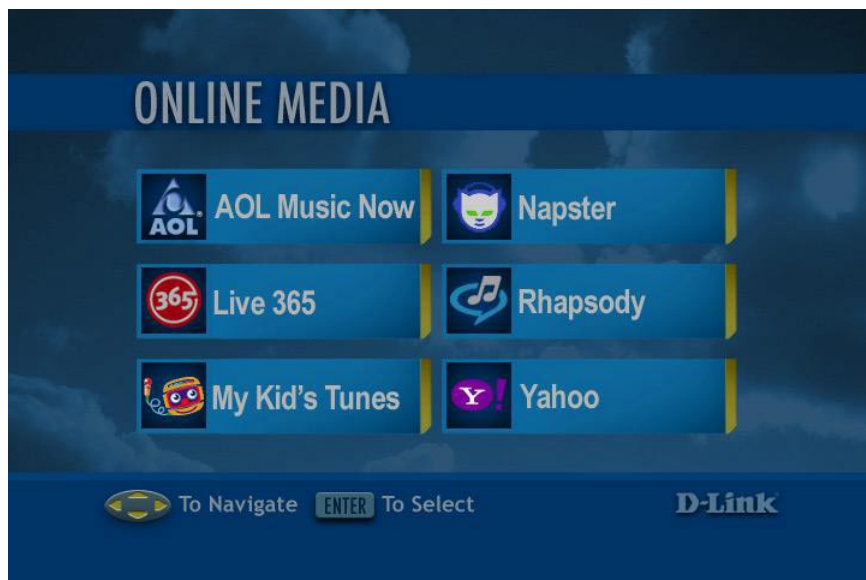


Online Media

Currently the DSM-320 supports Rhapsody™¹, My Kids Tunes™ and Live365™ online services. Content downloaded from Napster™² can also be used with your DSM-320.

New services will be added in the future and made available via firmware upgrades. If your DSM-320 is configured to perform firmware upgrades automatically (see **Version** on page 89 for details), then you will see new options as soon as they become available.

To access the Online Media section, select **Online Media** from the Home screen or click the ONLINE MEDIA button on your remote control.



¹ Rhapsody™ is available for USA customers only.

² Napster™ is available for USA, Canada, and England customers only.

Online Media (continued)

AOL Music Now

AOL Music Now provides access to over 2.5 million songs and thousand of videos.

Visit <http://aol.musicnow.com/> for more info.

Files downloaded with AOL Music Now use Windows® Media DRM. This is a type of copy protection. These files can be played on the DSM-320 if you use a UPnP™ AV media server software (such as Windows® Media Connect or Windows® Media Player 11). For details on configuring Windows® Media Connect, please refer to page 27 of the manual.

Play over 2.5 Million Songs and Thousands of Videos on Demand. [Take a Free Trial Today.](#)

AOL music now
powered by AOL Entertainment

Already Registered? [Sign In Here](#) | [Customer Support](#)
[IM THIS](#) [EMAIL THIS](#)

Artist

OVER 2,500,000 SONGS. THOUSANDS OF VIDEOS. ON DEMAND. ANYTIME.

Play unlimited, full-length songs and music videos for one low monthly fee.

TRY IT FREE FOR 30 DAYS

- Easily search and browse your favorite artists and genres.
- Tune in to AOL® Radio with XM® and thousands of other stations.
- Enjoy thousands of daily mixes and Member playlists.

Always on the Go? Take Your Music With You.
Get all the benefits of a Music Now On Demand subscription and the ability to take over 2,500,000 songs and videos wherever you go

[Learn More](#)

Have a Promotion Code?
[Click here to redeem.](#)

[Terms of Service](#) | [Privacy Policy](#) | [Get Download Manager](#) | [Compatible Players](#) | [Web Services](#) | [Quick Tips](#)

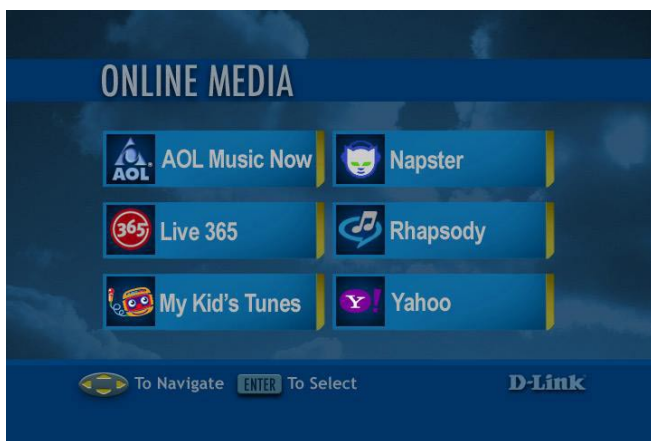
©2006 All Media Guide, LLC. Content provided by All Music Guide®, a trademark of All Media Guide, LLC.
©2006 AOL Music Now LLC. Music Now and other graphics, logos and icons of aol.musicnow.com are trademarks and trade dress of AOL Music Now LLC.

Online Media (continued)

Live365™

Live365™ is an Internet radio service that provides unlimited on-demand access to thousands of radio stations. The audio is streamed directly over the Internet. Live365™ allows you to select your own preset stations and provides custom station recommendations.

Select **Online Media** from the Home screen or click the ONLINE MEDIA button on your remote control. Press the down arrow on the remote control to select Live 365™ and press ENTER to select it.

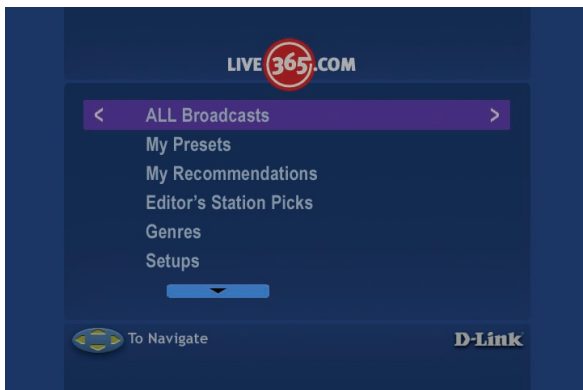


Use the **up** and **down arrows** on the remote control to navigate through the options. Press **ENTER** on the remote control to make a selection. Use the **down arrow** to navigate to the next field.

ALL Broadcasts: Displays all available internet radio stations.

My Presets: Displays your preset stations. Press the **MENU** button to delete the station from your preset list.

My Recommendations: Lists recommended stations based on your preset stations. Press the **MENU** button to add a station to your preset list.



Online Media (continued)

Live365™ (continued)

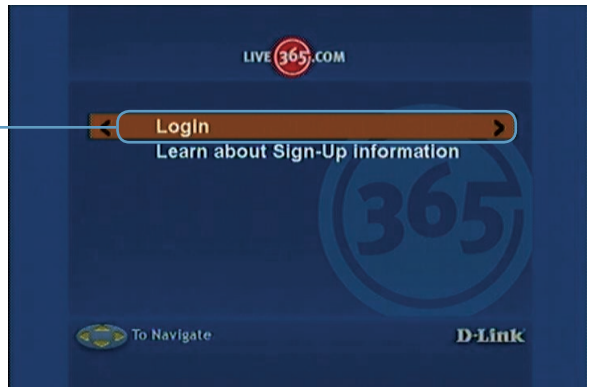
Editor's Station Picks: Lists recommended stations based on your preset stations. Press the **MENU** button to add a station to your preset list.

Genres: Lists stations according to genre. Press the **MENU** button to add a station to your preset list.

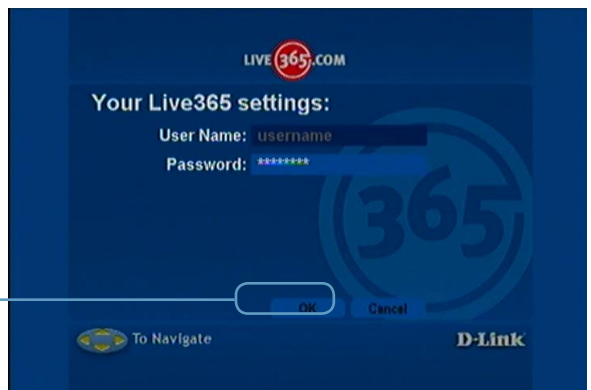
Setups: Click to access setup features such as **Login** and **Learn about Sign Up information**.

Search: Allows you to enter a song or artist to search for Live365 stations that play that music. Press the **MENU** button to add a station to your preset list.

Click **Login** to enter in your Login information. If you do not have a Live365 account, click **Learn about Sign Up information**.



Enter in your **User Name** and **Password**, and click **OK**.



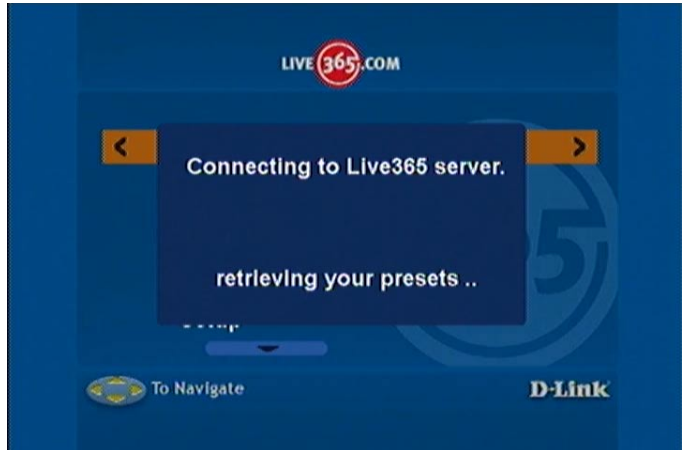
Online Media (continued)

Live365™ (continued)

After you login, your stations or presets will be retrieved. Scroll down to select a station or preset.



All the details regarding your listening selection will be displayed here.

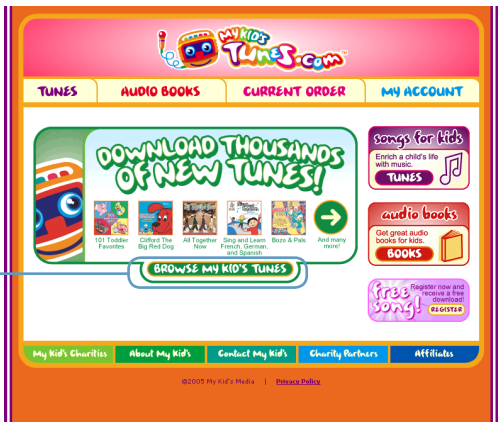


Online Media (continued)

My Kid's Tunes™



My Kid's Tunes™ offers children's music, stories, and audio files for download from their website www.MyKidsTunes.com. To collect music, stories and audio files from My Kid's Tunes™, you must order through their online service. Once you've ordered from My Kid's Tunes™ you may begin to listen to the downloaded content through your DSM-320.



Browse My Kid's Tunes™ and place an order through their website.

Online Media (continued)

Napster™

Napster™ is a legal music service that gives subscribers on-demand access to over 700,000 music tracks. Napster™ subscribers can listen to and collect full-length, high-quality tracks online and offline. Subscribers can also collect as many tracks as desired on the hard drives of up to 3 PC computers to listen offline and use with the DSM-320. These tracks can be enjoyed for the duration of your Napster™ subscription.

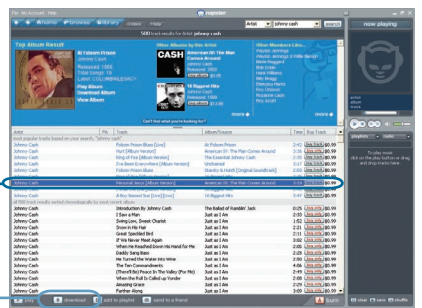
Files downloaded with Napster™ are in the Windows® Media DRM format. This is a type of copy protection. These files can be played on the DSM-320 if you use the Windows® Media Connect software. This software can only run on Windows® XP with Service Pack 2 or Windows® XP Media Center Edition. For details on configuring Windows® Media Connect, please refer to page 27 of the manual.

You can look up music by genres.

You can search by artist, track names, album names, and even search other member's collections.

Select a track that you want to download.

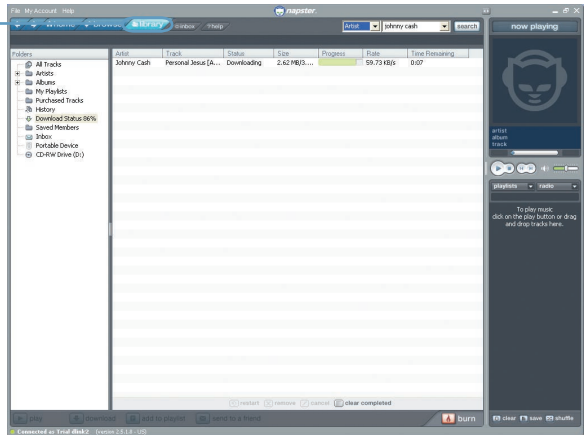
Click the download button to download the file to your computer.



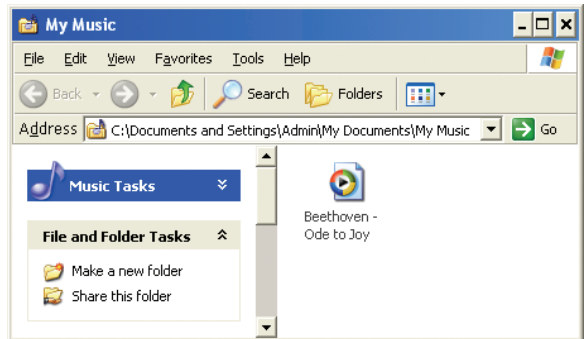
Online Media (continued)

Napster™ (continued)

The library window will display the download status.



By default, downloaded music is stored in the **My Music** folder on your hard drive.



Important! You need to use the Windows® Media Connect® software to play the protected files that you download from Napster™. Please see page 27 for details.

Be sure to select the Windows® Media Connect server as the default server in the DSM-320 System Setup if you want to access content downloaded from Napster™. To do so, press the **SETUP** button on the remote control. Navigate to System by using the **down arrow** and then press **ENTER**. Navigate to View All Servers using the down arrow and press **ENTER** to view a list of available servers.



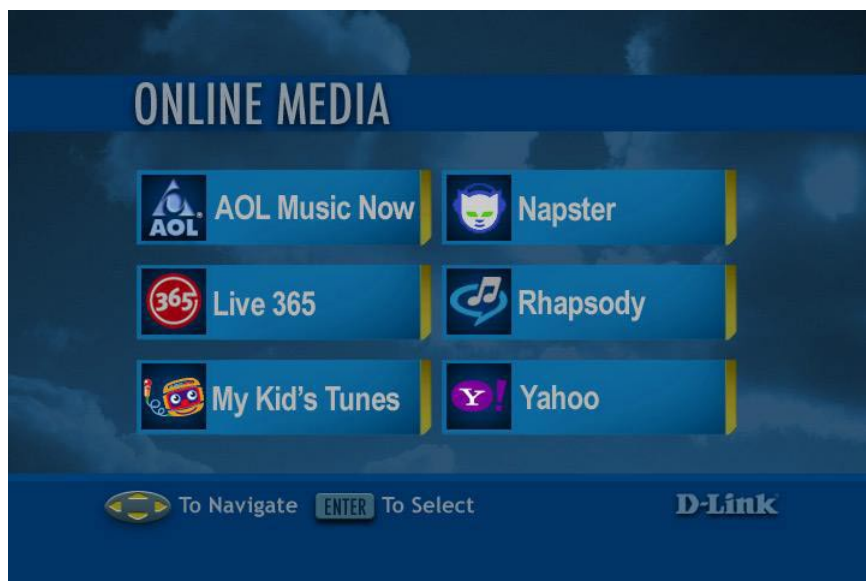
Online Media (continued)

Rhapsody™

Rhapsody™ is a subscription music service that provides unlimited on-demand access to over 725,000 music tracks. The CD quality audio is streamed directly over the Internet. Rhapsody™ also offers access to Internet radio stations and allows you to create your own custom stations.

Select **Online Media** from the Home screen or click the ONLINE MEDIA button on your remote control. Press the down arrow on the remote control to select Rhapsody™ and press ENTER to select it.

Note: You must have the Rhapsody™ software running on a computer before selecting Rhapsody™ from the menu.



Current Rhapsody™ Subscribers

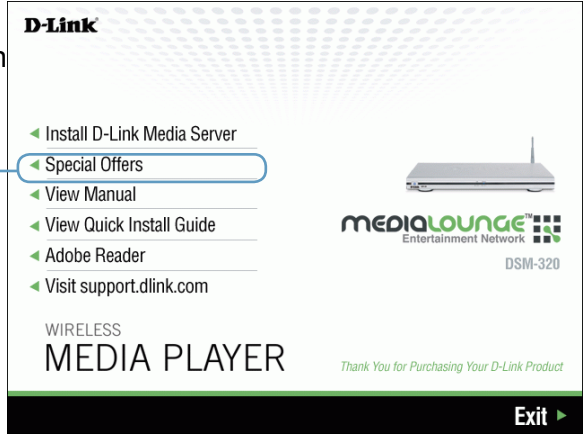
If you already have an account with Rhapsody™ and have the Rhapsody™ software installed on your computer, please skip to page 80 - Configuring Rhapsody™ for use with the DSM-320.

Online Media (continued) For New Rhapsody™ Users

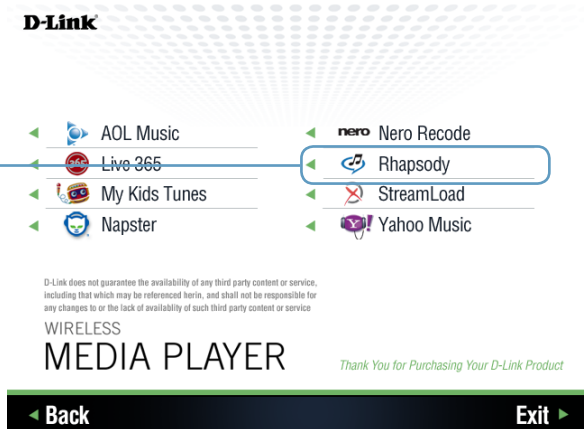
The D-Link DSM-320 CD-ROM contains a link to the latest version of the Rhapsody™ software.

Click **Special Offers**

Note: You can also get to the link by visiting our website at <http://support.dlink.com>



Click **Rhapsody**



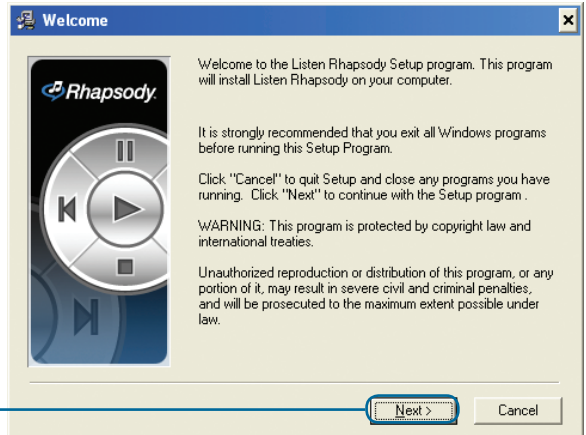
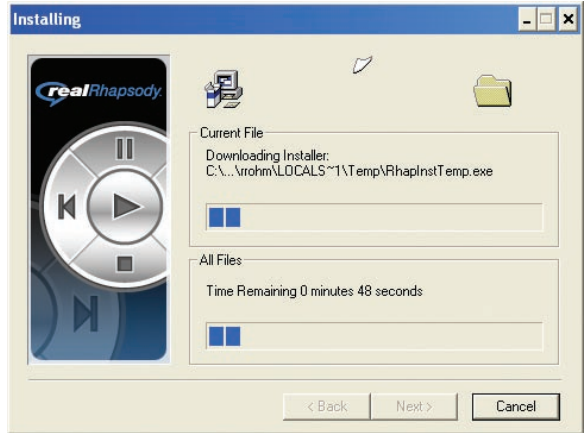
Click **Next**



Online Media (continued)

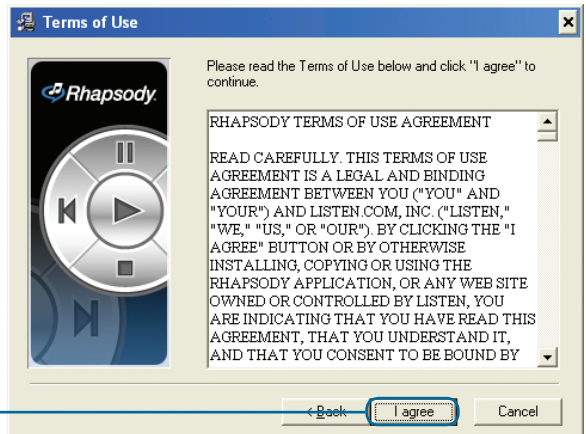
For New Rhapsody™ Users (continued)

The installation software will begin downloading to your computer.



Click **Next**

Please read the Terms of Use. If you do not agree to these terms, the installation process can not occur.



Click **I agree**

Online Media (continued)

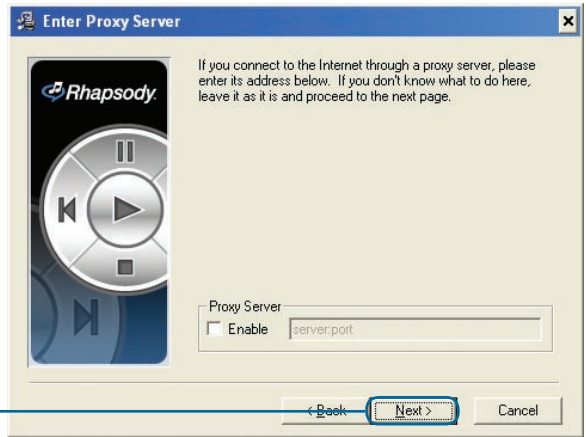
For New Rhapsody™ Users (continued)

Select a destination folder for the software installation or use the default location.



Click **Next**

If you are connecting through a proxy server you can enter the settings here. If you are unsure, leave it as is.



Click **Next**

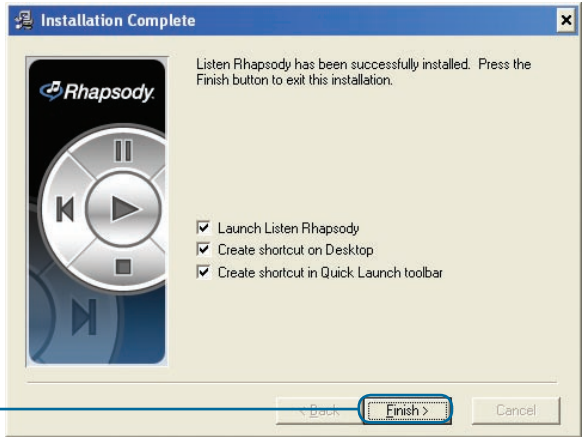


Click **Next**

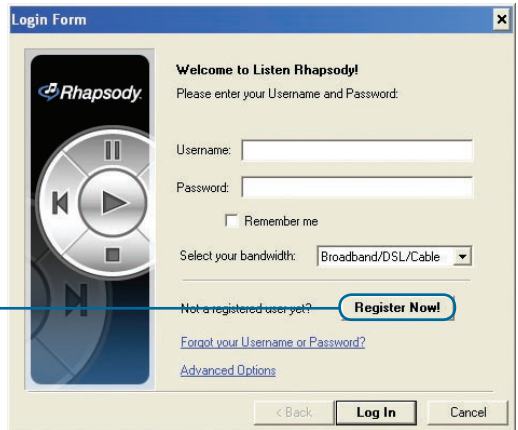
Online Media (continued)

For New Rhapsody™ Users (continued)

By default the options are configured to create shortcuts on your Desktop and on the Quick Launch toolbar.



Click **Finish**



Click **Register Now!**

Fill in the blank fields to begin the registration process.




Click **Next**

Online Media (continued)

For New Rhapsody™ Users (continued)

Complete the registration information on this page.



The Registration Form window contains the following fields and options:

- Country: [Dropdown menu]
- Zip: [Text input field]
- Gender: [Dropdown menu]
- Speed: [Broadband/DSL (Dropdown menu)]
- Parent's Email: [Text input field]
- Please choose the type of email you wish to receive: HTML Text
- Please send me product updates (recommended)
- Please sign me up for the newsletter
- Share more information with me. Occasionally, I would like to receive news updates and special offers from Listen Rhapsody partners.
- If you have concerns about privacy, please read our "Privacy Policy."
- [Privacy Policy](#)
- Navigation buttons: < Back, Next >, Cancel

Click Next



The Congratulations window contains the following text and elements:

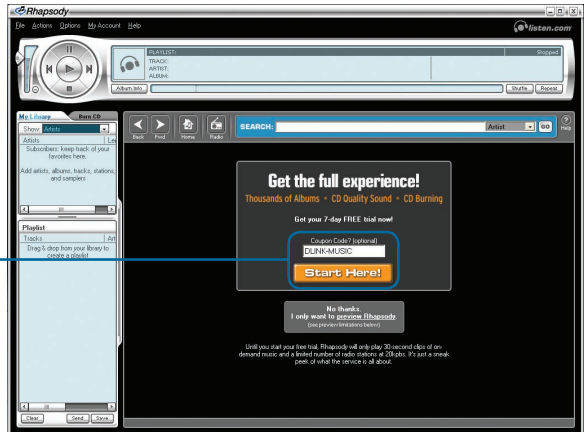
- Congratulations**
- You have successfully registered for Listen Rhapsody. Select 'Finish' below to begin enjoying Rhapsody.
- [Watch the flash tutorial for a detailed product tour](#)
- Navigation buttons: < Back, Finish, Cancel

Click Finish

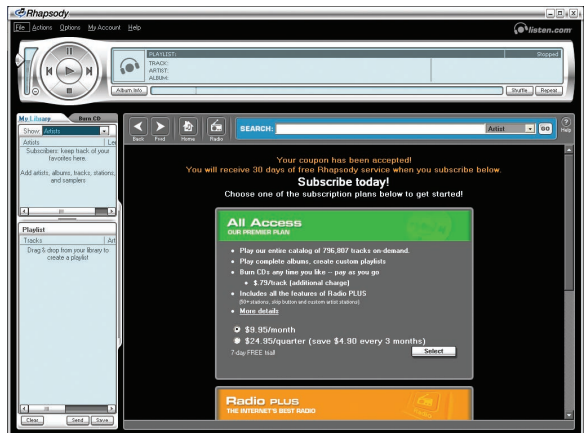
Online Media (continued)

For New Rhapsody™ Users (continued)

Enter **DLINK-MUSIC** as the coupon code and click the **Start Here** button.



Select the service plan that you would like to sign up for.



Now that you've installed the Rhapsody™ software and created an account, you need to configure the software for use with the DSM-320. Please follow the steps on the following page to configure the software.

Online Media (continued)

Configuring Rhapsody™ for use with the DSM-320

To use Rhapsody™ with your DSM-320 you need to enable the UPnP Server within the User Settings. To do this, launch the Rhapsody™ application and follow the steps below.

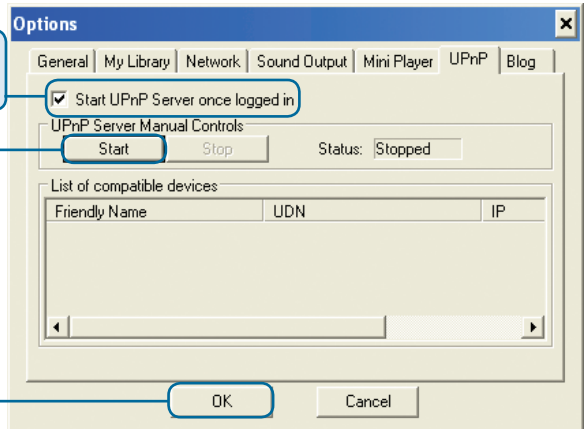
Go to **Options** and select **User Settings**



Place a checkmark next to **Start UPnP Server once logged in**

Click the **Start** button to activate the UPnP Server

Click **OK** to save your settings



Online Media (continued)

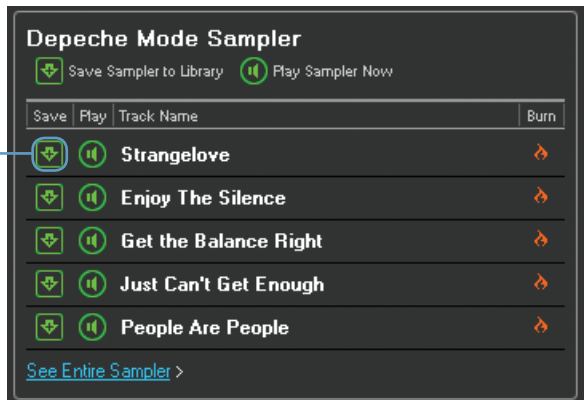
Configuring Rhapsody™ for use with the DSM-320 (continued)

Only songs (albums or individual tracks) and radio stations that have been added to your library are available for streaming to your DSM-320.

The library displays music and radio stations that have been added to your library. The library can be sorted by artist, tracks, albums, and radio stations. If you've created playlists, you can sort these as well. **Only items listed in the library are accessible through the DSM-320.**



To add a song to your library, click on the **down arrow** icon next to the selected track.



Once your library is configured, you can access the Rhapsody™ content on your DSM-320 just as you would with media stored on your computer.

Online Media (continued)

Yahoo! Music

Yahoo! Music provides unlimited access to over 2 million songs. Keep all the music you want, as long as you're a subscriber.

Visit <http://music.yahoo.com/> for more info.

Files downloaded with Yahoo! Music use Windows® Media DRM. This is a type of copy protection. These files can be played on the DSM-320 if you use a UPnP™ AV media server software (such as Yahoo! Music Jukebox).

The screenshot shows the Yahoo! Music website interface. At the top, there's a navigation bar with links for 'Yahoo! My Yahoo! Mail' and 'Make Y! your home page'. The main header features the 'MUSIC' logo, a search bar, and navigation tabs for 'LAUNCHcast RADIO', 'MUSIC VIDEOS', 'DOWNLOADS', and 'ARTISTS'. A secondary search bar is located below the header, with a search button and a 'Try It Free' link. The main content area is divided into several sections:

- ADVERTISEMENT:** A large banner for 'ALL YOUR FAVORITE ARTISTS. ALWAYS A GREAT SEAT.' with options for 'EXCLUSIVE LIVE VIDEOS', 'AUDIO DOWNLOADS', and 'BACKSTAGE PHOTOS'. It also promotes 'LIVE SETS ON MUSIC'.
- YAHOO! MUSIC UNLIMITED:** A section highlighting 'Instantly get over 2 million songs' and listing benefits: 'PLAY and save to library', 'SHARE music with friends', and 'ACCESS music from anywhere'. A 'TRY IT FREE' button is present.
- RADIO:** A section titled 'Create Station' with a dropdown menu for 'Select a station below' showing options like 'Adult Alternative', 'Hip-Hop', and 'Rock Holiday'. A 'Browse all radio stations >' link is at the bottom.
- PEPSI SMASH ON! MUSIC:** A section for 'Watch Webisode 3 Of TRACK, JoJo's Online Reality Series' featuring a video thumbnail and the text 'It's Pure Fandomonium JoJo's instore causes chaos!'. A 'More Artist Spotlights...' dropdown is below.
- MUSIC VIDEOS:** A section for 'See Chingy Fans Shake It In "Dem Jeans"' with a video thumbnail and the text 'Chingy: Get Your Freak On Watch his new Fans-only video now!'. A 'Browse All Videos >' link is at the bottom.
- FEATURE:** A section for 'Tenacious D: Pick Of Destiny Special' with a video thumbnail and text: 'The saga of the Greatest Band of All Time has never been told in its entirety...until now! Today, the Tenacious D movie is finally being unveiled. Celebrate with these D-licious, D-lightful videos.'
- MUSIC NEWS:** A section with three news items:
 - 'Review: Darryl Worley's "Here and Now" Nov 22 2006 12:23PM'
 - 'Pitbull making his territory in hip-hop Nov 22 2006 12:17PM'
 - 'Franklin duets with Blige on "Bobby" CD Nov 22 2006 12:11PM'
- TODAY'S FEATURES:** A section for 'NISSAN LIVE SETS' featuring 'Christina Aguilera' with text: 'See Xbina up-close & personal in this private concert for her fans.' and a 'more... >' link. Below it is a 'who's next?' section for 'BULLET FOR MY VALENTINE' with the text: 'You voted...we listened! Now see the latest winners, BULLET FOR MY VALENTINE, perform just for'.
- TOP 10 VIDEOS:** A list of top videos:
 - 1 Smack That Akon
 - 2 Promise Clara
 - 3 Too Little, Too Late JoJo
 - 4 Ferocious

Setup

If you want to change the configuration of your setup you can press the **SETUP** button on the remote control.

For an explanation of the terminology used in the Setup functions, please see the Glossary.

Press **SETUP** on your remote control to access the setup features. Using the **up arrow** and **down arrow** buttons on your remote control, scroll down the list to highlight your selection then press **ENTER** or the **right arrow** to select your choice.



Navigating the menus

Use the **up** and **down arrow** buttons on the remote control to navigate between the options. Press **ENTER** on the remote to select the highlighted item. Use the **up** and **down arrows** to toggle through the settings. Press **ENTER** to make a selection. After making all of your selections, you must navigate to the OK button and press **ENTER** to save the settings. To toggle between OK and CANCEL, use the **left** and **right arrow** buttons.

*Press **ENTER** in a text field, to display the onscreen keyboard. You can enter text either by using the onscreen keyboard, or by using the digits and letters on your remote control.*

Network

Connection: Select **Wired** or **Wireless**. Use the **up arrow** or **down arrow** to toggle between selections. Press **ENTER** to select the option. Press the **down arrow** to proceed to the next option.



Setup (continued)

Configuration: Select **Static** or **DHCP** by pressing the **up arrow** or **down arrow**. When the desired option is highlighted, press **ENTER** on the remote. If Static is selected, you will need to input the IP, Netmask, Gateway, and DNS.

*A DHCP-enabled router automatically assigns IP addresses to devices on your network. If you have a DHCP-enabled router, select **DHCP**.*

*If you do not have a DHCP-enabled router, you will select **Static** and provide the following information:*

Entering address information:

Press **ENTER** on the remote control to select a highlighted field. Enter the address information by using the number keys (**0-9**) on the remote control. Use the dot button (“.”) on the remote control as you would when entering an address on a computer. The **CLEAR** button will erase the entire field. Use the **left arrow** to erase one character.

IP: Enter the IP address of the DSM-320.

Netmask: Enter the subnet mask of the DSM-320.

Gateway: Enter the IP address of the router on your network.

DNS: Enter the IP address of the domain name server.

Wireless

SSID: Enter the SSID (Service Set Identifier, or the name of the wireless network) by pressing **ENTER** on the remote control when the field is highlighted. The on-screen keyboard will appear and you can manually enter an SSID.

Site Survey: When highlighted, press **ENTER** on the remote control. A list of available SSID’s will appear. Navigate the list using the **up** and **down arrows**.

Mode: Ad-Hoc Mode is used for peer to peer wireless networks that do not contain a router or an access point. Infrastructure Mode is used for networks with an access point or router. To toggle between the two, press the **ENTER** button when Mode is highlighted. The **up arrow** and **down arrow** will toggle between the two options. Press **ENTER** again to select.



Setup (continued)

WEP (Wired Equivalent Privacy): An industry standard encryption technology used by wireless devices. When using WEP, you must determine the level of encryption. The type of encryption determines the key length. 128-bit encryption requires a longer key than 64-bit encryption. Keys are defined by entering in a string in HEX (hexadecimal - using characters 0-9, A-F) or ASCII (American Standard Code for Information Interchange – alphanumeric characters) format. ASCII format is provided so you can enter a string that is easier to remember. The ASCII string is converted to HEX for use over the network. Four keys can be defined so that you can change keys easily. A default key is selected for use on the network.

There are five options configurable under this setting, Disable, 64-bit Hex, 128-bit Hex, 64-bit ASCII, and 128-bit ASCII. To toggle between the options, press the **ENTER** button when WEP is highlighted. The **up arrow** and **down arrow** will toggle between the three options. Press **ENTER** again to select.

Key Index: Select a number between 1 and 4. To toggle between the options, press the **ENTER** button when Key Index is highlighted. The **up arrow** and **down arrow** will toggle between the four. Press **ENTER** again to select.

Key: To connect to an encrypted wireless device, the key you enter here must match the key of the device exactly. Press the **ENTER** button on the remote control with this field highlighted to enter a key. The on-screen keyboard will be displayed and you can enter the key.

Key Types and Examples:

64-bit Hex: Keys are exactly 10 characters in length.

Example: 12345678FA is a valid string of 10 characters for 64-bit encryption.

128-bit Hex: Keys are exactly 26 characters in length.

Example: 456FBCDF123400122225271730 is a valid string of 26 characters for 128-bit encryption.

64-bit ASCII: Keys are exactly 5 characters in length.

Example: DMODE is a valid string of 5 characters for 64-bit encryption.

128-bit ASCII: Keys are exactly 13 characters in length.

Example: 2005PIECAKES1 is a valid string of 13 characters for 128-bit encryption.

Setup (continued)

System

Device Name: You can change the name of your DSM-320 here. To do so, press **ENTER** on the remote control with the Device Name field highlighted. The on-screen keyboard will appear.

Default Server: The default server is listed here. This field is not editable. To change the default server, you must select a server by going to View All Servers. If you are using multiple servers, such as Windows® Media Connect and the D-Link® Media Server software, then you must toggle between servers by selecting the server from the View All Servers option.

View All Servers: Navigate to this button by using the **down arrow** on the remote control. Press **ENTER** on the remote control to view a list of all the devices that are available to share media on your network.

System Restart: Navigate to this button by using the **down arrow** on your remote control. Press **ENTER** on the remote control to restart the DSM-320.

System Reset: You will lose all current settings when selecting this option. The factory defaults will be restored and any settings you have entered will be erased. To navigate to this option, use the **down arrow** on your remote control. Press **ENTER** to perform a system reset.

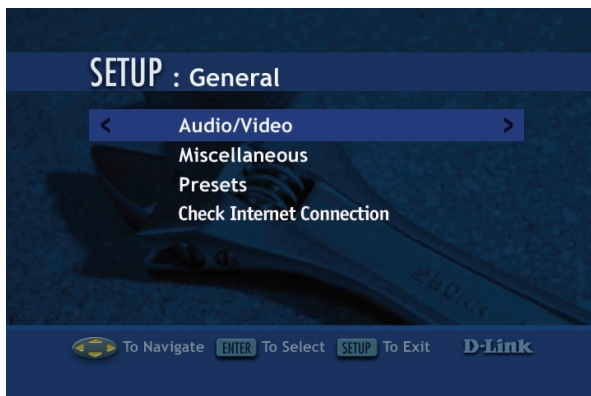
Wizard: When you select the Wizard option in the System Setup window, you will launch the Setup Wizard. This is the same Setup Wizard that is run during the initial startup of your device.



Setup (continued)

General

The General option contains a submenu of four options:



Audio/Video

Aspect ratio: The aspect ratio can be adjusted to match the capture settings of your video clips.

Display mode: Interlace is the default setting. Progressive scan should only be selected if your television or monitor supports this feature.

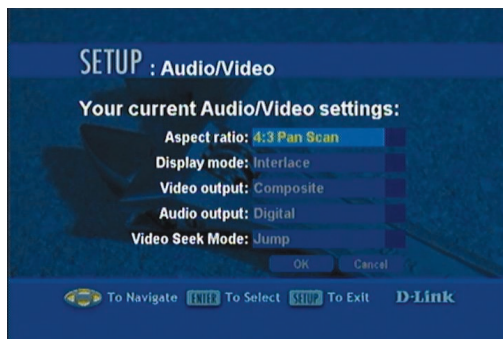
Video Output: You can select the video output from this screen or by pressing the **VIDEO OUT** button on the remote control from any screen.

The Composite setting should be selected for composite or S-Video connections. If component connectors are used but not selected, the screen will have a blue tint.

Audio Output: The audio output can be modified from this screen or by pressing the **AUDIO OUT** button on the remote control from any screen.

If you are playing audio that has been encoded in 5.1 surround then sound is in pass-through mode. This means that you cannot adjust the volume on the remote control or Mute the sound using the remote control. With 5.1 surround audio you must control the volume level from your digital tuner/receiver.

Video Seek Mode: You can select either **FF/Rev** or **Jump**. **FF/Rev** is the standard way of Fast Forwarding or Reversing through an audio/video file. Selecting **Jump** will allow you to jump through an audio/video file based on an increment of time you provide.



Setup (continued)

Miscellaneous

Screen Saver Delay: Select the amount of idle time before the screen saver appears. Choose a time between 1-30 minutes. Use the **up** and **down arrows** on your remote control to navigate through the list. Press the **ENTER** button on your remote control to make a selection.

Photo Display: Choose to have photos displayed as a list or as thumbnails. Thumbnails are small previews of the image but may take longer to appear.

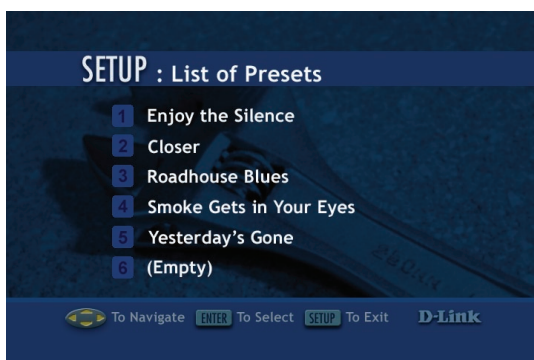
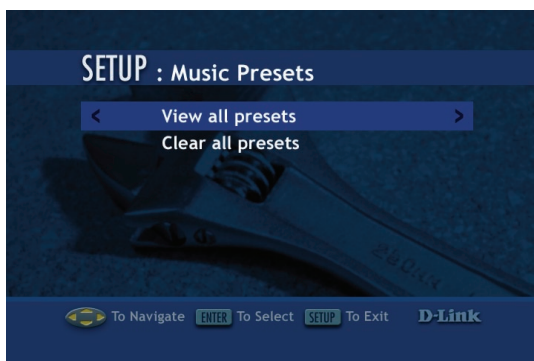
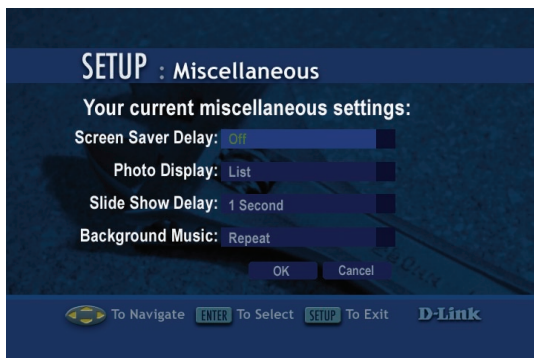
Slide Show Delay: The interval selected here is the amount of time that each image will be shown on the screen before changing to the next image. The lowest setting is 1 second. The maximum amount of time between images is 2 minutes.

Music Presets

View all presets: This option will display the track titles of songs that have been defined as presets.

Clear all presets: This option will erase all of the presets.

The List of Presets page displays all presets that have been defined. You cannot modify the presets from this page. Presets 1-6 are displayed on the first page. Use the **up** and **down arrow** keys to toggle between the pages. To define presets, please see Creating A Preset on page 46.



Setup (continued)

Check Internet Connection

Check Internet Connection:

Select this option to check the validity of your Internet connection.



Press **OK** to proceed with the test.



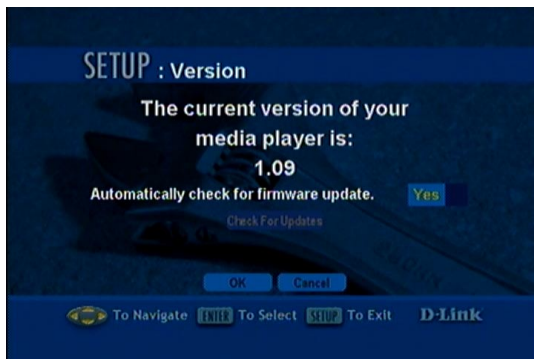
The phrase **Connection test succeeded!** will appear at the bottom of the window when your Internet connection is valid.



Setup (continued)

Version

Automatically check for firmware update: Firmware updates are system software updates that correct known issues and add new features to your DSM-320. If Yes is selected, your DSM-320 will check the Internet periodically to locate available firmware updates. If a firmware update is located, you will be prompted to update.



Check for Updates: Press **ENTER** on the remote control when this option is highlighted to check for firmware updates immediately. If a firmware update is located, you will be prompted to update. **IMPORTANT: DO NOT TURN OFF THE UNIT OR DISCONNECT THE POWER DURING THE FIRMWARE UPDATE.** Once the update has been completed the DSM-320 will restart.

Some firmware updates may display an informational message telling you to upgrade your version of the D-Link Media Server software. Your current version of the software should still work, but to utilize all of the latest firmware features you should upgrade your Media Server software.

Please visit <http://support.dlink.com> for the latest version of the Media Server software.

Note: *If you have a version of the D-Link Media Server already installed on your system, please uninstall the software and restart your system before installing a newer version of the D-Link Media Server software.*

Frequently Asked Questions

What kind of files are supported by the DSM-320?

- Audio - MP3, WMA, WAV, AIFF, OGG
- Video - MPEG 1, 2, and 4, AVI, XVID
- Images - JPEG, PNG, BMP, GIF, TIFF, JPEG2000

What do I need to set up the D-Link's DSM-320?

- You must have a Microsoft Windows-based home network in place, with at least one PC running Microsoft Windows® XP/2000/Me/98SE.

Will any software need to be installed on my computer?

- Yes, the D-Link Media Server Software, Windows® Media Connect, or any UPnP AV compliant media server software needs to be installed on a networked Windows-based PC. From this PC, you can choose the media files to be streamed to your TV. To access Rhapsody™ content, you will need the Rhapsody™ software installed on your computer.

What operating system do I need to run the server software?

- Windows® XP/2000/Me/98SE

How does the D-Link DSM-320 get its files from my computer?

- As soon as you have installed the D-Link® Media Server software on your PC, the server software will be launched, allowing you to add media files. You may then select folders than contain music, photos, and videos that you want to play.

Can I access Rhapsody™ and Live 365 without the Media Server software running?

- Yes, by pressing the **ONLINE MEDIA** button on the remote control from the Home screen. **Note:** *You do however need the Rhapsody software running on your computer.*

Frequently Asked Questions (continued)

If I am running Windows® Media Connect, do I need to run the D-Link® Media Server software?

- No, you may run both applications but it is not necessary to run both at the same time.

What about Copy Protection and DRM support?

- The most common method of copy protection is WMA DRM (Digital Rights Management). The DSM-320 can play these types of files if you are using the Windows® Media Connect software. For instructions on configuring Windows® Media Connect, please see page 27.

Can I use my Universal remote control?

- No, the DSM-320 is not compatible with a universal remote but you can use a remote with learning ability.

Can I connect the DSM-320 directly to a PC without using a router or a hub?

- Yes, please make note of the following:

Wireless Users: Set the Mode to Ad-Hoc in the wireless settings.

Wired Users: Connect an Ethernet cable directly from the DSM-320's Ethernet port to the Ethernet port on your PC. The DSM-320's Ethernet port is Auto MDI/MDI-X, so a special Ethernet cable is not required.

All Users: If DHCP software isn't running on your computer, you will need to assign a static IP address to the DSM-320.

Note: *Online Media and firmware upgrades are not available without an Internet connection.*

How do I change the bit rate of an audio file?

- There are various conversion programs available for download on the Internet.

Troubleshooting

I cannot see the Setup Wizard when I turn on my DSM-320 player for the first time.

- Make sure your TV is displaying the appropriate video source. You may need to use the **AV Input**, **Source**, **Select**, or **TV/Video** button on your TV or TV remote to change video sources. If you are having trouble changing the video source, refer to the instructions that came with your TV.
- If you did not connect the player directly to your TV, but are instead passing the signal through your VCR, make sure your VCR is displaying the appropriate video source. You may need to use the **Input** or **Source** button on your VCR or VCR's remote control. Some VCRs only pass the signal through when they are turned off. If you are having trouble displaying the correct video source, refer to the instructions that came with your VCR.
- Make sure cables are connected to the IN jacks on your TV or VCR, not the OUT jacks.
- The cables you are using to connect your receiver to your TV or other equipment may be damaged or defective. Try exchanging the cables connected to the receiver with other cables that you know are working properly.
- Make sure you have firmly attached the power adapter plug to the back of the player. Also, verify the power adapter is plugged into a working power outlet and that the outlet is not controlled by a light switch.

I've updated the firmware on my DSM-320 but all of the features do not work.

- Be sure you've updated to the latest version of the D-Link Media Server software as well.

You can download the latest version at <http://support.dlink.com>

Troubleshooting (continued)

I can't access the D-Link Media Server from MediaLounge™.

- Check the computer and make sure that it is on and not in “sleep” mode.
- Make sure that the path you established to access your media content is correct (the shared folders you assigned in the Media Server software).
- Make sure that you are connected to your home network. If you have an internet connection on your network, check the connection by attempting to browse the internet. Also, check if the IP Address has been assigned to the Media Player.
- Check if the Media Server software is running on your computer by checking the icon in the system tray.
- Disable your network security/firewall, this may prevent the Media Server software from operating properly.
- If your computer is running Windows® 2000 or Windows® XP, make sure you have signed in.

MediaLounge™ responds slowly when I watch a movie, browse photos, or listen to music.

- Check to see if there are too many files in one particular folder, sometimes navigating through too many files may be slow. Create more folders with less content.
- Remove non-supported file formats. The response time becomes slow when attempting to play unusable files.
- Check if your computer is performing at optimal speed. Try installing the software on a faster computer.

Troubleshooting (continued)

My remote control isn't working.

- Make sure the batteries are inserted correctly.
- Try removing the batteries and reinserting them without touching any buttons on the remote control.
- Replace the batteries with new ones.

The volume and mute buttons on the remote control don't work when playing content that was encoded in 5.1 surround.

- The volume can only be adjusted on your digital stereo receiver.

I can't find any of my music, photos, or video.

- Make sure your computer is powered on and that it has not entered standby mode. You may need to change your computer's power settings if you want your content to be available all the time.
- Make sure the Media Server software is running on your computer. Look for the Media Server icon in your system tray. If necessary, start the Media Server software again.
- Click on the Media Server icon and select Show Media Server to verify you are sharing the correct directories.
- If using a wired network, verify the Ethernet cable is properly attached to your DSM-320 and to a network switch, hub or router. Verify that the switch, hub or router is powered on.
- If you are using static IP addresses, verify the IP address and netmask are in the same range as other addresses on your network. Verify that the address is not already in use by another PC or device.
- Make sure the files you are sharing use a supported file format and encoding scheme.

Troubleshooting (continued)

I can't hear any sound when I'm playing music.

- Make sure the audio cables are properly connected.
- If the audio cables are connected to your TV, the TV must be on to hear any music.
- If the audio cables are connected to your stereo, make sure the stereo is on and you have the correct stereo input source selected. If you are having trouble selecting the correct audio source, refer to the instructions that came with your stereo.

Some of my MP3 and WMA files don't appear.

- The DSM-320 supports the most common music file formats. However, there are almost an infinite variety of bit rates and sample rates. If a file does not appear on the receiver, it most likely uses an unsupported rate.
- The files may be copy protected. To share your files, turn copy protection off when you rip them (**Note:** *WMA DRM files can be played by using Windows® Media Connect Server software, see page 27 for details*).
- The following MP3 sample rates are supported:
4, 8, 16, 22.05, 24, 32, 44.1, 48, 88.2 and 96 kHz.
- For best results, rip your MP3 files at 128kbps or higher, with a sample rate of 44.1 kHz.

I am not able to play certain media files.

- The DSM-320 supports most industry standard file formats but even supported file formats can be encoded in ways that are not supported. Try exporting media with different encoding settings or using different software applications to encode your files.

Troubleshooting (continued)

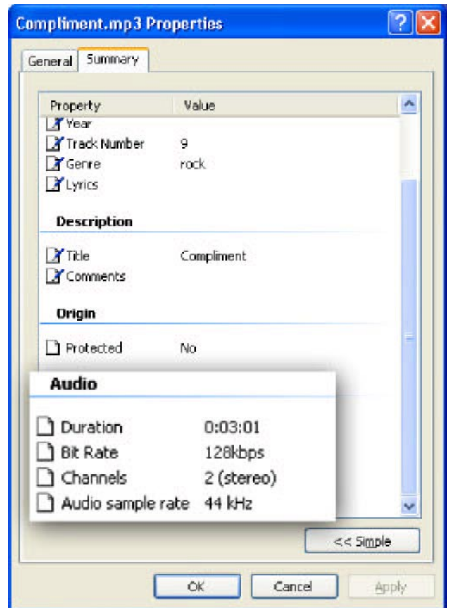
Checking the bit and sample rates of a music file.

- To check the bit and sample rates of a music file:

1. Right-click on the file and select **Properties**.
2. Select the **Summary** tab and click the **Advanced** button. Scroll to the bottom of the list.

The file to the right has a bit rate of 128kbps and a sample rate of 44 kHz.

In most cases, the sample rate does not matter unless you come across a file that will not play or appear on your player. Use the above procedure to check the file settings for supported rates.



I created a playlist on my computer, but it doesn't appear on my media player.

- Make sure the playlist file is located in a folder shared by your media player. Copy the playlist to your shared music folder or click on the Media Server icon to add or change your folder options.

How do I reset my DSM-320?

- Under normal circumstances, you should not need to reset your media player. However, to fully reset the media player, lightly insert a paper clip into the reset opening on the unit's rear panel for ten seconds.

What version of firmware do I have?

- From the main home screen, press the **SETUP** button and select **Version**. The firmware version will be listed.

Troubleshooting (continued)

I am unable to access Rhapsody™ content.

- Make sure Rhapsody™ is running on a computer connected to the network and check your network connections.
- Verify that the UPnP Server has been started in Rhapsody™. Within the Rhapsody™ application on your computer, go to **Options**, select **User Settings**, and go to the **UPnP** tab. If the Status is stopped, click on the **Start** button. Be sure to check **Start UPnP server once logged in**.
- Make sure you are able to play audio from within the Rhapsody™ application on the computer. If you are unable to play Rhapsody™ content from the computer, check your network and Internet connection. If your Internet connection is ok but you are still unable to play Rhapsody™ content, please contact Rhapsody™ support. To contact Rhapsody™ support, go to <http://www.listen.com/dlink> and click on Contact Us at the bottom of the page.

I am unable to access Napster™ content.

- Make sure you have Windows® Media Connect running and that you are sharing the folder that contains the Napster™ audio files.
- Make sure you have validated the D-Link® player from within Windows® Media Connect.

I was able to browse and play content from my media player, but now I can no longer browse or play any content from my media server.

- This is a problem we have noticed with Norton Anti-Virus 2005. Your media player caches the available media server for 30 minutes. During this time, if the connection between your PC media server and the media player was disconnected, you will need to restart your PC to solve this issue.

Troubleshooting (continued)

When sharing files with the D-Link Media Server, my PC is very slow.

- If you are sharing gigabytes of content, especially videos, please make sure that you are not running any other software that requires high CPU usage.

It takes a long time to share files with the D-Link Media Server.

- If you are sharing gigabytes of content with your media server software, it may take several minutes depending on the size of the content you are sharing.

The DSM-320 will not play my video files.

- If you're playing .VOB video files, make sure that your video files are smaller than 2GB. .VOB video files have a limitation of 2GB.

Technical Specifications

Network

- TCP/IP (DHCP or Static IP Address)
- 802.11g Wireless (Supports up to 54Mbps transfer rate)
- 802.11b Wireless (Supports up to 11Mbps transfer rate)
- Wired LAN: 10/100Mbps

Media Streaming Protocol

- HTTP

Supported Audio Formats:

- MP3 (up to 320kbps)
- WAV & AIFF (AIFF files must be encoded in PCM format only.)
- WMA (Does not support WMA lossless, WMA Pro)
- MPEG 1 and MPEG 2 - Audio using the file extension .mp3
- OGG Vorbis - Audio using the .ogg extension

Supported Image Formats:

- JPEG (Grayscale, RGB, YCbCy) (*Does not support CMYK, YCCK*)
- BMP (Non-compressed)
- PNG (Non-alpha channel only)
- TIFF (RGB) (*Does not support CMYK, YMC, YMCK, KCMY*)
- JPEG2000
- GIF (*Does not support animated GIF's*)

Supported Video Formats:

- MPEG 1 (up to 8Mbps)
- MPEG 2 (up to 8Mbps)
- MPEG 4 (ASP - Advanced Simple Profile)
- XVID (with MP3 and PCM)
- AVI (MPEG4 layer only, does not support uncompressed AVI)

Audio Playlist Formats:

- M3U
- PLS

Outputs:

- RCA audio jacks
- RCA video
- S-Video
- Component Video
- Optical Digital Audio
- Coax Digital Audio

Technical Specifications (continued)

Antenna:

- Type: 2.4GHz swivel-type monopole antenna
- Frequency: 2.4G to 2.5GHz
- Impedance: 50 ohms
- Gain: 2dBi

Dimensions

- H x W x L: 1.5" x 11.25" x 16.75"
- Weight: 5.5 pounds

Security:

- Hardware based WEP (Wired Equivalent Privacy)
- Up to 128-bit encryption

Configuration:

- UPnP-AV 1.0 Enabled
- INMPR Compliant

PC System Requirements

- Connection to 802.11g wireless or Ethernet network
- Windows® 98SE, Me, 2000, or XP
- 500MHz processor
- 128MB memory
- 20MB available hard disk space
- CD-ROM drive
- Broadband Internet Service (*For online media access and firmware updates*)

Power Source:

- 100~120VAC 50/60Hz, 0.5A Max.

Power Consumption:

- 10W

Environmental specification

- Operating temperature: 0°C to 45°C
- Storage temperature:-25°C to 55°C
- Operating relative humidity: 10% to 95% non-condensing

Warranty:

- 1 Year

Appendix

Setting Microsoft Windows® Power Options

If you want access to your music and photos all the time, make sure to configure your PC's power settings. Do not allow your computer to enter a standby power state, or you will have to "wake up" your PC to view music or photos on your DSM-320. However, your monitor can be in a low power state or turned off.

To change your power settings on Windows® XP:

1. Click on **Start**.
2. Select **Control Panel**.
3. Select **Performance and Maintenance**.
4. Select **Power Options**.
5. Change both **System standby** and **System hibernates** to **Never**.
6. Click **OK**.

To change your power settings on Windows® 2000/Me/98SE:

1. Click on **Start**.
2. Select **Settings**.
3. Select **Control Panel**.
4. Select **Power Options**.
5. Change both **System standby** and **System hibernates** to **Never**.
6. Click **OK**.

Appendix (continued)

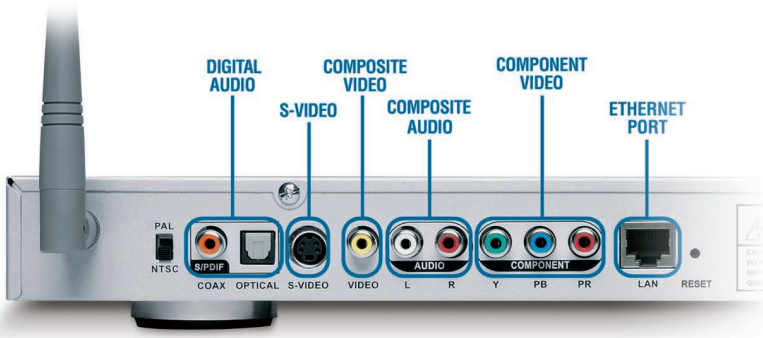
Wireless Installation Considerations

The D-Link® DSM-320 can be integrated into a wireless network from virtually anywhere within its operating range. However, the range can be limited by the number of walls, thickness of walls, and location of the walls that the wireless signal must pass through. Typical ranges vary depending on the types of materials and background RF (radio frequency) noise in your home or business. The key to maximizing wireless range is to follow these basic guidelines:

- Keep the number of walls and ceilings between the DSM-320 and other network devices to a minimum. Each wall or ceiling can reduce your DSM-320's range from 3-90 feet (1-30 meters).
- Be aware of the direct line between network devices. A wall that is 1.5 feet thick (.5 meters), at a 45-degree angle appears to be almost 3 feet (1 meter) thick. At a 2-degree angle it looks over 42 feet (14 meters) thick! Position devices so that the signal will travel straight through a wall or ceiling (instead of at an angle) for better reception.
- Building materials can impede the wireless signal. A solid metal door or aluminum studs may have a negative effect on the range. Try to position wireless devices and computers with wireless adapters so that the signal passes through drywall or open doorways and not other materials.
- Keep your product away (at least 3-6 feet or 1-2 meters) from electrical devices or appliances that generate RF noise.

Appendix (continued)

Audio and Video Cables Guide



Good

Composite Audio

Most common audio cable. Offers good quality audio. (also known as RCA Audio)



Composite Video

Most common video cable. Sends all video information through a single wire. (also known as RCA Video)



Better

Optical Digital Audio

Sends audio signals through a beam of light, leaving no room for interference.



S-Video

By splitting video signal into two: one for brightness (luminance) and one for color (chrominance), it delivers a marked improvement over Composite cables.



Best

Coaxial Digital Audio

Sends audio signals digitally and can handle a wider range of information for clean, crisp audio.



Component Video













By splitting video signal into three: one for brightness (luminance) and two for color (chrominance), they deliver a great picture with minimum interference.



Appendix (continued)

Television Aspect Ratio Chart

Video files will be in one of the three aspect ratios: 4:3 Pan/Scan, 4:3 Letter Box, or 16:9 Widescreen. The aspect ratio setting of the DSM-520 must match the file that is to be played for the type of TV you have.

| Video \ TV | | TV | |
|------------|--|--|---|
| | | 16:9 | 4:3 |
| 16:9 | Output | 16:9 | 4:3 |
| | 16:9 |  |  |
| | 4:3PS |  |  |
| 4:3LB |  |  | |
| 4:3 | Output | 16:9 | 4:3 |
| | 16:9 |  |  |
| | 4:3PS |  |  |
| 4:3LB |  |  | |

If you set your **Output** settings to 16:9, and your **TV** is a standard 4:3, playing a **Video** file encoded for 16:9 televisions will result in a squished image.

How to read this chart:

This chart contains three main categories: **Video**, **Output** and **TV**.

Video: This pertains to the video file's encoded format. Some video files are encoded with 16:9 aspect ratio, while others are encoded with the standard 4:3 aspect ratio.

Output: This is based on your video setting. At the **Setup** menu select **General**, and then **Audio/Video**. The **Aspect Ratio** field has three options to choose from: 4:3, 4:3 Letterbox, and 16:9.

TV: This is based on the type of television being used (Standard 4:3 TV or Widescreen 16:9 TV).

Glossary

Networking

802.11b: A wireless networking standard that supports data encryption and up to 11Mbps bandwidth.

802.11g: A wireless networking standard that supports data encryption and up to 54Mbps bandwidth.

Ad-Hoc: This wireless networking mode means that two PC's are communicating in a Peer-to-Peer network, without a router or an access point.

Bandwidth: A measure of the rate at which data can be sent and received through the network. This value is usually given in bits per second (bps) or Megabits per second (Mbps).

DHCP (Dynamic Host Configuration Protocol): A protocol that network devices use to obtain an IP address, subnet mask, gateway, and DNS addresses automatically. A DHCP server can be a router, ISP server, or PC running Internet Connection Sharing software. If you are using a DHCP-capable device in your network, you will not need to assign a static IP address to your DSM-320. However, if you do not have a DHCP-capable device in your network, you will need to assign a static IP address to your DSM-320.

DNS (Domain Name System): A system used to translate computer names into IP addresses. For example, a DNS server would translate www.dlink.com into 64.7.210.132

Ethernet: The most commonly used wired network technology. Standard Ethernet supports up to 10Mbps. Fast Ethernet supports up to 100Mbps.

Gateway: This is the IP address of the device that connects you to another network such as a router. A router would be the gateway between your local area network and the Internet.

Infrastructure: This wireless networking mode is used by wireless networks with a router or an access point.

Glossary (continued)

IP Address (Internet Protocol Address): An IP address consists of four groups of digits separated by periods. Each group of digits contain an 8-bit value as a number ranging from 0 to 255. Each computer must have it's own unique IP address. The IP addresses on your network must be within the same range. For example, if one PC or device has an IP address of 192.168.0.2, the other devices should have IP addresses that are sequential, like 192.168.0.3 and 192.168.0.4.

ISP (Internet Service Provider): A commercial organization that provides subscribers with access to the Internet.

Key: Encryption keys allow you to easily change wireless encryption settings to maintain a secure network. The DSM-320 supports 64-bit and 128-bit keys.

Netmask: Commonly referred to as subnet mask, this is used to determine what subnet an IP address belongs to.

RJ-45: RJ-45 is the standard connector for Ethernet cabling. It looks like a phone cable connector, but is slightly larger. RJ-45 connectors have 8 pins, 4 of which are used for transmitting and receiving data.

SSID (Service Set Identifier): The name designated for a specific wireless local area network (WLAN). The SSID can be easily changed to connect to an existing wireless network.

Static IP: A static IP address is configured manually on the device that will be using it. A static IP address remains the same constantly and must be a unique address.

WEP (Wired Equivalent Privacy): A security protocol for wireless local area networks (WLAN) that is designed to provide the same level of security as a wired network. WEP provides security by encrypting the data sent over the WLAN. The DSM-320 supports 64-bit and 128-bit encryption.

Wired: Devices networked via Ethernet cabling.

Wireless: Devices networked using radio frequencies instead of physical cabling.

Glossary (continued)

Music

AIFF is short for **A**udio **I**nterchange **F**ile **F**ormat, an audio format that was developed by Apple Computer and is the standard audio format for Macintosh computers. AIFF use a **.AIF** or **.IEF** extension.

M3U is a playlist format and is the default playlist format of WinAMP and most other media player software. It allows multiple files to be queued in a program in a specific format.

MP3 is the file extension for MPEG-1, audio layer 3. Layer 3 is one of three coding schemes (layer 1, layer 2 and layer 3) for the compression of audio signals. Layer 3 removes the redundant and irrelevant parts of a sound signal, which the human ear does not hear. It uses Modified Discrete Cosine Transform to implement a filter bank, increasing the frequency resolution 18 times higher than that of layer 2.

OGG or OGG Vorbis is an open source audio compression format. The name OGG is derived from term in a network game and Vorbis from a character in a novel. OGG is used for mid to high quality (8kHz-48.0kHz, 16+ bit, polyphonic) audio and music at fixed and variable bitrates from 16 to 128kbps/channel.

PLS is a proprietary playlist format used for playing Shoutcast and other audio streams.

WAV is the file extension for PC sound files and was developed by Microsoft and IBM. WAV sound files end with a **.wav** extension and are compatible with Windows® applications supporting audio.

WMA is short for Windows® Media Audio and is an audio format that was created by Microsoft. It is similar to MP3, although WMA can compress at a higher rate than MP3.

Glossary (continued)

Photo

BMP: The standard bit-mapped graphics format used in the Windows® environment. By convention, graphics files in the BMP format end with a .BMP extension.

GIF: Pronounced jiff or giff and stands for **graphics interchange format**, it is a bit-mapped graphics file format. GIF supports color and various resolutions. It uses data compression, but it is limited to a 256-color palette.

JPG: Short for **Joint Photographic Experts Group**, and pronounced jay-peg. JPEG is a lossy compression technique for color images. Although it can reduce files sizes to about 5% of their normal size, some detail is lost in the compression.

JP2: JP2 is the file extension for the new image format called JPEG2000 based on the latest image compression technology.

PNG: Short for **Portable Network Graphics**, is a bit-mapped graphics format similar to GIF. In fact, PNG was approved as a standard by the World Wide Web consortium to replace GIF because GIF uses a patented data compression scheme. In contrast, PNG is patent and license-free.

TIFF: Acronym for **Tagged Image File Format**, and is one of the most widely supported file formats for storing bit-mapped images on personal computers. TIFF graphics can be any resolution, and they can be black and white, gray-scaled, or color. Files in TIFF format often end with a .tif extension.

Glossary (continued)

Video

AVI: Short for **A**udio **V**ideo **I**nterleave, the file format for Microsoft's Video for Windows® standard. See under Video for Windows®.

DivX: Is a video format that is MPEG-4 compliant and widely used on the Internet for encoding video files.

MPEG: Short for **M**oving **P**icture **E**xperts **G**roup, and pronounced "empeg". MPEG generally produces better-quality video than competing formats. MPEG achieves high compression rate by storing only the changes from one frame to another, instead of each entire frame. MPEG uses a type of lossy compression, since some data is removed. However, the reduction in the resulting video quality is minimal. There are three major MPEG standards: MPEG-1, MPEG-2 and MPEG-4.

- The most common implementations of the MPEG-1 standard provide a video resolution of 352-by-240 at 30 frames per second (fps). MPEG-1 is used with Video CDs (VCD) and results in video quality slightly below the quality of a VCR video.
- MPEG-2 offers higher resolution with CD-quality audio. This is sufficient for all major TV standards, including NTSC, and even HDTV. MPEG-2 is used by DVDs. MPEG-2 compresses a 2 hour video into a few gigabytes of data on a single disc.
- MPEG-4 is a video compression standard based on MPEG-1 and MPEG-2. Videos encoded with MPEG-4 technology are considerably smaller than videos encoded with MPEG-1 or 2. MPEG-4 was standardized in October 1998.

QuickTime: An audio and video compression technology developed by Apple Computer and is widely supported on Macintosh and Windows® PC computers. The latest QuickTime implementation is MPEG-4 compliant.

SRT subtitle format: Speech Recogniser Transcript is a subtitle format that outputs text for a recorded waveform that is attached to a video file. By including an SRT file in the same folder as a supported video file, the DSM-320 can display the subtitles for the video file.

XviD: XviD is an ISO MPEG-4 compliant video codec. It's an open source project which is developed and maintained by many people from all over the world.

Contacting Technical Support

Technical Support

You can find software updates and user documentation on the D-Link website.

U.S. and Canadian customers can contact D-Link Technical Support through our website, or by phone.

Tech Support for customers within the United States:

D-Link Technical Support over the Telephone:

(877) 453-5465

D-Link Technical Support over the Internet:

<http://support.dlink.com>

Tech Support for customers within Canada:

D-Link Technical Support over the Telephone:

(800) 361-5265

D-Link Technical Support over the Internet:

<http://support.dlink.ca>

Warranty USA Only

Subject to the terms and conditions set forth herein, D-Link Systems, Inc. (“D-Link”) provides this Limited warranty for its product only to the person or entity that originally purchased the product from:

- D-Link or its authorized reseller or distributor and
- Products purchased and delivered within the fifty states of the United States, the District of Columbia, U.S. Possessions or Protectorates, U.S. Military Installations, addresses with an APO or FPO.

Limited Warranty: D-Link warrants that the hardware portion of the D-Link products described below will be free from material defects in workmanship and materials from the date of original retail purchase of the product, for the period set forth below applicable to the product type (“Warranty Period”), except as otherwise stated herein.

1-Year Limited Warranty for the Product(s) is defined as follows:

- Hardware (excluding power supplies and fans) One (1) Year
- Power Supplies and Fans One (1) Year
- Spare parts and spare kits Ninety (90) days

D-Link’s sole obligation shall be to repair or replace the defective Hardware during the Warranty Period at no charge to the original owner or to refund at D-Link’s sole discretion. Such repair or replacement will be rendered by D-Link at an Authorized D-Link Service Office. The replacement Hardware need not be new or have an identical make, model or part. D-Link may in its sole discretion replace the defective Hardware (or any part thereof) with any reconditioned product that D-Link reasonably determines is substantially equivalent (or superior) in all material respects to the defective Hardware. Repaired or replacement Hardware will be warranted for the remainder of the original Warranty Period from the date of original retail purchase. If a material defect is incapable of correction, or if D-Link determines in its sole discretion that it is not practical to repair or replace the defective Hardware, the price paid by the original purchaser for the defective Hardware will be refunded by D-Link upon return to D-Link of the defective Hardware. All Hardware (or part thereof) that is replaced by D-Link, or for which the purchase price is refunded, shall become the property of D-Link upon replacement or refund.

Limited Software Warranty: D-Link warrants that the software portion of the product (“Software”) will substantially conform to D-Link’s then current functional specifications for the Software, as set forth in the applicable documentation, from the date of original retail purchase of the Software for a period of ninety (90) days (“Warranty Period”), provided that the Software is properly installed on approved hardware and operated as contemplated in its documentation. D-Link further warrants that, during the Warranty Period, the magnetic media on which D-Link delivers the Software will be free of physical defects. D-Link’s sole obligation shall be to replace the non-conforming Software (or defective media) with software that substantially conforms to D-Link’s functional specifications for the Software or to refund at D-Link’s sole discretion. Except as otherwise agreed by D-Link in writing, the replacement Software is provided only to the original licensee, and is subject to the terms and conditions of the license granted by D-Link for the Software. Software will be warranted for the remainder of the original Warranty Period from the date of original retail purchase. If a material non-conformance is incapable of correction, or if D-Link determines in its sole discretion that it is not practical to replace the non-conforming Software, the price paid by the original licensee for the non-conforming Software will be refunded by D-Link; provided that the non-conforming Software (and all copies thereof) is first returned to D-Link. The license granted respecting any Software for which a refund is given automatically terminates.

Non-Applicability of Warranty: The Limited Warranty provided hereunder for hardware and software of D-Link’s products will not be applied to and does not cover any refurbished product and any product purchased through the inventory clearance or liquidation sale or other sales in which D-Link, the sellers, or the liquidators expressly disclaim their warranty obligation pertaining to the product and in that case, the product is being sold “As-Is” without any warranty whatsoever including, without limitation, the Limited Warranty as described herein, notwithstanding anything stated herein to the contrary.

Submitting A Claim: The customer shall return the product to the original purchase point based on its return policy. In case the return policy period has expired and the product is within warranty, the customer shall submit a claim to D-Link as outlined below:

- The customer must submit with the product as part of the claim a written description of the Hardware defect or Software nonconformance in sufficient detail to allow D-Link to confirm the same.
- The original product owner must obtain a Return Material Authorization (“RMA”) number from the Authorized D-Link Service Office and, if requested, provide written proof of purchase of the product (such as a copy of the dated purchase invoice for the product) before the warranty service is provided.

Warranty (continued)

USA only

- After an RMA number is issued, the defective product must be packaged securely in the original or other suitable shipping package to ensure that it will not be damaged in transit, and the RMA number must be prominently marked on the outside of the package. Do not include any manuals or accessories in the shipping package. D-Link will only replace the defective portion of the Product and will not ship back any accessories.
- The customer is responsible for all in-bound shipping charges to D-Link. No Cash on Delivery ("COD") is allowed. Products sent COD will either be rejected by D-Link or become the property of D-Link. Products shall be fully insured by the customer and shipped to **D-Link Systems, Inc., 17595 Mt. Herrmann, Fountain Valley, CA 92708**. D-Link will not be held responsible for any packages that are lost in transit to D-Link. The repaired or replaced packages will be shipped to the customer via UPS Ground or any common carrier selected by D-Link, with shipping charges prepaid. Expedited shipping is available if shipping charges are prepaid by the customer and upon request.

D-Link may reject or return any product that is not packaged and shipped in strict compliance with the foregoing requirements, or for which an RMA number is not visible from the outside of the package. The product owner agrees to pay D-Link's reasonable handling and return shipping charges for any product that is not packaged and shipped in accordance with the foregoing requirements, or that is determined by D-Link not to be defective or non-conforming.

What Is Not Covered: This limited warranty provided by D-Link does not cover: Products, if in D-Link's judgment, have been subjected to abuse, accident, alteration, modification, tampering, negligence, misuse, faulty installation, lack of reasonable care, repair or service in any way that is not contemplated in the documentation for the product, or if the model or serial number has been altered, tampered with, defaced or removed; Initial installation, installation and removal of the product for repair, and shipping costs; Operational adjustments covered in the operating manual for the product, and normal maintenance; Damage that occurs in shipment, due to act of God, failures due to power surge, and cosmetic damage; Any hardware, software, firmware or other products or services provided by anyone other than D-Link; Products that have been purchased from inventory clearance or liquidation sales or other sales in which D-Link, the sellers, or the liquidators expressly disclaim their warranty obligation pertaining to the product. Repair by anyone other than D-Link or an Authorized D-Link Service Office will void this Warranty.

Disclaimer of Other Warranties: EXCEPT FOR THE LIMITED WARRANTY SPECIFIED HEREIN, THE PRODUCT IS PROVIDED "AS-IS" WITHOUT ANY WARRANTY OF ANY KIND WHATSOEVER INCLUDING, WITHOUT LIMITATION, ANY WARRANTY OF MERCHANTABILITY, FITNESS FOR A PARTICULAR PURPOSE AND NON-INFRINGEMENT. IF ANY IMPLIED WARRANTY CANNOT BE DISCLAIMED IN ANY TERRITORY WHERE A PRODUCT IS SOLD, THE DURATION OF SUCH IMPLIED WARRANTY SHALL BE LIMITED TO NINETY (90) DAYS. EXCEPT AS EXPRESSLY COVERED UNDER THE LIMITED WARRANTY PROVIDED HEREIN, THE ENTIRE RISK AS TO THE QUALITY, SELECTION AND PERFORMANCE OF THE PRODUCT IS WITH THE PURCHASER OF THE PRODUCT.

Limitation of Liability: TO THE MAXIMUM EXTENT PERMITTED BY LAW, D-LINK IS NOT LIABLE UNDER ANY CONTRACT, NEGLIGENCE, STRICT LIABILITY OR OTHER LEGAL OR EQUITABLE THEORY FOR ANY LOSS OF USE OF THE PRODUCT, INCONVENIENCE OR DAMAGES OF ANY CHARACTER, WHETHER DIRECT, SPECIAL, INCIDENTAL OR CONSEQUENTIAL (INCLUDING, BUT NOT LIMITED TO, DAMAGES FOR LOSS OF GOODWILL, LOSS OF REVENUE OR PROFIT, WORK STOPPAGE, COMPUTER FAILURE OR MALFUNCTION, FAILURE OF OTHER EQUIPMENT OR COMPUTER PROGRAMS TO WHICH D-LINK'S PRODUCT IS CONNECTED WITH, LOSS OF INFORMATION OR DATA CONTAINED IN, STORED ON, OR INTEGRATED WITH ANY PRODUCT RETURNED TO D-LINK FOR WARRANTY SERVICE) RESULTING FROM THE USE OF THE PRODUCT, RELATING TO WARRANTY SERVICE, OR ARISING OUT OF ANY BREACH OF THIS LIMITED WARRANTY, EVEN IF D-LINK HAS BEEN ADVISED OF THE POSSIBILITY OF SUCH DAMAGES. THE SOLE REMEDY FOR A BREACH OF THE FOREGOING LIMITED WARRANTY IS REPAIR, REPLACEMENT OR REFUND OF THE DEFECTIVE OR NON-CONFORMING PRODUCT. THE MAXIMUM LIABILITY OF D-LINK UNDER THIS WARRANTY IS LIMITED TO THE PURCHASE PRICE OF THE PRODUCT COVERED BY THE WARRANTY. THE FOREGOING EXPRESS WRITTEN WARRANTIES AND REMEDIES ARE EXCLUSIVE AND ARE IN LIEU OF ANY OTHER WARRANTIES OR REMEDIES, EXPRESS, IMPLIED OR STATUTORY.

Governing Law: This Limited Warranty shall be governed by the laws of the State of California. Some states do not allow exclusion or limitation of incidental or consequential damages, or limitations on how long an implied warranty lasts, so the foregoing limitations and exclusions may not apply. This limited warranty provides specific legal rights and the product owner may also have other rights which vary from state to state.

Warranty (continued)

USA only

Trademarks: D-Link is a registered trademark of D-Link Systems, Inc. Other trademarks or registered trademarks are the property of their respective manufacturers or owners.

Copyright Statement: No part of this publication or documentation accompanying this Product may be reproduced in any form or by any means or used to make any derivative such as translation, transformation, or adaptation without permission from D-Link Corporation/D-Link Systems, Inc., as stipulated by the United States Copyright Act of 1976. Contents are subject to change without prior notice. Copyright© 2002-2006 by D-Link Corporation/D-Link Systems, Inc. All rights reserved.

FCC Statement: This equipment has been tested and found to comply with the limits for a Class B digital device, pursuant to part 15 of the FCC Rules. These limits are designed to provide reasonable protection against harmful interference in a residential installation. This equipment generates, uses, and can radiate radio frequency energy and, if not installed and used in accordance with the instructions, may cause harmful interference to radio communication. However, there is no guarantee that interference will not occur in a particular installation. If this equipment does cause harmful interference to radio or television reception, which can be determined by turning the equipment off and on, the user is encouraged to try to correct the interference by one or more of the following measures:

- Reorient or relocate the receiving antenna.
- Increase the separation between the equipment and receiver.
- Connect the equipment into an outlet on a circuit different from that to which the receiver is connected.
- Consult the dealer or an experienced radio/TV technician for help.

The manufacturer is not responsible for any radio or TV interference caused by unauthorized modifications to this equipment; such modifications could void the user's authority to operate the equipment.

FCC Caution:

This device complies with Part 15 of the FCC Rules. Operation is subject to the following two conditions: (1) This device may not cause harmful interference, and (2) this device must accept any interference received, including interference that may cause undesired operation.

IMPORTANT NOTE:

FCC Radiation Exposure Statement:

This equipment complies with FCC radiation exposure limits set forth for an uncontrolled environment. The antenna(s) used for this equipment must be installed to provide a separation distance of at least eight inches (20 cm) from all persons. This equipment must not be operated in conjunction with any other antenna.

For detailed warranty outside the United States, please contact corresponding local D-Link office.

Registration

**Register your product online at:
<http://support.dlink.com/register>**



Product registration is entirely voluntary and failure to complete or return this form will not diminish your warranty rights.

Version 1.7
November 22, 2006