



Patent Pending

# Install Guide

Version 1.1

DSM-520

## Wireless HD Media Player

# System Requirements

Minimum System Requirements:

- Windows® XP/2000
- CPU 500MHz plus processor
- Memory Size: 128MB or above
- 50MB of available hard drive space and a wireless or Ethernet network.

## Package Contents



**DSM-520**  
**Wireless HD Media Player**



**Remote Control**



**Antenna**



**CAT5 Ethernet Cable**



**Standard Composite RCA**  
**Audio/Video Cable**



**S-Video Cable**

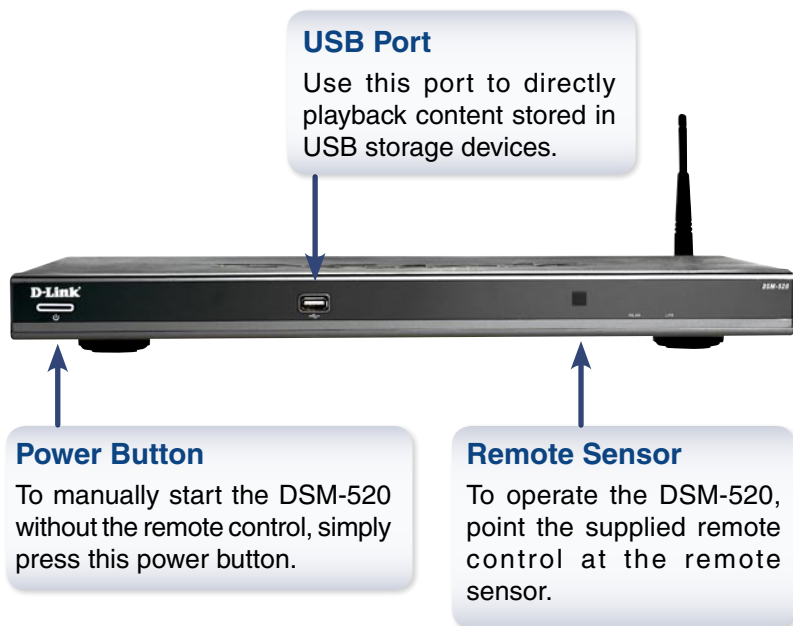


**Installation CD**  
**(Contains D-Link® Media Server Software,**  
**Quick Installation Guide, and Manual)**

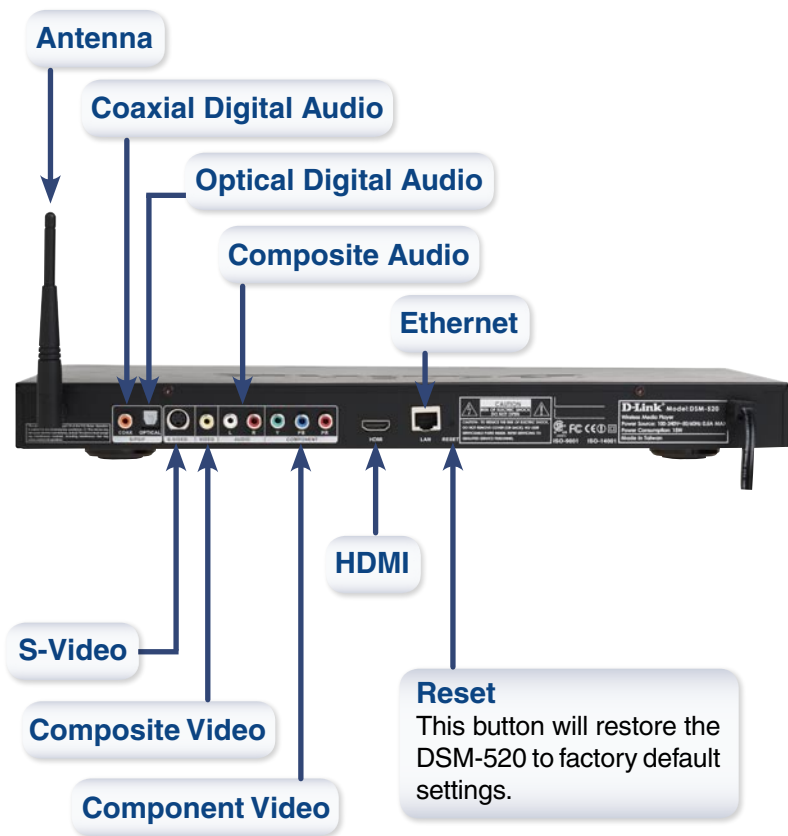
*If any of the above items are missing, please contact your reseller.*

# Hardware Overview

## Front Panel



## Back Panel Connections



# Installing the D-Link® Media Server Software

Install the D-Link® Media Server Software on each PC that contains music, video, or photo files you wish to use with the DSM-520.

Follow the steps in this section to install the software.

Insert the DSM-520 CD-ROM into the CD-ROM drive and the following screen will appear.

Click on **Install D-Link® Media Server**

If the screen on the right does not appear, go to **My Computer** and double-click on the **CD-ROM** drive. The screen at the right will appear.

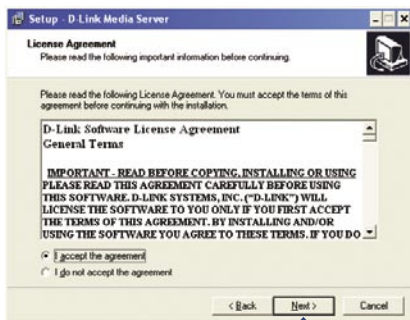


The D-Link® Media Server Setup Wizard will appear.

Click **Next**



The D-Link license agreement screen appears.



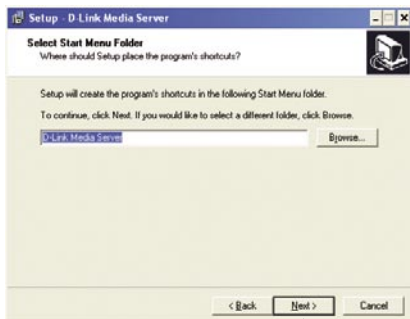
Click **Next**

Choose a destination location or accept the default location. This is where the D-Link Media Server software will be copied to on your system.



Click **Next**

Choose a start menu folder or accept the default location.



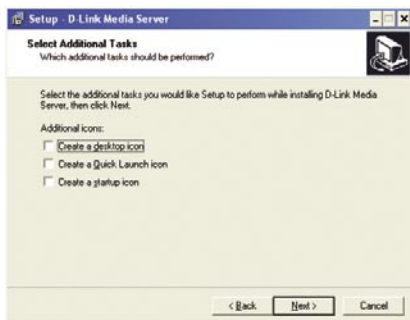
Click **Next**

Select the icons you want created.

Select **Create a desktop icon** to access the program from your desktop.

Select **Create a Quick Launch icon** to access the program from your taskbar.

Select **Create a startup icon** so the program launches on startup.



The necessary software will be copied to the specified locations on your computer.



Click **Install**

Check **Launch D-Link® Media Server**

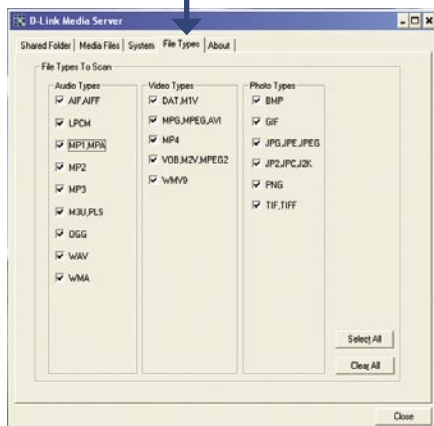


Click **Finish**

# Configuring the D-Link® Media Server Software

If you checked the **Launch D-Link® Media Server** check box, the following screens will be displayed.

The **File Types** tab is where you select the types of audio, video, and photo files that you want to share.



The **Shared Folders** tab is where you select the folders that contain your audio, video, and photo files.

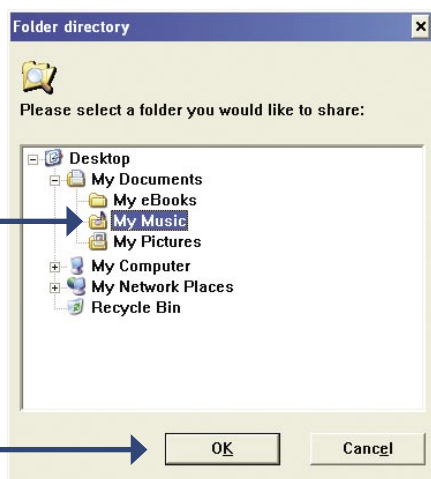


Click **Add a Folder**

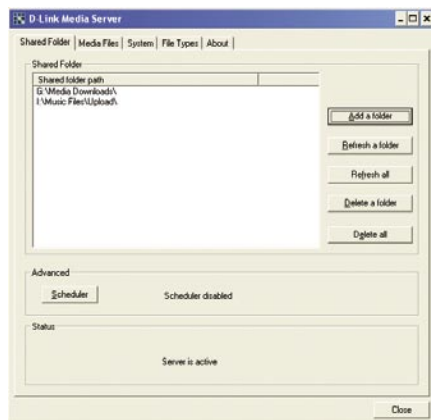


**Select** the folder containing the files you wish to share.

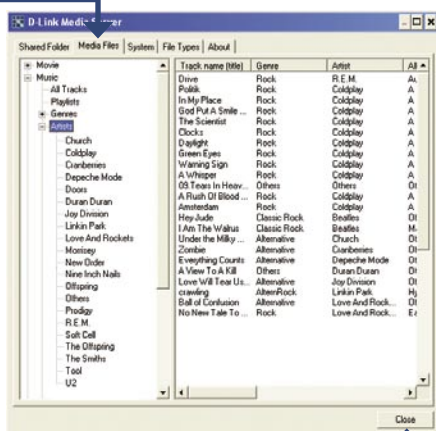
Click **OK**



Repeat the steps until all of the folders containing audio, video, and photos you want to share have been added.



The **Media Files** tab will show all your audio, video, and photo files as well.



Click **Close**

## Connecting the DSM-520

All audio, video, and networking connections are located on the rear panel of the DSM-520.

### Video Connections

Select one of four ways to connect video to your DSM-520:

- **Composite Video Connector**

Plug the supplied yellow video cable into the VIDEO connector on the DSM-520 and the matching opposite end of the cable to your television input.



- **S-Video Connector**

Plug the supplied S-Video cable into the S-VIDEO connector on the DSM-520 and the opposite end into the S-Video connector on your television.



- **Component Video Connectors**

Match the color coded cables to the matching COMPONENT connectors on the DSM-520 and the opposite end into the component video input of your television.



**Note:** This cable is not supplied.

The **VIDEO OUT** button on the remote control toggles between the composite/S-Video output and the component video output. If component connectors are used but not selected, the screen will be tinted blue.

- **HDMI**

Plug the HDMI cable into the HDMI connector on the back panel of the DSM-520.

Plug the opposite end to the matching HDMI connector on your television or audio/video system.

**Note:** *This cable is not supplied.*



High-Definition Multimedia Interface (HDMI) supports standard, enhanced, or high-definition video, plus multi-channel digital audio on a single cable.

## Audio Connections

The **AUDIO OUT** button on the remote control toggles between the composite audio output and the digital audio output (optical/coaxial).

Select one of three ways to connect audio to your DSM-520:

- **Composite Audio**

Plug the supplied red and white connectors into the AUDIO (color-coded matching) jacks on the DSM-520.

Plug the opposite ends to the matching jacks on your television or audio/video system.



- **Optical Digital Audio**

Connect an optical audio connector into the OPTICAL connector on the DSM-520 and the matching opposite end of the cable to the audio input of your audio system.

**Note:** This cable is not supplied.



- **Coaxial Digital Audio**

Connect a coaxial digital audio connector into the COAX connector on the DSM-520 and the matching opposite end of the cable to the audio input of your audio system.

**Note:** This cable is not supplied.



## Network Connections

Select one of two ways to connect your DSM-520 to your network:

- **RJ-45 Ethernet Connector**

Connect the supplied Ethernet cable to the network cable connector, and attach the other end to a router or hub on your network.



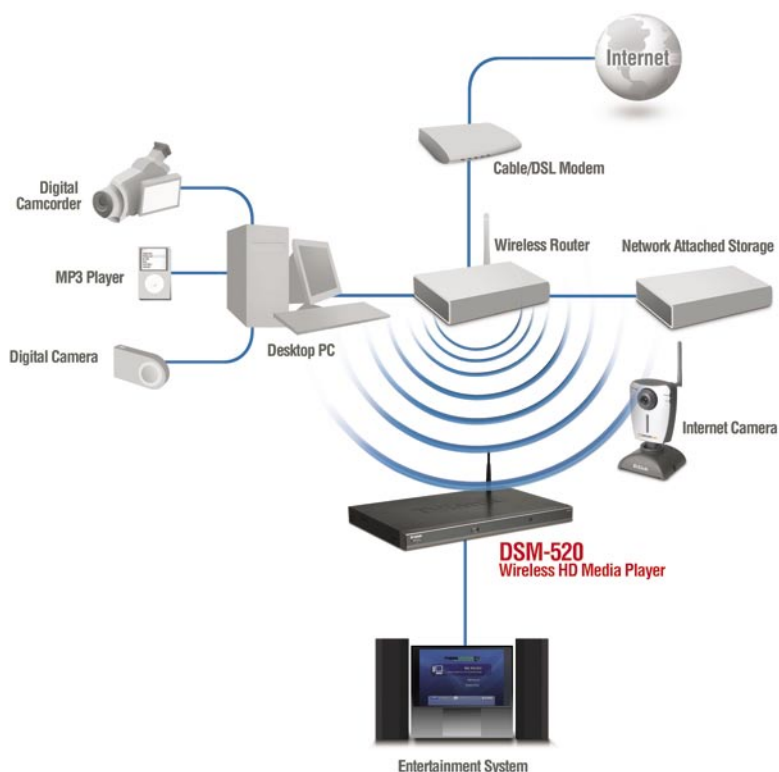
- **Wireless Antenna**

Attach the supplied antenna by threading it onto the antenna connector. Be sure the antenna is secure and in an upright position.



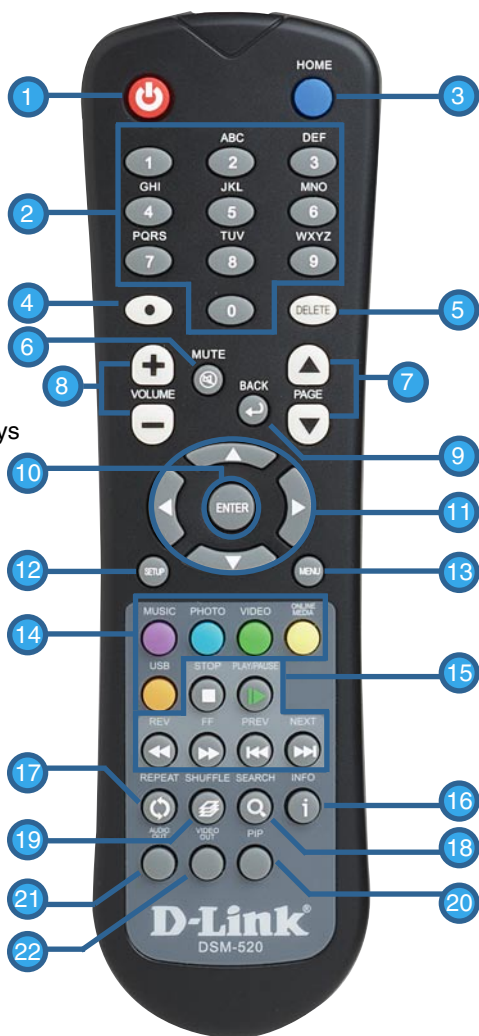
**Note:** You may have an Ethernet cable plugged into the unit and have the wireless antenna connected. Neither will interfere with the other, but only one network can be accessed at a time (wired or wireless). The network connection type is selected in the Setup Wizard and can also be changed by going to the Setup Menu. To access the Setup Menu, press the **SETUP** button on the remote control.

Below is a diagram displaying what your network might look like once all of the connections have been made to the MediaLounge™ DSM-520 Wireless HD Media Player.



# Using the Remote Control

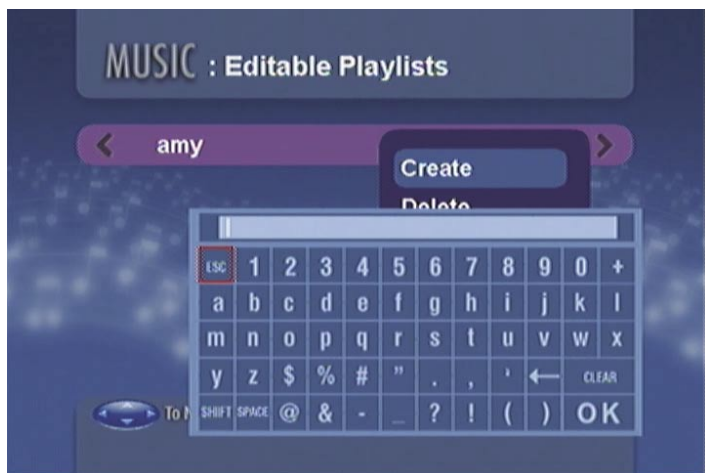
1. Power
2. Alphanumeric Keys
3. HOME
4. "." (period or dot)
5. DELETE
6. MUTE
7. PAGE UP & DOWN
8. VOLUME + & -
9. BACK
10. ENTER
11. Navigation Buttons
12. SETUP
13. MENU
14. Color-Coded Shortcut Keys
15. Stop, Play/Pause, REV, FF, PREV, and NEXT
16. INFO
17. REPEAT
18. SEARCH
19. SHUFFLE
20. PIP (Picture In Picture)
21. AUDIO OUT
22. VIDEO OUT





## Using the On-Screen keyboard

Whenever you need to enter text, press **ENTER** on the remote and the on-screen keyboard will appear.



The keyboard is used for a variety of functions such as naming your DSM-520 and performing searches for music, photos or video. To use the keyboard, highlight a character with the arrow buttons on the remote control and press the **ENTER** button. Text can also be entered by using numbers 2-9 on the remote, just as you would on a cell phone. Highlight OK and press **ENTER** when you're finished entering text.

## DSM-520 Setup Wizard

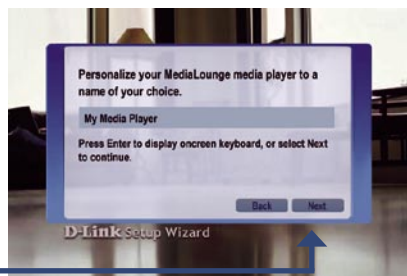
Upon initial startup, the DSM-520 displays the Setup Wizard. The Setup Wizard will guide you through the necessary steps for configuring the DSM-520. You can also use Windows® Connect Now (WCN) to simplify the wireless setup, skip to page 22.



Click **Next** to begin the DSM-520 Setup Wizard

Type in a name of your choice or select the default setting.

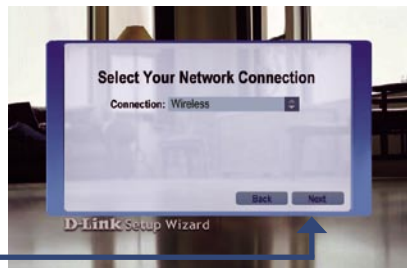
Click **Next** to continue



**Select your network connection type.**

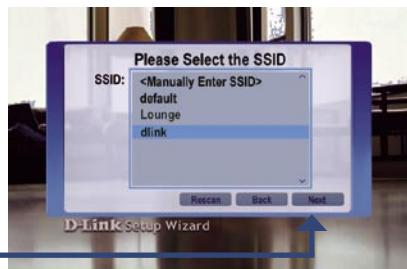
If selecting **Wired**, skip to **Your Current Network Settings** on page 20

Click **Next** to continue



If you are using a wireless network connection, **please select the SSID** of the network.

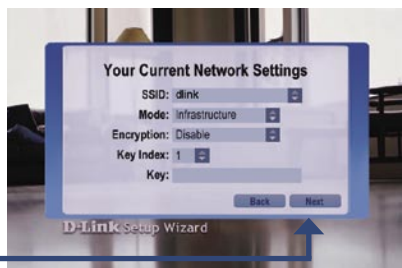
Click **Next** to continue



**Your current network settings** are displayed and can be changed at this point.

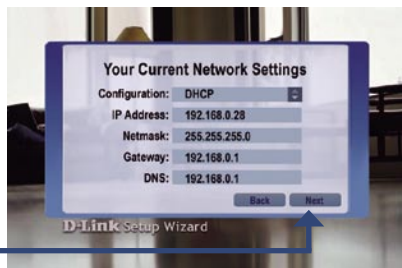
*Keys can be entered in hex or ASCII format. See the User Manual located on the CD-ROM for details.*

Click **Next** to continue



**Your current network settings** are displayed and can be changed at this point.

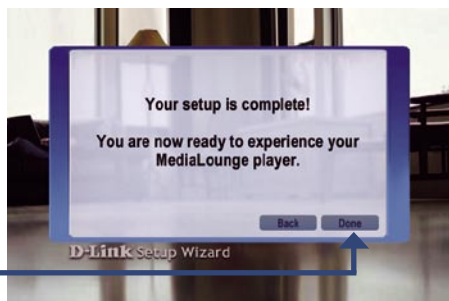
Click **Next** to continue



**Please select a Media Server** from the list.

Click **Next** to continue





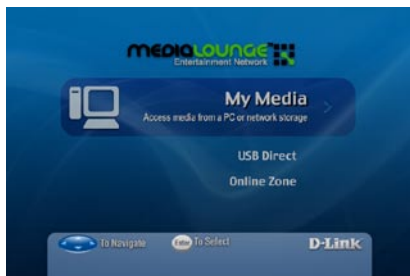
Click **Done** to finish

## Your Setup is Complete

For detailed usage instructions and information on supported file types, please refer to the User Manual that is located on the MediaLounge™ CD-ROM.

Your MediaLounge™ DSM-520 is now ready to stream music, photo, and video content for enjoyment on your home entertainment center.

From this home screen, you can access MY MEDIA, USB DIRECT, or ONLINE ZONE. To jump directly to the home screen, press the HOME button on the remote control.

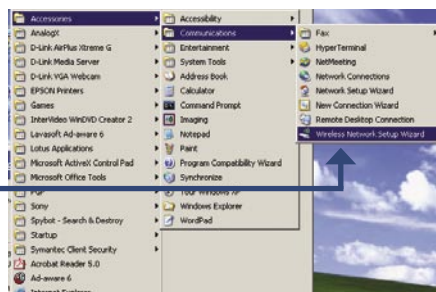


# Configure Wireless Settings with Windows® Connect Now (WCN)

If you already have wireless settings configured on your PC, instead of using the setup wizard, you can use Windows® Connect Now (WCN) to configure the wireless settings on your DSM-520.

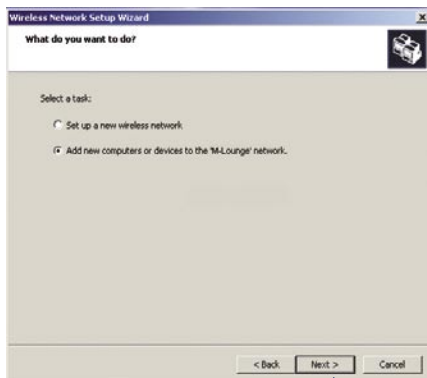
**Note:** WCN is only available on PCs running Windows® XP with Service Pack 2 installed.

Go to Start > All Programs > Accessories > Communications and click **Wireless Network Setup Wizard**.



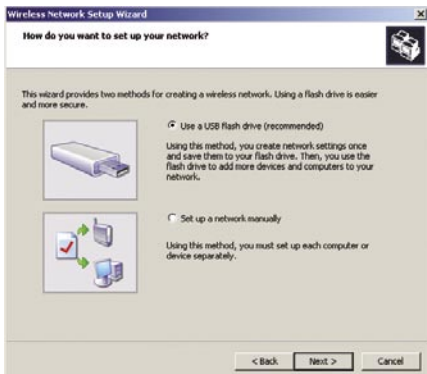
Click **Next** to continue

Select the option to add new computers or devices to your existing wireless network.



Click **Next** to continue

Select the option **Use a USB flash drive**, to save your wireless network settings.



Click **Next** to continue

Plug your flash drive into a USB port on this computer.



Click **Next** to continue

This screen will appear when the wireless settings have been saved to the USB flash drive.

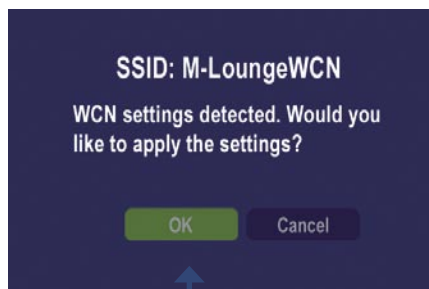




Next, remove the USB Flash Drive from your PC and insert it into the USB port on the DSM-520, which is located on the front panel.

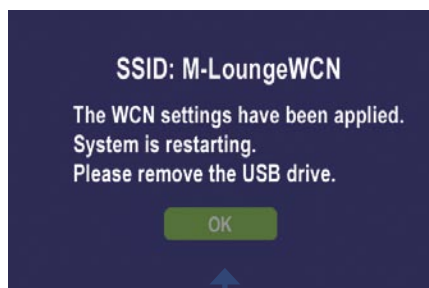


The following screens will appear on the DSM-520.



Click **Next** to continue

The following screen confirms that your wireless settings have been applied.



Click **OK**

Next, remove the USB Flash Drive from the DSM-520 and insert it back into the USB port on your PC.



Click **Next** to continue



Click **Finish**

## You have Completed Configuring your Wireless Settings using WCN!

# Notes

# Technical Support

D-Link's website contains the latest user documentation and software updates for D-Link products.

D-Link provides free technical support for customers within the United States and Canada for the duration of the product's warranty period.

U.S. and Canadian customers can contact D-Link Technical Support through our website or by phone.

## United States

### Telephone

(877) 453-5465

Twenty four hours a day, seven days a week.

### World Wide Web

<http://support.dlink.com>

### E-mail

[support@dlink.com](mailto:support@dlink.com)

## Canada

### Telephone

(800) 361-5265

Monday through Friday, 7:30am to 12:00am EST.

### World Wide Web

<http://support.dlink.ca>

### E-mail

[support@dlink.ca](mailto:support@dlink.ca)



Version 1.1

©2005 D-Link Corporation/D-Link Systems, Inc. All rights reserved. D-Link and the D-Link logo are trademarks or registered trademarks of D-Link Corporation or its subsidiaries in the United States and other countries.

Other trademarks are the property of their respective owners. All references to speed are for comparison purposes only. Product specifications, size, and shape are subject to change without notice, and actual product appearance may differ from that depicted herein. Visit [www.dlink.com](http://www.dlink.com) for more details.

DSM-520 09292005