

Quick Install Guide

Wireless N900 Dual Band USB Adapter



Thank you for purchasing the DWA-162. Follow the easy steps in this guide to properly set up your adapter. Please verify that all the package contents listed below are available.

Package Contents



DWA-162 Wireless N900 Dual Band USB Adapter



Micro USB Cable



CD with drivers and manual



Quick Install Guide

If any of the above items are missing, please contact your reseller.

System Requirements

- An available USB 2.0 slot
- Windows® 8, 7, Vista® or XP (32/64-bit)
- An 802.11n, 802.11g or 802.11a wireless network
- 20MB free hard drive space
- CD-ROM Drive (must support 80mm Mini CD)

DWA-162

1 Before You Begin

Before installing your new D-Link wireless adapter, please verify the following:

- Remove any previous installations of wireless adapters.
- Disable any built-in wireless and/or Ethernet adapters.
- Verify the settings such as the wireless network name (SSID) and security settings of the network(s) you want to connect to.

Note: If your computer does not support the 80mm autorun CD, please go to www.dlink.com/DWA-162 to download the driver before you start using your wireless adapter.

2 Installation

WARNING: Do NOT plug the adapter into your computer before installing the drivers. You will be prompted to plug in your adapter during the setup.

Step 1: Insert the DWA-162 Driver CD into the CD-ROM drive. When the autorun screen appears, click **Install** and follow the on-screen instructions.



Note: If the CD Autorun function does not automatically start on your computer, go to **Start > Run**. In the run box type “D:\autorun.exe” (where D: represents the drive letter of your CD-ROM drive) and click **OK**.

Step 2: Select the language you want the setup wizard to display. Click **Next** to continue.

Step 3: The Welcome screen will appear. Click **Next** to continue.

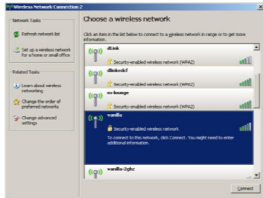
Step 4: You will now be asked to plug the DWA-162 adapter into an available USB port. Once you plug it in, click **Install** to continue.

Step 5: The drivers will now be installed. This process may take a minute to complete.

Step 6: Once the **InstallShield Wizard Complete** screen appears, the DWA-162 has been successfully installed. Click **Finish** to exit the Install Wizard.

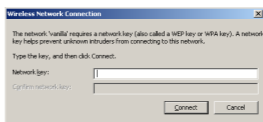
3 Wireless Network Connection

Step 1: Click the **Wireless Networks** icon in the bottom-right of the screen to bring up the list of available networks.



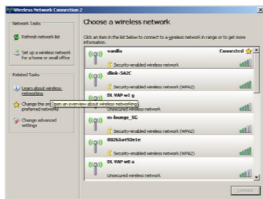
Step 2: Select the wireless network you would like to connect to from the list and click the **Connect** button. It may take a minute while the connection is established.

Step 3: If the wireless network you are connecting to has security (encryption) enabled, enter the security password and click **Next** to continue.



Note: The password is case-sensitive and must be typed in exactly the same as on your wireless router or access point.

Step 4: You are now connected to your wireless network.



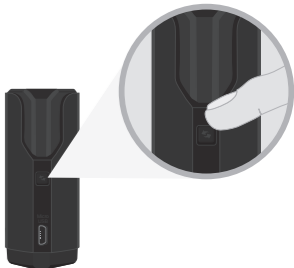
WPS Setup

You can also connect to your wireless network using the **WPS button setup** method.

Step A: Press the **WPS** button (or launch the WPS process) on your wireless router or access point. Please consult your router or access point’s user manual on how to start the WPS process.



Step B: Within two minutes, click the **WPS** button on your DWA-162 adapter.



Step C: After two minutes your adapter will be securely connected to your wireless network.

Technical Support

Having trouble installing your new product? D-Link’s website contains the latest user documentation and software updates for D-Link products. U.S. and Canadian customers can contact D-Link Technical Support through our website or by phone.

United States

Telephone: (877) 453-5465

Internet: <http://support.dlink.com>

Canada

Telephone: (800) 361-5265

Internet: <http://support.dlink.ca>

©2012 D-Link Corporation/D-Link Systems, Inc. All rights reserved. D-Link and the D-Link logo are registered trademarks of D-Link Corporation or its subsidiaries in the United States and/or other countries. Other trademarks or registered trademarks are the property of their respective owners. Maximum wireless signal rate derived from IEEE Standards 802.11ac (draft), 802.11n, 802.11a, and 802.11n specifications. Actual data throughput will vary. Network conditions and environmental factors, including volume of network traffic, building materials and construction, and network overhead, lower actual data throughput rate. Environmental conditions will adversely affect wireless signal range. Product specifications, size and shape are subject to change without notice, and actual product appearance may differ from that depicted on the package. Visit dlink.com (US) or dlink.ca (Canada) for more details.